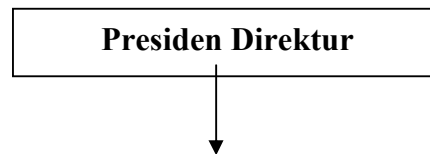


Lampiran 1

STRUKTUR ORGANISASI PT. APOLLO AGUNG CHEMICALS INDUSTRY



*Lampiran 3***KUESIONER I**
PROFIL PERUSAHAAN

1. Nama :
2. Jenis kelamin :
3. Umur :
4. Pekerjaan :
5. Pendidikan :
 - a. SLTA
 - b. Diploma
 - c. Sarjana/S1
 - d. Master/S2
 - e. Doctor/S3
6. Jabatan :
7. Lama bekerja :

Lampiran 4

Dibawah ini adalah pertanyaan mengenai peranan sistem informasi akuntansi penjualan tunai dalam menunjang aktivitas penjualan perusahaan PT. Apollo Agung Chemical Industry. Bapak/Ibu diminta untuk memberikan anggapan atas pertanyaan berikut ini, dengan memberikan tanda (√) pada jawaban yang dianggap paling tepat. Keterangan:

SS = Sangat setuju

S = Setuju

KR = Kurang Setuju

TS = Tidak Setuju

STS = Sangat Tidak Setuju

KUESIONER II**UNTUK VARIABEL INDEPENDEN****“SISTEM INFORMASI AKUNTANSI PENJUALAN TUNAI”**

No.	Pertanyaan	SS	S	KR	TS	STS
1.	Karyawan mempunyai pendidikan dan keahlian yang memadai					
2.	Karyawan diberi training atau pelatihan secara memadai sesuai dengan tugas dan tanggung jawab					
3.	Ada sanksi atas penyelewengan yang dilakukan karyawan					
4.	Penyusunan struktur organisasi yang memadai disertai pemisahan tanggung jawab yang jelas					

5.	Adanya pemisahan fungsi antara fungsi pencatatan dan penyimpanan atau pengolahan					
6.	Adanya penyiapan informasi yang memadai					
7.	Penyediaan alat informasi yang memadai seperti hardware dan software					
8.	Adanya penyusunan program computer tentang arus informasi dan langkah-langkah untuk memecahkan masalah					
9.	Faktur penjualan yang digunakan diberi nomer urut					
10.	Faktur penjualan yang digunakan rangkap dan berbeda warna					
11.	Faktur penjualan yang digunakan dibuat singkat, jelas dan informatif					
12.	Faktur penjualan dibuat sistematis					
13.	Pencatatan transaksi dilakukan oleh fungsi akuntansi					
14.	Penerimaan pesanan sesuai dengan kebutuhan pembeli					
15.	Adanya tanda bukti pembayaran pada faktur penjualan					
16.	Pengeluaran barang dicatat dan diperiksa secara berkala					
17.	Setiap barang yang keluar dari gudang diperiksa kesesuaiannya dengan faktur penjualan					
18.	Setiap transaksi dicatat dan dilaporkan secara benar					
19.	Pengumpulan data yang tepat waktu					

Lampiran 5

KUESIONER III
UNTUK VARIABEL DEPENDEN
“AKTIVITAS PENJUALAN PERUSAHAAN”

No.	Pertanyaan	SS	S	KR	TS	STS
1.	Penjualan berjalan lancar dan lancar					
2.	Pembayaran tepat waktu					
3.	Pengiriman barang langsung diserahkan kepada pembeli					
4.	Pengiriman barang dilakukan dengan tepat waktu					
5.	Tidak ada antrian yang panjang dikasir					
6.	Aktivitas penjualan merupakan sumber pendapatan					
7.	Piutang dapat ditagih tepat waktu					
8.	Pembayaran dilakukan dengan cara transfer ke bank melalui giro atau cek					

Lampiran 6

JAWABAN RESPONDEN UNTUK VARIABEL X

Resp	Item										
	1	2	3	4	5	6	7	8	9	10	11
1	5,856	5,675	5,171	5,632	5,864	5,136	3,864	5,553	5,659	5,622	4,260
2	5,856	5,675	3,651	5,632	5,864	3,847	3,864	5,553	5,659	5,622	5,726
3	5,856	5,675	5,171	5,632	5,864	5,136	3,864	5,553	4,184	4,000	5,726
4	5,856	5,675	3,651	4,000	5,864	5,136	3,864	4,141	5,659	5,622	5,726
5	5,856	5,675	2,000	5,632	3,000	2,000	1,000	4,141	4,184	4,000	4,260
6	5,856	5,675	5,171	5,632	4,401	3,847	3,864	5,553	5,659	5,622	5,726
7	5,856	5,675	3,651	4,000	4,401	2,924	3,864	4,141	5,659	5,622	5,726
8	5,856	5,675	3,651	5,632	5,864	2,924	3,864	3,000	5,659	4,000	5,726
9	5,856	5,675	3,651	5,632	4,401	5,136	3,864	3,000	5,659	4,000	4,260
10	5,856	4,000	3,651	4,000	4,401	3,847	2,577	4,141	4,184	5,622	5,726
11	5,856	5,675	5,171	5,632	5,864	5,136	2,577	5,553	4,184	5,622	4,260
12	4,000	5,675	5,171	5,632	5,864	5,136	2,020	5,553	5,659	5,622	4,260
13	5,856	4,000	5,171	4,000	4,401	3,847	2,577	5,553	5,659	5,622	5,726
14	5,856	5,675	3,651	4,000	4,401	3,847	2,020	4,141	5,659	5,622	3,000
15	5,856	5,675	5,171	5,632	4,401	5,136	3,864	4,141	4,184	4,000	5,726
16	5,856	5,675	5,171	5,632	5,864	5,136	3,864	5,553	5,659	4,000	4,260
17	5,856	5,675	5,171	5,632	5,864	5,136	3,864	5,553	4,184	5,622	4,260
18	5,856	5,675	5,171	5,632	5,864	5,136	3,864	5,553	5,659	4,000	5,726
19	5,856	5,675	3,651	5,632	4,401	3,847	2,020	5,553	4,184	5,622	4,260
20	4,000	4,000	5,171	4,000	4,401	3,847	2,577	4,141	4,184	4,000	3,000
21	5,856	5,675	3,651	5,632	5,864	2,924	2,577	5,553	5,659	5,622	5,726
22	5,856	5,675	5,171	5,632	5,864	5,136	3,864	4,141	5,659	5,622	4,260
23	5,856	5,675	3,651	4,000	4,401	5,136	3,864	4,141	3,000	4,000	5,726
24	5,856	5,675	3,651	5,632	5,864	2,924	3,864	5,553	5,659	4,000	5,726
25	5,856	5,675	3,651	5,632	4,401	3,847	3,864	5,553	5,659	5,622	5,726
26	4,000	4,000	5,171	4,000	4,401	3,847	3,864	5,553	5,659	4,000	4,260
27	5,856	5,675	5,171	5,632	5,864	5,136	3,864	5,553	5,659	5,622	5,726
28	5,856	5,675	5,171	4,000	5,864	5,136	2,577	4,141	4,184	5,622	5,726
29	5,856	5,675	3,651	5,632	5,864	5,136	3,864	4,141	5,659	5,622	5,726
30	5,856	5,675	5,171	5,632	5,864	3,847	1,543	5,553	5,659	5,622	5,726
31	5,856	4,000	3,651	4,000	5,864	5,136	3,864	5,553	3,000	4,000	5,726
32	5,856	4,000	5,171	5,632	5,864	3,847	2,020	5,553	5,659	5,622	5,726
33	4,000	4,000	5,171	4,000	4,401	5,136	3,864	4,141	5,659	5,622	4,260
34	4,000	4,000	3,651	4,000	4,401	3,847	3,864	5,553	5,659	5,622	5,726
35	4,000	4,000	3,651	4,000	4,401	3,847	3,864	5,553	5,659	5,622	5,726
36	5,856	4,000	3,651	4,000	5,864	5,136	3,864	5,553	5,659	5,622	4,260
37	5,856	5,675	5,171	4,000	5,864	5,136	3,864	4,141	5,659	4,000	4,260
38	5,856	5,675	5,171	5,632	4,401	3,847	3,864	5,553	5,659	5,622	5,726
39	5,856	4,000	5,171	5,632	5,864	5,136	2,577	3,000	4,184	5,622	5,726

LAMPIRAN

40	5,856	5,675	5,171	5,632	3,000	5,136	3,864	5,553	5,659	4,000	4,260
41	5,856	5,675	3,651	5,632	4,401	3,847	3,864	5,553	4,184	4,000	4,260
42	5,856	5,675	3,651	5,632	4,401	2,924	3,864	5,553	5,659	5,622	5,726
43	5,856	5,675	3,651	5,632	4,401	5,136	3,864	5,553	4,184	5,622	5,726
44	5,856	4,000	3,651	5,632	5,864	5,136	3,864	4,141	4,184	4,000	5,726

JAWABAN RESPONDEN UNTUK VARIABEL X

Resp.	Item								Total
	12	13	14	15	16	17	18	19	
1	4,797	5,592	5,559	4,260	3,970	4,829	2,688	3,581	93,570
2	4,797	4,103	4,061	5,726	5,284	4,829	4,100	5,100	94,950
3	4,797	5,592	4,061	4,260	5,284	4,829	4,100	3,581	93,166
4	4,797	5,592	5,559	5,726	3,970	3,504	4,100	5,100	93,542
5	4,797	4,103	4,061	5,726	2,000	3,504	1,666	2,000	69,606
6	4,797	5,592	4,061	5,726	5,284	4,829	4,100	3,581	94,977
7	4,797	5,592	5,559	5,726	3,970	4,829	4,100	3,581	89,673
8	4,797	5,592	5,559	4,260	5,284	4,829	4,100	3,581	89,854
9	4,797	5,592	5,559	4,260	5,284	4,829	4,100	5,100	90,656
10	4,797	5,592	5,559	5,726	5,284	3,504	4,100	5,100	87,668
11	4,797	3,000	5,559	4,260	3,970	3,504	2,688	3,581	86,892
12	4,797	5,592	5,559	5,726	3,970	2,681	2,688	5,100	90,707
13	4,797	5,592	5,559	4,260	2,924	4,829	4,100	5,100	89,576
14	3,213	5,592	4,061	3,000	3,970	4,829	4,100	5,100	81,736
15	4,797	5,592	3,000	4,260	3,970	3,504	2,688	3,581	85,179
16	4,797	5,592	5,559	5,726	3,970	3,504	2,688	5,100	93,608
17	3,213	5,592	4,061	5,726	5,284	4,829	4,100	3,581	93,204
18	4,797	5,592	5,559	5,726	3,970	4,829	4,100	5,100	97,810
19	4,797	5,592	5,559	5,726	5,284	4,829	4,100	5,100	91,690
20	3,213	4,103	4,061	4,260	2,924	2,000	1,000	5,100	69,983
21	4,797	5,592	5,559	3,000	5,284	4,829	4,100	5,100	93,003
22	4,797	5,592	5,559	5,726	3,970	4,829	2,688	3,581	93,623
23	4,797	5,592	5,559	4,260	5,284	4,829	4,100	5,100	88,971
24	4,797	5,592	4,061	4,260	5,284	4,829	4,100	5,100	92,428
25	3,213	4,103	5,559	5,726	5,284	3,504	2,688	3,581	89,144
26	4,797	4,103	5,559	5,726	3,970	2,681	2,688	5,100	83,380
27	4,797	5,592	5,559	5,726	2,924	2,681	2,688	3,581	93,308
28	4,797	5,592	5,559	5,726	3,970	3,504	4,100	5,100	92,302
29	4,797	4,103	5,559	5,726	5,284	4,829	2,688	5,100	94,913
30	4,797	4,103	5,559	5,726	5,284	4,829	4,100	3,581	94,128
31	4,797	4,103	5,559	5,726	2,924	2,000	1,666	3,581	81,006
32	4,797	5,592	5,559	5,726	3,970	4,829	2,688	3,581	91,693
33	3,213	5,592	5,559	5,726	3,970	3,504	4,100	5,100	87,018
34	4,797	5,592	5,559	5,726	5,284	3,504	2,688	5,100	88,573
35	3,213	5,592	5,559	5,726	5,284	4,829	4,100	3,581	88,206
36	4,797	5,592	4,061	4,260	3,970	3,504	2,688	3,581	85,918
37	3,213	5,592	5,559	5,726	2,924	3,504	2,688	5,100	87,933
38	2,000	4,103	5,559	5,726	5,284	4,829	2,688	5,100	92,297

LAMPIRAN

39	3,213	5,592	3,000	4,260	3,970	3,504	4,100	3,581	83,989
40	3,213	5,592	5,559	4,260	3,970	3,504	4,100	5,100	89,105
41	4,797	3,000	5,559	4,260	3,970	4,829	2,688	3,581	83,608
42	4,797	4,103	5,559	5,726	5,284	4,829	4,100	5,100	94,063
43	3,213	4,103	4,061	4,260	3,970	3,504	2,688	3,581	84,680
44	4,797	5,592	5,559	5,726	5,284	4,829	4,100	5,100	93,041

JAWABAN RESPONDEN UNTUK VARIABEL Y

Resp	Item								Total
	1	2	3	4	5	6	7	8	
1	5,632	5,622	6,136	6,246	5,542	4,016	2,676	5,897	41,767
2	5,632	4,000	6,136	6,246	4,185	4,016	3,997	5,897	40,108
3	5,632	5,622	4,616	6,246	4,185	5,449	2,676	4,349	38,776
4	4,000	5,622	4,616	6,246	2,992	4,016	2,676	5,897	36,064
5	5,632	5,622	4,616	4,719	2,992	2,000	1,000	4,349	30,929
6	5,632	5,622	4,616	4,719	4,185	4,016	2,676	5,897	37,363
7	5,632	5,622	6,136	4,719	4,185	4,016	3,997	5,897	40,204
8	5,632	4,000	6,136	4,719	4,185	4,016	2,676	5,897	37,261
9	4,000	5,622	6,136	4,719	4,185	5,449	3,997	4,349	38,457
10	4,000	4,000	4,616	4,719	5,542	5,449	2,676	4,349	35,351
11	4,000	5,622	4,616	6,246	4,185	4,016	2,104	4,349	35,138
12	5,632	5,622	6,136	4,719	4,185	4,016	2,676	5,897	38,883
13	4,000	4,000	4,616	4,719	2,000	4,016	3,997	5,897	33,245
14	5,632	5,622	4,616	4,719	4,185	4,016	3,997	4,349	37,136
15	4,000	4,000	4,616	4,719	4,185	4,016	3,997	3,000	32,533
16	5,632	5,622	4,616	6,246	5,542	5,449	3,997	4,349	41,454
17	4,000	5,622	4,616	6,246	4,185	5,449	3,997	5,897	40,012
18	4,000	4,000	6,136	4,719	5,542	5,449	3,997	4,349	38,192
19	5,632	4,000	4,616	6,246	4,185	4,016	2,676	4,349	35,720
20	4,000	4,000	4,616	4,719	2,992	2,765	1,765	4,349	29,205
21	4,000	5,622	4,616	3,000	5,542	5,449	3,997	4,349	36,576
22	5,632	5,622	4,616	4,719	4,185	5,449	3,997	5,897	40,118
23	4,000	4,000	4,616	6,246	4,185	5,449	3,997	4,349	36,842
24	5,632	5,622	4,616	6,246	4,185	4,016	2,676	5,897	38,890
25	5,632	5,622	4,616	4,719	4,185	4,016	2,676	4,349	35,815
26	5,632	5,622	6,136	6,246	4,185	4,016	3,997	5,897	41,731
27	5,632	4,000	6,136	4,719	5,542	5,449	3,997	5,897	41,372
28	5,632	5,622	4,616	4,719	4,185	4,016	3,997	5,897	38,684
29	5,632	5,622	6,136	4,719	5,542	4,016	3,997	5,897	41,561
30	5,632	5,622	6,136	4,719	2,992	4,016	3,997	5,897	39,010
31	5,632	4,000	6,136	6,246	4,185	4,016	3,997	5,897	40,108

BAMPIRAN

32	5,632	5,622	6,136	6,246	2,992	4,016	2,676	5,897	39,216
33	5,632	4,000	6,136	6,246	5,542	5,449	3,997	5,897	42,899
34	4,000	4,000	6,136	4,719	4,185	5,449	3,997	5,897	38,383
35	4,000	5,622	6,136	6,246	5,542	4,016	3,997	5,897	41,456
36	5,632	5,622	6,136	4,719	2,992	4,016	3,997	5,897	39,010
37	5,632	5,622	3,000	4,719	4,185	5,449	3,997	5,897	38,502
38	5,632	4,000	6,136	6,246	5,542	4,016	3,997	5,897	41,466
39	5,632	5,622	6,136	6,246	5,542	2,765	1,765	5,897	39,605
40	5,632	4,000	6,136	4,719	5,542	5,449	3,997	5,897	41,372
41	4,000	5,622	4,616	4,719	4,185	4,016	3,997	5,897	37,052
42	4,000	4,000	6,136	6,246	5,542	5,449	3,997	5,897	41,267
43	5,632	5,622	6,136	6,246	4,185	2,765	1,765	5,897	38,248
44	5,632	5,622	6,136	6,246	4,185	4,016	2,676	5,897	40,410

SUMMARY OUTPUT DARI EXCEL

MODEL SUMMARY

Model	R	R Square	Adjusted R Square	Std. Error of the Estimate	Change Statistics					Durbin-Watson
					R Square Change	F Change	df1	df2	Sig. F Change	
1	,554	,306	,290	2,50838	,306	18,551	1	42	,000	1,622

ANOVA

Model		Sum of Squares	df	Mean Square	F	Sig.
1	Regression	116,721	1	116,721	18,551	,000
	Residual	264,262	42	6,292		
	Total	380,983	43			

COEFFICIENTS

Model		Unstandardized Coefficients		Standardized Coefficients	t	Sig.	95% Confidence Interval for B		Correlations			Collinearity Statistics	
		B	Std. Error	Beta			Lower Bound	Upper Bound	Zero-order	Partial	Part	Tolerance	VIF
1	(Constant)	13,083	5,879		2,226	,031	1,220	24,946					
	SIA	,283	,066	,554	4,307	,000	,151	,416	,554	,554	,554	1,000	1,000

SUMMARY OUTPUT DARI EXCEL

MODEL SUMMARY

Model	R	R Square	Adjusted R Square	Std. Error of the Estimate	Change Statistics					Durbin-Watson
					R Square Change	F Change	df1	df2	Sig. F Change	
1	,682	,465	,453	1,74950	,465	36,553	1	42	,000	1,813

ANOVA

Model		Sum of Squares	df	Mean Square	F	Sig.
1	Regression	111,880	1	111,880	36,553	,000(a)
	Residual	128,552	42	3,061		
	Total	240,432	43			

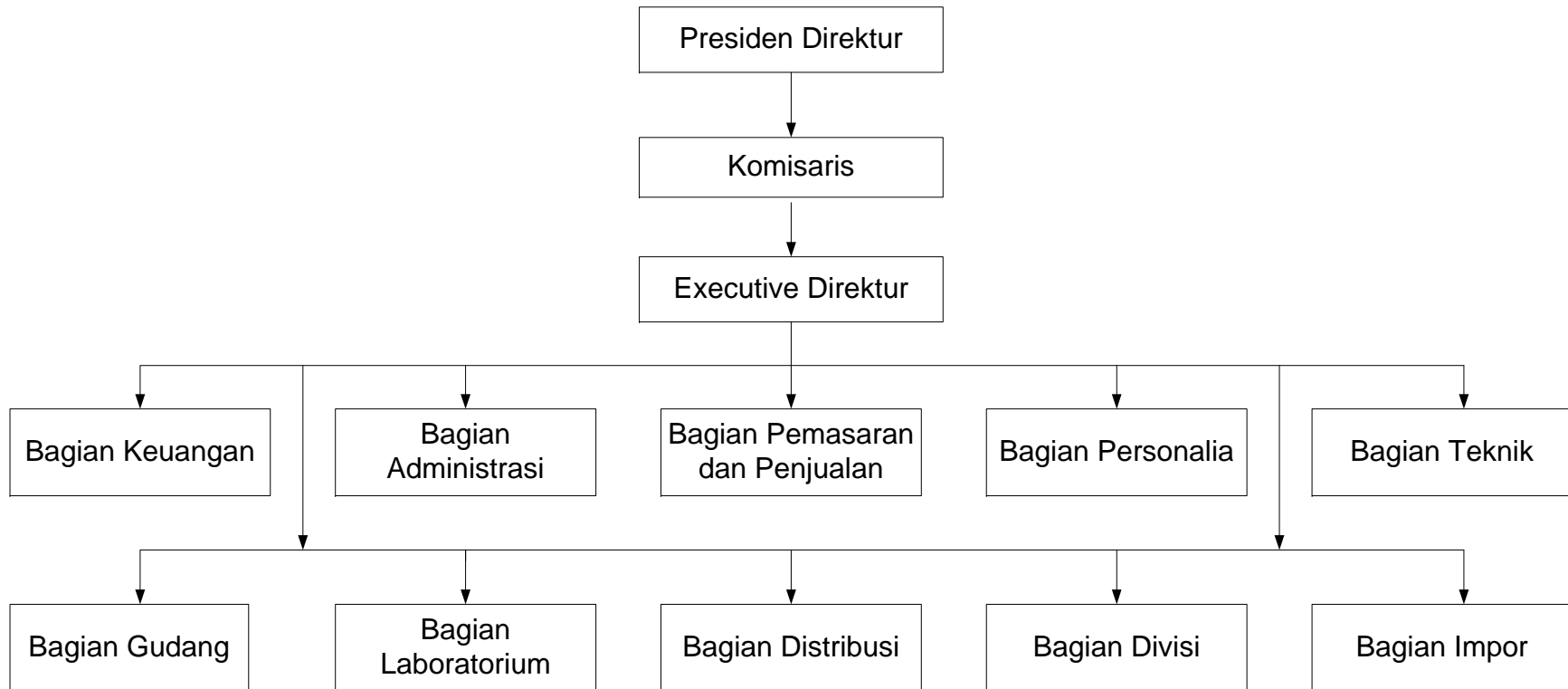
COEFFICIENTS

Model		Unstandardized Coefficients		Standardized Coefficients	t	Sig.	95% Confidence Interval for B		Correlations			Collinearity Statistics		
		B	Std. Error	Beta			Lower Bound	Upper Bound	Zero-order	Partial	Part	Tolerance	VIF	
1	(Constant)	5,928	4,917		1,206	,235	-3,995	15,851						
	SIA	,343	,057	,682	6,046	,000	,228	,457	,682	,682	,682	1,000	1,000	

PERHITUNGAN REGRESI

Perhitungan Regresi				
Resp	X	Y	XY	X ²
1.	93,570	41,767	3908,126	8755,263
2.	94,950	40,108	3808,282	9015,422
3.	93,166	38,776	3612,581	8679,945
4.	93,542	36,064	3373,541	8750,103
5.	69,606	30,929	2152,877	4844,995
6.	94,977	37,363	3548,641	9020,567
7.	89,673	40,204	3605,190	8041,248
8.	89,854	37,261	3348,017	8073,782
9.	90,656	38,457	3486,335	8218,538
10.	87,668	35,351	3099,178	7685,721
11.	86,892	35,138	3053,162	7550,186
12.	90,707	38,883	3526,937	8227,729
13.	89,576	33,245	2977,903	8023,805
14.	81,736	37,136	3035,358	6680,792
15.	85,179	32,533	2771,101	7255,448
16.	93,608	41,454	3880,402	8762,430
17.	93,204	40,012	3729,305	8686,974
18.	97,810	38,192	3735,534	9566,839
19.	91,690	35,720	3275,162	8407,086
20.	69,983	29,205	2043,866	4897,600
21.	93,003	36,576	3401,666	8649,568
22.	93,623	40,118	3755,924	8765,192
23.	88,971	36,842	3277,873	7915,902
24.	92,428	38,890	3594,572	8543,025
25.	89,144	35,815	3192,719	7946,717
26.	83,380	41,731	3479,490	6952,146
27.	93,308	41,372	3860,356	8706,382
28.	92,302	38,684	3570,630	8519,657
29.	94,913	41,561	3944,660	9008,400
30.	94,128	39,010	3671,977	8860,155
31.	81,006	40,108	3249,028	6561,981
32.	91,693	39,216	3595,861	8407,575
33.	87,018	42,899	3732,990	7572,081
34.	88,573	38,383	3399,671	7845,238
35.	88,206	41,456	3656,626	7780,276
36.	85,918	39,010	3351,675	7381,854
37.	87,933	38,502	3385,575	7732,242
38.	92,297	41,466	3827,146	8518,674
39.	83,989	39,605	3326,422	7054,216
40.	89,105	41,372	3686,483	7939,763
41.	83,608	37,052	3097,817	6990,247
42.	94,063	41,267	3881,682	8847,864
43.	84,680	38,248	3238,848	7170,725
44.	93,041	40,410	3759,785	8656,693
Total	3924,377	1687,390	150910,972	351471,048

STRUKTUR ORGANISASI PT. APOLLO AGUNG CHEMICALS INDUSTRY



Sumber : PT. Apollo Agung Chemicals Industry

