

Lampiran A

Listing Program

A1. Form1 (Form citra.frm)

```
Private Sub Command1_Click()  
Form3.Show  
End Sub  
  
Private Sub Command2_Click()  
Form2.Show  
End Sub  
  
Private Sub TbKeluar_Click()  
Unload Me  
  
End Sub
```

A2. Form2 (Formpa.frm)

```
Option Explicit  
Dim XX As Integer  
Dim YY As Integer  
Dim Lebar As Integer  
Dim Tinggi As Integer  
Dim i As Integer  
Dim j As Integer  
Dim x As Integer  
Dim warna As Single  
Dim sel1 As Integer, sel2 As Integer, sel3 As Integer  
Dim rata As Single  
Dim juma As Long  
Dim jumb As Long  
Dim jum2 As Long  
Dim r As Integer  
Dim g As Integer  
Dim B As Integer  
Dim n As Integer  
  
Private Sub Command1_Click()  
n = 0  
For i = 1 To Picture1.Width Step 15
```

```

    For j = 1 To Picture1.Height Step 15
        warna = Picture1.Point(i, j)
        r = warna And RGB(255, 0, 0)
        g = Int((warna And RGB(0, 255, 0)) / 256)
        B = Int(Int((warna And RGB(0, 0, 255)) / 256) /
256)
        x = (r + g + B) / 3
        If x < 128 Then x = 0 Else x = 255
        Picture1.PSet (i, j), RGB(x, x, x)
        If x = 0 Then
            juma = juma + 1
            Text1.Text = juma
        Else
            jumb = jumb + 1
            Text2.Text = jumb
        End If
    Next j
    Next i
End Sub

```

```

Private Sub Command3_Click()
Form3.Show
End Sub

```

```

Private Sub Picture1_MouseDown(Button As Integer, _
    Shift As Integer, x As Single, Y As Single)
    If Button = vbLeftButton Then
        Picture1.Cls
        XX = x
        YY = Y
    End If
End Sub

```

```

Private Sub Picture1_MouseMove(Button As Integer, _
    Shift As Integer, x As Single, Y As Single)
    If Button = vbLeftButton Then
        Picture1.Cls
        Picture1.Line (XX, YY)-(x, Y), , B
    End If
End Sub

```

```

Private Sub Picture1_MouseUp(Button As Integer, _
    Shift As Integer, x As Single, Y As Single)
    If Button = vbLeftButton Then
        If x > XX Then
            Lebar = x - XX

```

```

Else
    Lebar = XX - x
    XX = x
End If
If Y > YY Then
    Tinggi = Y - YY
Else
    Tinggi = YY - Y
    YY = Y
End If
End If
End Sub

Private Sub Command2_Click()
Dim sel As Double
If Tinggi = 0 And Lebar = 0 Then
    MsgBox "Tidak ada lokasi yang dipotong", _
        vbCritical, "Error"
End If

On Error Resume Next
PicHasil.Cls
PicHasil.PaintPicture Picture1.Picture, _
    0, 0, , , XX, YY, Lebar, Tinggi

For i = 1 To PicHasil.Width Step 15
For j = 1 To PicHasil.Height Step 15
    warna = PicHasil.Point(i, j)
    r = warna And RGB(255, 0, 0)
    g = Int((warna And RGB(0, 255, 0)) / 256)
    B = Int(Int((warna And RGB(0, 0, 255)) / 256) /
256)
    x = (r + g + B) / 3
    If x < 128 Then x = 0 Else x = 255
    PicHasil.PSet (i, j), RGB(x, x, x)
    If x = 0 Then
        jum2 = jum2 + 1
        Text3.Text = jum2
    End If
Next j
Next i
sel = Text1 / Text3
If n = 0 Then
    sell = CInt(sel)
    Text4.Text = sell

```

```

End If
If n = 1 Then
sel2 = CInt(sel)
Text5.Text = sel2
End If
If n = 2 Then
sel3 = CInt(sel)
Text6.Text = sel3
rata = ((sel1 + sel2 + sel3) / 3)
Text7.Text = CInt(rata)
End If

End Sub

Private Sub TbAmbil_Click()
Dim StrNmFile As String
Dim StrTipe As String
Dim pic As Picture

StrTipe = "Bitmap (*.bmp)|*.bmp"
StrTipe = StrTipe & "|GIF (*.gif)|*.gif"
StrTipe = StrTipe & "|JPEG (*.jpg)|*.jpg"

CommonDialog1.Filter = StrTipe
CommonDialog1.FileName = "*.jpg"
CommonDialog1.ShowOpen

On Error GoTo ErrorHandler
StrNmFile = CommonDialog1.FileName
Set pic = LoadPicture(StrNmFile)
Picture1.Picture = pic

TxtPathFile.Text = CommonDialog1.FileName
TxtNmFile.Text = CommonDialog1.FileTitle
For i = 1 To Picture1.Width Step 15
For j = 1 To Picture1.Height Step 15
Next j
Next i
TextUkur.Text = i & " X " & j & " point"
Exit Sub

ErrorHandler:
MsgBox " Anda Tidak Memilih, File tidak dapat
dibuka"
End Sub

```

```
Private Sub TbKeluar_Click()  
Unload Me
```

```
End Sub
```

```
Private Sub TbReset_Click()
```

```
n = n + 1
```

```
Picture1.Cls
```

```
PicHasil.Cls
```

```
Text3 = ""
```

```
juma = 0
```

```
jumb = 0
```

```
jum2 = 0
```

```
End Sub
```

A3. Form3 (formdoppler.frm)

```
Private Sub Command1_Click()
```

```
Form2.Show
```

```
End Sub
```

```
Private Sub Form_Load()
```

```
Dim prosen1 As Double
```

```
Dim prosen2 As Double
```

```
End Sub
```

```
Private Sub TbAmbil_Click()
```

```
Dim StrNmFile As String
```

```
Dim StrTipe As String
```

```
Dim pic As Picture
```

```
StrTipe = "Bitmap (*.bmp)|*.bmp"
```

```
StrTipe = StrTipe & "|GIF (*.gif)|*.gif"
```

```
StrTipe = StrTipe & "|JPEG (*.jpg)|*.jpg"
```

```
CommonDialog1.Filter = StrTipe
```

```
CommonDialog1.FileName = "*.jpg"
```

```
CommonDialog1.ShowOpen
```

```
On Error GoTo ErrorHandler
```

```
StrNmFile = CommonDialog1.FileName
```

```
Set pic = LoadPicture(StrNmFile)
```

```
Image1.Picture = pic
```

```
ImageHasil.PaintPicture Image1, 0, 0, 2655, 2655
```

```

    TxtPathFile.Text = CommonDialog1.FileName
    TxtNmFile.Text = CommonDialog1.FileTitle
    For i = 1 To ImageHasil.Width Step 15
    For j = 1 To ImageHasil.Height Step 15
    Next j
    Next i
    TextUkur.Text = i & " X " & j & " point"
    Text1.Text = ""
    Text2.Text = ""
    TextHasil.Text = ""
    TextProsen.Text = ""
    Exit Sub

```

ErrorHandler:

```

    MsgBox " Anda Tidak Memilih, File tidak dapat
dibuka"
End Sub

```

```

Private Sub TbKeluar_Click()
Unload Me

```

End Sub

```

Private Sub TbMerah_Click()
Dim jumc As Integer
Dim jumd As Integer
jumc = 0
jumd = 0
For i = 1 To ImageHasil.Width Step 15
    For j = 1 To ImageHasil.Height Step 15
        warna = ImageHasil.Point(i, j)
        r = warna And RGB(255, 0, 0)
        g = Int((warna And RGB(0, 255, 0)) / 256)
        B = Int(Int((warna And RGB(0, 0, 255)) / 256) /
256)
        If r > B And r > g Then ImageHasil.PSet (i, j),
RGB(r, 0, 0) Else ImageHasil.PSet (i, j), RGB(255, 255,
255)
    Next j
Next i
t = 55
For i = 1 To ImageHasil.Width Step 15
For j = 1 To ImageHasil.Height Step 15
    warna = ImageHasil.Point(i, j)
    r = warna And RGB(255, 0, 0)

```

```

        g = Int((warna And RGB(0, 255, 0)) / 256)
        B = Int(Int((warna And RGB(0, 0, 255)) / 256) /
256)
        x = (r + g + B) / 3
        If x > t And r > B And r > g Then
ImageHasil.PSet (i, j), RGB(r, 0, 0) Else
ImageHasil.PSet (i, j), RGB(255, 255, 255)
        Next j
        Next i
        For i = 1 To ImageHasil.Width Step 15
        For j = 1 To ImageHasil.Height Step 15
        warna = ImageHasil.Point(i, j)
        r = warna And RGB(255, 0, 0)
        g = Int((warna And RGB(0, 255, 0)) / 256)
        B = Int(Int((warna And RGB(0, 0, 255)) / 256) /
256)
        x = (r + g + B) / 3
        If x <> 255 Then x = 0 Else x = 255
        ImageHasil.PSet (i, j), RGB(r, x, x)
        If x = 0 Then
        jumc = jumc + 1
        Else
        jumd = jumd + 1
        End If
Next j
        Next i
On Error GoTo ErrorHandler
        rat = jumd / jumc
        ratlg = CLng(rat)
        prosen2 = jumc / (jumc + jumd)
        prosenst2 = Format(prosen2, "0.00%")
        Text1.Text = "Perbandingan Luas: " & jumc / jumc &
" : " & ratlg
        Text2.Text = "Prosentase: " & prosenst2

ImageHasil.PaintPicture Image1, 0, 0, 2655, 2655

Dim juma As Integer
Dim jumb As Integer
juma = 0
jumb = 0
For i = 1 To ImageHasil.Width Step 15
        For j = 1 To ImageHasil.Height Step 15
        warna = ImageHasil.Point(i, j)
        r = warna And RGB(255, 0, 0)
        g = Int((warna And RGB(0, 255, 0)) / 256)

```

```

        B = Int(Int((warna And RGB(0, 0, 255)) / 256) /
256)
        If B > r And B > g Then ImageHasil.PSet (i, j),
RGB(0, 0, B) Else ImageHasil.PSet (i, j), RGB(255, 255,
255)
        Next j
    Next i

    For i = 1 To ImageHasil.Width Step 15
    For j = 1 To ImageHasil.Height Step 15
        warna = ImageHasil.Point(i, j)
        r = warna And RGB(255, 0, 0)
        g = Int((warna And RGB(0, 255, 0)) / 256)
        B = Int(Int((warna And RGB(0, 0, 255)) / 256) /
256)
        x = (r + g + B) / 3
        If x > t And B > r And B > g Then
ImageHasil.PSet (i, j), RGB(0, 0, B) Else
ImageHasil.PSet (i, j), RGB(255, 255, 255)
        Next j
    Next i
    For i = 1 To ImageHasil.Width Step 15
    For j = 1 To ImageHasil.Height Step 15
        warna = ImageHasil.Point(i, j)
        r = warna And RGB(255, 0, 0)
        g = Int((warna And RGB(0, 255, 0)) / 256)
        B = Int(Int((warna And RGB(0, 0, 255)) / 256) /
256)
        x = (r + g + B) / 3
        If x <> 255 Then x = 0 Else x = 255
        ImageHasil.PSet (i, j), RGB(x, x, B)
        If x = 0 Then
            juma = juma + 1
        Else
            jumb = jumb + 1
        End If
    Next j
    Next i
    rat = jumb / juma
    ratlg = CLng(rat)
    prosen1 = juma / (juma + jumb)
    prosenst1 = Format(prosen1, "0.00%")
    prosen3 = prosen1 + prosen2
    prosenst3 = Format(prosen3, "0.00%")
    TextHasil.Text = "Perbandingan Luas: " & juma / juma &
" : " & ratlg
    TextProsen.Text = "Prosentase: " & prosenst1

```



```

Text3.Text = prosenst3
If prosen3 > 0.01 And prosen3 < 0.02 Then Text3.Text =
"Jumlah Pembuluh Darah: " & prosenst3 & " Kriteria
Trofoblas: Mola Hidatidosa" _
Else If prosen3 > 0.02 And prosen3 < 0.05 Then
Text3.Text = "Jumlah Pembuluh Darah: " & prosenst3 & "
Kriteria Trofoblas: Border Line" _
Else Text3.Text = "Jumlah Pembuluh Darah: " & prosenst3
& " Kriteria Trofoblas: Choriocarcinoma"
Exit Sub
ErrorHandler:
    MsgBox " Tidak Ada Pembuluh Darah, Keadaan Normal,
atau Ambil Gambar Terlebih Dahulu!"
End Sub

Private Sub TbReset_Click()
ImageHasil.PaintPicture Image1, 0, 0, 2655, 2655

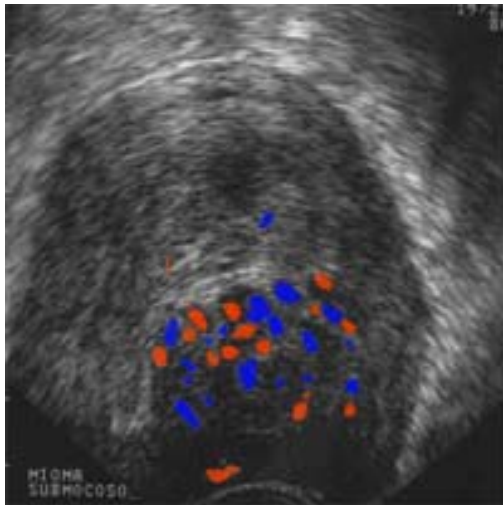
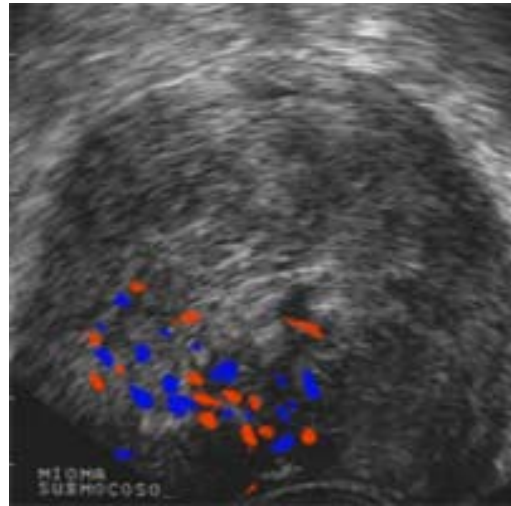
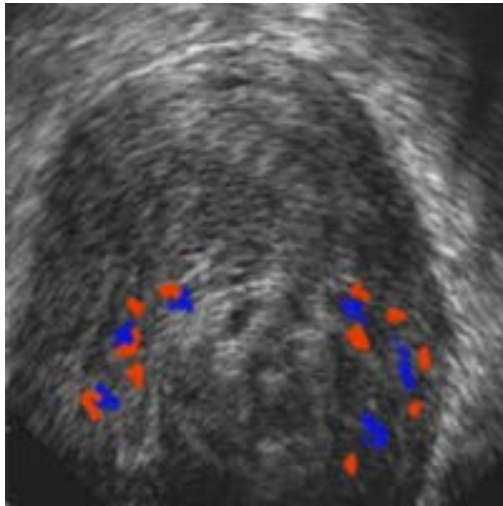
End Sub

```

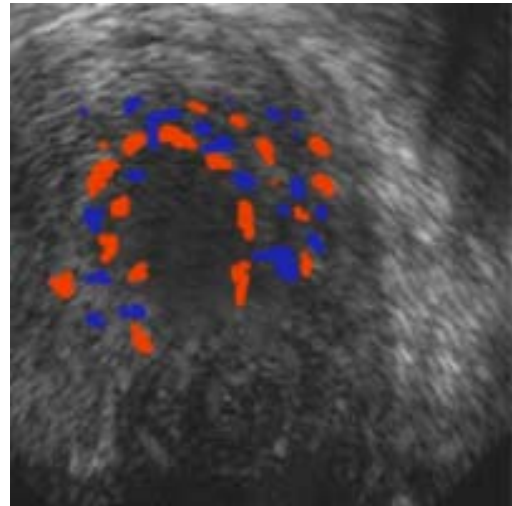
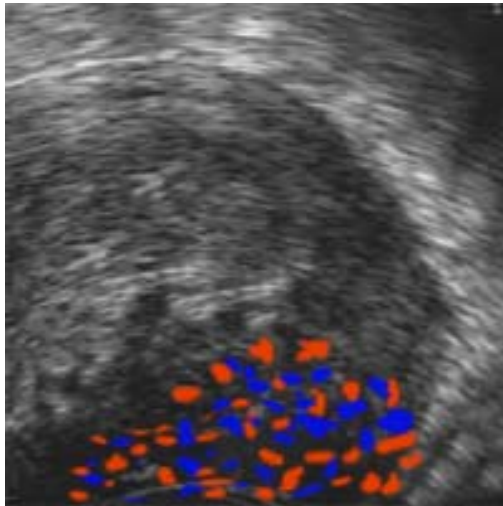
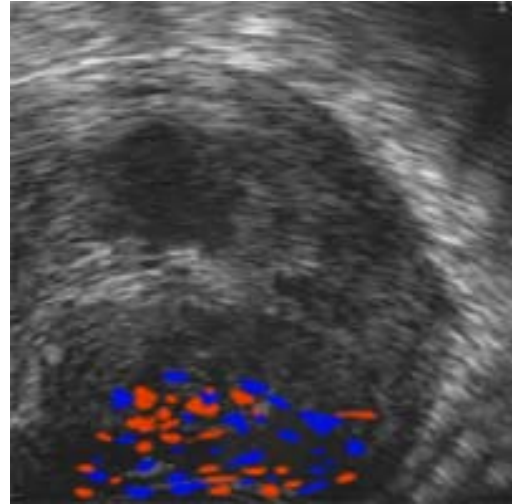
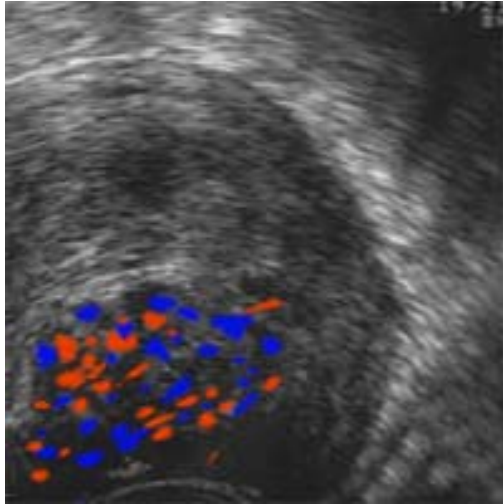
Lampiran B

Citra USG Doppler

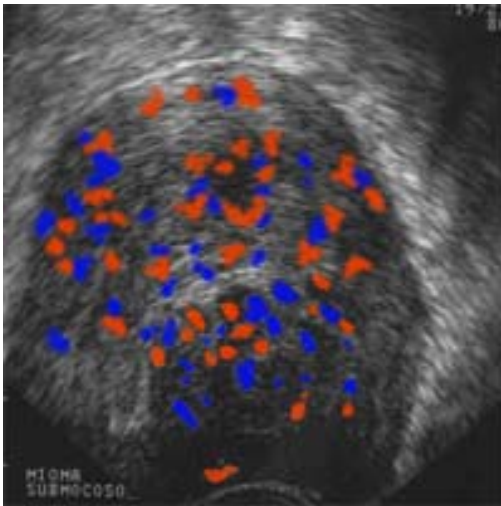
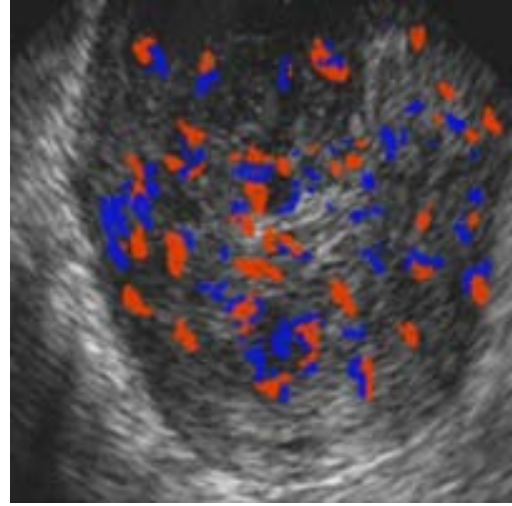
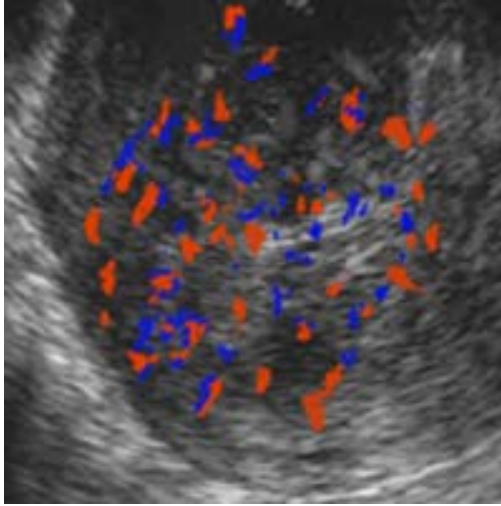
B1. Mola Hidatidosa



B2. Border Line



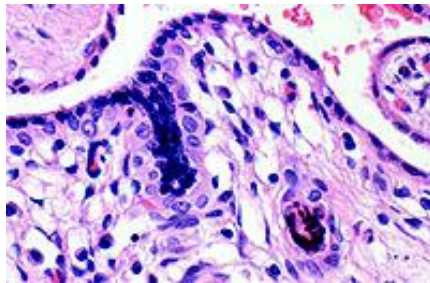
B3. Choriocarcinoma



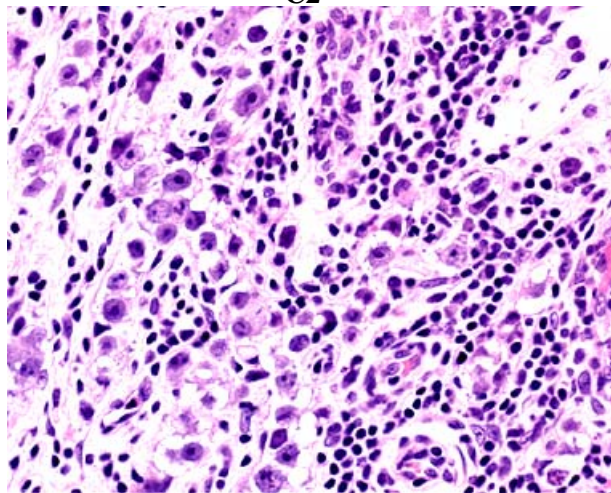
Lampiran C

Citra Patologi Anatomi

C1



C2



C3

