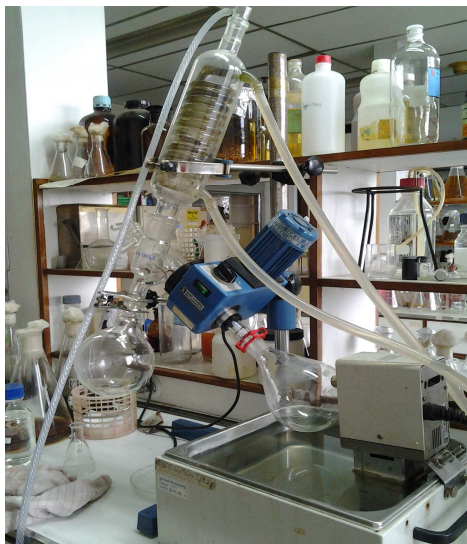
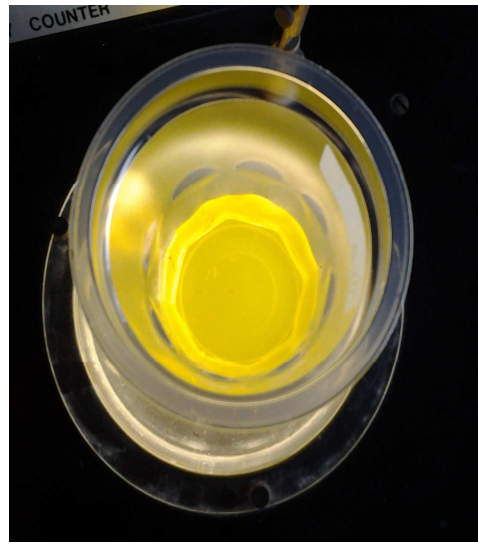


Lampiran 1





**Lampiran 2**  
**Analisi Statistik**

**Oneway**

**Notes**

Output Created		30-Jan-2013 19:54:46
Comments		
Input	Active Dataset	DataSet0
	Filter	<none>
	Weight	<none>
	Split File	<none>
	N of Rows in Working Data File	64
Missing Value Handling	Definition of Missing	User-defined missing values are treated as missing.
	Cases Used	Statistics for each analysis are based on cases with no missing data for any variable in the analysis.
Syntax		ONEWAY jumlah_larva_yang_mati BY perlakuan /MISSING ANALYSIS /POSTHOC=DUKEY ALPHA(0.05).
Resources	Processor Time	0:00:00.109
	Elapsed Time	0:00:00.176

**ANOVA**

Jumlah Larva yang Mati

	Sum of Squares	df	Mean Square	F	Sig.
Between Groups	6703.359	7	957.623	144.889	.000
Within Groups	370.125	56	6.609		
Total	7073.484	63			

## Post Hoc Tests

### Multiple Comparisons

Jumlah Larva yang Mati

Tukey HSD

(I) perlakuan	(J) perlakuan	Mean Difference (I-J)	Std. Error	Sig.	95% Confidence Interval	
					Lower Bound	Upper Bound
kontrol negatif	500 ppm	-9.500 <sup>*</sup>	1.285	.000	-13.55	-5.45
	1000 ppm	-12.125 <sup>*</sup>	1.285	.000	-16.17	-8.08
	2000 ppm	-19.750 <sup>*</sup>	1.285	.000	-23.80	-15.70
	3000 ppm	-26.625 <sup>*</sup>	1.285	.000	-30.67	-22.58
	4000 ppm	-27.500 <sup>*</sup>	1.285	.000	-31.55	-23.45
	5000 ppm	-28.375 <sup>*</sup>	1.285	.000	-32.42	-24.33
	6000 ppm	-30.000 <sup>*</sup>	1.285	.000	-34.05	-25.95
500 ppm	kontrol negatif	9.500 <sup>*</sup>	1.285	.000	5.45	13.55
	1000 ppm	-2.625	1.285	.464	-6.67	1.42
	2000 ppm	-10.250 <sup>*</sup>	1.285	.000	-14.30	-6.20
	3000 ppm	-17.125 <sup>*</sup>	1.285	.000	-21.17	-13.08
	4000 ppm	-18.000 <sup>*</sup>	1.285	.000	-22.05	-13.95
	5000 ppm	-18.875 <sup>*</sup>	1.285	.000	-22.92	-14.83
	6000 ppm	-20.500 <sup>*</sup>	1.285	.000	-24.55	-16.45
1000 ppm	kontrol negatif	12.125 <sup>*</sup>	1.285	.000	8.08	16.17
	500 ppm	2.625	1.285	.464	-1.42	6.67
	2000 ppm	-7.625 <sup>*</sup>	1.285	.000	-11.67	-3.58
	3000 ppm	-14.500 <sup>*</sup>	1.285	.000	-18.55	-10.45
	4000 ppm	-15.375 <sup>*</sup>	1.285	.000	-19.42	-11.33
	5000 ppm	-16.250 <sup>*</sup>	1.285	.000	-20.30	-12.20
	6000 ppm	-17.875 <sup>*</sup>	1.285	.000	-21.92	-13.83
2000 ppm	kontrol negatif	19.750 <sup>*</sup>	1.285	.000	15.70	23.80
	500 ppm	10.250 <sup>*</sup>	1.285	.000	6.20	14.30
	1000 ppm	7.625 <sup>*</sup>	1.285	.000	3.58	11.67

	3000 ppm	-6.875*	1.285	.000	-10.92	-2.83
	4000 ppm	-7.750*	1.285	.000	-11.80	-3.70
	5000 ppm	-8.625*	1.285	.000	-12.67	-4.58
	6000 ppm	-10.250*	1.285	.000	-14.30	-6.20
3000 ppm	kontrol negatif	26.625*	1.285	.000	22.58	30.67
	500 ppm	17.125*	1.285	.000	13.08	21.17
	1000 ppm	14.500*	1.285	.000	10.45	18.55
	2000 ppm	6.875*	1.285	.000	2.83	10.92
	4000 ppm	-.875	1.285	.997	-4.92	3.17
	5000 ppm	-1.750	1.285	.870	-5.80	2.30
	6000 ppm	-3.375	1.285	.169	-7.42	.67
4000 ppm	kontrol negatif	27.500*	1.285	.000	23.45	31.55
	500 ppm	18.000*	1.285	.000	13.95	22.05
	1000 ppm	15.375*	1.285	.000	11.33	19.42
	2000 ppm	7.750*	1.285	.000	3.70	11.80
	3000 ppm	.875	1.285	.997	-3.17	4.92
	5000 ppm	-.875	1.285	.997	-4.92	3.17
	6000 ppm	-2.500	1.285	.527	-6.55	1.55
5000 ppm	kontrol negatif	28.375*	1.285	.000	24.33	32.42
	500 ppm	18.875*	1.285	.000	14.83	22.92
	1000 ppm	16.250*	1.285	.000	12.20	20.30
	2000 ppm	8.625*	1.285	.000	4.58	12.67
	3000 ppm	1.750	1.285	.870	-2.30	5.80
	4000 ppm	.875	1.285	.997	-3.17	4.92
	6000 ppm	-1.625	1.285	.908	-5.67	2.42
6000 ppm	kontrol negatif	30.000*	1.285	.000	25.95	34.05
	500 ppm	20.500*	1.285	.000	16.45	24.55
	1000 ppm	17.875*	1.285	.000	13.83	21.92
	2000 ppm	10.250*	1.285	.000	6.20	14.30
	3000 ppm	3.375	1.285	.169	-.67	7.42
	4000 ppm	2.500	1.285	.527	-1.55	6.55
	5000 ppm	1.625	1.285	.908	-2.42	5.67

## Homogeneous Subsets

### Jumlah Larva yang Mati

Tukey HSD<sup>a</sup>

perlakuan	N	Subset for alpha = 0.05			
		1	2	3	4
kontrol negatif	8	.00			
500 ppm	8		9.50		
1000 ppm	8		12.13		
2000 ppm	8			19.75	
3000 ppm	8				26.63
4000 ppm	8				27.50
5000 ppm	8				28.38
6000 ppm	8				30.00
Sig.		1.000	.464	1.000	.169

Means for groups in homogeneous subsets are displayed.

a. Uses Harmonic Mean Sample Size = 8,000.

**Lampiran 3**  
**Data Subjek Penelitian**

NO	DOSIS	n	JUMLAH LARVA MATI								RATA	RATA %
			UMUR JAM KE-									
			1	2	3	4	5	6	7	8		
1	I	30	0	0	0	0	0	0	0	0	0	0
2	II	30	3	3	5	10	12	13	15	15	10	33
3	III	30	5	7	8	13	15	15	17	17	12	40
4	IV	30	19	19	20	20	20	20	20	20	20	67
5	V	30	25	25	26	26	27	28	28	28	27	90
6	VI	30	26	26	27	27	28	28	29	29	28	93
7	VII	30	28	28	28	28	28	28	29	30	28	93
8	VIII	30	30	30	30	30	30	30	30	30	30	100

**Lampiran 4**

**Tabel Uji Beda Rata-rata Tukey Jumlah Larva yang Mati Setelah Pemberian Perlakuan Selama 48 jam.**

Kelompok	JUMLAH LARVA YANG MATI (%)							
	VII	VII	VI	V	IV	III	II	I
	100	93	93	90	67	40	33	0
8		NS	NS	NS	*	*	*	*
7			NS	NS	*	*	*	*
6				NS	*	*	*	*
5					*	*	*	*
4						*	*	*
3							*	*
2								*
1								



## Lampiran 5

**Diagram Rata-rata Jumlah Larva yang Mati Setelah Pemberian Perlakuan Selama 48 Jam.**

