

L

A

M

P

I

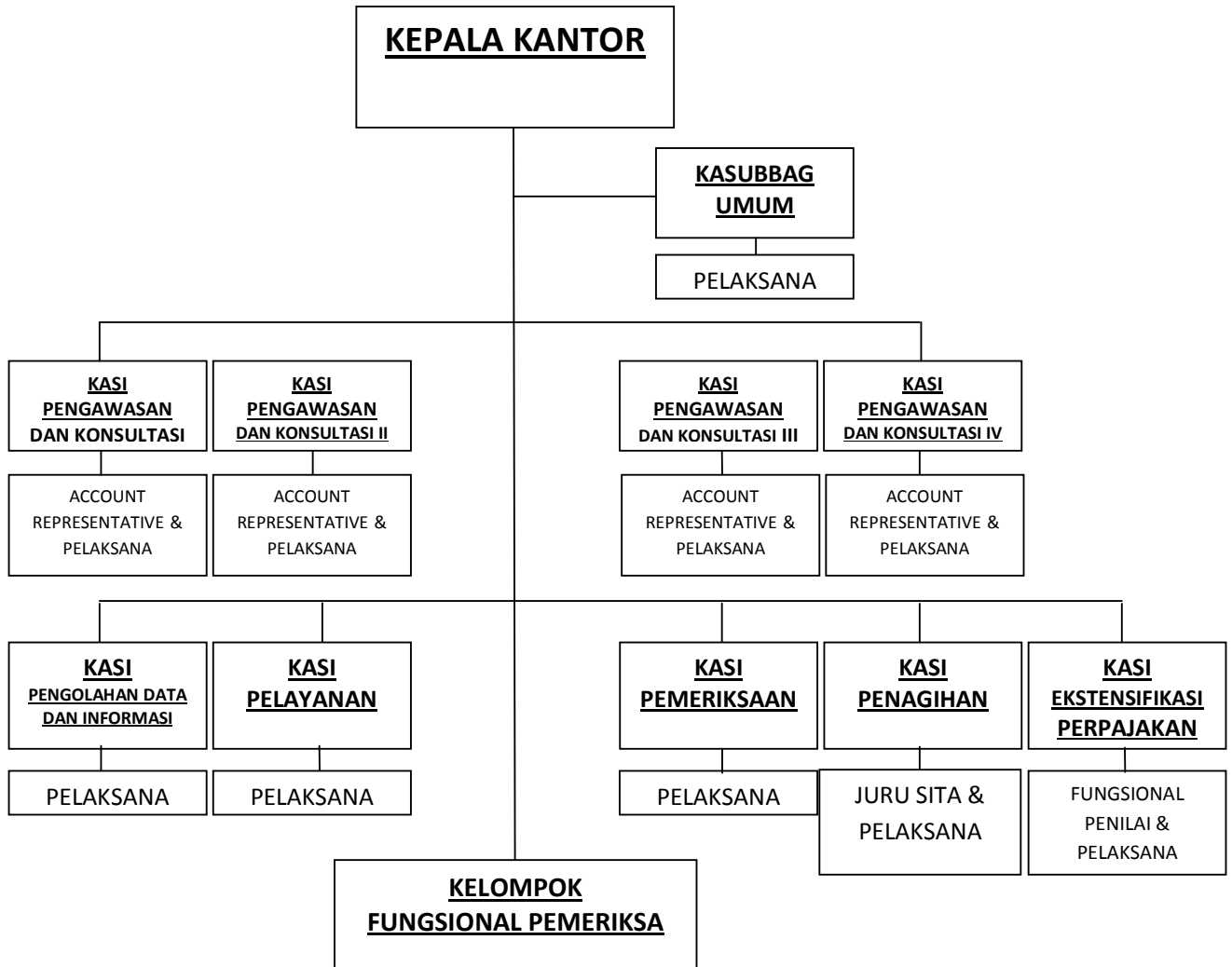
R

A

N

LAMPIRAN A

STRUKTUR ORGANISASI KANTOR PELAYANAN PAJAK BOJONAGARA



LAMPIRAN B

CRITICAL VALUES

Critical Values for the t-Distribution (Two-Tailed)					
v = n - 2	α				
	0,1	0,05	0,025	0,01	0,005
1	6,314	12,706	25,452	63,657	127,321
2	2,920	4,303	6,205	9,925	14,089
3	2,353	3,182	4,177	5,841	7,453
4	2,132	2,776	3,495	4,604	5,598
5	2,015	2,571	3,163	4,032	4,773
6	1,943	2,447	2,969	3,707	4,317
7	1,895	2,365	2,841	3,499	4,029
8	1,860	2,306	2,752	3,355	3,833
9	1,833	2,262	2,685	3,250	3,690
10	1,812	2,228	2,634	3,169	3,581
11	1,796	2,201	2,593	3,106	3,497
12	1,782	2,179	2,560	3,055	3,428
13	1,771	2,160	2,533	3,012	3,372
14	1,761	2,145	2,510	2,977	3,326
15	1,753	2,131	2,490	2,947	3,286
16	1,746	2,120	2,473	2,921	3,252
17	1,740	2,110	2,458	2,898	3,222
18	1,734	2,101	2,445	2,878	3,197
19	1,729	2,093	2,433	2,861	3,174
20	1,725	2,086	2,423	2,845	3,153
21	1,721	2,080	2,414	2,831	3,135
22	1,717	2,074	2,405	2,819	3,119
23	1,714	2,069	2,398	2,807	3,104
24	1,711	2,064	2,391	2,797	3,091
25	1,708	2,060	2,385	2,787	3,078
26	1,706	2,056	2,379	2,779	3,067
27	1,703	2,052	2,373	2,771	3,057
28	1,701	2,048	2,368	2,763	3,047
29	1,699	2,045	2,364	2,756	3,038
30	1,697	2,042	2,360	2,750	3,030
31	1,696	2,040	2,356	2,744	3,022
32	1,694	2,037	2,352	2,738	3,015
33	1,692	2,035	2,348	2,733	3,008
34	1,691	2,032	2,345	2,728	3,002
35	1,690	2,030	2,342	2,724	2,996
36	1,688	2,028	2,339	2,719	2,990
37	1,687	2,026	2,336	2,715	2,985
38	1,686	2,024	2,334	2,712	2,980
39	1,685	2,023	2,331	2,708	2,976
40	1,684	2,021	2,329	2,704	2,971
41	1,683	2,020	2,327	2,701	2,967

42	1,682	2,018	2,325	2,698	2,963
43	1,681	2,017	2,323	2,695	2,959
44	1,680	2,015	2,321	2,692	2,956
45	1,679	2,014	2,319	2,690	2,952
46	1,679	2,013	2,317	2,687	2,949
47	1,678	2,012	2,315	2,685	2,946
48	1,677	2,011	2,314	2,682	2,943
49	1,677	2,010	2,312	2,680	2,940
50	1,676	2,009	2,311	2,678	2,937
51	1,675	2,008	2,310	2,676	2,934
52	1,675	2,007	2,308	2,674	2,932
53	1,674	2,006	2,307	2,672	2,929
54	1,674	2,005	2,306	2,670	2,927
55	1,673	2,004	2,304	2,668	2,925
56	1,673	2,003	2,303	2,667	2,923
57	1,672	2,002	2,302	2,665	2,920
58	1,672	2,002	2,301	2,663	2,918
59	1,671	2,001	2,300	2,662	2,916
60	1,671	2,000	2,299	2,660	2,915
61	1,670	2,000	2,298	2,659	2,913
62	1,670	1,999	2,297	2,657	2,911
63	1,669	1,998	2,296	2,656	2,909
64	1,669	1,998	2,295	2,655	2,908
65	1,669	1,997	2,295	2,654	2,906
66	1,668	1,997	2,294	2,652	2,904
67	1,668	1,996	2,293	2,651	2,903
68	1,668	1,995	2,292	2,650	2,902
69	1,667	1,995	2,291	2,649	2,900
70	1,667	1,994	2,291	2,648	2,899
71	1,667	1,994	2,290	2,647	2,897
72	1,666	1,993	2,289	2,646	2,896
73	1,666	1,993	2,289	2,645	2,895
74	1,666	1,993	2,288	2,644	2,894
75	1,665	1,992	2,287	2,643	2,892
76	1,665	1,992	2,287	2,642	2,891
77	1,665	1,991	2,286	2,641	2,890
78	1,665	1,991	2,285	2,640	2,889
79	1,664	1,990	2,285	2,640	2,888
80	1,664	1,990	2,284	2,639	2,887
81	1,664	1,990	2,284	2,638	2,886
82	1,664	1,989	2,283	2,637	2,885
83	1,663	1,989	2,283	2,636	2,884
84	1,663	1,989	2,282	2,636	2,883
85	1,663	1,988	2,282	2,635	2,882
86	1,663	1,988	2,281	2,634	2,881
87	1,663	1,988	2,281	2,634	2,880
88	1,662	1,987	2,280	2,633	2,880
89	1,662	1,987	2,280	2,632	2,879
90	1,662	1,987	2,280	2,632	2,878
91	1,662	1,986	2,279	2,631	2,877
92	1,662	1,986	2,279	2,630	2,876
93	1,661	1,986	2,278	2,630	2,876

94	1,661	1,986	2,278	2,629	2,875
95	1,661	1,985	2,277	2,629	2,874
96	1,661	1,985	2,277	2,628	2,873
97	1,661	1,985	2,277	2,627	2,873
98	1,661	1,984	2,276	2,627	2,872
99	1,660	1,984	2,276	2,626	2,871
100	1,660	1,984	2,276	2,626	2,871
101	1,660	1,984	2,275	2,625	2,870
102	1,660	1,983	2,275	2,625	2,869
103	1,660	1,983	2,275	2,624	2,869
104	1,660	1,983	2,274	2,624	2,868
105	1,659	1,983	2,274	2,623	2,868
106	1,659	1,983	2,274	2,623	2,867
107	1,659	1,982	2,273	2,623	2,866
108	1,659	1,982	2,273	2,622	2,866
109	1,659	1,982	2,273	2,622	2,865
110	1,659	1,982	2,272	2,621	2,865
111	1,659	1,982	2,272	2,621	2,864
112	1,659	1,981	2,272	2,620	2,864
113	1,658	1,981	2,272	2,620	2,863
114	1,658	1,981	2,271	2,620	2,863
115	1,658	1,981	2,271	2,619	2,862
116	1,658	1,981	2,271	2,619	2,862
117	1,658	1,980	2,271	2,619	2,861
118	1,658	1,980	2,270	2,618	2,861
119	1,658	1,980	2,270	2,618	2,860
120	1,658	1,980	2,270	2,617	2,860
121	1,658	1,980	2,270	2,617	2,859
122	1,657	1,980	2,269	2,617	2,859
123	1,657	1,979	2,269	2,616	2,859
124	1,657	1,979	2,269	2,616	2,858
125	1,657	1,979	2,269	2,616	2,858
126	1,657	1,979	2,269	2,615	2,857
127	1,657	1,979	2,268	2,615	2,857
128	1,657	1,979	2,268	2,615	2,857
129	1,657	1,979	2,268	2,614	2,856
130	1,657	1,978	2,268	2,614	2,856
131	1,657	1,978	2,267	2,614	2,855
132	1,656	1,978	2,267	2,614	2,855
133	1,656	1,978	2,267	2,613	2,855
134	1,656	1,978	2,267	2,613	2,854
135	1,656	1,978	2,267	2,613	2,854
136	1,656	1,978	2,266	2,612	2,854
137	1,656	1,977	2,266	2,612	2,853
138	1,656	1,977	2,266	2,612	2,853
139	1,656	1,977	2,266	2,612	2,853
140	1,656	1,977	2,266	2,611	2,852
141	1,656	1,977	2,266	2,611	2,852
142	1,656	1,977	2,265	2,611	2,852
143	1,656	1,977	2,265	2,611	2,851
144	1,656	1,977	2,265	2,610	2,851
145	1,655	1,976	2,265	2,610	2,851

146	1,655	1,976	2,265	2,610	2,850
147	1,655	1,976	2,265	2,610	2,850
148	1,655	1,976	2,264	2,609	2,850
149	1,655	1,976	2,264	2,609	2,849
150	1,655	1,976	2,264	2,609	2,849
151	1,655	1,976	2,264	2,609	2,849
152	1,655	1,976	2,264	2,609	2,849
153	1,655	1,976	2,264	2,608	2,848
154	1,655	1,975	2,264	2,608	2,848
155	1,655	1,975	2,263	2,608	2,848
156	1,655	1,975	2,263	2,608	2,848
157	1,655	1,975	2,263	2,608	2,847
158	1,655	1,975	2,263	2,607	2,847
159	1,654	1,975	2,263	2,607	2,847
160	1,654	1,975	2,263	2,607	2,846
161	1,654	1,975	2,263	2,607	2,846
162	1,654	1,975	2,262	2,607	2,846
163	1,654	1,975	2,262	2,606	2,846
164	1,654	1,975	2,262	2,606	2,846
165	1,654	1,974	2,262	2,606	2,845
166	1,654	1,974	2,262	2,606	2,845
167	1,654	1,974	2,262	2,606	2,845
168	1,654	1,974	2,262	2,605	2,845
169	1,654	1,974	2,262	2,605	2,844
170	1,654	1,974	2,261	2,605	2,844
171	1,654	1,974	2,261	2,605	2,844
172	1,654	1,974	2,261	2,605	2,844
173	1,654	1,974	2,261	2,605	2,843
174	1,654	1,974	2,261	2,604	2,843
175	1,654	1,974	2,261	2,604	2,843
176	1,654	1,974	2,261	2,604	2,843
177	1,654	1,973	2,261	2,604	2,843
178	1,653	1,973	2,261	2,604	2,842
179	1,653	1,973	2,260	2,604	2,842
180	1,653	1,973	2,260	2,603	2,842
181	1,653	1,973	2,260	2,603	2,842
182	1,653	1,973	2,260	2,603	2,842
183	1,653	1,973	2,260	2,603	2,841
184	1,653	1,973	2,260	2,603	2,841
185	1,653	1,973	2,260	2,603	2,841
186	1,653	1,973	2,260	2,603	2,841
187	1,653	1,973	2,260	2,602	2,841
188	1,653	1,973	2,259	2,602	2,841
189	1,653	1,973	2,259	2,602	2,840
190	1,653	1,973	2,259	2,602	2,840
191	1,653	1,972	2,259	2,602	2,840
192	1,653	1,972	2,259	2,602	2,840
193	1,653	1,972	2,259	2,602	2,840
194	1,653	1,972	2,259	2,601	2,839
195	1,653	1,972	2,259	2,601	2,839
196	1,653	1,972	2,259	2,601	2,839
197	1,653	1,972	2,259	2,601	2,839

198	1,653	1,972	2,259	2,601	2,839
199	1,653	1,972	2,258	2,601	2,839
200	1,653	1,972	2,258	2,601	2,839

LAMPIRAN C

Hasil Output SPSS

Regression

Model Summary

Model	R	R Square	Adjusted R Square	Std. Error of the Estimate
1	1,000 ^a	1,000	1,000	,00000

a. Predictors: (Constant), X2, X1

ANOVA^b

Model		Sum of Squares	df	Mean Square	F	Sig.
1	Regression	17661279	2	8830639,700	.	. ^a
	Residual	,000	1	,000		
	Total	17661279	3			

a. Predictors: (Constant), X2, X1

b. Dependent Variable: Y

Coefficients

Model		Unstandardized Coefficients		Standardized Coefficients	t	Sig.	Correlations		
		B	Std. Error	Beta			Zero-order	Partial	Part
1	(Constant)	,000	,000		-,157	,901			
	X1	1,000	,001	,000	729,943	,001	-,615	1,000	,000
	X2	1,000	,000	1,000	227714881,350	,000	1,000	1,000	,789

a. Dependent Variable: Y

Column1	Column2	REALISASI	Column3	Column4
KDMAP	LPP5	2012	2011	2010
411111	PPH Minyak Bumi			
411112	PPH Gas Alam	650,000		1,293,160
411121	PPH Pasal 21	660,253,583	755,668,316	579,662,456
411122	PPH Pasal 22 Dalam Negeri	235,830,501	116,995,954	932,805,278
411123	PPH Pasal 22 Impor	84,764,877	54,503,619	86,099,385
411124	PPH Pasal 23	413,162,969	277,494,986	342,923,917
411125	PPH Pasal 25 Orang Pribadi	17,866,927,036	14,827,121,896	13,422,435,079
	PPH Pasal 29 Orang Pribadi	12,059,949,381	8,536,159,381	8,481,147,707
411126	PPH Pasal 25 Badan	513,000	1,325,740	3,496,297
	PPH Pasal 29 Badan	4,155,929	1,692,395	
411127	PPH Pasal 26		6,225,000	
411128	PPH Final & FLN	54,333,841,233	42,164,231,027	30,287,654,387
411129	PPH Non Migas Lainnya	1,266,921	1,485,456	1,009,500
411131	PPH Final & FLN		1,017,385	
411211	PPN Dalam Negeri	24,231,748,600	12,627,069,421	10,989,627,673
411212	PPN Impor	363,612,577	72,213,123	113,740,280
411219	PPN & PPnBM Lainnya			400,000
411221	PPnBM Dalam Negeri			
411222	PPnBM Impor	8,283,000	18,168,000	4,378,673
411312	PBB Perkotaan	8,234,894		
411411	BPHTB			20,027,703,159
411621	Bunga Penagihan PPh	187,440		71,282
	Grand Total	110,273,381,941	79,461,371,699	85,274,448,233

Column5	Column6	RENCANA	Column7	Column8	Column9
2009	2008	2012	2011	2010	2009
	616,551				
133,600	130,500				
856,480,299	764,186,997	431,505,818	671,666,438	312,985,229	390,146,431
1,461,213,517	1,580,600,002	198,382,133	387,748,906	2,558,637,930	1,715,023,939
54,097,915	44,834,478	93,946,178	209,633,822	133,937,455	91,365,893
210,019,494	365,323,830	426,678,213	700,406,089	316,141,814	200,806,651
11,233,368,513	9,161,390,562	39,418,740,307	29,447,397,293	40,092,520,077	32,632,253,452
14,408,047,296	21,347,550,447				
305,833	1,014,884	2,327,006	2,047,760	7,404,178	183,914
1,403,405	143,250				
152,876		12,593,001	6,493,830		46,063
30,676,363,401	9,558,234,809	82,564,456,353	69,002,144,688	37,741,947,673	30,643,958,432
490,000		2,531,475	2,890,105	1,426,294	
		2,724,033	2,545,921		
10,480,756,932	8,989,000,187	19,991,391,728	26,984,041,341	18,435,651,318	7,503,894,102
78,637,391	74,501,617	90,007,376	127,608,517	93,736,182	50,274,052
	120,400			1,250,341	
	1,282,836				
3,975,566	59,352,214	22,166,356	89,202,843	16,778,484	19,761,435
	599,548				
10,862,811,360					
3,902,107	598,266			3,655,182	47,362,331
80,332,159,505	51,948,282,282	143,257,449,976	127,633,827,554	99,716,072,157	73,295,076,695

Column10	Real Last vs.
2008	Renc. Now
240,088,927	76.71
1,053,686,754	797.3
126,722,964	157.97
337,326,873	123.58
17,305,764,461	90.53
	99.36
1,475,713	263.72
12,317,923,098	71.83
	67.96
12,033,417,962	87.03
507,314,093	157.51
4,222,870	
7,368,025	
11,991,719	24.1
305,322	
43,947,608,779	107.32