

LAMPIRAN

Program pada Visual Basic



MENU Utama

Object	Name	Caption
Form	FrmMENU	MENU
cmdButton	cmdLihat	Lihat Data
	cmdPeriksa	Cari dan Periksa Kata

```
Private Sub cmdLihat_Click()
```

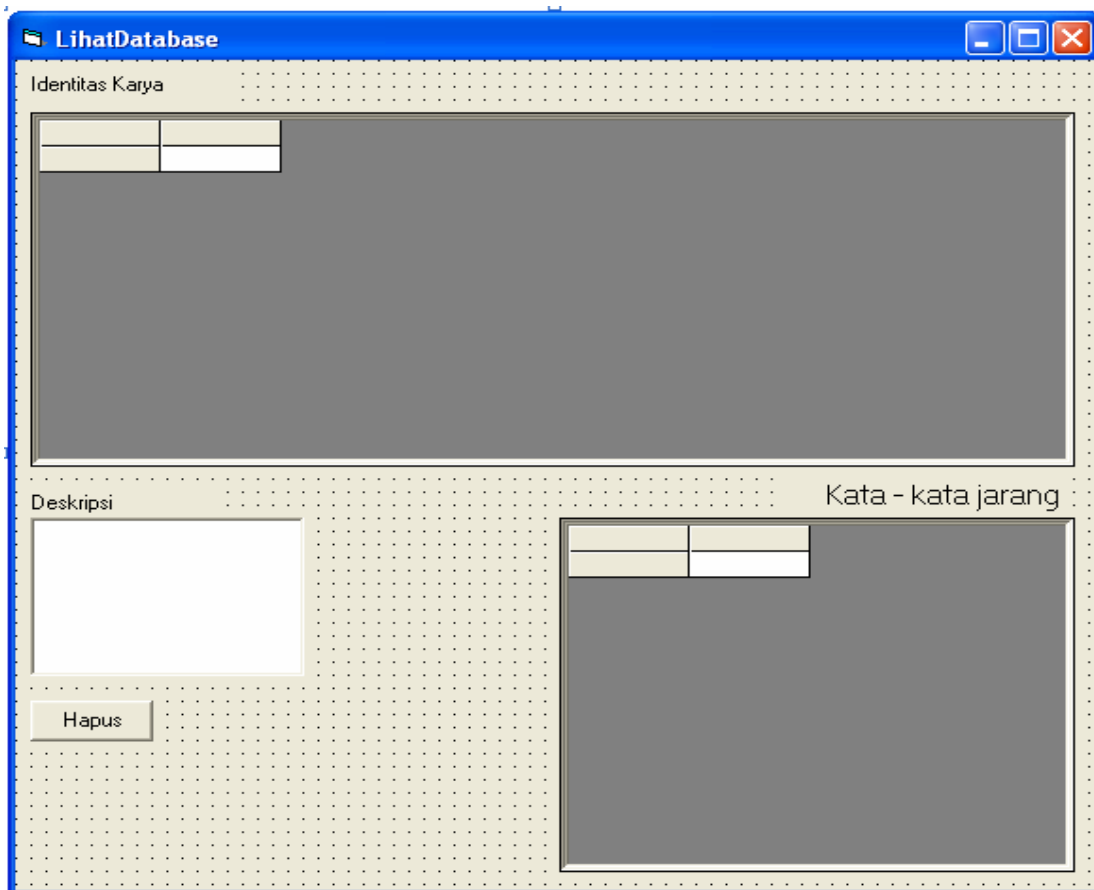
```
    frmLihatDatabase.Show
```

```
End Sub
```

```
Private Sub cmdPeriksa_Click()
```

```
    frmPeriksa.Show
```

```
End Sub
```



Lihat Database

Object	Name	Caption
Form	FrmLihatDatabase	LihatDatabase
MSFlexGrid	MsFlexgrid1	
	Msflexgrid2	
Label	Label1	Identitas Karya
	Label2	Deskripsi
	Label3	Kata-kata Jarang
CommandButton	cmdHapus	Hapus
Textbox	Text1	

Private Sub Form_Load()

```
Dim koneksi As New ADODB.Connection
Dim tabel As New ADODB.Recordset
MSFlexGrid1.Clear
MSFlexGrid1.Cols = 5
MSFlexGrid1.ColWidth(0) = 0
MSFlexGrid1.ColWidth(1) = 700
MSFlexGrid1.ColWidth(2) = 4500
MSFlexGrid1.ColWidth(3) = 1500
MSFlexGrid1.ColWidth(4) = 700
MSFlexGrid1.TextMatrix(0, 1) = " ID "
MSFlexGrid1.TextMatrix(0, 2) = " Judul "
MSFlexGrid1.TextMatrix(0, 3) = " Pengarang "
MSFlexGrid1.TextMatrix(0, 4) = " Tahun "
MSFlexGrid1.Rows = 2
MSFlexGrid2.Clear
MSFlexGrid2.Rows = 2
Text1.Text = ""
koneksi.Open "Sramli"
tabel.Open "SELECT * FROM IdentitasKarya", koneksi, adOpenDynamic,
adLockReadOnly
tabel.MoveFirst
While Not tabel.EOF
MSFlexGrid1.TextMatrix(MSFlexGrid1.Rows - 1, 1) = tabel!ID_Karya
MSFlexGrid1.TextMatrix(MSFlexGrid1.Rows - 1, 2) = tabel!judul
MSFlexGrid1.TextMatrix(MSFlexGrid1.Rows - 1, 3) = tabel!Pengarang
MSFlexGrid1.TextMatrix(MSFlexGrid1.Rows - 1, 4) = tabel!tahun
MSFlexGrid1.Rows = MSFlexGrid1.Rows + 1
tabel.MoveNext
```

```

Wend
tabel.Close
koneksi.Close
End Sub

Private Sub MSFlexGrid1_Click()
    Dim koneksi As New ADODB.Connection
    Dim tabel As New ADODB.Recordset
    MSFlexGrid2.Clear
    MSFlexGrid2.Rows = 2
    MSFlexGrid2.Cols = 3
    MSFlexGrid2.ColWidth(0) = 0
    MSFlexGrid2.ColWidth(1) = 2000
    MSFlexGrid2.ColWidth(2) = 700
    MSFlexGrid2.TextMatrix(0, 1) = "Kata"
    MSFlexGrid2.TextMatrix(0, 2) = "Jumlah"
    koneksi.Open "Sramli"
    tabel.Open "SELECT * FROM IsiKarya WHERE ID_Karya = " &
MSFlexGrid1.Object & " ", koneksi, adOpenDynamic, adLockReadOnly
    tabel.MoveFirst
    While Not tabel.EOF
        MSFlexGrid2.TextMatrix(MSFlexGrid2.Rows - 1, 1) = tabel!Kata
        MSFlexGrid2.TextMatrix(MSFlexGrid2.Rows - 1, 2) = tabel!jumlah
        MSFlexGrid2.Rows = MSFlexGrid2.Rows + 1
        tabel.MoveNext
    Wend
    tabel.Close

```

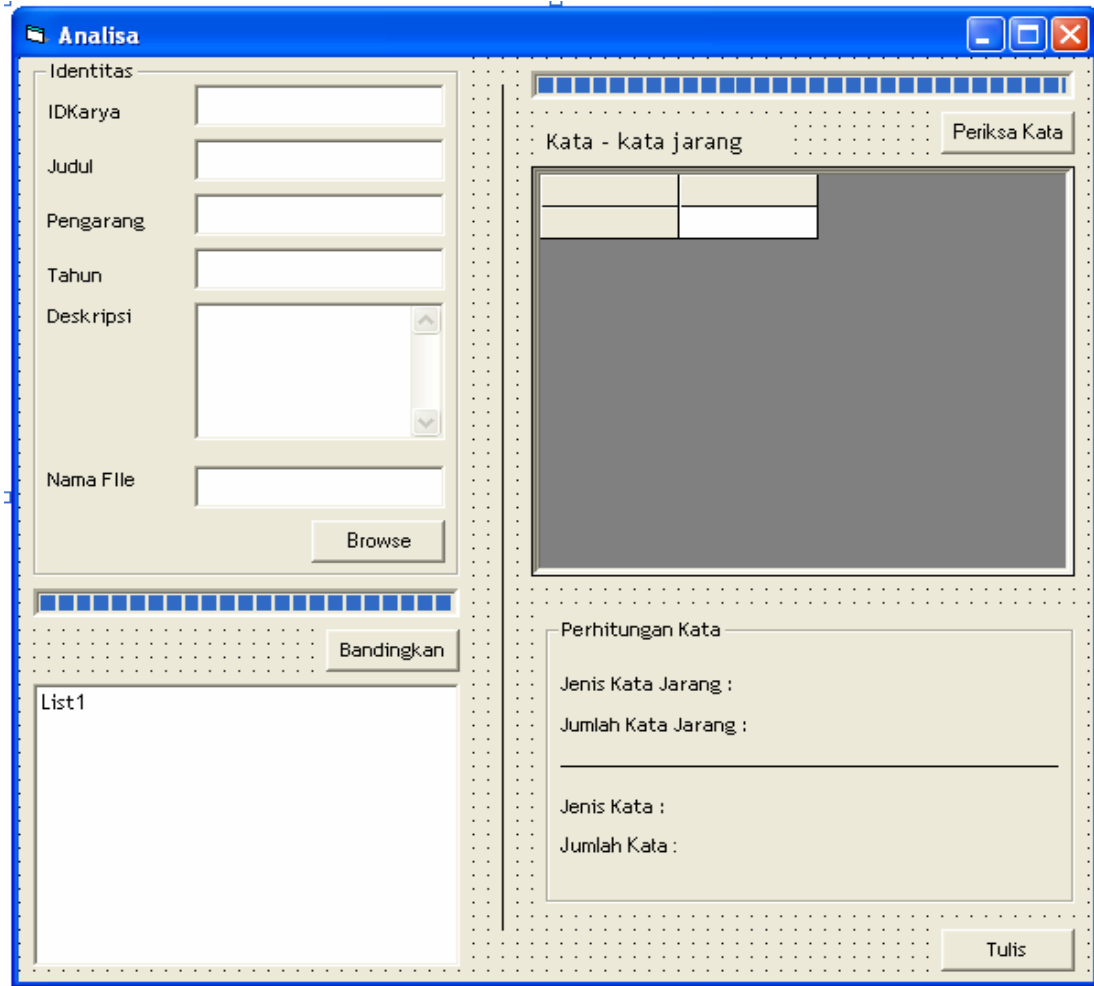
```
tabel.Open "SELECT * FROM IdentitasKarya WHERE ID_Karya = " &  
MSFlexGrid1.Object & " ", koneksi, adOpenDynamic, adLockReadOnly  
Text1.Text = tabel!deskripsi  
tabel.Close
```

End Sub

Private Sub cmdHapus_Click()

```
Dim koneksi As New ADODB.Connection  
Dim tabel As New ADODB.Recordset  
koneksi.Open "Sramli"  
tabel.Open "Select * FROM Identitaskarya WHERE ID_Karya = " &  
MSFlexGrid1.Object & " ", koneksi, adOpenDynamic, adLockOptimistic  
tabel.Delete  
tabel.Close  
MSFlexGrid1.Clear  
MSFlexGrid1.Cols = 5  
MSFlexGrid1.ColWidth(0) = 0  
MSFlexGrid1.ColWidth(1) = 700  
MSFlexGrid1.ColWidth(2) = 4500  
MSFlexGrid1.ColWidth(3) = 1500  
MSFlexGrid1.ColWidth(4) = 700  
MSFlexGrid1.TextMatrix(0, 1) = " ID "  
MSFlexGrid1.TextMatrix(0, 2) = " Judul "  
MSFlexGrid1.TextMatrix(0, 3) = " Pengarang "  
MSFlexGrid1.TextMatrix(0, 4) = " Tahun "  
MSFlexGrid1.Rows = 2  
MSFlexGrid2.Clear  
MSFlexGrid2.Rows = 2
```

```
Text1.Text = ""
tabel.Open "SELECT * FROM IdentitasKarya", koneksi, adOpenDynamic,
adLockReadOnly
tabel.MoveFirst
While Not tabel.EOF
    MSFlexGrid1.TextMatrix(MSFlexGrid1.Rows - 1, 1) = tabel!ID_Karya
    MSFlexGrid1.TextMatrix(MSFlexGrid1.Rows - 1, 2) = tabel!judul
    MSFlexGrid1.TextMatrix(MSFlexGrid1.Rows - 1, 3) = tabel!Pengarang
    MSFlexGrid1.TextMatrix(MSFlexGrid1.Rows - 1, 4) = tabel!tahun
    MSFlexGrid1.Rows = MSFlexGrid1.Rows + 1
    tabel.MoveNext
Wend
tabel.Close
koneksi.Close
End Sub
```



Periksa

Object	Name	Caption
Form	frmPeriksa	Analisa
Frame	Frame1	Perhitungan Kata
	Frame2	Identitas
TextBox	txtIDKarya	
	txtJudul	
	txtPengarang	
	txtTahun	
	txtNamaFile	
	txtDesc	
Label	label 1	Jenis Kata :
	label 2	Jumlah Kata :
	label 3	Pengarang

	label 4	Tahun
	label 5	Deskripsi
	label 6	Nama File
	label 7	Judul
	label 8	IDKarya
	label 9	Kata-Kata Jarang
	label 10	Jumlah Kata Jarang :
	label 11	Jenis Kata Jarang :
	label 12	
	label 13	
CommandButton	cmdBanding	Bandingkan
	cmdBrowse	Browse
	cmdPeriksa	Periksa Kata
	cmdTulis	Tulis
MSFlexgrid	MSFlexGrid1	
	MSFlexGrid2	
	MSFlexGrid3	
ProgressBar	ProgressBar1	
	ProgressBar2	
RichTextBox	RichTextBox1	
	RichTextBox2	

Dim z As Integer

Private Sub Form_Load()

```

MSFlexGrid1.Rows = 2
MSFlexGrid1.Cols = 4
MSFlexGrid1.ColWidth(0) = 0
MSFlexGrid1.ColWidth(1) = 1800
MSFlexGrid1.ColWidth(2) = 700
MSFlexGrid1.ColWidth(3) = 1000
MSFlexGrid1.Clear
MSFlexGrid1.TextMatrix(0, 1) = "Kata"
MSFlexGrid1.TextMatrix(0, 2) = "Jumlah"
MSFlexGrid2.Rows = 2
MSFlexGrid2.Cols = 3

```



```
MSFlexGrid2.ColWidth(0) = 0
MSFlexGrid2.ColWidth(1) = 1800
MSFlexGrid2.ColWidth(2) = 700
MSFlexGrid2.Clear
MSFlexGrid2.TextMatrix(0, 1) = "Kata"
MSFlexGrid2.TextMatrix(0, 2) = "Jumlah"
```

End Sub

Private Sub cmdBanding_Click()

```
Dim koneksi As New ADODB.Connection
Dim tabel As New ADODB.Recordset
Dim hitung, jumlahperiksa As Long
Dim jumlahkata, tjumlahkata, TotalKata, i As Integer
Dim tanda As Boolean
Dim kode As String
Dim nama, tahun, judul, persen1, persen2 As String
Dim tnama, ttahun, tjudul, tpersen1, tpersen2 As String
List1.Clear
hitung = 0
jumlahperiksa = 0
ProgressBar2.Value = 0
With MSFlexGrid3
    .Cols = 7
    .Rows = 2
    .Clear
End With
If MSFlexGrid2.Rows = 2 Then Exit Sub
koneksi.Open "SRamli"
```

```
tabel.Open "SELECT IdentitasKarya.ID_Karya, JmlJarang, IdentitasKarya.Judul, " &
```

```
-
```

```
    "IdentitasKarya.Pengarang, IdentitasKarya.Tahun, " & _  
    "IdentitasKarya.Deskripsi, IsiKarya.Kata, IsiKarya.Jumlah " & _  
    "FROM IdentitasKarya INNER JOIN IsiKarya ON " & _  
    "IdentitasKarya.ID_Karya = IsiKarya.ID_Karya;", _  
koneksi, adOpenDynamic, adLockReadOnly
```

```
tabel.MoveFirst
```

```
While Not tabel.EOF
```

```
    hitung = hitung + 1
```

```
    tabel.MoveNext
```

```
Wend
```

```
tabel.MoveFirst
```

```
kode = tabel!ID_Karya
```

```
nama = tabel!Pengarang
```

```
tahun = tabel!tahun
```

```
judul = tabel!judul
```

```
TotalKata = tabel!jmlJarang
```

```
tanda = False
```

```
jumlahkata = 0
```

```
While Not tabel.EOF
```

```
    If tabel!ID_Karya = kode Then
```

```
        For i = 1 To MSFlexGrid2.Rows - 2
```

```
            If UCase(MSFlexGrid2.TextMatrix(i, 1)) = UCase(tabel!Kata) Then
```

```
                tanda = True
```

```
                jumlahkata = jumlahkata + CInt(MSFlexGrid2.TextMatrix(i, 2))
```

```
            End If
```

```
        Next
```

```

tabel.MoveNext
jumlahperiksa = jumlahperiksa + 1
ProgressBar2.Value = jumlahperiksa / hitung * 100
Else
If tanda = True Then
    With MSFlexGrid3
        i = .Rows - 1
        persen1 = Round(jumlahkata / TotalKata * 100, 2)
        persen2 = Round(jumlahkata / CInt(Label12.Caption) * 100, 2)
        .TextMatrix(i, 1) = judul
        .TextMatrix(i, 2) = nama
        .TextMatrix(i, 3) = tahun
        .TextMatrix(i, 4) = jumlahkata
        .TextMatrix(i, 5) = persen1
        .TextMatrix(i, 6) = persen2
    If i > 1 Then
        If jumlahkata <= CInt(.TextMatrix(i - 1, 4)) Then
            Else
                For j = 1 To .Rows - 1
                    If jumlahkata > CInt(.TextMatrix(j, 4)) And j <> .Rows - 1 Then
                        tjudul = .TextMatrix(j, 1)
                        tnama = .TextMatrix(j, 2)
                        ttahun = .TextMatrix(j, 3)
                        tjumlahkata = .TextMatrix(j, 4)
                        tpersen1 = .TextMatrix(j, 5)
                        tpersen2 = .TextMatrix(j, 6)
                        .TextMatrix(j, 1) = judul
                        .TextMatrix(j, 2) = nama
                        .TextMatrix(j, 3) = tahun

```

```

        .TextMatrix(j, 4) = jumlahkata
        .TextMatrix(j, 5) = persen1
        .TextMatrix(j, 6) = persen2
        judul = tjudul
        nama = tnama
        tahun = ttahun
        jumlahkata = tjumlahkata
        persen1 = tpersen1
        persen2 = tpersen2
    ElseIf .Rows - 1 = j Then
        .TextMatrix(j, 1) = judul
        .TextMatrix(j, 2) = nama
        .TextMatrix(j, 3) = tahun
        .TextMatrix(j, 4) = jumlahkata
        .TextMatrix(j, 5) = persen1
        .TextMatrix(j, 6) = persen2
    End If
Next
End If
End If
.Rows = .Rows + 1
End With
End If
tanda = False
jumlahkata = 0
kode = tabel!ID_Karya
nama = tabel!Pengarang
tahun = tabel!tahun
judul = tabel!judul

```

```

        TotalKata = tabel!jmlJarang
    End If
Wend
If tabel.EOF = True Then
    If tanda = True Then
        With MSFlexGrid3
            persen1 = Round(jumlahkata / TotalKata * 100, 2)
            persen2 = Round(jumlahkata / CInt(Label12.Caption) * 100, 2)
            .TextMatrix(.Rows - 1, 1) = judul
            .TextMatrix(.Rows - 1, 2) = nama
            .TextMatrix(.Rows - 1, 3) = tahun
            .TextMatrix(.Rows - 1, 4) = jumlahkata
            .TextMatrix(.Rows - 1, 5) = persen1
            .TextMatrix(.Rows - 1, 6) = persen2
        For j = 1 To .Rows - 1
            If jumlahkata > CInt(.TextMatrix(j, 4)) And j <> .Rows - 1 Then
                tjudul = .TextMatrix(j, 1)
                tnama = .TextMatrix(j, 2)
                ttahun = .TextMatrix(j, 3)
                tjumlahkata = .TextMatrix(j, 4)
                tpersen1 = .TextMatrix(j, 5)
                tpersen2 = .TextMatrix(j, 6)
                .TextMatrix(j, 1) = judul
                .TextMatrix(j, 2) = nama
                .TextMatrix(j, 3) = tahun
                .TextMatrix(j, 4) = jumlahkata
                .TextMatrix(j, 5) = persen1
                .TextMatrix(j, 6) = persen2
            End If
        Next j
    End If
End If

```

```

        judul = tjudul
        nama = tnama
        tahun = ttahun
        jumlahkata = tjumlahkata
        persen1 = tpersen1
        persen2 = tpersen2
    ElseIf .Rows - 1 = j Then
        .TextMatrix(j, 1) = judul
        .TextMatrix(j, 2) = nama
        .TextMatrix(j, 3) = tahun
        .TextMatrix(j, 4) = jumlahkata
        .TextMatrix(j, 5) = persen1
        .TextMatrix(j, 6) = persen2
    End If
Next
.Rows = .Rows + 1
End With
End If
End If
tabel.Close
koneksi.Close
With MSFlexGrid3
    For i = 1 To .Rows - 2
        List1.AddItem "-----"
        List1.AddItem "Judul : " & .TextMatrix(i, 1)
        List1.AddItem " (" & .TextMatrix(i, 5) & " % / " & .TextMatrix(i, 6) & " %"
"
        List1.AddItem "Pengarang : " & .TextMatrix(i, 2)
        List1.AddItem "Tahun : " & .TextMatrix(i, 3)

```

```
List1.AddItem "Jumlah kata sama : " & .TextMatrix(i, 4)
List1.AddItem "-----"
List1.AddItem " "
```

```
Next
```

```
End With
```

End Sub

Private Sub cmdPeriksa_Click()

```
Dim theT As Variant
```

```
Dim temp As String
```

```
Dim newTemp As String
```

```
newTemp = " " & RichTextBox1.Text
```

```
newTemp = Replace(newTemp, Chr(13) & Chr(10), " ", , , vbTextCompare)
```

```
newTemp = Replace(newTemp, Chr(9), " ", , , vbTextCompare)
```

```
newTemp = Replace(newTemp, Chr(34), " ", , , vbTextCompare)
```

```
newTemp = Replace(newTemp, Chr(133), " ", , , vbTextCompare)
```

```
newTemp = Replace(newTemp, Chr(183), " ", , , vbTextCompare)
```

```
newTemp = removeDelimiters(newTemp, "[", "]", ",", ":", ";", "<", ">", "-", "=",
"+", ".", "~", " ", "?", "!", "*", "(", ")"/, "\", "1", "2", "3", "4", "5", "6", "7", "8",
"9", "0")
```

```
temp = removeSpaces(newTemp)
```

```
RichTextBox1.Text = temp
```

```
MSFlexGrid1.Clear
```

```
MSFlexGrid1.Rows = 2
```

```
MSFlexGrid1.TextMatrix(0, 1) = "Kata"
```

```
MSFlexGrid1.TextMatrix(0, 2) = "Jumlah"
```

```

MSFlexGrid2.Clear
MSFlexGrid2.Rows = 2
MSFlexGrid2.TextMatrix(0, 1) = "Kata"
MSFlexGrid2.TextMatrix(0, 2) = "Jumlah"
theT = Split(RichTextBox1.Text, " ")
z = 0
ProgressBar1.Value = 0
Dim R As Integer
If RichTextBox1.Text = "" Then Exit Sub
If UBound(theT) <> 0 And UBound(theT) <= 4500 Then
    R = RichTextBox1.Find(theT(z), 0, , rtfWholeWord)

    While R <> -1
        If z <= UBound(theT) Then
            ProgressBar1.Value = z / UBound(theT) * 100
            SearchWord (theT)
            z = z + 1
            theT = Split(RichTextBox1.Text, " ")
            If z <= UBound(theT) Then R = RichTextBox1.Find(theT(z), 0, ,
rtfWholeWord)
        Else
            R = -1
        End If
    Wend
    If z >= UBound(theT) Then
        RichTextBox1.SelStart = 0
        RichTextBox1.SelLength = Len(RichTextBox1.Text)
        RichTextBox1.SelColor = vbBlack
    End If

```


MsgBox ("Selesai, dan tidak ada kesalahan")

'-----

Dim Total As Integer

Total = 0

With MSFlexGrid1

MSFlexGrid2.Clear

MSFlexGrid2.Rows = 2

MSFlexGrid2.Cols = 3

MSFlexGrid2.TextMatrix(0, 1) = "Kata"

MSFlexGrid2.TextMatrix(0, 2) = "Jumlah"

For i = 1 To .Rows - 2

Total = Total + CInt(.TextMatrix(i, 2))

Next

Label1.Caption = "Jumlah Kata : " & Total

Label2.Caption = "Total jenis Kata : " & MSFlexGrid1.Rows - 2

For i = 1 To .Rows - 2

If .TextMatrix(i, 2) <= 2 Then

MSFlexGrid2.TextMatrix(MSFlexGrid2.Rows - 1, 1) = .TextMatrix(i, 1)

MSFlexGrid2.TextMatrix(MSFlexGrid2.Rows - 1, 2) = .TextMatrix(i, 2)

MSFlexGrid2.Rows = MSFlexGrid2.Rows + 1

End If

Next

End With

With MSFlexGrid2

Total = 0

```

    For i = 1 To .Rows - 2
        Total = Total + CInt(.TextMatrix(i, 2))
    Next
    Label12.Caption = .Rows - 2
    Label13.Caption = Total
End With
'-----
End If
ElseIf UBound(theT) > 4500 Then
    MsgBox "Maaf, maksimal pembacaan 20 halaman"
End If
End Sub
Private Sub cmdBrowse_Click()
    Dim OpenWord As word.Application
    CommonDialog1.Filter = ""
    CommonDialog1.Filter = "Word Files |*.doc"
    CommonDialog1.ShowOpen
    txtNamaFile = CommonDialog1.FileName
    If CommonDialog1.FileName <> "" Then
        Set OpenWord = New word.Application
        OpenWord.Visible = False
        OpenWord.Documents.Open (CommonDialog1.FileName)
        Clipboard.Clear
        OpenWord.ActiveDocument.Select
        OpenWord.Selection.Copy
        RichTextBox1.Text = Clipboard.GetText
        Clipboard.Clear
        OpenWord.Documents.Close
        OpenWord.Quit
    End If
End Sub

```

```

    Set OpenWord = Nothing
End If
MSFlexGrid1.Clear
MSFlexGrid1.TextMatrix(0, 1) = "Kata"
MSFlexGrid1.TextMatrix(0, 2) = "Jumlah"
MSFlexGrid1.Rows = 1
MSFlexGrid2.Clear
MSFlexGrid2.TextMatrix(0, 1) = "Kata"
MSFlexGrid2.TextMatrix(0, 2) = "Jumlah"
MSFlexGrid2.Rows = 2
MSFlexGrid3.Clear
MSFlexGrid3.Rows = 2
List1.Clear
ProgressBar1.Value = 0
ProgressBar2.Value = 0
Label12.Caption = ""
Label13.Caption = ""
Label1.Caption = "Jumlah Kata : "
Label2.Caption = "Jenis Kata : "

```

End Sub

Private Sub cmdTulis_Click()

```

    Dim koneksi As New ADODB.Connection
    Dim tabel As New ADODB.Recordset
    Dim i As Integer
    If MSFlexGrid2.Rows = 2 Then Exit Sub

    If txtIDKarya <> "" And txtJudul <> "" And txtPengarang <> "" And txtTahun <>
    "" Then
        koneksi.Open "SRamli"

```

```

    tabel.Open "SELECT count(ID_Karya) as jumlah FROM IdentitasKarya
WHERE ID_Karya = " & txtIDKarya & " ", koneksi, , 3
    If tabel!jumlah > 0 Then
        MsgBox "ID sudah ada, tolong diubah"
        Exit Sub
    End If
    tabel.Close
    tabel.Open "SELECT * FROM IdentitasKarya ", koneksi, , 3
    tabel.AddNew
    tabel!ID_Karya = txtIDKarya
    tabel!judul = txtJudul.Text
    tabel!Pengarang = txtPengarang.Text
    tabel!tahun = txtTahun.Text
    tabel!deskripsi = txtDesc.Text
    tabel!jmlJarang = CInt(Label12.Caption)
    tabel.Update
    tabel.Close
    tabel.Open "SELECT * FROM IsiKarya", koneksi, , 3
    For i = 1 To MSFlexGrid1.Rows - 2
        If MSFlexGrid1.TextMatrix(i, 2) <= 2 Then
            tabel.AddNew
            tabel!ID_Karya = txtIDKarya
            tabel!Kata = MSFlexGrid1.TextMatrix(i, 1)
            tabel!jumlah = MSFlexGrid1.TextMatrix(i, 2)

            tabel.Update
        End If
    Next
    tabel.Close

```

```
koneksi.Close
MsgBox "Selesai"
Else
    MsgBox "Maaf data anda kurang lengkap"
End If
```

End Sub

Function removeDelimiters(theText As String, ParamArray delim()) As String

```
Dim temp As String
Dim del As Variant
temp = theText
For Each del In delim
    temp = Replace(temp, del, " ")
Next del
removeDelimiters = temp
```

End Function

Function removeSpaces(theText As String) As String

```
Dim temp
Dim flg As Integer
flg = 0
temp = theText
Do Until InStr(temp, " ") = 0
    flg = flg + 1
    If flg >= 250 Then End
    temp = Replace(temp, " ", " ")
Loop
temp = LTrim(temp)
removeSpaces = temp
```

End Function

Function SearchWord(word As Variant)

```
Dim same As Boolean
Dim i, y As Integer
same = False
With MSFlexGrid1
  For i = 1 To .Rows - 1
    If UCase(.TextMatrix(i, 1)) = UCase(word(z)) Then
      If word(z) <> "" Then
        same = True
        y = i
      End If
    End If
  Next
  If same = True Then
    .TextMatrix(y, 2) = CInt(.TextMatrix(y, 2)) + 1
  ElseIf same = False And word(z) <> "" Then
    .TextMatrix(.Rows - 1, 1) = word(z)
    .TextMatrix(.Rows - 1, 2) = "1"
    .Rows = .Rows + 1
  End If
End With
```

End Function