

LAMPIRAN

Lampiran 1
Biaya Reparasi & Pemeliharaan Mesin
Pembukaan Cabang Baru di Solo
Tahun 1

SUMMARY OUTPUT

<i>Regression Statistics</i>	
Multiple R	0.38421494
R Square	0.14762112
Adjusted R Square	0.062383233
Standard Error	755567.7909
Observations	12

ANOVA

	<i>df</i>	<i>SS</i>	<i>MS</i>	<i>F</i>	<i>Significance F</i>
Regression	1	9.88696E+11	9.88696E+11	1.731872105	0.217540054
Residual	10	5.70883E+12	5.70883E+11		
Total	11	6.69752E+12			

	<i>Coefficients</i>	<i>Standard Error</i>	<i>t Stat</i>	<i>P-value</i>	<i>Lower 95%</i>	<i>Upper 95%</i>	<i>Lower 95.0%</i>	<i>Upper 95.0%</i>
Intercept	31085.38448	1261831.096	0.024635139	0.980830655	-2780449.494	2842620.263	-2780449.494	2842620.263
X Variable 1	0.010903875	0.008285581	1.316006119	0.217540054	-0.00755755	0.0293653	-0.00755755	0.0293653

Lampiran 2
Biaya Reparasi & Pemeliharaan Mesin
Pembukaan Cabang Baru di Solo
Tahun 2

**SUMMARY
OUTPUT**

Multiple R	0.38421494
R Square	0.14762112
Adjusted R Square	0.062383233
Standard Error	831124.57
Observations	12

ANOVA

	<i>df</i>	<i>SS</i>	<i>MS</i>	<i>F</i>	<i>Significance F</i>
Regression	1	1.19632E+12	1.19632E+12	1.731872105	0.217540054
Residual	10	6.90768E+12	6.90768E+11		
Total	11	8.104E+12			

	<i>Coefficients</i>	<i>Standard Error</i>	<i>t Stat</i>	<i>P-value</i>	<i>Lower 95%</i>	<i>Upper 95%</i>	<i>Lower 95.0%</i>	<i>Upper 95.0%</i>
Intercept	34193.92293	1388014.206	0.024635139	0.980830655	-3058494.443	3126882.289	-3058494.443	3126882.289
X Variable 1	0.010583173	0.008041887	1.316006119	0.217540054	-0.007335269	0.028501615	-0.007335269	0.028501615

Lampiran 3
Biaya Reparasi & Pemeliharaan Mesin
Pembukaan Cabang Baru di Solo
Tahun 3

**SUMMARY
OUTPUT**

<i>Regression Statistics</i>	
Multiple R	0.38421494
R Square	0.14762112
Adjusted R Square	0.062383233
Standard Error	906681.3491
Observations	12

ANOVA

	<i>df</i>	<i>SS</i>	<i>MS</i>	<i>F</i>	<i>Significance F</i>
Regression	1	1.42372E+12	1.42372E+12	1.731872105	0.217540054
Residual	10	8.22071E+12	8.22071E+11		
Total	11	9.64443E+12			

	<i>Coefficients</i>	<i>Standard Error</i>	<i>t Stat</i>	<i>P-value</i>	<i>Lower 95%</i>	<i>Upper 95%</i>	<i>Lower 95.0%</i>	<i>Upper 95.0%</i>
Intercept	37302.46138	1514197.316	0.024635139	0.980830655	-3336539.392	3411144.315	-3336539.392	3411144.315
X Variable 1	0.010329987	0.007849498	1.316006119	0.217540054	-0.007159784	0.027819758	-0.007159784	0.027819758

Lampiran 4
Biaya Reparasi & Pemeliharaan Mesin
Pembukaan Cabang Baru di Solo
Tahun 4

**SUMMARY
OUTPUT**

<i>Regression Statistics</i>	
Multiple R	0.38421494
R Square	0.14762112
Adjusted R Square	0.062383233
Standard Error	982238.1282
Observations	12

ANOVA

	<i>df</i>	<i>SS</i>	<i>MS</i>	<i>F</i>	<i>Significance F</i>
Regression	1	1.6709E+12	1.6709E+12	1.731872105	0.217540054
Residual	10	9.64792E+12	9.64792E+11		
Total	11	1.13188E+13			

	<i>Coefficients</i>	<i>Standard Error</i>	<i>t Stat</i>	<i>P-value</i>	<i>Lower 95%</i>	<i>Upper 95%</i>	<i>Lower 95.0%</i>	<i>Upper 95.0%</i>
Intercept	40410.99982	1640380.425	0.024635139	0.980830655	-3614584.342	3695406.342	-3614584.342	3695406.342
X Variable 1	0.010125027	0.007693754	1.316006119	0.217540054	-0.007017725	0.027267779	-0.007017725	0.027267779

Lampiran 5
Biaya Reparasi & Pemeliharaan Mesin
Pembukaan Cabang Baru di Solo
Tahun 5

**SUMMARY
OUTPUT**

<i>Regression Statistics</i>	
Multiple R	0.38421494
R Square	0.14762112
Adjusted R Square	0.062383233
Standard Error	1057794.907
Observations	12

ANOVA

	<i>df</i>	<i>SS</i>	<i>MS</i>	<i>F</i>	<i>Significance F</i>
Regression	1	1.93784E+12	1.93784E+12	1.731872105	0.217540054
Residual	10	1.11893E+13	1.11893E+12		
Total	11	1.31271E+13			

	<i>Coefficients</i>	<i>Standard Error</i>	<i>t Stat</i>	<i>P-value</i>	<i>Lower 95%</i>	<i>Upper 95%</i>	<i>Lower 95.0%</i>	<i>Upper 95.0%</i>
Intercept	43519.53827	1766563.535	0.024635139	0.980830655	-3892629.291	3979668.368	-3892629.291	3979668.368
X Variable 1	0.009955712	0.007565096	1.316006119	0.217540054	-0.006900371	0.026811796	-0.006900371	0.026811796

Lampiran 6
Biaya Pemeliharaan & Perbaikan kendaraan
Pembukaan Representative Office
Tahun 1

SUMMARY OUTPUT

<i>Regression Statistics</i>	
Multiple R	0.38421494
R Square	0.14762112
Adjusted R Square	0.062383233
Standard Error	566675.8432
Observations	12

ANOVA

	<i>df</i>	<i>SS</i>	<i>MS</i>	<i>F</i>	<i>Significance F</i>
Regression	1	5.56141E+11	5.56141E+11	1.731872105	0.217540054
Residual	10	3.21122E+12	3.21122E+11		
Total	11	3.76736E+12			

	<i>Coefficients</i>	<i>Standard Error</i>	<i>t Stat</i>	<i>P-value</i>	<i>Lower 95%</i>	<i>Upper 95%</i>	<i>Lower 95.0%</i>	<i>Upper 95.0%</i>
Intercept	23314.03836	946373.3222	0.024635139	0.980830655	-2085337.12	2131965.197	-2085337.12	2131965.197
X Variable 1	0.024533719	0.018642557	1.316006119	0.217540054	-0.017004486	0.066071925	-0.017004486	0.066071925

Lampiran 7
Biaya Pemeliharaan & Perbaikan kendaraan
Pembukaan Representative Office
Tahun 2

SUMMARY OUTPUT

<i>Regression Statistics</i>	
Multiple R	0.38421494
R Square	0.14762112
Adjusted R Square	0.062383233
Standard Error	585565.0379
Observations	12

ANOVA

	<i>df</i>	<i>SS</i>	<i>MS</i>	<i>F</i>	<i>Significance F</i>
Regression	1	5.93835E+11	5.93835E+11	1.731872105	0.217540054
Residual	10	3.42886E+12	3.42886E+11		
Total	11	4.0227E+12			

	<i>Coefficients</i>	<i>Standard Error</i>	<i>t Stat</i>	<i>P-value</i>	<i>Lower 95%</i>	<i>Upper 95%</i>	<i>Lower 95.0%</i>	<i>Upper 95.0%</i>
Intercept	24091.17297	977919.0996	0.024635139	0.980830655	-2154848.358	2203030.704	-2154848.358	2203030.704
X Variable 1	0.021126258	0.016053313	1.316006119	0.217540054	-0.014642752	0.056895269	-0.014642752	0.056895269

Lampiran 8
Biaya Pemeliharaan & Perbaikan kendaraan
Pembukaan Representative Office
Tahun 3

SUMMARY OUTPUT

<i>Regression Statistics</i>	
Multiple R	0.38421494
R Square	0.14762112
Adjusted R Square	0.062383233
Standard Error	604454.2327
Observations	12

ANOVA

	<i>df</i>	<i>SS</i>	<i>MS</i>	<i>F</i>	<i>Significance F</i>
Regression	1	6.32765E+11	6.32765E+11	1.731872105	0.217540054
Residual	10	3.65365E+12	3.65365E+11		
Total	11	4.28641E+12			

	<i>Coefficients</i>	<i>Standard Error</i>	<i>t Stat</i>	<i>P-value</i>	<i>Lower 95%</i>	<i>Upper 95%</i>	<i>Lower 95.0%</i>	<i>Upper 95.0%</i>
Intercept	24868.30758	1009464.877	0.024635139	0.980830655	-2224359.595	2274096.21	-2224359.595	2274096.21
X Variable 1	0.018692358	0.014203853	1.316006119	0.217540054	-0.012955799	0.050340514	-0.012955799	0.050340514

Lampiran 9
Biaya Pemeliharaan & Perbaikan kendaraan
Pembukaan Representative Office
Tahun 4

SUMMARY OUTPUT

<i>Regression Statistics</i>	
Multiple R	0.38421494
R Square	0.14762112
Adjusted R Square	0.062383233
Standard Error	623343.4275
Observations	12

ANOVA

	<i>df</i>	<i>SS</i>	<i>MS</i>	<i>F</i>	<i>Significance F</i>
Regression	1	6.72931E+11	6.72931E+11	1.731872105	0.217540054
Residual	10	3.88557E+12	3.88557E+11		
Total	11	4.5585E+12			

	<i>Coefficients</i>	<i>Standard Error</i>	<i>t Stat</i>	<i>P-value</i>	<i>Lower 95%</i>	<i>Upper 95%</i>	<i>Lower 95.0%</i>	<i>Upper 95.0%</i>
Intercept	25645.4422	1041010.654	0.024635139	0.980830655	-2293870.832	2345161.717	-2293870.832	2345161.717
X Variable 1	0.016866932	0.012816758	1.316006119	0.217540054	-0.011690584	0.045424448	-0.011690584	0.045424448

Lampiran 10
Biaya Pemeliharaan & Perbaikan kendaraan
Pembukaan Representative Office
Tahun 5

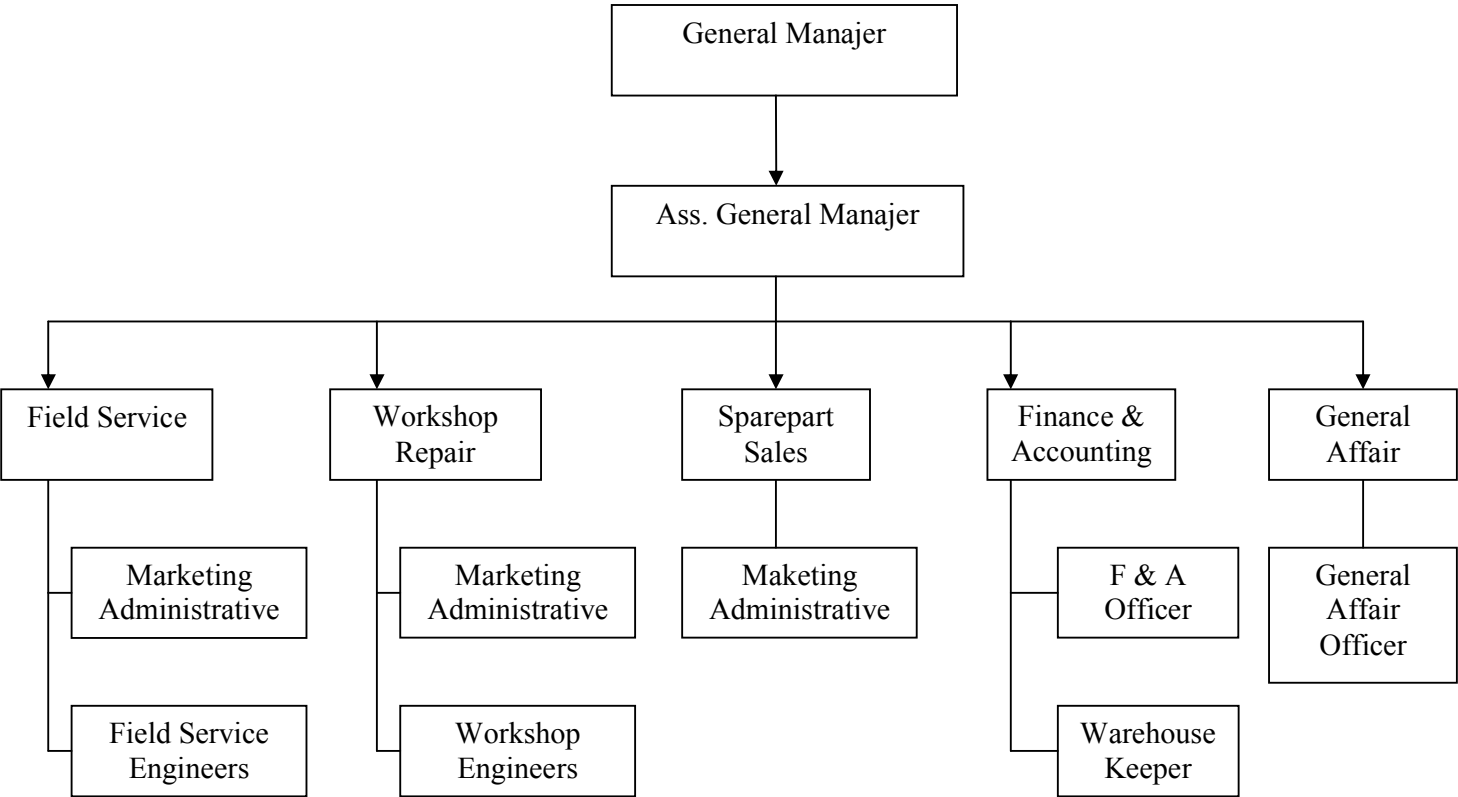
SUMMARY OUTPUT

<i>Regression Statistics</i>	
Multiple R	0.38421494
R Square	0.14762112
Adjusted R Square	0.062383233
Standard Error	642232.6223
Observations	12

ANOVA

	<i>df</i>	<i>SS</i>	<i>MS</i>	<i>F</i>	<i>Significance F</i>
Regression	1	7.14333E+11	7.14333E+11	1.731872105	0.217540054
Residual	10	4.12463E+12	4.12463E+11		
Total	11	4.83896E+12			

	<i>Coefficients</i>	<i>Standard Error</i>	<i>t Stat</i>	<i>P-value</i>	<i>Lower 95%</i>	<i>Upper 95%</i>	<i>Lower 95.0%</i>	<i>Upper 95.0%</i>
Intercept	26422.57681	1072556.432	0.024635139	0.980830655	-2363382.07	2416227.223	-2363382.07	2416227.223
X Variable 1	0.015447157	0.011737906	1.316006119	0.217540054	-0.010706528	0.041600842	-0.010706528	0.041600842



Gambar 3.2
Struktur Organisasi Perusahaan

RIWAYAT HIDUP

Nama : Yohanes Christian Rimon

Tempat / Tanggal Lahir : Bandung / 03 Maret 1986

Alamat : Jl. Babakan Tarogong 183, Bandung.

Agama : Kristen

Pendidikan :

- 1992 – 1998 : SD Negeri Nata Endah I, Bandung.
- 1998 – 2001 : SLTP Negeri 3, Bandung.
- 2001 – 2004 : SMU Negeri 8, Bandung.
- 2004 – 2008 : Universitas Kristen Maranatha.