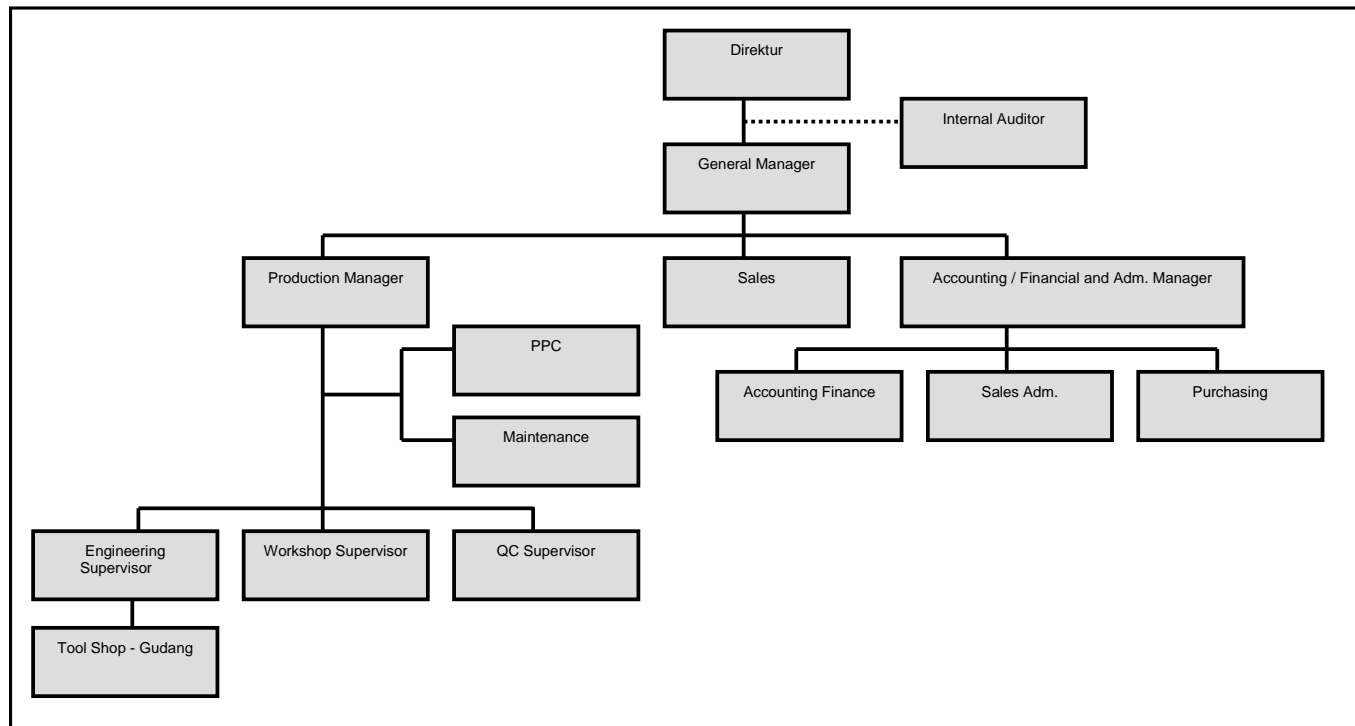


Lampiran 1

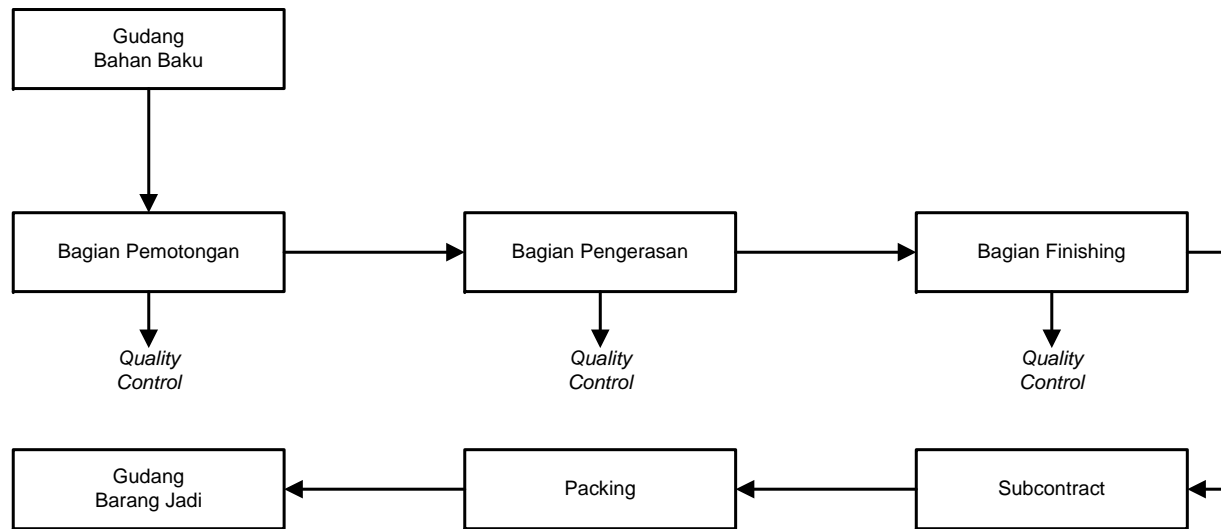
Struktur Organisasi PT “X”



Sumber : PT. “X”

Lampiran 2

Proses Produksi



Sumber : PT. "X"

Lampiran 3

Rangkuman Aplikasi Manajerial Dari Analisis Cost Volume Profit PT “X”

KETERANGAN	KEADAAN SEMULA	LABA DIRENCANAKAN	HARGA JUAL NAIK	BIAYA TETAP DIELIMINASI	BIAYA VARIABEL TURUN
Volume Penjualan	3764 unit	3792,95 unit	3764 unit	3764 unit	3764 unit
Harga Jual/Unit	Rp 964.630,32	Rp 964.630,32	Rp 1.010.000	Rp 964.630,32	Rp 964.630,32
Penjualan (Rp)	Rp 3.630.868.541	Rp 3.658.794.572	Rp 3.801.640.000	Rp 3.630.868.541	Rp 3.630.868.541
Biaya Variabel/Unit	Rp 604.050,53	Rp 604.050,53	Rp 604.050,53	Rp 604.050,53	Rp 568.991
Biaya Variabel	Rp 2.273.646.185	Rp 2.291.133.458	Rp 2.273.646.185	Rp 2.273.646.185	Rp 2.141.682.124
Contribution Margin	Rp 1.357.222.330	Rp 1.367.661.114	Rp 1.527.993.815	Rp 1.357.222.330	Rp 1.489.186.417
Contribution Margin (%)	37,38%	37,38%	40,19%	37,38%	41,01%
Biaya Tetap	Rp 1.247.659.358	Rp 1.247.659.358	Rp 1.247.659.358	Rp 1.237.659.358	Rp 1.247.659.358
Laba	Rp 109.562.998	Rp 120.000.000	Rp 280.334.457	Rp 119.562.998	Rp 241.527.059
BEP (Unit)	3.460,14 unit	3.460,14 unit	3.073,44 unit	3.432,41 unit	3.153,53 unit
BEP (Rp)	Rp 3.337.755.955	Rp 3.337.755.955	Rp 3.104.174.400	Rp 3.311.006.757	Rp 3.041.990.653
Margin of Safety (Rp)	Rp 293.112.586	Rp 321.038.617	Rp 697.465.600	Rp 319.861.784	Rp 588.877.888
Margin of Safety (%)	8,07%	8,77%	18,35%	8,81%	16,21%

Lampiran 4

RIWAYAT HIDUP PENULIS

Nama : Markus Dimas Santosa

Tempat/Tanggal Lahir : Semarang, 17 Maret 1984

Alamat : Suria Sumantri 84A, Bandung

Agama : Kristen

Pendidikan :

1988 – 1990 : TK Santo Yusuf, Semarang

1990 – 1996 : SD Santo Yusuf, Semarang

1996 – 1999 : SLTP Domenico Savio, Semarang

1999 – 2002 : SMU Sedes Sapientiae, Semarang

2003 – 2009 : Fakultas Ekonomi Program Studi Akuntansi

Universitas Kristen Maranatha, Bandung