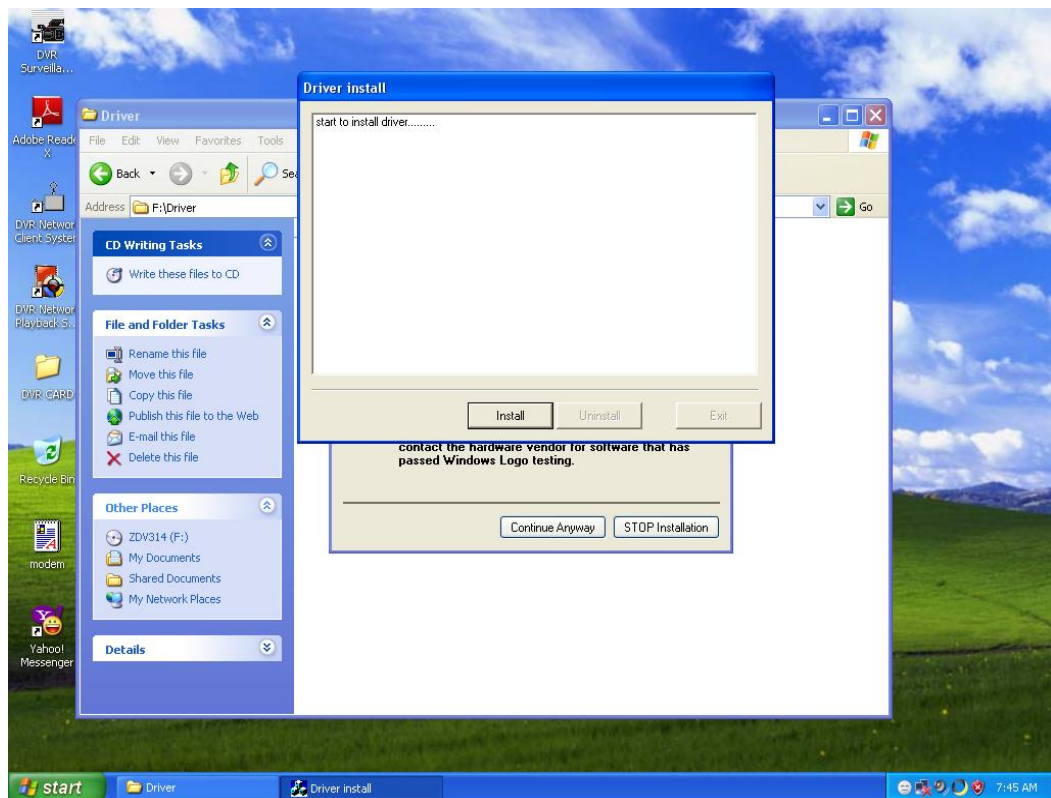
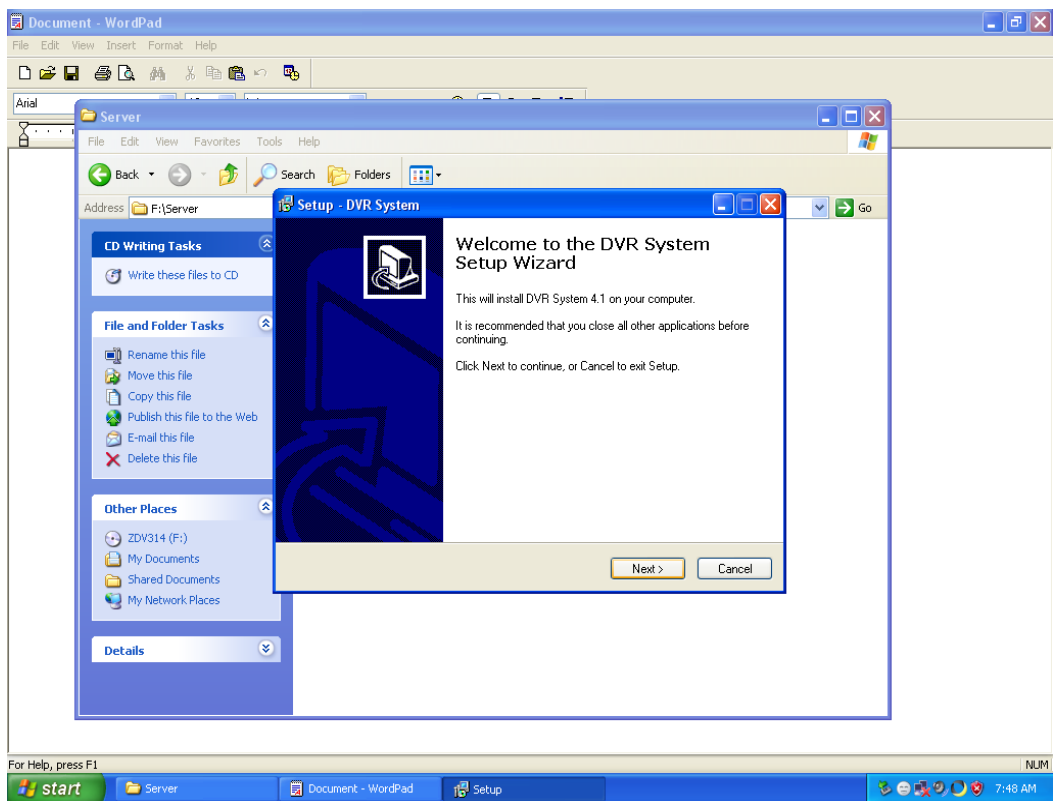
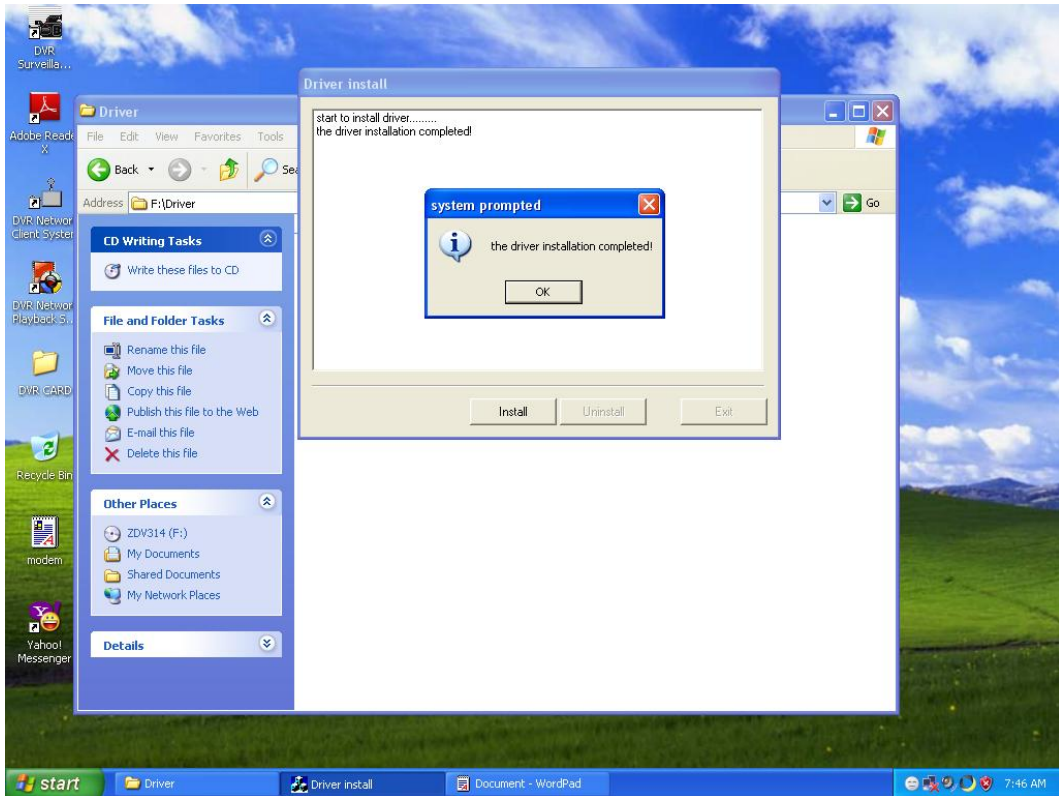
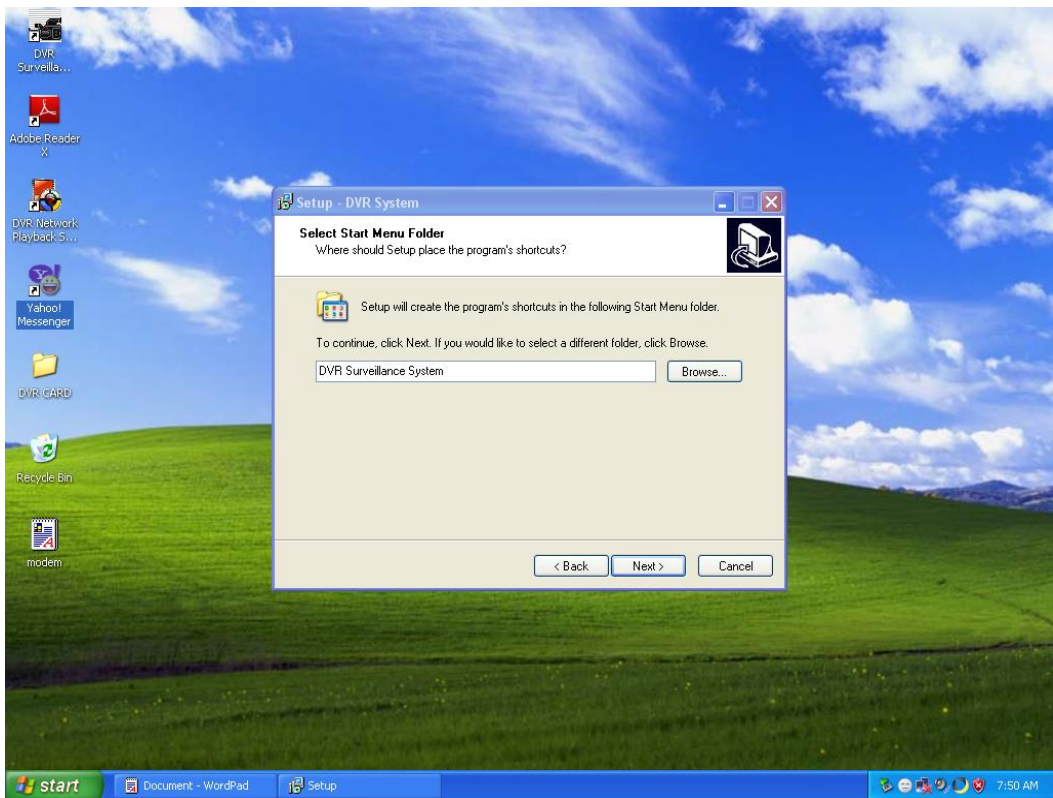
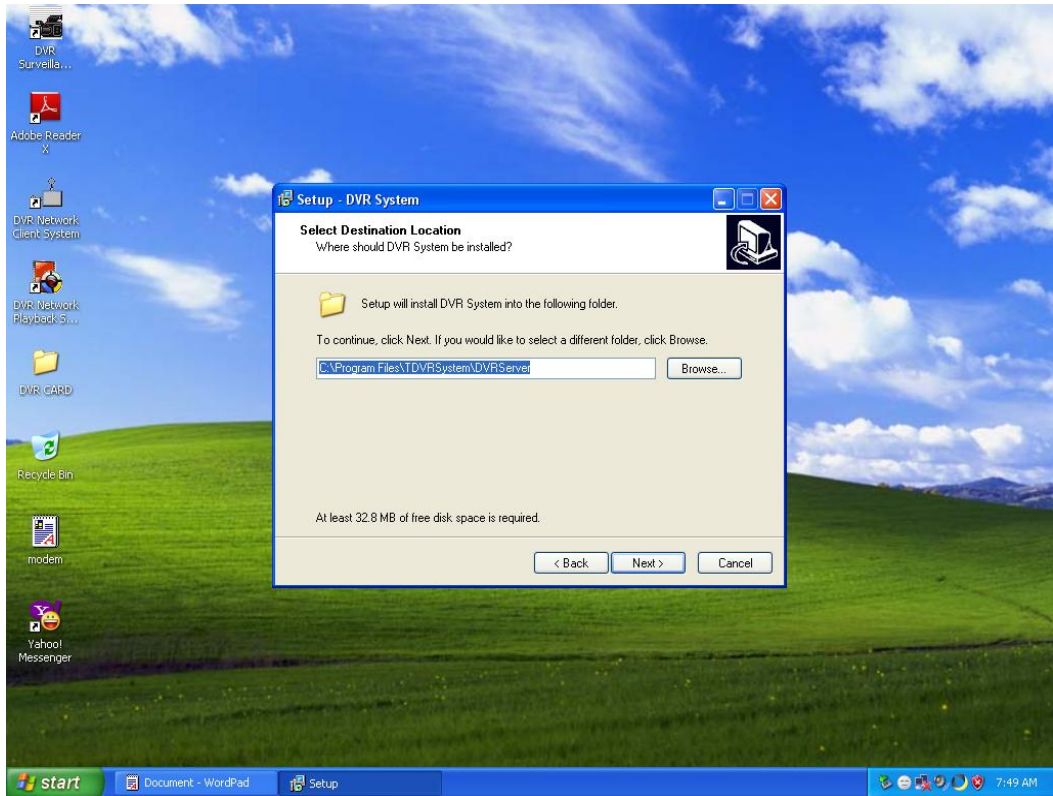


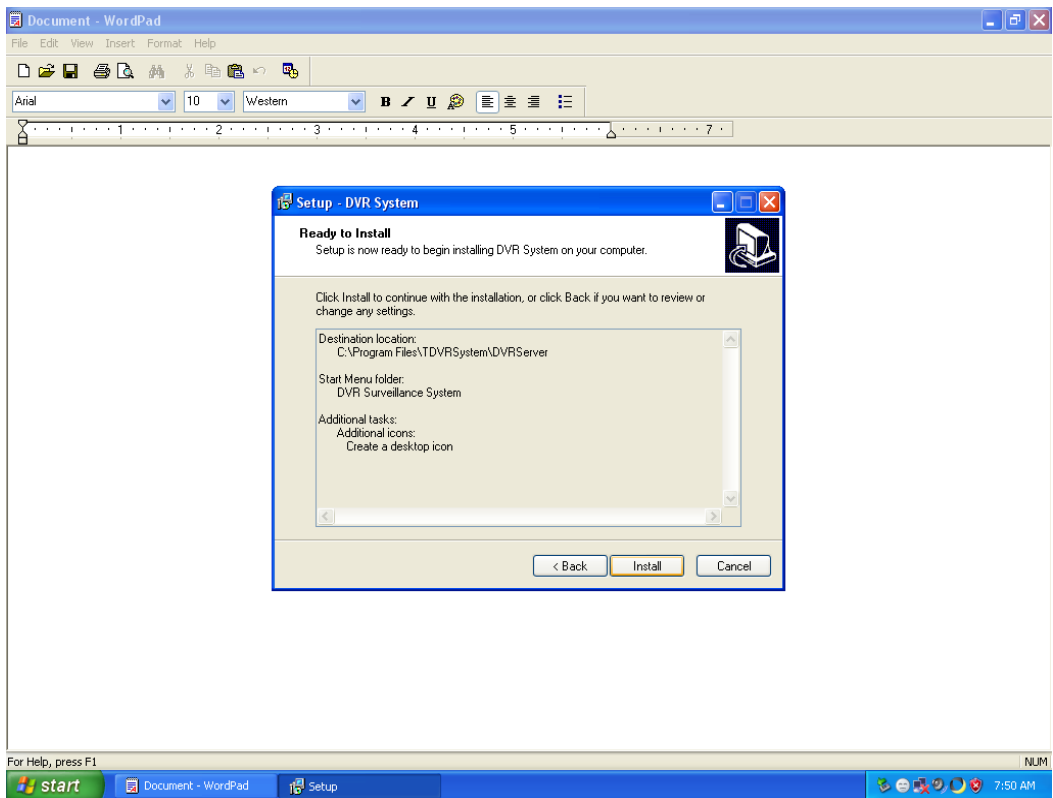
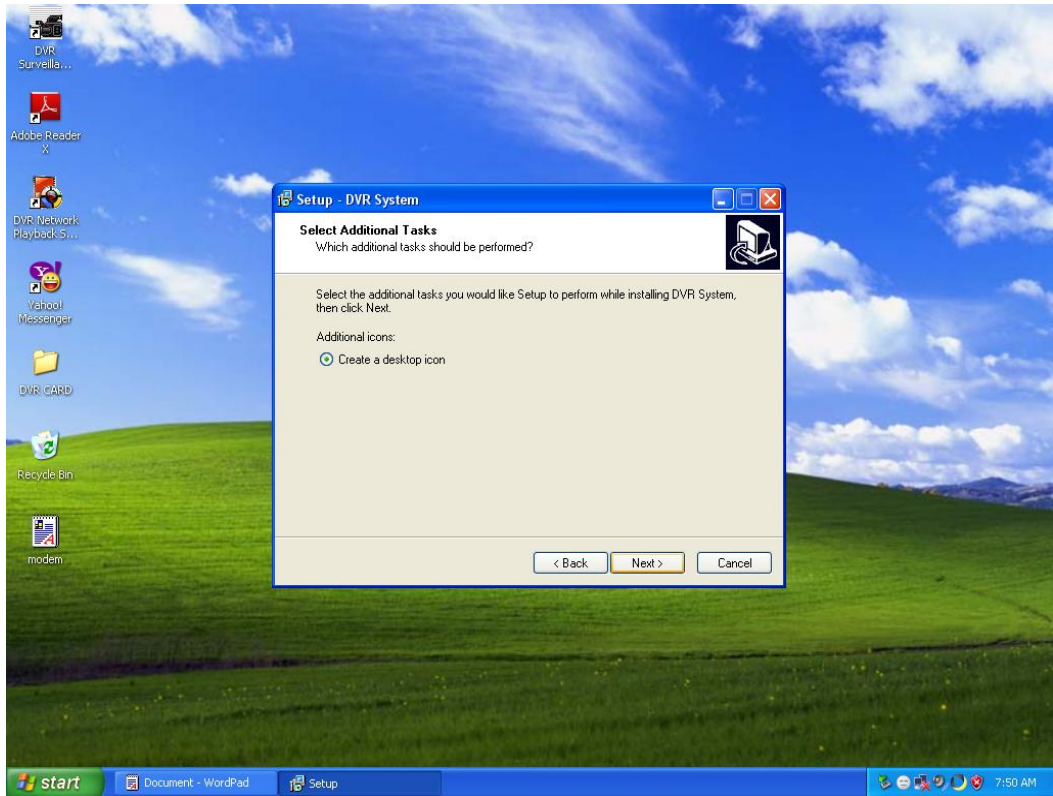
LAMPIRAN A

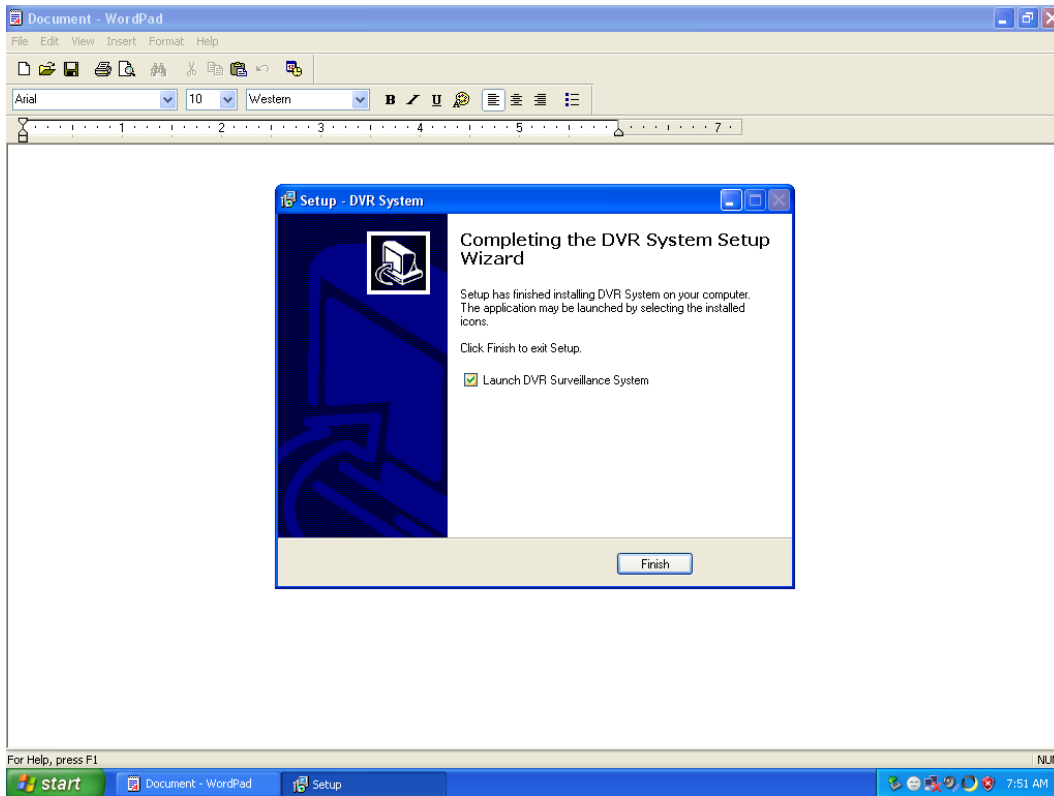
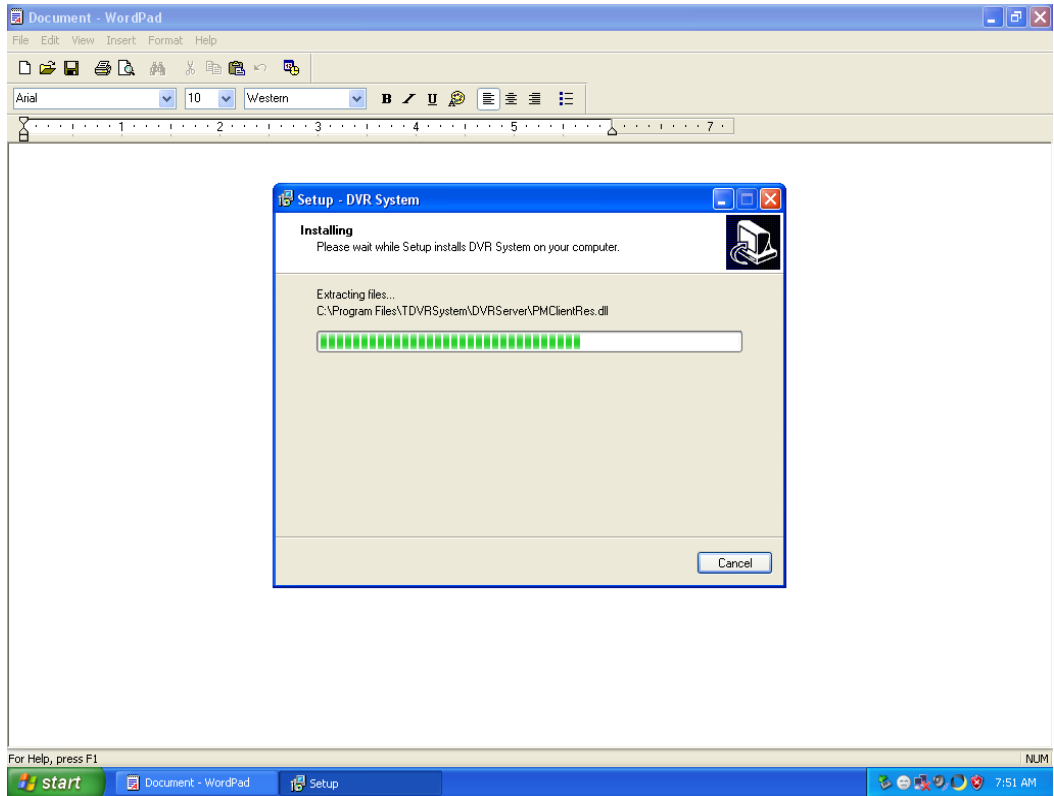
Proses instalasi *hardware* akan dijelaskan dalam Lampiran A ini.

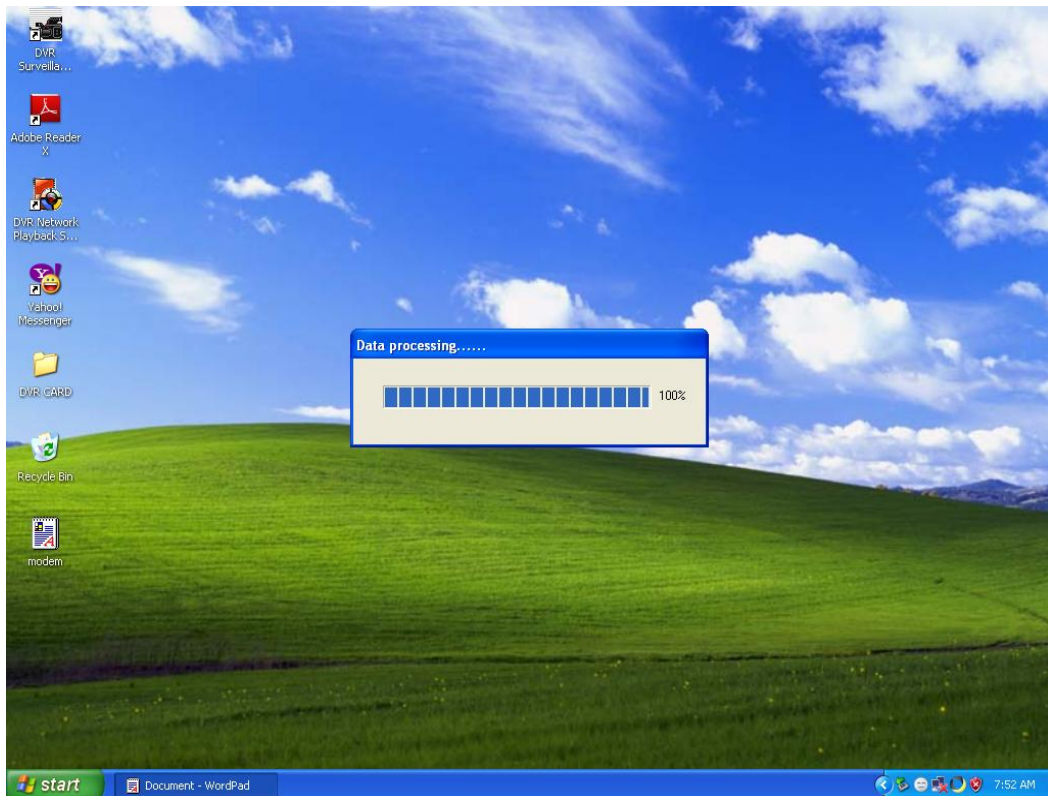
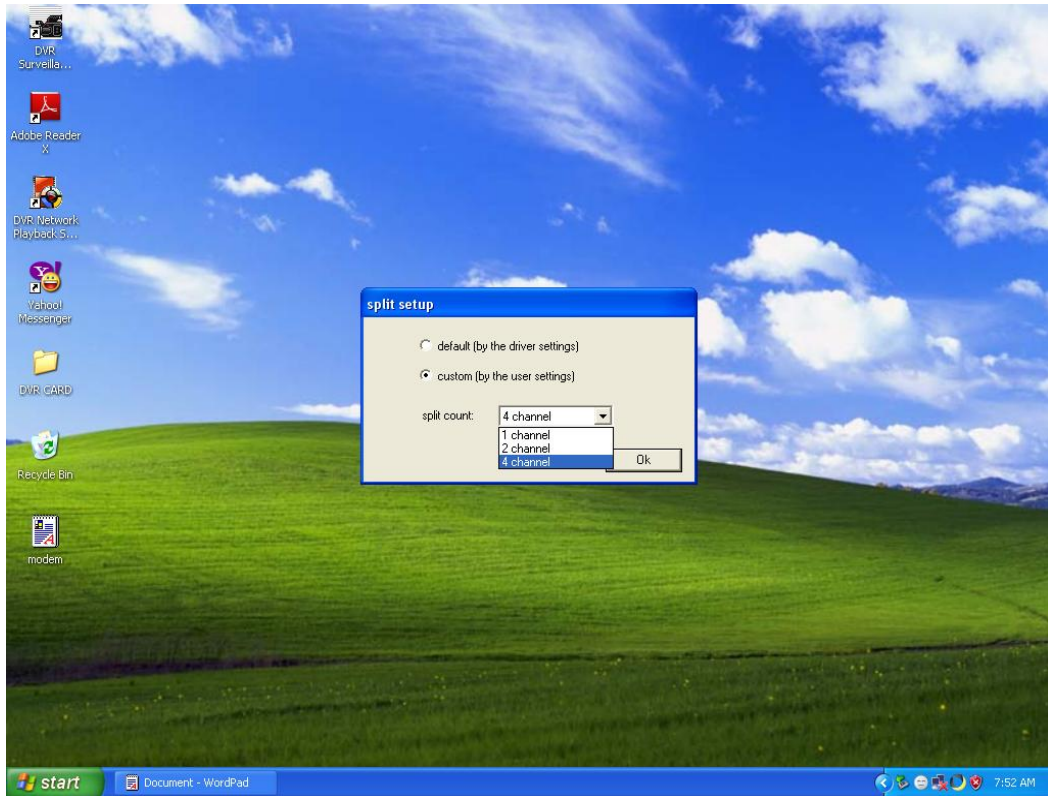


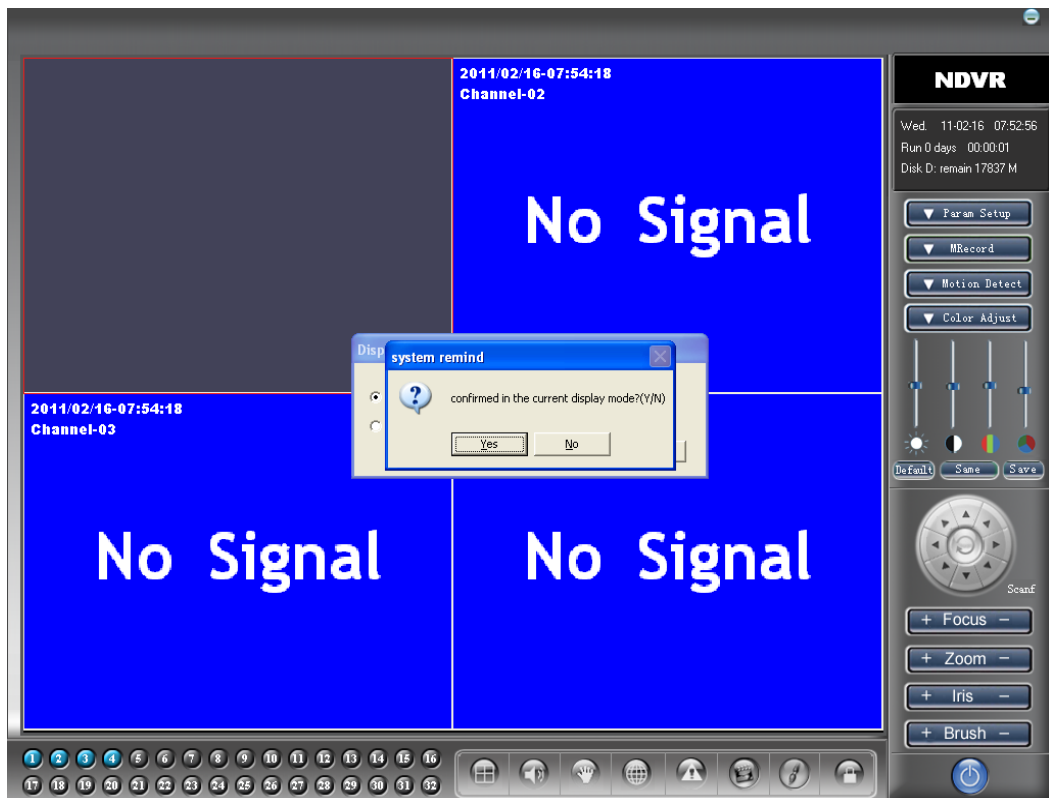
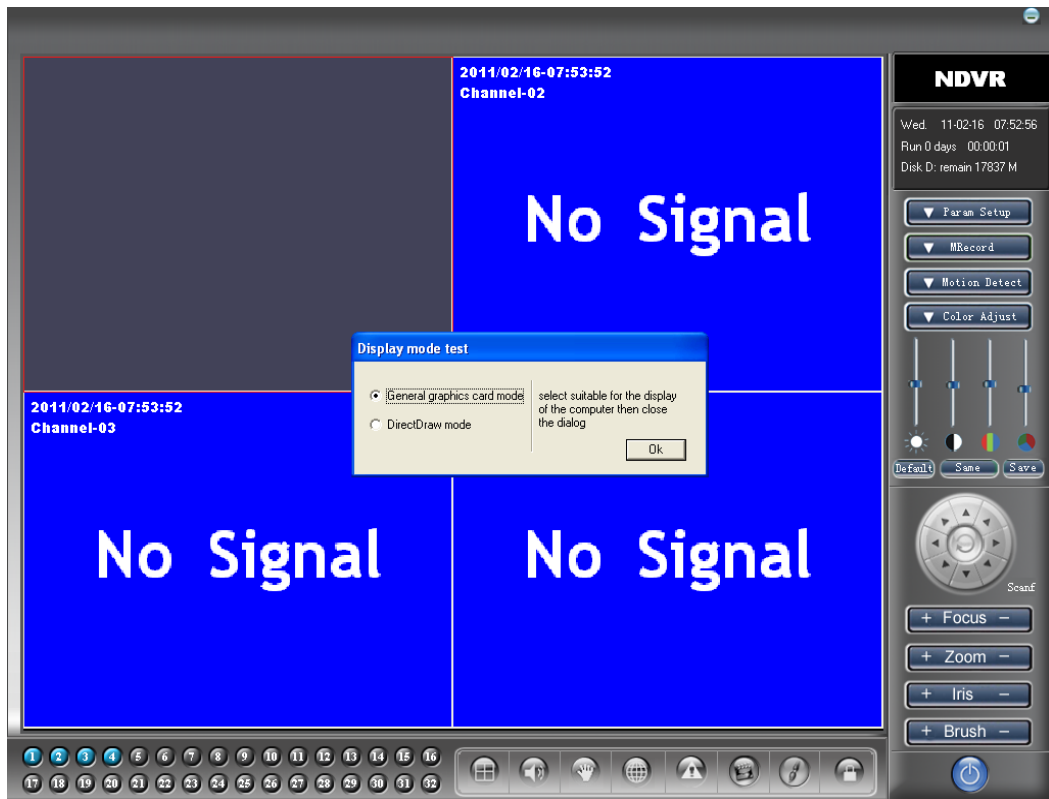


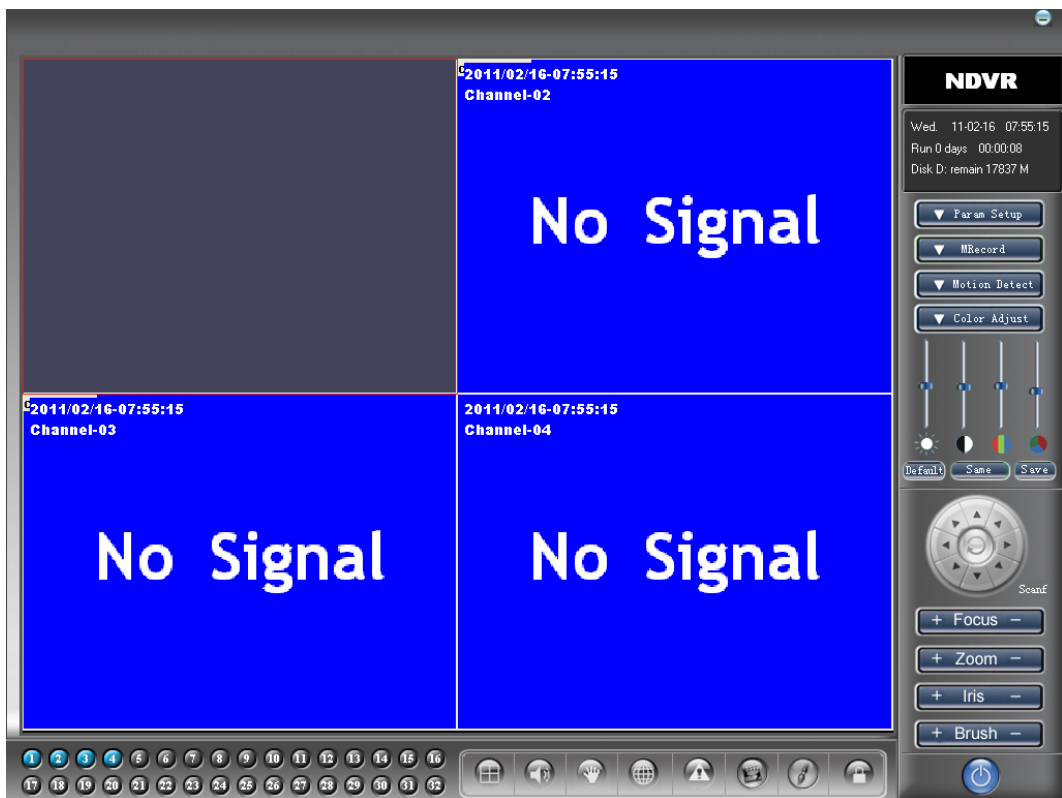
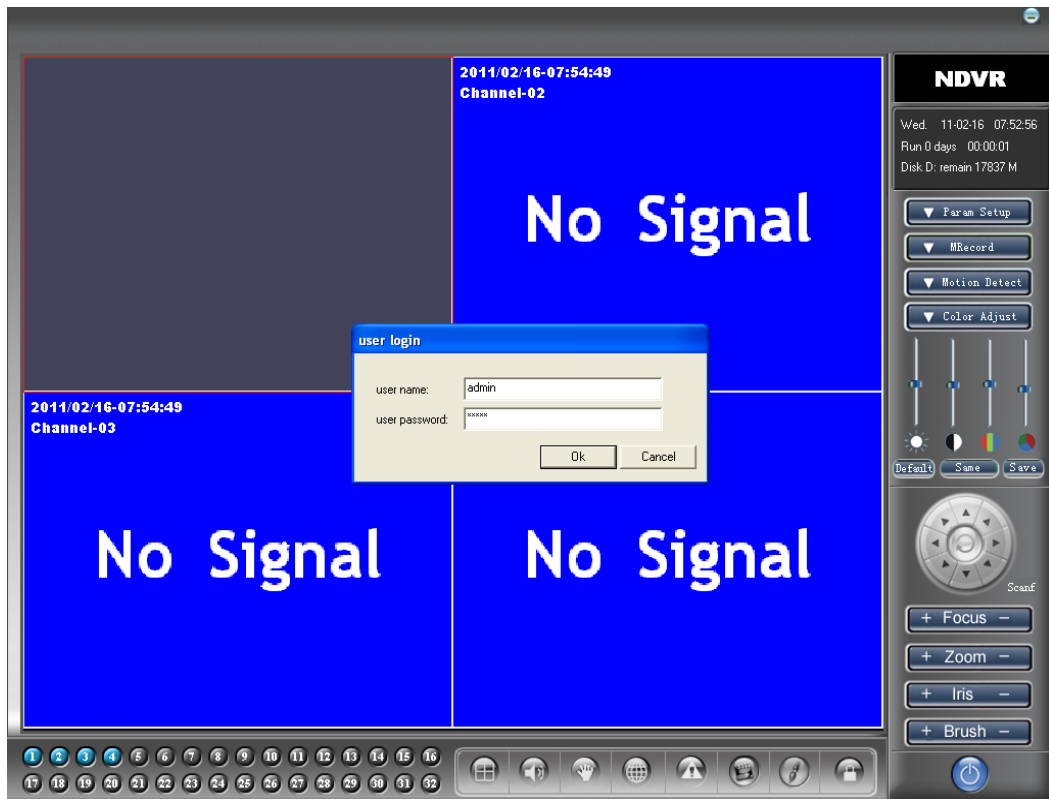


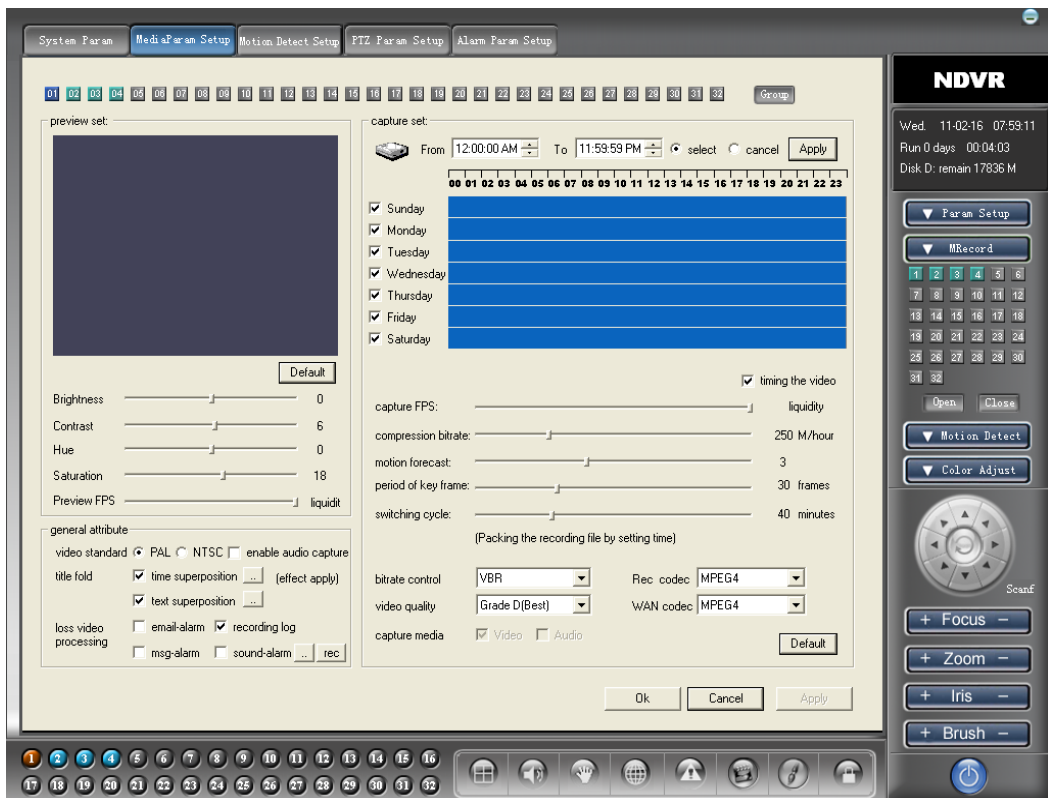
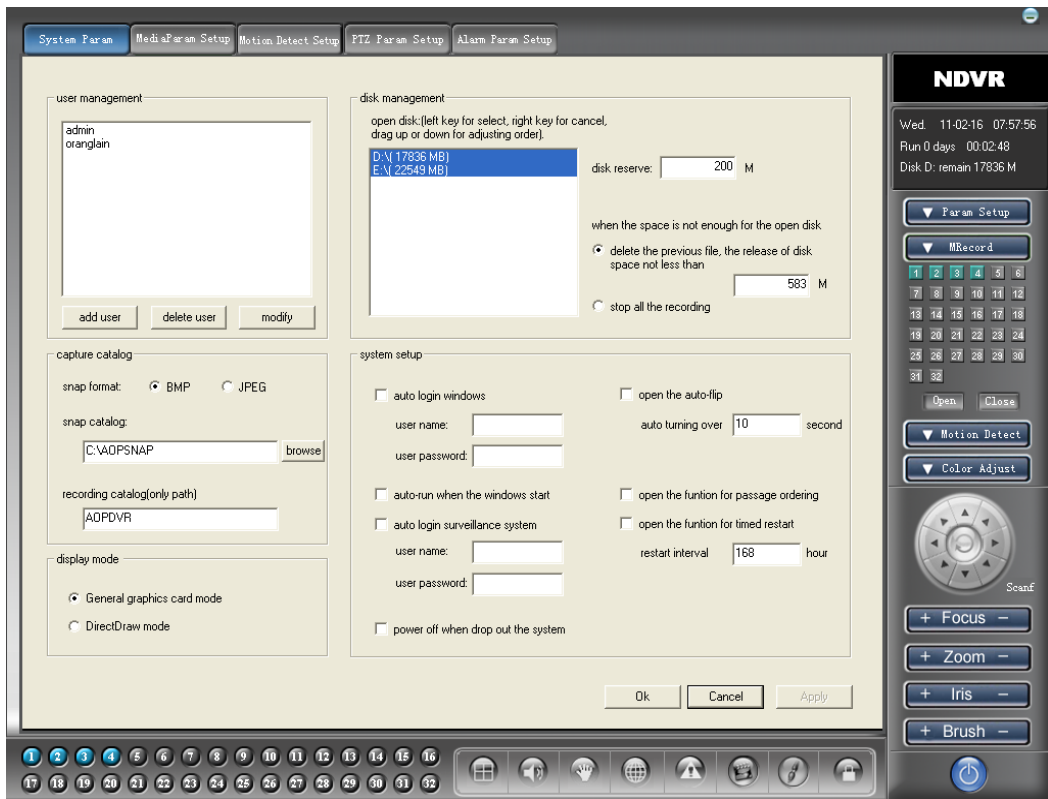


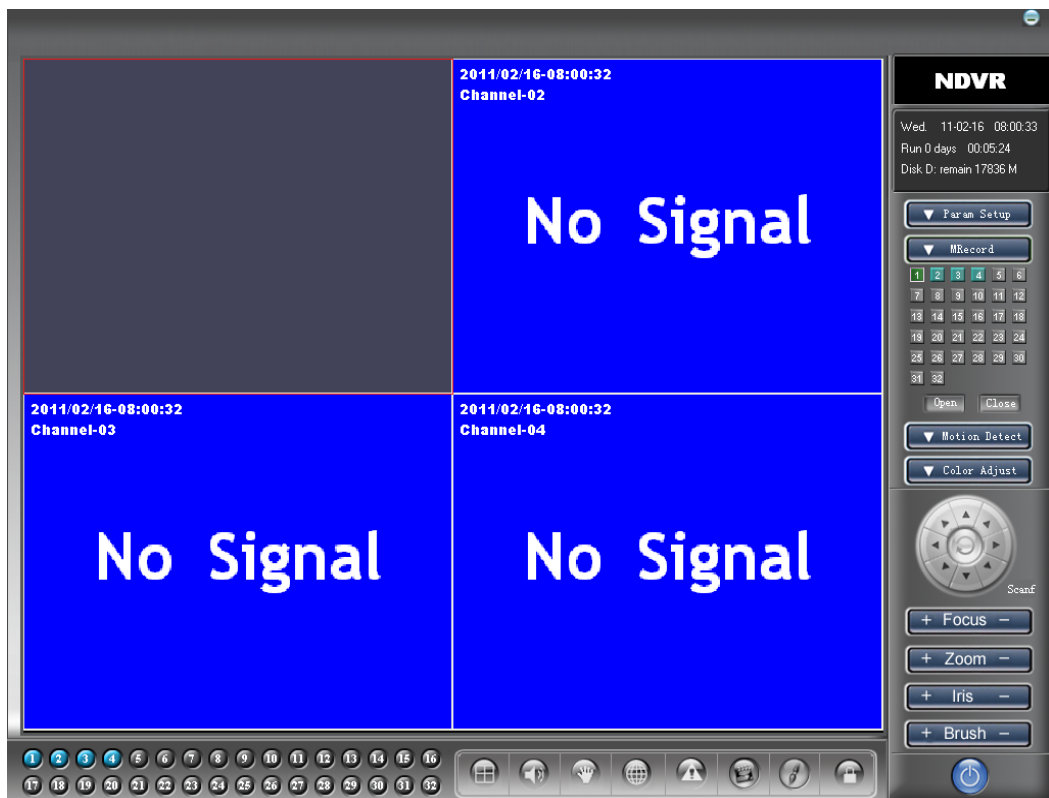
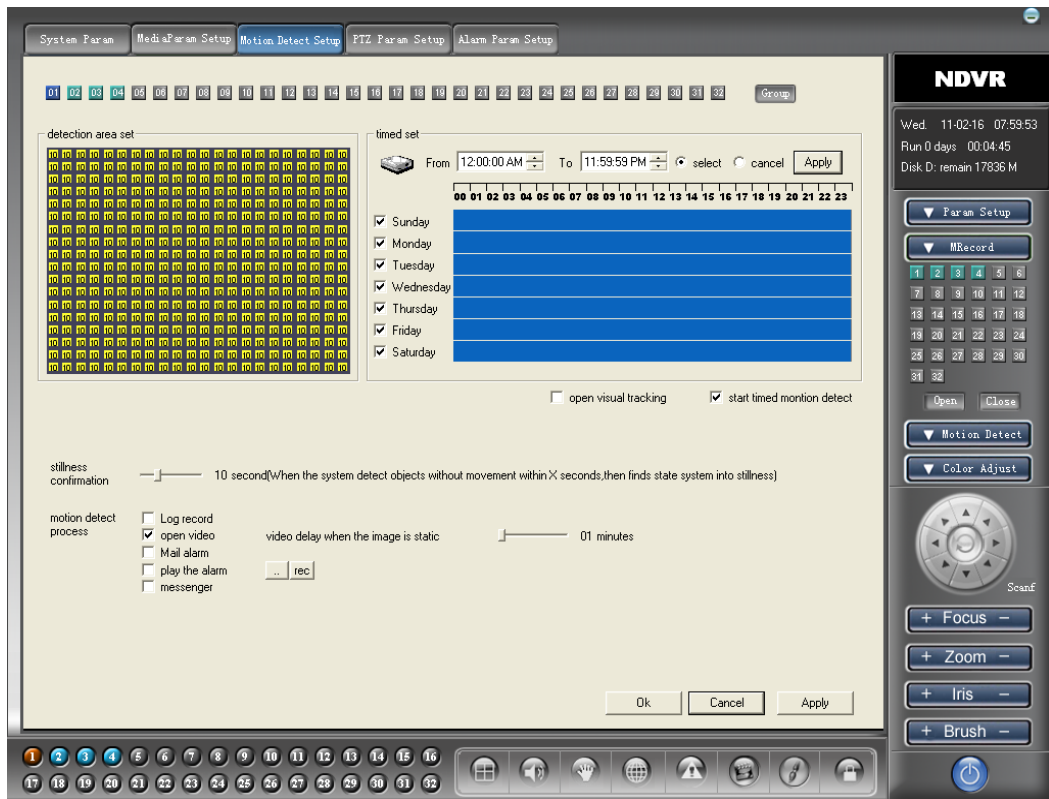








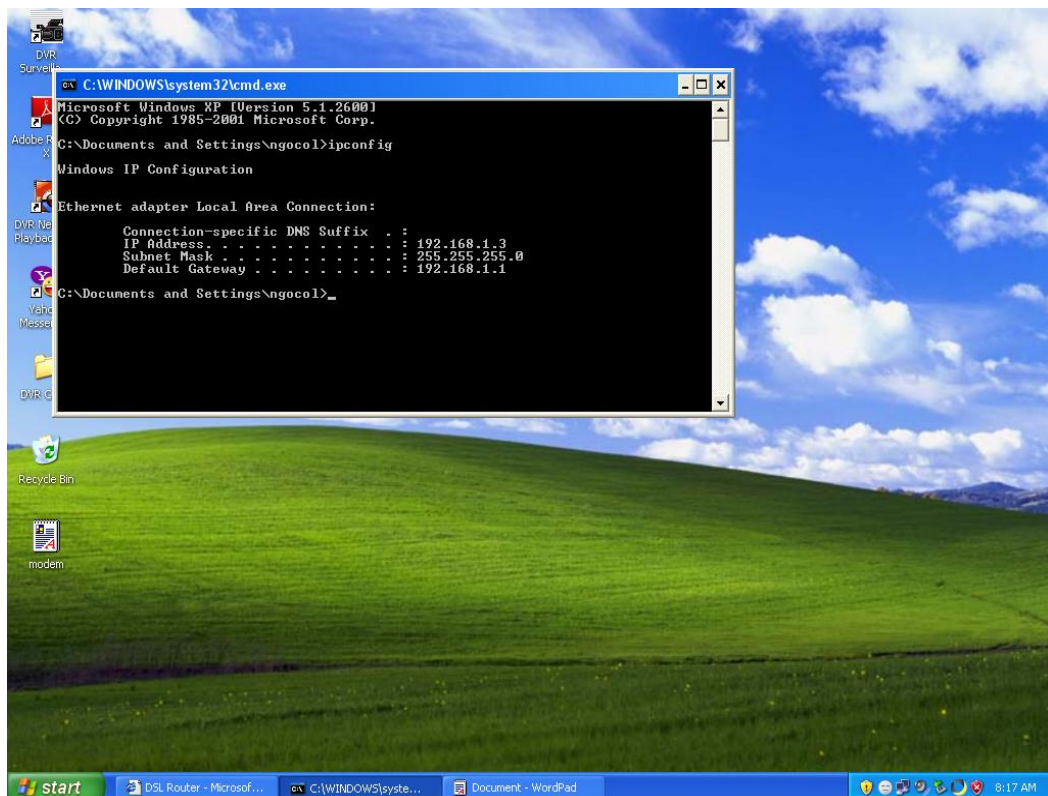




LAMPIRAN B

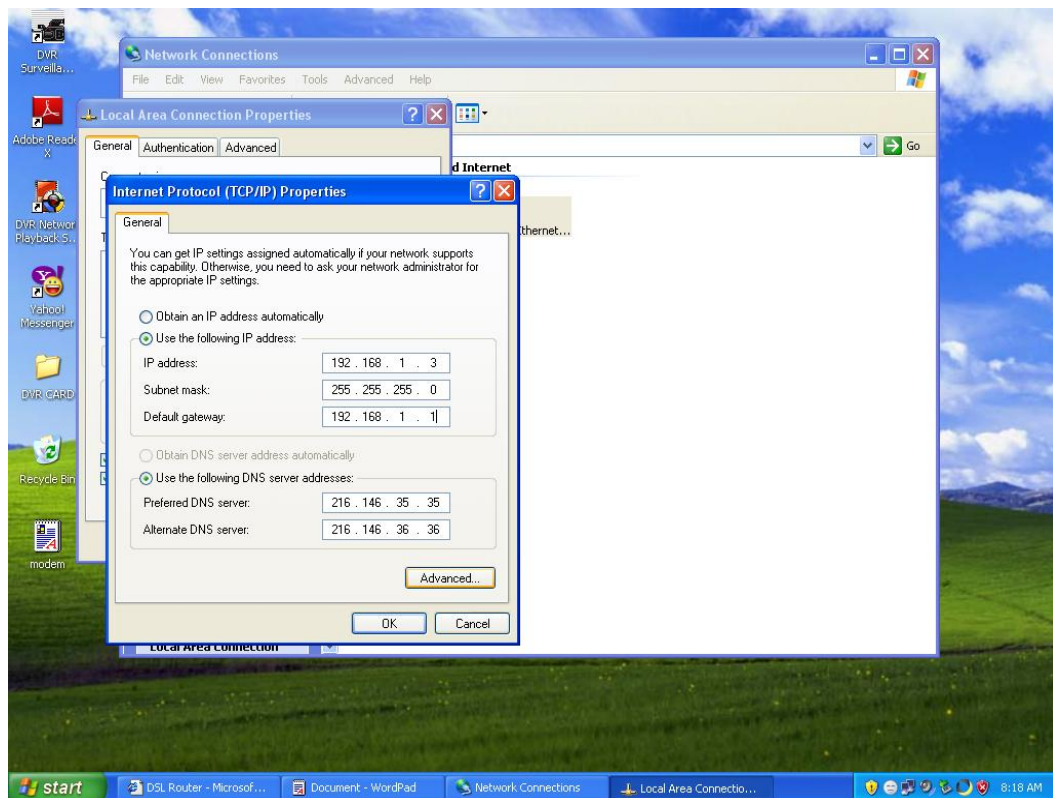
Proses konfigurasi *hardware* dan jaringan akan dijelaskan dalam Lampiran B ini.

- Konfigurasi IP *server*

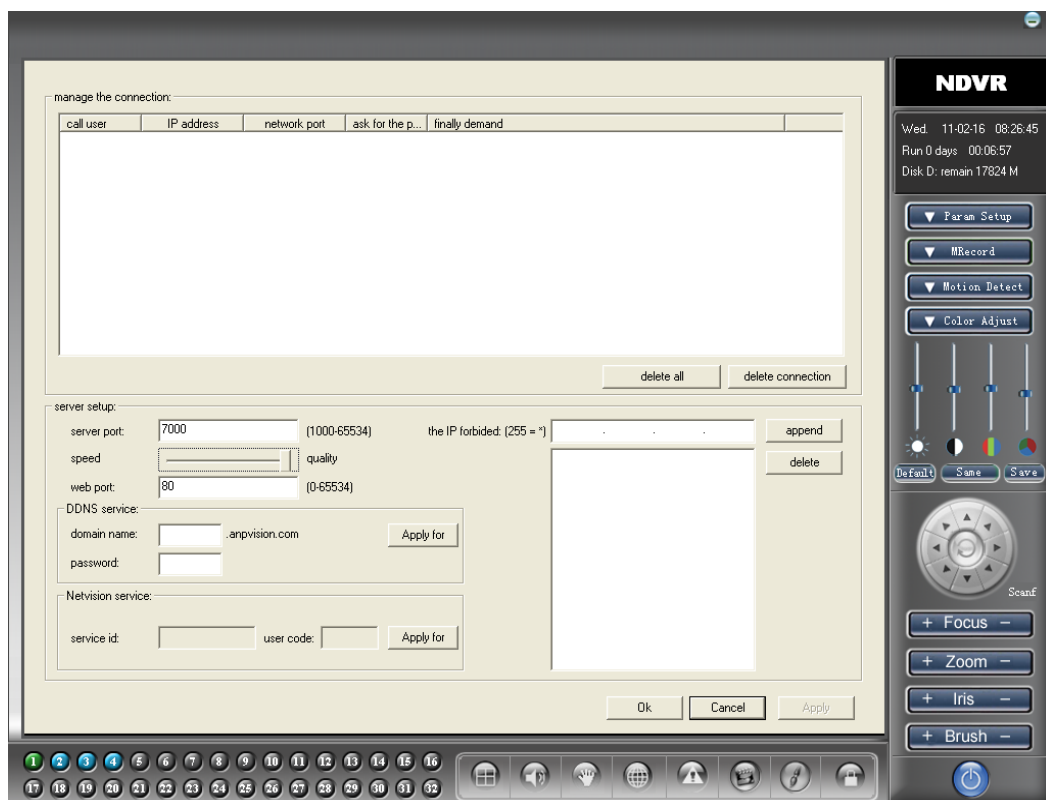
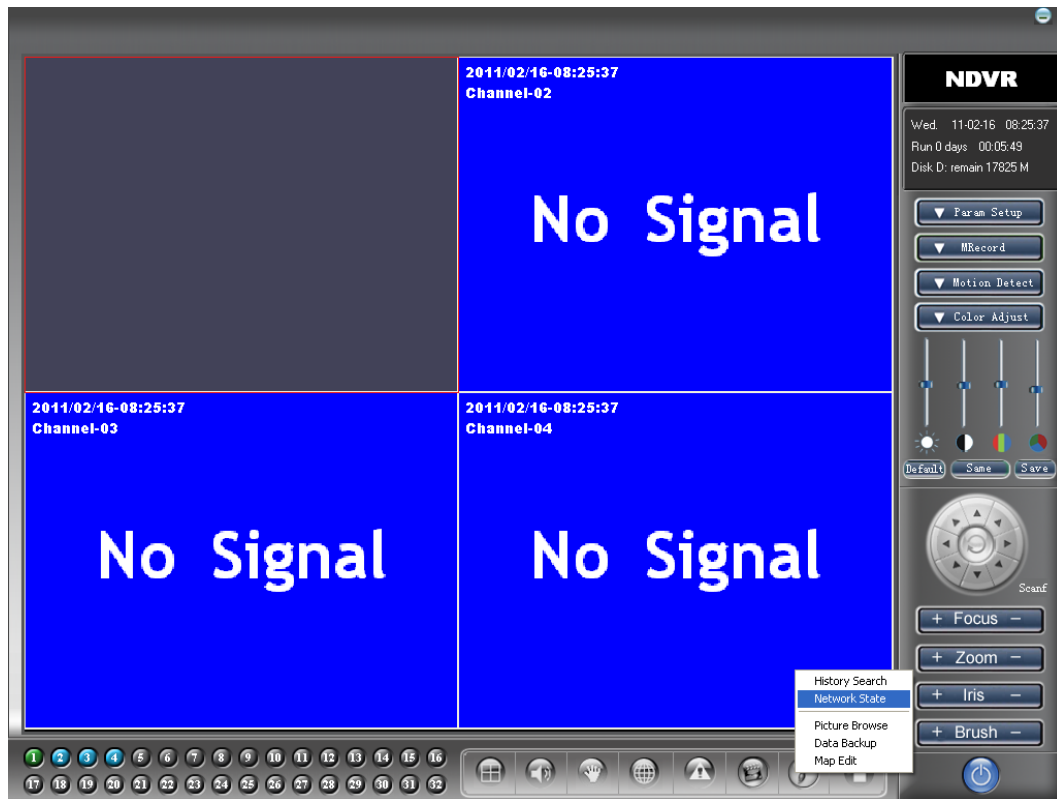




- Konfigurasi TCP/IP



- Konfigurasi *Port Server*



- Konfigurasi pada modem ADSL

External Port Start	External Port End	Protocol	Internal Port Start	Internal Port End	Remote Ip
7000	7000	TCP	7000	7000	118.96.200.35
		TCP			
		TCP			
		TCP			
		TCP			
		TCP			
		TCP			
		TCP			
		TCP			
		TCP			
		TCP			
		TCP			

NAT -- Virtual Servers Setup

Virtual Server allows you to direct incoming traffic from WAN side (identified by Protocol and External port) to the Internal server with private IP address on the LAN side. The Internal port is required only if the external port needs to be converted to a different port number used by the server on the LAN side. A maximum 32 entries can be configured.

Add Remove

Server Name	External Port Start	External Port End	Protocol	Internal Port Start	Internal Port End	Server IP Address	Remote Host	Remove
DVR	7000	7000	TCP	7000	7000	192.168.1.3	118.96.200.35	<input type="checkbox"/>

DSL Router - Microsoft Internet Explorer

File Edit View Favorites Tools Help

Back Forward Stop Home Search Favorites Refresh Print Mail

Address http://192.168.1.1/

192.168.1.1

DSL Router

D-Link

Device Info

Quick Setup

Advanced Setup

WAN

LAN

NAT

Virtual Servers

Port Triggering

DMZ Host

Security

Quality of Service

Routing

DNS

DSL

Port Mapping

Diagnostics

Management

NAT -- Port Triggering Setup

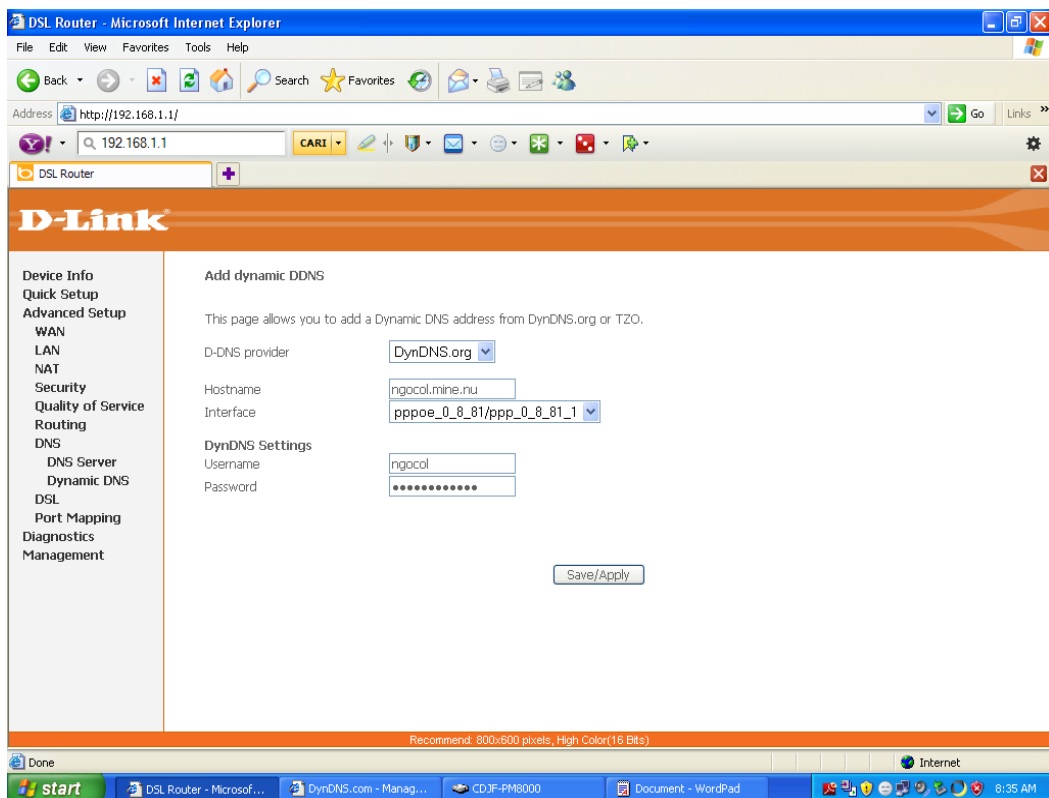
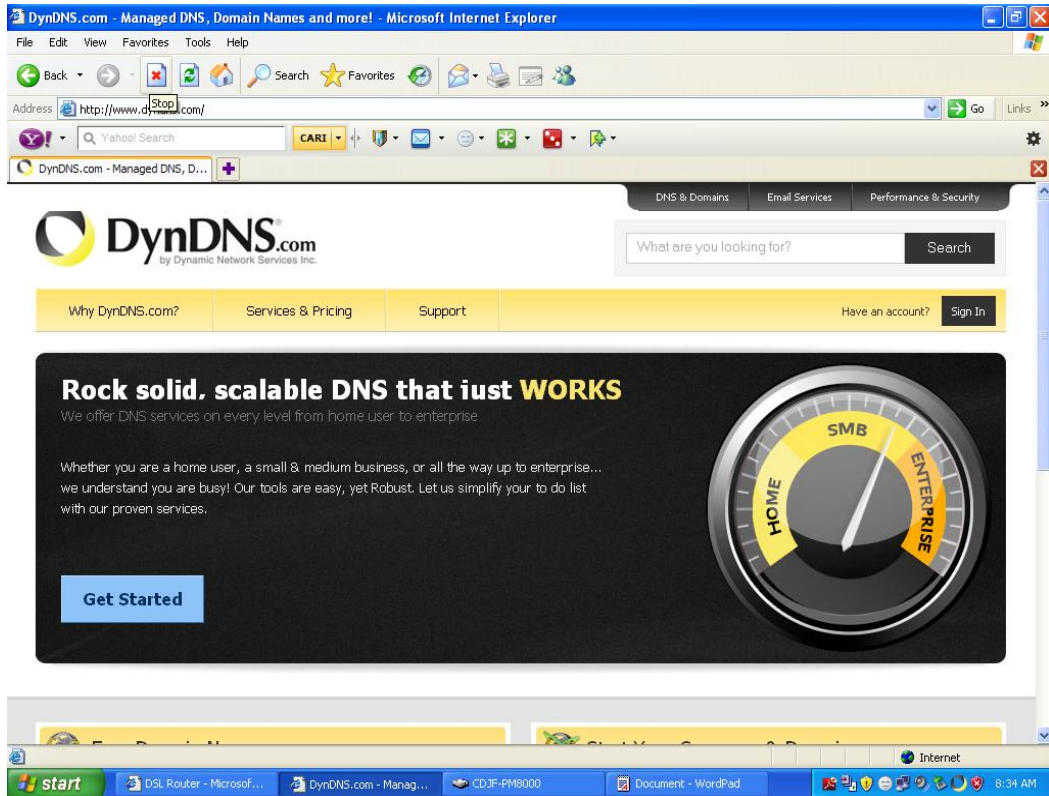
Some applications require that specific ports in the Router's firewall be opened for access by the remote parties. Port Trigger dynamically opens up the 'Open Ports' in the firewall when an application on the LAN initiates a TCP/UDP connection to a remote party using the 'Triggering Ports'. The Router allows the remote party from the WAN side to establish new connections back to the application on the LAN side using the 'Open Ports'. A maximum 32 entries can be configured.

Application	Trigger		Open		Remove		
	Protocol	Port Range	Protocol	Port Range			
Name	Start	End	Start	End			
DVR	TCP	7000	7000	TCP	7000	7000	<input type="checkbox"/>

Recommend: 800x600 pixels, High Color(16 Bits)

start | DSL Router - Microsof... | http://192.168.1.3/ -... | CDJF-PM8000 | Document - WordPad | Internet | 8:33 AM

- Pembuatan dan konfigurasi memakai DynDNS pada modem ADSL



DSL Router - Microsoft Internet Explorer

File Edit View Favorites Tools Help

Back Forward Stop Home Search Favorites Refresh Print Mail

Address http://192.168.1.1/

192.168.1.1

DSL Router

D-Link

Device Info

Quick Setup

Advanced Setup

WAN

LAN

NAT

Security

Quality of Service

Routing

DNS

 DNS Server

 Dynamic DNS

DSL

Port Mapping

Diagnostics

Management

Dynamic DNS

The Dynamic DNS service allows you to alias a dynamic IP address to a static hostname in any of the many domains, allowing your DSL router to be more easily accessed from various locations on the Internet.

Choose Add or Remove to configure Dynamic DNS.

Hostname	Username	Service	Interface	Remove
ngocol.mine.nu	ngocol	dyndns	ppp_0_8_81_1	<input type="checkbox"/>

Recommend: 800x600 pixels, High Color(16 Bits)

Opening page http://192.168.1.1/ddnsmngr.cmd...

start | DSL Router - Microsof... | DynDNS.com - Manag... | CDJF-PM8000 | Document - WordPad | Internet | 8:36 AM