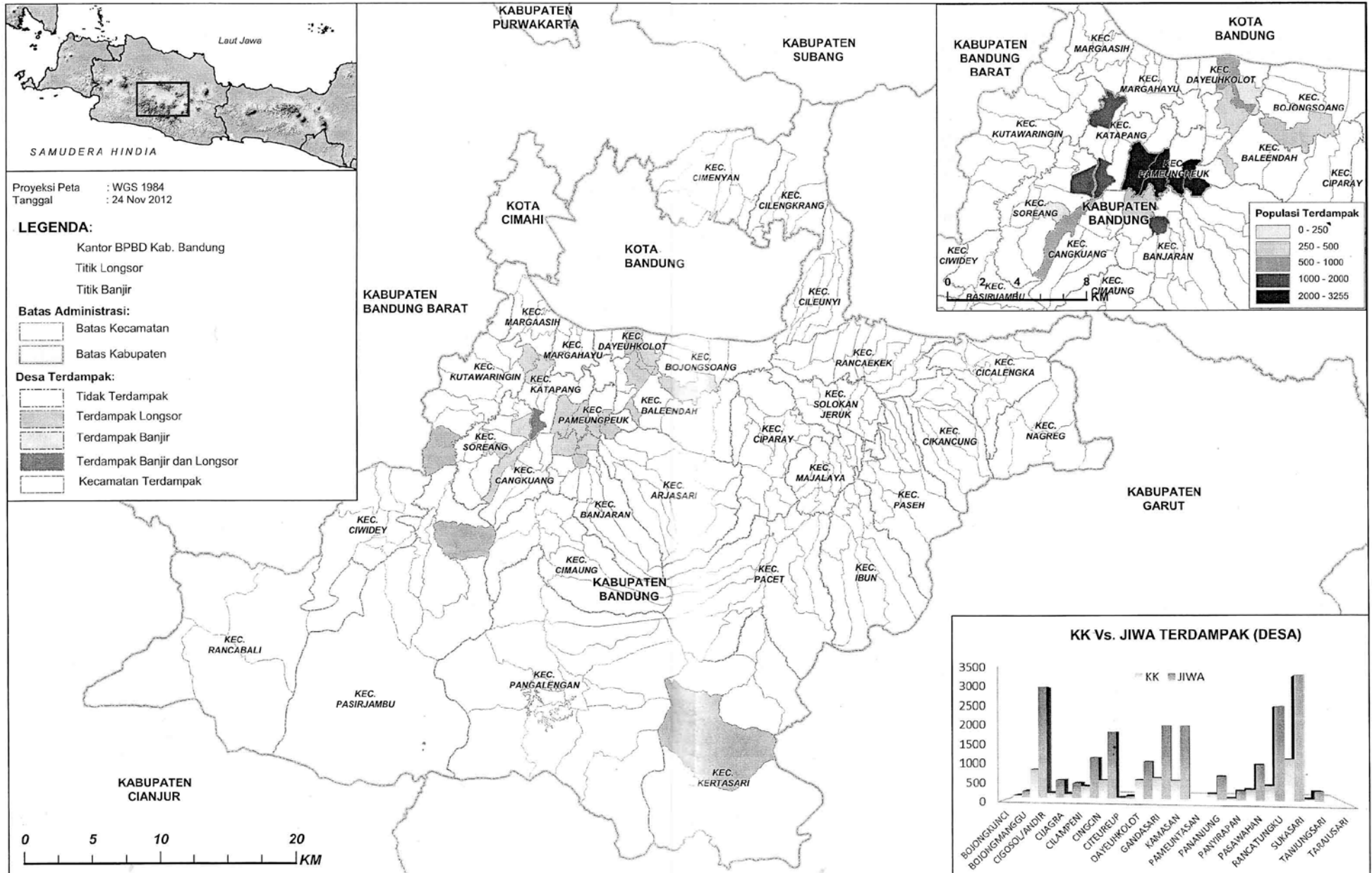


LAMPIRAN

PETA WILAYAH TERDAMPAK BENCANA ALAM BANJIR DAN TANAH LONGSOR KABUPATEN BANDUNG



Disclaimer: The designations employed and presentation materials on this map does not imply the expression of any opinion of International Organization for Migration (IOM) concerning the legal status of any country, territory, or administrative boundaries.

International Organization for Migration (IOM) - West Java
 Jl. Setrasari II No. 16 - Bandung - West Java, Indonesia. Phone: +62 22 2011094, Fax: 62 22 2007 896
<https://www.iom.or.id>

LEMBAR KUESIONER

Yth. Sukarelawan, saya adalah mahasiswa Teknik Industri Universitas Kristen Maranatha Bandung. Untuk mendukung karya tulis saya yang membahas mengenai pengembangan rancangan **tas P3K khusus untuk evakuasi banjir**, maka dari itu saya sangat membutuhkan bantuan dari bapak atau ibu sukarelawan untuk mengisi kuesioner ini. Atas waktunya, saya ucapkan banyak terimakasih.

PETUNJUK

Berikan tanda *checklist* (√) di kolom tingkat kepentingan sesuai dengan apa yang dirasakan oleh bapak atau ibu sukarelawan terhadap tas P3K yang dibawa pada saat menghadapi medan evakuasi banjir, dimana:

- 1: Sangat Tidak Penting
- 2: Tidak Penting
- 3: Penting
- 4: Sangat Penting

Tidak ada jawaban benar maupun salah. Responden boleh memberikan saran atas alternatif lain yang berhubungan dengan masing-masing poin kuesioner di dalam kolom keterangan.

No	Spesifikasi Tas P3K	Tingkat Kepentingan				Keterangan
		1	2	3	4	
1	Dimensi tas yang tidak terlalu besar					
2	Tas tidak mengganggu ruang gerak					
3	Model tas menyerupai koper					
4	Tas memiliki rangka					
5	Warna tas mencolok					
6	Terdapat garis <i>glow in the dark</i> di bagian depan tas					
7	Bahan tas tidak tembus air					
8	Tas kuat					
9	Bahan tas tahan lama					
10	Tas dapat digendong					
11	Tas dapat dijinjing					
12	Keragaman cara membawa tas					
13	Bagian punggung terasa nyaman saat menggendong tas					
14	Dilapisi busa tebal di bagian punggung					
15	Terdapat kontur punggung di bagian belakangnya					
16	Bagian tangan tas terasa nyaman saat digunakan					
17	Dilapisi busa tebal di bagian tali ransel					
18	Terdapat pengait di bagian perut tas					
19	Terdapat pengait di bagian dada tas					
20	Tas dilengkapi sleting					
21	Kemudahan membuka-tutup tas					
22	Tas yang tidak terlalu berat					
23	Kelengkapan isi					
24	Kesesuaian isi dengan bencana tertentu					
25	Pengelompokkan obat-obatan dan peralatan isi sesuai jenis					
26	Obat-obatan dan peralatan isi dimasukkan ke dalam tas kecil bening					
27	Terdapat daftar isi obat-obatan dan peralatan per bagian					
28	Urutan letak penyimpanan obat-obatan dan peralatan					
29	Dimensi <i>kit</i> yang tidak terlalu kecil					
30	<i>Kit</i> terdapat pengait untuk mengencangkan					
31	<i>Kit</i> tidak mengganggu ruang gerak					
32	<i>Kit</i> berwarna mencolok					
33	<i>Kit</i> dilengkapi sleting					
34	Kemudahan membuka-tutup <i>kit</i>					
35	Kelengkapan isi <i>kit</i> sesuai kebutuhan bencana tertentu					

	1	2	3	4	5	6	7	8	9	10	11	12	13	14	15	16	17	18	19	20	21	22	23	24	25	26	27	28	29	30	31	32	33	34	35	TOT		
1	1																																					
2	0,514792	1																																				
3	0,142017	-0,02164	1																																			
4	0,112057	-0,1201	0,275445	1																																		
5	0,097811	0,144762	0,075174	-0,14778	1																																	
6	0,230598	0,038533	-0,005	-0,32856	0,127599	1																																
7	-0,07049	-0,18257	-0,09481	0,350823	-0,13876	0,147737	1																															
8	0,273821	-0,21822	0,02833	0,091725	-0,01185	0,201805	0,239046	1																														
9	0,431794	0,054554	0,240802	0,288278	-0,18954	0,012613	-0,11952	0,464286	1																													
10	0,305415	0,354604	0,007082	0,07207	0,041462	-0,13874	0,059761	0,25	0,25	1																												
11	-0,06732	-0,155	-0,25656	-0,16753	-0,1767	-0,01344	0,254686	0,076102	0,076102	0,304408	1																											
12	0,268979	0,126667	0,065777	0,017385	0,001965	0,060662	0,138757	0,011846	0,011846	0,313923	0,176697	1																										
13	0,288928	0,367109	-0,24929	-0,29844	0,085253	0,329705	0,030934	0,073947	0,073947	0,434441	0,21666	0,125705	1																									
14	0,247492	0,327327	-0,21955	-0,17035	0,047385	0,327934	0,298807	0,285714	0,017857	0,339286	0,076102	0,041462	0,536119	1																								
15	0,296665	0,311805	-0,06939	-0,30492	0,029017	0,355293	0,146385	0,393668	0,174964	0,371798	0,201945	0,116068	0,498117	0,721725	1																							
16	0,247492	0,327327	-0,00708	-0,17035	0,402769	0,138741	0,119523	0,017857	0,017857	0,205357	0,076102	0,396846	0,397467	0,330357	0,50302	1																						
17	0,327327	0,221163	0,114848	-0,2479	0,192096	0,392014	0,161515	0,193047	0,193047	0,048262	0,051419	0,208104	0,049964	0,313701	0,413758	0,55501	1																					
18	0,247692	0,311046	0,212	0,056033	0,386254	0,33035	0,063888	-0,15272	-0,15272	0,152721	-0,24407	-0,00633	0,108698	0,324532	0,062348	0,133631	0,326762	1																				
19	0,271511	0,443128	0,080039	-0,15734	0,123416	0,135857	0,105527	-0,01261	-0,01261	0,42253	0,147819	0,190353	0,35582	0,33424	0,339845	0,428836	0,289749	0,478671	1																			
20	0,095435	0,019014	0,009874	0,237485	0,274563	-0,16045	0,020829	-0,0249	-0,0249	-0,00622	-0,1061	0,097026	0,074098	-0,18049	-0,32015	0,192938	0,067283	0,24618	0,094514	1																		
21	0,434355	0,166667	0,086548	0,180144	0,416192	0,134865	1,01E-17	0,327327	0,327327	0,081832	-0,05812	0,126667	0,225913	0,054554	0,089087	0,327327	0,344031	0,213844	0,057799	0,684505	1																	
22	0,105714	0,174239	0,025852	-0,18534	-0,05135	0,486281	-0,02727	-0,06518	0,179247	-0,0163	0,243059	0,294572	0,257265	0,138509	0,259447	0,382937	0,396363	0,078391	0,463262	0,019878	0,174239	1																
23	0,045775	-0,18631	0,233073	-0,06916	0,34387	0,221242	-0,09277	-0,0887	-0,0887	-0,35481	0,03544	-0,1232	-0,2273	-0,12222	0,022176	-0,13485	-0,10075	-0,27998	0,229937	0,321803	0,032884	1																
24	0,121052	0,046449	0,054271	0,050205	0,355534	0,346328	-0,07632	0,091224	0,091224	0,136836	-0,0162	0,098339	0,436788	0,205253	0,148968	0,091224	-0,14382	0,316947	0,056379	0,071538	0,278693	0,239328	0,21949	1														
25	0,247492	0,327327	-0,32579	-0,17035	0,402769	0,42253	0,119523	0,017857	0,017857	0,205357	0,171229	0,219154	0,67477	0,330357	0,284316	0,330357	-0,04826	0,03818	0,050451	0,099581	0,327327	0,260723	0,271653	0,547343	1													
26	0,282454	0,301918	-0,14472	0,03347	0,400921	0,13692	0,076323	0,136836	-0,09122	0,547343	0,016199	0,355534	0,507618	0,250865	0,130347	0,364895	-0,06164	0,170664	0,346328	0,325893	0,41804	0,176895	-0,00708	0,359223	0,592954	1												
27	0,088113	0,342327	-0,32591	0,054816	0,396448	-0,18467	-0,05	-0,29881	-0,29881	0,261456	0,079589	0,272558	0,425348	-0,03735	-8,1E-17	0,298807	-0,30284	0,07986	0,263816	0,286396	0,228218	0,034084	0,046384	0,381616	0,522913	0,572425	1											
28	0,484208	0,41804	-0,32563	-0,0502	-0,27989	0,298003	0,22897	0,136836	0,136836	0,205253	0,178186	0,279888	0,271517	0,364895	0,409661	0,136836	0,349274	-0,07314	0,185245	-0,07154	0,185795	0,385006	-0,07788	-0,02913	0,250865	0,223301	0,095404	1										
29	0,492331	0,142675	-0,08798	0,004284	0,065835	0,053602	-0,03907	0,046701	0,221832	0,011675	0,261224	0,050344	0,042305	0,338585	0,243089	0,25102	0,268213	0,099852	0,255642	-0,16684	0,053503	0,202429	-0,05075	0,014911	-0,01168	-0,01491	-0,02442	0,208754	1									
30	0,435482	0,091145	0,017749	-0,06568	0,363669	0,323988	-0,07488	-0,04475	0,179005	0,044751	0,286075	0,08164	0,104241	0,067127	0,292314	0,179005	0,120947	0,263126	0,150141	0,022396	0,205076	0,214394	0,326497	0,295292	0,402761	0,08573	0,187208	0,08573	0,468148	0,247963	1							
31	0,280102	0	0,28255	0	0,196916	-0,1258	-0,23842	0,237468	0,237468	-0,08433	0,039383	0,06146	-0,23747	0	-0,11873	0	0,042311	0,125796	0,206913	0,241825	-0,05417	-0,03686	0,050546	0	0,151639	0,09934	-0,05055	-0,07763	0,247963	1								
32	0,158183	0,150503	0,056445	0,032133	0,548308	0,286098	0,25646	0,186107	0,186107	0,251791	0,151628	0,159772	0,402339	0,32295	0,348604	0,405056	0,162729	0,397913	0,351824	0,122097	0,40134	0,169828	0,02719	0,531291	0,569267	0,377496	0,366372	-0,18176	0,200415	0,493831	0,145581	1						
33	0,161361	0,122322	0,089987	0,107729	0,028775	0,181466	0,022333	0,173503	0,173503	-0,00667	0,170635	0,104032	0,390331	0,106771	0,147113	0,306967	-0,01804	-0,0214	0,384142	0,234908	0,326191	0,478026	0,184387	0,247154	0,206869	0,178974	0,223328	0,008523	0,21379	0,025085	0,044371	0,315011	1					
34	0,439605	0,276956	0,06392	-0,01478	0,273967	0,135177	-0,06742	0,443203	0,141019	0,261892	0,064391	0,12696	0,479687	0,342475	0,394771	0,493567	0,16334	-0,02154	0,291699	0,259791	0,584685	0,26656	0,175123	0,205829	0,342475	0,566029	0,210687	0,1801	0,20416	0,025243	0,13395	0,234657	0,617327	1				
35	0,154782	0,356348	0,069393	-0,36377	0,067706	0,236862	-0,29277	0,116642	0,116642	0,174964	-0,02071	-0,06771	0,256606	0,262445	0,547619	0,116642	-0,05254	-0,21822	0,072088	-0,4167	-0,08909	0,172965	0,280649	0,161382	0,262445	0,086898	2,71E-17	0,335178	0,019066	0,133977	0,064631	-0,03575	0,098076	0,263181	1			
TOT	0,633364	0,451716	0,092594	-0,00571	0,446554	0,425986	0,140636	0,249025	0,249025	0,435794	0,198989	0,384605	0,592149	0,466922	0,533736	0,614781	0,399611	0,402102	0,552408	0,268517	0,610212	0,479341	0,171537	0,493622	0,614781	0,60626	0,397166	0,374357	0,36634	0,529813	0,210424	0,672687	0,485659	0,632111	0,23298	1		
r(0,5;30)	0,361	0,361	0,361	0,361	0,361	0,361	0,361	0,361	0,361	0,361	0,361	0,361	0,361	0,361	0,361	0,361	0,361	0,361	0,361	0,361	0,361	0,361	0,361	0,361	0,361	0,361	0,361	0,361	0,361	0,361	0,361	0,361	0,361	0,361	0,361	0,361		
Hasil	valid	valid	tdk valid	tdk valid	valid	valid	tdk valid	tdk valid	tdk valid	valid	tdk valid	valid	valid	valid	valid	valid	valid	valid	valid	tdk valid	valid	valid	tdk valid	valid	valid	valid	valid	valid	valid	valid	tdk valid	valid	valid	valid	tdk valid	tdk valid		

Anti-image Matrices

	var1	var2	var5	var6	var10	var12	var13	var14	var15	var16	var17	var18	var19	var21	var22	var24	var25	var26	var27	var28	var29	var30	var32	var33	var34	
Anti-image Covariance	var1	.108	-.045	.003	-.020	-.030	-.084	-.014	-.002	.006	-.015	.008	-.010	-.010	.035	-.028	.004	.016	.013	-.016	-.003	-.015	-.005	.016	-.017	
	var2	-.045	.095	.014	.045	.018	.033	.030	-.020	.042	-.016	-.040	-.029	-.026	.011	.039	-.019	-.026	.028	.024	-.040	.041	.024	-.036	.028	
	var5	.003	.014	.081	.009	.022	.049	.045	.006	-.008	.025	-.036	-.005	-.042	-.026	.051	-.059	-.010	-.022	-.026	.032	-.014	.006	.019	-.023	.013
	var6	-.020	.045	.009	.038	.052	-.002	.017	.020	-.014	.034	-.017	-.025	-.015	-.010	.014	.008	-.012	-.025	.031	.016	-.024	.022	.016	-.030	.020
	var10	-.030	.045	.022	.052	.125	-.022	.019	.023	-.018	.053	-.032	-.026	-.030	-.010	.033	-.016	-.014	-.047	.039	.026	-.026	.023	.022	-.044	.031
	var12	-.084	.018	.049	-.002	-.022	.354	.033	-.014	.004	-.015	-.025	.013	.017	.032	-.018	-.033	.001	-.014	-.062	.012	.023	-.008	-.002	-.012	.005
	var13	-.014	.033	.045	.017	.019	.033	.045	.012	-.011	.028	-.025	-.013	-.039	-.032	.034	-.026	-.013	-.020	-.007	.029	-.022	.018	.021	-.028	.019
	var14	-.002	.030	.006	.020	.023	-.014	.012	.017	-.010	.020	-.006	-.019	-.014	-.016	.012	.013	-.009	-.012	.023	.010	-.022	.019	.011	-.016	.012
	var15	.006	-.020	-.008	-.014	-.018	.004	-.011	-.010	.007	-.016	.007	.011	.012	.013	-.010	-.004	.006	.011	-.011	-.010	.014	-.012	-.009	.014	-.010
	var16	-.015	.042	.025	.034	.053	-.015	.028	.020	-.016	.051	-.029	-.022	-.032	-.025	.027	-.004	-.014	-.030	.014	.029	-.029	.024	.022	-.035	.024
	var17	.008	-.016	-.036	-.017	-.032	-.025	-.025	-.006	.007	-.029	.031	.005	.023	.008	-.032	.038	.008	.022	.009	-.022	.009	-.005	-.014	.025	-.014
	var18	.007	-.040	-.005	-.025	-.026	.013	-.013	-.019	.011	-.022	.005	.025	.010	.015	-.008	-.025	.010	.014	-.026	-.010	.025	-.023	-.012	.019	-.014
	var19	-.010	-.029	-.042	-.015	-.030	.017	-.039	-.014	.012	-.032	.023	.010	.075	.053	-.057	.048	.014	.018	-.009	-.030	.028	-.019	-.025	.024	-.021
	var21	-.010	-.026	-.026	-.010	-.010	.032	-.032	-.016	.013	-.025	.008	.015	.053	.081	-.033	.007	.013	.014	-.013	-.030	.035	-.024	-.025	.021	-.025
	var22	.035	.011	.051	.014	.033	-.018	.034	.012	-.010	.027	-.032	-.008	-.057	-.033	.084	-.071	-.012	-.024	.011	.024	-.022	.008	.022	-.032	.017
	var24	-.028	.039	-.059	.008	-.016	-.033	-.026	.013	-.004	.038	-.025	.048	.007	-.071	.174	.000	.014	.024	-.018	-.012	.021	-.010	.013	-.003	-.003
	var25	.004	-.019	-.010	-.012	-.014	.001	-.013	-.009	.006	-.014	.008	.010	.014	.013	-.012	.000	.006	.009	-.008	-.010	.013	-.011	-.009	.012	-.009
	var26	.016	-.026	-.022	-.025	-.047	-.014	-.020	-.012	.011	-.030	.022	.014	.018	.014	-.024	.014	.009	.029	-.014	-.020	.017	-.013	-.016	.030	-.021
	var27	.013	.028	-.026	.031	.039	-.062	-.007	.023	-.011	.014	.009	-.026	-.009	-.013	.011	.024	-.008	-.014	.075	-.004	-.025	.021	.008	-.018	.014
	var28	-.016	.024	.032	.016	.026	.012	.029	.010	-.010	.029	-.022	-.010	-.030	-.030	.024	-.018	-.010	-.020	-.004	.028	-.019	.015	.018	-.024	.019
	var29	-.003	-.040	-.014	-.024	-.026	.023	-.022	-.022	.014	-.029	.009	.025	.028	.035	-.022	-.012	.013	.017	-.025	-.019	.035	-.027	-.019	.023	-.019
	var30	-.015	.041	.006	.022	.023	-.008	.018	.019	-.012	.024	-.005	-.023	-.019	-.024	.008	.021	-.011	-.013	.021	.015	-.027	.026	.014	-.018	.017
	var32	-.005	.024	.019	.016	.022	-.002	.021	.011	-.009	.022	-.014	-.012	-.025	-.025	.022	-.010	-.009	-.016	.008	.018	-.019	.014	.015	-.021	.016
	var33	.016	-.036	-.023	-.030	-.044	-.012	-.028	-.016	.014	-.035	.025	.019	.024	.021	-.032	.013	.012	.030	-.018	-.024	.023	-.018	-.021	.040	-.025
	var34	-.017	.028	.013	.020	.031	.005	.019	.012	-.010	.024	-.014	-.014	-.021	-.025	.017	-.003	-.009	-.021	.014	.019	-.019	.017	.016	-.025	.021
Anti-image Correlation	var1	.618 ^a	-.444	.033	-.312	-.260	-.429	-.207	-.042	.231	-.199	.146	.132	-.114	-.108	.371	-.206	.159	.284	.147	-.286	-.044	-.280	-.125	.250	-.351
	var2	-.444	.207 ^a	.159	.747	.409	.099	.512	.753	-.791	.599	-.289	-.815	-.347	-.297	.120	.299	-.791	-.485	.332	.465	-.687	.822	.632	-.587	.631
	var5	.033	.159	.298 ^a	.169	.215	.289	.747	.154	-.318	.387	-.728	-.101	-.535	-.320	.621	-.499	-.471	-.447	-.336	.682	-.266	.129	.531	-.407	.319
	var6	-.312	.747	.169	.162 ^a	.756	-.019	.412	.784	-.839	.764	-.491	-.806	-.287	-.178	.242	.096	-.778	-.765	.574	.484	-.643	.698	.667	-.776	.728
	var10	-.260	.409	.215	.756	.236 ^a	-.107	.259	.508	-.622	.668	-.521	-.465	-.307	-.101	.326	-.107	-.514	-.786	.405	.444	-.388	.404	.507	-.628	.602
	var12	-.429	.099	.289	-.019	-.107	.545 ^a	.262	-.180	.074	-.114	-.239	.138	.107	.188	-.102	-.131	.025	-.136	-.380	.116	-.209	-.082	-.021	-.099	.059
	var13	-.207	.512	.747	.412	.259	.262	.298 ^a	.438	-.650	.590	-.668	-.399	-.674	-.530	.557	-.298	-.775	-.567	-.118	.824	-.560	.535	.793	-.657	.640
	var14	-.042	.753	.154	.784	.508	-.180	.438	.206 ^a	-.912	.679	-.252	-.937	-.408	-.426	.330	.235	-.864	-.565	.642	.449	-.914	.900	.700	-.626	.670
	var15	.231	-.791	-.318	-.839	-.622	.074	-.650	-.912	.183 ^a	-.831	.474	.866	.526	.558	-.392	-.113	.947	.759	-.471	-.722	.895	-.900	-.880	.807	-.873
	var16	-.199	.599	.387	.764	.668	-.114	.590	.679	-.831	.235 ^a	-.717	-.616	-.509	-.382	.416	-.045	-.801	-.771	.219	.756	-.682	.647	.792	-.768	.733
	var17	.146	-.289	-.728	-.491	-.521	-.239	-.668	-.252	.474	-.717	.227 ^a	.174	.487	.152	-.630	.514	.548	.741	.179	-.748	.277	-.185	-.657	.714	-.544
	var18	.132	-.815	-.101	-.806	-.465	.138	-.399	-.937	.866	-.616	.174	.142 ^a	.240	.322	-.168	-.385	.821	.502	-.598	-.375	.840	-.882	-.628	.592	-.607
	var19	-.114	-.347	-.535	-.287	-.307	.107	-.674	-.408	.526	-.509	.487	.240	.282 ^a	.687	-.719	.417	.662	.384	-.125	-.662	.551	-.420	-.729	.445	-.533
	var21	-.108	-.297	-.320	-.178	-.101	.188	-.530	-.426	.558	-.382	.152	.322	.687	.295 ^a	-.401	.058	.590	.289	-.166	-.631	.653	-.528	-.694	.370	-.621
	var22	.371	.120	.621	.242	.326	-.102	.557	.330	-.392	.416	-.630	-.168	-.719	-.401	.277 ^a	-.583	-.509	-.478	.133	.491	-.406	.165	.608	-.554	.415
	var24	-.206	.299	-.499	.096	-.107	-.131	-.298	.235	-.113	-.045	.514	-.385	.417	.058	-.583	.502 ^a	-.013	.203	.212	-.252	-.158	.318	-.189	.157	-.051
	var25	.159	-.791	-.471	-.778	-.514	.025	-.775	-.864	.947	-.801	.548	.821	.662	.590	-.509	-.013	.216 ^a	.682	-.383	-.767	.893	-.867	-.918	.783	-.816
	var26	.284	-.485	-.447	-.765	-.786	-.136	-.567	-.565	.759	-.771	.741	.502	.384	.289	-.478	.203	.682	.259 ^a	-.304	-.716	.525	-.485	-.754	.887	-.845
	var27	.147	.332	-.336	.574	.405	-.380	-.118	.642	-.471	.219	.179	-.598	-.125	-.166	.133	.212	-.383	-.304	.390 ^a	-.088	-.494	.468	.248	-.328	.364
	var28	-.286	.465	.682	.484	.444	.116	.824	.449	-.722	.756	-.748	-.375	-.662	-.631	.491	-.252	-.767	-.716	-.088	.162 ^a	-.596	.537	.883	-.714	.784
	var29	-.044	-.687	-.266	-.643	-.388	.209	-.560	-.914	.895	-.682	.277	.840	.551	.653	-.406	-.158	.893	.525	-.494	-.596	.106 ^a	-.902	-.796	-.713	
	var30	-.280	.822	.129	.698	.404	-.082	.535	.90																	

Anti-image Matrices

	var1	var2	var5	var6	var10	var12	var13	var14	var15	var16	var17	var19	var21	var22	var24	var25	var26	var27	var28	var29	var30	var32	var33	var34	
Anti-image Covariance	var1	,110	-,103	,004	-,038	-,030	-,091	-,013	,029	,013	-,014	,007	-,014	-,016	,039	-,025	,004	,017	,032	-,015	-,033	-,040	-,003	,018	-,021
	var2	-,103	,283	,020	,046	,012	,118	,043	-,010	-,026	,032	-,024	-,040	-,010	-,005	-,007	-,027	-,016	-,061	,029	-,001	,069	,023	-,030	,029
	var5	,004	,020	,082	,014	,022	,053	,051	,018	-,022	,034	-,037	-,043	-,026	,052	-,076	-,027	-,026	-,048	,036	-,033	,008	,028	-,031	,017
	var6	-,038	,046	,014	,109	,096	,031	,013	,017	-,026	,054	-,036	-,015	,014	,018	-,059	-,016	-,046	,022	,020	,012	-,005	,018	-,051	,030
	var10	-,030	,012	,022	,096	,159	-,012	,008	,034	-,033	,063	-,036	-,026	,007	,033	-,063	-,014	-,057	,024	,024	,001	-,002	,020	-,049	,033
	var12	-,091	,118	,053	,031	-,012	,361	,048	-,032	-,009	-,006	-,029	,013	,028	-,014	-,023	-,013	-,028	-,077	,020	,036	,017	,008	-,034	,020
	var13	-,013	,043	,051	,013	,008	,048	,053	,017	-,026	,032	-,027	-,042	-,032	,037	-,056	-,027	-,021	-,038	,033	-,036	,033	,028	-,033	,023
	var14	,029	-,010	,018	,017	,034	-,032	,017	,136	-,035	,039	-,017	-,056	-,042	,054	-,065	-,024	-,023	,036	,020	-,085	,057	,024	-,023	,024
	var15	,013	-,026	-,022	-,026	-,033	-,009	-,026	-,035	,028	-,036	,020	,031	,030	-,025	,036	,019	,025	,007	-,026	,036	-,033	-,023	,030	-,026
	var16	-,014	,032	,034	,054	,063	-,006	,032	,039	-,036	,083	-,040	-,038	-,021	,034	-,051	-,026	-,039	-,023	,037	-,038	,028	,030	-,045	,030
	var17	,007	-,024	-,037	-,036	-,029	-,027	-,017	,020	-,040	,032	,023	,006	-,033	,052	,018	,027	,022	-,024	,015	-,004	-,020	,034	-,018	-,018
	var19	-,014	-,040	-,043	-,015	-,026	,013	-,042	-,056	,031	-,038	,023	,079	,056	-,059	,072	,032	,017	,002	-,032	,065	-,044	-,034	,027	-,026
	var21	-,016	-,010	-,026	,014	,007	,028	-,032	-,042	,030	-,021	,006	,056	,091	-,033	,028	,025	,009	,004	-,032	,078	-,056	-,032	,018	-,031
	var22	,039	-,005	,052	,018	,033	-,014	,037	,054	-,025	,034	-,033	-,059	-,033	,087	-,095	-,027	-,027	,004	,025	-,051	,004	,031	-,042	,021
	var24	-,025	-,007	-,076	-,059	-,063	-,023	-,056	-,065	,036	-,051	,052	,072	,028	-,095	,205	,036	,044	-,004	-,038	,052	-,008	-,043	,058	-,032
	var25	,004	-,027	-,027	-,016	-,014	-,013	-,027	-,024	,019	-,026	,018	,032	,025	-,027	,036	,019	,015	,011	-,021	,031	-,025	-,020	,022	-,017
	var26	,017	-,016	-,026	-,046	-,057	-,028	-,021	-,023	,025	-,039	,027	,017	,009	-,027	,044	,015	,039	,000	-,023	,015	-,007	-,021	,041	-,028
	var27	,032	-,061	-,048	,022	,024	-,077	-,038	,036	,007	-,023	,022	,002	,004	-,004	,011	,000	,116	-,026	,002	-,018	-,011	,003	7,493E-005	
	var28	-,015	,029	,036	,020	,024	,020	,033	,020	-,026	,037	-,024	-,032	,025	-,038	-,021	-,023	-,026	,033	-,035	,029	,026	-,030	,020	,025
	var29	-,033	-,001	-,033	,012	,001	,036	-,036	-,085	,036	-,038	,015	,065	,078	-,051	,052	,031	,015	,002	-,035	,120	-,075	-,035	,020	-,030
	var30	-,040	,069	,008	-,005	-,002	,017	,033	,057	-,033	,028	-,004	-,044	-,056	,004	-,008	-,025	-,007	-,018	,029	-,075	,117	,022	-,011	,030
	var32	-,003	,023	,028	,018	,020	,008	,028	,024	-,023	,030	-,020	-,034	-,032	,031	-,043	-,020	-,021	-,011	,026	-,035	,022	,025	-,029	,023
	var33	,018	-,030	-,031	-,051	-,049	-,034	-,033	-,023	,030	-,045	,034	,027	,018	-,042	,058	,022	,041	,003	-,030	,020	-,011	-,029	,062	-,037
	var34	-,021	,029	,017	,030	,033	,020	,023	,024	-,026	,030	-,018	-,026	-,031	,021	-,032	-,017	7,493E-005	,025	-,030	,030	,023	-,037	,033	
Anti-image Correlation	var1	,563 ^a	-,586	,047	-,351	-,227	-,456	-,170	,237	,234	-,151	,126	-,152	-,160	,402	-,169	,089	,254	,285	-,258	-,288	-,350	-,055	,215	-,344
	var2	-,586	,518 ^a	,133	,264	,059	,368	,352	-,052	-,294	,212	-,257	-,270	-,064	-,029	-,028	-,370	-,151	-,335	,297	-,008	,380	,267	-,223	,297
	var5	,047	,133	,247 ^a	,148	,191	,307	,774	,171	-,462	,414	-,725	-,529	-,305	,615	-,586	-,683	-,461	-,497	,699	-,336	,086	,604	-,433	,326
	var6	-,351	,264	,148	,308 ^a	,728	,158	,167	,137	-,476	,573	-,603	-,164	,145	,182	-,393	-,345	-,705	,192	,330	,109	-,046	,348	-,627	,508
	var10	-,227	,059	,191	,728	,348 ^a	-,049	,091	,233	-,496	,547	-,505	-,228	,058	,283	-,351	-,263	-,722	-,179	,328	,004	-,013	,313	-,494	,455
	var12	-,456	,368	,307	,158	-,049	,462 ^a	,349	-,147	-,091	-,037	-,270	,077	,153	-,081	-,086	-,156	-,240	-,375	,183	,174	,084	,085	-,226	,181
	var13	-,170	,352	,774	,167	,091	,349	,324 ^a	,199	-,663	,476	-,663	-,650	-,463	,542	-,534	-,854	-,462	-,486	,793	-,452	,424	,760	-,570	,546
	var14	,237	-,052	,171	,137	,233	-,147	,199	,420 ^a	-,576	,367	-,258	-,542	-,378	,500	-,392	-,478	-,311	,289	,300	-,667	,449	,408	-,254	,365
	var15	,234	-,294	-,462	-,476	-,496	-,091	-,663	-,576	,231 ^a	-,754	,656	,655	,589	-,498	,477	,827	,749	,117	-,856	,619	-,577	-,863	,731	-,873
	var16	-,151	,212	,414	,573	,547	-,037	,476	,367	-,754	,321 ^a	-,787	-,473	-,247	,402	-,389	-,656	-,678	-,238	,718	-,385	,280	,661	-,635	,573
	var17	,126	-,257	-,725	-,603	-,505	-,270	-,663	-,258	,656	-,787	,193 ^a	,466	,103	-,619	,639	,721	,768	,359	-,747	,245	-,069	-,715	,770	-,560
	var19	-,152	-,270	-,529	-,164	-,228	,077	-,650	-,542	,655	-,473	,466	,248 ^a	,663	-,709	,569	,839	,314	,024	-,636	,664	-,455	-,766	,388	-,502
	var21	-,160	-,064	-,305	,145	,058	,153	-,463	-,378	,589	-,247	,103	,663	,318 ^a	-,371	,208	,603	,156	,035	-,582	,746	-,547	-,668	,235	-,565
	var22	,402	-,029	,615	,182	,283	-,081	,542	,500	-,498	,402	-,619	-,709	-,371	,257 ^a	-,712	-,659	-,461	,041	,468	-,496	,036	,655	-,571	,400
	var24	-,169	-,028	-,586	-,393	-,351	-,086	-,534	-,392	,477	-,389	,639	,569	,208	-,712	,284 ^a	,575	,497	-,025	-,463	,332	-,049	-,601	,518	-,388
	var25	,089	-,370	-,683	-,345	-,263	-,156	-,854	-,478	,827	-,656	,721	,839	,603	-,659	,575	,265 ^a	,546	,236	-,866	,656	-,532	-,905	,644	-,699
	var26	,254	-,151	-,461	-,705	-,722	-,240	-,462	-,311	,749	-,678	,768	,314	,156	-,461	,497	,546	,314 ^a	-,005	-,658	,219	-,104	-,652	,847	-,785
	var27	,285	-,335	-,497	,192	,179	-,375	-,486	,289	,117	-,238	,359	,024	,035	,041	-,025	,236	-,005	,571 ^a	-,421	,020	-,158	-,206	,041	,001
	var28	-,258	,297	,699	,330	,328	,183	,793	,300	-,856	,718	-,747	-,636	-,582	,468	-,463	-,866	-,658	-,421	,167 ^a	-,559	,473	,898	-,659	,755
	var29	-,288	-,008	-,336	,109	,004	,174	-,452	-,667	,619	-,385	,245	,664	,746	-,496	,332	,656	,219	,020	-,559	,187 ^a	-,630	-,635	,238	-,471
	var30	-,350	,380	,086	-,046	-,013	,084	,424	,449	-,577	,280	-,069	-,455	-,547	,036	-,049	-,532	-,104	-,158	,473	-,630	,333 ^a	,401	-,125	,477
	var32	-,055	,267	,604	,348	,313	,085	,760	,408	-,863	,661	-,715	-,766	-,668	,655	-,601	-,905	-,652	-,206	,898	-,635	,401	,240 ^a	-,742	,804
	var33	,215	-,223	-,433	-,627	-,494	-,226	-,570	-,254	,731	-,635	,770	,388	,235	-,571	,518	,644	,847	,041	-,659	,238	-,125	-,742	,192 ^a	-,824
	var34	-,344	,297	,326	,508	,455	,181	,546	,365	-,873	,573	-,560	-,502	-,565	,400	-,388	-,699	-,785	,001	,755	-,471	,477	,804	-,824	,283 ^a

Anti-image Matrices

	var1	var2	var5	var6	var10	var12	var13	var14	var15	var16	var17	var19	var21	var22	var24	var25	var26	var27	var29	var30	var32	var33	var34	
Anti-image Covariance	var1	,118	-,106	,045	-,035	-,023	-,090	,008	,045	,003	,007	-,010	-,053	-,050	,070	-,059	-,026	,010	,026	-,077	-,036	,052	,007	-,022
	var2	-,106	,311	-,024	-,036	-,010	,114	,042	-,033	-,014	,000	-,008	-,022	,029	-,037	-,036	,009	-,051	,047	,062	,000	-,007	-,018	,012
	var5	,045	-,024	,159	-,017	-,010	,062	,076	-,009	,047	-,029	-,046	-,022	,026	,061	-,084	-,024	,000	-,047	,015	-,060	-,010	,007	-,047
	var6	-,035	,036	-,017	,122	,102	,022	-,022	,006	-,045	,074	-,053	,008	,057	,004	-,051	-,012	-,063	,051	,055	-,033	,016	-,067	,040
	var10	-,023	-,010	-,010	,102	,178	-,030	-,047	,024	-,060	,083	-,047	-,004	,051	,022	-,051	,005	-,079	,059	,042	-,033	,007	-,055	,039
	var12	-,090	,114	,062	,022	-,030	,373	,079	-,051	-,062	-,034	-,057	,073	-,039	,000	,001	-,026	-,077	,057	,086	-,001	-,040	-,029	,011
	var13	,008	,042	,076	-,022	-,047	,079	,144	-,010	,006	-,035	-,018	-,043	,000	,040	-,060	-,057	,013	-,039	-,003	,014	,024	-,013	-,014
	var14	,045	-,033	-,009	,006	,024	-,051	-,010	,149	-,080	,037	-,006	-,067	-,037	,055	-,059	-,048	-,016	,070	-,102	,055	,046	-,010	,024
	var15	,003	-,014	,047	-,045	-,060	,025	,006	-,080	,104	-,052	,004	,033	,026	-,023	,029	,029	,040	-,063	,044	-,047	-,049	,046	-,059
	var16	,007	,000	-,029	,074	,083	-,062	-,035	,037	-,052	,171	-,060	,083	-,062	,046	-,015	-,019	-,042	-,005	,005	-,016	,008	-,042	,008
	var17	-,010	-,008	-,046	-,053	-,047	-,034	-,018	-,006	,004	-,060	,072	-,002	-,061	-,041	,068	,016	,039	,007	-,035	,051	-,015	,049	,001
	var19	-,053	-,022	-,022	,008	-,004	,057	-,043	-,067	,033	-,005	-,002	,133	,063	-,073	,075	,074	-,017	-,048	,073	-,032	-,076	-,006	-,004
	var21	-,050	,029	,026	,057	,051	,073	,000	-,037	,026	,046	-,061	,063	,137	-,017	-,016	,025	-,036	-,040	,096	-,055	-,055	-,030	-,024
	var22	,070	-,037	,061	,004	,022	-,039	,040	,055	-,023	,015	-,041	-,023	-,041	-,011	-,108	-,052	-,020	,037	-,073	-,045	,111	,073	-,044
	var24	-,059	,037	-,084	-,051	-,051	,000	-,060	-,059	,029	-,019	,068	,075	-,016	-,108	,261	,055	,039	-,052	,021	,043	-,088	,054	-,009
	var25	-,026	-,036	-,024	-,012	,005	,001	-,057	-,048	,029	-,011	,016	,074	,025	-,052	,055	,075	-,004	-,029	,047	-,030	-,057	,018	-,010
	var26	,010	,009	,000	-,063	-,079	-,026	,013	-,016	,040	-,042	,039	-,017	-,036	-,020	,039	-,004	,069	-,041	-,026	,032	-,018	,063	-,042
	var27	,026	-,051	-,047	,051	,059	-,077	-,039	,070	-,063	,016	,007	-,074	-,039	-,037	-,052	-,029	-,041	,141	-,045	,040	,007	,059	-,043
	var29	-,077	,047	,015	,055	,042	,086	-,003	-,102	,044	,005	-,035	,073	,096	-,045	,021	,047	-,026	-,045	,175	-,081	-,055	-,029	-,010
	var30	-,036	,062	-,060	-,033	-,033	-,001	,014	,055	-,047	-,016	,051	-,032	-,055	-,031	,043	-,030	,032	,007	-,081	,151	-,008	,036	,022
	var32	,052	,000	-,010	,016	,007	-,040	,024	,046	-,049	,008	-,015	-,076	-,055	,073	-,088	-,057	-,018	,059	-,055	-,008	,131	-,054	,044
	var33	,007	-,007	,007	-,067	-,055	-,029	-,013	-,010	,046	-,042	,049	-,076	-,029	-,044	,054	,018	,063	-,043	-,006	,036	-,054	,109	-,060
	var34	-,022	,018	-,047	,040	,039	,011	-,014	,024	-,059	,008	-,001	-,004	-,024	,007	-,009	-,010	-,042	,056	-,010	,022	,044	-,060	,076
Anti-image Correlation	var1	,457 ^a	-,552	,329	-,292	-,156	-,430	,059	,341	,027	,051	-,103	-,423	-,395	,612	-,337	-,278	,117	,201	-,539	-,268	,415	,062	-,236
	var2	-,552	,650 ^a	-,108	,184	-,043	,335	,200	-,155	-,080	-,002	-,056	-,110	,140	-,199	,129	-,237	,062	-,242	,200	,285	,001	-,039	,116
	var5	,329	-,108	,474 ^a	-,122	-,057	,255	,505	-,056	,366	-,177	-,057	-,154	,173	,456	-,413	-,092	-,314	,092	-,388	-,072	,051	-,430	-,430
	var6	-,292	,184	-,122	,327 ^a	,695	,105	-,166	,042	-,397	,511	-,568	,063	,440	,033	-,287	-,124	-,685	,387	,375	-,243	,123	-,577	,417
	var10	-,156	-,043	-,057	,695	,394 ^a	-,117	-,295	,149	-,440	,474	-,413	-,026	,324	,156	-,237	,045	-,711	,370	,240	-,202	,043	-,391	,334
	var12	-,430	,335	,255	,105	-,117	,426 ^a	,341	-,215	,129	-,246	-,204	,254	,325	-,192	-,001	,005	-,161	-,334	,338	-,003	-,183	-,143	,067
	var13	,059	,200	,505	-,166	-,295	,341	,695 ^a	-,067	,049	-,221	-,174	-,309	-,003	,318	-,308	-,547	,130	-,275	-,309	-,003	,092	,178	-,102
	var14	,341	-,155	-,056	,042	,149	-,215	-,067	,466 ^a	-,646	,228	-,054	-,477	-,262	,426	-,299	-,457	-,158	,480	-,632	,366	,329	-,079	,221
	var15	,027	-,080	,366	-,397	-,440	,129	,049	-,646	,450 ^a	-,387	,049	,279	,217	-,215	,175	,332	,478	-,518	,328	-,379	-,418	,429	-,667
	var16	,051	-,002	-,177	,511	,474	-,246	-,221	,228	-,387	,644 ^a	-,541	-,030	,303	,107	-,091	-,096	-,391	,102	,029	-,098	,053	-,308	,067
	var17	-,103	-,056	-,427	-,568	-,413	-,204	-,174	-,054	,049	-,541	,353 ^a	-,019	-,614	-,459	,497	,221	,552	,073	-,019	-,313	,486	-,151	,555
	var19	-,423	-,110	-,154	,063	-,026	,254	-,309	-,477	,279	-,030	-,019	,420 ^a	,467	-,603	,400	,746	-,179	-,348	,482	-,227	-,575	-,054	-,042
	var21	-,395	,140	,173	,440	,324	,325	-,003	-,262	,217	,303	-,614	,467	,418 ^a	-,138	-,085	,243	-,371	-,284	,624	-,379	-,408	-,242	-,236
	var22	,612	-,199	,456	-,033	,156	-,192	,318	,426	-,215	,107	-,459	-,603	-,138	,341 ^a	-,632	-,574	-,230	,297	-,320	-,238	,603	-,396	,080
	var24	-,337	,129	-,413	-,287	-,237	-,001	-,308	-,299	,175	-,091	,497	,400	-,085	-,632	,447 ^a	,393	,288	-,274	,099	,218	-,474	,319	-,065
	var25	-,278	-,237	-,218	-,124	,045	,005	-,547	-,457	,332	-,096	,221	,746	,243	-,574	,393	,535 ^a	-,062	-,284	,415	-,278	-,579	,196	-,138
	var26	,117	,062	-,002	-,685	-,711	-,161	,130	-,158	,478	-,391	,552	-,179	-,371	-,230	,288	-,062	,468 ^a	-,412	-,238	,312	-,185	,729	-,584
	var27	,201	-,242	-,314	,387	-,370	-,334	-,275	,480	-,518	,102	,073	-,348	-,284	,297	-,274	-,284	-,412	,441 ^a	-,285	,051	,431	-,347	,537
	var29	-,539	,200	,092	,375	,240	,338	-,017	-,632	,328	,029	-,313	,482	,624	-,320	,099	,415	-,238	-,285	,275 ^a	-,501	-,365	-,209	-,091
	var30	-,268	,285	-,388	-,243	-,202	-,003	,092	,366	-,379	-,098	,486	-,227	-,379	-,238	,218	-,278	,312	,051	-,501	,449 ^a	-,060	,281	,209
	var32	,415	,001	-,072	,123	,043	-,183	,178	,329	-,418	,053	-,151	-,575	-,408	,603	-,474	-,579	,431	-,365	-,060	,499 ^a	-,453	,436	-,436
	var33	,062	-,039	,051	-,577	-,391	-,143	-,102	-,079	,429	-,308	,555	-,054	-,242	-,396	,319	,196	,729	-,347	-,209	,281	-,453	,350 ^a	-,662
	var34	-,236	,116	-,430	,417	,334	,067	-,134	,221	-,667	,067	-,011	-,042	-,236	,080	-,065	-,138	-,584	,537	-,091	,209	,436	-,662	,526 ^a

a. Measures of Sampling Adequacy(MSA)

Anti-image Matrices

	var1	var2	var5	var6	var10	var12	var13	var14	var15	var16	var17	var19	var21	var22	var24	var25	var26	var27	var30	var32	var33	var34	
Anti-image Covariance	var1	,166	-,125	,074	-,018	-,006	-,083	,009	,000	,036	,013	-,039	-,037	-,017	,079	-,071	-,009	-,002	,009	-,135	,044	-,009	-,038
	var2	-,125	,323	-,030	,026	-,024	,107	,045	-,011	-,031	-,002	,001	-,057	,005	-,029	,033	-,061	,018	-,044	,116	,018	,001	,022
	var5	,074	-,030	,161	-,026	-,014	,062	,077	,000	,049	-,030	-,048	-,038	,028	-,073	-,088	-,034	,002	-,047	-,071	-,006	,010	-,047
	var6	-,018	,026	-,026	,142	,110	-,006	-,025	,073	-,076	,084	-,055	-,023	,051	,023	-,068	-,038	-,067	,082	-,012	,044	-,070	,051
	var10	-,006	-,024	-,014	,110	,189	-,061	-,049	,086	-,084	,087	-,045	-,030	,047	,039	-,060	-,008	-,081	,080	-,019	,024	-,053	,044
	var12	-,083	,107	,062	-,006	-,061	,422	,091	-,001	,004	-,073	-,020	,030	,048	-,021	-,012	-,031	-,015	-,067	,060	-,017	-,017	,019
	var13	,009	,045	,077	-,025	-,049	,091	,144	-,019	,008	-,035	-,020	-,054	,002	,044	-,060	-,068	,013	-,043	,016	,027	-,014	-,014
	var14	,000	-,011	,000	,073	,086	-,001	-,019	,248	-,102	,066	-,048	-,053	,052	,053	-,078	-,041	-,055	,079	,016	,027	-,047	,029
	var15	,036	-,031	,049	-,076	-,084	,004	,008	-,102	,117	-,059	,016	,021	,003	-,015	,026	,023	,056	-,063	-,040	-,045	,062	-,064
	var16	,013	-,002	-,030	,084	,087	-,073	-,035	,066	-,059	,172	-,066	-,009	,071	,018	-,020	-,015	-,044	,019	-,018	,011	-,043	,008
	var17	-,039	,001	-,048	-,055	-,045	-,020	-,020	-,048	,016	-,066	,080	,019	-,076	-,062	,081	,035	,040	-,002	,051	-,033	,050	-,001
	var19	-,037	-,057	-,038	-,023	-,030	,030	-,054	-,053	,021	-,009	,019	,173	,048	-,079	,086	,086	-,009	-,041	,004	-,079	,008	,000
	var21	-,017	,005	,028	,051	,047	,048	,002	,052	,003	,071	-,076	,048	,224	,014	-,046	-,003	-,037	-,026	-,021	-,046	-,023	-,030
	var22	,079	-,029	,073	,023	,039	-,021	,044	,053	-,015	,018	-,062	-,079	,014	,124	-,115	-,054	-,032	,031	-,077	,075	-,059	,005
	var24	-,071	,033	-,088	-,068	-,060	-,012	-,060	-,078	,026	-,020	,081	,086	-,046	-,115	,263	,060	,045	-,052	,072	-,094	,060	-,008
	var25	-,009	-,061	-,034	-,038	-,008	-,031	-,068	-,041	,023	-,015	,035	,086	-,003	-,054	,060	,091	,003	-,022	-,012	-,059	,032	-,009
	var26	-,002	,018	,002	-,067	-,081	-,015	,013	-,055	,056	-,044	,040	-,009	-,037	-,032	,045	,003	,073	-,054	,028	-,032	,065	-,047
	var27	,009	-,044	-,047	,082	,080	-,067	-,043	,079	-,063	,019	-,002	-,041	-,026	,031	-,052	-,022	-,054	,154	-,019	,056	-,057	,058
	var30	-,135	,116	-,071	-,012	-,019	,060	,016	,016	-,040	-,018	,051	,004	-,021	-,077	,072	-,012	,028	-,019	,201	-,052	,032	,023
	var32	,044	,018	-,006	,044	,024	-,017	,027	-,045	,011	-,033	-,079	-,046	,075	-,094	-,059	-,032	,056	-,052	,151	-,076	,047	,047
	var33	-,009	,001	,010	-,070	-,053	-,017	-,014	-,047	,062	-,043	,050	,008	-,023	-,059	,060	,032	,065	-,057	,032	-,076	,114	-,065
	var34	-,038	,022	-,047	,051	,044	,019	-,014	,029	-,064	,008	-,001	,000	-,030	,005	-,008	-,009	-,047	,058	,023	,047	-,065	,077
Anti-image Correlation	var1	,466 ^a	-,539	,451	-,115	-,032	-,313	,059	,001	,257	,079	-,340	-,221	-,089	,551	-,339	-,071	-,014	,059	-,739	,279	-,062	-,340
	var2	-,539	,621 ^a	-,130	,120	-,095	,290	,207	-,038	-,158	-,008	,007	-,240	,020	-,146	,112	-,359	,115	-,197	,454	,081	,003	,137
	var5	,451	-,130	,445 ^a	-,169	-,082	,239	,509	,002	,357	-,180	-,421	-,227	,149	,515	-,426	-,282	,020	-,301	-,396	-,041	,072	-,425
	var6	-,115	,120	-,169	,306 ^a	,672	-,025	-,173	,389	-,594	,540	-,511	-,145	,284	,175	-,351	-,331	-,662	,556	-,069	,301	-,550	,489
	var10	-,032	-,095	-,082	,672	,371 ^a	-,217	-,300	,399	-,566	,482	-,367	-,167	,230	,253	-,270	-,061	-,693	,471	-,098	,144	-,359	,368
	var12	-,313	,290	,239	-,025	-,217	,549 ^a	,369	-,002	,020	-,272	-,110	,110	,155	-,094	-,037	-,158	-,088	-,264	,205	-,068	-,079	,104
	var13	,059	,207	,509	-,173	-,300	,369	,674 ^a	-,100	,058	-,221	-,189	-,344	,010	,330	-,308	-,594	,130	-,292	,096	,184	-,108	-,136
	var14	,001	-,038	,002	,389	,399	-,002	-,100	,533 ^a	-,599	,318	-,342	-,254	,219	,305	-,306	-,277	-,410	,404	,137	-,278	-,212	,212
	var15	,257	-,158	,357	-,594	-,566	,020	,058	-,599	,432 ^a	-,419	,169	,145	,017	-,123	,151	,228	,606	-,468	-,262	-,339	-,538	-,678
	var16	,079	-,008	-,180	,540	,482	-,272	-,221	,318	-,419	,608 ^a	-,561	-,050	,365	,123	-,094	-,119	-,396	,115	-,096	,068	-,309	,070
	var17	-,340	,007	-,421	-,511	-,367	-,110	-,189	-,342	,169	-,561	,322 ^a	,159	-,564	-,622	,559	,406	,517	-,018	,400	-,300	,527	-,018
	var19	-,221	-,240	-,227	-,145	-,167	,110	-,344	-,254	,145	-,050	,159	,525 ^a	,243	-,541	,405	,685	-,076	-,251	,019	-,490	,055	,002
	var21	-,089	,020	,149	,284	,230	,155	,010	,219	,017	,365	-,564	,243	,636 ^a	,083	-,189	-,022	-,293	-,142	-,099	-,248	-,146	-,231
	var22	,551	-,146	,515	,175	,253	-,094	,330	,305	-,123	,123	-,622	-,541	,083	,331 ^a	-,637	-,512	-,333	,227	-,485	,551	-,499	,054
	var24	-,339	,112	-,426	-,351	-,270	-,037	-,308	-,306	,151	-,094	,559	,405	-,189	-,637	,422 ^a	,388	,322	-,257	,311	-,472	,349	-,057
	var25	-,071	-,359	-,282	-,331	-,061	-,158	-,594	-,277	,228	-,119	,406	,685	-,022	-,512	,388	,574 ^a	,041	-,189	-,090	-,505	,317	-,110
	var26	-,014	,115	,020	-,662	-,693	-,088	,130	-,410	,606	-,396	,517	-,076	-,293	-,333	,322	,041	,449 ^a	-,515	,230	-,301	,715	-,626
	var27	,059	-,197	-,301	,556	,471	-,264	-,292	,404	-,468	,115	-,018	-,251	-,142	,227	-,257	-,189	-,515	,455 ^a	-,111	,366	-,434	,535
	var30	-,739	,454	-,396	-,069	-,098	,205	,096	,074	-,262	-,096	,400	,019	-,099	-,485	,311	-,090	,230	-,111	,407 ^a	-,301	,208	,189
	var32	,279	,081	-,041	,301	,144	-,068	,184	,137	-,339	,068	-,300	-,490	-,248	,551	-,472	-,505	-,301	,366	-,301	,530 ^a	-,581	,434
	var33	-,062	,003	,072	-,550	-,359	-,079	-,108	-,278	,538	-,309	,527	,055	-,146	-,499	,349	,317	,715	-,434	,208	-,581	,317 ^a	-,699
	var34	-,340	,137	-,425	,489	,368	,104	-,136	,212	-,678	,070	-,018	,002	-,231	,054	-,057	-,110	-,626	,535	,189	,434	-,699	,499 ^a

a. Measures of Sampling Adequacy(MSA)

Anti-image Matrices

	var1	var2	var5	var10	var12	var13	var14	var15	var16	var17	var19	var21	var22	var24	var25	var26	var27	var30	var32	var33	var34	
Anti-image Covariance	var1	,168	-,125	,073	,015	-,085	,006	,011	,041	,034	-,063	-,042	-,012	,085	-,092	-,015	-,018	,029	-,139	,055	-,025	-,043
	var2	-,125	,328	-,026	-,080	,110	,051	-,029	-,026	-,024	,015	-,055	-,004	-,035	,052	-,062	,054	-,086	,120	,011	,019	,017
	var5	,073	-,026	,165	,011	,063	,077	,016	,056	-,021	-,080	,042	,082	-,117	-,047	-,018	-,048	-,076	,002	-,004	-,051	
	var10	,015	-,080	,011	,345	-,103	-,057	,064	-,070	,055	-,007	-,023	,016	,039	-,016	,043	-,095	,044	-,019	-,020	,004	,011
	var12	-,085	,110	,063	-,103	,422	,093	,003	,002	-,098	-,031	,029	,054	-,021	-,017	-,037	-,033	-,092	,059	-,017	-,029	,027
	var13	,006	,051	,077	-,057	,093	,148	-,007	-,009	-,029	-,042	-,061	,012	,051	-,084	-,086	,003	-,043	,015	,039	-,038	-,007
	var14	,011	-,029	,016	,064	,003	-,007	,292	-,114	,037	-,032	-,049	,033	,051	-,058	-,029	-,043	,063	,026	,005	-,018	,005
	var15	,041	-,026	,056	-,070	,002	-,009	-,114	,180	-,030	-,027	,013	,050	-,004	-,018	,006	,054	-,041	-,072	-,036	,054	-,074
	var16	,034	-,024	-,021	,055	-,098	-,029	,037	-,030	,242	-,064	,007	,064	,006	-,033	,012	-,011	-,061	-,016	-,024	-,003	-,041
	var17	-,063	,015	-,080	-,007	-,031	-,042	-,032	-,027	-,064	,109	,014	-,083	-,074	,085	,031	,033	,058	,063	-,024	,046	,032
	var19	-,042	-,055	-,044	-,023	,029	-,061	-,049	,013	,007	,014	,177	,062	-,079	,088	,092	-,035	-,041	,002	-,081	-,005	,011
	var21	-,012	-,004	,042	,016	,054	,012	,033	,050	,064	-,083	,062	,244	,006	-,027	,013	-,026	-,088	-,018	-,073	,002	-,069
	var22	,085	-,035	,082	,039	-,021	,051	-,004	,006	-,074	-,079	,006	,128	-,122	-,056	-,038	,027	-,077	,077	-,071	-,004	
	var24	-,092	,052	-,117	-,016	-,017	-,084	-,058	-,018	,033	,085	,088	-,027	-,122	,300	,054	,025	-,021	,076	-,092	,044	,025
	var25	-,015	-,062	-,047	,043	-,037	-,086	-,029	,006	,012	,031	,092	,013	-,056	,054	,102	-,029	-,001	-,017	-,058	,022	,006
	var26	-,018	,054	-,018	-,095	-,033	,003	-,043	,054	-,011	,033	-,035	-,026	-,038	,025	-,029	,130	-,040	,040	-,021	,082	-,053
	var27	,029	-,086	-,048	,044	-,092	-,043	,063	-,041	-,061	,058	-,041	-,088	,027	-,021	-,001	-,040	,222	-,019	,048	-,035	,054
	var30	-,139	,120	-,076	-,019	,059	,015	,026	-,072	-,016	,063	,002	-,018	-,077	,076	-,017	,040	-,019	,202	-,054	,037	,037
	var32	,055	,011	,002	-,020	-,017	,039	,005	-,036	-,024	-,024	-,081	-,073	,077	-,092	-,058	-,021	,048	-,054	,166	-,086	,045
	var33	-,025	,019	-,004	,004	-,029	-,038	-,018	,054	-,003	,046	-,005	,002	-,071	,044	,022	,082	-,035	,037	-,086	,163	-,076
	var34	-,043	,017	-,051	,011	,027	-,007	,005	-,074	-,041	,032	,011	-,069	-,004	,025	,006	-,053	,054	,037	,045	-,076	,101
Anti-image Correlation	var1	,425 ^a	-,532	,441	,061	-,318	,040	,050	,237	,168	-,467	-,242	-,059	,584	-,407	-,116	-,121	,148	-,753	,331	-,151	-,327
	var2	-,532	,582 ^a	-,112	-,239	,295	,233	-,093	-,109	-,087	,080	-,227	-,015	-,170	,166	-,341	,261	-,320	,467	,048	,083	,091
	var5	,441	-,112	,408 ^a	,044	-,238	,494	,075	,324	-,107	-,600	-,258	,209	,561	-,527	-,364	-,124	-,252	-,415	,010	-,025	-,398
	var10	,061	-,239	,044	,690 ^a	-,270	-,252	,202	-,280	,190	-,036	-,094	,055	,185	-,049	,231	-,448	,158	-,070	-,082	,016	,061
	var12	-,318	,295	,238	-,270	,511 ^a	,370	,009	,006	-,307	-,143	,108	,169	-,091	-,049	-,177	-,140	-,301	,204	-,064	-,111	,133
	var13	,040	,233	,494	-,252	,370	,630 ^a	-,036	-,056	-,154	-,327	-,378	,063	,372	-,400	-,701	,021	-,239	,086	,252	-,246	-,060
	var14	,050	-,093	,075	,202	,009	-,036	,734 ^a	-,496	,140	-,180	-,217	,123	,262	-,197	-,170	,221	,245	,109	,023	-,083	,027
	var15	,237	-,109	,324	-,280	,006	-,056	-,496	,616 ^a	-,146	-,194	,075	,240	-,024	-,076	,042	,353	-,206	-,378	-,209	,315	-,552
	var16	,168	-,087	-,107	,190	-,307	-,154	,140	-,146	,804 ^a	-,393	,034	,262	,034	,121	,075	-,061	-,265	-,071	-,118	-,017	-,265
	var17	-,467	,080	-,600	-,036	-,143	-,327	-,180	-,194	-,393	,348 ^a	,099	-,508	-,629	,471	,292	,278	,374	,426	-,178	,343	,310
	var19	-,242	-,227	-,258	-,094	,108	-,378	-,217	,075	,034	,099	,528 ^a	,299	-,529	,382	,682	-,231	-,207	,009	-,473	-,030	,084
	var21	-,059	-,015	,209	,055	,169	,063	,123	,240	,262	-,508	,299	,623 ^a	,036	-,100	,080	-,146	-,376	-,083	-,364	,012	-,442
	var22	,584	-,170	,561	,185	-,091	,372	,262	-,024	,034	-,629	-,529	,036	,305 ^a	-,624	-,489	-,294	,158	-,482	,531	-,490	-,037
	var24	-,407	,166	-,527	-,049	-,049	-,400	-,197	-,076	,121	,471	,382	-,100	-,624	,463 ^a	,308	,128	-,080	,307	-,411	,199	,141
	var25	-,116	-,341	-,364	,231	-,177	-,701	-,170	,042	,075	,292	,682	,080	-,489	,308	,585 ^a	-,252	-,007	-,119	-,450	,172	,063
	var26	-,121	,261	-,124	-,448	-,140	,021	-,221	,353	-,061	,278	-,231	-,146	-,294	,128	-,252	,660 ^a	-,236	,246	-,142	,561	-,463
	var27	,148	-,320	-,252	,158	-,301	-,239	,245	-,206	-,265	,374	-,207	-,376	,158	-,080	-,007	-,236	,619 ^a	-,087	-,184	,363	
	var30	-,753	,467	-,415	-,070	,204	,086	,109	-,378	-,071	,426	,009	-,083	-,482	,307	-,119	,246	-,087	,366 ^a	-,294	,204	,256
	var32	,331	,048	,010	-,082	-,064	,252	,023	-,209	-,118	-,178	-,473	-,364	,531	-,411	-,450	-,142	,251	-,294	,586 ^a	-,522	,345
	var33	-,151	,083	-,025	,016	-,111	-,246	-,083	,315	-,017	,343	-,030	,012	-,490	,199	,172	,561	-,184	,204	-,522	,473 ^a	-,590
	var34	-,327	,091	-,398	,061	,133	-,060	,027	-,552	-,265	,310	-,084	-,442	-,037	,141	,063	-,463	,363	,256	,345	-,590	,587 ^a

a. Measures of Sampling Adequacy(MSA)

Anti-image Matrices

	var1	var2	var5	var10	var12	var13	var14	var15	var16	var17	var19	var21	var24	var25	var26	var27	var30	var32	var33	var34	
Anti-image Covariance	var1	,255	-,159	,042	-,018	-,108	-,049	-,037	,066	,045	-,034	,024	-,025	-,024	,044	,012	,017	-,172	,007	,045	-,060
	var2	-,159	,338	-,006	-,074	,108	,078	-,016	-,028	-,023	-,009	-,109	-,003	,032	-,105	,049	-,084	,133	,046	,000	,016
	var5	,042	-,006	,241	-,022	,112	,076	-,025	,085	-,037	-,080	,014	,055	-,094	-,022	,010	-,098	-,050	-,097	,079	-,071
	var10	-,018	-,074	-,022	,357	-,101	-,087	,054	-,071	,055	,027	,001	,015	,036	,082	-,094	,038	,007	-,062	,035	,013
	var12	-,108	,108	,112	-,101	,425	,118	,012	-,001	-,098	-,071	,023	,056	-,062	-,061	-,043	-,091	,061	-,006	-,054	,027
	var13	-,049	,078	,076	-,087	,118	,172	-,035	-,009	-,037	-,023	-,047	,011	-,067	-,097	,023	-,064	,069	,014	-,015	-,007
	var14	-,037	-,016	-,025	,054	,012	-,035	,314	-,121	,037	-,005	-,027	,033	-,018	-,010	-,033	,057	,080	-,038	,014	,007
	var15	,066	-,028	,085	-,071	,001	-,009	-,121	,180	-,030	-,048	,015	,051	-,035	,005	,058	-,042	-,097	-,047	,069	-,075
	var16	,045	-,023	-,037	,055	-,098	-,037	,037	-,030	,242	-,100	,015	,063	,063	,019	-,010	-,064	-,016	-,038	,000	-,041
	var17	-,034	-,009	-,080	,027	-,071	-,023	-,005	-,048	-,100	,180	-,074	-,131	,038	-,004	,020	,125	,039	,048	,010	,050
	var19	,024	-,109	,014	,001	,023	-,047	,015	,015	-,074	,246	,092	,027	,104	-,089	-,035	-,084	-,064	-,090	-,012	,012
	var21	-,025	-,003	,055	,015	,056	,011	,033	,051	,063	-,131	,092	,244	-,034	,020	-,026	-,091	-,019	-,108	,008	-,069
	var24	-,024	,032	-,094	,036	-,062	-,067	-,018	-,035	,063	,038	,027	-,034	,492	,001	-,020	,008	,003	-,040	-,051	,034
	var25	,044	-,105	-,022	,082	-,061	-,097	-,010	,005	,019	-,004	,104	,020	,001	,134	-,065	,014	-,087	-,045	-,015	,006
	var26	,012	,049	,010	-,094	-,043	,023	-,033	,058	-,010	,020	-,089	-,026	-,020	-,065	,142	-,036	,024	,003	,087	-,059
	var27	,017	-,084	-,098	,038	-,091	-,064	,057	-,042	-,064	,125	-,035	-,091	,008	,014	-,036	,228	-,003	,046	-,027	,057
	var30	-,172	,133	-,050	,007	,061	,069	,080	-,097	-,016	,039	-,084	-,019	,003	-,087	,024	-,003	,263	-,013	-,010	,044
	var32	,007	,046	-,097	-,062	-,006	,014	-,038	-,047	-,038	,048	-,064	-,108	-,040	-,045	,003	,046	-,013	,231	-,079	,066
	var33	,045	,000	,079	,035	-,054	-,015	,014	,069	,000	,010	-,090	,008	-,051	-,015	,087	-,027	-,010	-,079	,215	-,103
	var34	-,060	,016	-,071	,013	,027	-,007	,007	-,075	-,041	,050	,012	-,069	,034	,006	-,059	,057	,044	,066	-,103	,101
Anti-image Correlation	var1	,554 ^a	-,541	,168	-,060	-,327	-,235	-,131	,309	,183	-,158	,098	-,099	-,068	,239	,065	,069	-,663	,030	,192	-,377
	var2	-,541	,547 ^a	-,020	-,214	,285	,324	-,051	-,114	-,082	-,035	-,379	-,009	,078	-,494	,224	-,301	,446	,165	,000	,086
	var5	,168	-,020	,507 ^a	-,074	,351	,372	-,090	,408	-,153	-,383	,055	,228	-,272	-,124	,052	-,418	-,199	-,410	,347	-,456
	var10	-,060	-,214	-,074	,658 ^a	-,259	-,351	,162	-,280	,187	,105	,004	,050	,087	,375	-,419	,133	,022	-,217	,125	,069
	var12	-,327	,285	,351	-,259	,430 ^a	,437	,034	-,004	-,306	-,259	,071	,173	-,136	-,254	-,175	-,291	,183	-,018	-,179	,131
	var13	-,235	,324	,372	-,351	,437	,669 ^a	-,149	-,051	-,180	-,130	-,231	,053	-,231	-,641	,147	-,325	,326	,069	-,079	-,050
	var14	-,131	-,051	-,090	,162	,034	-,149	,772 ^a	-,508	,135	-,021	-,096	,117	-,045	-,050	-,156	,214	,278	-,142	,053	,038
	var15	,309	-,114	,408	-,280	,004	-,051	-,508	,569 ^a	-,145	-,270	,073	,241	-,116	,034	,362	-,205	-,444	-,231	,349	-,553
	var16	,183	-,082	-,153	,187	-,306	-,180	,135	-,145	,763 ^a	-,479	,061	,261	,183	,106	-,053	-,274	-,062	-,160	-,001	-,264
	var17	-,158	-,035	-,383	,105	-,259	-,130	-,021	-,270	-,479	,412 ^a	-,354	-,625	,129	-,023	,124	,616	,180	,237	,051	,369
	var19	,098	-,379	,055	,004	,071	-,231	-,096	,073	,061	-,354	,544 ^a	,375	,078	,572	-,477	-,148	-,330	-,267	-,392	,076
	var21	-,099	-,009	,228	,050	,173	,053	,117	,241	,261	-,625	,375	,564 ^a	-,099	,112	-,142	-,387	-,075	-,452	,034	-,441
	var24	-,068	,078	-,272	,087	-,136	-,231	-,045	-,116	,183	,129	,078	-,099	,835 ^a	,004	-,075	,025	,009	-,119	-,157	,151
	var25	,239	-,494	-,124	,375	-,254	-,641	-,050	,034	,106	-,023	,572	,112	,004	,612 ^a	-,475	,082	-,464	-,258	-,089	,051
	var26	,065	,224	,052	-,419	-,175	,147	-,156	,362	-,053	,124	-,477	-,142	-,075	-,475	,656 ^a	-,201	,125	,018	,501	-,496
	var27	,069	-,301	-,418	,133	-,291	-,325	,214	-,205	-,274	,616	-,148	-,387	,025	,082	-,201	,572 ^a	-,013	,199	-,124	,374
	var30	-,663	,446	-,199	,022	,183	,326	,278	-,444	-,062	,180	-,330	-,075	,009	-,464	,125	-,013	,412 ^a	-,052	-,042	,272
	var32	,030	,165	-,410	-,217	-,018	,069	-,142	-,231	-,160	,237	-,267	-,452	-,119	-,258	,018	,199	-,052	,698 ^a	-,354	,430
	var33	,192	,000	,347	,125	-,179	-,079	,053	,349	-,001	,051	-,392	,034	-,157	-,089	,501	-,124	-,042	-,354	,471 ^a	-,699
	var34	-,377	,086	-,456	,069	,131	-,050	,038	-,553	-,264	,369	,076	-,441	,151	-,051	-,496	,374	,272	,430	-,699	,535 ^a

a. Measures of Sampling Adequacy(MSA)

Anti-image Matrices

	var1	var2	var5	var10	var12	var13	var14	var15	var16	var17	var19	var21	var24	var25	var26	var27	var32	var33	var34	
Anti-image Covariance	var1	,455	-,161	,017	-,024	-,125	-,008	,029	,007	,063	-,015	-,061	-,067	-,039	-,029	,051	,026	-,002	,069	-,061
	var2	-,161	,422	,025	-,097	,099	,060	-,077	,032	-,020	-,037	-,094	,009	,038	-,097	,047	-,102	,066	,006	-,009
	var5	,017	,025	,251	-,021	,134	,104	-,011	,086	-,042	-,078	-,003	,054	-,097	-,052	,015	-,103	-,104	,080	-,071
	var10	-,024	-,097	-,021	,357	-,106	-,099	,057	-,085	,056	,026	,004	,015	,036	,107	-,096	,038	-,062	,035	,013
	var12	-,125	,099	,134	-,106	,440	,118	-,007	,031	-,098	-,086	,049	,063	-,065	-,053	-,051	-,093	-,003	-,054	,019
	var13	-,008	,060	,104	-,099	,118	,192	-,067	,023	-,037	-,038	-,032	,018	-,076	-,106	,019	-,071	-,019	-,014	-,022
	var14	,029	-,077	-,011	,057	-,007	-,067	,340	-,123	,046	-,019	-,001	,042	-,020	,022	-,044	-,063	-,037	,018	-,008
	var15	,007	,032	,086	-,085	,031	,023	-,123	,224	-,045	-,044	-,022	,055	-,042	-,042	,084	-,053	-,065	,081	-,078
	var16	,063	-,020	-,042	,056	-,098	-,037	,046	-,045	,243	-,101	,011	,063	,064	,018	-,009	-,065	-,039	-,001	-,042
	var17	-,015	-,037	-,078	,026	-,086	-,038	-,019	-,044	-,101	,186	-,072	-,133	,039	,012	,017	,129	,052	,012	,048
	var19	-,061	-,094	-,003	,004	,049	-,032	-,001	-,022	,011	-,072	,276	,097	,031	,109	-,093	-,040	-,076	-,105	,032
	var21	-,067	,009	,054	,015	,063	,018	,042	,055	,063	-,133	,097	,246	-,034	,018	-,025	-,092	-,109	,007	-,072
	var24	-,039	,038	-,097	,036	-,065	-,076	-,020	-,042	,064	,039	,031	-,034	,492	,003	-,020	,008	-,040	-,051	,036
	var25	-,029	-,097	-,052	,107	-,053	-,106	,022	-,042	,018	,012	,109	,018	,022	,003	,170	-,074	,017	-,063	-,023
	var26	,051	,047	,015	-,096	-,051	,019	-,044	,084	-,009	,017	-,093	-,019	-,025	-,020	-,074	,144	-,036	,004	-,090
	var27	,026	-,102	-,103	,038	-,093	-,071	,063	-,053	-,065	,129	-,040	-,092	,008	,017	-,036	,228	,046	-,028	,062
	var32	-,002	,066	-,104	-,062	-,003	,019	-,037	-,065	-,039	,052	-,076	-,109	-,040	-,063	,004	,046	,232	-,080	,074
	var33	,069	,006	,080	,035	-,054	-,014	,018	,081	-,001	,012	-,105	,007	-,051	-,023	,090	-,028	-,080	,215	-,110
	var34	-,061	-,009	-,071	,013	,019	-,022	-,008	-,078	-,042	,048	,032	-,072	,036	,028	-,070	,062	,074	-,110	,109
Anti-image Correlation	var1	,744 ^a	-,367	,049	-,060	-,280	-,027	,074	,021	,190	-,052	-,172	-,199	-,083	-,103	,199	,081	-,006	,220	-,273
	var2	-,367	,669 ^a	,078	-,250	,231	,212	-,203	,104	-,061	-,131	-,275	,028	,082	-,362	,190	-,330	,211	,020	-,041
	var5	,049	,078	,476 ^a	-,071	,402	,472	-,037	,363	-,169	-,011	,218	-,276	-,249	,079	-,429	-,430	,346	-,426	
	var10	-,060	-,250	-,071	,629 ^a	-,268	-,379	,162	-,302	,189	,103	,012	,051	,086	,435	-,425	,133	-,216	,126	,066
	var12	-,280	,231	,402	-,268	,439 ^a	,406	-,018	,097	-,300	-,301	,142	,191	-,140	-,195	-,203	-,294	-,009	-,174	,085
	var13	-,027	,212	,472	-,379	,406	,689 ^a	-,263	,111	-,169	-,203	-,138	,082	-,248	-,585	,114	-,340	,091	-,070	-,152
	var14	,074	-,203	-,037	,162	-,018	-,263	,782 ^a	-,447	,159	-,075	-,004	,144	-,049	,092	-,200	,227	-,133	,068	-,041
	var15	,021	,104	,363	-,302	,097	,111	-,447	,596 ^a	-,193	-,215	-,087	,233	-,125	-,216	,469	-,235	-,284	,369	-,501
	var16	,190	-,061	-,169	,189	-,300	-,169	,159	-,193	,759 ^a	-,476	,043	,257	,184	,087	-,046	-,275	-,164	-,003	-,257
	var17	-,052	-,131	-,360	,103	-,301	-,203	-,075	-,215	-,476	,417 ^a	-,317	-,623	,130	,070	,105	,629	,251	,059	,338
	var19	-,172	-,275	-,011	,012	,142	-,138	-,004	-,087	,043	-,317	,582 ^a	,372	,085	,501	-,466	-,161	-,301	-,430	,183
	var21	-,199	,028	,218	,051	,191	,082	,144	,233	,257	-,623	,372	,553 ^a	-,099	,087	-,134	-,389	-,458	,031	-,438
	var24	-,083	,082	-,276	,086	-,140	-,248	-,049	-,125	,184	,130	,085	-,099	,818 ^a	,009	-,076	,025	-,119	-,157	,154
	var25	-,103	-,362	-,249	,435	-,195	-,585	,092	-,216	,087	,070	,501	,087	,009	,644 ^a	-,475	,086	-,318	-,123	,208
	var26	,199	,190	,079	-,425	-,203	,114	-,200	,469	-,046	,105	-,466	-,134	-,076	-,475	,630 ^a	-,201	,025	,510	-,555
	var27	,081	-,330	-,429	,133	-,294	-,340	,227	-,235	-,275	,629	-,161	-,389	,025	,086	-,201	,552 ^a	,199	-,124	,392
	var32	-,006	,211	-,430	-,216	-,009	,091	-,133	-,284	-,164	,251	-,301	-,458	-,119	-,318	,025	,199	,648 ^a	-,357	,463
	var33	,220	,020	,346	,126	-,174	-,070	,068	,369	-,003	,059	-,430	,031	-,157	-,123	,510	-,124	-,357	,455 ^a	-,715
	var34	-,273	-,041	-,426	,066	,085	-,152	-,041	-,501	-,257	,338	-,183	-,438	,154	,208	-,555	,392	,463	-,715	,540 ^a

a. Measures of Sampling Adequacy(MSA)

Anti-image Matrices

	var1	var2	var5	var10	var12	var13	var14	var15	var16	var19	var21	var24	var25	var26	var27	var32	var33	var34	
Anti-image Covariance	var1	,456	-,167	,012	-,022	-,146	-,012	,028	,003	,071	-,074	-,127	-,037	-,028	,053	,061	,002	,070	-,064
	var2	-,167	,429	,012	-,095	,092	,056	-,082	,025	-,052	-,122	-,029	,047	-,097	,052	-,129	,083	,009	,001
	var5	,012	,012	,289	-,012	,123	,105	-,022	,082	-,125	-,042	-,003	-,094	-,054	,026	-,092	-,101	,099	-,065
	var10	-,022	-,095	-,012	,361	-,104	-,099	,060	-,084	,092	,016	,057	,032	,107	-,101	,033	-,075	,034	,007
	var12	-,146	,092	,123	-,104	,484	,115	-,018	,012	-,206	,020	,002	-,052	-,053	-,048	-,060	,025	-,053	,051
	var13	-,012	,056	,105	-,099	,115	,201	-,075	,015	-,077	-,054	-,016	-,072	-,108	,024	-,077	,033	-,012	-,014
	var14	,028	-,082	-,022	,060	-,018	-,075	,342	-,135	,046	-,010	,046	-,016	,024	-,043	,127	-,034	,020	-,003
	var15	,003	,025	,082	-,084	,012	,015	-,135	,235	-,094	-,045	,040	-,035	-,041	,094	-,039	-,059	,088	-,079
	var16	,071	-,052	-,125	,092	-,206	-,077	,046	-,094	,315	-,040	-,020	,112	,032	,001	,012	-,015	,007	-,023
	var19	-,074	-,122	-,042	,016	,020	-,054	-,010	-,045	-,040	,307	,083	,053	,127	-,097	,018	-,067	-,112	,063
	var21	-,127	-,029	-,003	,057	,002	-,016	,046	,040	-,020	,083	,401	-,010	,044	-,021	,002	-,126	,026	-,069
	var24	-,037	,047	-,094	,032	-,052	-,072	-,016	-,035	,112	,053	-,010	,501	3,229E-005	-,025	-,032	-,056	-,055	,029
	var25	-,028	-,097	-,054	,107	-,053	-,108	,024	-,041	,032	,127	,044	3,229E-005	,171	-,077	,014	-,072	-,024	,029
	var26	,053	,052	,026	-,101	-,048	,024	-,043	,094	,001	-,097	-,021	-,025	-,077	,146	-,081	,000	,090	-,084
	var27	,061	-,129	-,092	,033	-,060	-,077	,127	-,039	,012	,018	,002	-,032	,014	-,081	,377	,017	-,060	,053
	var32	,002	,083	-,101	-,075	,025	,033	-,034	-,059	-,015	-,067	-,126	-,056	-,072	,000	,017	,248	-,089	,072
	var33	,070	,009	,099	,034	-,053	-,012	,020	,088	,007	-,112	,026	-,055	-,024	,090	-,060	-,089	,216	-,128
	var34	-,064	,001	-,065	,007	,051	-,014	-,003	-,079	-,023	,063	-,069	,029	-,084	,053	,072	-,128	,123	
Anti-image Correlation	var1	,695 ^a	-,377	,032	-,055	-,311	-,039	,070	,010	,188	-,199	-,296	-,076	-,100	,206	,147	,007	,224	-,271
	var2	-,377	,652 ^a	,034	-,240	,202	,191	-,215	,079	-,141	-,336	-,069	,101	-,356	,207	-,321	,254	,028	,003
	var5	,032	,034	,528 ^a	-,036	,330	,436	-,069	,314	-,415	-,142	-,009	-,248	-,241	,126	-,279	-,376	,394	-,347
	var10	-,055	-,240	-,036	,622 ^a	-,250	-,368	,171	-,288	,272	,048	,148	,074	,431	-,440	,088	-,251	,121	,033
	var12	-,311	,202	,330	-,250	,450 ^a	,369	-,043	,035	-,529	,051	,004	-,107	-,183	-,141	,072	-,164	,209	
	var13	-,039	,191	,436	-,368	,369	,700 ^a	-,285	,070	-,308	-,218	-,057	-,228	-,584	-,139	-,279	,150	-,059	-,091
	var14	,070	-,215	-,069	,171	-,043	-,285	,739 ^a	-,475	,141	-,030	,125	-,040	,098	-,194	,353	-,118	,073	-,017
	var15	,010	,079	,314	-,288	,035	,070	-,475	,587 ^a	-,344	-,168	,129	-,101	-,207	,506	-,132	-,243	,391	-,466
	var16	,188	-,141	-,415	,272	-,529	-,308	,141	-,344	,697 ^a	-,129	-,057	,281	,137	,004	,036	-,052	,028	-,116
	var19	-,199	-,336	-,142	,048	,051	-,218	-,030	-,168	-,129	,567 ^a	,236	,135	,553	-,459	,052	-,241	-,434	,325
	var21	-,296	-,069	-,009	,148	,004	-,057	,125	,129	-,057	,236	,760 ^a	-,023	,167	-,089	,004	-,399	,087	-,309
	var24	-,076	,101	-,248	,074	-,107	-,228	-,040	-,101	,281	,135	-,023	,814 ^a	,000	-,091	-,074	-,158	-,166	,119
	var25	-,100	-,356	-,241	,431	-,183	-,584	,098	-,207	,137	,553	,167	,000	,631 ^a	-,486	,054	-,348	-,127	,197
	var26	,206	,207	,126	-,440	-,181	,139	-,194	,506	,004	-,459	-,089	-,091	-,486	,601 ^a	-,345	-,002	,508	-,631
	var27	,147	-,321	-,279	,088	-,141	-,279	,353	-,132	,036	,052	,004	-,074	,054	-,345	,723 ^a	,054	-,209	,246
	var32	,007	,254	-,376	-,251	,072	,150	-,118	-,243	-,052	-,241	-,399	-,158	-,348	-,002	,054	,686 ^a	-,385	,415
	var33	,224	,028	,394	,121	-,164	-,059	,073	,391	,028	-,434	,087	-,166	-,127	,508	-,209	-,385	,423 ^a	-,782
	var34	-,271	,003	-,347	,033	,209	-,091	-,017	-,466	-,116	,325	-,309	,119	-,631	,246	,415	-,782	,565 ^a	

a. Measures of Sampling Adequacy(MSA)

Anti-image Matrices

	var1	var2	var5	var10	var12	var13	var14	var15	var16	var19	var21	var24	var25	var26	var27	var32	var34	
Anti-image Covariance	var1	,480	-,179	-,025	-,036	-,139	-,008	,022	-,032	,072	-,049	-,143	-,020	-,021	,034	,088	,039	-,062
	var2	-,179	,429	,009	-,097	,097	,057	-,084	,025	-,052	-,145	-,030	,050	-,097	,065	-,133	,101	,015
	var5	-,025	,009	,342	-,033	,180	,131	-,036	,058	-,152	,013	-,018	-,085	-,051	-,024	-,080	-,083	-,022
	var10	-,036	-,097	-,033	,366	-,100	-,099	,058	-,117	,092	,042	,054	,042	,114	-,157	,045	-,073	,070
	var12	-,139	,097	,180	-,100	,498	,115	-,013	,041	-,210	-,010	,008	-,070	-,061	-,036	-,080	,004	,052
	var13	-,008	,057	,131	-,099	,115	,201	-,074	,024	-,077	-,075	-,015	-,078	-,112	,039	-,084	,033	-,056
	var14	,022	-,084	-,036	,058	-,013	-,074	,344	-,170	,046	,001	,045	-,012	,027	-,070	,139	-,031	,021
	var15	-,032	,025	,058	-,117	,041	,024	-,170	,278	-,114	,001	,035	-,015	-,038	,091	-,018	-,031	-,083
	var16	,072	-,052	-,152	,092	-,210	-,077	,046	-,114	,315	-,045	-,021	,117	,033	-,003	,015	-,014	-,048
	var19	-,049	-,145	,013	,042	-,010	-,075	,001	,001	-,045	,378	,119	,031	,143	-,084	-,017	-,163	-,009
	var21	-,143	-,030	-,018	,054	,008	-,015	,045	,035	-,021	,119	,405	-,004	,048	-,044	,009	-,136	-,139
	var24	-,020	,050	-,085	,042	-,070	-,078	-,012	-,015	,117	,031	-,004	,515	-,006	-,002	-,051	-,094	-,008
	var25	-,021	-,097	-,051	,114	-,061	-,112	,027	-,038	,033	,143	,048	-,006	,174	-,091	,007	-,097	,037
	var26	,034	,065	-,024	-,157	-,036	,039	-,070	,091	-,003	-,084	-,044	-,002	-,091	,196	-,079	,058	-,108
	var27	,088	-,133	-,080	,045	-,080	-,084	,139	-,018	,015	-,017	,009	-,051	,007	-,079	,395	-,010	,048
	var32	,039	,101	-,083	-,073	,004	,033	-,031	-,031	-,014	-,163	-,136	-,094	-,097	,058	-,010	,291	,060
	var34	-,062	,015	-,022	,070	,052	-,056	,021	-,083	-,048	-,009	-,139	-,008	,037	-,108	,048	,060	,317
Anti-image Correlation	var1	,730 ^a	-,394	-,062	-,085	-,285	-,026	,055	-,086	,186	-,116	-,325	-,041	-,074	,111	,203	,104	-,159
	var2	-,394	,632 ^a	,024	-,246	,210	,193	-,218	,073	-,142	-,360	-,072	,107	-,356	,223	-,323	,287	,041
	var5	-,062	,024	,595 ^a	-,092	,435	,501	-,106	,189	-,464	,035	-,047	-,202	-,209	-,094	-,219	-,264	-,068
	var10	-,085	-,246	-,092	,564 ^a	-,235	-,364	,164	-,367	,271	,112	,139	,096	,453	-,587	,117	-,223	,207
	var12	-,285	,210	,435	-,235	,540 ^a	,365	-,032	,109	-,532	-,023	,018	-,138	-,208	-,114	-,181	,010	,130
	var13	-,026	,193	,501	-,364	,365	,661 ^a	-,282	,102	-,307	-,271	-,052	-,242	-,597	,196	-,298	,138	-,220
	var14	,055	-,218	-,106	,164	-,032	-,282	,702 ^a	-,549	,139	,002	,119	-,028	,108	-,268	,378	-,098	,065
	var15	-,086	,073	,189	-,367	,109	,102	-,549	,666 ^a	-,386	,003	,104	-,039	-,172	,388	-,056	-,109	-,280
	var16	,186	-,142	-,464	,271	-,532	-,307	,139	-,386	,668 ^a	-,130	-,060	,290	,142	-,012	,043	-,045	-,151
	var19	-,116	-,360	,035	,112	-,023	-,271	,002	,003	-,130	,592 ^a	,305	,070	,557	-,307	-,043	-,492	-,026
	var21	-,325	-,072	-,047	,139	,018	-,052	,119	,104	-,060	,305	,706 ^a	-,009	,181	-,155	,023	-,397	-,389
	var24	-,041	,107	-,202	,096	-,138	-,242	-,028	-,039	,290	,070	-,009	,823 ^a	-,022	-,008	-,112	-,244	-,019
	var25	-,074	-,356	-,209	,453	-,208	-,597	,108	-,172	,142	,557	,181	-,022	,617 ^a	-,493	,028	-,433	,157
	var26	,111	,223	-,094	-,587	-,114	-,196	-,268	,388	-,012	-,307	-,155	-,008	-,493	,670 ^a	-,284	,244	-,435
	var27	,203	-,323	-,219	,117	-,181	-,298	,378	-,056	,043	-,043	,023	-,112	,028	-,284	,747 ^a	-,029	,136
	var32	,104	,287	-,264	-,223	,010	,138	-,098	-,109	-,045	-,492	-,397	-,244	-,433	,244	-,029	,688 ^a	,197
	var34	-,159	,041	-,068	,207	,130	-,220	,065	-,280	-,151	-,026	-,389	-,019	,157	-,435	,136	,197	,766 ^a

a. Measures of Sampling Adequacy(MSA)

Tabel R

n	Taraf Signifikan		n	Taraf Signifikan		n	Taraf Signifikan	
	5%	1%		5%	1%		5%	1%
3	0,997	0,999	27	0,381	0,487	55	0,266	0,345
4	0,950	0,990	28	0,374	0,478	60	0,254	0,330
5	0,878	0,959	29	0,367	0,470	65	0,244	0,317
6	0,811	0,917	30	0,361	0,463	70	0,235	0,306
7	0,754	0,874	31	0,355	0,456	75	0,227	0,296
8	0,707	0,834	32	0,349	0,449	80	0,220	0,286
9	0,666	0,798	33	0,344	0,442	85	0,213	0,278
10	0,632	0,765	34	0,339	0,436	90	0,207	0,270
11	0,602	0,735	35	0,334	0,430	95	0,202	0,263
12	0,576	0,708	36	0,329	0,424	10	0,195	0,256
13	0,553	0,684	37	0,325	0,418	12	0,176	0,230
14	0,532	0,661	38	0,320	0,413	15	0,159	0,210
15	0,514	0,641	39	0,316	0,408	17	0,148	0,194
16	0,497	0,623	40	0,312	0,403	20	0,138	0,181
17	0,482	0,606	41	0,308	0,398	30	0,113	0,148
18	0,468	0,590	42	0,304	0,393	40	0,098	0,128
19	0,456	0,575	43	0,301	0,389	50	0,088	0,115
20	0,444	0,561	44	0,297	0,384	60	0,080	0,105
21	0,433	0,549	45	0,294	0,380	700	0,074	0,097
22	0,423	0,537	46	0,291	0,376	800	0,070	0,091
23	0,413	0,526	47	0,288	0,372	900	0,065	0,086
24	0,404	0,515	48	0,284	0,368	000	0,062	0,081
25	0,396	0,505	49	0,281	0,364			
26	0,388	0,496	50	0,279	0,361			

KOMENTAR DOSEN PENGUJI

Nama Mahasiswa : Dian Yudhianingsih
NRP : 1023067
Judul Tugas Akhir : Rancangan Tas P3K Khusus untuk Sukarelawan Evakuasi Korban Banjir yang Ergonomis dengan Menggunakan Pendekatan Metode Rekayasa *Kansei* (Studi Kasus di Palang Merah Indonesia Cabang Bandung)

Komentar-komentar Dosen Penguji:

1. Ketebalan bahan untuk masalah pada *lumbar* belum menggunakan dasar penelitian tertentu, namun hanya subjektivitas penulis.
2. Tujuan penelitian harus menunjukkan kompetensi.
3. Perlu ditambahkan beban yang dapat diangkat pelampung.
4. Perlu dilakukan perbaikan pada keterangan panjang, lebar, tinggi pada dimensi perlengkapan P3K dalam susunan tas kecil.
5. Penelitian sebaiknya dipatenkan.

DATA PENULIS

Nama Mahasiswa : Dian Yudhianingsih
Alamat di Bandung : Jalan Sawah Kurung V/1 Bandung
No. Telp Bandung : 022 5203531
No. Handphone : 082129239235
Alamat email : dianyudhianingsih@gmail.com
Pendidikan : SMA Negeri 3 Bandung
Jurusan Teknik Industri Universitas Kristen Maranatha
Nilai Tugas Akhir : A
Tanggal USTA : 18 Februari 2014