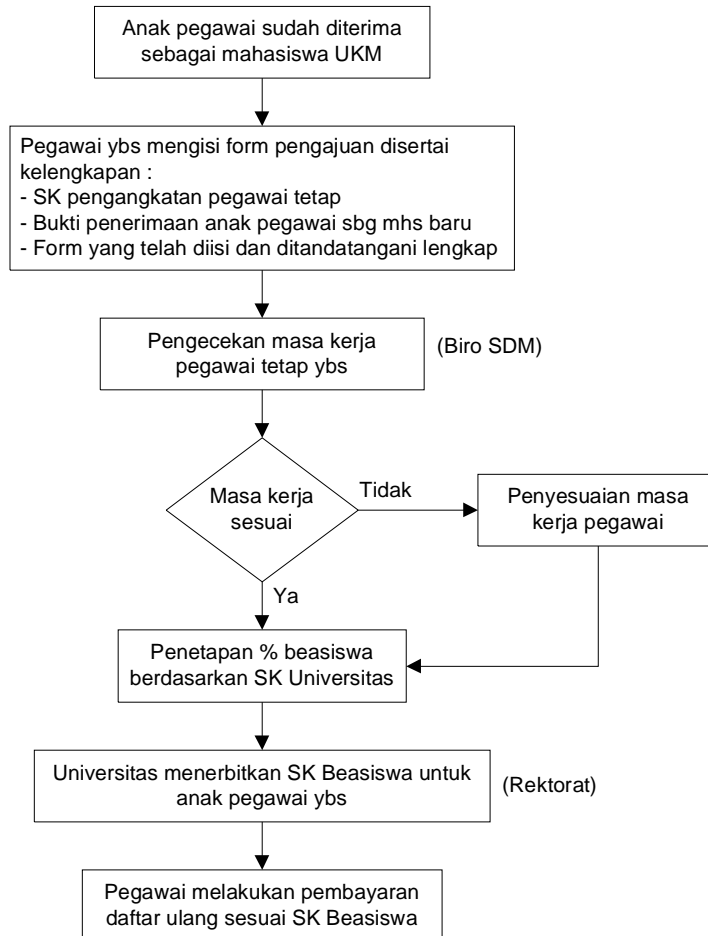
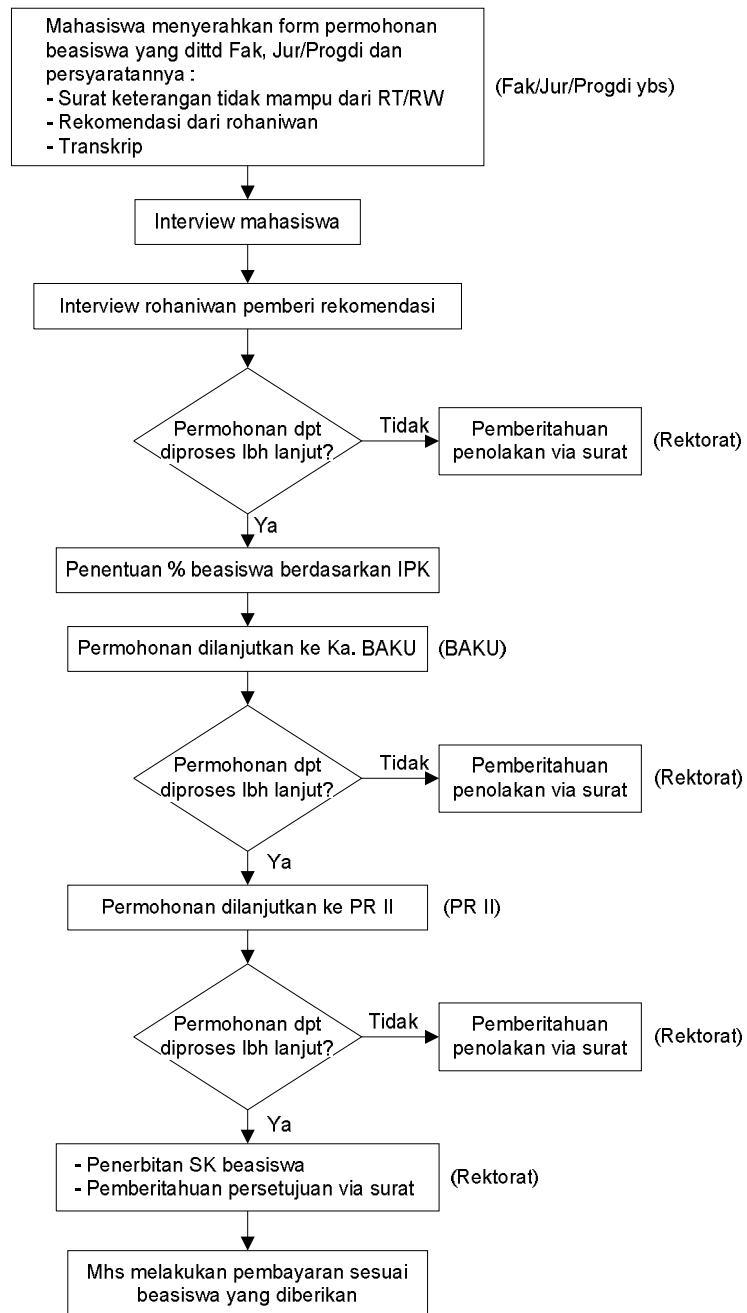
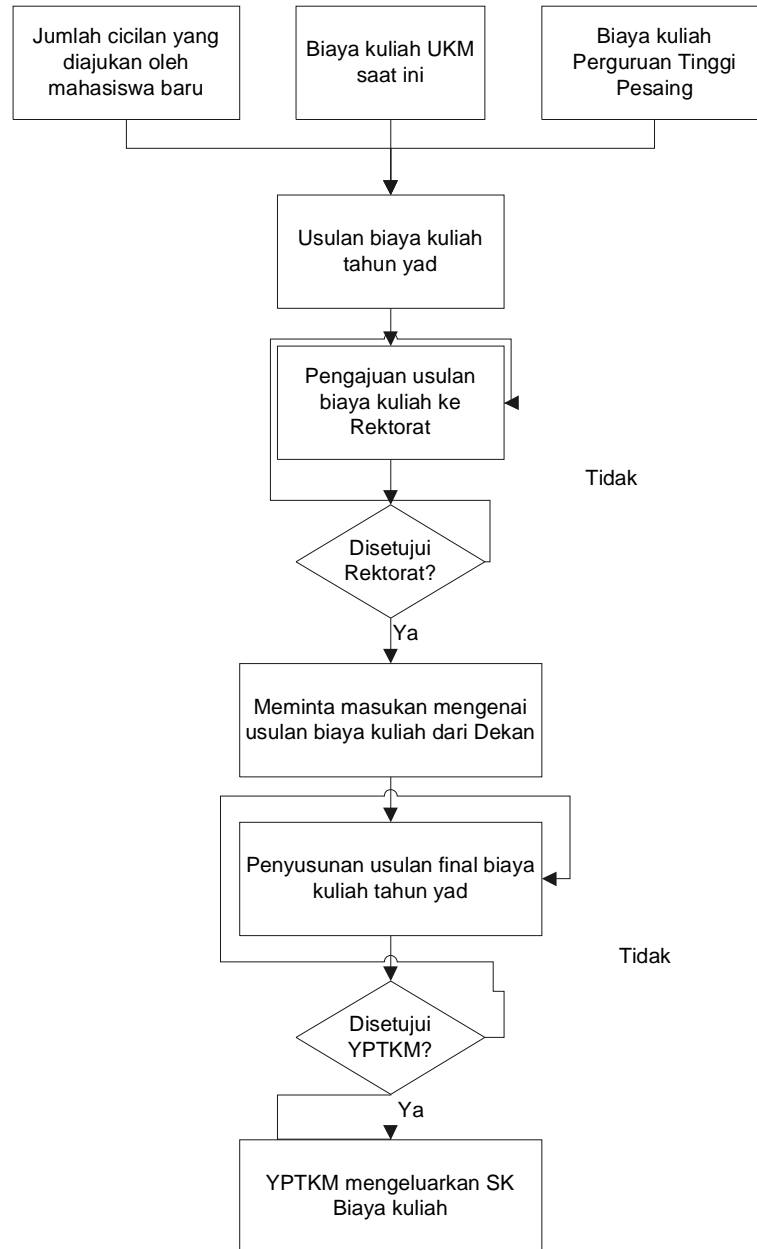


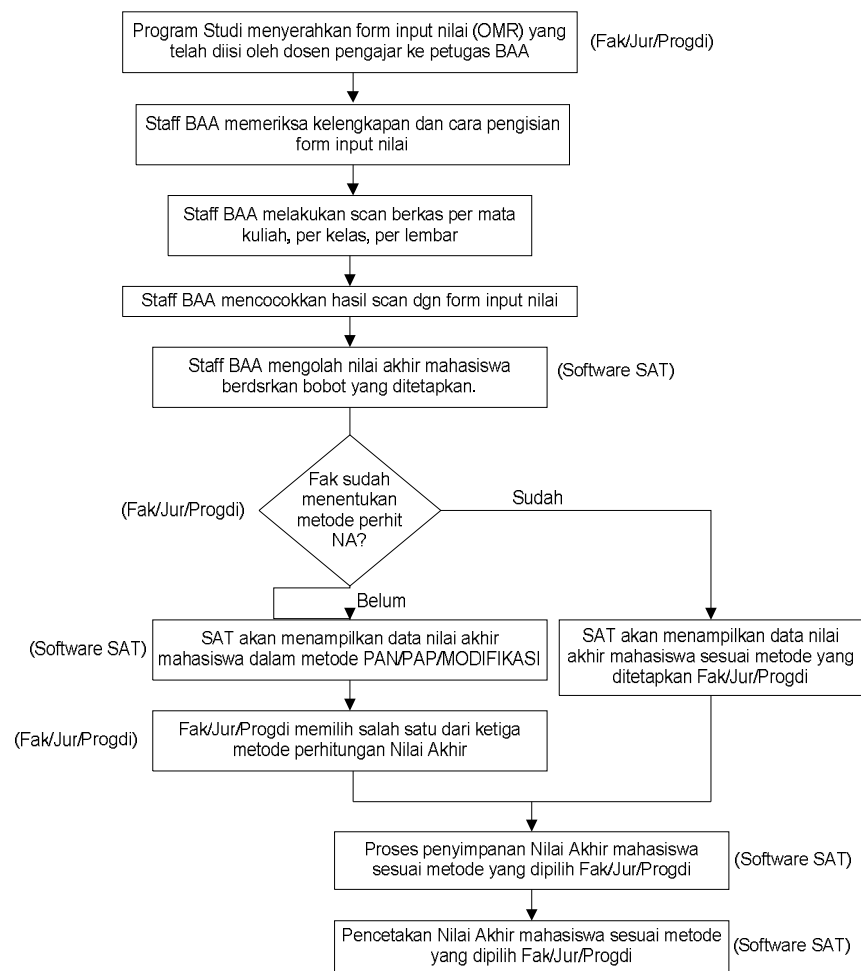
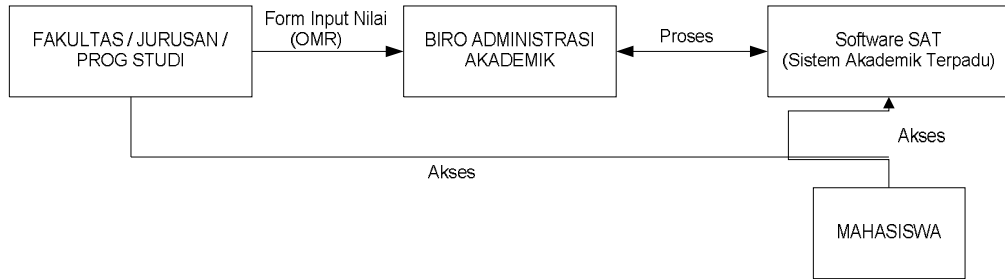
**ALUR PENGAJUAN BEASISWA ANAK PEGAWAI TETAP UKM**

## ALUR BEASISWA MAHASISWA BIASA

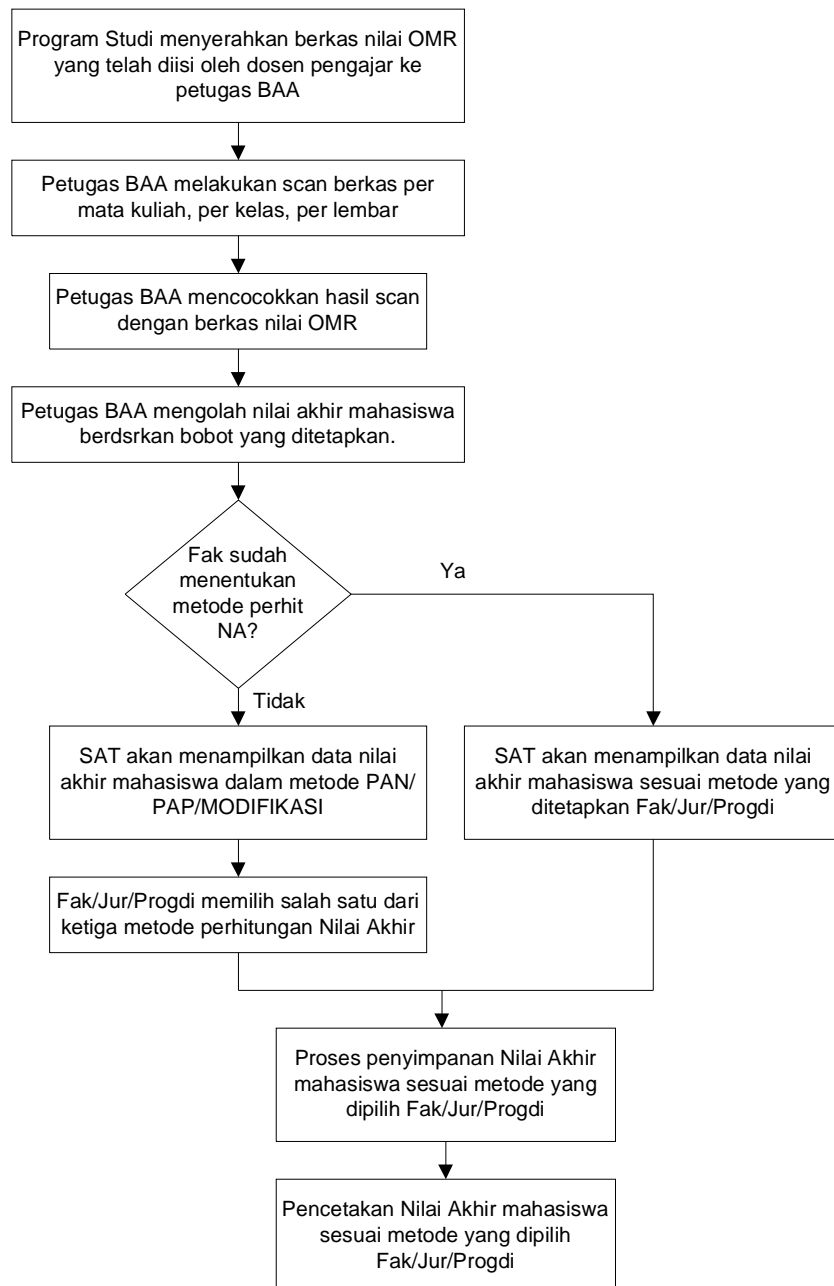


**ALUR PENENTUAN BIAYA KULIAH**

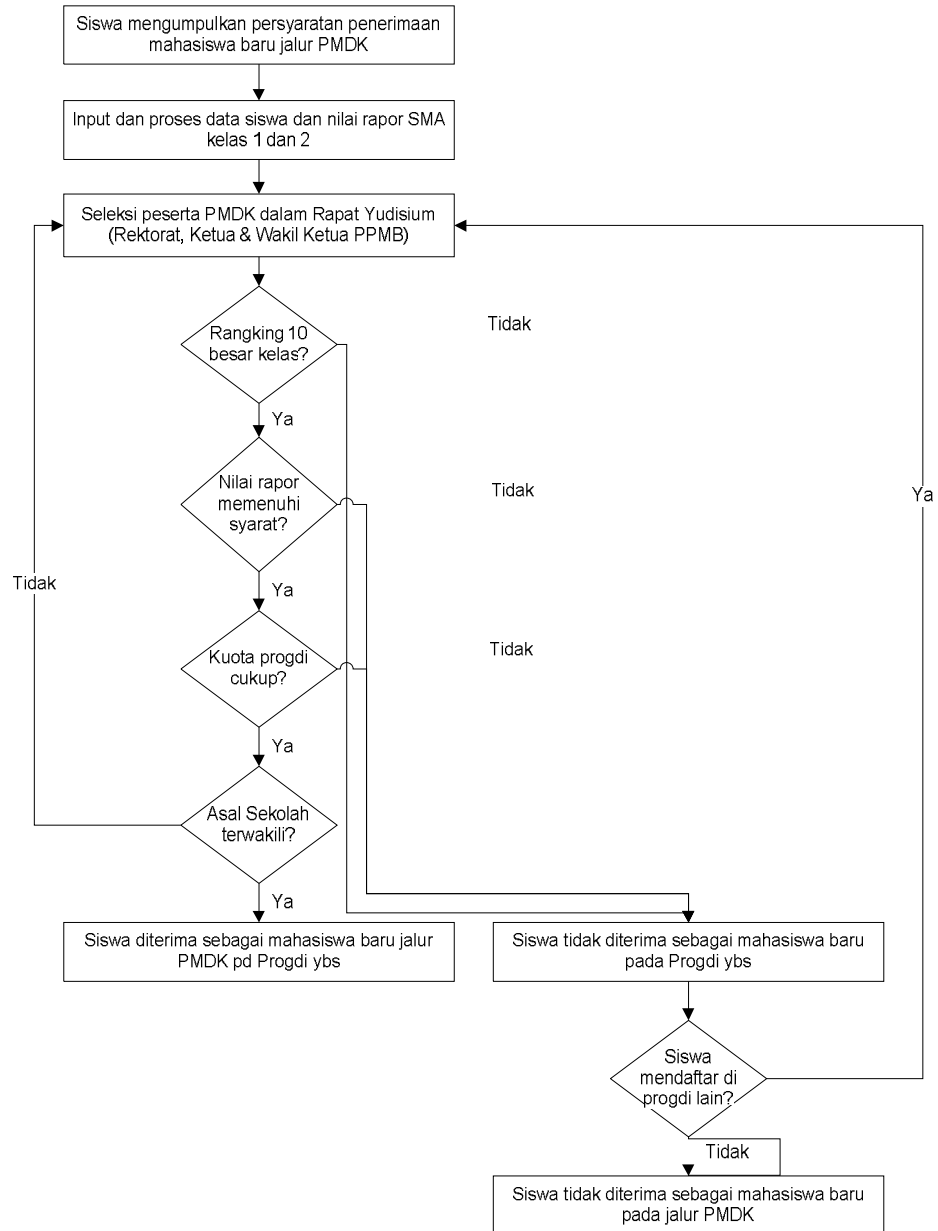
**ALUR PENGOLAHAN NILAI DENGAN PROGRAM SISTEM AKADEMIK TERPADU (SAT)**



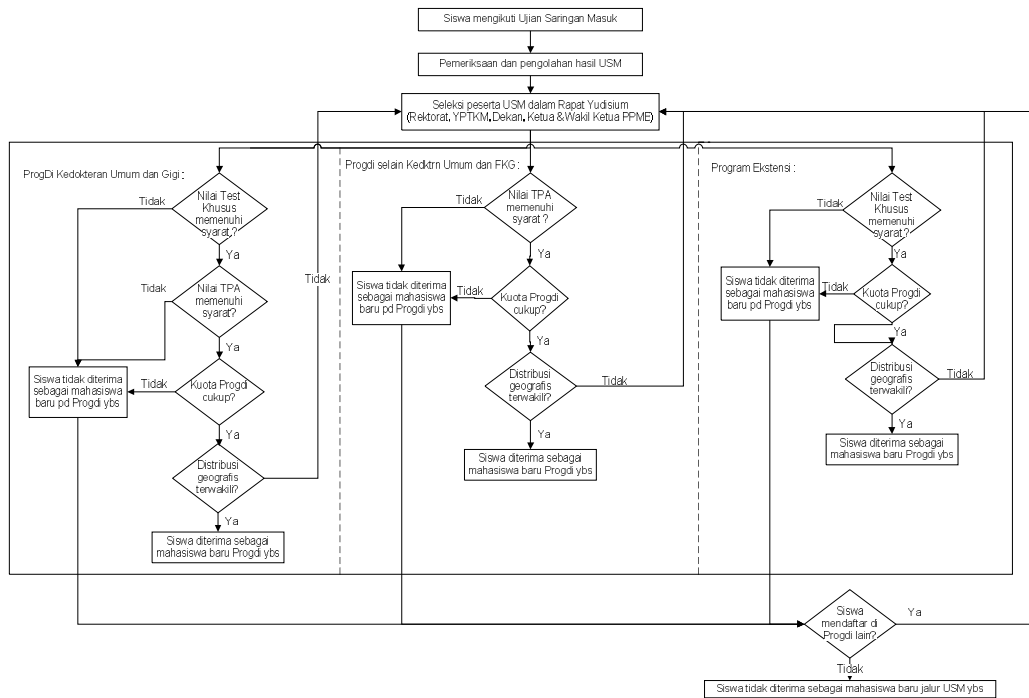
## Alur Pengolahan Nilai dengan SAT



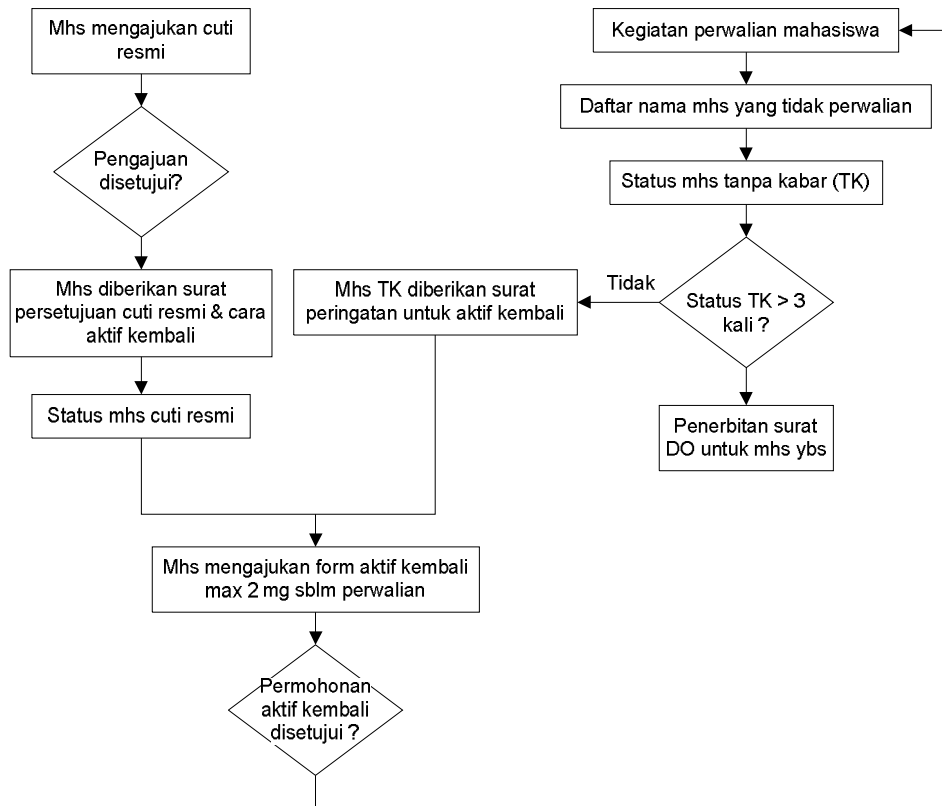
**ALUR PROSES SELEKSI JALUR PENERIMAAN PMDK**



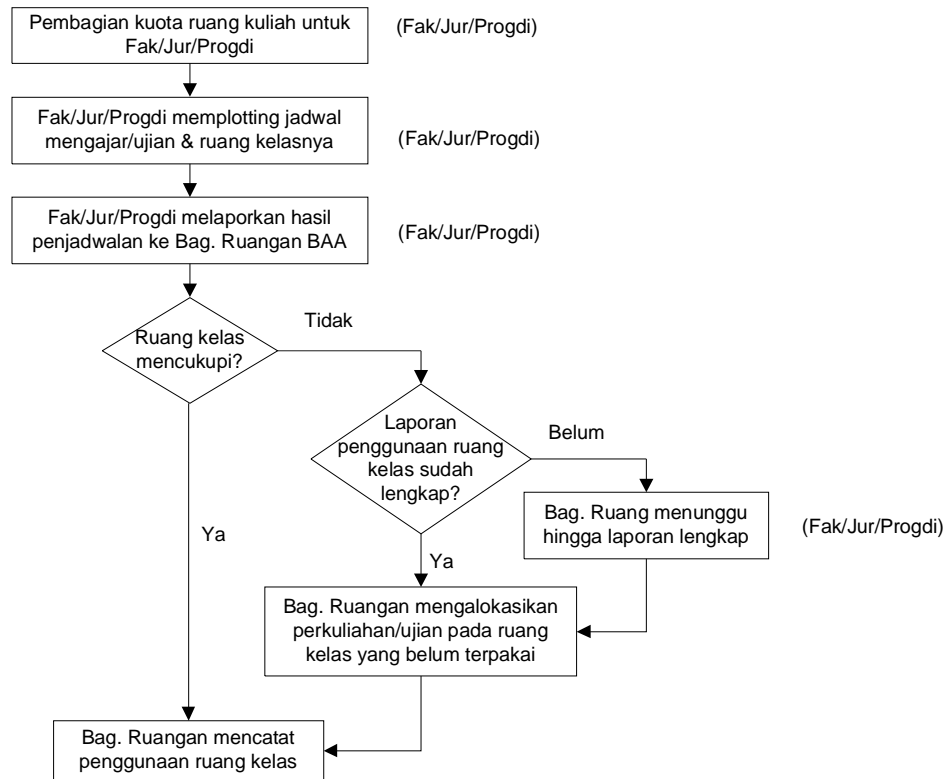
**ALUR PROSES SELEKSI JALUR PENERIMAAN USM**



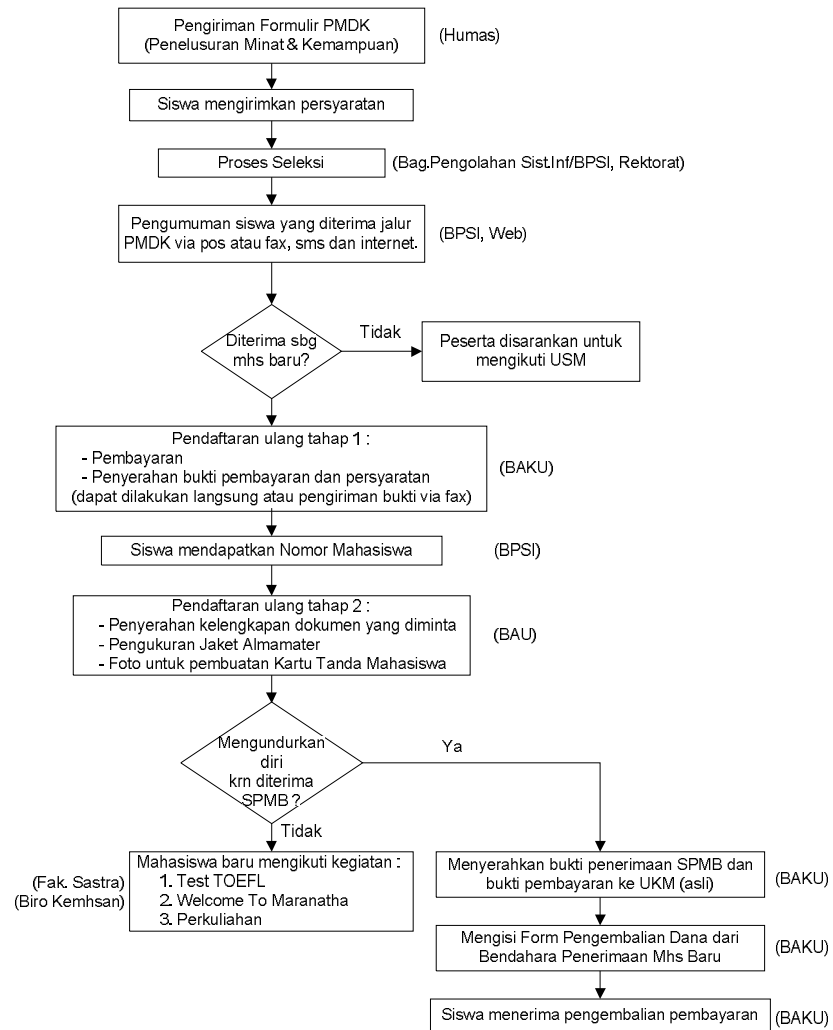
## ALUR STATUS MAHASISWA



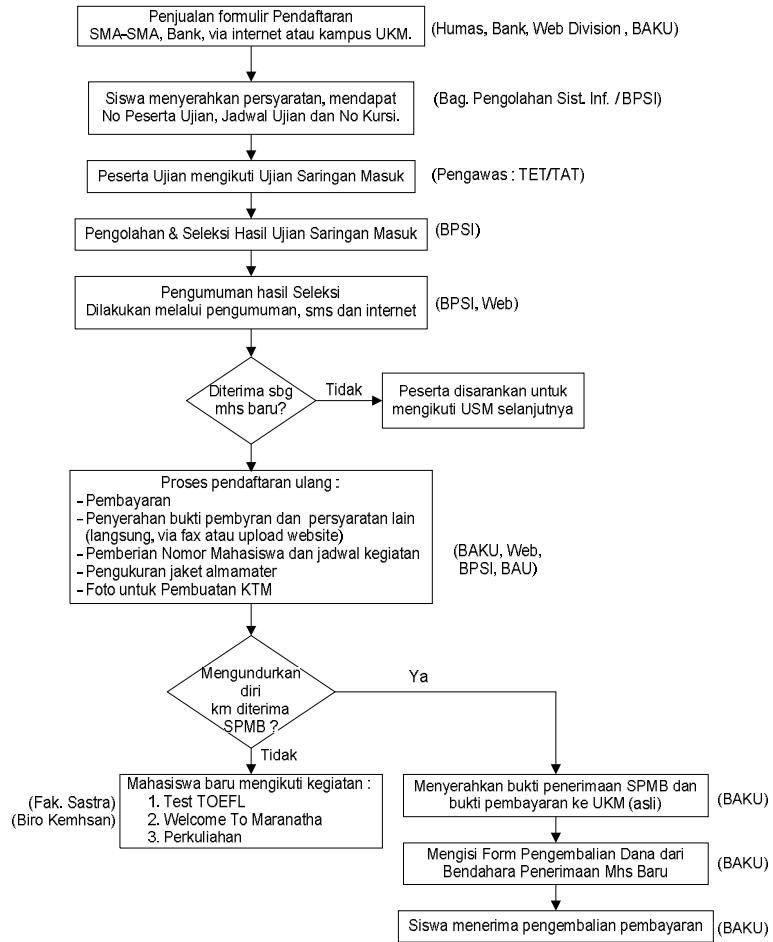


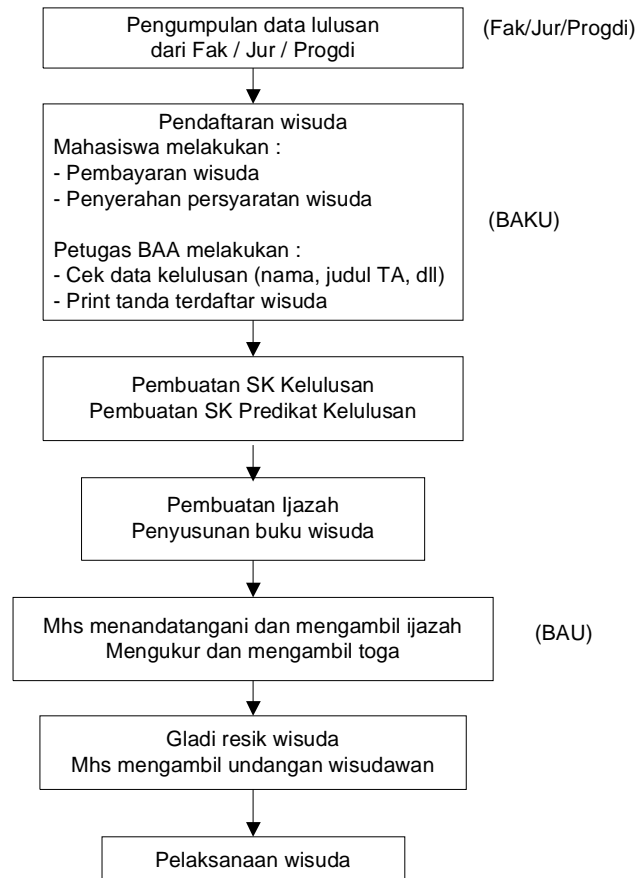
**ALUR ALOKASI RUANG KULIAH/UJIAN**

### Penerimaan Mahasiswa Baru Jalur PMDK



**ALUR PENERIMAAN MAHASISWA BARU JALUR UJIAN SARINGAN MASUK**



**ALUR PENGAJUAN WISUDA**

**PENGAJUAN KARTU TANDA MAHASISWA (KTM)  
KARENA RUSAK, HILANG, KADALUARSA, PINDAHAN**

