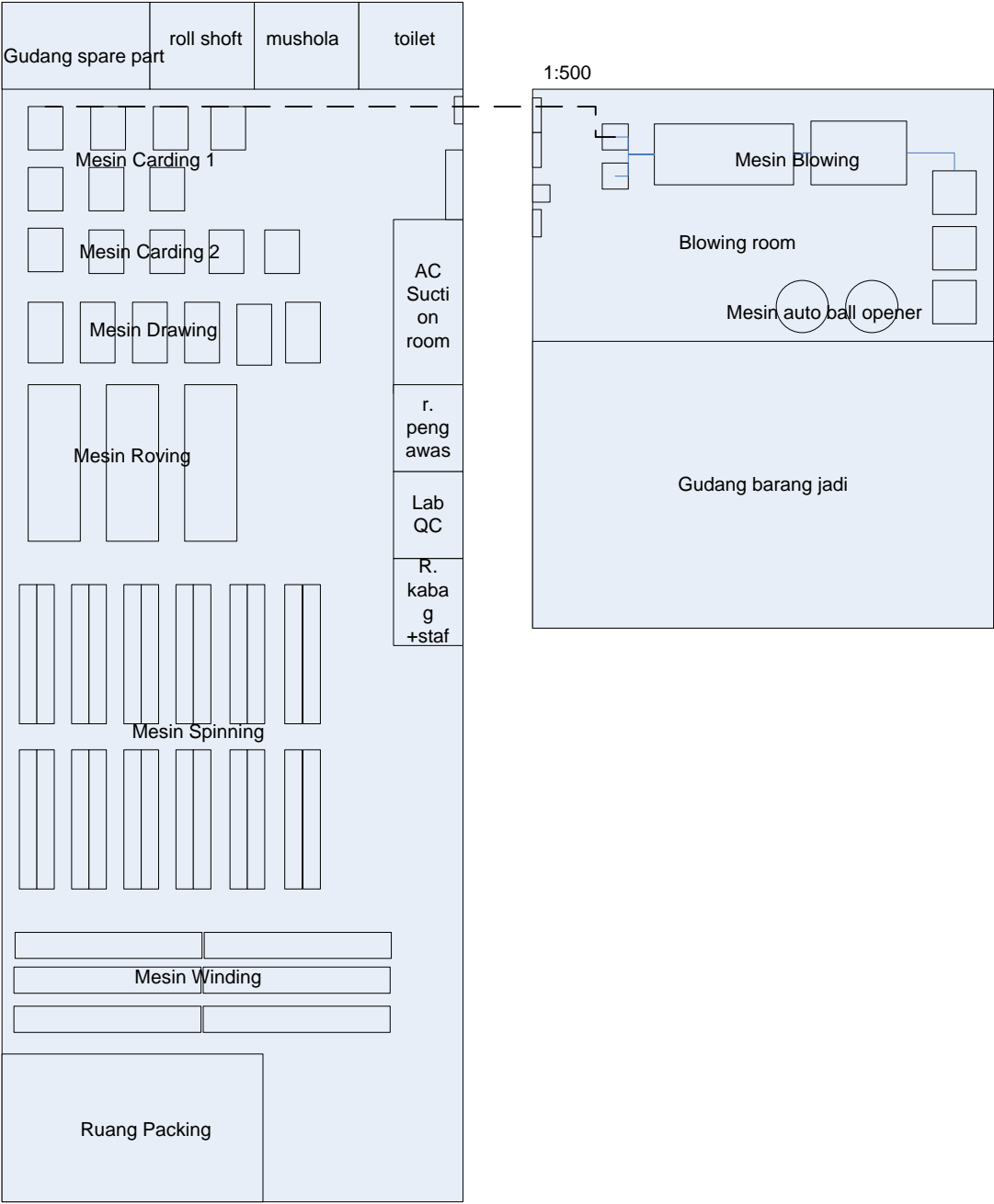


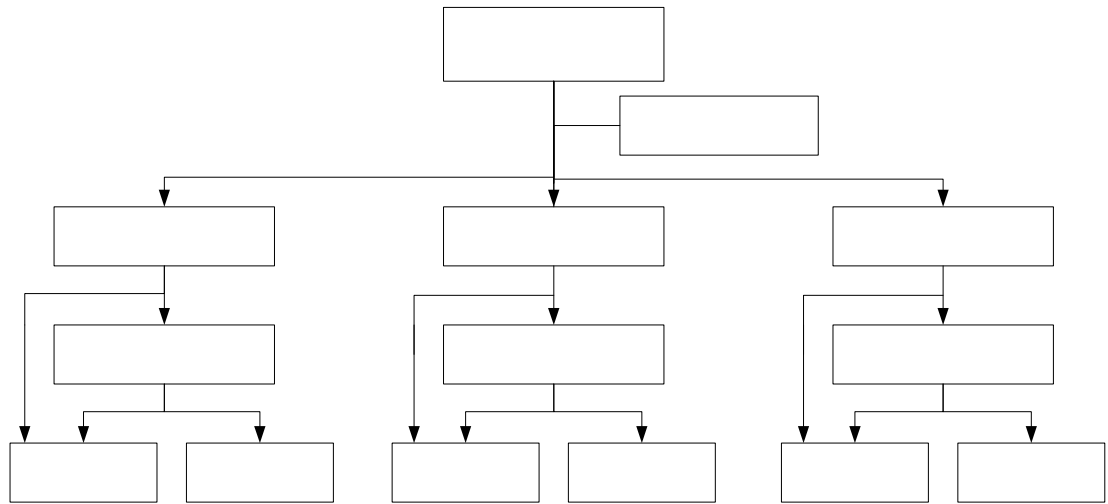
LAMPIRAN

1. Layout Perusahaan
2. Struktur Organisasi Perusahaan
3. PPO pada Bagian Pemintalan
 4. Data Cacat Atribut
 5. Data Cacat Variabel
 6. Gambar Produk
7. Gambar Kantong Usulan

LAY OUT



STRUKTUR ORGANISASI



MANAJER TENUN

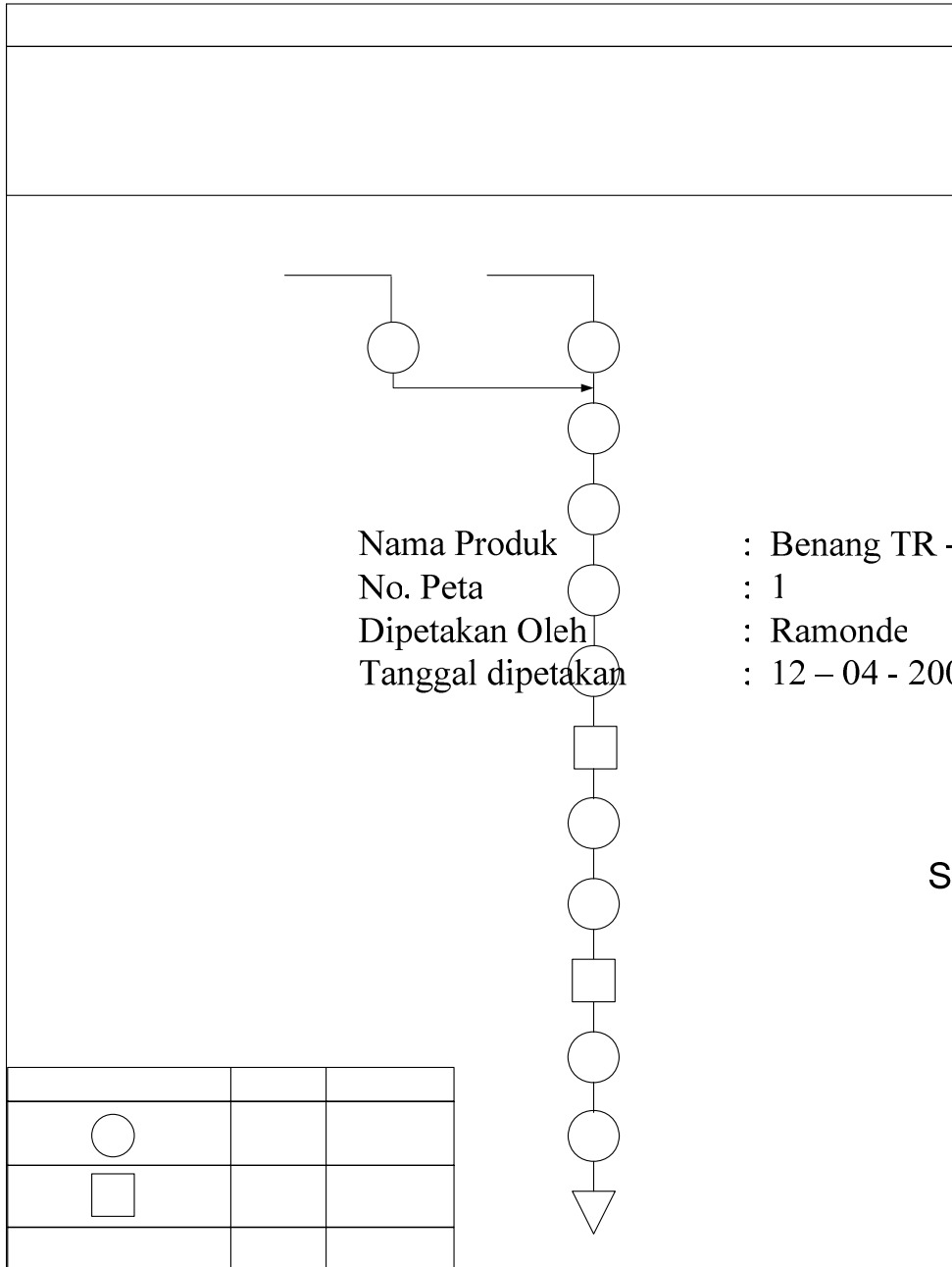
SUPERVISOR 1

MAINTENANCE

OPERATOR

MAINTENANCE

PPO



Nama Produk : Benang TR - 30
No. Peta : 1
Dipetakan Oleh : Ramonde
Tanggal dipetakan : 12 - 04 - 2007

PETA P

Serat Ryon

O-2 (

Data Atribut

k	n	thick	thin	nep
		c	c	c
1	1 km	21	3	37
2	1 km	33	9	51
3	1 km	23	4	44
4	1 km	21	9	35
5	1 km	15	7	36
6	1 km	23	4	36
7	1 km	24	1	47
8	1 km	30	2	43
9	1 km	35	1	54
10	1 km	31	3	51
11	1 km	27	3	36
12	1 km	20	1	34
13	1 km	15	9	26
14	1 km	15	4	30
15	1 km	19	3	53
16	1 km	36	4	56
17	1 km	33	7	57
18	1 km	26	9	52
19	1 km	39	2	41
20	1 km	40	5	51
21	1 km	55	8	45
22	1 km	41	2	58
23	1 km	23	1	40
24	1 km	27	0	38
25	1 km	31	6	57
26	1 km	27	2	44
27	1 km	32	0	45
28	1 km	24	2	35
29	1 km	22	2	38
30	1 km	20	0	31
	Total	828	113	1301

Data Variabel

Cacat Grain

No	cop ke :				X	R
	1	2	3	4		
1	32.4	32.4	33.6	32.9	32.825	1.2
2	33.1	30	33.8	33.1	32.5	3.8
3	32.5	33.3	33.6	33.2	33.15	1.1
4	33.9	33.5	33.9	33.1	33.6	0.8
5	32.7	33.6	33.1	33.3	33.175	0.9
6	32.3	33.5	32.9	33.3	33	1.2
7	33.3	32.9	33	33.5	33.175	0.6
8	33.2	33	30	31.6	31.95	3.2
9	33.5	33.1	33.3	32.9	33.2	0.6
10	32.6	29	32.9	32.8	31.825	3.9
11	32.5	35	33.8	33	33.575	2.5
12	32.2	32.3	33.7	32.9	32.775	1.5
13	32.1	32.4	32.9	33.3	32.675	1.2
14	32.2	32.7	32.7	33.3	32.725	1.1
15	29.5	32	33.2	32.1	31.7	3.7
16	33	33.5	33.3	33.2	33.25	0.5
17	33.5	32.9	32.9	33.3	33.15	0.6
18	33.5	33.4	33.5	33.2	33.4	0.3
19	32.6	33.5	33.3	30	32.35	3.5
20	34.2	35	33.2	32.9	33.825	2.1
21	32.9	33.1	33.1	33.3	33.1	0.4
22	30	32.9	33.3	33.4	32.4	3.4
23	32.2	32.8	33.1	33.5	32.9	1.3
24	30	32.7	29	33.3	31.25	4.3
25	32.8	33.1	32.9	33.2	33	0.4
26	32.7	30	32.9	33.2	32.2	3.2
27	32.3	29	33.1	32.2	31.65	4.1
28	33.3	32.9	33	33.5	33.175	0.6
29	33.5	33.5	32.5	33.1	33.15	1
30	33.9	33.5	29.8	33.9	32.775	4.1
				Total	983.425	65

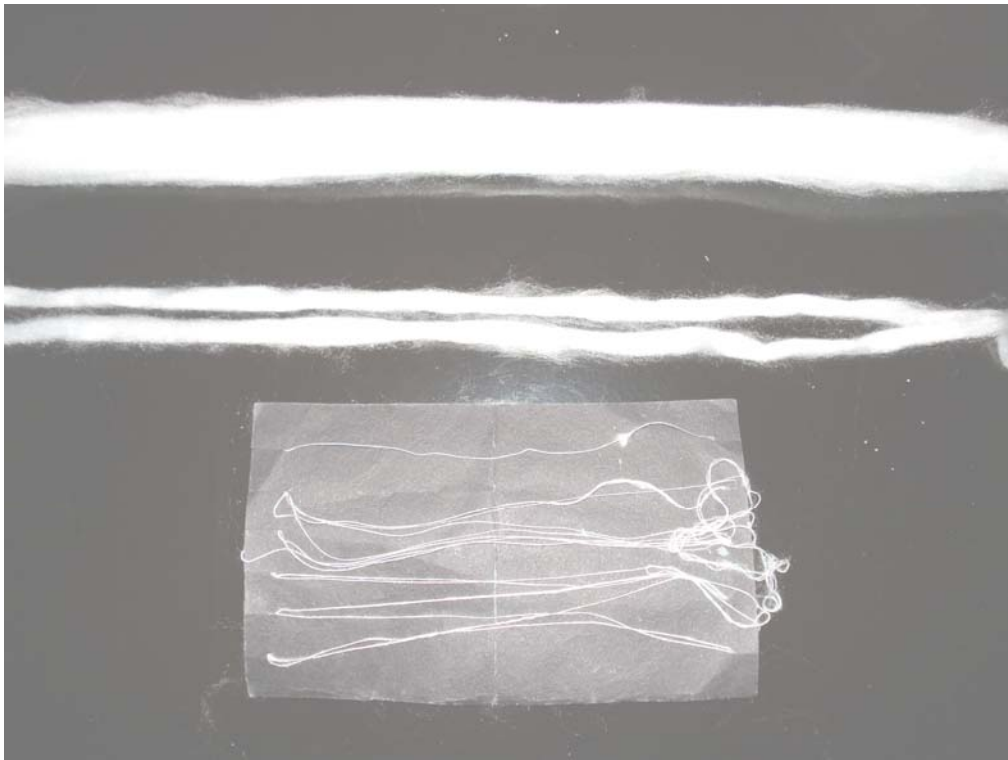
Cacat Twice

No	cop ke :				X	R
	1	2	3	4		
1	16.2	16.2	16.5	16.5	16.35	0.3
2	16.2	15.7	16.5	16.5	16.225	0.8
3	16.3	17	16.2	16.3	16.45	0.8
4	15.9	16.6	16.3	16.2	16.25	0.7
5	16.5	16.4	16.5	16.5	16.475	0.1
6	16.3	16	16.3	16.5	16.275	0.5
7	16.5	15.8	16.5	16.8	16.4	1
8	15.7	16.3	17.1	16.2	16.325	1.4
9	16.3	15.3	16.3	16.3	16.05	1
10	16.5	16.4	16.4	16.3	16.4	0.2
11	17	16.6	16.5	16.5	16.65	0.5
12	16	15.6	16.5	16.5	16.15	0.9
13	16	16.2	16.2	16.6	16.25	0.6
14	16.2	16.2	15.8	16.3	16.125	0.5
15	16.6	16.3	17.1	16.5	16.625	0.8
16	16.5	17.3	16.1	16	16.475	1.3
17	15.7	16.4	16.3	16.4	16.2	0.7
18	16.5	16.5	16.3	16.5	16.45	0.2
19	16.4	16	16.5	16.5	16.35	0.5
20	16.3	17	16	16.5	16.45	1
21	16.4	16.8	17	16.7	16.725	0.6
22	16.5	15.9	16.7	16.5	16.4	0.8
23	16	16.5	16.5	16.5	16.375	0.5
24	16.4	17	16.5	16.5	16.6	0.6
25	16	16.3	15.9	16.3	16.125	0.4
26	16.4	16.2	16.5	16.4	16.375	0.3
27	16.9	17.2	16.7	16.2	16.75	1
28	16.6	16.2	16.2	16.1	16.275	0.5
29	16.2	16.4	16.3	16.3	16.3	0.2
30	15.7	16.5	16	16.4	16.15	0.8
				Total	491	19.7

Cacat Strength

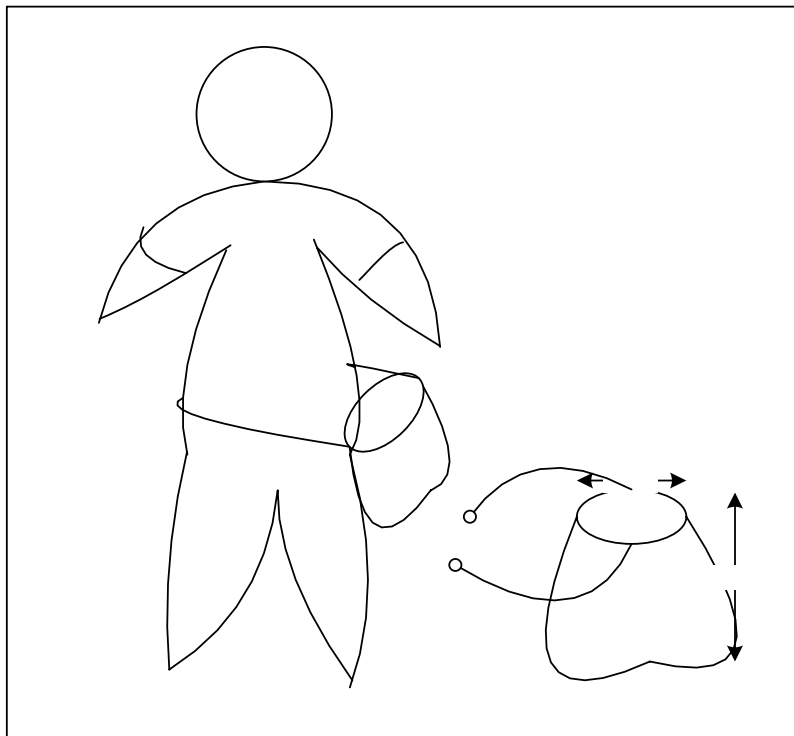
No	cop ke :				X	R
	1	2	3	4		
1	65	65	65	65	65	0
2	64	65	66	64	64.75	2
3	67	65	64	61	64.25	6
4	68	66	68	65	66.75	3
5	67	66	67	62	65.5	5
6	70	69	62	65	66.5	8
7	66	68	65	66	66.25	3
8	65	65	65	69	66	4
9	64	64	66	68	65.5	4
10	67	67	69	65	67	4
11	68	64	61	68	65.25	7
12	66	67	62	64	64.75	5
13	66	66	63	68	65.75	5
14	69	65	61	65	65	8
15	64	63	65	62	63.5	3
16	63	63	62	65	63.25	3
17	64	63	70	66	65.75	7
18	62	65	64	69	65	7
19	68	66	65	68	66.75	3
20	70	64	66	65	66.25	6
21	64	65	62	64	63.75	3
22	66	65	63	68	65.5	5
23	65	66	65	64	65	2
24	66	68	68	68	67.5	2
25	67	64	67	62	65	5
26	68	65	64	64	65.25	4
27	67	61	67	68	65.75	7
28	69	64	65	66	66	5
29	64	70	64	65	65.75	6
30	65	60	65	64	63.5	5
Total					1961.75	137

GAMBAR PRODUK



Keterangan : Gambar produk dari atas sliver , sliver roving dan benang

GAMBAR KANTONG USULAN



GAMBAR ALIRAN PRODUKSI 3 LINE

