

LAMPIRAN A

- **Kuesioner Pendahuluan**
- **Kuesioner Penelitian**
- **Kuesioner Pendahuluan Pengujian 1**
- **Kuesioner Pendahuluan Pengujian 2**
- **Kuesioner Pendahuluan Pengujian 3**
- **Kuesioner Pendahuluan Pengujian 4**
- **Kuesioner Pendahuluan Pengujian 5**
- **Kuesioner Pendahuluan Pengujian 6**
- **Kuesioner Pendahuluan Pengujian 7**
- **Kuesioner Pendahuluan Pengujian 8**
- **Kuesioner Pendahuluan Pengujian 9**
- **Kuesioner Pendahuluan Pengujian 10**

KUESIONER PENDAHULUAN

Kepada Yth,

Bapak/Ibu/Saudara/i Responden konsumen makanan ala barat

Saya memohon untuk kesediaan Anda untuk mengisi kuesioner pendahuluan ini untuk mengetahui atribut-atribut apa saja yang menurut Anda penting dalam mengkonsumsi makanan ala barat dan untuk mengetahui restoran ala barat mana yang sering Anda kunjungi. Atas bantuan dan kesediaannya, saya ucapkan terima kasih.

BERIKAN TANDA CHECKLIST (√) PADA ATRIBUT YANG PENTING DALAM MENGKONSUMSI MAKANAN ALA BARAT (BOLEH LEBIH DARI 1 JAWABAN)

- Rasa makanan yang lezat
- Rasa minuman yang nikmat
- Keanekaragaman jenis makanan
- Keanekaragaman jenis minuman
- Penyajian makanan yang menarik
- Penyajian minuman yang menarik
- Harga sesuai dengan kualitas makanan
- Harga sesuai dengan kualitas minuman
- Harga sesuai dengan porsi makanan yang disajikan
- Lokasi yang mudah untuk dijangkau
- Adanya promosi di media cetak
- Adanya promosi di media elektronik
- Adanya potongan harga untuk pembelian minimum
- Kejelasan dari papan nama
- Keramahan pelayan dalam melayani
- Ketanggapan pelayan dalam melayani
- Kerapihan pelayan
- Kebersihan restoran
- Kebersihan *toilet*
- Tempat parkir yang luas
- Tempat parkir yang aman
- Suasana restoran yang nyaman
- Adanya sarana ibadah untuk Muslim (Mushola)
- Adanya tempat untuk acara khusus (contoh : ulang tahun)
- Adanya TV
- Adanya musik
- Udara yang sejuk
- Pencahayaan ruangan yang baik

- () Jumlah meja yang memadai
 - () Jumlah kursi yang memadai
 - () Tata letak meja yang baik
 - () Tata letak kursi yang baik
 - () Memiliki *eksterior design* yang menarik
 - () Memiliki *interior design* yang menarik
 - () Adanya alternatif pembayaran (*cash / debit / credit*)
 - () Kecepatan dalam penyajian makanan
 - () Kecepatan dalam penyajian minuman
 - () Kecepatan dalam perhitungan pembayaran
 - () Ketepatan dalam perhitungan pembayaran
 - () Kecepatan dalam menangani pembayaran tunai (contoh : pengembalian uang)
 - () Kecepatan dalam menangani pembayaran *non* tunai (contoh : pemberian struk)
- Lain-lain :
-

- Selain ***Et Cetera Restaurant***, restoran ala barat yang sering Anda kunjungi (boleh lebih dari 1 jawaban) :

() *Blackpepper Restaurant*

() *Oishii Restaurant*

() *Speak Easy Restaurant*

() *Swiss Butcher Restaurant*

Lainnya.....

.....

Terima Kasih Atas Kediaan Bapak/Ibu/Saudara/I Mengisi Kuesioner Ini

KUESIONER PENELITIAN

Kepada Yth,

Bapak/Ibu/Saudara/i Responden yang pernah mengkonsumsi makanan ala barat di *Et Cetera Restaurant, Blackpepper Restaurant, dan Speak Easy Restaurant*

Saya mohon kesediaan Anda untuk mengisi kuesioner penelitian ini. Hal ini dilakukan dalam rangka penyusunan Tugas Akhir pada jurusan Teknik Industri di Universitas Kristen Maranatha yang berjudul “Analisis Persaingan Restoran Ala Barat (Studi Kasus di Et Cetera Restaurant, Bandung)” Atas bantuan dan kesediaannya, saya ucapkan terima kasih.

Hormat Saya,

Meliyana Iryani

BAGIAN I

Cara Pengisian :

Berikan tanda checklist (√) pada tanda kurung di bawah ini yang sesuai dengan Bapak/Ibu/Saudara/i.

1. Jenis kelamin Anda :

Laki-laki

Perempuan

2. Usia Anda saat ini :

15 – 19 tahun

31 - 40 tahun

20 - 30 tahun

> 40 tahun

3. Pekerjaan Anda saat ini :
- () Pelajar/Mahasiswa () Pegawai Negeri
 () Wiraswasta () Pegawai Swasta
 () Lainnya.....
- 4a. Jika Anda pelajar/mahasiswa, uang saku Anda per bulan :
- () ≤ 500 ribu () $1 \text{ juta} < \text{uang saku} \leq 1.5 \text{ juta}$
 () $500 \text{ ribu} < \text{uang saku} \leq 1 \text{ juta}$ () $> 1.5 \text{ juta}$
- 4b. Jika Anda bekerja, penghasilan Anda per bulan :
- () $1 \text{ juta} < \text{penghasilan} \leq 2 \text{ juta}$ () $4 \text{ juta} < \text{penghasilan} \leq 7 \text{ juta}$
 () $2 \text{ juta} < \text{penghasilan} \leq 4 \text{ juta}$ () $> 7 \text{ juta}$
5. Lokasi tempat tinggal Anda :
- () Bandung Timur () Bandung Barat
 () Bandung Selatan () Bandung Utara
 () Lainnya.....
6. Tujuan Anda ke *Et Cetera Restaurant* :
- () Makan () *Meeting*
 () Perayaan Ulang Tahun () Arisan
 () Lainnya.....
7. Anda datang ke *Et Cetera Restaurant* dengan :
- () Teman () Keluarga
 () Saudara () Pacar
 () Rekan Kerja () Lainnya.....

BAGIAN II

Cara Pengisian :

Berikan tanda checklist (\checkmark) pada :

- Kolom sebelah kiri, Anda diminta untuk menilai seberapa penting atribut tersebut dalam memilih restoran ala barat.

Keterangan :

STP : Sangat Tidak Penting

P : Penting

TP : Tidak Penting

SP : Sangat Penting

- Kolom sebelah kanan, Anda diminta untuk menilai seberapa puas Anda pada *Et Cetera Restaurant* terhadap atribut tersebut.

Keterangan :

STPu : Sangat Tidak Puas

Pu : Puas

TPu : Tidak Puas

SPu : Sangat Puas

TINGKAT KEPENTINGAN				No	ATRIBUT	TINGKAT KEPUASAN			
STP	TP	P	SP			STPu	TPu	Pu	SPu
				1	Rasa makanan yang enak				
				2	Rasa minuman yang enak				
				3	Keanekaragaman jenis makanan				
				4	Keanekaragaman jenis minuman				
				5	Penyajian makanan yang menarik				
				6	Penyajian minuman yang menarik				
				7	Harga sesuai dengan kualitas makanan				
				8	Harga sesuai dengan kualitas minuman				
				9	Harga sesuai dengan porsi makanan yang disajikan				
				10	Lokasi yang mudah untuk dijangkau				
				11	Keramahan pelayan dalam melayani				
				12	Ketanggapan pelayan dalam melayani				
				13	Kebersihan restoran				
				14	Kebersihan <i>toilet</i>				
				15	Tempat parkir yang aman				
				16	Suasana restoran yang tenang				
				17	Adanya musik				
				18	Temperatur udara yang sejuk				
				19	Pencahayaan ruangan yang baik				
				20	Memiliki dekorasi ruangan yang menarik				
				21	Adanya alternatif pembayaran (<i>cash / debit / credit</i>)				
				22	Kecepatan dalam penyajian makanan				
				23	Kecepatan dalam penyajian minuman				
				24	Ketepatan dalam perhitungan pembayaran				

BAGIAN III

Cara Pengisian :

Bandingkan atribut pada ketiga restoran tersebut dengan memberikan ranking 1, ranking 2, dan ranking 3. Ranking 1 jika menurut Anda restoran tersebut terbaik pertama, ranking 2 jika menurut Anda restoran tersebut terbaik kedua, dan ranking 3 jika menurut Anda restoran tersebut terbaik ketiga.

No	Atribut	Restoran		
		<i>Et Cetera</i>	<i>Blackpepper</i>	<i>Speak Easy</i>
1	Rasa makanan yang enak			
2	Rasa minuman yang enak			
3	Keanekaragaman jenis makanan			
4	Keanekaragaman jenis minuman			
5	Penyajian makanan yang menarik			
6	Penyajian minuman yang menarik			
7	Harga sesuai dengan kualitas makanan			
8	Harga sesuai dengan kualitas minuman			
9	Harga sesuai dengan porsi makanan yang disajikan			
10	Lokasi yang mudah untuk dijangkau			
11	Keramahan pelayan dalam melayani			
12	Ketanggapan pelayan dalam melayani			
13	Kebersihan restoran			
14	Kebersihan <i>toilet</i>			
15	Tempat parkir yang aman			
16	Suasana restoran yang tenang			
17	Adanya musik			
18	Temperatur udara yang sejuk			
19	Pencahayaan ruangan yang baik			
20	Memiliki dekorasi ruangan yang menarik			
21	Adanya alternatif pembayaran (<i>cash / debit / credit</i>)			
22	Kecepatan dalam penyajian makanan			
23	Kecepatan dalam penyajian minuman			
24	Ketepatan dalam perhitungan pembayaran			

Terima Kasih Atas Kesediaan Bapak/Ibu/Saudara/I Mengisi Kuesioner Ini

Kuesioner Pendahuluan Pengujian 2

Responden	Atribut yang diuji																																									Ri	R _i ²		
	1	2	3	4	5	6	7	8	9	10	11	12	13	14	15	16	17	18	19	20	21	22	24	25	26	27	28	29	30	31	32	33	34	35	36	37	38	39	40	41					
1	1	1	1	1	0	0	1	1	1	1	1	0	1	0	1	1	1	1	1	0	1	1	0	0	1	0	0	1	1	0	0	1	1	1	1	1	1	1	1	1	1	1	28	784	
2	1	1	1	1	1	1	1	1	1	1	0	0	0	1	1	0	1	1	0	0	1	0	0	1	1	1	1	1	1	0	1	1	0	0	1	1	1	1	1	0	1	0	0	24	576
3	1	1	1	0	1	0	1	1	1	1	1	1	1	1	1	1	1	1	1	0	1	1	0	0	1	1	1	0	0	0	0	1	1	1	1	1	1	1	1	1	1	1	1	30	900
4	1	1	1	1	1	1	1	1	1	1	0	0	1	1	1	1	1	0	0	1	1	0	0	1	1	1	1	1	1	1	1	0	1	1	1	1	1	1	1	1	1	1	1	32	1024
5	1	1	1	1	1	1	0	0	1	0	0	1	0	1	0	1	0	0	1	1	0	0	1	1	0	0	1	1	0	0	0	0	1	1	1	1	1	1	0	0	0	0	20	400	
6	1	1	0	0	1	1	1	1	1	1	0	0	1	1	0	1	1	0	1	1	0	1	1	0	1	0	1	0	0	0	0	1	1	1	1	0	0	0	0	0	0	0	22	484	
7	0	0	0	0	0	0	1	1	0	1	0	0	0	1	0	0	1	1	0	0	1	0	0	0	0	1	1	1	1	1	0	0	0	0	1	1	0	1	0	0	0	15	225		
8	1	1	1	1	0	0	0	0	1	1	1	1	1	1	1	1	1	1	1	0	0	0	0	1	1	1	0	0	0	0	0	0	0	1	0	1	1	1	1	1	1	1	25	625	
9	1	1	1	1	1	1	0	0	0	0	0	0	0	1	1	1	1	1	1	1	1	0	1	1	1	1	1	0	0	1	1	1	1	1	1	1	1	1	1	1	1	1	29	841	
10	1	1	0	1	1	1	1	0	0	1	0	1	0	1	1	1	1	1	0	0	1	0	0	1	1	1	1	1	1	1	1	1	1	1	1	1	0	0	1	0	0	26	676		
11	1	1	1	1	1	1	0	0	1	0	0	0	1	0	1	1	1	1	1	1	1	0	0	1	1	0	0	1	1	0	0	1	1	0	1	1	0	0	1	0	0	21	441		
12	1	1	1	1	1	1	1	1	1	1	0	1	0	1	1	1	1	1	1	1	1	1	1	1	1	1	1	1	1	1	1	1	1	1	1	1	1	1	1	1	1	1	37	1369	
13	1	1	0	0	1	1	1	1	0	1	1	1	0	1	1	0	1	1	1	1	1	1	0	1	1	1	0	0	0	0	0	0	1	1	1	1	1	0	1	0	0	26	676		
14	1	1	1	1	1	1	1	1	1	0	0	0	1	0	0	1	1	1	1	1	1	0	0	1	1	1	1	1	1	1	1	0	1	0	1	1	0	0	0	0	0	26	676		
15	1	0	1	0	1	0	1	0	1	1	0	1	0	1	1	1	1	0	0	0	1	0	0	0	1	0	1	1	1	1	1	1	0	1	0	0	1	0	0	1	0	0	21	441	
16	1	1	1	1	1	1	1	1	1	0	0	1	0	1	0	1	1	1	1	1	1	1	0	0	1	1	1	0	0	0	0	0	1	1	1	1	1	0	0	0	0	25	625		
17	1	1	1	1	1	1	1	1	0	1	1	0	1	1	1	1	1	1	1	1	0	0	1	1	0	1	1	0	1	1	1	1	1	1	1	1	1	1	1	0	0	32	1024		
18	1	1	1	1	1	1	1	1	1	0	1	1	1	1	1	1	1	1	0	1	1	0	1	1	1	1	1	1	1	1	1	1	1	1	1	1	0	1	1	1	35	1225			
19	1	0	1	0	1	0	1	0	0	1	1	1	0	1	1	1	1	1	1	1	1	0	1	1	1	1	0	0	0	0	0	0	1	1	1	1	0	0	0	0	22	484			
20	1	1	1	1	1	1	1	1	0	1	1	1	1	1	1	1	1	1	1	1	1	0	0	1	1	1	0	0	1	1	1	1	1	1	1	1	1	1	1	1	1	34	1156		
21	1	1	0	0	1	1	1	1	0	1	1	1	0	1	0	0	1	1	1	1	1	1	0	1	1	1	1	1	1	0	0	1	1	1	1	1	1	0	0	0	25	625			
22	1	1	1	1	1	1	1	1	1	0	1	1	1	1	1	1	1	0	1	1	0	0	1	1	1	0	0	0	0	0	1	1	1	1	1	1	1	1	1	1	1	31	961		
23	1	1	1	1	1	1	1	1	0	0	0	0	1	1	0	1	1	0	0	1	0	0	0	0	0	0	0	0	0	0	0	0	0	0	0	0	0	0	1	1	1	1	1	20	400
24	1	1	1	1	0	0	1	1	1	1	0	1	1	1	1	1	0	1	1	0	0	0	1	1	1	1	0	0	0	0	0	1	1	1	1	1	1	1	1	1	1	28	784		
25	1	1	1	1	1	1	1	1	1	1	1	0	1	1	0	1	1	1	1	1	1	1	1	1	1	1	0	0	1	1	1	1	1	1	1	1	1	1	1	1	1	35	1225		
26	1	0	1	1	1	0	1	1	1	1	1	0	1	0	1	1	1	0	1	1	1	0	1	1	1	1	1	1	1	1	1	1	1	1	1	0	0	1	1	1	31	961			
27	1	1	1	1	1	1	1	1	1	0	1	0	1	1	0	1	1	0	1	1	1	1	1	1	1	1	1	0	0	1	1	0	0	1	1	1	1	1	1	1	1	31	961		
28	1	1	1	1	1	1	1	1	0	1	1	1	0	1	1	0	1	1	0	1	1	0	1	1	0	0	1	1	0	0	1	1	1	1	1	0	1	1	1	1	29	841			
29	1	1	1	1	1	1	1	1	1	1	0	1	0	1	1	1	1	0	1	1	0	0	1	1	1	1	1	1	1	1	1	1	1	1	1	1	1	1	1	1	34	1156			
30	1	1	1	1	1	1	1	1	1	1	1	1	1	0	1	0	1	0	1	1	1	1	1	1	0	1	1	1	1	1	1	1	1	1	1	0	0	1	1	1	33	1089			
Ci	29	26	25	23	26	22	26	23	22	24	13	21	8	29	23	18	30	26	13	25	27	8	8	26	24	24	16	15	16	15	21	24	24	30	25	14	24	17	17	827	23655				
C _i ²	841	676	625	529	676	484	676	529	484	576	169	441	64	841	529	324	900	676	169	625	729	64	64	676	576	576	256	225	256	225	441	576	576	900	625	196	576	289	289	18949					

Kuesioner Pendahuluan Pengujian 3

Responden	Atribut yang diuji																																									Ri	Ri ²
	1	2	3	4	5	6	7	8	9	10	11	13	15	16	17	18	19	20	21	22	26	27	28	29	30	31	32	33	34	35	36	37	38	39	40	41							
1	1	1	1	1	0	0	1	1	1	1	0	1	1	1	1	1	0	1	1	1	0	0	1	1	0	0	1	1	1	1	1	1	1	1	1	1	1	1	1	28	784		
2	1	1	1	1	1	1	1	1	1	0	0	1	1	0	1	1	0	0	1	1	1	1	1	0	1	0	0	0	1	1	1	0	1	0	0	24	576						
3	1	1	1	0	1	0	1	1	1	1	1	1	1	1	1	1	1	1	1	1	1	0	1	1	1	1	1	0	0	0	1	1	1	1	1	1	1	1	29	841			
4	1	1	1	1	1	1	1	1	1	0	0	1	1	1	1	0	0	1	1	1	1	1	1	1	1	1	1	0	1	1	1	1	1	1	1	1	1	1	31	961			
5	1	1	1	1	1	1	0	0	1	0	0	1	1	0	0	1	0	0	1	1	1	1	1	0	0	0	0	1	1	1	1	1	0	0	0	0	20	400					
6	1	1	0	0	1	1	1	1	1	0	1	0	1	1	0	1	1	0	1	1	1	0	1	0	0	0	1	1	1	1	0	0	0	0	0	0	21	441					
7	0	0	0	0	0	0	1	1	0	1	0	0	1	0	0	1	1	0	0	1	1	0	0	1	1	1	1	0	0	0	1	1	0	1	0	0	15	225					
8	1	1	1	1	0	0	0	0	1	1	1	1	1	1	1	1	1	0	0	1	1	1	0	0	0	0	0	1	0	1	1	1	1	1	1	1	1	24	576				
9	1	1	1	1	1	1	0	0	0	0	0	0	1	1	1	1	1	1	1	1	1	1	1	0	0	1	1	1	1	1	1	1	1	1	1	1	1	28	784				
10	1	1	0	1	1	1	1	0	0	1	0	1	1	1	1	1	0	1	1	1	1	0	1	1	1	1	1	1	1	1	0	0	1	0	0	0	26	676					
11	1	1	1	1	1	1	0	0	0	1	0	0	1	0	1	1	1	1	1	1	1	1	1	0	0	0	0	1	1	0	1	0	1	0	0	0	21	441					
12	1	1	1	1	1	1	1	1	1	0	1	1	1	1	1	1	1	1	1	1	1	1	1	1	1	1	1	1	1	1	1	1	1	1	1	1	1	35	1225				
13	1	1	0	0	1	1	1	0	1	1	1	1	1	0	1	1	1	1	1	1	1	1	1	0	0	0	1	1	1	1	1	0	1	0	0	25	625						
14	1	1	1	1	1	1	1	1	0	0	1	0	0	1	1	1	1	1	1	1	1	1	1	1	1	1	1	0	1	0	1	0	1	0	0	0	26	676					
15	1	0	1	0	1	0	1	0	1	1	0	1	1	1	1	0	0	0	1	0	1	0	1	1	1	1	1	1	0	1	0	0	1	0	0	21	441						
16	1	1	1	1	1	1	1	1	0	0	1	1	0	1	1	1	1	1	1	1	1	1	0	0	0	0	1	1	1	1	1	0	0	0	0	25	625						
17	1	1	1	1	1	1	1	1	0	1	1	1	1	1	1	1	1	1	1	1	1	0	1	1	1	1	1	1	1	1	1	1	1	1	1	0	32	1024					
18	1	1	1	1	1	1	1	1	1	0	1	1	1	1	1	1	0	1	1	1	1	1	1	1	1	1	1	1	1	1	1	1	1	0	1	1	33	1089					
19	1	0	1	0	1	0	1	0	0	1	1	1	1	1	1	1	1	1	1	1	1	1	0	0	0	0	0	1	1	1	0	0	0	0	0	21	441						
20	1	1	1	1	1	1	1	1	0	1	1	1	1	1	1	1	1	1	1	1	1	1	0	0	1	1	1	1	1	1	1	1	1	1	1	1	33	1089					
21	1	1	0	0	1	1	1	1	0	1	1	1	0	0	1	1	1	0	1	1	0	1	1	1	1	1	0	0	1	1	1	1	0	0	0	24	576						
22	1	1	1	1	1	1	1	1	1	0	1	1	1	1	1	1	1	1	1	1	1	1	0	0	0	0	1	1	1	1	1	1	1	1	1	1	30	900					
23	1	1	1	1	1	1	1	1	0	0	0	1	1	0	1	1	0	0	1	0	0	0	0	0	0	0	0	0	0	0	1	1	1	1	1	1	20	400					
24	1	1	1	1	0	0	1	1	1	1	0	1	1	1	1	1	0	1	1	0	1	1	1	1	1	0	0	0	1	1	1	1	1	1	1	1	27	729					
25	1	1	1	1	1	1	1	1	1	1	1	1	1	0	1	1	1	1	1	1	1	1	0	0	1	1	1	1	1	1	1	1	1	1	1	1	33	1089					
26	1	0	1	1	1	0	1	1	1	1	1	1	0	1	1	1	0	1	1	1	1	1	1	1	1	1	1	1	1	1	1	1	0	0	1	1	30	900					
27	1	1	1	1	1	1	1	1	0	1	1	1	0	1	1	0	1	1	1	1	1	0	0	1	1	0	0	1	1	1	1	1	1	1	1	1	29	841					
28	1	1	1	1	1	1	1	0	1	1	1	1	0	1	1	0	1	1	1	0	0	1	1	0	0	1	1	1	1	0	1	1	1	1	1	1	28	784					
29	1	1	1	1	1	1	1	1	0	1	1	1	1	1	0	1	1	1	1	1	1	1	1	1	1	1	1	1	1	1	1	1	1	1	1	1	34	1156					
30	1	1	1	1	1	1	1	1	1	1	1	0	1	0	1	0	1	1	1	1	0	1	1	1	1	1	1	1	1	1	0	0	1	1	1	1	30	900					
Ci	29	26	25	23	26	22	26	23	22	24	13	21	29	23	18	30	26	13	25	27	26	24	24	16	15	16	15	21	24	24	30	25	14	24	17	17	803	22215					
Ci ²	841	676	625	529	676	484	676	529	484	576	169	441	841	529	324	900	676	169	625	729	676	576	576	256	225	256	225	441	576	576	900	625	196	576	289	289	18757						

Kuesioner Penilaian Pengujian 4

Responden	Atribut yang diuji																																									R _i	R _i ²
	1	2	3	4	5	6	7	8	9	10	13	15	16	17	18	19	21	22	26	27	28	29	30	31	32	33	34	35	36	37	38	39	40	41									
1	1	1	1	1	0	0	1	1	1	1	1	1	1	1	1	1	1	1	1	0	0	1	1	0	0	1	1	1	1	1	1	1	1	1	1	1	1	1	1	28	784		
2	1	1	1	1	1	1	1	1	1	1	0	1	1	0	1	1	0	1	1	1	1	1	0	1	0	0	0	0	1	1	1	0	1	0	0	0	0	0	0	24	576		
3	1	1	1	0	1	0	1	1	1	1	1	1	1	1	1	1	1	1	1	1	1	0	0	0	0	1	1	1	1	1	1	1	1	1	1	1	1	1	1	28	784		
4	1	1	1	1	1	1	1	1	1	1	0	1	1	1	1	0	1	1	1	1	1	1	1	1	1	0	1	1	1	1	1	1	1	1	1	1	1	1	1	31	961		
5	1	1	1	1	1	1	0	0	1	0	1	1	0	0	1	0	0	1	0	1	1	1	1	1	0	0	0	1	1	1	1	1	0	0	0	0	0	0	0	20	400		
6	1	1	0	0	1	1	1	1	1	1	0	1	1	0	1	1	1	1	1	0	1	0	0	0	0	1	1	1	1	0	0	0	0	0	0	0	0	0	0	20	400		
7	0	0	0	0	0	0	1	1	0	1	0	1	0	0	1	1	0	1	0	0	1	1	1	1	1	1	0	0	0	1	1	0	1	0	1	0	0	0	15	225			
8	1	1	1	1	0	0	0	0	1	1	1	1	1	1	1	0	0	1	1	1	0	0	0	0	0	0	1	0	1	1	1	1	1	1	1	1	1	1	22	484			
9	1	1	1	1	1	1	0	0	0	0	0	1	1	1	1	1	1	1	1	1	1	1	0	0	1	1	1	1	1	1	1	1	1	1	1	1	1	1	1	27	729		
10	1	1	0	1	1	1	1	0	0	1	1	1	1	1	1	1	0	1	1	1	1	1	1	1	1	1	1	1	1	1	1	0	1	0	0	0	0	0	26	676			
11	1	1	1	1	1	1	0	0	0	1	0	1	0	1	1	1	1	1	1	1	0	0	0	0	0	1	1	0	1	1	0	1	0	1	0	0	0	0	20	400			
12	1	1	1	1	1	1	1	1	1	1	1	1	1	1	1	1	1	1	1	1	1	1	1	1	1	1	1	1	1	1	1	1	1	1	1	1	1	1	34	1156			
13	1	1	0	0	1	1	1	1	0	1	1	1	1	0	1	1	1	1	1	1	1	0	0	0	0	1	1	1	1	1	1	0	1	0	0	0	0	23	529				
14	1	1	1	1	1	1	1	1	1	1	0	1	0	0	1	1	1	1	1	1	1	1	1	1	1	0	1	0	1	0	1	0	0	0	0	0	0	0	25	625			
15	1	0	1	0	1	0	1	0	1	1	1	1	1	1	1	0	0	1	0	1	0	1	0	1	1	1	1	1	0	1	0	1	0	0	0	0	0	0	21	441			
16	1	1	1	1	1	1	1	1	1	0	1	1	0	1	1	1	1	1	1	1	1	0	0	0	0	1	1	1	1	1	0	0	0	0	0	0	0	0	24	576			
17	1	1	1	1	1	1	1	1	1	0	1	1	1	1	1	1	1	1	1	1	1	0	1	1	1	1	1	1	1	1	1	1	1	1	1	1	1	0	30	900			
18	1	1	1	1	1	1	1	1	1	1	1	1	1	1	1	1	1	1	1	1	1	1	1	1	1	1	1	1	1	1	1	1	1	1	1	1	1	1	33	1089			
19	1	0	1	0	1	0	1	0	0	1	1	1	1	1	1	1	1	1	1	1	1	0	0	0	0	0	1	1	1	0	0	0	0	0	0	0	0	0	19	361			
20	1	1	1	1	1	1	1	1	1	0	1	1	1	1	1	1	1	1	1	1	1	0	0	1	1	1	1	1	1	1	1	1	1	1	1	1	1	1	31	961			
21	1	1	0	0	1	1	1	1	0	1	1	1	0	0	1	1	1	0	1	1	1	1	1	0	0	1	1	1	1	1	0	0	0	0	0	0	0	0	22	484			
22	1	1	1	1	1	1	1	1	1	1	1	1	1	1	1	1	1	1	1	1	1	0	0	0	0	1	1	1	1	1	1	1	1	1	1	1	1	1	30	900			
23	1	1	1	1	1	1	1	1	1	0	0	1	1	0	1	1	0	1	0	0	0	0	0	0	0	0	0	0	0	0	0	1	1	1	1	1	1	1	20	400			
24	1	1	1	1	0	0	1	1	1	0	1	1	1	1	1	1	0	1	1	1	0	1	1	1	0	0	0	1	1	1	1	1	1	1	1	1	1	1	26	676			
25	1	1	1	1	1	1	1	1	1	1	1	1	1	0	1	1	1	1	1	1	1	1	0	0	1	1	1	1	1	1	1	1	1	1	1	1	1	1	31	961			
26	1	0	1	1	1	0	1	1	1	1	1	0	1	1	1	1	1	1	1	1	1	1	1	1	1	1	1	1	1	1	0	0	1	1	1	1	1	29	841				
27	1	1	1	1	1	1	1	1	1	1	1	1	1	0	1	1	1	1	1	1	1	1	0	0	1	1	0	0	1	1	1	1	1	1	1	1	1	29	841				
28	1	1	1	1	1	1	1	1	0	1	1	1	1	0	1	1	1	1	0	0	1	1	0	0	1	1	1	1	1	1	0	1	1	1	1	1	1	27	729				
29	1	1	1	1	1	1	1	1	1	1	1	1	1	1	1	1	1	1	1	1	1	1	1	1	1	1	1	1	1	1	1	1	1	1	1	1	1	34	1156				
30	1	1	1	1	1	1	1	1	1	1	0	1	0	1	0	1	1	1	0	1	1	1	1	1	1	1	1	1	1	1	1	1	0	0	1	1	1	28	784				
C _i	29	26	25	23	26	22	26	23	22	24	21	29	23	18	30	26	25	27	26	24	24	16	15	16	15	21	24	24	30	25	14	24	17	17	777	20829							
C _i ²	841	676	625	529	676	484	676	529	484	576	441	841	529	324	900	676	625	729	676	576	576	256	225	256	225	441	576	576	900	625	196	576	289	289	18419								

Kuesioner Pendahuluan Pengujian 5

Responden	Atribut yang diuji																																									Ri	R _i ²	
	1	2	3	4	5	6	7	8	9	10	13	15	16	17	18	19	21	22	26	27	28	29	30	31	32	33	34	35	36	37	39	40	41											
1	1	1	1	1	0	0	1	1	1	1	1	1	1	1	1	1	1	1	1	0	0	1	1	0	0	1	1	1	1	1	1	1	1	1	1	1	1	1	1	1	27	729		
2	1	1	1	1	1	1	1	1	1	1	0	1	1	0	1	1	0	1	1	1	1	1	0	1	0	0	0	0	1	1	1	1	1	0	0	0	0	0	0	24	576			
3	1	1	1	0	1	0	1	1	1	1	1	1	1	1	1	1	1	1	1	1	1	0	0	0	0	1	1	1	1	1	1	1	1	1	1	1	1	1	1	1	1	27	729	
4	1	1	1	1	1	1	1	1	1	1	0	1	1	1	1	0	1	1	1	1	1	1	1	1	1	0	1	1	1	1	1	1	1	1	1	1	1	1	1	1	1	1	30	900
5	1	1	1	1	1	1	0	0	1	0	1	1	0	0	1	0	1	1	1	1	1	1	0	0	0	0	1	1	1	1	1	1	1	0	0	0	0	0	0	0	0	20	400	
6	1	1	0	0	1	1	1	1	1	0	1	1	0	1	1	1	1	1	1	1	0	1	0	0	0	1	1	1	1	1	0	0	0	0	0	0	0	0	0	0	0	20	400	
7	0	0	0	0	0	0	1	1	0	1	0	1	0	0	1	1	0	1	0	0	1	1	1	1	1	0	0	0	1	1	1	0	0	0	1	1	1	0	0	0	0	15	225	
8	1	1	1	1	0	0	0	0	1	1	1	1	1	1	1	1	0	0	1	1	1	0	0	0	0	0	1	0	1	1	1	1	1	1	1	1	1	1	1	1	1	21	441	
9	1	1	1	1	1	1	0	0	0	0	0	1	1	1	1	1	1	1	1	1	1	1	0	0	1	1	1	1	1	1	1	1	1	1	1	1	1	1	1	1	1	1	26	676
10	1	1	0	1	1	1	1	0	0	1	1	1	1	1	1	1	1	0	1	1	1	1	1	1	1	1	1	1	1	1	1	1	0	1	0	0	0	0	0	0	0	26	676	
11	1	1	1	1	1	1	0	0	0	1	0	1	0	1	1	1	1	1	1	1	1	0	0	0	0	0	1	1	0	1	1	1	1	1	0	0	0	0	0	0	0	20	400	
12	1	1	1	1	1	1	1	1	1	1	1	1	1	1	1	1	1	1	1	1	1	1	1	1	1	1	1	1	1	1	1	1	1	1	1	1	1	1	1	1	1	1	33	1089
13	1	1	0	0	1	1	1	1	0	1	1	1	1	0	1	1	1	1	1	1	1	0	0	1	1	1	1	1	1	1	1	1	1	1	1	1	1	1	0	0	0	23	529	
14	1	1	1	1	1	1	1	1	1	1	0	1	0	0	1	1	1	1	1	1	1	1	1	1	1	1	0	1	0	1	1	0	0	0	0	0	0	0	0	0	0	25	625	
15	1	0	1	0	1	0	1	0	1	1	1	1	1	1	1	0	0	1	0	1	0	1	0	1	1	1	1	1	1	0	1	0	1	0	1	0	1	0	0	0	0	21	441	
16	1	1	1	1	1	1	1	1	1	0	1	1	0	1	1	1	1	1	1	1	1	1	0	0	0	0	1	1	1	1	1	1	0	0	0	0	0	0	0	0	0	24	576	
17	1	1	1	1	1	1	1	1	1	0	1	1	1	1	1	1	1	1	1	1	1	0	1	1	1	1	1	1	1	1	1	1	1	1	1	1	1	1	1	0	0	29	841	
18	1	1	1	1	1	1	1	1	1	1	1	1	1	1	1	1	1	1	1	1	1	1	1	1	1	1	1	1	1	1	1	1	1	1	1	1	1	1	1	1	1	1	33	1089
19	1	0	1	0	1	0	1	0	0	1	1	1	1	1	1	1	1	1	1	1	1	1	0	0	0	0	0	0	1	1	1	0	0	0	0	0	0	0	0	0	0	19	361	
20	1	1	1	1	1	1	1	1	1	0	1	1	1	1	1	1	1	1	1	1	1	1	0	0	1	1	1	1	1	1	1	1	1	1	1	1	1	1	1	1	1	1	30	900
21	1	1	0	0	1	1	1	1	0	1	1	1	0	0	1	1	1	0	1	1	1	1	1	1	1	1	1	1	1	1	1	1	1	1	1	1	0	0	0	0	0	22	484	
22	1	1	1	1	1	1	1	1	1	1	1	1	1	1	1	1	1	1	1	1	1	1	0	0	0	0	1	1	1	1	1	1	1	1	1	1	1	1	1	1	1	1	29	841
23	1	1	1	1	1	1	1	1	1	0	0	1	1	0	1	1	0	1	0	0	0	0	0	0	0	0	0	0	0	0	0	0	0	0	0	0	0	0	0	0	0	0	19	361
24	1	1	1	1	0	0	1	1	1	1	0	1	1	1	1	1	1	1	0	1	1	1	1	1	0	0	0	0	0	0	1	1	1	1	1	1	1	1	1	1	1	1	25	625
25	1	1	1	1	1	1	1	1	1	1	1	1	1	0	1	1	1	1	1	1	1	1	0	0	1	1	1	1	1	1	1	1	1	1	1	1	1	1	1	1	1	1	30	900
26	1	0	1	1	1	0	1	1	1	1	1	1	0	1	1	1	1	1	1	1	1	1	1	1	1	1	1	1	1	1	1	1	1	1	0	1	1	1	1	1	1	1	29	841
27	1	1	1	1	1	1	1	1	1	1	1	1	1	0	1	1	1	1	1	1	1	1	1	0	0	1	1	0	0	1	1	1	1	1	1	1	1	1	1	1	1	1	28	784
28	1	1	1	1	1	1	1	1	0	1	1	1	1	0	1	1	1	1	1	1	0	0	1	1	0	0	1	1	1	1	1	1	1	1	1	1	1	1	1	1	1	1	27	729
29	1	1	1	1	1	1	1	1	1	1	1	1	1	1	1	1	1	1	1	1	1	1	1	1	1	1	1	1	1	1	1	1	1	1	1	1	1	1	1	1	1	1	33	1089
30	1	1	1	1	1	1	1	1	1	1	1	0	1	0	1	0	1	1	1	0	1	1	1	1	1	1	1	1	1	1	1	1	1	1	0	1	1	1	1	1	1	28	784	
Ci	29	26	25	23	26	22	26	23	22	24	21	29	23	18	30	26	25	27	26	24	24	16	15	16	15	21	24	24	30	25	24	17	17	763	20041									
C ²	841	676	625	529	676	484	676	529	484	576	441	841	529	324	900	676	625	729	676	576	576	256	225	256	225	441	576	576	900	625	576	289	289	18223										

Kuesioner Pendahuluan Pengujian 6

Responden	Atribut yang diuji																																									Ri	R _i ²
	1	2	3	4	5	6	7	8	9	10	13	15	16	17	18	19	21	22	26	27	28	29	31	33	34	35	36	37	39	40	41												
1	1	1	1	1	0	0	1	1	1	1	1	1	1	1	1	1	1	1	1	0	0	1	0	1	1	1	1	1	1	1	1	1	1	1	1	1	1	1	26	676			
2	1	1	1	1	1	1	1	1	1	1	1	0	1	1	0	1	1	0	1	1	1	1	1	1	0	0	1	1	1	1	1	1	0	0	0	0	24	576					
3	1	1	1	0	1	0	1	1	1	1	1	1	1	1	1	1	1	1	1	1	1	0	0	1	1	1	1	1	1	1	1	1	1	1	1	1	1	1	27	729			
4	1	1	1	1	1	1	1	1	1	1	1	0	1	1	1	1	0	1	1	1	1	1	1	1	0	1	1	1	1	1	1	1	1	1	1	1	1	1	1	28	784		
5	1	1	1	1	1	1	0	0	1	0	1	1	1	0	0	1	0	1	1	1	1	1	1	0	0	1	1	1	1	1	1	0	0	0	0	20	400						
6	1	1	0	0	1	1	1	1	1	1	0	1	1	0	1	1	1	1	1	0	1	0	0	1	1	1	1	0	0	0	0	0	0	0	0	20	400						
7	0	0	0	0	0	0	1	1	0	1	0	1	0	0	1	1	0	1	0	0	1	1	1	0	0	0	0	0	1	1	1	0	0	0	0	13	169						
8	1	1	1	1	0	0	0	0	1	1	1	1	1	1	1	1	0	0	1	1	1	1	0	0	0	1	0	1	1	1	1	1	1	1	1	1	1	21	441				
9	1	1	1	1	1	1	0	0	0	0	0	1	1	1	1	1	1	1	1	1	1	1	0	1	1	1	1	1	1	1	1	1	1	1	1	1	1	25	625				
10	1	1	0	1	1	1	1	0	0	1	1	1	1	1	1	1	0	1	1	1	1	1	1	1	1	1	1	1	1	1	0	1	0	0	0	24	576						
11	1	1	1	1	1	1	0	0	0	1	0	1	0	1	1	1	1	1	1	1	1	0	0	0	1	1	0	1	1	1	1	1	0	0	0	20	400						
12	1	1	1	1	1	1	1	1	1	1	1	1	1	1	1	1	1	1	1	1	1	1	1	1	1	1	1	1	1	1	1	1	1	1	1	1	1	31	961				
13	1	1	0	0	1	1	1	1	0	1	1	1	1	0	1	1	1	1	1	1	1	1	0	0	1	1	1	1	1	1	1	1	0	0	0	23	529						
14	1	1	1	1	1	1	1	1	1	1	0	1	0	0	1	1	1	1	1	1	1	1	1	0	1	0	1	0	1	1	0	0	0	0	0	23	529						
15	1	0	1	0	1	0	1	0	1	1	1	1	1	1	0	0	1	0	1	0	1	0	1	0	1	1	1	0	1	0	1	0	0	0	0	19	361						
16	1	1	1	1	1	1	1	1	1	0	1	1	0	1	1	1	1	1	1	1	1	1	0	0	1	1	1	1	1	1	0	0	0	0	24	576							
17	1	1	1	1	1	1	1	1	1	0	1	1	1	1	1	1	1	1	1	1	1	0	1	1	1	1	1	1	1	1	1	1	0	0	0	27	729						
18	1	1	1	1	1	1	1	1	1	1	1	1	1	1	1	1	1	1	1	1	1	1	1	1	1	1	1	1	1	1	1	1	1	1	1	1	1	31	961				
19	1	0	1	0	1	0	1	0	0	1	1	1	1	1	1	1	1	1	1	1	1	1	0	0	0	0	1	1	1	0	0	0	0	0	0	19	361						
20	1	1	1	1	1	1	1	1	1	0	1	1	1	1	1	1	1	1	1	1	1	1	0	1	1	1	1	1	1	1	1	1	1	1	1	1	29	841					
21	1	1	0	0	1	1	1	1	0	1	1	1	0	0	1	1	1	0	1	1	1	1	0	1	1	1	1	1	1	1	1	0	0	0	0	21	441						
22	1	1	1	1	1	1	1	1	1	1	1	1	1	1	1	1	1	1	1	1	1	1	0	0	1	1	1	1	1	1	1	1	1	1	1	1	29	841					
23	1	1	1	1	1	1	1	1	1	0	0	1	1	0	1	1	0	1	0	0	0	0	0	0	0	0	0	0	0	1	1	1	1	1	1	1	19	361					
24	1	1	1	1	0	0	1	1	1	1	0	1	1	1	1	1	1	0	1	1	1	1	0	1	1	0	0	0	1	1	1	1	1	1	1	1	24	576					
25	1	1	1	1	1	1	1	1	1	1	1	1	1	1	0	1	1	1	1	1	1	1	0	1	1	1	1	1	1	1	1	1	1	1	1	1	29	841					
26	1	0	1	1	1	0	1	1	1	1	1	1	1	0	1	1	1	1	1	1	1	1	1	1	1	1	1	1	1	1	0	1	1	1	1	1	27	729					
27	1	1	1	1	1	1	1	1	1	1	1	1	1	0	1	1	1	1	1	1	1	1	0	1	0	0	1	1	1	1	1	1	1	1	1	1	27	729					
28	1	1	1	1	1	1	1	1	0	1	1	1	1	0	1	1	1	1	1	1	1	0	0	1	0	1	1	1	1	1	1	1	1	1	1	1	26	676					
29	1	1	1	1	1	1	1	1	1	1	1	1	1	1	1	1	1	1	1	1	1	1	1	1	1	1	1	1	1	1	1	1	1	1	1	1	31	961					
30	1	1	1	1	1	1	1	1	1	1	1	0	1	0	1	0	1	1	1	1	1	0	1	1	1	1	1	1	1	0	1	1	1	1	1	1	26	676					
Ci	29	26	25	23	26	22	26	23	22	24	21	29	23	18	30	26	25	27	26	24	24	16	16	21	21	24	24	30	25	24	17	17	733	18455									
C _i ²	841	676	625	529	676	484	676	529	484	576	441	841	529	324	900	676	625	729	676	576	576	256	256	441	576	576	900	625	576	289	289	17773											

Kuesioner Pendahuluan Pengujian 7

Responden	Atribut yang diuji																																									Ri	R _i ²
	1	2	3	4	5	6	7	8	9	10	13	15	16	17	18	19	21	22	26	27	28	33	34	35	36	37	39	40	41														
1	1	1	1	1	0	0	1	1	1	1	1	1	1	1	1	1	1	1	1	0	0	1	1	1	1	1	1	1	1	1	1	1	1	1	1	1	1	1	1	25	625		
2	1	1	1	1	1	1	1	1	1	1	0	1	1	0	1	1	0	1	1	1	1	0	0	1	1	1	1	1	0	0	22	484											
3	1	1	1	0	1	0	1	1	1	1	1	1	1	1	1	1	1	1	1	1	1	1	1	1	1	1	1	1	1	1	1	1	1	1	1	1	1	1	1	27	729		
4	1	1	1	1	1	1	1	1	1	1	0	1	1	1	1	0	1	1	1	1	1	1	0	1	1	1	1	1	1	1	1	1	1	1	1	1	1	1	1	1	26	676	
5	1	1	1	1	1	1	0	0	1	0	1	1	0	0	1	0	1	1	1	1	1	1	1	1	1	1	1	1	0	0	20	400											
6	1	1	0	0	1	1	1	1	1	1	0	1	1	0	1	1	1	1	1	0	1	1	1	1	1	1	1	1	0	0	20	400											
7	0	0	0	0	0	0	1	1	0	1	0	1	0	0	1	1	0	1	0	0	1	0	0	1	0	0	0	1	1	1	0	0	11	121									
8	1	1	1	1	0	0	0	0	1	1	1	1	1	1	1	1	0	0	1	1	1	0	1	0	1	0	1	1	1	1	1	1	1	1	1	1	1	1	1	21	441		
9	1	1	1	1	1	1	0	0	0	0	0	1	1	1	1	1	1	1	1	1	1	1	1	1	1	1	1	1	1	1	1	1	1	1	1	1	1	1	1	1	24	576	
10	1	1	0	1	1	1	1	0	0	1	1	1	1	1	1	1	1	1	0	1	1	1	1	1	1	1	1	1	0	1	0	0	22	484									
11	1	1	1	1	1	1	0	0	0	1	0	1	0	1	1	1	1	1	1	1	1	0	1	1	0	1	1	1	0	0	20	400											
12	1	1	1	1	1	1	1	1	1	1	1	1	1	1	1	1	1	1	1	1	1	1	1	1	1	1	1	1	1	1	1	1	1	1	1	1	1	1	1	1	29	841	
13	1	1	0	0	1	1	1	1	0	1	1	1	1	0	1	1	1	1	1	1	1	1	1	1	1	1	1	1	1	1	1	1	1	1	1	1	1	1	0	0	23	529	
14	1	1	1	1	1	1	1	1	1	1	0	1	0	0	1	1	1	1	1	1	1	1	0	1	0	1	1	0	0	0	21	441											
15	1	0	1	0	1	0	1	0	1	1	1	1	1	1	1	0	0	1	0	1	0	1	0	1	1	0	1	0	0	17	289												
16	1	1	1	1	1	1	1	1	1	0	1	1	0	1	1	1	1	1	1	1	1	1	1	1	1	1	1	1	1	1	1	1	1	1	1	0	0	0	24	576			
17	1	1	1	1	1	1	1	1	1	0	1	1	1	1	1	1	1	1	1	1	1	0	1	1	1	1	1	1	1	1	1	1	1	1	1	1	1	1	1	1	25	625	
18	1	1	1	1	1	1	1	1	1	1	1	1	1	1	1	1	1	1	1	1	1	1	1	1	1	1	1	1	1	1	1	1	1	1	1	1	1	1	1	1	29	841	
19	1	0	1	0	1	0	1	0	0	1	1	1	1	1	1	1	1	1	1	1	1	1	0	0	1	1	1	1	1	0	0	19	361										
20	1	1	1	1	1	1	1	1	1	0	1	1	1	1	1	1	1	1	1	1	1	1	1	1	1	1	1	1	1	1	1	1	1	1	1	1	1	1	1	1	28	784	
21	1	1	0	0	1	1	1	1	0	1	1	1	0	0	1	1	1	0	1	1	1	1	1	1	1	1	1	1	1	1	1	1	1	1	1	0	0	0	20	400			
22	1	1	1	1	1	1	1	1	1	1	1	1	1	1	1	1	1	1	1	1	1	1	1	1	1	1	1	1	1	1	1	1	1	1	1	1	1	1	1	1	1	29	841
23	1	1	1	1	1	1	1	1	1	0	0	1	1	0	1	1	0	1	0	0	0	0	0	0	0	0	0	0	0	0	19	361											
24	1	1	1	1	0	0	1	1	1	1	0	1	1	1	1	1	1	1	0	1	1	0	1	1	0	0	1	1	1	1	1	1	1	1	1	1	1	1	1	1	23	529	
25	1	1	1	1	1	1	1	1	1	1	1	1	1	0	1	1	1	1	1	1	1	1	1	1	1	1	1	1	1	1	1	1	1	1	1	1	1	1	1	1	1	28	784
26	1	0	1	1	1	0	1	1	1	1	1	1	0	1	1	1	1	1	1	1	1	1	1	1	1	1	1	1	0	1	1	1	1	1	1	1	1	1	1	1	1	25	625
27	1	1	1	1	1	1	1	1	1	1	1	1	1	0	1	1	1	1	1	1	1	1	1	1	1	1	1	0	0	1	1	1	1	1	1	1	1	1	1	1	1	26	676
28	1	1	1	1	1	1	1	1	0	1	1	1	1	0	1	1	1	1	1	1	1	0	0	1	1	1	1	1	1	1	1	1	1	1	1	1	1	1	1	1	1	25	625
29	1	1	1	1	1	1	1	1	1	1	1	1	1	1	1	1	1	1	1	1	1	1	1	1	1	1	1	1	1	1	1	1	1	1	1	1	1	1	1	1	1	29	841
30	1	1	1	1	1	1	1	1	1	1	1	0	1	0	1	0	1	1	1	1	1	0	1	1	1	1	1	1	1	1	1	1	1	1	1	1	1	1	1	1	1	24	576
C _i	29	26	25	23	26	22	26	23	22	24	21	29	23	18	30	26	25	27	26	24	24	21	24	24	30	25	24	17	17	701	16881												
C _i ²	841	676	625	529	676	484	676	529	484	576	441	841	529	324	900	676	625	729	676	576	576	441	576	576	900	625	576	289	289	17261													

Kuesioner Pendahuluan Pengujian 8

Responden	Atribut yang diuji																														Ri	Ri ²
	1	2	3	4	5	6	7	8	9	10	13	15	16	17	18	19	21	22	26	27	28	33	34	35	36	37	39					
1	1	1	1	1	0	0	1	1	1	1	1	1	1	1	1	1	1	1	1	0	0	1	1	1	1	1	1	1	23	529		
2	1	1	1	1	1	1	1	1	1	1	0	1	1	0	1	1	0	1	1	1	1	0	0	1	1	1	1	22	484			
3	1	1	1	0	1	0	1	1	1	1	1	1	1	1	1	1	1	1	1	1	1	1	1	1	1	1	1	25	625			
4	1	1	1	1	1	1	1	1	1	1	0	1	1	1	1	0	1	1	1	1	1	0	1	1	1	1	1	24	576			
5	1	1	1	1	1	1	0	0	1	0	1	1	0	0	1	0	1	1	1	1	1	1	1	1	1	1	0	20	400			
6	1	1	0	0	1	1	1	1	1	1	0	1	1	0	1	1	1	1	1	0	1	1	1	1	1	0	0	20	400			
7	0	0	0	0	0	0	1	1	0	1	0	1	0	0	1	1	0	1	0	0	1	0	0	0	1	1	1	11	121			
8	1	1	1	1	0	0	0	0	1	1	1	1	1	1	1	1	0	0	1	1	1	0	1	0	1	1	1	19	361			
9	1	1	1	1	1	1	0	0	0	0	0	1	1	1	1	1	1	1	1	1	1	1	1	1	1	1	1	22	484			
10	1	1	0	1	1	1	1	0	0	0	1	1	1	1	1	1	1	0	1	1	1	1	1	1	1	1	0	22	484			
11	1	1	1	1	1	1	1	0	0	0	1	0	1	0	1	1	1	1	1	1	0	1	1	0	1	1	1	20	400			
12	1	1	1	1	1	1	1	1	1	1	1	1	1	1	1	1	1	1	1	1	1	1	1	1	1	1	1	27	729			
13	1	1	0	0	1	1	1	1	0	1	1	1	1	0	1	1	1	1	1	1	1	1	1	1	1	1	1	23	529			
14	1	1	1	1	1	1	1	1	1	1	0	1	0	0	1	1	1	1	1	1	1	0	1	0	1	1	0	21	441			
15	1	0	1	0	1	0	1	0	1	1	1	1	1	1	0	0	1	0	1	0	1	0	1	0	1	0	1	17	289			
16	1	1	1	1	1	1	1	1	1	0	1	1	0	1	1	1	1	1	1	1	1	1	1	1	1	1	0	24	576			
17	1	1	1	1	1	1	1	1	1	0	1	1	1	1	1	1	1	1	1	1	0	1	1	1	1	1	1	25	625			
18	1	1	1	1	1	1	1	1	1	1	1	1	1	1	1	1	1	1	1	1	1	1	1	1	1	1	1	27	729			
19	1	0	1	0	1	0	1	0	0	1	1	1	1	1	1	1	1	1	1	1	1	0	0	1	1	1	0	19	361			
20	1	1	1	1	1	1	1	1	1	0	1	1	1	1	1	1	1	1	1	1	1	1	1	1	1	1	1	26	676			
21	1	1	0	0	1	1	1	1	0	1	1	1	0	0	1	1	1	0	1	1	1	1	1	1	1	1	0	20	400			
22	1	1	1	1	1	1	1	1	1	1	1	1	1	1	1	1	1	1	1	1	1	1	1	1	1	1	1	27	729			
23	1	1	1	1	1	1	1	1	1	0	0	1	1	0	1	1	0	1	0	0	0	0	0	0	0	1	1	17	289			
24	1	1	1	1	0	0	1	1	1	1	0	1	1	1	1	1	1	1	0	1	1	0	0	1	1	1	1	21	441			
25	1	1	1	1	1	1	1	1	1	1	1	1	1	0	1	1	1	1	1	1	1	1	1	1	1	1	1	26	676			
26	1	0	1	1	1	0	1	1	1	1	1	1	0	1	1	1	1	1	1	1	1	1	1	1	1	0	1	23	529			
27	1	1	1	1	1	1	1	1	1	1	1	1	1	0	1	1	1	1	1	1	1	0	0	1	1	1	1	24	576			
28	1	1	1	1	1	1	1	1	0	1	1	1	1	0	1	1	1	1	1	1	0	0	1	1	1	1	1	23	529			
29	1	1	1	1	1	1	1	1	1	1	1	1	1	1	1	1	1	1	1	1	1	1	1	1	1	1	1	27	729			
30	1	1	1	1	1	1	1	1	1	1	1	0	1	0	1	0	1	1	1	0	1	1	1	1	1	0	1	22	484			
Ci	29	26	25	23	26	22	26	23	22	24	21	29	23	18	30	26	25	27	26	24	24	21	24	24	30	25	24	667	15201			
C _i ²	841	676	625	529	676	484	676	529	484	576	441	841	529	324	900	676	625	729	676	576	576	441	576	576	900	625	576	16683				

Kuesioner Pendahuluan Pengujian 9

Responden	Atribut yang diuji																														Ri	Ri ²
	1	2	3	4	5	6	7	8	9	10	13	15	16	18	19	21	22	26	27	28	33	34	35	36	37	39						
1	1	1	1	1	0	0	1	1	1	1	1	1	1	1	1	1	1	1	0	0	1	1	1	1	1	1	1	22	484			
2	1	1	1	1	1	1	1	1	1	1	0	1	1	1	1	0	1	1	1	1	0	0	1	1	1	1	22	484				
3	1	1	1	0	1	0	1	1	1	1	1	1	1	1	1	1	1	1	1	1	1	1	1	1	1	1	24	576				
4	1	1	1	1	1	1	1	1	1	1	0	1	1	1	0	1	1	1	1	1	0	1	1	1	1	1	23	529				
5	1	1	1	1	1	1	0	0	1	0	1	0	1	0	1	1	1	1	1	1	1	1	1	1	1	0	20	400				
6	1	1	0	0	1	1	1	1	1	1	0	1	1	1	1	1	1	0	1	1	1	1	1	1	0	0	20	400				
7	0	0	0	0	0	0	1	1	0	1	0	1	0	1	0	1	0	0	1	0	0	0	1	1	1	1	11	121				
8	1	1	1	1	0	0	0	0	1	1	1	1	1	1	1	0	0	1	1	1	0	1	0	1	1	1	18	324				
9	1	1	1	1	1	1	0	0	0	0	0	1	1	1	1	1	1	1	1	1	1	1	1	1	1	1	21	441				
10	1	1	0	1	1	1	1	0	0	1	1	1	1	1	1	1	0	1	1	1	1	1	1	1	0	1	21	441				
11	1	1	1	1	1	1	0	0	0	1	0	1	0	1	1	1	1	1	1	0	1	1	0	1	1	1	19	361				
12	1	1	1	1	1	1	1	1	1	1	1	1	1	1	1	1	1	1	1	1	1	1	1	1	1	1	26	676				
13	1	1	0	0	1	1	1	1	0	1	1	1	1	1	1	1	1	1	1	1	1	1	1	1	1	1	23	529				
14	1	1	1	1	1	1	1	1	1	1	0	1	0	1	1	1	1	1	1	1	0	1	0	1	1	0	21	441				
15	1	0	1	0	1	0	1	0	1	1	1	1	1	1	0	0	1	0	1	0	1	1	0	1	0	1	16	256				
16	1	1	1	1	1	1	1	1	1	0	1	1	0	1	1	1	1	1	1	1	1	1	1	1	1	0	23	529				
17	1	1	1	1	1	1	1	1	1	0	1	1	1	1	1	1	1	1	0	1	1	1	1	1	1	1	24	576				
18	1	1	1	1	1	1	1	1	1	1	1	1	1	1	1	1	1	1	1	1	1	1	1	1	1	1	26	676				
19	1	0	1	0	1	0	1	0	0	1	1	1	1	1	1	1	1	1	1	1	0	0	1	1	1	0	18	324				
20	1	1	1	1	1	1	1	1	1	0	1	1	1	1	1	1	1	1	1	1	1	1	1	1	1	1	25	625				
21	1	1	0	0	1	1	1	1	0	1	1	1	0	1	1	1	0	1	1	1	1	1	1	1	1	0	20	400				
22	1	1	1	1	1	1	1	1	1	1	1	1	1	1	1	1	1	1	1	1	1	1	1	1	1	1	26	676				
23	1	1	1	1	1	1	1	1	1	0	0	1	1	1	1	0	1	0	0	0	0	0	0	0	1	1	17	289				
24	1	1	1	1	0	0	1	1	1	1	0	1	1	1	1	1	0	1	1	0	1	1	0	0	1	1	20	400				
25	1	1	1	1	1	1	1	1	1	1	1	1	1	1	1	1	1	1	1	1	1	1	1	1	1	1	26	676				
26	1	0	1	1	1	0	1	1	1	1	1	1	0	1	1	1	1	1	1	1	1	1	1	1	0	1	22	484				
27	1	1	1	1	1	1	1	1	1	1	1	1	1	1	1	1	1	1	1	1	0	0	1	1	1	1	24	576				
28	1	1	1	1	1	1	1	1	0	1	1	1	1	1	1	1	1	0	0	1	1	1	1	1	1	1	23	529				
29	1	1	1	1	1	1	1	1	1	1	1	1	1	1	1	1	1	1	1	1	1	1	1	1	1	1	26	676				
30	1	1	1	1	1	1	1	1	1	1	0	1	1	0	1	1	1	0	1	1	1	1	1	1	0	1	22	484				
Ci	29	26	25	23	26	22	26	23	22	24	21	29	23	30	26	25	27	26	24	24	21	24	24	30	25	24	649	14383				
Ci ²	841	676	625	529	676	484	676	529	484	576	441	841	529	900	676	625	729	676	576	576	441	576	576	900	625	576	16359					

Kuesioner Pendahuluan Pengujian 10

Responden	Atribut yang diuji																			Ri	R _i ²						
	1	2	3	4	5	6	7	8	9	10	15	16	18	19	21	22	26	27	28			34	35	36	37	39	
1	1	1	1	1	0	0	1	1	1	1	1	1	1	1	1	1	1	0	0	1	1	1	1	1	20	400	
2	1	1	1	1	1	1	1	1	1	1	1	1	1	1	0	1	1	1	1	1	0	1	1	1	22	484	
3	1	1	1	0	1	0	1	1	1	1	1	1	1	1	1	1	1	1	1	1	1	1	1	1	22	484	
4	1	1	1	1	1	1	1	1	1	1	1	1	1	0	1	1	1	1	1	1	1	1	1	1	23	529	
5	1	1	1	1	1	1	0	0	1	0	1	0	1	0	1	1	1	1	1	1	1	1	1	0	18	324	
6	1	1	0	0	1	1	1	1	1	1	1	1	1	1	1	1	0	1	1	1	1	1	0	0	19	361	
7	0	0	0	0	0	0	1	1	0	1	1	0	1	1	0	1	0	0	1	0	0	1	1	1	11	121	
8	1	1	1	1	0	0	0	0	1	1	1	1	1	1	0	0	1	1	1	1	1	0	1	1	17	289	
9	1	1	1	1	1	1	0	0	0	0	1	1	1	1	1	1	1	1	1	1	1	1	1	1	20	400	
10	1	1	0	1	1	1	1	0	0	1	1	1	1	1	1	0	1	1	1	1	1	1	0	1	19	361	
11	1	1	1	1	1	1	0	0	0	1	1	0	1	1	1	1	1	1	0	1	0	1	1	1	18	324	
12	1	1	1	1	1	1	1	1	1	1	1	1	1	1	1	1	1	1	1	1	1	1	1	1	24	576	
13	1	1	0	0	1	1	1	1	0	1	1	1	1	1	1	1	1	1	1	1	1	1	1	1	21	441	
14	1	1	1	1	1	1	1	1	1	1	1	0	1	1	1	1	1	1	1	1	0	1	1	0	21	441	
15	1	0	1	0	1	0	1	0	1	1	1	1	1	0	0	1	0	1	0	1	0	1	0	1	14	196	
16	1	1	1	1	1	1	1	1	1	0	1	0	1	1	1	1	1	1	1	1	1	1	1	0	21	441	
17	1	1	1	1	1	1	1	1	1	0	1	1	1	1	1	1	1	1	0	1	1	1	1	1	22	484	
18	1	1	1	1	1	1	1	1	1	1	1	1	1	1	1	1	1	1	1	1	1	1	1	1	24	576	
19	1	0	1	0	1	0	1	0	0	1	1	1	1	1	1	1	1	1	1	0	1	1	1	0	17	289	
20	1	1	1	1	1	1	1	1	1	0	1	1	1	1	1	1	1	1	1	1	1	1	1	1	23	529	
21	1	1	0	0	1	1	1	1	0	1	1	0	1	1	1	0	1	1	1	1	1	1	1	0	18	324	
22	1	1	1	1	1	1	1	1	1	1	1	1	1	1	1	1	1	1	1	1	1	1	1	1	24	576	
23	1	1	1	1	1	1	1	1	1	0	1	1	1	1	0	1	0	0	0	0	0	0	1	1	17	289	
24	1	1	1	1	0	0	1	1	1	1	1	1	1	1	1	1	0	1	1	0	1	1	1	1	20	400	
25	1	1	1	1	1	1	1	1	1	1	1	1	1	1	1	1	1	1	1	1	1	1	1	1	24	576	
26	1	0	1	1	1	0	1	1	1	1	1	0	1	1	1	1	1	1	1	1	1	1	0	1	20	400	
27	1	1	1	1	1	1	1	1	1	1	1	1	1	1	1	1	1	1	1	0	1	1	1	1	23	529	
28	1	1	1	1	1	1	1	1	0	1	1	1	1	1	1	1	0	0	1	1	1	1	1	1	21	441	
29	1	1	1	1	1	1	1	1	1	1	1	1	1	1	1	1	1	1	1	1	1	1	1	1	24	576	
30	1	1	1	1	1	1	1	1	1	1	0	1	1	0	1	1	1	0	1	1	1	1	0	1	20	400	
C _i	29	26	25	23	26	22	26	23	22	24	29	23	30	26	25	27	26	24	24	24	24	24	30	25	24	607	12561
C _i ²	841	676	625	529	676	484	676	529	484	576	841	529	900	676	625	729	676	576	576	576	576	900	625	576	15477		

LAMPIRAN B

- **Uji Validitas dan Reliabilitas**

UJI VALIDITAS DAN RELIABILITAS

Tingkat Kepentingan

***** Method 1 (space saver) will be used for this analysis *****

—

R E L I A B I L I T Y A N A L Y S I S - S C A L E (A L P H A)

Statistics for	Mean	Variance	Std Dev	N of Variables
SCALE	81.1000	60.7147	7.7920	24

Item-total Statistics

	Scale Mean if Item Deleted	Scale Variance if Item Deleted	Corrected Item- Total Correlation	Alpha if Item Deleted
ATRIBUT1	77.4636	57.0033	.4766	.8726
ATRIBUT2	77.6545	55.9346	.5246	.8709
ATRIBUT3	77.6636	55.8033	.5091	.8712
ATRIBUT4	77.8000	55.6844	.4939	.8715
ATRIBUT5	77.8000	55.8312	.3711	.8758
ATRIBUT6	77.7636	56.4390	.3725	.8751
ATRIBUT7	77.4818	55.6281	.5934	.8694
ATRIBUT8	77.7273	55.6497	.4687	.8722
ATRIBUT9	77.6182	56.0914	.4593	.8725
ATRIBU10	77.6545	55.4942	.4885	.8716
ATRIBU11	77.6455	56.5429	.4099	.8739
ATRIBU12	77.6636	56.6473	.3882	.8745
ATRIBU13	77.7000	56.0468	.4131	.8739
ATRIBU14	77.6818	56.2740	.4192	.8736
ATRIBU15	77.7091	56.1348	.4628	.8724
ATRIBU16	77.7182	55.6354	.4935	.8715
ATRIBU17	77.7727	56.2139	.4536	.8727
ATRIBU18	77.9182	54.3143	.5438	.8698
ATRIBU19	78.2364	55.9253	.3862	.8750
ATRIBU20	78.1182	57.0960	.2801	.8783
ATRIBU21	77.6727	53.6901	.6698	.8661
ATRIBU22	77.6273	56.3644	.4555	.8727
ATRIBU23	77.6455	57.1667	.3881	.8744
ATRIBU24	77.5636	57.7711	.3536	.8752

Reliability Coefficients

N of Cases = 110.0

Alpha = .8775

N of Items = 24

Tingkat Kepuasan

***** Method 1 (space saver) will be used for this analysis *****

—

RELIABILITY ANALYSIS - SCALE (ALPHA)

Statistics for	Mean	Variance	Std Dev	N of Variables
SCALE	64.4273	83.8616	9.1576	24

Item-total Statistics

	Scale Mean if Item Deleted	Scale Variance if Item Deleted	Corrected Item-Total Correlation	Alpha if Item Deleted
ATRIBUT1	62.4727	76.6736	.4276	.8428
ATRIBUT2	62.4364	77.6794	.3637	.8452
ATRIBUT3	62.4455	77.6805	.4143	.8434
ATRIBUT4	62.5636	79.0555	.3194	.8465
ATRIBUT5	61.6636	78.0601	.3932	.8441
ATRIBUT6	61.7182	74.1125	.6672	.8343
ATRIBUT7	61.6636	76.3354	.4474	.8421
ATRIBUT8	61.5545	77.0016	.4338	.8426
ATRIBUT9	62.1727	76.9332	.3262	.8478
ATRIBU10	61.5182	76.6740	.4332	.8426
ATRIBU11	61.6273	75.3736	.5228	.8392
ATRIBU12	62.4364	77.3491	.3928	.8441
ATRIBU13	61.5000	77.8670	.4021	.8438
ATRIBU14	61.6455	76.7447	.4830	.8410
ATRIBU15	61.4364	78.7987	.2689	.8490
ATRIBU16	61.4000	79.7651	.3213	.8464
ATRIBU17	61.4909	78.7660	.3234	.8465
ATRIBU18	61.4545	78.1218	.3569	.8454
ATRIBU19	61.2545	78.1364	.3878	.8443
ATRIBU20	61.4455	78.3043	.3597	.8452
ATRIBU21	61.3182	79.4483	.3605	.8453
ATRIBU22	61.8273	75.8139	.4211	.8433
ATRIBU23	61.6545	75.1273	.5259	.8390
ATRIBU24	61.1273	80.7359	.3211	.8466

Reliability Coefficients

N of Cases = 110.0

Alpha = .8493

N of Items = 24

LAMPIRAN C

- Hasil Kuesioner Penelitian Untuk Tingkat Kepentingan
- Hasil Kuesioner Penelitian Untuk Tingkat Kepuasan

Hasil Kuesioner Penelitian Untuk Tingkat Kepentingan																								
Responden	Atribut																							
	1	2	3	4	5	6	7	8	9	10	11	12	13	14	15	16	17	18	19	20	21	22	23	24
1	4	4	4	4	4	4	3	3	3	4	4	4	4	3	4	3	4	4	4	4	4	3	4	4
2	4	4	4	4	3	3	4	4	4	4	4	4	3	4	4	3	3	3	3	3	4	4	4	4
3	4	4	4	4	2	2	4	4	4	4	4	4	3	3	4	3	3	3	3	3	4	4	4	4
4	3	3	2	2	3	3	4	4	4	3	3	4	3	3	3	2	3	3	2	3	3	3	3	3
5	4	4	4	4	2	4	4	4	4	3	3	3	2	2	3	2	3	3	3	2	3	3	3	4
6	4	4	4	4	4	3	4	4	4	4	3	4	3	4	3	4	4	3	4	4	4	4	3	4
7	4	4	3	3	3	3	3	3	3	3	3	2	2	3	3	3	3	2	2	3	3	3	3	3
8	4	4	4	4	3	4	4	4	4	4	4	4	4	4	3	3	3	3	3	3	4	4	3	4
9	4	4	4	4	3	3	4	4	4	4	4	3	4	4	4	4	3	3	2	4	3	4	3	4
10	3	4	3	4	4	4	4	4	4	4	4	3	4	3	4	4	3	4	2	4	4	3	4	4
11	4	4	4	4	4	2	4	3	4	4	4	4	3	3	4	4	4	4	2	3	4	4	4	4
12	3	3	3	3	3	3	4	4	3	4	3	3	3	2	4	2	3	4	2	3	4	3	4	3
13	4	3	3	4	4	3	4	4	4	4	4	3	4	4	4	4	4	3	3	3	4	4	4	3
14	3	3	3	3	4	3	4	3	4	4	4	4	4	4	4	4	3	3	3	3	4	4	4	4
15	3	4	4	3	4	4	4	3	4	4	4	3	3	4	4	4	4	3	3	3	4	4	4	4
16	4	3	3	4	4	4	4	4	4	4	4	3	3	4	4	4	4	4	4	4	4	3	4	4
17	4	2	4	2	4	4	4	3	4	4	4	4	4	4	4	4	3	3	4	3	3	4	4	4
18	4	4	4	4	4	4	4	4	4	3	4	3	4	3	3	4	4	3	4	3	4	4	4	4
19	4	4	4	4	4	4	4	4	4	4	3	3	4	4	3	4	4	3	4	3	4	4	4	4
20	4	4	4	4	4	4	4	4	3	4	3	4	4	3	4	4	4	4	4	4	3	4	4	4
21	3	3	3	3	4	4	4	3	4	3	4	3	4	3	3	4	4	2	2	2	2	2	3	4
22	4	4	4	4	3	4	4	3	4	4	4	4	4	3	4	4	3	3	2	2	4	4	4	3
23	4	3	4	3	3	3	3	3	3	3	3	4	4	3	4	2	3	2	3	3	4	3	4	4
24	4	4	4	4	2	4	4	4	3	4	4	4	4	4	3	4	3	4	3	2	4	4	4	4
25	3	3	3	3	2	4	3	3	3	3	3	2	4	3	4	3	3	3	2	2	2	3	4	4
26	4	3	4	3	2	4	4	2	4	3	3	4	3	3	3	3	3	4	3	2	3	3	4	3
27	4	3	4	3	4	3	4	2	4	3	2	2	4	4	4	3	3	4	3	2	4	2	3	3
28	4	4	4	4	4	3	4	3	4	3	4	4	4	4	4	4	4	4	4	4	4	3	3	4
29	3	3	3	3	4	4	3	2	3	3	4	4	3	3	3	3	3	3	4	3	4	3	3	4
30	4	3	4	3	4	4	3	3	3	4	4	2	2	2	3	2	3	2	4	2	4	4	3	4
31	4	3	3	4	4	4	4	2	4	2	4	3	3	3	3	3	3	2	3	2	2	3	3	4
32	4	4	3	3	4	4	4	4	4	3	4	4	4	4	4	4	4	3	4	3	4	3	4	3
33	3	3	3	3	4	3	4	3	4	3	4	3	2	3	3	3	2	3	3	3	3	3	3	3
34	4	4	3	3	4	4	4	4	4	4	4	4	3	3	3	4	4	3	3	3	4	4	4	4
35	4	4	3	3	4	4	4	4	4	4	4	4	4	4	4	4	4	4	2	2	4	4	4	4
36	4	4	3	3	4	4	4	4	4	4	3	4	2	3	4	3	3	2	2	2	4	3	3	3
37	3	3	3	3	4	4	4	4	4	3	3	2	2	2	4	4	4	2	2	3	3	4	4	3
38	3	3	3	3	4	4	3	3	3	4	3	4	2	3	3	4	4	3	3	3	4	4	4	3

Hasil Kuesioner Penelitian Untuk Tingkat Kepentingan																								
Responden	Atribut																							
	1	2	3	4	5	6	7	8	9	10	11	12	13	14	15	16	17	18	19	20	21	22	23	24
39	3	3	3	3	4	4	3	2	3	3	4	3	3	3	2	2	3	2	2	3	3	3	3	3
40	3	4	4	3	4	4	4	3	4	4	4	3	3	3	4	4	4	4	3	4	4	3	4	4
41	3	4	4	3	4	4	4	4	4	4	4	4	3	3	3	4	4	4	2	4	4	4	4	4
42	4	4	4	4	4	4	4	3	3	4	3	4	4	3	4	4	4	4	3	4	4	4	3	3
43	4	4	3	3	3	4	4	3	4	4	3	4	4	4	4	4	4	4	2	4	3	3	3	3
44	4	4	4	4	4	4	4	4	4	4	4	4	4	4	4	4	4	3	2	2	4	4	3	4
45	3	3	2	2	3	4	3	3	2	4	3	4	4	4	3	3	3	4	2	2	2	3	3	3
46	3	3	2	2	3	4	3	3	3	4	2	2	4	3	3	4	4	4	2	2	2	3	3	3
47	3	3	3	3	3	4	3	3	3	3	2	3	2	2	3	3	3	3	3	3	3	3	3	3
48	4	3	4	3	4	3	4	4	4	4	2	4	2	3	4	3	4	2	3	2	4	3	3	4
49	3	3	3	3	2	2	3	3	3	2	3	3	3	2	3	2	3	2	2	2	3	3	3	3
50	4	3	4	3	2	3	4	3	4	3	3	4	3	3	3	3	3	2	2	3	2	3	3	3
51	3	3	3	3	3	2	2	2	3	2	4	3	2	3	3	4	4	3	3	4	3	4	3	3
52	3	3	3	3	2	3	4	4	4	2	4	4	3	3	4	3	3	3	3	3	3	3	3	3
53	3	3	3	3	2	2	3	3	3	4	3	3	4	4	4	4	4	2	2	3	2	3	3	3
54	3	3	3	3	2	2	3	3	3	4	3	3	4	4	4	4	4	2	2	3	2	3	3	3
55	4	4	3	3	4	4	4	4	3	4	4	4	4	3	4	4	4	3	4	3	4	4	4	3
56	3	3	3	3	3	3	4	4	3	3	3	3	4	4	3	3	3	3	3	2	3	4	4	4
57	3	3	3	3	2	2	3	3	2	4	2	3	3	3	3	3	3	3	3	2	2	4	4	3
58	4	2	4	2	4	3	4	4	4	4	4	4	4	4	4	3	4	3	4	3	4	4	4	4
59	4	3	4	3	4	4	4	4	4	4	3	4	4	4	4	3	4	4	4	3	4	3	4	3
60	4	4	4	4	3	3	4	4	4	3	2	2	4	4	3	3	3	4	3	2	3	4	2	3
61	4	3	4	3	4	3	4	3	4	4	4	3	4	4	4	3	4	4	3	2	4	4	4	4
62	4	4	4	4	3	3	3	3	4	4	4	3	4	4	3	3	4	4	4	4	4	4	4	3
63	4	3	3	4	2	2	3	3	3	3	3	3	3	3	3	3	3	3	2	3	3	4	4	3
64	4	3	4	3	3	3	3	3	3	4	3	3	4	4	3	3	2	3	2	3	3	4	4	3
65	3	3	3	3	2	2	2	2	2	3	2	3	3	3	3	3	3	3	2	3	3	4	4	3
66	4	4	3	3	3	3	4	4	4	4	4	4	4	3	4	4	3	4	3	3	3	4	4	4
67	4	3	4	3	4	3	4	4	4	3	4	4	3	3	3	3	3	3	3	3	3	3	3	3
68	3	3	3	3	3	3	4	4	4	4	4	3	4	3	4	4	3	4	4	4	4	4	3	4
69	4	4	4	4	4	3	4	4	4	4	4	4	4	4	3	3	3	4	2	3	4	4	4	3
70	4	4	4	4	3	3	4	4	4	3	4	4	3	4	4	4	3	4	2	3	4	4	4	4
71	4	3	4	3	4	3	3	4	4	3	4	4	3	4	4	4	4	4	3	2	4	4	4	4
72	4	3	4	3	3	3	3	3	3	4	4	4	4	4	3	2	2	2	2	2	3	3	4	3
73	3	3	3	3	4	4	3	3	3	2	3	2	3	4	3	2	3	3	3	3	3	2	3	4
74	3	3	3	3	3	3	4	4	4	3	3	4	4	4	3	3	2	3	2	3	3	3	3	4
75	4	3	3	4	4	3	4	4	4	2	3	3	3	4	3	3	3	3	3	4	4	2	3	4
76	4	3	3	4	2	2	4	4	4	2	3	3	3	3	2	3	3	3	3	3	3	3	3	4

Hasil Kuesioner Penelitian Untuk Tingkat Kepentingan																								
Responden	Atribut																							
	1	2	3	4	5	6	7	8	9	10	11	12	13	14	15	16	17	18	19	20	21	22	23	24
77	4	3	4	3	4	3	3	3	3	2	3	3	2	2	2	4	2	4	3	3	3	3	3	3
78	3	3	3	3	3	3	3	3	3	2	3	3	3	2	2	3	3	3	3	3	3	3	3	3
79	3	3	3	3	4	3	4	4	3	3	3	4	2	3	3	3	2	3	2	2	3	3	3	3
80	4	4	3	3	3	3	2	2	2	3	3	3	4	4	3	3	3	2	3	2	2	3	3	3
81	3	3	3	3	3	3	3	3	3	3	4	4	3	4	3	3	3	3	3	4	3	2	2	3
82	3	3	3	3	2	2	3	3	3	3	3	3	3	3	3	3	3	3	3	3	3	4	4	3
83	4	4	4	4	4	4	4	4	4	4	3	3	4	4	3	4	3	3	3	3	4	4	4	3
84	3	3	2	2	4	3	3	2	3	3	3	3	3	3	2	3	3	2	2	3	3	3	3	4
85	3	3	2	2	2	2	3	3	3	4	3	3	3	3	4	4	3	2	2	3	3	3	3	4
86	4	4	4	4	3	3	4	4	4	4	3	3	4	4	4	3	3	3	4	3	3	4	3	4
87	4	4	3	3	3	4	4	4	4	3	4	4	4	4	3	4	4	4	4	4	3	4	3	4
88	4	4	4	4	4	4	4	3	4	3	4	4	4	4	3	4	4	4	4	4	4	4	3	4
89	4	4	4	4	4	4	3	3	3	3	4	4	4	4	4	3	4	4	4	4	4	4	4	4
90	3	3	3	3	3	3	3	3	4	3	4	4	3	4	3	3	3	3	3	4	4	3	3	4
91	4	4	4	4	2	4	4	4	3	3	4	4	4	4	3	4	4	3	3	4	4	3	3	3
92	3	3	3	3	3	4	3	3	3	3	4	3	3	4	3	3	2	3	2	4	3	3	3	4
93	4	4	4	4	3	4	4	4	3	4	3	4	4	4	4	3	4	4	3	3	4	4	3	4
94	4	4	4	4	4	3	4	4	3	3	4	3	3	2	2	3	2	2	2	2	3	3	3	4
95	4	4	4	4	2	3	4	4	4	4	4	3	3	4	4	3	4	4	2	2	4	4	4	4
96	4	4	4	4	3	4	4	4	3	4	4	3	4	4	3	4	4	4	2	2	4	4	4	4
97	4	4	4	4	2	4	4	3	3	4	4	4	4	4	3	3	3	4	4	3	4	4	4	3
98	4	2	4	2	2	2	3	2	2	2	4	4	4	4	3	3	3	2	4	3	4	4	4	4
99	3	3	3	3	3	3	3	2	2	3	3	3	3	3	3	3	3	2	2	3	3	3	3	3
100	4	4	4	4	4	3	3	3	3	4	4	4	4	4	3	4	4	4	3	3	3	4	4	3
101	4	4	4	4	4	3	4	4	3	4	3	4	3	4	4	4	4	4	3	3	4	3	4	4
102	4	4	2	2	3	3	3	3	3	3	4	4	3	3	3	3	3	3	3	2	2	3	2	4
103	4	4	4	4	4	3	4	3	3	4	3	4	3	3	4	4	4	4	3	4	4	4	4	4
104	4	4	3	3	4	4	4	4	3	4	4	4	4	4	4	4	3	4	3	4	4	4	4	4
105	3	4	3	4	4	4	4	4	4	3	4	4	3	4	4	4	3	4	4	4	4	4	3	3
106	3	3	3	3	4	4	4	4	4	3	4	3	4	4	4	4	4	3	3	4	4	4	3	3
107	4	4	4	4	3	4	4	3	4	4	3	4	4	4	3	4	3	4	3	2	4	3	4	4
108	4	4	3	3	3	3	3	3	4	4	3	3	3	3	2	3	3	2	2	2	3	3	3	3
109	4	4	4	4	4	4	4	4	4	4	3	3	4	4	4	4	3	4	3	4	4	4	3	3
110	3	2	3	2	2	3	3	3	2	3	3	3	3	3	4	4	4	3	3	4	3	4	3	3

Hasil Kuesioner Penelitian Untuk Tingkat Kepuasan																								
Responden	Atribut																							
	1	2	3	4	5	6	7	8	9	10	11	12	13	14	15	16	17	18	19	20	21	22	23	24
1	2	2	2	2	2	2	3	3	4	4	4	3	3	3	3	3	4	3	4	4	4	1	2	3
2	3	3	2	2	3	3	3	3	3	3	3	3	3	3	3	3	4	3	4	3	2	2	2	4
3	3	3	2	2	2	2	3	3	3	3	2	1	3	2	2	1	4	4	3	3	1	2	3	
4	2	1	2	1	2	2	2	3	4	4	4	3	2	2	4	2	2	3	3	2	2	2	1	3
5	2	1	2	2	2	2	2	3	2	3	3	2	2	3	3	3	3	3	3	3	1	2	4	
6	2	2	1	1	3	3	3	4	4	3	2	2	4	3	4	3	4	4	4	2	3	1	1	4
7	1	1	2	2	2	2	2	2	3	3	3	2	3	3	3	3	3	1	3	3	3	2	2	3
8	4	4	3	2	3	3	4	1	4	3	3	2	3	3	4	3	3	4	4	3	3	3	4	3
9	1	2	2	2	1	2	2	2	3	2	3	1	3	2	4	3	3	2	3	3	3	1	2	3
10	4	4	3	4	3	3	4	4	3	4	2	2	3	3	3	2	3	3	2	3	4	2	3	4
11	2	2	2	1	3	4	3	4	4	3	3	2	3	4	4	4	3	4	4	4	3	3	3	3
12	4	4	3	3	3	4	1	3	4	4	3	2	3	4	3	3	4	4	3	3	4	3	3	4
13	2	2	3	4	2	2	4	4	4	3	3	2	3	4	4	4	3	3	4	2	3	3	4	3
14	1	2	1	1	1	2	3	2	2	3	2	2	2	2	2	3	3	3	3	3	3	4	3	3
15	4	3	3	3	2	3	4	3	4	4	4	3	4	3	4	3	4	3	4	3	3	3	3	3
16	1	1	2	2	4	4	4	3	3	3	3	2	3	3	3	4	3	4	2	4	3	4	4	4
17	2	2	1	1	4	4	3	3	3	3	4	3	4	4	4	3	3	3	4	3	4	3	4	3
18	1	2	2	1	4	3	3	3	4	4	3	2	2	3	4	3	3	4	3	4	2	3	3	4
19	2	1	3	3	3	3	2	4	3	3	2	1	3	3	3	3	3	4	4	4	3	4	3	3
20	1	1	2	2	2	3	3	3	2	2	3	2	2	3	4	3	2	3	3	3	3	4	4	3
21	2	2	2	1	4	3	4	3	4	4	2	1	4	4	3	3	3	3	3	3	3	3	4	3
22	1	2	2	2	3	4	3	4	3	4	3	2	3	4	3	4	2	3	3	4	3	3	4	4
23	2	2	1	2	3	3	3	2	4	4	3	4	3	3	4	3	4	4	2	2	3	3	4	4
24	4	4	2	2	4	3	4	3	3	3	4	3	4	4	4	3	3	4	4	2	2	4	4	4
25	2	2	3	3	3	4	3	3	3	2	3	2	2	2	3	4	4	4	3	3	4	3	3	4
26	1	1	2	1	3	4	4	3	2	2	4	2	3	3	3	2	4	4	4	3	3	4	4	3
27	2	2	2	2	3	2	2	2	4	4	4	2	3	3	3	3	3	3	3	2	4	3	3	3
28	4	4	4	3	3	3	4	4	3	4	3	1	4	3	4	3	4	3	4	4	3	4	3	4
29	2	2	1	1	4	3	3	3	4	3	3	2	3	3	3	3	3	2	4	3	3	3	4	3
30	2	1	2	1	3	4	3	4	3	3	3	4	4	3	4	3	3	3	3	2	3	4	4	3
31	3	4	4	3	3	3	3	3	3	3	2	1	3	3	3	3	4	3	4	4	3	3	2	4
32	2	1	1	2	3	3	4	3	1	3	1	1	2	2	4	2	3	3	3	3	3	2	1	3
33	2	2	1	1	3	4	3	4	1	3	4	3	4	3	3	4	3	3	4	4	4	3	3	4
34	2	1	2	1	3	3	3	4	3	2	3	2	3	2	4	3	3	3	3	3	4	2	2	3
35	2	2	2	2	3	4	4	4	3	3	3	2	4	3	3	4	3	3	3	3	3	3	4	4
36	3	3	2	2	2	3	3	3	2	4	4	3	4	3	4	4	4	4	4	4	4	3	3	3
37	2	2	2	2	2	2	2	3	1	2	1	1	3	3	1	2	3	3	2	3	3	4	3	3
38	2	1	2	1	3	3	3	3	3	4	3	3	3	3	2	4	4	4	3	3	3	3	4	4

Hasil Kuesioner Penelitian Untuk Tingkat Kepuasan																								
Responden	Atribut																							
	1	2	3	4	5	6	7	8	9	10	11	12	13	14	15	16	17	18	19	20	21	22	23	24
39	2	2	1	1	2	3	2	3	2	3	4	3	3	3	4	3	3	3	3	4	4	2	2	3
40	1	2	3	3	3	3	4	4	1	4	3	3	3	3	4	3	4	3	3	3	3	3	3	4
41	4	3	2	2	2	3	3	3	1	1	2	1	3	3	2	3	3	3	3	3	3	3	3	3
42	3	3	3	3	2	2	3	3	2	3	3	2	2	2	3	3	3	3	3	3	3	2	2	3
43	3	2	1	2	3	3	3	3	2	4	4	4	3	3	4	3	2	4	2	4	4	3	4	3
44	1	1	1	1	3	3	4	4	1	3	4	3	3	3	3	3	3	3	4	4	3	4	3	3
45	4	3	2	2	2	3	3	4	2	3	4	4	4	4	4	3	4	3	4	3	4	4	4	4
46	2	2	2	2	1	2	3	4	2	3	2	1	3	3	1	3	2	2	3	3	3	3	3	3
47	2	1	1	2	2	2	3	3	2	2	1	2	1	2	3	3	3	2	4	3	3	2	1	2
48	1	1	2	2	3	2	2	3	1	3	3	1	4	4	3	2	2	3	3	3	3	1	3	3
49	1	2	1	2	2	2	2	3	1	3	3	1	2	3	3	3	1	4	2	4	2	2	2	3
50	2	2	2	2	2	3	3	4	1	4	3	2	1	1	4	3	3	3	4	3	4	3	3	3
51	2	1	2	1	2	2	3	3	1	2	3	2	2	3	3	3	2	1	3	3	3	2	2	3
52	1	1	2	1	3	2	1	3	3	3	4	3	4	2	4	3	3	3	4	4	2	1	3	3
53	2	2	2	2	3	3	2	2	1	2	3	3	3	1	3	3	3	2	3	3	3	1	2	3
54	2	2	2	2	3	3	3	3	1	2	3	2	3	3	4	3	1	2	3	2	3	3	3	3
55	2	1	1	2	3	3	3	4	3	3	4	3	4	3	2	3	4	3	4	4	4	2	2	4
56	1	1	2	2	4	3	4	3	3	4	3	2	2	2	4	4	4	2	4	3	3	1	2	3
57	1	2	1	2	3	3	4	2	2	3	4	2	4	3	4	3	3	4	4	4	4	4	3	3
58	3	3	2	2	3	4	4	3	2	4	3	1	3	2	3	4	4	4	4	3	4	4	4	3
59	2	2	3	2	4	4	3	1	1	3	3	2	3	3	3	4	4	2	4	3	4	4	4	4
60	1	2	2	1	2	2	1	2	2	3	2	1	2	2	2	3	3	4	3	1	4	2	2	3
61	1	1	1	1	2	2	2	2	3	2	3	2	2	2	4	4	2	2	3	2	2	3	3	3
62	2	2	2	2	3	3	3	2	2	3	3	2	3	3	3	3	3	3	4	3	4	4	3	4
63	2	2	4	2	3	4	3	3	1	2	2	1	4	4	4	4	3	4	3	3	3	3	3	3
64	1	1	1	1	2	2	1	1	1	3	2	2	3	3	3	2	3	3	3	2	3	3	3	3
65	2	1	1	2	2	2	2	1	3	3	2	1	3	1	4	3	3	2	4	2	3	1	2	4
66	2	2	1	2	4	3	3	2	2	4	2	1	4	3	4	3	4	3	3	4	3	2	2	3
67	1	1	1	1	2	1	3	2	1	3	1	1	3	3	3	3	2	2	2	3	3	2	2	3
68	2	2	2	2	3	2	3	2	1	3	2	1	2	1	4	3	1	2	4	4	2	3	3	4
69	2	1	2	2	3	1	2	2	2	2	1	2	4	4	3	3	3	1	4	3	3	1	1	3
70	2	2	4	2	4	2	3	4	3	3	2	1	3	3	2	4	2	3	4	4	3	3	4	4
71	1	2	2	1	2	3	1	3	1	2	1	2	2	3	4	2	2	3	2	2	3	3	3	3
72	1	1	1	1	1	1	2	2	2	2	3	2	3	3	3	4	1	3	4	3	3	2	2	3
73	2	2	2	1	3	2	3	3	2	3	2	2	3	3	3	3	1	3	3	2	4	1	1	4
74	3	2	2	2	1	2	3	1	2	2	2	1	3	3	3	2	3	2	3	3	3	3	3	3
75	1	2	2	2	3	3	2	2	1	4	3	2	3	2	2	4	3	4	3	3	3	2	2	3
76	2	3	1	2	3	1	3	2	1	3	1	1	3	1	2	3	3	3	1	1	1	1	1	3

Hasil Kuesioner Penelitian Untuk Tingkat Kepuasan																								
Responden	Atribut																							
	1	2	3	4	5	6	7	8	9	10	11	12	13	14	15	16	17	18	19	20	21	22	23	24
77	3	3	2	2	3	1	3	3	3	1	2	1	3	2	3	3	3	2	1	2	1	2	3	
78	2	2	1	1	3	2	2	2	2	2	3	2	3	2	2	2	2	3	2	3	2	2	2	3
79	2	2	2	2	3	2	2	2	1	2	2	1	3	1	3	3	3	3	2	2	2	2	3	4
80	1	1	2	2	3	1	3	3	3	1	1	1	3	1	3	2	3	3	3	3	1	1	4	
81	3	2	3	2	3	3	4	3	3	3	4	3	3	3	4	4	2	3	4	4	3	2	2	3
82	1	2	2	2	3	3	1	2	2	3	2	1	3	2	2	3	3	4	2	2	2	3	3	3
83	1	1	1	1	1	1	2	2	1	2	2	2	2	1	1	3	3	3	2	2	3	1	2	3
84	1	2	2	1	2	2	2	1	1	3	2	1	2	2	2	3	2	3	2	2	3	2	2	3
85	1	3	1	2	3	3	1	3	3	1	3	1	3	3	2	3	4	3	1	1	3	3	2	2
86	2	2	2	1	3	3	3	3	2	2	3	2	3	2	3	3	3	3	2	2	4	2	2	3
87	2	2	2	1	4	3	2	3	1	2	3	2	3	3	3	3	4	4	4	4	3	2	3	3
88	1	1	3	3	3	4	1	4	1	4	3	3	4	3	4	3	3	4	3	3	4	4	3	4
89	2	2	2	2	3	2	2	3	1	1	2	1	2	3	2	2	2	3	4	4	4	3	4	3
90	2	2	1	2	4	3	4	3	3	2	3	1	3	3	3	4	2	3	3	3	3	3	3	3
91	1	1	2	2	2	2	2	2	1	2	3	2	3	2	2	3	3	2	3	3	2	4	3	4
92	2	3	2	3	2	2	2	3	3	4	3	2	4	3	2	4	3	2	2	4	3	3	4	3
93	3	3	3	3	3	3	3	2	1	1	3	2	3	3	1	3	3	1	4	3	3	3	3	3
94	1	2	2	1	3	2	2	3	1	4	2	1	2	3	2	2	3	1	3	3	3	2	2	4
95	2	3	2	1	3	3	3	3	3	3	4	3	3	3	2	4	4	2	4	3	3	3	3	3
96	1	3	2	2	3	3	3	2	2	3	3	3	1	3	1	3	2	2	4	3	3	2	3	3
97	2	2	2	2	3	3	3	3	1	1	3	2	2	2	1	2	3	3	3	3	3	2	2	3
98	2	2	2	1	3	3	3	4	1	3	4	4	3	4	2	3	4	3	4	3	3	3	3	4
99	1	1	1	1	4	3	1	4	2	4	4	3	4	3	3	4	3	3	3	2	3	2	2	4
100	3	4	3	3	3	3	4	3	3	4	3	1	3	3	1	2	4	2	4	4	4	4	4	3
101	2	3	3	2	3	3	2	4	2	3	3	3	4	4	2	4	3	2	3	3	3	4	3	3
102	1	1	2	2	3	3	2	2	1	3	3	2	3	3	3	3	3	2	3	3	3	3	3	3
103	3	3	4	4	4	4	3	4	2	4	4	3	3	4	2	3	2	4	4	3	4	3	4	4
104	2	2	2	1	3	3	2	2	2	3	1	1	3	3	2	3	2	2	2	2	3	4	3	3
105	3	3	3	4	3	3	4	4	1	4	4	3	2	2	4	3	3	4	3	3	4	3	3	3
106	1	1	1	2	3	3	3	3	3	3	3	2	3	3	3	2	4	3	3	3	4	1	2	4
107	2	2	2	2	2	2	2	3	3	4	2	1	3	3	2	2	3	3	3	2	3	3	3	3
108	1	1	2	2	3	4	4	3	4	3	3	2	3	4	4	3	3	3	3	2	4	3	4	4
109	2	2	2	1	4	3	4	3	2	3	3	2	4	3	3	2	4	4	3	4	3	2	3	3
110	2	1	1	2	2	2	2	3	2	2	2	1	1	2	2	2	3	2	2	3	2	1	2	3

LAMPIRAN D

- Hasil Nilai Peringkat *Et Cetera Restaurant*
- Hasil Nilai Peringkat *Blackpepper Restaurant*
- Hasil Nilai Peringkat *Speak Easy Restaurant*

Hasil Nilai Peringkat Di Cetera Restaurant																								
Responden	Atribut																							
	1	2	3	4	5	6	7	8	9	10	11	12	13	14	15	16	17	18	19	20	21	22	23	24
1	1	1	1	1	2	2	2	2	2	1	3	3	3	3	3	3	2	3	2	2	2	2	2	3
2	3	3	3	3	3	3	2	2	2	3	3	2	2	3	3	3	3	1	3	1	2	1	2	3
3	2	3	1	1	1	1	3	1	3	2	1	2	1	2	2	2	1	2	1	2	1	1	1	1
4	3	1	1	2	1	3	1	2	2	2	2	3	3	1	3	3	2	2	3	3	2	3	3	3
5	3	1	1	2	2	2	2	3	1	2	2	1	1	3	2	1	1	1	1	1	2	3	2	2
6	1	2	1	1	3	1	2	2	3	3	2	2	2	2	3	2	3	2	3	3	3	2	1	3
7	2	2	1	1	1	3	2	1	1	1	3	1	3	1	1	3	1	3	1	2	2	1	3	2
8	3	1	2	3	2	1	3	2	2	3	1	3	1	2	1	2	3	1	2	2	3	1	2	2
9	1	2	2	1	3	3	2	2	1	1	2	1	2	1	3	3	1	1	3	3	1	3	1	3
10	3	1	1	2	2	1	3	3	2	1	1	3	3	2	2	3	2	2	1	2	3	3	1	2
11	1	1	3	1	3	3	1	1	1	1	3	2	1	1	3	3	1	2	1	1	1	2	1	1
12	2	1	2	3	1	1	3	2	2	3	1	3	3	3	2	2	3	3	3	3	2	2	2	3
13	1	3	3	1	2	2	1	1	3	1	3	1	1	3	3	3	1	1	1	2	3	3	1	2
14	1	1	1	1	3	1	2	3	2	1	2	2	2	2	2	2	1	3	3	2	2	3	2	2
15	1	1	2	3	1	1	3	1	3	3	3	3	1	1	1	3	3	1	1	3	2	3	3	3
16	3	3	1	2	2	3	2	2	1	2	1	1	3	3	3	1	2	2	2	1	3	2	1	1
17	1	2	3	1	2	1	2	2	2	2	2	3	1	1	1	1	2	3	3	2	2	1	1	2
18	2	2	1	1	1	1	3	2	3	3	3	1	3	1	1	3	1	1	1	3	1	2	1	3
19	1	1	2	1	3	2	2	3	2	1	1	2	3	3	3	2	1	2	2	2	3	3	3	2
20	3	3	2	1	2	3	1	1	3	1	3	3	2	2	2	3	3	1	3	3	1	2	1	1
21	1	1	3	1	3	3	3	2	1	3	1	3	3	2	1	2	2	3	1	3	2	1	3	3
22	3	2	2	2	1	2	1	1	3	2	2	1	3	3	3	3	3	1	1	3	1	2	1	3
23	1	2	3	3	2	1	3	3	1	2	3	2	2	1	3	2	2	3	3	2	2	1	2	2
24	2	1	1	1	3	2	1	1	2	3	1	3	2	3	2	1	2	1	1	2	1	1	1	3
25	1	2	3	1	1	3	2	2	1	1	3	1	1	1	2	1	2	2	2	3	2	1	3	1
26	1	1	2	1	2	1	3	3	3	3	1	1	1	2	3	3	3	3	3	1	3	3	1	2
27	3	1	3	3	2	1	2	1	1	2	3	3	3	2	1	2	1	1	2	2	2	1	2	2
28	1	1	1	1	1	2	2	2	3	3	1	1	1	1	3	3	3	2	3	3	3	1	3	3
29	1	3	2	3	3	3	3	1	2	2	2	3	2	3	3	2	2	1	1	2	2	1	1	3
30	2	1	1	1	1	3	2	3	2	1	3	1	3	2	2	3	3	3	1	3	1	2	2	3
31	3	1	3	2	1	1	1	3	2	3	1	2	3	1	2	2	2	3	3	3	3	2	1	2
32	3	3	1	1	2	3	3	1	1	1	1	3	1	2	3	1	1	2	2	3	1	1	2	3
33	1	2	2	2	3	1	1	2	3	2	3	1	1	3	2	3	3	1	2	2	2	2	1	1
34	3	2	2	2	1	2	2	3	3	3	2	2	3	2	3	1	1	3	1	3	1	1	3	2
35	1	1	3	1	1	3	1	1	2	1	3	3	1	3	2	1	2	1	2	1	2	3	1	3
36	2	3	2	1	2	1	2	1	1	2	1	3	2	1	1	1	3	3	3	2	1	2	2	2
37	1	1	3	1	3	2	1	3	2	2	1	1	3	1	3	1	1	2	3	3	2	2	3	3
38	1	3	3	2	3	1	2	1	1	3	2	2	1	3	2	2	2	1	1	2	3	1	3	1

Hasil Nilai Peringkat El Cetera Restaurant																								
Responden	Atribut																							
	1	2	3	4	5	6	7	8	9	10	11	12	13	14	15	16	17	18	19	20	21	22	23	24
39	3	1	2	1	1	3	3	1	2	2	3	3	2	2	2	3	2	3	2	3	2	3	3	1
40	1	2	3	1	3	3	2	1	3	3	3	1	3	3	3	3	2	2	1	3	1	2	3	
41	1	1	1	3	2	2	2	3	3	2	2	1	2	2	1	3	2	1	3	1	1	3	2	2
42	2	1	2	1	3	1	3	3	2	2	3	2	3	2	3	2	2	2	3	3	2	1	1	2
43	3	2	2	1	1	3	1	3	1	3	1	3	2	3	2	3	3	1	1	2	3	2	3	1
44	3	1	3	1	2	2	2	2	3	2	2	2	3	1	1	3	2	3	2	2	3	1	1	2
45	1	2	1	3	2	1	3	2	2	2	3	2	1	3	3	1	3	1	1	1	1	2	3	3
46	3	1	3	1	3	3	1	2	3	3	2	3	3	2	3	2	1	3	3	2	1	3	1	1
47	3	3	2	3	1	1	3	3	2	2	3	1	2	1	2	3	2	3	2	3	3	1	2	3
48	1	1	3	1	3	1	1	2	2	2	1	2	1	3	2	3	3	1	2	2	2	2	1	2
49	1	3	3	3	2	2	2	1	3	3	1	3	3	2	1	2	3	1	1	1	3	2	2	3
50	1	1	2	1	1	1	1	2	1	1	3	2	3	1	1	2	1	2	3	2	1	3	3	1
51	1	1	2	1	1	3	3	2	1	1	2	3	1	3	3	1	1	1	1	2	3	1	2	3
52	1	1	1	2	2	2	1	3	3	2	2	1	2	2	2	3	2	3	2	2	1	2	1	1
53	1	1	2	3	3	3	3	2	3	1	3	1	3	2	1	1	3	2	1	1	2	3	3	1
54	2	2	3	3	2	3	2	1	1	2	2	2	1	3	3	2	1	1	1	1	1	1	2	1
55	3	1	1	1	2	1	2	2	1	3	3	2	1	2	2	1	1	3	1	1	3	3	3	3
56	1	2	2	3	1	1	2	1	3	1	1	1	3	3	3	2	3	1	2	1	1	2	2	1
57	1	1	3	1	3	1	1	2	3	2	1	3	1	1	2	1	1	2	3	3	3	3	1	2
58	1	3	3	2	2	1	3	3	1	1	3	2	3	2	3	2	2	3	1	1	2	1	3	3
59	3	3	3	3	2	3	3	2	1	3	2	2	1	1	2	3	2	2	2	1	2	3	1	1
60	1	2	3	1	3	2	2	1	2	3	2	1	2	3	2	2	2	2	1	3	2	1	2	2
61	3	2	2	2	1	1	1	3	3	1	1	3	3	2	3	3	3	3	2	2	1	2	3	3
62	1	1	2	1	1	3	2	2	1	3	2	1	3	1	2	1	1	2	1	3	3	1	2	2
63	2	1	1	2	3	1	2	1	3	3	3	2	1	3	3	2	1	3	2	1	3	2	3	3
64	1	2	3	1	2	2	1	2	2	1	3	1	3	2	2	3	3	3	3	3	2	1	1	2
65	1	3	2	3	3	3	3	1	3	2	1	1	1	2	1	2	1	2	2	1	1	3	2	2
66	1	1	1	1	1	2	3	2	1	3	2	1	2	1	3	3	3	1	3	1	3	1	1	1
67	1	3	2	2	3	3	1	3	1	1	2	2	3	3	2	2	2	1	3	1	2	3	2	2
68	1	1	2	2	2	3	1	2	2	1	3	2	1	2	2	3	2	3	2	3	2	2	3	2
69	3	2	1	3	3	2	2	1	3	3	3	1	2	1	3	1	3	2	3	1	3	1	3	3
70	1	3	1	3	1	3	2	3	3	1	2	2	3	3	3	2	2	3	2	2	3	2	2	2
71	2	3	2	2	2	2	2	2	3	3	3	1	3	2	2	3	2	1	1	3	2	3	2	2
72	1	1	2	2	1	3	3	1	2	2	1	2	1	3	2	3	3	2	2	1	1	2	1	3
73	1	3	2	1	3	3	3	1	2	2	2	1	2	2	1	1	3	3	3	3	2	1	3	1
74	2	2	1	1	2	2	2	1	1	3	1	2	3	3	2	1	2	1	2	1	2	3	3	3
75	1	1	3	1	3	1	1	1	2	2	2	3	1	2	3	3	2	3	2	1	3	2	1	2
76	3	1	3	2	1	1	3	2	2	1	1	2	2	3	3	1	3	3	1	1	3	2	1	3

Hasil Nilai Peringkat di Cetera Restaurant																								
Responden	Atribut																							
	1	2	3	4	5	6	7	8	9	10	11	12	13	14	15	16	17	18	19	20	21	22	23	24
77	2	1	2	2	3	3	3	3	3	3	2	2	1	2	2	1	1	2	2	3	2	1	2	2
78	3	2	2	1	2	2	2	2	1	2	3	1	3	3	3	3	1	1	3	1	1	3	2	3
79	2	1	1	3	1	3	1	1	2	1	2	2	1	1	1	2	2	1	3	2	3	3	3	2
80	1	2	1	3	1	1	2	1	2	3	3	3	2	3	1	3	3	3	1	3	2	2	2	2
81	3	2	3	1	3	2	3	1	2	1	1	2	3	1	2	3	3	2	1	2	1	2	3	3
82	2	2	1	2	1	3	1	3	2	2	2	3	1	3	1	1	1	2	3	2	2	2	1	1
83	3	3	2	2	1	1	2	3	3	3	3	1	2	3	3	1	1	1	3	3	2	1	3	2
84	2	3	3	3	2	2	3	2	3	2	3	2	2	2	1	3	3	3	1	2	3	3	3	3
85	1	3	1	1	3	2	3	3	2	3	1	3	1	1	2	2	3	3	3	3	1	3	1	1
86	1	1	1	2	3	1	1	2	1	2	1	3	3	3	3	2	2	1	2	2	2	1	1	2
87	2	3	1	1	3	1	1	1	1	3	3	1	1	2	2	3	1	1	3	2	2	2	3	1
88	3	1	1	3	2	3	3	2	2	1	1	1	2	1	1	3	1	2	3	3	2	3	2	2
89	2	2	3	1	1	1	3	1	3	2	1	3	3	1	3	1	2	2	1	2	1	3	1	3
90	2	3	1	1	2	1	1	3	1	3	2	1	1	3	2	2	1	3	2	2	3	1	2	1
91	2	3	2	3	3	3	3	1	1	2	2	1	1	1	1	3	2	3	2	3	2	2	3	2
92	3	1	2	1	2	1	3	1	1	3	3	3	3	2	3	2	3	1	1	2	3	3	3	1
93	2	3	1	2	3	3	1	3	3	1	1	2	2	2	3	2	2	2	1	2	1	1	1	1
94	1	2	1	2	2	2	1	2	2	1	1	3	3	2	2	3	1	3	2	3	2	1	3	3
95	1	1	1	2	2	1	1	3	2	3	1	3	2	3	3	2	3	1	1	1	1	2	1	3
96	2	1	1	2	1	3	1	1	1	2	3	3	3	1	1	1	2	2	3	1	3	3	2	2
97	1	1	3	3	1	3	3	3	1	2	3	3	2	2	1	1	2	3	3	2	1	1	3	1
98	2	3	2	1	1	3	3	3	3	1	1	2	1	3	3	2	1	2	1	1	1	3	1	2
99	1	2	2	2	1	3	1	1	3	2	2	1	3	1	2	3	3	1	2	2	3	2	2	3
100	1	2	2	3	3	1	3	1	1	1	2	2	2	3	1	2	1	2	3	3	3	1	1	1
101	3	1	2	2	2	2	1	3	1	2	1	2	3	1	3	1	2	3	2	2	1	1	2	3
102	1	1	2	1	1	2	3	1	2	3	3	3	2	3	2	2	3	1	1	2	3	1	1	1
103	1	2	3	3	1	2	3	2	2	3	2	2	1	1	3	1	2	2	3	2	3	3	3	2
104	2	1	1	2	2	1	3	3	3	1	2	3	3	2	2	2	3	2	2	1	1	2	1	1
105	1	2	1	3	3	1	2	3	3	2	1	3	1	2	3	1	2	3	2	3	1	2	2	2
106	1	1	2	2	2	3	2	2	2	2	3	1	1	1	2	2	3	1	1	3	1	3	2	3
107	2	3	3	1	1	1	2	2	2	3	1	3	1	3	1	1	1	2	3	2	1	2	3	2
108	3	3	2	3	1	2	2	3	1	3	2	2	1	2	3	2	2	1	3	1	3	1	3	1
109	3	3	2	1	3	3	3	2	3	1	1	2	2	1	2	3	3	2	2	2	3	1	1	2
110	1	1	3	2	1	3	1	2	2	3	1	1	3	2	2	2	2	3	1	2	1	2	1	1

Hasil Nilai Peringkat Blackpepper Restaurant																								
Responden	Atribut																							
	1	2	3	4	5	6	7	8	9	10	11	12	13	14	15	16	17	18	19	20	21	22	23	24
1	3	3	2	2	3	3	1	1	1	3	2	2	2	2	2	1	1	3	2	3	1	1	1	1
2	1	1	2	2	2	1	3	1	3	2	1	3	3	2	1	1	2	1	3	1	3	3	3	1
3	1	1	2	3	2	2	1	3	1	1	2	1	3	3	3	3	1	2	1	3	1	3	2	3
4	2	2	3	1	3	2	3	1	1	1	3	1	2	2	2	2	3	3	2	2	3	1	1	2
5	1	3	2	3	3	3	1	1	3	3	3	2	2	1	1	3	3	2	3	2	3	2	3	3
6	2	1	2	2	1	2	3	1	2	1	1	3	1	3	1	1	1	1	2	1	1	1	2	1
7	3	3	3	3	2	1	3	2	2	2	1	3	1	2	3	2	2	2	3	3	1	3	2	3
8	1	2	3	1	3	2	1	3	1	1	2	1	2	3	2	3	1	2	3	1	2	2	1	1
9	3	3	1	2	2	1	1	1	3	3	3	3	3	2	1	1	3	3	2	2	2	2	3	1
10	2	3	2	3	3	2	2	1	1	2	3	2	1	1	1	2	1	1	2	1	1	1	2	1
11	2	2	1	2	2	1	2	2	3	3	1	3	3	2	1	1	3	3	3	3	2	3	2	3
12	3	3	3	1	3	2	1	3	1	1	3	2	1	1	3	3	1	1	1	1	1	1	3	2
13	3	1	2	3	3	3	2	3	2	3	2	3	2	2	2	2	3	3	2	1	1	2	2	1
14	3	2	2	2	1	2	1	1	1	2	3	1	3	3	1	1	2	1	1	3	1	1	1	3
15	3	3	1	2	2	2	1	3	1	2	2	2	3	3	3	1	2	2	2	2	3	1	1	2
16	1	2	3	1	3	2	1	3	2	3	3	3	1	1	1	3	3	3	3	3	1	1	2	3
17	3	1	1	3	1	2	3	3	1	1	1	2	3	3	2	2	1	2	1	1	1	3	3	1
18	3	3	2	2	3	3	1	1	2	1	2	3	2	2	3	1	3	3	2	2	3	1	2	2
19	3	3	1	2	1	1	1	1	3	3	3	3	1	2	1	1	3	3	3	3	2	1	1	3
20	2	2	1	3	3	2	3	2	1	2	2	2	1	3	1	1	1	3	2	1	2	1	2	3
21	3	3	1	2	2	1	2	3	3	2	3	2	2	3	3	3	1	1	3	2	1	3	1	2
22	2	1	3	1	3	3	2	3	1	3	3	3	2	2	2	2	2	3	2	1	3	1	2	1
23	3	3	1	2	3	2	1	1	2	1	2	3	3	3	1	1	3	1	2	1	1	2	3	3
24	1	2	2	2	1	1	2	3	3	1	2	2	1	1	3	3	3	2	3	3	3	3	2	2
25	3	3	1	3	2	1	1	1	3	3	2	2	2	3	1	2	1	3	1	2	1	2	1	3
26	3	3	3	2	3	2	1	1	1	1	3	3	3	3	2	1	1	2	2	3	2	2	2	1
27	1	2	2	1	1	3	1	2	3	1	2	1	1	1	3	1	3	3	3	1	1	3	3	3
28	3	3	2	2	3	1	3	3	2	2	3	2	2	2	2	1	1	3	1	2	1	3	2	1
29	2	1	1	1	1	2	1	3	1	3	3	1	1	1	1	3	1	3	2	3	1	2	3	2
30	3	2	3	2	2	1	1	1	1	2	2	2	2	1	3	2	2	2	2	1	3	3	3	1
31	1	3	1	3	2	3	3	1	1	2	2	3	1	3	1	1	3	1	2	2	2	1	3	3
32	2	2	2	2	1	1	2	3	2	3	3	1	3	1	2	3	2	3	1	1	2	3	3	2
33	2	1	1	1	2	2	2	1	1	1	1	2	3	2	3	1	2	3	3	3	1	1	3	3
34	2	3	1	1	3	3	1	2	2	2	3	3	2	1	2	2	3	2	3	2	3	2	1	1
35	3	3	1	3	2	2	3	3	1	3	2	2	2	2	3	3	1	2	1	3	1	1	3	2
36	1	2	3	2	3	3	1	3	2	3	3	2	1	2	3	2	2	1	2	1	3	3	1	3
37	3	3	1	2	2	3	3	1	3	1	3	2	1	3	1	3	3	1	1	2	1	1	1	1
38	3	2	2	3	1	3	1	2	3	1	3	3	2	2	3	3	3	2	2	3	1	2	2	2

Hasil Nilai Peringkat Blackpepper Restaurant																								
Responden	Atribut																							
	1	2	3	4	5	6	7	8	9	10	11	12	13	14	15	16	17	18	19	20	21	22	23	24
39	1	3	3	2	3	2	2	3	1	3	2	2	3	1	1	2	1	1	3	1	1	1	1	2
40	3	1	2	2	2	1	1	3	2	1	1	3	1	2	2	1	1	3	3	2	1	2	3	1
41	2	3	2	2	3	3	1	2	1	3	3	3	1	1	3	2	3	2	2	2	2	1	3	1
42	3	2	3	2	1	3	1	1	1	3	2	3	1	1	2	1	3	3	1	1	1	2	3	3
43	1	3	3	3	2	2	2	1	2	1	3	2	1	2	3	2	1	3	3	1	2	3	1	3
44	2	3	2	2	3	1	3	1	1	3	1	1	2	3	2	1	3	2	3	3	1	3	2	1
45	2	3	3	1	3	2	1	1	3	1	2	3	2	1	2	3	1	2	2	3	3	1	1	2
46	2	3	1	2	2	1	3	1	2	1	3	2	1	3	2	3	2	1	1	1	3	1	3	3
47	1	2	3	1	3	3	1	2	1	3	1	3	1	3	1	2	1	1	1	2	2	2	1	1
48	3	3	1	2	2	2	2	1	1	3	2	1	2	1	1	1	2	3	3	3	3	1	3	1
49	3	2	2	1	3	3	3	2	1	1	2	2	2	1	2	1	2	3	3	3	1	1	1	2
50	3	3	1	2	2	3	3	3	3	2	1	3	2	2	3	3	2	1	2	1	3	1	2	3
51	3	2	3	3	3	2	1	1	2	2	1	1	3	1	1	2	3	3	2	3	1	3	1	2
52	2	3	3	1	1	1	3	1	2	1	1	2	3	3	3	2	1	2	3	1	2	3	3	2
53	3	2	1	2	1	1	2	1	1	2	2	2	2	1	2	2	2	3	3	3	3	1	2	3
54	3	1	2	1	3	1	1	3	3	3	3	1	2	2	2	1	2	2	3	2	3	2	1	2
55	1	3	2	3	3	3	1	1	2	2	1	1	3	3	3	3	3	1	2	3	1	2	2	2
56	3	1	3	1	2	3	1	3	2	3	2	3	1	2	2	1	1	3	3	2	3	3	3	2
57	2	2	1	2	1	2	2	1	1	1	2	1	2	2	1	3	3	1	1	2	2	1	2	3
58	3	2	2	3	3	3	1	2	2	2	1	1	1	3	1	1	3	1	2	2	1	2	1	2
59	2	2	1	2	3	2	2	1	2	2	1	3	2	2	1	1	1	1	1	3	1	2	3	2
60	3	1	1	3	2	3	1	2	3	2	3	3	3	1	3	3	3	1	3	1	1	3	3	1
61	2	3	1	3	3	2	2	1	2	2	3	2	2	3	2	1	1	1	1	1	2	1	1	2
62	3	3	3	3	2	1	1	1	2	2	1	2	1	2	1	2	2	1	3	2	2	2	1	3
63	1	2	2	3	2	3	1	3	2	2	2	3	2	2	1	1	3	1	1	3	1	1	2	2
64	3	3	1	3	3	1	2	1	1	2	1	3	1	1	1	2	1	2	2	2	1	2	3	1
65	3	1	3	1	1	1	1	3	1	3	2	3	2	3	3	1	3	3	1	2	2	1	1	1
66	3	2	3	3	3	1	2	1	2	1	3	2	3	2	2	2	1	3	1	3	1	3	2	3
67	2	2	3	1	2	1	2	1	3	2	3	3	1	1	1	3	1	2	2	2	3	2	3	1
68	3	2	1	1	3	2	2	1	3	2	2	1	2	3	3	1	1	1	1	2	1	1	1	3
69	2	3	3	2	1	3	3	2	1	2	1	2	3	2	2	2	2	3	2	2	2	3	1	2
70	3	1	3	1	3	1	3	1	2	3	3	1	2	2	1	1	3	1	1	3	1	3	3	1
71	1	2	3	3	3	1	1	3	2	2	1	3	1	1	3	2	1	2	2	2	1	1	1	1
72	3	2	1	3	2	1	2	2	3	3	2	1	2	1	1	1	2	3	1	3	2	3	2	2
73	3	2	1	2	1	2	1	3	3	1	1	3	1	3	2	3	1	2	1	2	3	3	2	3
74	1	1	3	3	3	3	1	3	2	2	3	1	1	2	3	3	3	3	1	2	1	1	2	1
75	3	3	1	3	2	3	2	2	3	3	1	2	2	1	2	2	1	1	1	3	2	3	3	3
76	1	3	1	3	3	2	1	1	1	2	3	1	3	1	2	2	1	2	2	2	1	3	3	2

Hasil Nilai Peringkat Blackpepper Restaurant																								
Responden	Atribut																							
	1	2	3	4	5	6	7	8	9	10	11	12	13	14	15	16	17	18	19	20	21	22	23	24
77	1	3	3	3	1	1	2	1	2	1	1	1	3	1	1	2	2	3	3	2	1	3	1	1
78	2	3	1	3	3	3	1	3	2	1	2	3	1	2	2	1	3	2	2	2	2	1	1	2
79	3	2	2	1	3	1	2	2	1	2	1	1	3	3	2	1	1	3	1	3	2	1	2	3
80	3	1	3	1	2	2	3	3	3	2	1	2	3	1	3	2	1	2	3	2	3	3	3	1
81	2	3	1	2	1	3	1	3	1	2	2	1	2	3	1	1	2	3	2	1	2	1	2	1
82	1	1	2	1	2	2	3	1	1	1	1	1	3	2	2	2	3	1	2	1	1	1	3	2
83	1	1	1	3	3	3	1	1	2	2	2	2	1	2	1	2	2	3	2	2	3	3	1	1
84	1	1	2	1	3	3	2	1	1	1	1	1	3	3	3	1	1	2	3	3	1	1	2	2
85	3	1	3	3	2	3	1	1	1	2	3	2	3	1	1	1	2	1	1	2	3	2	2	2
86	3	2	2	3	2	2	3	3	3	1	3	1	2	1	2	1	1	2	3	1	1	3	2	3
87	1	2	2	3	1	3	2	2	2	1	2	3	3	3	1	2	2	3	1	1	3	3	1	3
88	1	2	3	1	1	1	2	3	3	2	2	3	3	2	3	2	3	1	2	2	1	2	1	1
89	3	3	1	2	3	2	1	2	1	3	3	2	2	3	2	3	1	3	3	1	2	1	3	2
90	1	1	2	3	3	3	3	2	3	1	1	2	2	1	3	3	2	1	3	3	2	2	1	3
91	3	2	1	1	2	2	2	2	3	1	1	2	3	2	2	2	1	1	1	2	1	3	2	1
92	1	2	3	2	1	3	2	3	2	2	1	1	1	1	2	1	2	3	3	1	1	2	1	3
93	1	1	3	1	2	2	3	1	1	3	2	1	1	3	2	1	1	1	3	1	3	3	3	2
94	3	1	2	3	1	3	3	1	1	3	2	2	1	3	1	2	3	2	1	2	1	2	1	1
95	3	3	2	3	1	2	3	2	1	1	2	1	3	1	1	1	2	3	2	3	2	3	2	2
96	1	3	2	1	2	1	2	3	2	3	2	2	2	3	2	2	3	1	2	3	1	2	3	1
97	3	2	1	2	2	2	2	2	3	1	1	1	3	3	3	3	1	1	1	3	3	3	2	2
98	1	1	3	2	3	1	1	2	2	2	3	3	3	1	1	3	2	3	3	3	2	2	3	3
99	3	1	3	1	2	2	3	3	1	1	3	2	1	3	3	1	2	3	3	1	2	1	1	2
100	3	3	3	2	2	3	1	2	2	2	3	3	3	2	2	1	2	3	2	2	1	2	3	2
101	1	3	1	1	3	3	3	2	3	3	2	1	2	3	2	3	1	1	1	1	3	3	3	2
102	3	3	1	3	2	1	1	3	3	1	1	2	1	1	3	1	2	3	2	1	2	2	3	3
103	2	3	1	2	3	3	2	3	1	2	1	3	3	3	2	3	3	1	1	1	2	2	1	1
104	3	2	3	1	1	3	1	2	2	3	3	1	1	3	1	1	2	1	1	2	3	1	3	2
105	3	1	3	2	1	3	3	2	1	1	3	2	2	1	1	3	3	2	3	1	3	3	1	3
106	2	3	3	3	3	1	3	1	1	1	2	2	3	2	1	1	2	2	3	2	3	2	1	2
107	3	2	1	2	3	2	1	1	1	1	2	2	2	1	3	3	2	3	2	1	2	3	2	1
108	1	1	3	1	2	3	3	2	3	2	3	1	3	1	2	1	3	2	2	2	2	2	1	2
109	2	1	3	3	1	1	1	1	2	3	3	3	3	3	1	2	1	1	3	3	1	3	3	3
110	2	3	2	3	3	1	2	3	3	2	3	3	2	1	3	1	1	1	3	3	3	1	2	3

Hasil Niki Peringkat Speak Easy Restaurant																								
Responden	Atribut																							
	1	2	3	4	5	6	7	8	9	10	11	12	13	14	15	16	17	18	19	20	21	22	23	24
1	2	2	3	3	1	1	3	3	3	2	1	1	1	1	1	2	2	1	1	1	3	3	3	2
2	2	2	1	1	1	2	1	3	1	1	2	1	1	1	2	2	1	2	2	2	2	1	2	2
3	3	2	3	2	3	3	2	2	2	3	3	3	2	1	1	1	3	3	3	2	3	2	3	2
4	1	3	2	3	2	1	2	3	3	3	1	2	1	3	1	1	1	1	1	1	1	2	2	1
5	2	2	3	1	1	1	3	2	2	1	2	3	3	2	3	2	2	3	2	3	1	1	1	1
6	3	3	3	3	2	3	1	3	1	2	3	1	3	1	2	3	2	3	1	2	2	3	3	2
7	1	1	2	2	3	2	1	3	3	3	2	2	2	3	2	1	3	1	2	1	3	2	1	1
8	2	3	1	2	1	3	2	1	3	2	3	2	3	1	3	1	2	3	1	3	1	3	3	3
9	2	1	3	3	1	2	3	3	2	2	1	2	1	3	2	2	2	2	1	1	3	1	2	2
10	1	2	3	1	1	3	1	2	3	3	2	1	2	3	3	1	3	3	3	3	2	2	3	3
11	3	3	2	3	1	2	3	3	2	2	2	1	2	3	2	2	2	1	2	2	3	1	3	2
12	1	2	1	2	2	3	2	1	3	2	2	1	2	2	1	1	2	2	2	2	3	3	1	1
13	2	2	1	2	1	1	3	2	1	2	1	2	3	1	1	1	2	2	3	3	2	1	3	3
14	2	3	3	3	2	3	3	2	3	3	1	3	1	1	3	3	3	2	2	1	3	2	3	1
15	2	2	3	1	3	3	2	2	2	1	1	1	2	2	2	2	1	3	3	1	1	2	2	1
16	2	1	2	3	1	1	3	1	3	1	2	2	2	2	2	2	1	1	1	2	2	3	3	2
17	2	3	2	2	3	3	1	1	3	3	3	1	2	2	3	3	3	1	2	3	3	2	2	3
18	1	1	3	3	2	2	2	3	1	2	1	2	1	3	2	2	2	2	3	1	2	3	3	1
19	2	2	3	3	2	3	3	2	1	2	2	1	2	1	2	3	2	1	1	1	1	2	2	1
20	1	1	3	2	1	1	2	3	2	3	1	1	3	1	3	2	2	2	1	2	3	3	3	2
21	2	2	2	3	1	2	1	1	2	1	2	1	1	1	2	1	3	2	2	1	3	2	2	1
22	1	3	1	3	2	1	3	2	2	1	1	2	1	1	1	1	1	2	3	2	2	3	3	2
23	2	1	2	1	1	3	2	2	3	3	1	1	1	2	2	3	1	2	1	3	3	3	1	1
24	3	3	3	3	2	3	3	2	1	2	3	1	3	2	1	2	1	3	2	1	2	2	3	1
25	2	1	2	2	3	2	3	3	2	2	1	3	3	2	3	3	3	1	3	1	3	3	2	2
26	2	2	1	3	1	3	2	2	2	2	2	2	2	1	1	2	2	1	1	2	1	1	3	3
27	2	3	1	2	3	2	3	3	2	3	1	2	2	3	2	3	2	2	1	3	3	2	1	1
28	2	2	3	3	2	3	1	1	1	1	2	3	3	3	1	2	2	1	2	1	2	2	1	2
29	3	2	3	2	2	1	2	2	3	1	1	2	3	1	2	1	3	2	3	1	3	3	2	1
30	1	3	2	3	3	2	3	2	3	3	1	3	1	3	1	1	1	1	3	2	2	1	1	2
31	2	2	2	1	3	2	2	2	3	1	3	1	2	2	3	3	1	2	1	1	1	3	2	1
32	1	1	3	3	3	2	1	2	3	2	2	2	2	3	1	2	3	1	3	2	3	2	1	1
33	3	3	3	3	1	3	3	3	2	3	2	3	2	1	1	2	1	2	1	1	3	3	2	2
34	1	1	3	3	2	1	3	1	1	1	1	1	1	3	1	3	2	1	2	1	2	3	2	3
35	2	2	2	2	3	1	2	2	3	2	1	1	3	1	1	2	3	3	3	2	3	2	2	1
36	3	1	1	3	1	2	3	2	3	1	2	1	3	3	2	3	1	2	1	3	2	1	3	1
37	2	2	2	3	1	1	2	2	1	3	2	3	2	2	2	2	2	3	2	1	3	3	2	2
38	2	1	1	1	2	2	3	3	2	2	1	1	3	1	1	1	1	3	3	1	2	3	1	3

Hasil Niki Peringkat Speak Easy Restaurant																								
Responden	Atribut																							
	1	2	3	4	5	6	7	8	9	10	11	12	13	14	15	16	17	18	19	20	21	22	23	24
39	2	2	1	3	2	1	1	2	3	1	1	1	1	3	3	1	3	2	1	2	3	2	2	3
40	2	3	1	3	1	2	3	2	1	2	2	2	2	1	1	2	2	1	1	3	2	3	1	2
41	3	2	3	1	1	1	3	1	2	1	1	2	3	3	2	1	1	3	1	3	3	2	1	3
42	1	3	1	3	2	2	2	2	3	1	1	1	2	3	1	3	1	1	2	2	3	3	2	1
43	2	1	1	2	3	1	3	2	3	2	2	1	3	1	1	1	2	2	2	3	1	1	2	2
44	1	2	1	3	1	3	1	3	2	1	3	3	1	2	3	2	1	1	1	1	2	2	3	3
45	3	1	2	2	1	3	2	3	1	3	1	1	3	2	1	2	2	3	3	2	2	3	2	1
46	1	2	2	3	1	2	2	3	1	2	1	1	2	1	1	1	3	2	2	3	2	2	2	2
47	2	1	1	2	2	2	2	1	3	1	2	2	3	2	3	1	3	2	3	1	1	3	3	2
48	2	2	2	3	1	3	3	3	3	1	3	3	3	2	3	2	1	2	1	1	1	3	2	3
49	2	1	1	2	1	1	1	3	2	2	3	1	1	3	3	3	1	2	2	2	2	3	3	1
50	2	2	3	3	3	2	2	1	2	3	1	1	1	3	2	1	3	3	1	3	2	2	1	2
51	2	3	1	2	2	1	2	3	3	3	3	2	2	2	2	3	2	2	3	1	2	2	3	1
52	3	2	2	3	3	3	2	2	1	3	3	3	1	1	1	1	3	1	1	3	3	1	2	3
53	2	3	3	1	2	2	1	3	2	3	1	3	1	3	3	3	1	1	2	2	1	2	1	2
54	1	3	1	2	1	2	3	2	2	1	1	3	3	1	1	3	3	3	2	3	2	3	3	3
55	2	2	3	2	1	2	3	3	3	1	2	3	2	1	1	2	2	2	3	2	2	1	1	1
56	2	3	1	2	3	2	3	2	1	2	3	2	2	1	1	3	2	2	1	3	2	1	1	3
57	3	3	2	3	2	3	3	3	2	3	3	2	3	3	3	2	2	3	2	1	1	2	3	1
58	2	1	1	1	1	2	2	1	3	3	1	3	2	1	2	3	1	2	3	3	3	3	2	1
59	1	1	2	1	1	1	1	3	3	1	3	1	3	3	3	2	3	3	3	2	3	1	2	3
60	2	3	2	2	1	1	3	3	1	1	1	2	1	2	1	1	1	3	2	2	3	2	1	3
61	1	1	3	1	2	3	3	2	1	3	2	1	1	1	1	2	2	2	3	3	3	3	2	1
62	2	2	1	2	3	2	3	3	3	1	3	3	2	3	3	3	3	3	2	1	1	3	3	1
63	3	3	3	1	1	2	3	2	1	1	1	1	3	1	2	3	2	2	3	2	2	3	1	1
64	2	1	2	2	1	3	3	3	3	3	2	2	2	3	3	1	2	1	1	1	3	3	2	3
65	2	2	1	2	2	2	2	2	2	1	3	2	3	1	2	3	2	1	3	3	3	2	3	3
66	2	3	2	2	2	3	1	3	3	2	1	3	1	3	1	1	2	2	2	2	2	2	3	2
67	3	1	1	3	1	2	3	2	2	3	1	1	2	2	3	1	3	3	1	3	1	1	1	3
68	2	3	3	3	1	1	3	3	1	3	1	3	3	1	1	2	3	2	3	1	3	3	2	1
69	1	1	2	1	2	1	1	3	2	1	2	3	1	3	1	3	1	1	1	3	1	2	2	1
70	2	2	2	2	2	2	1	2	1	2	1	3	1	1	2	3	1	2	3	1	2	1	1	3
71	3	1	1	1	1	3	3	1	1	1	2	2	2	3	1	1	3	3	3	1	3	2	3	3
72	2	3	3	1	3	2	1	3	1	1	3	3	3	2	3	2	1	1	3	2	3	1	3	1
73	2	1	3	3	2	1	2	2	1	3	3	2	3	1	3	2	2	1	2	1	1	2	1	2
74	3	3	2	2	1	1	3	2	3	1	2	3	2	2	1	2	1	2	3	3	3	2	1	2
75	2	2	2	2	1	2	3	3	1	1	3	1	3	3	1	1	3	2	3	2	1	1	2	1
76	2	2	2	1	2	3	2	3	3	3	2	3	1	1	1	3	2	1	3	3	2	1	2	1

Hasil Nihai Peringkat. Speak Easy Restaurant																								
Responden	Atribut																							
	1	2	3	4	5	6	7	8	9	10	11	12	13	14	15	16	17	18	19	20	21	22	23	24
77	3	2	1	1	2	2	1	2	1	2	3	3	2	3	3	3	3	1	1	1	3	2	3	3
78	1	1	3	2	1	1	3	1	3	3	2	2	2	2	2	2	3	1	3	3	2	3	1	
79	1	3	3	2	2	2	3	3	3	3	3	2	2	3	3	3	2	2	1	1	2	1	1	
80	2	3	2	2	3	3	1	2	1	1	2	1	1	1	2	1	2	1	2	1	1	1	1	3
81	1	1	2	3	2	1	2	2	3	3	3	3	1	2	3	2	1	1	3	3	3	3	1	2
82	3	3	3	3	3	1	2	2	3	3	3	2	2	2	3	3	2	3	1	3	3	3	2	3
83	2	2	3	1	2	2	3	2	1	1	1	3	3	1	2	3	3	2	1	1	1	2	2	3
84	3	2	1	2	1	1	1	3	2	3	2	3	1	1	2	2	2	1	2	1	2	2	1	1
85	2	2	2	2	1	1	2	2	3	1	2	1	2	3	3	3	1	2	2	1	2	1	3	3
86	2	3	3	1	1	3	2	1	2	3	2	2	1	2	1	3	3	3	1	3	3	2	3	1
87	3	1	3	2	2	2	3	3	3	2	1	2	2	1	3	1	3	2	2	3	1	1	2	2
88	2	3	2	2	3	2	1	1	1	3	3	2	1	3	2	1	2	3	1	1	3	1	3	3
89	1	1	2	3	2	3	2	3	2	1	2	1	1	2	1	2	3	1	2	3	3	2	2	1
90	3	2	3	2	1	2	2	1	2	2	3	3	3	2	1	1	3	2	1	1	1	3	3	2
91	1	1	3	2	1	1	1	3	2	3	3	3	2	3	3	1	3	2	3	1	3	1	1	3
92	2	3	1	3	3	2	1	2	3	1	2	2	2	3	1	3	1	2	2	3	2	1	2	2
93	3	2	2	3	1	1	2	2	2	2	3	3	3	1	1	3	3	3	2	3	2	2	2	3
94	2	3	3	1	3	1	2	3	3	2	3	1	2	1	3	1	2	1	3	1	3	3	2	2
95	2	2	3	1	3	3	2	1	3	2	3	2	1	2	2	3	1	2	3	2	3	1	3	1
96	3	2	3	3	3	2	3	2	3	1	1	1	1	2	3	3	1	3	1	2	2	1	1	3
97	2	3	2	1	3	1	1	1	2	3	2	2	1	1	2	2	3	2	2	1	2	2	1	3
98	3	2	1	3	2	2	2	1	1	3	2	1	2	2	2	1	3	1	2	2	3	1	2	1
99	2	3	1	3	3	1	2	2	2	3	1	3	2	2	1	2	1	2	1	3	1	3	3	1
100	2	1	1	1	1	2	2	3	3	3	1	1	1	1	3	3	3	1	1	1	2	3	2	3
101	2	2	3	3	1	1	2	1	2	1	3	3	1	2	1	2	3	2	3	3	2	2	1	1
102	2	2	3	2	3	3	2	2	1	2	2	1	3	2	1	3	1	2	3	3	1	3	2	2
103	3	1	2	1	2	1	1	1	3	1	3	1	2	2	1	2	1	3	2	3	1	1	2	3
104	1	3	2	3	3	2	2	1	1	2	1	2	2	1	3	3	1	3	3	3	2	3	2	3
105	2	3	2	1	2	2	1	1	2	3	2	1	3	3	2	2	1	1	1	2	2	1	3	1
106	3	2	1	1	1	2	1	3	3	3	1	3	2	3	2	3	1	3	2	1	2	1	3	1
107	1	1	2	3	2	3	3	3	3	2	3	1	3	1	2	2	3	1	1	3	3	1	1	3
108	2	2	1	2	3	1	1	1	2	1	1	3	2	3	1	3	1	3	1	3	1	3	2	3
109	1	2	1	2	2	2	2	3	1	2	2	1	1	2	3	1	2	3	1	1	2	2	2	1
110	3	2	1	1	2	2	3	1	1	1	2	2	1	3	1	3	3	2	2	1	2	3	3	2

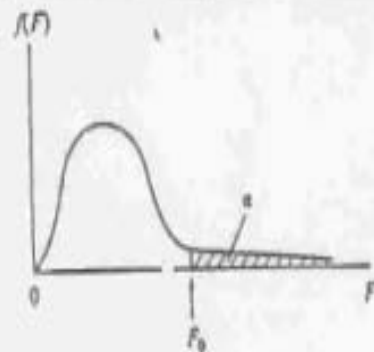
LAMPIRAN E

- **Tabel *Chi Square***
- **Tabel Nilai-nilai r Product Moment**
- **Tabel Distribusi F**

v	α							
	0,995	0,99	0,975	0,95	0,05	0,025	0,01	0,005
1	0,0 ⁴ 393	0,0 ³ 157	0,0 ³ 982	0,0 ² 393	3,841	5,024	6,635	7,879
2	0,0100	0,0201	0,0506	0,103	5,991	7,378	9,210	10,597
3	0,0717	0,115	0,216	0,352	7,815	9,348	11,345	12,838
4	0,207	0,297	0,484	0,711	9,488	11,143	13,277	14,860
5	0,412	0,554	0,831	1,145	11,070	12,832	15,086	16,750
6	0,676	0,872	1,237	1,635	12,592	14,449	16,812	18,548
7	0,989	1,239	1,690	2,167	14,067	16,013	18,475	20,278
8	1,344	1,646	2,180	2,733	15,507	17,535	20,09	21,955
9	1,735	2,088	2,700	3,325	16,919	19,023	21,666	23,589
10	2,156	2,558	3,247	3,940	18,307	20,483	23,209	25,188
11	2,603	3,053	3,816	4,575	19,675	21,920	24,725	26,757
12	3,074	3,571	4,404	5,226	21,026	23,337	26,217	28,300
13	3,565	4,107	5,009	5,892	22,362	24,736	27,688	29,819
14	4,075	4,660	5,629	6,571	23,685	26,119	29,141	31,319
15	4,601	5,229	6,262	7,261	24,996	27,488	30,578	32,801
16	5,142	5,812	6,908	7,962	26,296	28,845	32,000	34,267
17	5,697	6,408	7,564	8,672	27,587	30,191	33,409	35,718
18	6,265	7,015	8,231	9,390	28,869	31,526	34,805	37,156
19	6,844	7,633	8,907	10,117	30,144	32,852	36,191	38,582
20	7,434	8,260	9,591	10,851	31,410	34,170	37,566	39,997
21	8,034	8,897	10,283	11,591	32,671	35,479	38,932	41,401
22	8,643	9,542	10,982	12,338	33,924	36,781	40,289	42,796
23	9,260	10,196	11,689	13,091	35,172	38,076	41,638	44,181
24	9,886	10,856	12,401	13,848	36,415	39,364	42,980	45,558
25	10,520	11,524	13,120	14,611	37,652	40,646	44,314	46,928
26	11,160	12,198	13,844	15,379	38,885	41,923	45,642	48,290
27	11,808	12,879	14,573	16,151	40,113	43,194	46,963	49,645
28	12,461	13,565	15,308	16,928	41,337	44,461	48,278	50,993
29	13,121	14,256	16,047	17,708	42,557	45,722	49,588	52,336
30	13,787	14,953	16,791	18,493	43,773	46,979	50,892	53,672

N	Tarf Signif		N	Tarf Signif		N	Tarf Signif	
	5%	1%		5%	1%		5%	1%
3	0,997	0,999	27	0,381	0,487	55	0,266	0,345
4	0,950	0,99	28	0,374	0,478	60	0,254	0,330
5	0,878	0,959	29	0,367	0,470	65	0,244	0,317
6	0,811	0,917	30	0,361	0,463	70	0,235	0,306
7	0,754	0,874	31	0,355	0,456	75	0,227	0,296
8	0,707	0,834	32	0,349	0,449	80	0,220	0,286
9	0,666	0,798	33	0,344	0,442	85	0,213	0,278
10	0,632	0,765	34	0,339	0,436	90	0,207	0,270
11	0,602	0,735	35	0,334	0,430	95	0,202	0,263
12	0,576	0,708	36	0,329	0,424	100	0,195	0,256
13	0,553	0,684	37	0,325	0,418	125	0,176	0,230
14	0,532	0,661	38	0,320	0,413	150	0,159	0,210
15	0,514	0,641	39	0,316	0,408	175	0,148	0,194
16	0,497	0,623	40	0,312	0,403	200	0,138	0,181
17	0,482	0,606	41	0,308	0,398	300	0,113	0,148
18	0,468	0,590	42	0,304	0,393	400	0,098	0,128
19	0,456	0,575	43	0,301	0,389	500	0,088	0,115
20	0,444	0,561	44	0,297	0,384	600	0,080	0,105
21	0,433	0,549	45	0,294	0,380	700	0,074	0,097
22	0,423	0,537	46	0,291	0,376	800	0,070	0,091
23	0,413	0,526	47	0,288	0,372	900	0,065	0,086
24	0,404	0,515	48	0,284	0,368	1000	0,062	0,081
25	0,396	0,505	49	0,281	0,364			
26	0,388	0,496	50	0,279	0,361			

Table B-6 The F distribution ($\alpha = 0.10, 0.05, \text{ and } 0.01$)



Given ν_1 and ν_2 , the table gives the F_α value with α of the area above it, that is,
 $P(F \geq F_\alpha) = \alpha$

		ν_1 (numerator)																						
ν_2	α	1	2	3	4	5	6	7	8	9	10	11	12	14	15	19	20	24	30	50	100	500	∞	
1	.10	39.9	49.3	53.6	55.8	57.2	58.2	58.9	59.4	59.8	60.2	60.5	60.7	61.1	61.2	61.6	61.7	62.0	62.3	62.7	63.0	63.3	63.3	63.3
	.05	161	200	216	225	230	234	237	239	241	243	245	246	248	248	248	248	249	250	252	253	254	254	254
	.01	1614	2000	2167	2255	2303	2341	2371	2393	2411	2425	2437	2446	2453	2459	2463	2467	2469	2471	2473	2475	2476	2477	2477
2	.10	8.53	9.00	9.16	9.24	9.29	9.33	9.35	9.37	9.38	9.39	9.40	9.41	9.42	9.42	9.44	9.44	9.45	9.46	9.47	9.48	9.48	9.49	9.49
	.05	14.5	19.0	19.2	19.3	19.3	19.3	19.4	19.4	19.4	19.4	19.4	19.4	19.4	19.4	19.4	19.4	19.4	19.5	19.5	19.5	19.5	19.5	19.5
	.01	98.5	99.0	99.2	99.2	99.3	99.3	99.4	99.4	99.4	99.4	99.4	99.4	99.4	99.4	99.4	99.4	99.4	99.5	99.5	99.5	99.5	99.5	99.5
3	.10	5.94	5.46	5.39	5.34	5.31	5.28	5.27	5.25	5.24	5.23	5.22	5.22	5.20	5.20	5.18	5.18	5.18	5.17	5.17	5.17	5.14	5.14	5.14
	.05	10.1	9.55	9.38	9.32	9.30	9.24	9.23	9.21	9.20	9.19	9.18	9.17	9.16	9.15	9.13	9.13	9.13	9.12	9.12	9.12	9.09	9.09	9.09
	.01	34.1	30.8	29.5	28.7	28.2	27.9	27.7	27.5	27.3	27.2	27.1	27.1	27.1	26.9	26.9	26.7	26.7	26.6	26.6	26.6	26.2	26.2	26.2
4	.10	4.54	4.32	4.19	4.11	4.05	4.01	3.98	3.95	3.94	3.93	3.91	3.90	3.88	3.87	3.84	3.84	3.83	3.82	3.82	3.80	3.79	3.76	3.7
	.05	7.71	6.94	6.59	6.39	6.26	6.16	6.09	6.04	6.00	5.96	5.94	5.91	5.87	5.86	5.81	5.80	5.77	5.75	5.70	5.66	5.64	5.6	5.6
	.01	21.2	18.0	16.7	16.0	15.5	15.2	15.0	14.8	14.7	14.5	14.4	14.4	14.2	14.2	14.0	14.0	13.9	13.8	13.7	13.6	13.5	13.5	13.5
5	.10	4.06	3.78	3.62	3.52	3.45	3.40	3.37	3.34	3.32	3.30	3.28	3.27	3.25	3.24	3.21	3.21	3.19	3.17	3.15	3.13	3.11	3.1	3.1
	.05	6.61	5.79	5.41	5.19	5.05	4.95	4.88	4.82	4.77	4.74	4.71	4.68	4.64	4.62	4.57	4.56	4.53	4.50	4.44	4.41	4.37	4.3	4.3
	.01	16.26	13.27	12.06	11.39	10.97	10.67	10.46	10.29	10.16	10.05	9.96	9.89	9.77	9.72	9.58	9.55	9.47	9.38	9.34	9.13	9.04	9.0	9.0

The degrees of freedom are ν_1 for the numerator and ν_2 for the denominator.

Table B-6 The F distribution ($\alpha = 0.10, 0.05, \text{ and } 0.01$)

		p_1 (numerator)																					
p_2	α	1	2	3	4	5	6	7	8	9	10	11	12	14	15	19	20	24	30	50	100	500	∞
6	.10	3.78	3.46	3.29	3.18	3.11	3.05	3.01	2.98	2.96	2.94	2.92	2.90	2.88	2.67	2.84	2.84	2.82	2.80	2.77	2.75	2.73	2.72
	.05	5.99	5.14	4.76	4.53	4.39	4.28	4.21	4.15	4.10	4.06	4.03	4.00	3.96	3.54	3.88	3.87	3.84	3.81	3.75	3.71	3.68	3.67
	.01	12.74	10.92	9.78	9.15	8.75	8.47	8.26	8.10	7.98	7.87	7.79	7.72	7.60	7.56	7.42	7.40	7.31	7.23	7.09	6.99	6.90	6.88
7	.10	3.59	3.26	3.07	2.96	2.88	2.83	2.78	2.75	2.72	2.70	2.68	2.67	2.64	2.63	2.60	2.59	2.58	2.56	2.52	2.50	2.48	2.47
	.05	5.59	4.74	4.35	4.12	3.97	3.87	3.79	3.73	3.68	3.64	3.60	3.57	3.53	3.51	3.46	3.44	3.41	3.38	3.32	3.27	3.24	3.23
	.01	12.25	9.53	8.45	7.83	7.46	7.19	6.99	6.84	6.72	6.62	6.54	6.47	6.36	6.31	6.18	6.16	6.07	5.99	5.86	5.75	5.67	5.65
8	.10	3.46	3.11	2.92	2.81	2.73	2.67	2.62	2.59	2.56	2.54	2.52	2.50	2.47	2.46	2.43	2.42	2.40	2.38	2.35	2.32	2.30	2.29
	.05	5.32	4.46	4.07	3.84	3.69	3.58	3.50	3.44	3.39	3.35	3.31	3.28	3.24	3.22	3.16	3.15	3.12	3.08	3.02	2.97	2.94	2.93
	.01	11.26	8.65	7.59	7.01	6.63	6.37	6.18	6.03	5.91	5.81	5.73	5.67	5.56	5.52	5.38	5.36	5.28	5.20	5.07	4.96	4.88	4.86
9	.10	3.36	3.01	2.81	2.69	2.61	2.55	2.51	2.47	2.44	2.42	2.40	2.38	2.35	2.34	2.31	2.30	2.28	2.25	2.22	2.19	2.17	2.16
	.05	5.12	4.26	3.86	3.63	3.48	3.37	3.29	3.23	3.18	3.14	3.10	3.07	3.03	3.01	2.95	2.94	2.90	2.86	2.80	2.76	2.72	2.71
	.01	10.56	8.02	6.99	6.42	6.06	5.80	5.61	5.47	5.35	5.26	5.18	5.11	5.00	4.96	4.83	4.81	4.73	4.65	4.52	4.42	4.33	4.31
10	.10	3.28	2.92	2.73	2.61	2.52	2.46	2.41	2.38	2.35	2.32	2.30	2.28	2.25	2.24	2.21	2.20	2.18	2.16	2.12	2.09	2.06	2.06
	.05	4.96	4.10	3.71	3.48	3.33	3.22	3.14	3.07	3.02	2.98	2.94	2.91	2.86	2.85	2.78	2.77	2.74	2.70	2.64	2.59	2.55	2.54
	.01	10.04	7.56	6.55	5.99	5.64	5.39	5.20	5.06	4.94	4.83	4.77	4.71	4.60	4.56	4.43	4.41	4.33	4.25	4.12	4.01	3.93	3.91
11	.10	3.23	2.86	2.66	2.54	2.45	2.39	2.34	2.30	2.27	2.25	2.23	2.21	2.18	2.17	2.15	2.12	2.10	2.08	2.04	2.00	1.98	1.97
	.05	4.84	3.98	3.59	3.36	3.20	3.09	3.01	2.95	2.90	2.85	2.82	2.79	2.74	2.72	2.66	2.65	2.61	2.57	2.51	2.46	2.42	2.40
	.01	9.65	7.21	6.22	5.67	5.32	5.07	4.89	4.74	4.63	4.54	4.46	4.40	4.29	4.25	4.12	4.10	4.02	3.94	3.81	3.71	3.62	3.60
12	.10	3.18	2.81	2.61	2.48	2.39	2.33	2.28	2.24	2.21	2.19	2.17	2.15	2.11	2.10	2.07	2.06	2.04	2.01	1.97	1.94	1.91	1.90
	.05	4.75	3.89	3.49	3.26	3.11	3.00	2.91	2.85	2.80	2.75	2.72	2.69	2.64	2.62	2.56	2.54	2.51	2.47	2.40	2.35	2.31	2.30
	.01	9.33	6.93	5.95	5.41	5.06	4.82	4.64	4.50	4.39	4.30	4.22	4.16	4.05	4.01	3.88	3.86	3.78	3.70	3.57	3.47	3.38	3.34
14	.10	3.10	2.73	2.52	2.39	2.31	2.24	2.19	2.15	2.12	2.10	2.08	2.05	2.02	2.01	1.97	1.96	1.94	1.91	1.87	1.83	1.80	1.80
	.05	4.60	3.74	3.34	3.11	2.96	2.85	2.76	2.70	2.65	2.60	2.57	2.53	2.48	2.46	2.40	2.39	2.35	2.31	2.24	2.19	2.14	2.11
	.01	8.86	6.51	5.56	5.04	4.69	4.46	4.28	4.14	4.03	3.94	3.86	3.80	3.70	3.66	3.53	3.51	3.43	3.35	3.22	3.11	3.03	3.00
15	.10	3.07	2.70	2.49	2.36	2.27	2.21	2.16	2.12	2.09	2.06	2.04	2.02	1.98	1.97	1.93	1.92	1.90	1.87	1.83	1.79	1.76	1.7
	.05	4.54	3.68	3.29	3.06	2.90	2.79	2.71	2.64	2.59	2.54	2.51	2.46	2.42	2.40	2.34	2.33	2.29	2.25	2.18	2.12	2.08	2.0
	.01	8.68	6.36	5.42	4.89	4.56	4.32	4.14	4.00	3.89	3.80	3.73	3.67	3.56	3.52	3.40	3.37	3.29	3.21	3.08	2.98	2.89	2.8
16	.10	3.05	2.67	2.46	2.33	2.24	2.18	2.13	2.09	2.06	2.03	2.01	1.99	1.95	1.94	1.90	1.89	1.87	1.84	1.79	1.76	1.73	1.7
	.05	4.49	3.63	3.24	3.01	2.85	2.74	2.66	2.59	2.54	2.49	2.46	2.42	2.37	2.35	2.29	2.28	2.24	2.19	2.12	2.07	2.02	2.0
	.01	8.41	6.21	5.29	4.77	4.44	4.20	4.03	3.89	3.78	3.69	3.62	3.55	3.45	3.41	3.28	3.26	3.18	3.10	2.97	2.86	2.78	2.7

Table B-6 The F distribution ($\alpha = 0.10, 0.05, \text{ and } 0.01$)

		F_1 (numerator)																											
F_2	α	1	2	3	4	5	6	7	8	9	10	11	12	14	15	19	20	24	30	50	100	500	∞						
18	.10	3.01	2.62	2.42	2.29	2.20	2.15	2.08	2.04	2.00	1.98	1.96	1.95	1.90	1.89	1.85	1.84	1.81	1.78	1.74	1.70	1.67	1.66						
	.05	4.41	3.35	3.16	2.93	2.77	2.66	2.58	2.51	2.46	2.41	2.37	2.34	2.29	2.27	2.20	2.19	2.15	2.11	2.04	1.99	1.93	1.92						
	.01	8.29	6.01	5.09	4.38	4.25	4.01	3.84	3.71	3.60	3.51	3.43	3.37	3.27	3.23	3.10	3.08	3.00	2.92	2.78	2.68	2.59	2.57						
19	.10	2.99	2.61	2.40	2.27	2.18	2.11	2.06	2.02	1.98	1.96	1.94	1.91	1.87	1.84	1.82	1.81	1.79	1.76	1.71	1.67	1.64	1.63						
	.05	4.38	3.32	3.13	2.90	2.74	2.63	2.54	2.48	2.42	2.38	2.34	2.31	2.26	2.23	2.17	2.16	2.11	2.07	2.00	1.94	1.89	1.88						
	.01	8.18	5.93	5.01	4.30	4.17	3.94	3.77	3.63	3.52	3.43	3.36	3.30	3.19	3.15	3.03	3.00	2.92	2.84	2.71	2.60	2.51	2.49						
20	.10	2.97	2.59	2.38	2.25	2.16	2.09	2.04	2.00	1.96	1.94	1.92	1.89	1.85	1.84	1.80	1.79	1.77	1.74	1.69	1.65	1.62	1.61						
	.05	4.35	3.29	3.10	2.87	2.71	2.60	2.51	2.45	2.39	2.35	2.31	2.21	2.22	2.20	2.14	2.12	2.08	2.04	1.97	1.91	1.86	1.84						
	.01	8.10	5.85	4.94	4.23	4.10	3.87	3.70	3.56	3.46	3.37	3.29	3.23	3.13	3.09	2.96	2.94	2.86	2.78	2.64	2.54	2.44	2.42						
24	.10	2.93	2.54	2.33	2.19	2.10	2.04	1.98	1.94	1.91	1.88	1.85	1.83	1.79	1.78	1.74	1.73	1.70	1.67	1.62	1.58	1.54	1.53						
	.05	4.26	3.20	3.01	2.78	2.62	2.51	2.42	2.36	2.30	2.25	2.21	2.18	2.13	2.11	2.04	2.03	1.98	1.94	1.86	1.80	1.75	1.73						
	.01	7.92	5.67	4.72	4.22	3.90	3.73	3.50	3.36	3.26	3.17	3.09	3.03	2.93	2.89	2.76	2.74	2.66	2.58	2.44	2.33	2.24	2.21						
30	.10	2.88	2.49	2.28	2.14	2.05	1.98	1.93	1.89	1.85	1.82	1.79	1.77	1.73	1.72	1.68	1.67	1.64	1.61	1.55	1.51	1.47	1.46						
	.05	4.17	3.12	2.92	2.69	2.53	2.42	2.33	2.27	2.21	2.16	2.13	2.09	2.04	2.01	1.95	1.93	1.89	1.84	1.76	1.70	1.64	1.62						
	.01	7.56	5.39	4.51	4.02	3.70	3.47	3.30	3.17	3.07	2.91	2.91	2.84	2.74	2.70	2.57	2.55	2.47	2.39	2.25	2.13	2.03	2.01						
50	.10	2.81	2.41	2.20	2.06	1.97	1.90	1.84	1.80	1.76	1.73	1.70	1.68	1.64	1.63	1.58	1.57	1.54	1.50	1.44	1.39	1.34	1.33						
	.05	4.03	3.18	2.79	2.56	2.40	2.29	2.20	2.13	2.07	2.03	1.99	1.95	1.89	1.87	1.80	1.78	1.74	1.69	1.60	1.52	1.46	1.44						
	.01	7.17	5.06	4.20	3.72	3.41	3.19	3.02	2.89	2.79	2.70	2.63	2.56	2.46	2.42	2.29	2.27	2.18	2.10	1.95	1.82	1.71	1.61						
100	.10	2.76	2.36	2.14	2.00	1.91	1.85	1.78	1.73	1.70	1.66	1.63	1.61	1.57	1.56	1.50	1.49	1.46	1.42	1.35	1.29	1.23	1.2						
	.05	3.94	3.09	2.70	2.46	2.31	2.19	2.10	2.03	1.97	1.93	1.89	1.85	1.79	1.77	1.69	1.68	1.63	1.57	1.48	1.39	1.31	1.2						
	.01	6.90	4.82	3.98	3.51	3.21	2.99	2.82	2.69	2.59	2.50	2.43	2.37	2.26	2.22	2.09	2.07	1.98	1.89	1.73	1.60	1.47	1.4						
500	.10	2.72	2.31	2.10	1.96	1.86	1.79	1.73	1.68	1.64	1.61	1.58	1.56	1.52	1.50	1.45	1.44	1.41	1.36	1.28	1.21	1.12	1.0						
	.05	3.86	3.01	2.62	2.39	2.23	2.12	2.03	1.96	1.90	1.85	1.81	1.77	1.71	1.69	1.61	1.59	1.54	1.48	1.38	1.28	1.16	1.1						
	.01	6.89	4.83	3.82	3.36	3.05	2.84	2.68	2.55	2.44	2.36	2.28	2.22	2.12	2.07	1.94	1.92	1.83	1.74	1.56	1.41	1.23	1.1						
∞	.10	2.71	2.30	2.08	1.94	1.85	1.77	1.72	1.67	1.63	1.60	1.57	1.55	1.51	1.49	1.43	1.42	1.38	1.34	1.26	1.18	1.08	1.0						
	.05	3.84	3.00	2.60	2.37	2.21	2.10	2.01	1.94	1.88	1.83	1.79	1.75	1.69	1.67	1.59	1.57	1.52	1.46	1.35	1.24	1.11	1.0						
	.01	6.83	4.61	3.78	3.32	3.02	2.80	2.64	2.51	2.41	2.32	2.25	2.18	2.08	2.04	1.90	1.88	1.79	1.70	1.52	1.36	1.15	1.0						