

PROCEEDINGS

Printed Version
ISBN: 979-15263-0-3

ISBN 979152630-3



IJJSS 2006

The 2nd Indonesia Japan Joint Scientific Symposium 2006
September 6 – 8, 2006
Center of Japanese Studies,
University of Indonesia, Indonesia

Organized by :



University of Indonesia, Indonesia
Chiba University, Japan

Panasonic
ideas for life

*Mainly Sponsored by
PT. Gobel International*

Supported by:



Lembaga Teknologi – FTUI

Program/Contents

Day 1, 6 September 2006

Opening Ceremony

Speech by General Chairman of IJSS 2006

Speech by Rector UI

Speech by Minister of Research and Technology, Indonesia

Speech by Prof. Hiroshi Amano, Vice President Chiba University, Japan

Speech by Prof. Dr. Bagio Budiardjo, University of Indonesia

TECHNICAL PROGRAM

13.00 - 14.45 : Image and Signal Processing , location Room 1

Moderator: Prof. Dadang Gunawan (University of Indonesia, Indonesia)

- IJSS06-201 Rokhmatullah, et al., "Global percent tree cover mapping using regression tree method: an advantageous of quick bird images as training data", Chiba University, Japan
- IJSS06-202 Marzuki, Multiple peaks character of raindrop size distribution from two dimensional video disdrometer, Andalas University, Indonesia
- IJSS06-203 Hamid, EY., "Performance of wavelet as pulse shaping filter in Gaussian channel", ITB, Indonesia
- IJSS06-204 Rio Harlan, et al., "Analysis of Real Time Audio Effect Design Using TMS320 C6713 DSK", Electrical Engineering Department, University of Indonesia, Indonesia

13.00 - 14.45 : Antenna and Microwave, location Room 2

Moderator: Dr. Jospahat Tetuko (Chiba University, Japan)

- IJSS06-205 Fitri Yuli Zulkifli, et al., "Trimmed equilateral triangular microstrip patch antenna for wireless LAN application", Electrical Engineering Department, University of Indonesia, Indonesia
- IJSS06-206 Basari, et al., "Circularly polarized triangular microstrip array antenna using single fed proximity coupled for mobile satellite communications applications", Chiba University, Japan
- IJSS06-207 Muhamad Fauzan Edy P., et al., "Circularly polarized equilateral triangular antenna for mobile satellite communications", Chiba University, Japan
- IJSS06-208 Rahardjo, ET., et al., "A modified direct feed Y shaped slot circularly polarized equilateral triangular microstrip antenna with a single stub tuner for quazy zenith application", Electrical Engineering Department, University of Indonesia, Indonesia

- IJJSS06-234 Muis, A., et al., "Bilateral Control with Transformer and Gyator Analogy", Electrical Engineering Department, University of Indonesia, Indonesia
- IJJSS06-235 Subiantoro, A., et al., "Design and Implementation of adaptive control system on pressure process RIG (feedback 38-714) using recursive least square and generalized predictive control method", Electrical Engineering Department, University of Indonesia, Indonesia
- IJJSS06-236 Ferdinando, F., et al., "The implementation of PID controller in the pick and place robot", Petra University, Surabaya, Indonesia

08.30 - 10.00 : Energy and Power System, location Room 3

Moderator : Dr. Uno Bintang Sudiby. (University of Indonesia, Indonesia)

- IJJSS06-237 Iwa Garniwa, et al., "Analysis of connection temperature due current affected by surface factors and torque", Electrical Engineering Department, University of Indonesia, Indonesia
- IJJSS06-238 Iwa Garniwa, et al., "Heat transfer analysis for coil inside the transformer oil", Electrical Engineering Department, University of Indonesia, Indonesia
- IJJSS06-239 Iwa Garniwa, et al., "Effect of pollutan type and concentration on harmonic characteristic of leakage current on reson epoxy insulator", Electrical Engineering Department, University of Indonesia, Indonesia
- IJJSS06-240 Herawati Yusuf, "Band gap on switching power supply 75 V DC/400 mA from 15 V DC with low ripple", Electrical engineering Department, University of Indonesia, Indonesia
- IJJSS06-241 Agus R. Utomo, et al., "Studies on Fuel Cell tech. to produce electivity using supercritical water gasification of biomass empty fruit bunch palm oil as hydrogen production", Electrical Engineering Department, University of Indonesia, Indonesia

10.15 - 12.00 : Environment Science, location Room 1

Moderator: Dr. Josaphat Tetuko (Chiba University, Japan)

- IJJSS06-242 Josaphat Tetuko, et al., "Retrieving of Geological Characteristics of Krakatau Volcanoes Complex Using synthetic aperture radar", Chiba University, Japan
- IJJSS06-243 A. Hemmati, et al., "3-D nonlinear analysis for seismic assessment of vertical.y mixed structures", Semnati University, Iran
- IJJSS06-244 Yessy Arvelyna, et al., "Wavelet transform analysis for oceanic feature detection in SAR and opical image", Tokyo Univ., of Marrine, Japan
- IJJSS06-245 Kusuma Dewi, "Pedestrian detection using discrete wavelet transform optimized by genetic algorithms", Chiba University, Japan
- IJJSS06-246 Sulaiman A., et al., "On nonlinear internal waves propagation in the narrow strait of the Indonesian seas", BPPT, Indonesia

BANDGAP ON SWITCHING POWER SUPPLY 75 V DC / 400 mA FROM 15 V DC WITH LOW RIPPLE VOLTAGE.

Herawati Ys¹. Student Member, IEEE. Eko Cipto². Member IEEE. Iwa Garniwa³.

Department of Electrical Engineering, University of Indonesia.

Siti_herawati_aminah@yahoo.com, eko@ee.ui.ac.id². iwa@ee.ui.ac.id³

ABSTRACT – the fact, electric or electronic systems can't be operated directly with electric source. Because it's needed a converter to convert electric source from one voltage form and level to another voltage form and level, as the boost converter or step up converter. Boost converter or step-up converter has an output voltage that is always greater than the input voltage. Output voltage can be differentiated depend on the duty cycle. It's needed a pulse width modulation (PWM) generator. In design, the output voltage of boost converter has voltage about 5 times than the input voltage. Because of that, the duty cycle is 0.8. The output voltage of boost converter is about 74 V DC with error percentage 0.8 % and the output current of boost converter is 396 mA with error percentage 0.8 % with ripple 6.504 mVp-p obtained is efficiency 98 %.

Keywords — Bandgap, switching, Converter power supply, low ripple.

I. INTRODUCTION

The power supply is a system which could feed the load with efficient and softy cited. The part off power supply is the simple boost converter circuit, the simple converter with filter from core of toroid with two bandgaps as filter CLC. It be calculate with approach magnetic circuit to circuit electric. Bandgap can change the system.

Switching boost converter [3], the out put voltage 75V/400mA DC. Vin 15 VDC with ripple maximum 0.2Vp-p **Switching on Boost converter**

Switching on Boost converter [is IGBT]. The IGBT have duty cycle which one to operate the power supply so the voltage output have low ripple. See fig. 1

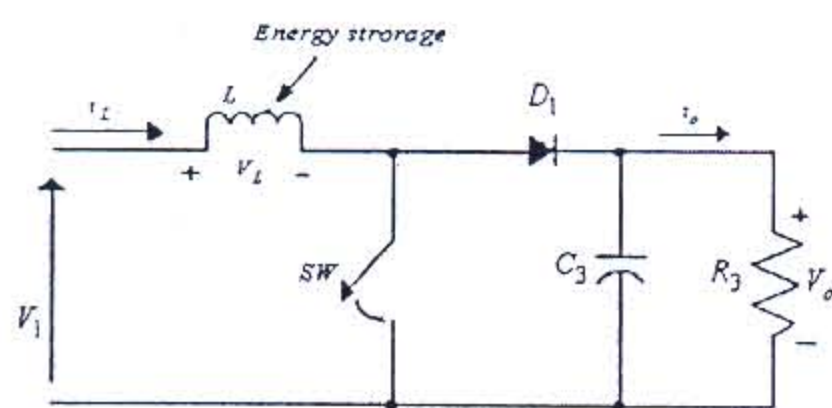


Fig.1 The simple boost converter circuit

Fig. 1. the simple boost converter circuit it takes the duty cycle, the duty cycle reduce the out put voltage. The duty cycle make the IGBT on and off as eq. 1.

$$V_d t_{on} + (V_d - V_o) t_{off} = 0 \quad (1)$$

The effect of on and off switching on converter like eq 2.

$$\frac{V_o}{V_d} = \frac{T_s}{t_{off}} = \frac{1}{1-D} \quad (2)$$

From eq. 2. The characteristic of duty cycle see fig. 2 :

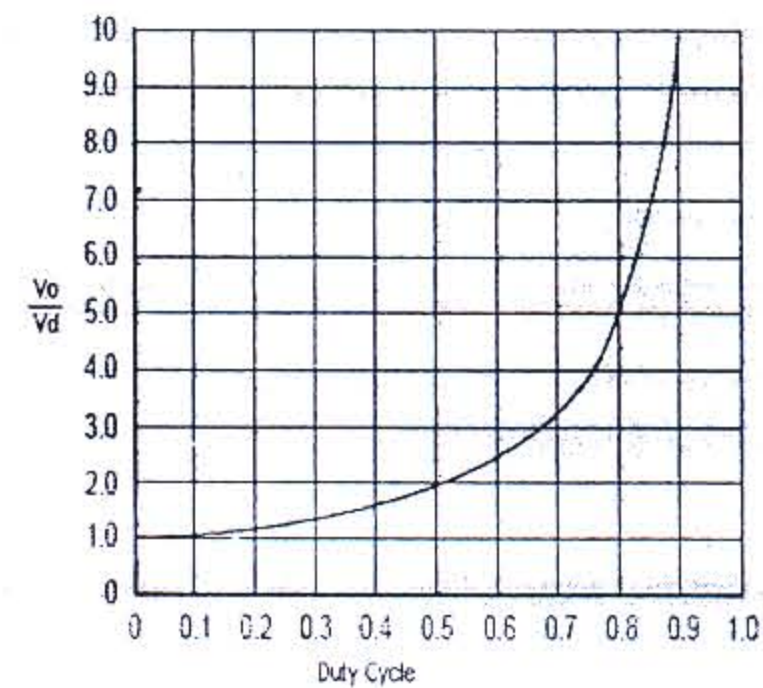


Fig 2. Characteristic curve

The figure 2. To show the ratio of voltage with duty cycle the maximize duty cycle is 1.

II. THE CURRENT DISCONTINUE WITH V_D CONSTANT

Switching on or off with discontinue to show the integrated voltage see figure 3.

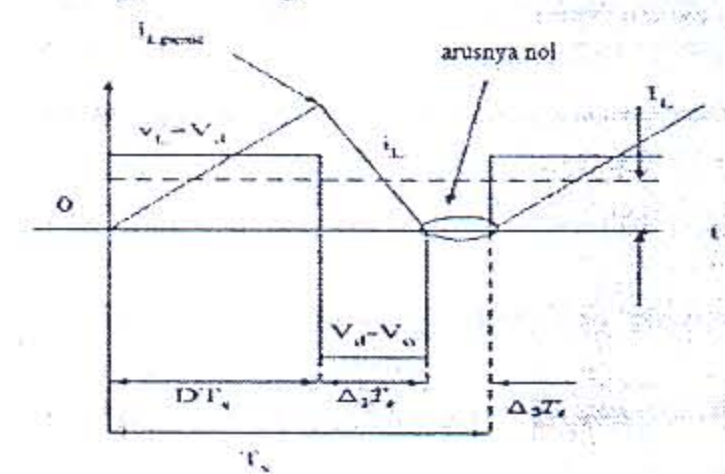


Fig.3.Discontinu current

The integrated over voltage with more than one controller must be come zero. This to show the steady state. **Steady state.** The eq. 3:

$$V_d DT_s + (V_d - V_o) \Delta_1 T_s = 0 \quad (3)$$

From fig 3. The duty cycle is

$$\therefore \frac{V_o}{V_d} = \frac{\Delta_1 + D}{\Delta_1} \quad (4)$$

With assumption there aren't power losses ($P_d = P_o$), so the ratio current discontinues is the eq. 5:

$$\frac{I_o}{I_d} = \frac{\Delta_1}{\Delta_1 + D} \quad (5)$$

From the fig. 5. The current is physical defect so the average current is deferent with duty cycle. The eq. 4. So the peak current is eq. 6:

$$i_{L,peak} = \frac{V_d D T_s}{L} \quad (6)$$

And the average input current in eq. 7:

$$I_d = \frac{V_d D T_s}{2L} (D + \Delta_1) \quad (7)$$

Use the equation 7 and 5 so the average current in eq 8.

$$I_o = \left(\frac{T_s V_d}{2L} \right) D \Delta_1 \quad (8)$$

The component the simple boost converter. [6] circuit in the tabel 1.

TABLE 1
List of the simple boost Converter.

Components	Component parameter
L	2,307 mH
R ₃	187,5 Ω
C ₃	4 uF
MOSFET	IRF150
D ₁	DIN4002

The complete converter is shown in fig. 4

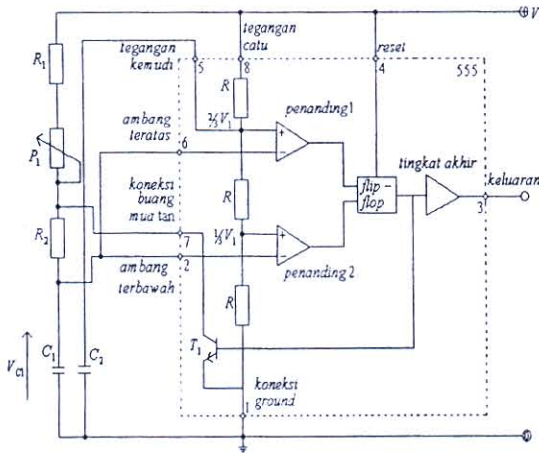


Fig. 4. the boost converter. [4]

III. BANDGAP AS FILTER CLC

The Filter CLC like fig. 5. From the core type with two bandgaps material.

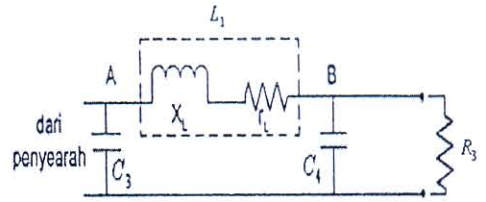


Fig.5. circuit filter CLC

If the voltage is:

$$V'_{dc} = \frac{R_3}{R_3 + r_L} \cdot V_{dc} \quad (9)$$

The voltage average is:

$$V'_{r,rms} = 0,2 / 2\sqrt{3} \quad (10)$$

So the ripple is:

$$r' = \frac{V'_{r,rms}}{V'_{dc}} \times 100\% \quad (11)$$

$$r' = \frac{0,0577}{15} \times 100\%$$

$$r' = 0,38\%$$

Chose $L_1 = 250$ mH and $C_3 = 4 \mu F$, this parameter it takes from core type band gap as fig. 6. :

IV. BANDGAP IN THE TOROID CORE

Bandgap in fig 5. As capacitor and the inductor it takes from winding, material and also two bandgap fig. 4.

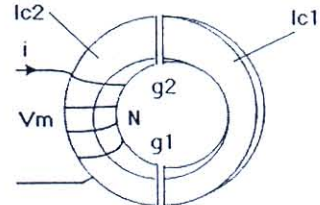


Fig. 6. Two band gap in the toroid core

The coupling electromagnetic is

$$k_1 = a \sqrt{\omega \mu_0 \pi / 2 \rho} \quad (12)$$

The coupling equation 12, used in equation 14 to find self inductance eq. 14 or mutual inductance equation 15 the resistant material magnet permanent, in primer

$$R_{D1} = \rho l_1 / (\pi a^2) \quad (13)$$

Self inductance L_1 is

$$L_1 = L_i + (\mu_0 / 2\pi) l_1 (\log [2 l_1 / a] - 1) \quad (14)$$

The mutual inductance is eq. 15

$$M = (\mu_0 / 2\pi) l_2 e \{ \log [2 l_1 e / (a + b)] - 1 \} \quad (15)$$

Calculate the reluctance from the material and band gap as eq. 16 :

$$\mathcal{R}_g = \frac{g}{\mu A g} \quad (16)$$

Count self inductance like esq. 14, mutual inductance eq 15, reluctans, from the band gap and the material so it found the accumulation magnetomotans as winding eq 17.

$$N^2 = \frac{2\pi\rho\alpha L}{\mu\alpha c} \quad (17)$$

Current and magnetic Fluxs was generate from fig. 5 has difference so it makes more strongly or weakness so the parameter ΔB like eq. 18.

$$\Delta B = \frac{(V_1 - V_Q - V_O)(V_O + V_D)T_s}{AN(V_1 - V_Q + V_D)} \quad (18)$$

So fluxs density maximum B_B from eq. 19.

$$B_B = B_R + \frac{\mu_r \mu_0 N P_O}{IV_O} + \frac{\Delta B}{2} \quad (19)$$

Fluxes density residual is eq.20

$$B_R = B_B - \frac{\mu_r \mu_0 N P_O}{IV_O} - \frac{\Delta B}{2} \quad (20)$$

Fluxes density minimum eq. 21

$$B_A = B_R + \frac{\mu_r \mu_0 N P_O}{IV_O} - \frac{\Delta B}{2} \quad (21)$$

The reactants current) rms is eq .22

$$I_{x,rms} = \frac{P_O}{V_O} \sqrt{1 + \frac{1}{12} \left[\frac{IV_O(V_1 - V_Q - V_O)(V_O + V_D)T_s}{\mu_r \mu_0 AN^2 P_O (V_1 - V_Q + V_D)} \right]^2} \quad (22)$$

The peak reactance current in eq. 23.

$$I_{XB} = \frac{I(B_B - B_R)}{\mu_r \mu_0 N} \quad (23)$$

The reactance current minimum in eq. 24

$$I_{XA} = \frac{I(B_A - B_R)}{\mu_r \mu_0 N} \quad (24)$$

The integration toroid core was converting in boost converter in table II.

TABLE II

Assess permeans of nucleus toroid of 1 by 2 bandgaps

g (mm)	l _c (cm)	A _c = A _g (cm ²)	$\mathcal{R}_{c1} = \mathcal{R}_{c2}$ (AT/Wb) 10 ⁶	$\varphi_{c1} = \varphi_{c2}$ (H) 10 ⁶	$\mathcal{R}_{g1} = \mathcal{R}_{g2}$ (AT/Wb) 10 ⁶	$\varphi_{g1} = \varphi_{g2}$ (H) 10 ⁻⁹
0.2	4.68	0.07	5.325	188	22	45.5
0.4	4.66	0.07	5.3	188.6	45	22
0.6	4.64	0.07	5.28	189.4	68	14.7
0.8	4.62	0.07	5.25	190.6	91	11
1	4.6	0.07	5.23	191.2	113	8.8
1.2	4.58	0.07	5.2	192.3	136	7.3
1.4	4.56	0.07	5.19	192.6	159	6.3
1.6	4.54	0.07	5.16	193.7	181	5.5

IV. ANALYSIS THE PROTOTYPE

The output power supply with initial condition like fig 6. we find the average voltage on switching power supply 74 V DC. We can see the ripple more than 3% . after using 6 core with bandgap see figure 7. the ripple out put voltage about 73 Volt with a time stabled about 25 ns have, with Vin/Vout have the duty cycle a bout 0.8 in.

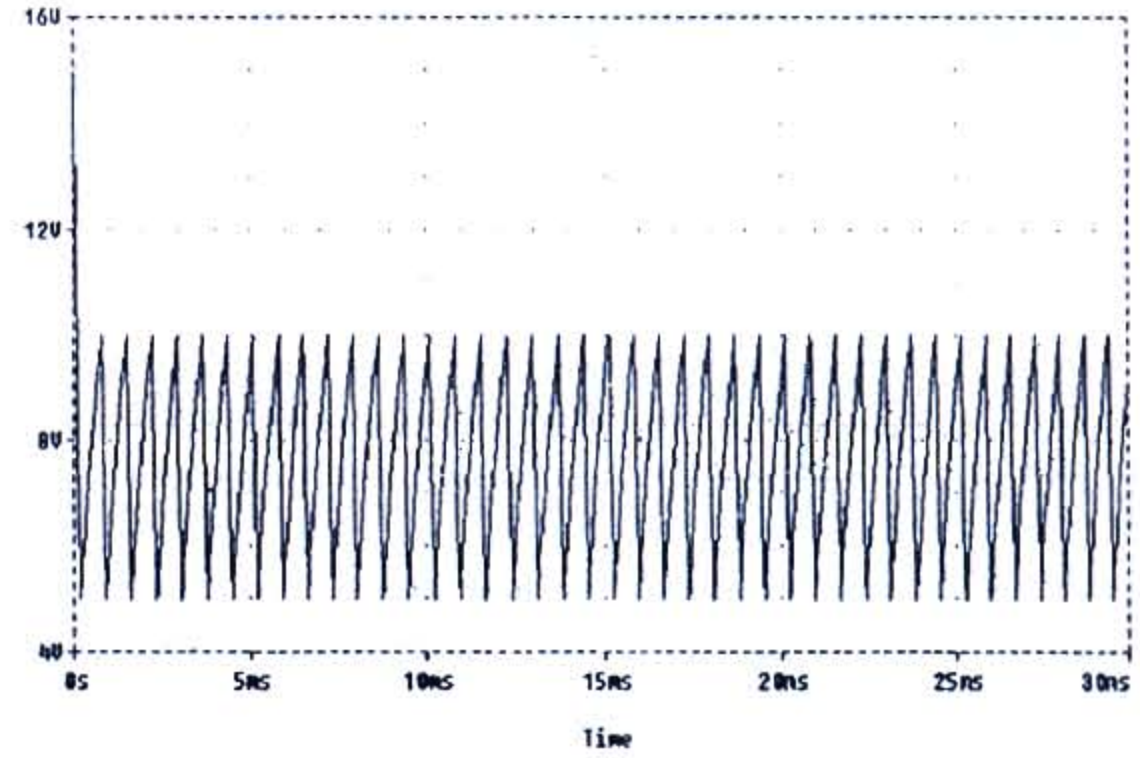


Fig 6. Voltage output power supply in initial condition.

The output power supply with bandgap as fig .7.

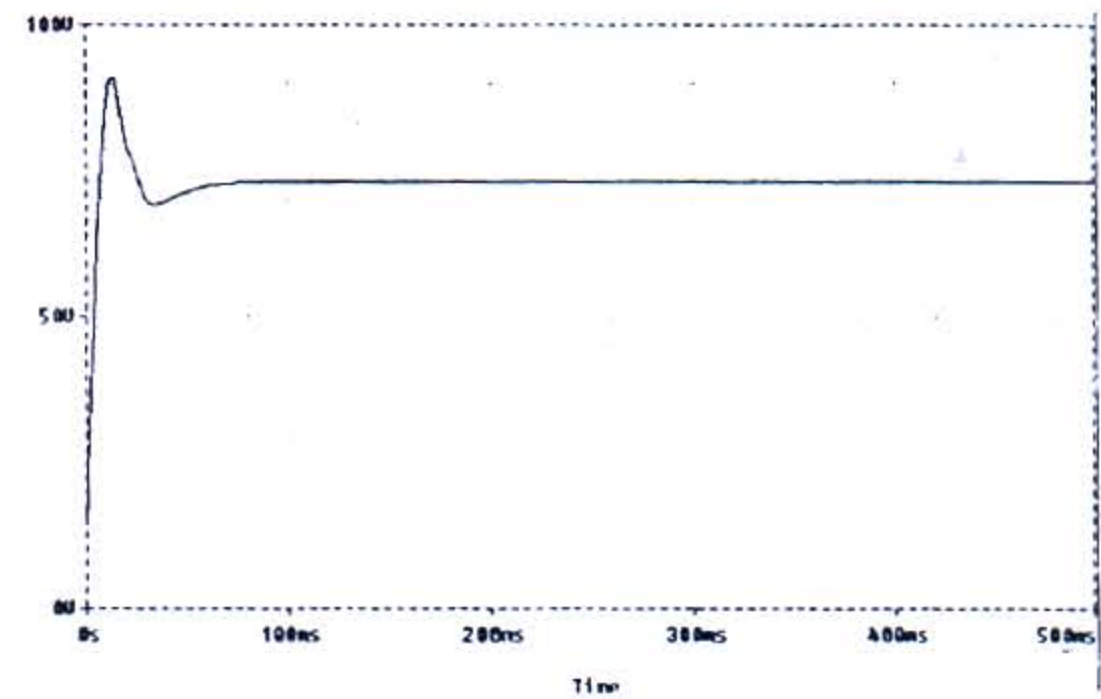


Fig. 7. Output voltage power supply with bandgap

V. CONCLUSION

- Boost converter is an important system its makes the power supply more efficient. With Duty Cycle $D = 0.8$.
- The ripple voltage 0.2 % with modifies core type from converter so the output voltage is 73 V DC with ripple 7mVp-p.
- The ripple 0.2 % and output current is 389 mA and efficiency 94 %.

REFERENCES

- [1.] Betz, R.E, "ELEC3230 Notes-Switching Electronics", University of Newcastle, Australia, 2002.
- [2.] Boylestad, Robert L., and Nashelsky, Louis. "Electronic Devices and Circuit Theory 7th Edition",

- Prentice-Hall, Inc., New Jersey, 1999. Gordo R. Slemon, "Magnetolectric Devices" John Wiley and Sons, Inc, Newyork, 1966.
- [3.] Gordo R. Slemon, "*Magneto electric Devices*" John Wiley and Sons, Inc, New York, 1966.
- [4.] Chryssis, George, "*High-frequency switching power supplies theory & design*", McGraw-Hill International Editions, 1989.
- [5.] Mohan, M., T. M. Undeland, and W. P. Robbins, "*Power Electronics: Converters, Applications and Design*", John Wiley & Sons, Inc., New York, 1989.
- [6.] Pressman, Abraham, "*Switching Power Supply Design*", Swicthtronic Power Inc, Massachussets, 1992.
- [7.] Rashid, M. H., "*Spice for Power Electronics and Electric Power*", Prentice-Hall, Inc., Englewood Cliffs, New Jersey, 1993.