

## LISTING PROGRAM PADA MICROSOFT VISUAL BASIC 6.0

### 1. Program untuk Pembuatan Basis Data

```
Private Sub Command1_Click()  
Picture1.AutoRedraw = True  
n = 0  
X = Picture1.ScaleWidth  
Y = Picture1.ScaleHeight  
For brs = 1 To Y  
For klm = 1 To X  
    wrn = Picture1.Point(klm, brs)  
    k = wrn And RGB(255, 0, 0)  
    l = Int((wrn And RGB(0, 255, 0)) / 256)  
    m = Int(Int((wrn And RGB(0, 0, 255)) / 256) / 256)  
  
    If k = 255 And l = 255 And m = 255 Then  
        k = 255  
        l = 255  
        m = 255  
        n = n + 1  
    Else  
        k = 0  
        l = 0  
        m = 0  
    End If  
  
    Picture1.PSet (klm, brs), RGB(k, l, m)  
Next klm  
Next brs  
Text2.Text = n  
  
End Sub  
  
Private Sub command2_Click()  
Picture1.AutoRedraw = True  
n = 0  
X = Picture1.ScaleWidth  
Y = Picture1.ScaleHeight  
For brs = 1 To Y  
For klm = 1 To X  
    wrn = Picture1.Point(klm, brs)
```

```

k = wrn And RGB(255, 0, 0)
l = Int((wrn And RGB(0, 255, 0)) / 256)
m = Int(Int((wrn And RGB(0, 0, 255)) / 256) / 256)
Y = 0.257 * k + 0.504 * l + 0.098 * m + 16
cb = 0.148 * k - 0.291 * l + 0.439 * m + 128
cr = 0.439 * k - 0.368 * l - 0.071 * m + 128
If Y > 53.697 And Y < 234.261 And cb > 131.428 And cb < 203.42 And cr >
126.095 And cr < 183.67 Then
k = 255
l = 255
m = 255
n = n + 1

Else
k = 0
l = 0
m = 0
End If

```

```

Picture1.PSet (klm, brs), RGB(k, l, m)
Next klm
Next brs
Text2.Text = n
End Sub

```

```

Private Sub Command3_Click()
Picture1.AutoRedraw = False
Open "testfile2.txt" For Input As #1
n = 0
X = Picture1.ScaleWidth
Y = Picture1.ScaleHeight
For brs = 1 To Y
For klm = 1 To X
wrn = Picture1.Point(klm, brs)
k = wrn And RGB(255, 0, 0)
l = Int((wrn And RGB(0, 255, 0)) / 256)
m = Int(Int((wrn And RGB(0, 0, 255)) / 256) / 256)

```

```

Y = 0.257 * k + 0.504 * l + 0.098 * m + 16
cb = 0.148 * k - 0.291 * l + 0.439 * m + 128
cr = 0.439 * k - 0.368 * l - 0.071 * m + 128

```

```

Do
Input #1, a, B, c, d, e, f

If (Y >= Val(B) And Y <= Val(a)) And (cb >= Val(d) And cb <= Val(c)) _
And (cr >= Val(f) And cr <= Val(e)) Then
wr = 255
wg = 255
wb = 255
n = n + 1

Exit Do
Else
wr = 0
wg = 0
wb = 0
End If
Loop Until EOF(1)
Picture1.PSet (klm, brs), RGB(wr, wg, wb)

' proses selanjutnya
Seek #1, 1
Next klm
Next brs
Close #1
Picture1.AutoRedraw = True
Text2.Text = n
Form1.Refresh
End Sub

Private Sub Command5_Click()
CommonDialog1.Filter = "(*.jpg)|*.jpg|(*.bmp)|*.bmp"
CommonDialog1.ShowOpen
Text1.Text = CommonDialog1.FileName
Picture1.Picture = LoadPicture(Text1.Text)
Image1.Picture = Picture1.Image
End Sub

Private Sub Dir1_Change()
File1.Path = Dir1.Path
End Sub

Private Sub Drive1_Change()

```

```
Dir1.Path = Drive1.Drive  
End Sub
```

```
Private Sub File1_Click()  
Text1.Text = Dir1.Path + "\" + File1.FileName  
Picture1.Picture = LoadPicture(Text1.Text)  
Image1.Picture = Picture1.Image  
End Sub
```

## 2. Program untuk Mendeteksi Warna Kulit

```
Private Sub Command1_Click()  
Picture1.AutoRedraw = True  
X = Picture1.ScaleWidth  
Y = Picture1.ScaleHeight  
maksy = 0  
Miny = 255  
makscb = 0  
mincb = 255  
makscr = 0  
Mincr = 255  
For brs = 1 To Y Step 15  
For klm = 1 To X Step 15  
wrn = Picture1.Point(klm, brs)  
k = wrn And RGB(255, 0, 0)  
l = Int((wrn And RGB(0, 255, 0)) / 256)  
m = Int(Int((wrn And RGB(0, 0, 255)) / 256) / 256)  
  
Y = 0.257 * k + 0.504 * l + 0.098 * m + 16  
cb = 0.148 * k - 0.291 * l + 0.439 * m + 128  
cr = 0.439 * k - 0.368 * l - 0.071 * m + 128  
  
If Y > maksy Then maksy = Y  
If Y < Miny Then Miny = Y  
If cb > makscb Then makscb = cb  
If cb < mincb Then mincb = cb  
If cr > makscr Then makscr = cr  
If cr < Mincr Then Mincr = cr  
Next klm  
Next brs  
Text2.Text = Miny  
Text5.Text = maksy  
Text3.Text = mincb
```

```
Text6.Text = makscb  
Text4.Text = Mincr  
Text7.Text = makscr  
End Sub
```

```
Private Sub Command2_Click()  
Open "testfile1.txt" For Append As #1  
Write #1, Text2.Text, Text5.Text, Text3.Text, Text6.Text, Text4.Text, Text7.Text  
Close #1  
End Sub
```

```
Private Sub Command3_Click()  
Open "testfile2.txt" For Append As #1  
Write #1, Text13.Text, Text10.Text, Text12.Text, Text9.Text, Text11.Text,  
Text8.Text  
Close #1  
End Sub
```

```
Private Sub Dir1_Change()  
File1.Path = Dir1.Path  
End Sub
```

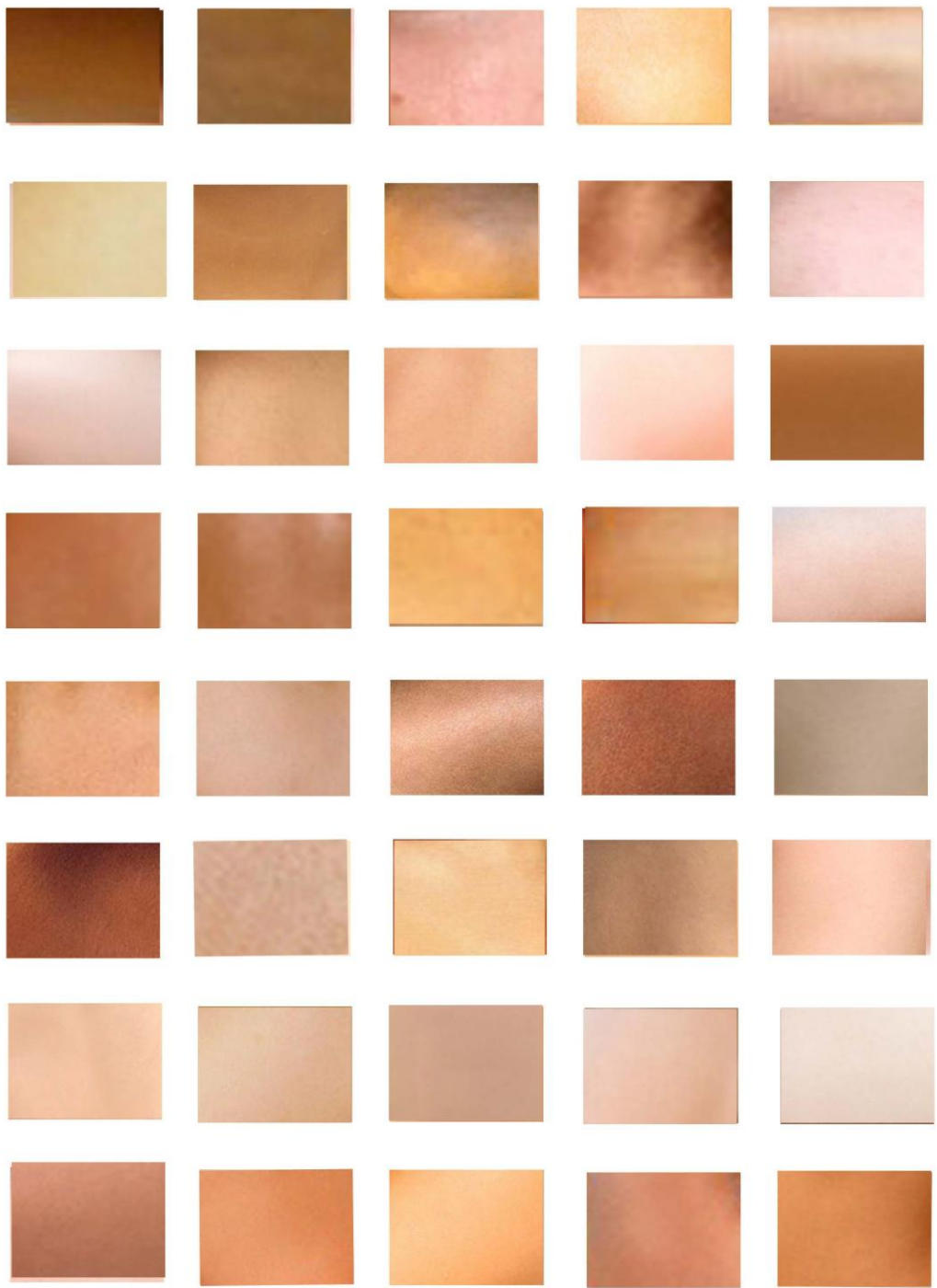
```
Private Sub Drive1_Change()  
Dir1.Path = Drive1.Drive  
End Sub
```

```
Private Sub File1_Click()  
Text1.Text = Dir1.Path + "\" + File1.FileName  
Picture1.Picture = LoadPicture(Text1.Text)  
End Sub
```

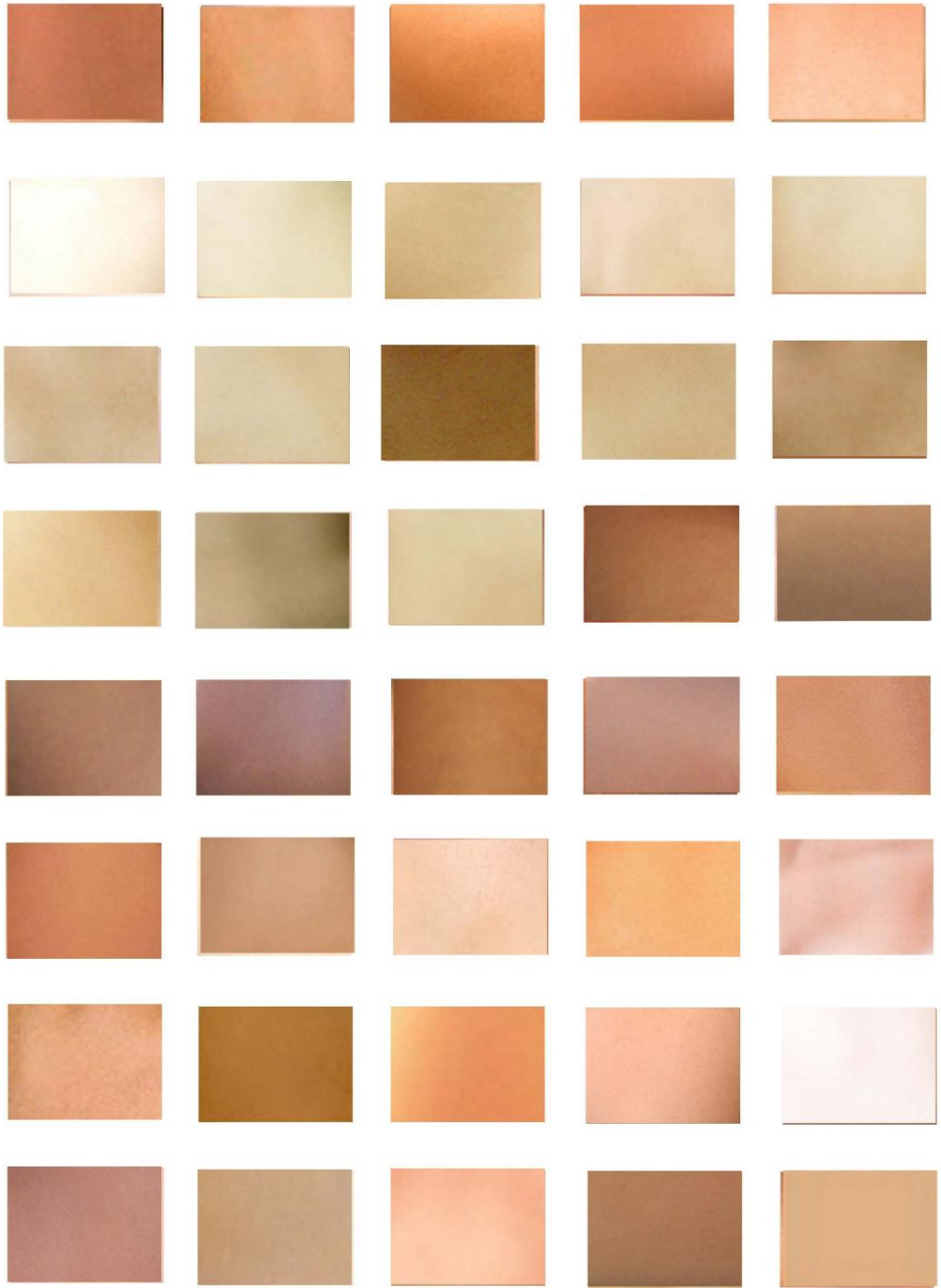
**SAMPEL GAMBAR WARNA KULIT**







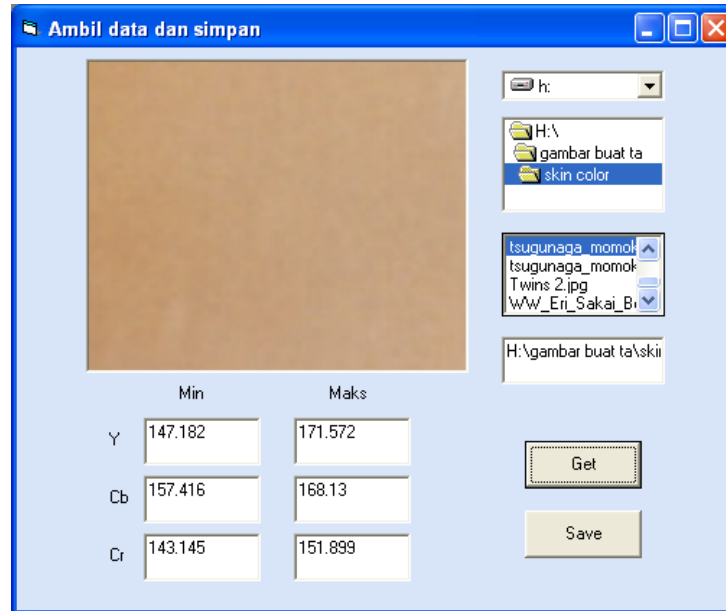












Contoh penggunaan program untuk membuat basis data

**Table Look Up**

| No. | Y maks  | Y min   | Cb maks | Cb min  | Cr maks | Cr min  |
|-----|---------|---------|---------|---------|---------|---------|
| 1   | 103.316 | 64.829  | 140.386 | 137.078 | 159.517 | 154.972 |
| 2   | 103.351 | 84.588  | 154.359 | 149.372 | 140.589 | 127.464 |
| 3   | 104.335 | 86.065  | 156.12  | 145.125 | 139.485 | 127.916 |
| 4   | 106.922 | 81.01   | 152.919 | 146.279 | 143.636 | 136.089 |
| 5   | 113.405 | 90.042  | 135.843 | 131.428 | 155.101 | 145.514 |
| 6   | 114.762 | 73.713  | 146.294 | 138.653 | 147.542 | 134.249 |
| 7   | 114.882 | 102.815 | 143.632 | 139.957 | 155.043 | 149.859 |
| 8   | 115.003 | 82.749  | 143.582 | 136.365 | 148.213 | 138.516 |
| 9   | 117.397 | 88.164  | 148.366 | 143.68  | 141.06  | 129.846 |
| 10  | 120.052 | 84.044  | 148.012 | 140.198 | 163.113 | 149.943 |
| 11  | 125.909 | 70.104  | 144.4   | 139.082 | 141.286 | 130.369 |
| 12  | 126.076 | 76.962  | 146.575 | 141.154 | 143.552 | 132.906 |
| 13  | 126.149 | 122.419 | 156.004 | 153.503 | 165.747 | 162.971 |
| 14  | 126.673 | 90.579  | 152.688 | 144.114 | 144.882 | 132.209 |
| 15  | 129.262 | 124.916 | 148.699 | 147.811 | 165.779 | 162.861 |
| 16  | 129.262 | 125.098 | 148.26  | 147.668 | 165.779 | 161.331 |
| 17  | 130.066 | 99.321  | 152.492 | 146.073 | 159.459 | 150.537 |
| 18  | 130.964 | 108.434 | 144.437 | 136.327 | 160.698 | 154.423 |
| 19  | 131.96  | 106.315 | 147.327 | 144.377 | 173.113 | 169.091 |
| 20  | 132.156 | 108.611 | 152.487 | 147.016 | 167.561 | 162.151 |
| 21  | 134.52  | 82.282  | 157.602 | 141.771 | 143.694 | 134.785 |
| 22  | 134.534 | 116.123 | 166.209 | 163.708 | 160.473 | 156.025 |
| 23  | 135.619 | 107.694 | 158.643 | 150.202 | 154.501 | 144.701 |
| 24  | 136.959 | 109.863 | 146.286 | 144.816 | 163.016 | 159.362 |
| 25  | 137.194 | 131.783 | 160.138 | 158.811 | 164.882 | 161.441 |
| 26  | 137.415 | 133.495 | 159.812 | 158.041 | 144.843 | 139.278 |
| 27  | 137.894 | 98.471  | 151.371 | 150.192 | 165.037 | 158.678 |
| 28  | 138.997 | 53.697  | 152.994 | 142.233 | 169.201 | 150.602 |
| 29  | 139.633 | 93.283  | 159.674 | 147.242 | 152.532 | 143.823 |
| 30  | 140.571 | 98.746  | 152.083 | 143.311 | 161.273 | 156.076 |
| 31  | 142.153 | 109.659 | 157.627 | 150.202 | 150.098 | 141.176 |
| 32  | 142.273 | 138.174 | 148.167 | 146.697 | 163.713 | 162.183 |
| 33  | 142.822 | 128.367 | 164.631 | 156.433 | 145.379 | 136.741 |
| 34  | 144.01  | 118.453 | 147.776 | 147.776 | 163.823 | 156.87  |
| 35  | 144.209 | 119.981 | 153.054 | 152.319 | 154.404 | 151.628 |
| 36  | 144.821 | 115.635 | 161.317 | 153.591 | 154.346 | 146.16  |
| 37  | 144.9   | 112.308 | 153.578 | 145.857 | 161.318 | 156.063 |
| 38  | 146.597 | 108.689 | 152.846 | 149.753 | 141.996 | 134.152 |

| 39  | 148.04  | 109.483 | 159.378 | 150.365 | 154.346 | 145.495 |
|-----|---------|---------|---------|---------|---------|---------|
| 40  | 148.203 | 114.783 | 163.605 | 152.121 | 135.069 | 128.79  |
| No. | Y maks  | Y min   | Cb maks | Cb min  | Cr maks | Cr min  |
| 41  | 149.146 | 126.629 | 156.591 | 155.861 | 173.662 | 161.286 |
| 42  | 149.892 | 101.626 | 162.253 | 154.853 | 150.066 | 145.05  |
| 43  | 150.164 | 129.311 | 163.64  | 157.296 | 138.581 | 127.78  |
| 44  | 150.87  | 116.557 | 168.361 | 159.89  | 155.037 | 149.911 |
| 45  | 150.99  | 102.575 | 176.258 | 160.432 | 161.28  | 154.85  |
| 46  | 152.461 | 128.345 | 161.49  | 152.773 | 151.854 | 145.553 |
| 47  | 153.293 | 90.9    | 147.771 | 139.523 | 167.974 | 158.781 |
| 48  | 153.468 | 116.488 | 157.494 | 146.163 | 163.242 | 154.275 |
| 49  | 153.523 | 136.718 | 159.423 | 157.79  | 156.896 | 150.666 |
| 50  | 153.594 | 150.107 | 164.568 | 162.22  | 147.464 | 143.158 |
| 51  | 153.933 | 125.163 | 150.889 | 149.256 | 155.043 | 149.846 |
| 52  | 153.997 | 73.447  | 150.297 | 144.889 | 183.307 | 164.83  |
| 53  | 154.567 | 151.598 | 165.323 | 163.853 | 159.388 | 156.838 |
| 54  | 155.714 | 151.003 | 162.551 | 160.218 | 167.561 | 160.395 |
| 55  | 157.026 | 136.416 | 158.856 | 156.651 | 179.737 | 159.42  |
| 56  | 158.531 | 123.397 | 164.277 | 151.318 | 154.927 | 147.987 |
| 57  | 158.589 | 125.29  | 160.326 | 154.988 | 165.747 | 162.435 |
| 58  | 158.686 | 135.301 | 164.721 | 155.758 | 165.689 | 145.476 |
| 59  | 159.573 | 108.003 | 145.275 | 143.208 | 168.213 | 157.987 |
| 60  | 160.363 | 132.162 | 168.958 | 159.378 | 156.328 | 153.41  |
| 61  | 160.608 | 109.525 | 167.937 | 148.13  | 136.076 | 127.438 |
| 62  | 161.031 | 135.352 | 155.896 | 153.237 | 150.737 | 144.817 |
| 63  | 161.995 | 142.999 | 156.395 | 153.884 | 169.22  | 165.482 |
| 64  | 162.805 | 142.909 | 172.495 | 167.606 | 147.574 | 145.521 |
| 65  | 163.248 | 133.65  | 173.388 | 160.404 | 158.013 | 152.306 |
| 66  | 163.438 | 109.659 | 165.12  | 150.794 | 147.406 | 141.77  |
| 67  | 163.735 | 144.891 | 170.468 | 163.547 | 161.157 | 154.346 |
| 68  | 165.177 | 148.863 | 167.972 | 158.146 | 151.615 | 145.411 |
| 69  | 165.282 | 111.434 | 156.925 | 155.046 | 144.656 | 130.524 |
| 70  | 165.44  | 122.402 | 171.76  | 157.306 | 143.016 | 139.362 |
| 71  | 165.683 | 124.045 | 159.215 | 157.74  | 161.157 | 158.084 |
| 72  | 166.164 | 148.933 | 163.572 | 161.678 | 162.151 | 157.845 |
| 73  | 166.501 | 120.671 | 161.322 | 148.2   | 140.537 | 125.346 |
| 74  | 166.543 | 140.773 | 165.333 | 159.26  | 153.681 | 149.801 |
| 75  | 167.189 | 147.215 | 166.941 | 162.955 | 161.144 | 153.597 |
| 76  | 167.365 | 163.662 | 165.965 | 164.046 | 162.435 | 158.781 |
| 77  | 168.261 | 119.22  | 165.639 | 151.293 | 163.255 | 159.233 |

| 78  | 168.712 | 103.421 | 161.723 | 137.195 | 161.318 | 154.875 |
|-----|---------|---------|---------|---------|---------|---------|
| 79  | 169.002 | 163.838 | 164.648 | 162.892 | 158.116 | 155.921 |
| 80  | 169.033 | 106.244 | 156.558 | 144.52  | 169.956 | 154.817 |
| No. | Y maks  | Y min   | Cb maks | Cb min  | Cr maks | Cr min  |
| 81  | 169.817 | 145.393 | 164.623 | 157.391 | 157.025 | 153.442 |
| 82  | 170.036 | 121.002 | 165.012 | 153.207 | 153.597 | 143.823 |
| 83  | 170.52  | 141.314 | 160.662 | 157.534 | 170.04  | 163.158 |
| 84  | 170.576 | 148.201 | 160.539 | 154.466 | 154.294 | 149.691 |
| 85  | 171.19  | 121.881 | 166.836 | 155.801 | 144.798 | 126.095 |
| 86  | 171.247 | 109.047 | 153.551 | 150.064 | 141.725 | 129.801 |
| 87  | 171.5   | 160.58  | 170.019 | 169.723 | 150.705 | 147.987 |
| 88  | 171.592 | 151.954 | 171.371 | 160.622 | 153.681 | 147.238 |
| 89  | 172.021 | 143.88  | 169.974 | 163.226 | 134.785 | 125.314 |
| 90  | 172.318 | 126.771 | 163.808 | 157.76  | 163.126 | 156.767 |
| 91  | 172.401 | 137.808 | 157.509 | 153.839 | 143.868 | 138.742 |
| 92  | 172.409 | 128.495 | 159.074 | 146.341 | 152.609 | 146.095 |
| 93  | 172.887 | 143.357 | 174 1   | 160.858 | 142.874 | 36.644  |
| 94  | 173.063 | 121.397 | 170.947 | 153.799 | 165.734 | 156.089 |
| 95  | 173.318 | 117.252 | 178.252 | 148.659 | 167.432 | 158.62  |
| 96  | 173.365 | 168.069 | 166.113 | 163.188 | 160.524 | 151.757 |
| 97  | 174.145 | 139.893 | 166.349 | 161.322 | 156.98  | 145.353 |
| 98  | 174.268 | 151.815 | 166.128 | 160.647 | 158.839 | 153.455 |
| 99  | 174.274 | 128.405 | 168.308 | 155.881 | 158.568 | 149.362 |
| 100 | 174.633 | 134.605 | 165.511 | 154.406 | 154.249 | 149.123 |
| 101 | 174.913 | 138.851 | 163.038 | 161.874 | 143.823 | 128.884 |
| 102 | 175.492 | 140.465 | 163.923 | 151.087 | 170.04  | 154.436 |
| 103 | 175.571 | 132.963 | 165.993 | 162.885 | 153.636 | 146.186 |
| 104 | 175.81  | 171.197 | 168.032 | 164.658 | 155.043 | 149.123 |
| 105 | 176.316 | 116.426 | 169.61  | 152.605 | 167.503 | 154.262 |
| 106 | 176.569 | 144.894 | 169.239 | 168.647 | 152.558 | 144.656 |
| 107 | 177.591 | 160.087 | 172.377 | 164.603 | 154.12  | 144.843 |
| 108 | 177.639 | 151.639 | 167.641 | 162.373 | 130.427 | 121.008 |
| 109 | 177.686 | 128.598 | 172.653 | 157     | 136.799 | 131.518 |
| 110 | 177.794 | 169.374 | 169.226 | 165.393 | 166.612 | 159.388 |
| 111 | 178.346 | 149.242 | 156.824 | 156.824 | 162.351 | 152.422 |
| 112 | 178.499 | 174.204 | 184.418 | 181.779 | 156.012 | 150.447 |
| 113 | 179.161 | 140.554 | 170.375 | 153.425 | 161.331 | 154.83  |
| 114 | 180.029 | 155.954 | 172.776 | 165.18  | 136.883 | 127.451 |
| 115 | 180.794 | 161.206 | 171.396 | 166.981 | 159.459 | 156.896 |



|     |         |         |         |         |         |         |
|-----|---------|---------|---------|---------|---------|---------|
| 116 | 181.209 | 106.447 | 162.197 | 142.458 | 167.567 | 147.987 |
| 117 | 181.935 | 164.542 | 165.96  | 162.566 | 147.438 | 140.995 |
| 118 | 182.041 | 88.846  | 152.653 | 148.233 | 166.961 | 151.583 |
| 119 | 182.096 | 178.146 | 174.484 | 172.141 | 149.943 | 144.914 |
| 120 | 182.452 | 178.106 | 170.242 | 168.767 | 150.085 | 147.367 |
|     |         |         |         |         |         |         |
| No. | Y maks  | Y min   | Cb maks | Cb min  | Cr maks | Cr min  |
| 121 | 182.452 | 178.157 | 169.946 | 169.946 | 149.93  | 147.89  |
| 122 | 182.641 | 115.757 | 154.607 | 154.607 | 141.047 | 127.225 |
| 123 | 184.254 | 146.779 | 163.404 | 163.404 | 165.592 | 157.987 |
| 124 | 184.412 | 161.047 | 175.776 | 175.776 | 151.725 | 145.508 |
| 125 | 184.512 | 160.187 | 165.122 | 165.122 | 159.278 | 148.148 |
| 126 | 184.885 | 167.394 | 161.487 | 161.487 | 163.629 | 159.31  |
| 127 | 185.2   | 155.044 | 179.461 | 179.461 | 151.867 | 146.089 |
| 128 | 186.08  | 182.644 | 176.842 | 176.842 | 151.641 | 148.129 |
| 129 | 186.308 | 149.963 | 166.612 | 166.612 | 173.726 | 157.877 |
| 130 | 186.724 | 162.912 | 165.586 | 165.586 | 171.757 | 156.631 |
| 131 | 186.997 | 103.718 | 167.292 | 167.292 | 158.781 | 152.48  |
| 132 | 187.644 | 156.068 | 194.583 | 194.583 | 151.913 | 137.452 |
| 133 | 187.882 | 124.911 | 178.671 | 178.671 | 129.956 | 119.168 |
| 134 | 188.103 | 153.32  | 168.767 | 168.767 | 160.395 | 150.666 |
| 135 | 188.532 | 141.569 | 171.123 | 171.123 | 141.951 | 129.73  |
| 136 | 188.829 | 112.041 | 146.91  | 146.91  | 174.475 | 154.894 |
| 137 | 189.625 | 152.674 | 172.871 | 172.871 | 146.586 | 134.165 |
| 138 | 189.692 | 170.717 | 171.539 | 171.539 | 146.36  | 139.136 |
| 139 | 189.772 | 185.829 | 181.237 | 181.237 | 149.388 | 143.029 |
| 140 | 190.419 | 162.762 | 171.574 | 171.574 | 163.255 | 154.107 |
| 141 | 191.398 | 166.372 | 164.944 | 164.944 | 146.334 | 140.982 |
| 142 | 192.254 | 173.373 | 182.973 | 182.973 | 140.634 | 128.568 |
| 143 | 192.919 | 164.697 | 164.934 | 164.934 | 158.781 | 149.123 |
| 144 | 192.935 | 176.317 | 177.459 | 177.459 | 157.845 | 152.435 |
| 145 | 192.984 | 123.509 | 150.944 | 150.944 | 173.158 | 158.019 |
| 146 | 194.674 | 174.85  | 169.833 | 169.833 | 154.959 | 147.367 |
| 147 | 195.242 | 182.564 | 174.06  | 174.06  | 141.008 | 135.979 |
| 148 | 195.482 | 152.546 | 178.485 | 178.485 | 162.422 | 145.411 |
| 149 | 196.39  | 163.775 | 186.515 | 186.515 | 144.94  | 136.767 |
| 150 | 196.553 | 188.575 | 182.712 | 182.712 | 148.084 | 143.539 |
| 151 | 196.608 | 178.092 | 173.157 | 173.157 | 150.763 | 141.983 |
| 152 | 196.749 | 172.445 | 181.4   | 181.4   | 171.138 | 150.634 |

|     |         |         |         |         |         |         |
|-----|---------|---------|---------|---------|---------|---------|
| 153 | 197.165 | 167.169 | 172.723 | 172.723 | 163.197 | 153.552 |
| 154 | 197.292 | 183.582 | 171.278 | 171.278 | 141.886 | 138.516 |
| 155 | 197.306 | 169.169 | 172.472 | 172.472 | 148.006 | 138.587 |
| 156 | 197.422 | 151.855 | 175.011 | 175.011 | 148.239 | 141.047 |
| 157 | 197.524 | 120.593 | 177.873 | 177.873 | 159.246 | 150.479 |
| 158 | 198.075 | 157.04  | 178.618 | 178.618 | 175.592 | 152.59  |
| 159 | 198.106 | 182.85  | 176.867 | 176.867 | 153.539 | 149.291 |
| 160 | 198.142 | 168.74  | 185.78  | 185.78  | 141.88  | 137.419 |
| No. | Y maks  | Y min   | Cb maks | Cb min  | Cr maks | Cr min  |
| 161 | 198.383 | 182.437 | 178.465 | 175.979 | 158.807 | 153.468 |
| 162 | 198.995 | 112.138 | 153.197 | 149.512 | 163.92  | 154.12  |
| 163 | 199.185 | 195.6   | 181.568 | 179.955 | 143.823 | 142.861 |
| 164 | 199.186 | 169.002 | 174.983 | 166.113 | 157.974 | 143.571 |
| 165 | 199.248 | 170.81  | 185.346 | 176.925 | 141.312 | 130.524 |
| 166 | 199.555 | 163.007 | 164.718 | 155.878 | 174.236 | 152.325 |
| 167 | 199.594 | 172.099 | 172.959 | 170.912 | 137.406 | 127.309 |
| 168 | 199.783 | 167.96  | 183.615 | 169.309 | 148.045 | 141.331 |
| 169 | 199.86  | 167.245 | 187.862 | 174 15  | 146.993 | 4.798   |
| 170 | 200.656 | 175.075 | 179.388 | 171.707 | 165.45  | 151.783 |
| 171 | 200.897 | 156.811 | 160.845 | 157.732 | 156.192 | 149.123 |
| 172 | 201.374 | 181.617 | 184.029 | 179.649 | 159.485 | 149.769 |
| 173 | 201.39  | 192.198 | 180.108 | 177.888 | 148.129 | 143.584 |
| 174 | 201.7   | 154.284 | 159.641 | 158.906 | 170.182 | 147.909 |
| 175 | 201.711 | 174.916 | 181.297 | 171.998 | 164.94  | 151.628 |
| 176 | 202.359 | 134.407 | 187.842 | 163.334 | 163.649 | 147.574 |
| 177 | 203.242 | 182.63  | 190.052 | 178.573 | 143.113 | 132.59  |
| 178 | 203.486 | 185.316 | 181.854 | 171.88  | 153.597 | 141.331 |
| 179 | 203.897 | 174.725 | 169.715 | 161.758 | 156.928 | 145.385 |
| 180 | 204.057 | 155.882 | 187.734 | 169.457 | 157.871 | 147.277 |
| 181 | 204.274 | 163.248 | 173.586 | 172.224 | 154.359 | 141.783 |
| 182 | 204.501 | 199.678 | 185.095 | 183.472 | 141.854 | 139.149 |
| 183 | 204.733 | 185.907 | 178.746 | 178.746 | 150.04  | 137.574 |
| 184 | 204.887 | 174.275 | 179.225 | 166.552 | 145.624 | 137.309 |
| 185 | 206.107 | 159.413 | 185.248 | 169.161 | 158.084 | 147.987 |
| 186 | 206.502 | 105.53  | 151.627 | 151.351 | 141.867 | 127.193 |
| 187 | 208.555 | 175.822 | 180.798 | 174.321 | 150.705 | 141.286 |
| 188 | 209.022 | 196.171 | 189.781 | 182.88  | 139.375 | 132.209 |
| 189 | 209.311 | 203.345 | 201.303 | 198.97  | 128.11  | 123.649 |
| 190 | 210.634 | 180.187 | 166.888 | 162.789 | 147.935 | 137.496 |
| 191 | 210.754 | 193.997 | 178.347 | 177.898 | 150.098 | 143.81  |

|     |         |         |         |         |         |         |
|-----|---------|---------|---------|---------|---------|---------|
| 192 | 211.153 | 186.3   | 188.188 | 176.122 | 143.81  | 137.309 |
| 193 | 211.612 | 174.294 | 187.591 | 171.978 | 154.443 | 141.144 |
| 194 | 211.829 | 191.962 | 175.55  | 173.493 | 142.041 | 136.16  |
| 195 | 212.014 | 206.409 | 179.862 | 175.61  | 147.877 | 137.367 |
| 196 | 212.62  | 204.96  | 192.41  | 190.353 | 134.275 | 132.306 |
| 197 | 213.478 | 201.161 | 179.862 | 175.442 | 145.682 | 138.445 |
| 198 | 213.597 | 182.351 | 187.581 | 183.013 | 154.443 | 142.971 |
| 199 | 213.639 | 209.824 | 186.6   | 185.712 | 143.823 | 141.854 |
| 200 | 213.667 | 190.87  | 171.017 | 171.017 | 150.795 | 143.132 |