

LAMPIRAN A

DATA KABEL COAXIAL

Tipe Kabel	Impedansi
RG-6	75.0
RG-8X	52.0
RG-8 Foam	52.0
RG-8A	50.0
RG-9	51.0
RG-9B	50.0
RG-11	75.0
RG-11 Foam	75.0
RG-11A	75.0
RG-12	75.0
RG-12A	75.0
RG-17	52.0
RG-17A	52.0
RG-55	53.5
RG-55A	50.0
RG-58	53.5
RG-58 Foam	53.5
RG-58A	53.5
RG-58C	50.0

Tipe Kabel	Impedansi
RG-59	73.0
RG-59 Foam	75.0
RG-59A	73.0
RG-62	93.0
RG-62 Foam	95.0
RG-62A	93.0
RG-133A	95.0
RG-141	50.0
RG-141A	50.0
RG-142	50.0
RG-142B	50.0
RG-174	50.0
RG-213	50.0
RG-214*	50.0
RG-215	50.0
RG-216	75.0
RG-223*	50.0
9913*	50.0
9914*	50.0

* *Double Shield*

Coax Cable Specifications						
Type	Characteristic Impedance	Outside Diameter	Velocity Factor	Attenuation (dB/10 metres) @ 100 MHz	Attenuation (dB/10 metres) @ 1000 MHz	Comments
RG5/U	52.5	8.4	0.66	1.0	3.8	
RG6A/U	75	8.4	0.66	1.0	3.7	
RG9/U	51.0	10.7	0.66	0.66	2.4	
RG10A/U	50	12.1	0.66	0.66	2.6	
RG11A/U	75	10.3	0.66	0.76	2.6	
RG12A/U	75	12.1	0.66	0.76	2.6	
RG20A/U	50	30.4	0.66	0.22	1.2	
RG58C/U	50	5.0	0.66	1.8	7.6	
RG59B/U	75	6.1	0.66	1.2	4.6	
RG62A/U	93	6.1	0.84	0.9	2.8	
RG213/U	50	10.3	0.66	0.62	2.6	Polythene dielectric Double screened
RG214/U	50	10.8	0.66	0.76	2.9	Silver plated copper wire
RG223/U	50	5.5	0.66	1.58	5.4	
UR43	50	5	0.66	1.3	4.46	
UR57	75	10.2	0.66	0.63	2.3	Similar to RG11A/U
UR67	50	10.3	0.66	0.66	2.51	Similar to RG213/U
UR74	51	22.1	0.66	0.33	1.4	
UR76	51	5.0	0.66	1.7	7.3	Similar to RG58C/U
UR77	75	22.1	0.66	0.33	1.4	
UR79	50	21.7	0.96	0.17	0.6	
UR90	75	6.1	0.66	1.2	4.1	Similar to RG59B/U
*Std TV Coax	75	5.1	0.66	1.1	4.0	
*Low Loss TV Coax	75	7.25	0.86	0.75	2.6	Semi-air spaced

Sumner : [2]

LAMPIRAN B

BEBERAPA MODEM 3G BERKONEKTOR EKSTERNAL

SERI MODEM	NAMA MODEM
1. SIERRA AIRCARD SERIES	Sierra Wireless Aircard 555D Sierra Wireless Aircard 580 Sierra Wireless Aircard 597E Sierra Wireless Aircard 775 Sierra Wireless Aircard 850 Sierra Wireless Aircard 860 Sierra Wireless Aircard 875 Sierra Wireless Aircard 880 Sierra Wireless Aircard 880E Sierra Wireless Aircard 880U Sierra Wireless Aircard 881 Sierra Wireless Aircard 881E Sierra Wireless Aircard 881U
2. SIERRA COMPASS SERIES	Sierra Wireless Aircard 597 Sierra Wireless Aircard 885
3. SONY ERICSSON SERIES	Sony Ericsson EC400 Sony Ericsson EC400G Sony Ericsson PC300
4. OPTION SERIES	Option Wireless 3G QUAD Option Wireless 7.2 HSDPA Option Wireless EDGE Option Wireless Express Option Wireless Fusion Option Wireless GT Max

SERI MODEM	NAMA MODEM
5. HUAWEI SERIES	Option Wireless HSDPA Option Wireless Max HSDPA Huawei E156G Huawei E160 Huawei E160G Huawei E169 Huawei E169G Huawei E600 Huawei E612 Huawei E618 Huawei E620 Huawei E630 Huawei E800 Huawei E870
6. NOVATEL SERIES	Novatel Wireless MC727
7. MERLIN & ZTE SERIES	ZTE MF332 Merlin U630 U740 U730 V620 XU870 X950D U530 630 740 870

LAMPIRAN C

HASIL PERCOBAAN TERHADAP BEBERAPA ISP

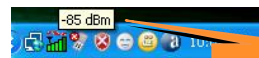
ISP : Telkomsel Flash

SEBELUM PASANG ANTENA



0 bar menjadi HSDPA (4 bar)

SESUDAH PASANG ANTENA



Kenaikan 19 dBm



0 bar menjadi HSDPA (2 bar)



Kenaikan 3 dBm

ISP : Telkomsel Flash

SEBELUM PASANG ANTENA



GPRS menjadi HSDPA (1 bar)

SESUDAH PASANG ANTENA



Penurunan 7 dBm



0 bar menjadi HSDPA (3 bar)

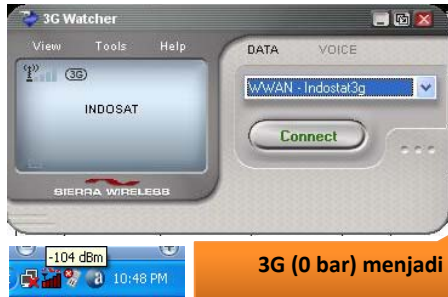


Kenaikan 23 dBm

ISP : IM2 Broom Classic

SEBELUM PASANG ANTENA

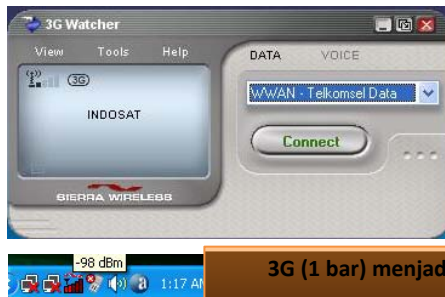
SESUDAH PASANG ANTENA



3G (0 bar) menjadi 3G (4 bar)



Kenaikan 20 dBm



3G (1 bar) menjadi 3G (4 bar)



Kenaikan 18 dBm

ISP : IM2 Broom Classic

SEBELUM PASANG ANTENA



3G (1 bar) menjadi 3G (5 bar full)

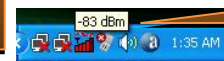
SESUDAH PASANG ANTENA



Kenaikan 34 dBm



3G (1 bar) menjadi 3G (3 bar)



Kenaikan 15 dBm

LAMPIRAN D

FOTO

Foto *Cable and Antenna Analyser*



Foto *Set-up Pengukuran VSWR*



Foto *Signal Generator*



Foto *Antena Pemancar*



Foto *Spectrum Analyzer*



Foto Set-up Antena Pemancar



Foto Rotator

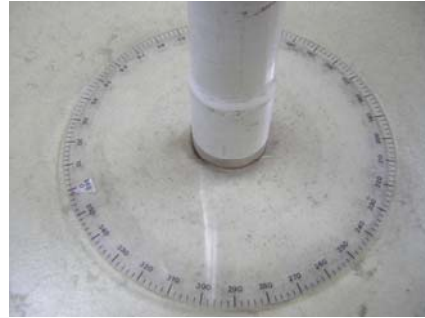


Foto *Set-up* Antena Penerima



Foto *Set-up* Antena – Modem – Laptop



Foto *Set-up* Pengukuran *Gain* dan Pola Radiasi



Foto *Set-up* Modem ke Laptop

