

Lampiran A

Listing Program

Form 1 : Tampilan Pembuka (Frm_Opening)

```
Private Sub Cmd_Keluar_Click()  
    Unload Me  
End Sub
```

```
Private Sub Cmd_Lanjut_Click()  
    Frm_Menu.Show  
    Unload Me  
End Sub
```

Form 2 : Menu Program (Frm_Menu)

```
Private Sub Cmd_Ambil_Click()  
    Ambil_Data  
End Sub
```

```
Private Sub Cmd_Cek_Click()  
    Txt_Counter.Text = ""  
    Txt_Counter.Text = Len(Frm_Menu.Txt_Data.Text)  
End Sub
```

```
Private Sub Cmd_Clear_Click()  
    Txt_Data.Text = ""  
End Sub
```

```
Private Sub Cmd_Hapus_Click()  
    Hapus_Data True  
End Sub
```

```
Private Sub Cmd_Pilih_Click()  
    Obj_Cmd.Filter = "Semua Jenis File (*.*)|*.*"  
    Obj_Cmd.DialogTitle = "Buka File"  
    Obj_Cmd.ShowOpen  
    Txt_Path.Text = Obj_Cmd.FileName  
    Lbl_Pesan.Caption = "Masukkan Data :"  
End Sub
```

```
Private Sub Cmd_Simpan_Click()  
    Dim cek_panjang  
    Dim pesan  
    Dim kons1 As Integer  
  
    pesan = Txt_Data  
    cek_panjang = Len(pesan)  
  
    If cek_panjang > 32750 Then  
        MsgBox "Pesan lebih dari 32 Kb", vbInformation, "Info"  
        Exit Sub  
    End If  
  
    If txt_kons = "" Then  
        MsgBox "Masukkan Nilai Antara 0-255 Untuk Konstanta Enkripsi",  
            vbInformation, "Info"  
        Exit Sub  
    End If  
  
    kons1 = txt_kons
```

```
If kons1 > 255 Then
    MsgBox "Masukkan Nilai Antara 0-255 Untuk Konstanta Enkripsi",
    vbInformation, "Info"
    Exit Sub
ElseIf kons1 < 0 Then
    MsgBox "Masukkan Nilai Antara 0-255 Untuk Konstanta Enkripsi",
    vbInformation, "Info"
    Exit Sub
End If
```

```
If Chk_Password.Value = 1 Then
    Frm_Pass.Show
Else
    Simpan_Data
End If
```

```
End Sub
```

```
Private Sub Form_load()
    Txt_Path.Text = "Pilih File >>>>"
End Sub
```

```
Private Sub Mnu_About_Click()
    Frm_About.Show 1
End Sub
```

```
Private Sub Mnu_keluar_Click()
    Unload Me
End Sub
```

```
Private Sub Mnu_Petunjuk_Click()  
    Frm_Help.Show  
End Sub
```

Form 3 : Password (Frm_Pass)

```
Private Sub Chk_Mask_Click()  
  
    If Chk_Mask.Value = 0 Then  
        Txt_Password.PasswordChar = ""  
    Else  
        Txt_Password.PasswordChar = "*"   
    End If  
  
End Sub
```

```
Private Sub Cmd_Batal_Click()  
    Unload Me  
End Sub
```

```
Private Sub Cmd_Ok_Click()  
  
    If Cmd_Ok.Caption = "OK" Then  
        Dim Passwr As String  
  
        Passwr = Cari_Password  
  
        If Passwr = Txt_Password.Text Then  
            Load_Teks  
            Unload Me  
        End If  
    End If
```

```
Else
    MsgBox "Password Salah!", vbInformation, "ERROR:.."
    Exit Sub
End If
```

```
Else
    Simpan_Data
    Unload Me
End If
```

```
End Sub
```

Form 4 : Petunjuk (Frm_Help)

```
Private Sub Cmd_Ok_Click()
    Unload Me
End Sub
```

Form 5 : Petunjuk (Frm_About)

```
Private Sub Cmd_Ok_Click()
    Unload Me
End Sub
```

Modul : Simpan_ambil_hapus.bas (Simpan_Ambil_Hapus)

```
'-----  
'Modul : Simpan_ambil_hapus  
'-----  
  
Option Explicit  
    Private Password As String  
    Private SemuaFile As String  
    Private Ada_Data As Boolean  
    Private Pjg_Data As String * 5  
    Private Pjg_Password As String * 2  
    Private Const NoPass = "Ñøpå§§®"  
    Private Const MulaiData = "Æ»"  
    Private Const MulaiPassword = "»Æ"  
    Private Const AkhirData = "ðæÿ"  
  
'-----  
' Buka File  
'-----  
  
Private Function Buka_File(Num As Byte)  
    Open Frm_Menu.Txt_Path.Text For Binary As Num  
End Function  
  
'-----  
' Tutup File  
'-----  
  
Private Sub Tutup_File(Num As Byte)  
    Close #Num  
End Sub
```

```
'-----  
' Fungsi Ambil String  
'-----  
Private Function Ambil_String(Str As String) As String  
    Dim No_Spasi As String  
    Dim Ambil_D As String  
  
    No_Spasi = Trim(Str)  
    Ambil_D = Dekripsi(No_Spasi)  
    Ambil_String = Ambil_D  
  
End Function
```

```
'-----  
' Enkripsi (ambil huruf dalam bentuk ascii tambah 100)  
'-----  
Private Function Enkripsi(ByVal Str As String)  
    Dim Data As String, i  
    Dim kons As Integer  
  
    kons = Frm_Menu.txt_kons.Text  
  
    For i = 1 To Len(Str)  
        Data = Mid$(Str, i, 1)  
        hasil = Asc(Data) + kons  
  
        If hasil > 255 Then  
            hasil = hasil - 256  
        Else  
            hasil = hasil  
        End If  
    End For
```



```
        Mid$(Str, i, 1) = Chr(hasil)
    Next i
    Enkripsi = Str
End Function

'-----
' Dekripsi (ambil huruf dalam bentuk ascii kurang 100)
'-----

Private Function Dekripsi(ByVal Str As String)
    Dim Data As String, i
    Dim kons As Integer

    kons = Frm_Menu.txt_kons.Text

    For i = 1 To Len(Str)
        Data = Mid$(Str, i, 1)
        hasil = Asc(Data) - kons

        If hasil < 0 Then
            hasil = hasil + 256
        Else
            hasil = hasil
        End If

        Mid$(Str, i, 1) = Chr(hasil)
    Next i
    Dekripsi = Str
End Function
```

```
'-----  
' Cek sudah ada data yang ditambahkan apa belum (cek "†Đ‡")  
'-----  
  
Private Function Cek_Data() As Boolean  
    Dim Akhir As String * 3  
  
    Buka_File 1  
        Get #1, LOF(1) - 2, Akhir  
    Tutup_File 1  
  
    If Akhir = AkhirData Then  
        Cek_Data = True  
    Else  
        Cek_Data = False  
    End If  
  
End Function  
  
'-----  
' Hapus Data  
'-----  
  
Public Sub Hapus_Data(Question As Boolean)  
    On Error GoTo q  
  
    If Question = True Then  
  
        If MsgBox("Apakah anda yakin ingin menghapus Data pada file?",  
vbInformation + vbOKCancel, "Tanya?") = vbOK Then  
  
            Ada_Data = Cek_Data
```

```
If Ada_Data = False Then
    MsgBox "Tidak ada data pada file!", vbInformation, "Tidak ada data"
Exit Sub
```

```
Else
```

```
Dim t0 As Long
Dim Brray() As Byte
Dim FBaru As String, FLama As String
```

```
Buka_File 1
    Get #1, LOF(1) - 9, Pjg_Data
    Get #1, , Pjg_Password
Tutup_File 1
```

```
Pjg_Data = Ambil_String(Pjg_Data)
Pjg_Password = Ambil_String(Pjg_Password)
```

```
t0 = 18 + Pjg_Password + Pjg_Data
```

```
Buka_File 2
    t0 = LOF(2) - t0 - 1
        ReDim Brray(0 To t0)
        Get #2, , Brray()
Tutup_File 2
```

```
FBaru = App.Path & "\TempFile.scd"
FLama = Frm_Menu.Txt_Path.Text
```

```
Open FBaru For Binary As #3
    Put #3, , Brray()
Tutup_File 3
```

```
End If

Kill FLama: Name FBaru As FLama

End If
End If
Exit Sub

q:
MsgBox "Error: " & Err.Description, vbInformation, "ERROR:.."
End Sub
```

```
'-----
' Cek di file ada password? Apabila tidak ada masukkan ""
'-----
```

```
Public Function Cari_Password() As String
Dim Ln As Integer
Dim new_data As String
Dim Passw As String * 20
```

```
Buka_File 2
Get #2, LOF(2) - 4, Pjg_Password
Tutup_File 2
```

```
Pjg_Password = Ambil_String(Pjg_Password)
Ln = 9 + Pjg_Password
```

```
Buka_File 3
Get #3, LOF(3) - Ln, Passw
Tutup_File 3
```

```
new_data = Mid(Passw, 1, Pjg_Password)
```

```
If new_data = NoPass Then
```

```
    Cari_Password = ""
```

```
Else
```

```
    Cari_Password = Dekripsi(new_data)
```

```
End If
```

```
End Function
```

```
'-----
```

```
' Ambil data dari file
```

```
'-----
```

```
Public Sub Ambil_Data()
```

```
On Error GoTo w
```

```
Dim Psswr As String
```

```
Ada_Data = Cek_Data
```

```
If Ada_Data = False Then
```

```
    MsgBox "Tidak ada data pada file!", vbInformation, "Tidak ada data"
```

```
Exit Sub
```

```
Else
```

```
Psswr = Cari_Password
```

```
    If Psswr = "" Then
```

```
        Load_Teks
```

```
    Else
```

```
        Frm_Pass.Show: Frm_Pass.Cmd_Ok.Caption = "OK"
```

```
    End If
```

```
End If
Exit Sub

w:
    MsgBox "Error: " & Err.Description, vbInformation, "ERROR:.."
End Sub
```

```
'-----
' load pesan dari file
'-----
```

```
Public Sub Load_Teks()
```

```
On Error GoTo q
```

```
Dim t0 As Integer
```

```
Dim Str As String
```

```
Buka_File 1
```

```
    Get #1, LOF(1) - 9, Pjg_Data
```

```
    Get #1, , Pjg_Password
```

```
Tutup_File 1
```

```
Pjg_Data = Ambil_String(Pjg_Data)
```

```
Pjg_Password = Ambil_String(Pjg_Password)
```

```
t0 = 9 + Pjg_Password + 2 + Pjg_Data
```

```
Str = String(Pjg_Data, " ")
```

```
Buka_File 2
```

```
    Get #2, LOF(2) - t0, Str
```

```
Tutup_File 2
```

```
Frm_Menu.Txt_Data.Text = Dekripsi(Str)
Exit Sub

q:
  MsgBox "Error: " & Err.Description, vbInformation, "ERROR:.."
End Sub

'-----
' Simpan data ke file
'-----

Public Sub Simpan_Data()
  On Error GoTo q

  Dim Tanya
  Dim Password As String

  Ada_Data = Cek_Data

  If Ada_Data = True Then
    Tanya = MsgBox("Ada Data Pada File, Apakah Anda Ingin Menggantinya?",
      vbInformation + vbYesNo, "Info")

    If Tanya = vbYes Then
      Hapus_Data False
      GoTo w
    Else
      Exit Sub
    End If

  Else

  w:
```

```
Pjg_Data = Enkripsi(Len(Frm_Menu.Txt_Data.Text))
```

```
Buka_File 1
```

```
Seek #1, LOF(1) + 1
```

```
Put #1, , MulaiData
```

```
Put #1, , Enkripsi(Frm_Menu.Txt_Data.Text)
```

```
Put #1, , MulaiPassword
```

```
If Frm_Menu.Chk_Password.Value = vbUnchecked Then
```

```
    Pjg_Password = Enkripsi("7")
```

```
    Put #1, , NoPass
```

```
Else
```

```
    Password = Enkripsi(Frm_Pass.Txt_Password.Text)
```

```
    Pjg_Password = Enkripsi(Len(Frm_Pass.Txt_Password.Text))
```

```
    Put #1, , Password
```

```
End If
```

```
Put #1, , Pjg_Data
```

```
Put #1, , Pjg_Password
```

```
Put #1, , AkhirData
```

```
Tutup_File 1
```

```
MsgBox "Data Berhasil Disimpan", vbInformation, "Info"
```

```
End If
```

```
Frm_Menu.Txt_Data.Text = ""
```

```
Exit Sub
```

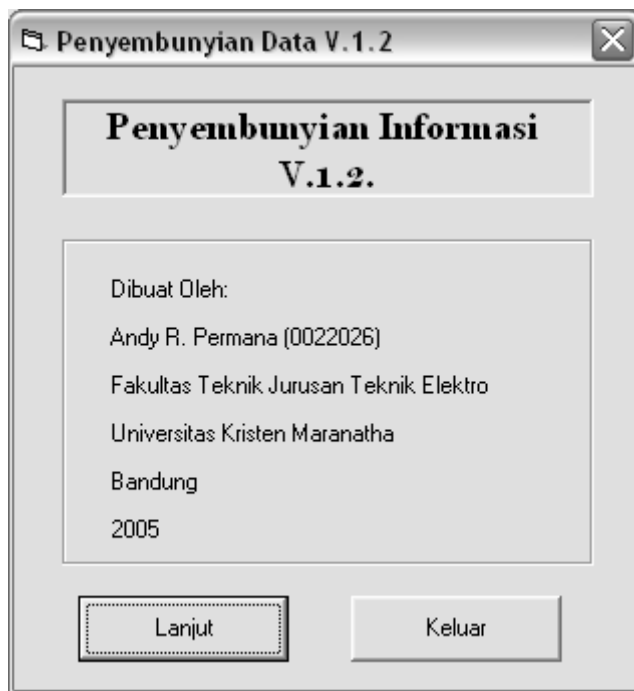
```
q:
```

```
MsgBox "Error: " & Err.Description, vbInformation, "ERROR:..."
```

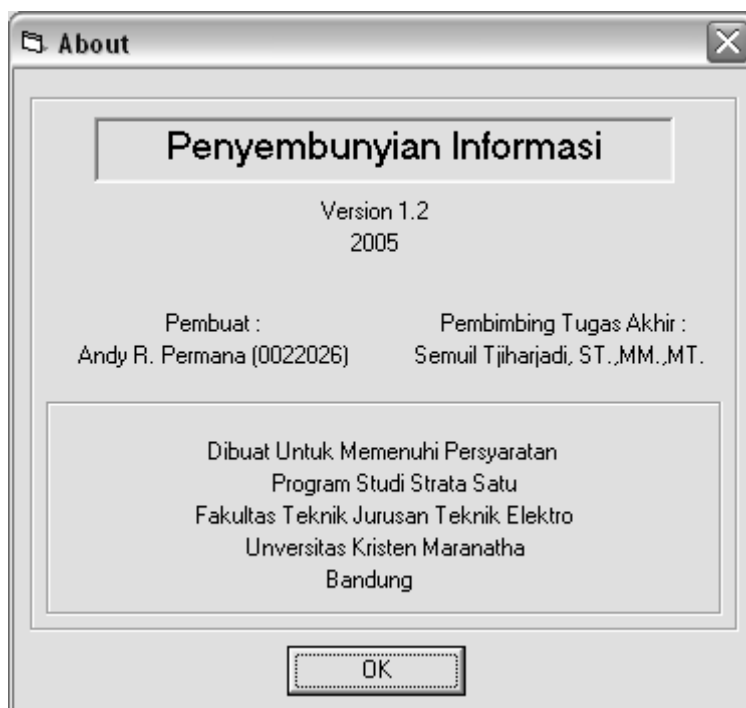
```
End Sub
```

Lampiran B

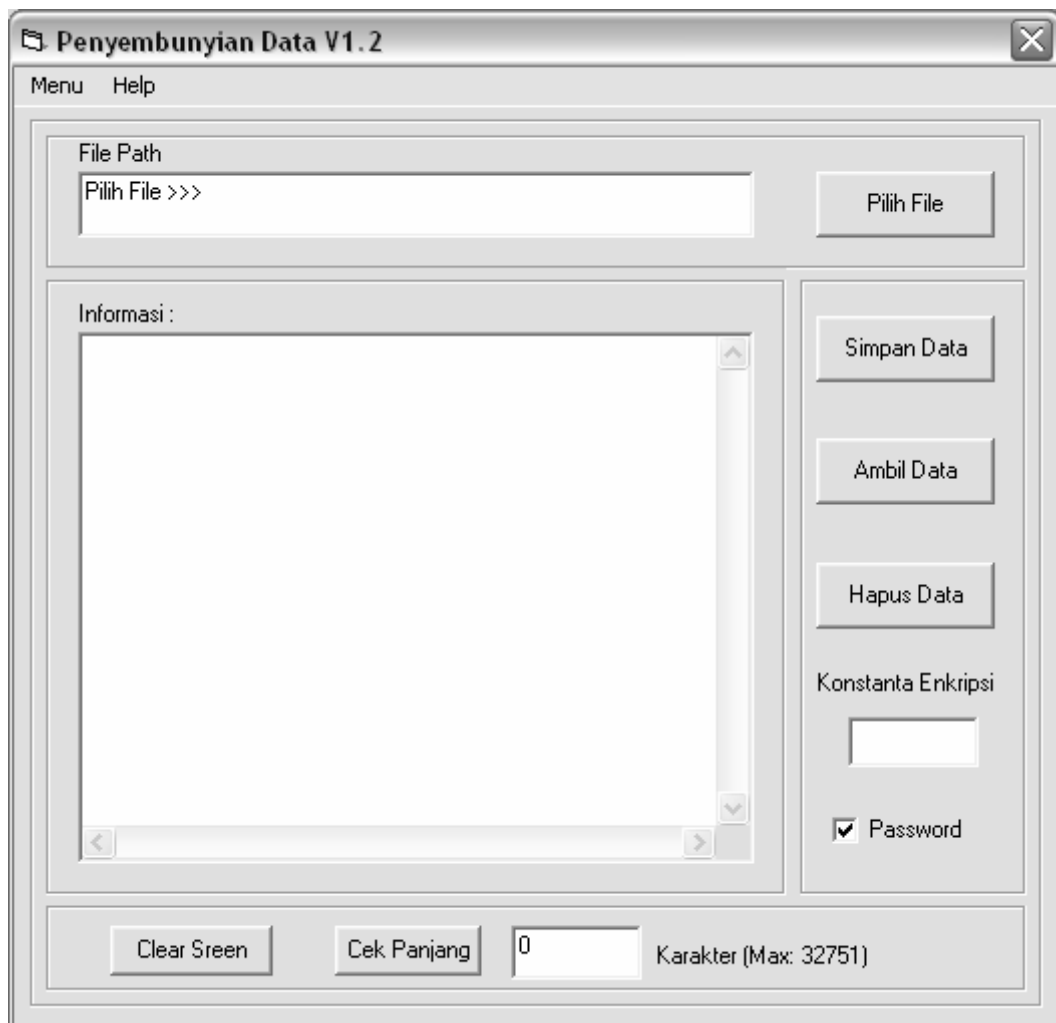
Tampilan Program
Penyembunyian Data



Gambar B.1 Tampilan Pembuka Program Penyembunyian Data



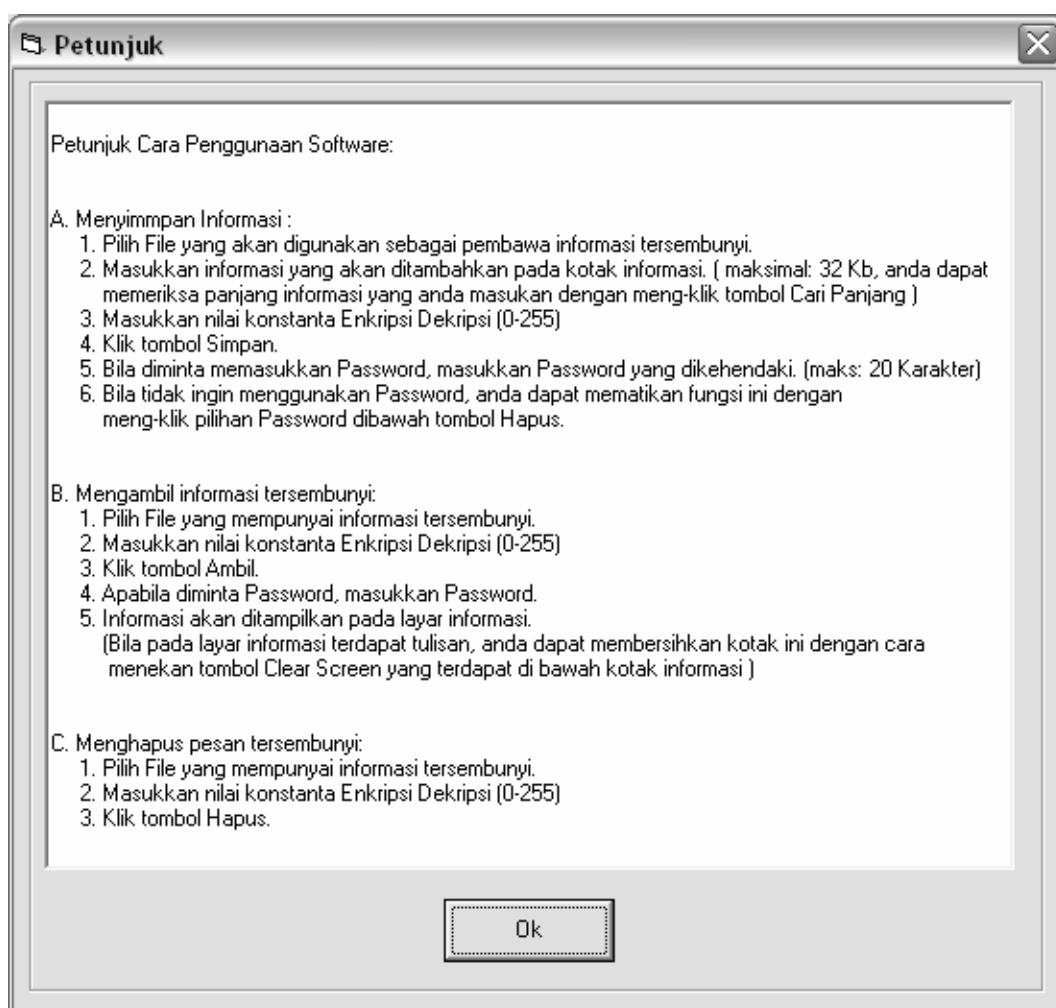
Gambar B.2 Tampilan Menu About Program Penyembunyian Data



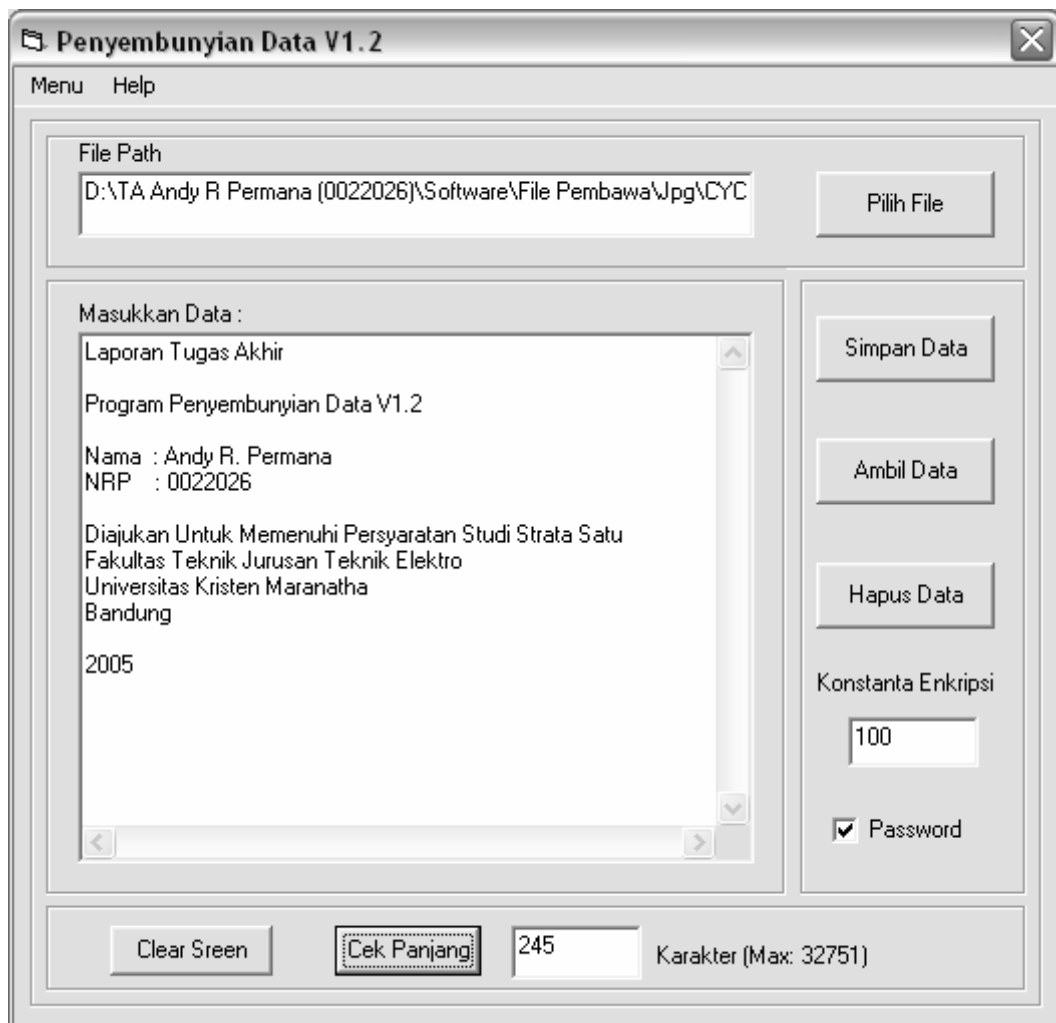
Gambar B.3 Tampilan MenuUtama Program Penyembunyian Data



Gambar B.4 Tampilan Password Program Penyembunyian Data



Gambar B.5 Tampilan Menu Help Program Penyembunyian Data



Gambar B.6 Contoh Penggunaan Program Penyembunyian Data



Gambar B.7 Contoh Memasukkan Password Pada Program Penyembunyian Data