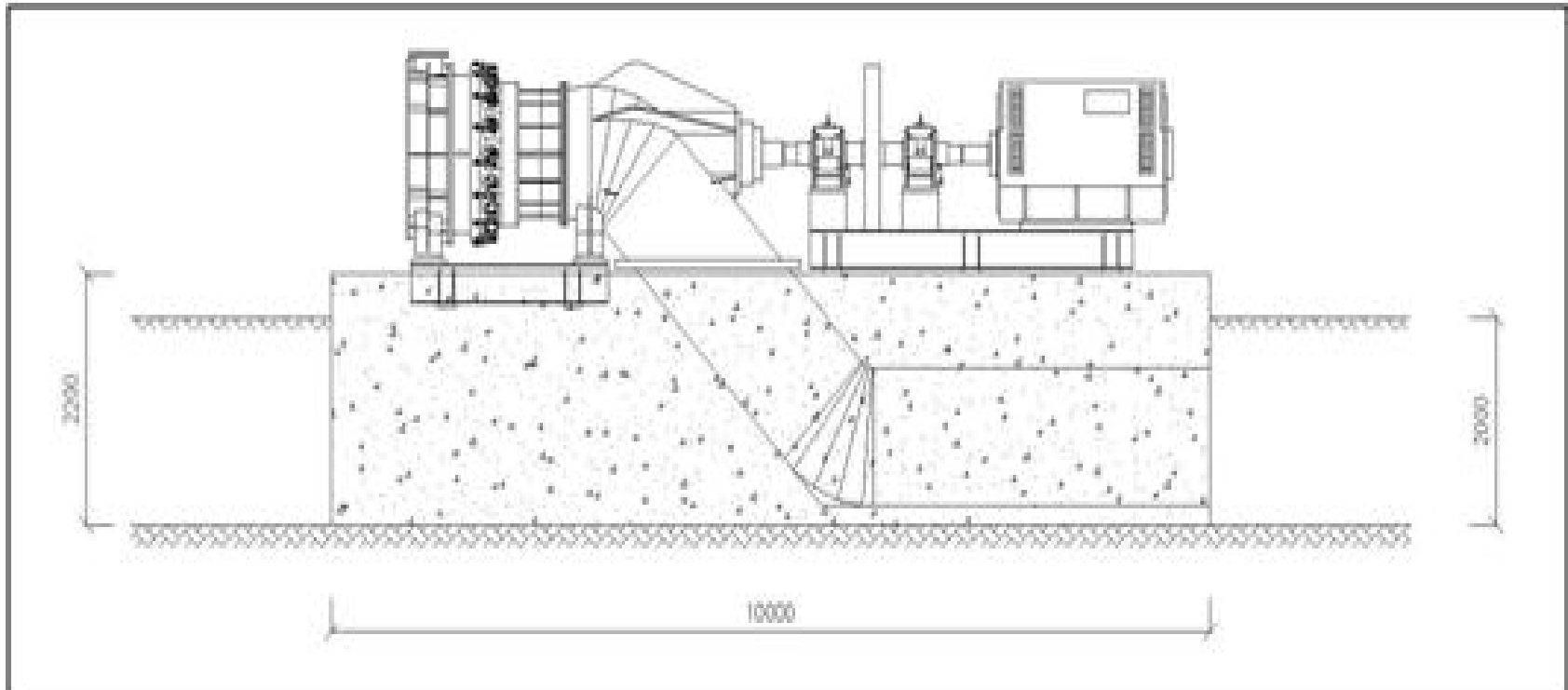
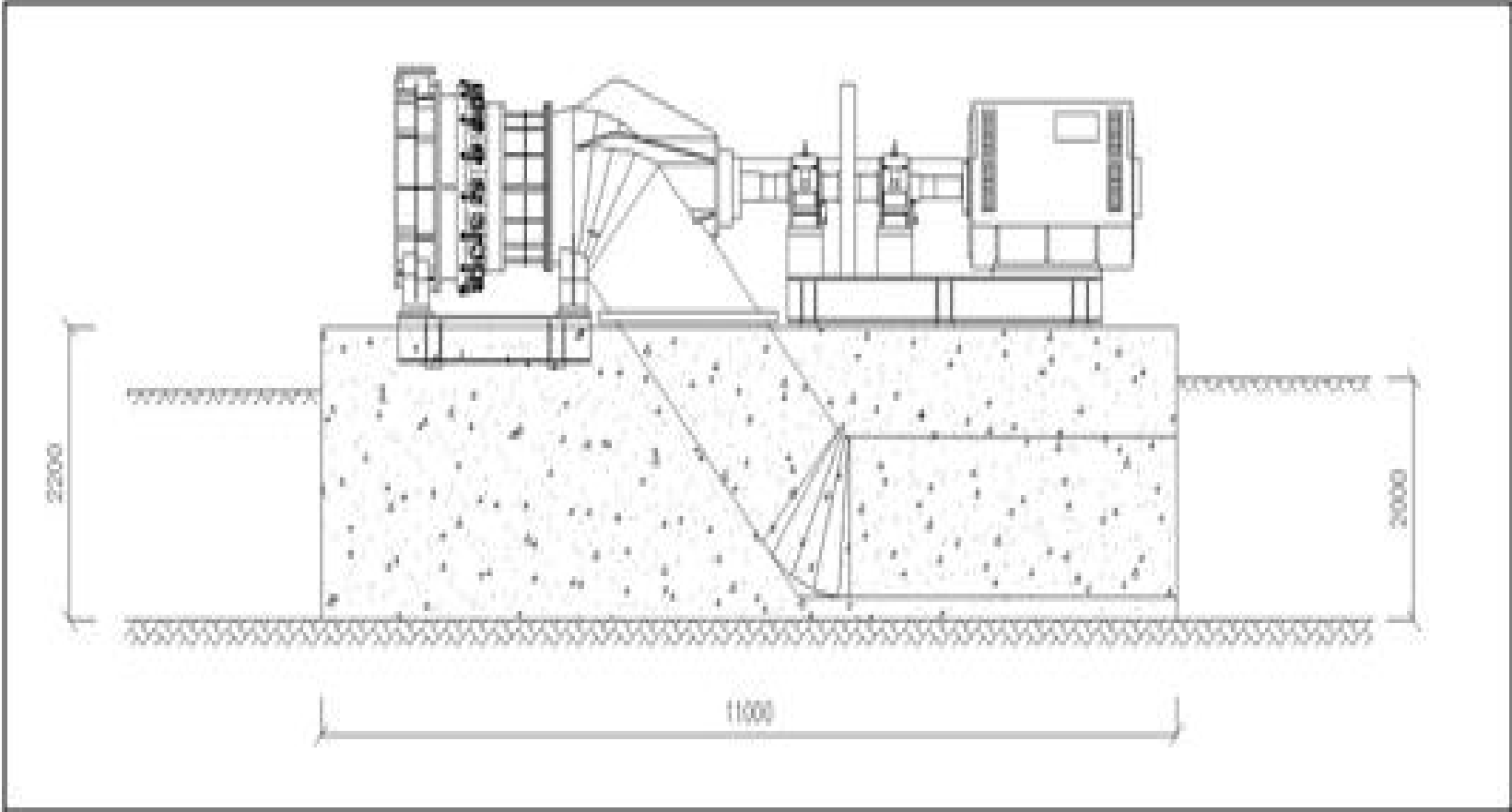


LAMPIRAN I

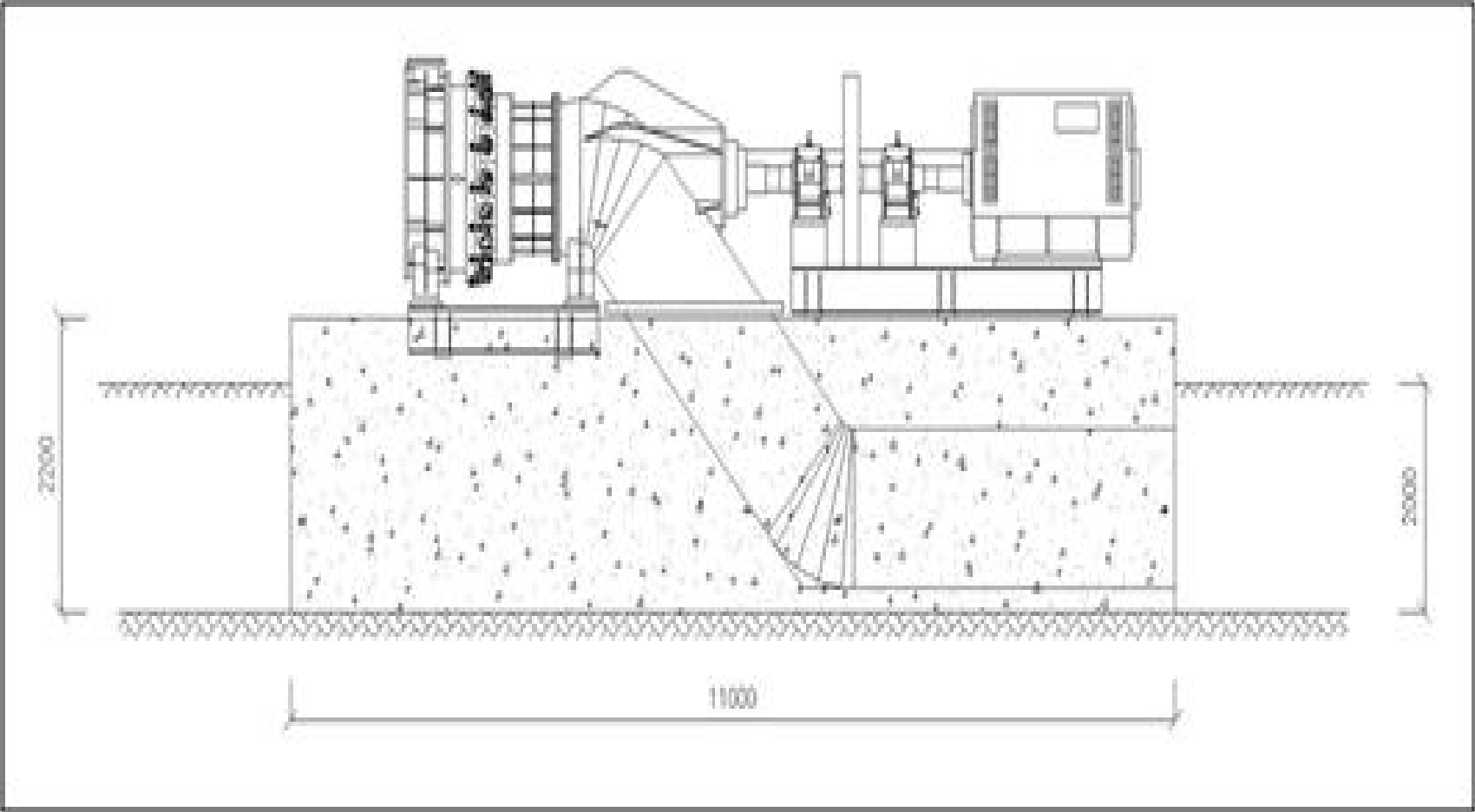
PONDASI MESIN TIPE BLOK 1



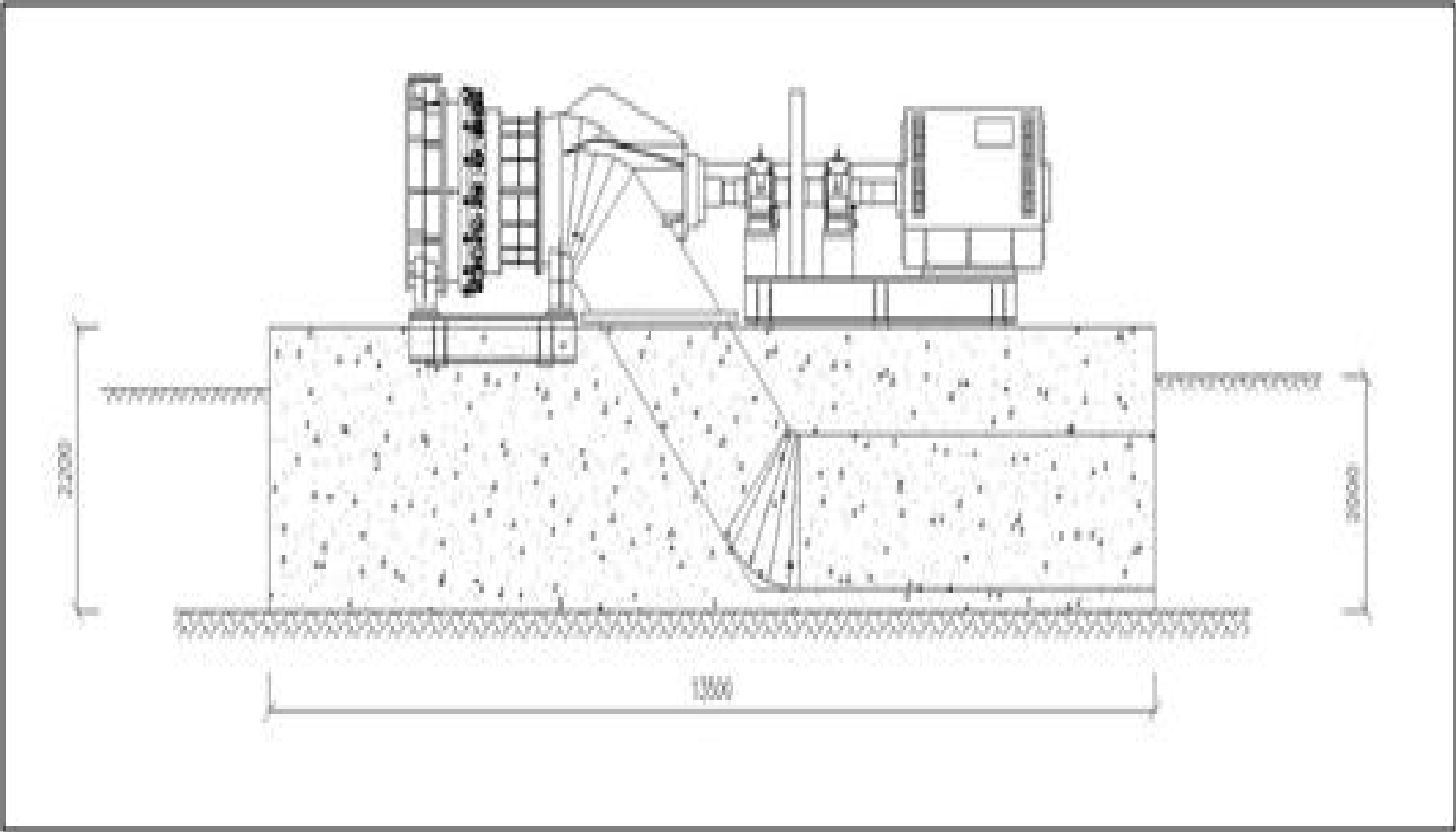
PONDASI MESIN TIPE BLOK 2



PONDASI MESIN TIPE BLOK 3



PONDASI MESIN TIPE BLOK 4



LAMPIRAN II

CONE PENETRATION TESTS

ASTM D 3441-98

PROJECT : PLTM SEMAWUNG 1X600KW

LOCATION : SEMAWUNG KALIBAWANG KULON PROGO

DATE : July 20, 2012

Operator : SDM

Elevation : +25.00

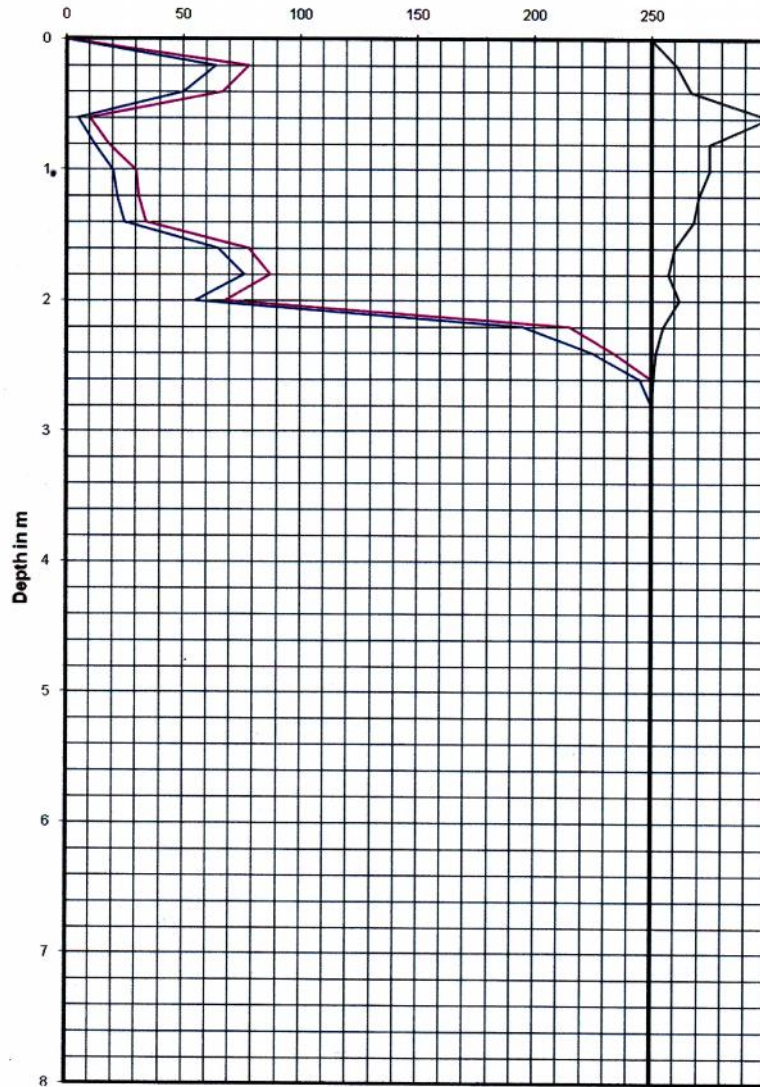
GWL : -26 m

No. Titik : TS1

Kedalaman (m)	Perlawanan penetrasi konus, qc (kg/cm ²)	Jumlah perlawanan n If = qc + fs (kg/cm ²)	Hambatan lekat, fs (kg/cm ²)	fs X 20/10 (kg/cm)	Jumlah hambatan lekat, Σfs (kg/cm)	Hambatan setempat, fi=fs/10 (kg/cm)	R _f (%)
0.00	0	0	0	0	0	0	0
0.20	64	78	14	28	28	1.4	2.19
0.40	50	67	17	34	62	1.7	3.40
0.60	5	10	5	10	72	0.5	10.00
0.80	12	18	6	12	84	0.6	5.00
1.00	20	30	10	20	104	1	5.00
1.20	22	31	9	18	122	0.9	4.09
1.40	25	34	9	18	140	0.9	3.60
1.60	65	78	13	26	166	1.3	2.00
1.80	76	87	11	22	188	1.1	1.45
2.00	55	68	13	26	214	1.3	2.36
2.20	195	215	20	40	254	2	1.03
2.40	225	234	9	18	272	0.9	0.40
2.60	245	250	5	10	282	0.5	0.20
2.80	250	250	0	0	282	0	0.00
3.00	>250						
3.20							
3.40							
3.60							
3.80							
4.00							
4.20							
4.40							
4.60							
4.80							
5.00							
5.20							
5.40							
5.60							
5.80							
6.00							
6.20							
6.40							
6.60							
6.80							
7.00							
7.20							
7.40							
7.60							
7.80							
8.00							
8.20							
8.40							
8.60							

TS1

q_c in kg/cm^2 , f_c in kg/cm^2 , R_f in %



R_f menurut Schmertmann, 1969

- 0 - 0.5% batuan lunak atau gravel lepas
- 0.5 - 2% pasir atau gravel
- 2 - 5% lempung - pasir, campuran lanau
- > 5% lempung