

Part of **SPRINGER NATURE**[PROCEEDINGS](#) | [JOURNALS](#) | [BOOKS](#)

Search

Series: [Advances in Social Science, Education and Humanities Research](#)

Proceedings of the 1st World Conference on Social and Humanities Research (W-SHARE 2021)

PROCEEDINGS OF THE 1ST WORLD CONFERENCE ON SOCIAL AND HUMANITIES RESEARCH 
(W-SHARE 2021)

[Spatial Experience Through Virtual Tour During Pandemic Covid-19 as A Cultural Resilience: Case Study - Pecinan Village, Jamblang, Cirebon, Indonesia](#)

Authors

Tessa Eka Darmayanti^{1, *}, Krismanto Kusbiantoro², Cindrawaty Lesmana³, Roi Milyardi³, Irena Vanessa Gunawan¹, Amanda Muliati¹, Ferlina Sugata²

¹ Department of Interior Design, Faculty of Art and Design, Universitas Kristen Maranatha, Indonesia

² Department of Architecture, Faculty of Art and Design, Universitas Kristen Maranatha, Indonesia

³ Department of Civil Engineering, Faculty of Engineering, Universitas Kristen Maranatha,

* Corresponding author. Email: tessaeka82@gmail.com

Corresponding Author

Tessa Eka Darmayanti

Available Online 11 April 2022.

DOI

[10.2991/assehr.k.220402.008](https://doi.org/10.2991/assehr.k.220402.008) [How to use a DOI?](#)

Keywords

Spatial experience; cultural resilience; virtual tour; pecinan Jamblang; phenomenology



Abstract

The article was formed from the virtual tour during the pandemic of COVID-19. The activity is part of a collaboration lecture between two universities based in Bandung, Indonesia, and Guanxi, China. The pandemic truly pushed several offline activities into online activities, including tours to historical sites. A virtual tour to historical Pecinan in Jamblang Cirebon becomes a solution to survive the new normal era. This strategy is automatically connected, reconnect, exchange, and expand people's experience and cultural knowledge in different places and disparate time frames. The research aims to give a perspective of spatial experience through virtual activity. This qualitative research uses a phenomenological approach to fulfill the objective because the technique is closely linked to space, experience, and perception in any media. The finding of this research reveals that pandemics will never close the possibility of being able to experience and appreciate the existence of heritage and cultural values in Pecinan, Jamblang. So that one of the learning processes keeps alive, one of the national identities not be lessened, and cultural resilience will be maintained.

Copyright

© 2022 The Authors. Published by Atlantis Press SARL.

Open Access

This is an open access article distributed under the CC BY-NC 4.0 license.

[+ Download article \(PDF\)](#)



Volume Title

Proceedings of the 1st World Conference on Social and Humanities Research (W-SHARE 2021)

Series

Advances in Social Science, Education and Humanities Research

Publication Date

11 April 2022

ISBN

10.2991/assehr.k.220402.008

ISSN

2352-5398

DOI[10.2991/assehr.k.220402.008](https://doi.org/10.2991/assehr.k.220402.008) [How to use a DOI?](#)**Copyright**

© 2022 The Authors. Published by Atlantis Press SARL.

Open Access

This is an open access article distributed under the CC BY-NC 4.0 license.

Cite this article

ris

enw

bib

TY - CONF
AU - Tessa Eka Darmayanti
AU - Krismanto Kusbiantoro
AU - Cindrawaty Lesmana
AU - Roi Milyardi
AU - Irena Vanessa Gunawan
AU - Amanda Muliati
AU - Ferlina Sugata
PY - 2022
DA - 2022/04/11
TI - Spatial Experience Through Virtual Tour During Pandemic Covid-19
as A Cultural Resilience: Case Study - Pecinan Village, Jamblang,
Cirebon, Indonesia
BT - Proceedings of the 1st World Conference on Social and Humanities
Research (W-SHARE 2021)
PB - Atlantis Press
SP - 34

EP - 37
SN - 2352-5398
UR - <https://doi.org/10.2991/assehr.k.220402.008>
DO - 10.2991/assehr.k.220402.008
ID - Darmayanti2022
ER -



[+ download .ris](#)

[COPY TO CLIPBOARD](#)

Atlantis Press

Atlantis Press – now part of Springer Nature – is a professional publisher of scientific, technical & medical (STM) proceedings, journals and books. We offer world-class services, fast turnaround times and personalised communication. The proceedings and journals on our platform are Open Access and generate millions of downloads every month.

For more information, please contact us at: contact@atlantis-press.com

- ▶ PROCEEDINGS
- ▶ JOURNALS
- ▶ BOOKS
- ▶ POLICIES
- ▶ MANAGE COOKIES/DO NOT SELL MY INFO
- ▶ ABOUT
- ▶ NEWS
- ▶ CONTACT
- ▶ SEARCH

[Home](#) [Privacy Policy](#) [Terms of use](#)



Copyright © 2006-2023 Atlantis Press – now part of Springer Nature

Spatial Experience Through Virtual Tour During Pandemic Covid-19 as A Cultural Resilience: Case Study - Pecinan Village, Jamblang, Cirebon, Indonesia

Tessa Eka Darmayanti^{1,*}, Krismanto Kusbiantoro², Cindrawaty Lesmana³,
Roi Milyardi³, Irena Vanessa Gunawan¹, Amanda Muliati¹, Ferlina Sugata²

¹*Department of Interior Design, Faculty of Art and Design, Universitas Kristen Maranatha, Indonesia*

²*Department of Architecture, Faculty of Art and Design, Universitas Kristen Maranatha, Indonesia*

³*Department of Civil Engineering, Faculty of Engineering, Universitas Kristen Maranatha,*

**Corresponding author. Email: tessaeka82@gmail.com*

ABSTRACT

The article was formed from the virtual tour during the pandemic of COVID-19. The activity is part of a collaboration lecture between two universities based in Bandung, Indonesia, and Guanxi, China. The pandemic truly pushed several offline activities into online activities, including tours to historical sites. A virtual tour to historical Pecinan in Jamblang Cirebon becomes a solution to survive the new normal era. This strategy is automatically connected, reconnect, exchange, and expand people's experience and cultural knowledge in different places and disparate time frames. The research aims to give a perspective of spatial experience through virtual activity. This qualitative research uses a phenomenological approach to fulfill the objective because the technique is closely linked to space, experience, and perception in any media. The finding of this research reveals that pandemics will never close the possibility of being able to experience and appreciate the existence of heritage and cultural values in Pecinan, Jamblang. So that one of the learning processes keeps alive, one of the national identities not be lessened, and cultural resilience will be maintained.

Keywords: *Spatial experience, cultural resilience, virtual tour, pecinan Jamblang, phenomenology*

1. INTRODUCTION

The pandemic was triggered through the COVID-19 outbreak in December 2019 in Wuhan, China, and rapidly spread in many countries worldwide [1][2]. The virus spreads worldwide, with China, Italy, Spain, and the US being hit hardest. In March 2020, the World Health Organization declared the situation as a global health emergency (pandemic) [3], and in April 2020, more than 1 million people were infected, and more than 110,000 have died from the virus (www.who.int). All countries in the world are taking immediate action to prevent and control the spread of the virus, one of which is Indonesia. Covid 19 is not only a deadly virus but has a domino effect that is also terrible for every aspect of life. One of the Indonesian government policies is to implement the Large-Scale Social Restrictions policy. The implementation of the policy has triggered a decline in large-scale interaction and connectivity, one of which is about culture (kemenkopmk.go.id). However, the COVID-19 pandemic seems to drive cultural survival through online and virtual media. The media is like an

oasis because it can present experience spaces during disease outbreaks.

This article discusses culture in Pecinan (Chinatown) Jamblang, Cirebon, West Java related to resilience due to pandemics. Culture is perhaps the most neglected topic in the study of risk and resilience [4]. Both culture and resilience are slippery concepts. Culture is often coupled with context, and resilience relates to existing realities [5]. Thus, resilience has important moral, and social dimensions. A simple metaphor for understanding resilience is like a strong oak tree or bamboo that moves flexibly due to the wind or storm. The term resilience has two keyword names change and adapt because this term is understood as overcoming adverse experiences. Resilience also defined as ability to adapt in a changing condition and environment. Build resilience in culture is the way to create the long-term sustainability of the embodiment and existence of Pecinan Jamblang in Cirebon.

Promoting culture through human experience, which “offering” virtual tours can still present communities

(audience) the chance to show the historical embodiment and enhance the “online” experience. That activity possibly serves as a learning portal for audiences to understand the culture, arts, and history. This strategy also connects and gathers people “outside” the historical site. This virtual tour was recorded, and it will become a digital archive that will be useful in the future. Indirectly, it becomes part of the foundation of cultural resilience because digital archive is therefore viewed as a better way to maintain a historic sense of place in the future [6].

2. METHODS

This Qualitative study captures a phenomenon in the pandemic era that shifts conveying knowledge about cultural and historical places from an “offline” way to an “online” way. This study is important because it provides a different perspective about the spatial experience of the historical and cultural site known as Pecinan Jamblang, Cirebon, which create through the virtual medium that connects two countries, three universities, three places, and two different time zone. The activity probably looks usual, but the experience of space and the value of the knowledge gained to make this activity more contained.

Why was the site chosen? Based on history, Pecinan Jamblang was known as a center of trade and economy during Admiral Zheng He's expedition to Indonesia around 1415. The statement was supported by the Cirebon cultural expertise, Mustaqim Asteja, in an interview in 2021 that the online daily Cirebon Raya.Com recorded. He said that Jamblang was once a metropolitan city with a large river that many ships passed, but now it is deserted, and its prestige is fading. Based on the explanation above, the research questions were formed: How were spatial experiences about Pecinan Jamblang, Cirebon obtained and formed through virtual tours involving lecturers and students from two universities in different countries? To answer these questions, this study uses a phenomenological and narrative approach. Phenomenology is a way of investigating an area or object that allows us to see and collect the world itself, every world contained in the object of research. Discussion in phenomenology requires perception because it involves emotions towards objects. Phenomenology also involves awareness and experience of events to produce their experiences. Kusworo states in 2009 that phenomenology reflects the direct human experience that is carried out intensively or repeatedly related to an object [7].

3. RESULTS AND DISCUSSION

The concept of space is often used in daily life that creates its story and experience to whom within it. That space can greet in their way according to an individual who sees it [8]. Spatial experience is a subjective assessment that arises through visual perception [9]. Such

experiences can only occur through the activity of people in Peninan Jamblang, Cirebon, Indonesia, who took a live video and the audience in their respective places and times (Bandung, Indonesia, and Guangxi, China) (figure 1).

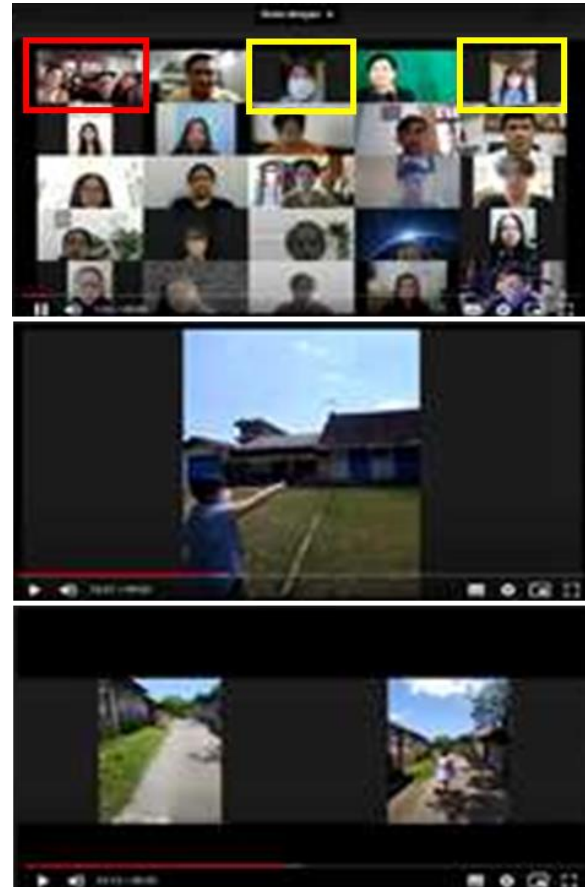


Figure 1 (red) The audience from China, (yellow, middle & bellow) Person in charge in the site - Pecinan Jamblang, and (other in the above picture) the audience from Bandung, Indonesia



Figure 2. Picture from Google Map and Other Documentation as a Support Sources in Virtual Tour.

Figure 2 present the other sources apart from the live broadcast from google Maps images and pre-existing documentation. This can expand the range of spatial audience experiences that are less clear from live

broadcasts. The online tour can accommodate non-physical (virtual) containers that create personal spatial experiences that are diffracted by space and time [10]. Currently, the state of the pandemic due to COVID-19 forces almost all activities to be carried out online to minimize mobility and crowds that are “tools” for the spread of the virus. The tour activities are generally carried out directly to the site. Nevertheless, recently is not possible, and virtual tours have become a strategy to deal with an important part of social change during the COVID-19 pandemic.

As we enter a space, the space enters us, and the experience is essentially exchange [11]

Juhani Pallasmaa's statement implies that when we enter a space and are involved with all the activities, it is possible to change us because it unconsciously influences each other then will provide experiences. The most memorable experience in virtual meetings was when the audience was “invited” to travel to Pecinan Jamblang using live video prepared by the person who standby by the site. That was like going through different spaces and times, all audiences visiting the same place, even though they may have different perceptions and interpretations because each person has different memories and imaginations of the object in question.

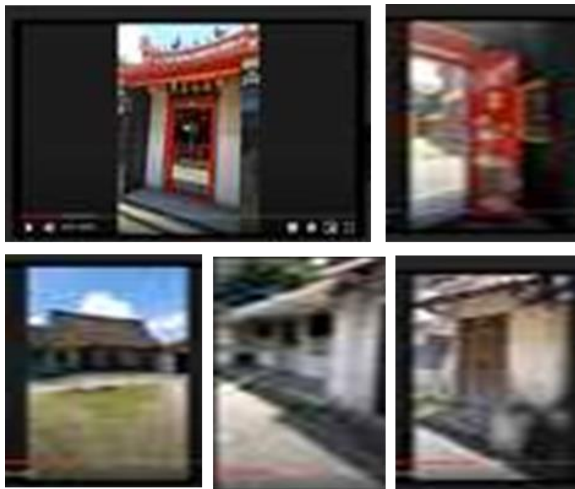


Figure 3. (above) Historical Temple & (bellow) Peranakan House in Pecinan Jamblang

From the virtual tour, viewers from both countries learned about various historical buildings in Jamblang Chinatown, such as temples and Peranakan houses (figure 3). In addition, through this tour, audiences also can get to know various cultures that influence the historical buildings in Jamblang Chinatown. Figure 4 shows some cultural influence from European-Dutch and Chinese. European culture can be seen in the paintings on the walls of the temple entrances, and Chinese culture is visible on the roofs and doors of the temple entrances. The same culture is also seen in the design of the Peranakan house.

Virtual tours can also convey the atmosphere of the Pecinan Jamblang to the audience, although they come from different places and times. Pallasmaa supports this statement, and he describes the atmosphere as the character of the built environment that is most quickly and widely felt and that causes the experience [11].



Figure 4. Chinese (left above) and European (right above) Cultural Details in Temple & Cultural Details in Peranakan Houses of Jamblang (bellow)

Spatial experience is also created and enriched through language differences. In this virtual tour, three languages are used as an introduction, Indonesian which is sometimes used between Indonesian lecturers to avoid misunderstanding of information, English which is used as communication between Indonesian and Chinese lecturers; and Mandarin which is used to communicate clearly to lecturers and students in China so that the message conveyed in Indonesian and English can be well received.

The virtual tour also provided information about Jamblang Peranakan houses' struggle as part of local culture. Most houses are abandoned and untreated well, exacerbated by the pandemic, causing less attention to the surrounding environment to historic buildings. The COVID-19 pandemic has indeed changed almost all aspects. However, experience from the activity of virtual tour could create cultural sustainability and resilience because experience engenders something stored and stay longer in memory.

4. CONCLUSION

Spatial experiences are acquired and shaped through various activities that occur and are experienced in various ways in virtual space.

Virtual spaces provide a unique environment where individuals or groups can continuously produce, record, share, access, and use information. In short, they are memory-forming tools that become the invisible value of cultural resilience. Cultural resilience is one of the determining factors that bind the resilience of a nation to remain intact. The state of the pandemic encourages various ways to stay afloat on various sides, including culture. Virtual activities can change the perspective of distance, time, and experience.

ACKNOWLEDGMENTS

This work was supported by the Heritage Revitalization Design Workshop of the Old City of Jamblang, West Java, Indonesia, as a collaborative project on heritage between Maranatha Christian University, Guangxi Arts University, and Guangxi University for Nationalities.

REFERENCES

- [1] M. Lipsitch, D. L. Swerdlow, and L. Finelli, "Defining the epidemiology of Covid-19—studies needed," *N. Engl. J. Med.*, vol. 382, no. 13, pp. 1194–1196, 2020.
- [2] F. Jiang, L. Deng, L. Zhang, Y. Cai, C. W. Cheung, and Z. Xia, "Review of the Clinical Characteristics of Coronavirus Disease 2019 (COVID-19)," *J. Gen. Intern. Med.*, vol. 35, no. 5, pp. 1545–1549, 2020, doi: 10.1007/s11606-020-05762-w.
- [3] J. De Vos, "The effect of COVID-19 and subsequent social distancing on travel behavior," *Transp. Res. Interdiscip. Perspect.*, vol. 5, p. 100121, 2020.
- [4] R. Feldman and S. Masalha, "The role of culture in moderating the links between early ecological risk and young children's adaptation," *Dev. Psychopathol.*, vol. 19, no. 1, pp. 1–21, 2007.
- [5] A. M. Almedom and D. Glandon, "Resilience is not the absence of PTSD any more than health is the absence of disease," *J. loss Trauma*, vol. 12, no. 2, pp. 127–143, 2007.
- [6] D. E. Beel *et al.*, "Cultural resilience: The production of rural community heritage, digital archives and the role of volunteers," *J. Rural Stud.*, vol. 54, pp. 459–468, 2017.
- [7] E. Kusworo, *Fenomenologi: Metodologi Penelitian Komunikasi*. Bandung: Widya Padjajaran, 2009.
- [8] T. E. Darmayanti and A. Bahauddin, "Understanding vernacularity through spatial experience in the Peranakan House Kidang Mas, Chinatown, Lasem, Indonesia," *ISVS E-journal*, vol. 7, no. 3, pp. 1–13, 2020.
- [9] L. S. Pamungkas, C. Meytasari, and H. Trieddiantoro, "Virtual Reality As A Spatial Experience For Architecture Design: A Study of Effectiveness for Architecture Students," in *SHS Web of Conferences*, 2018, vol. 41, p. 5005.
- [10] T. E. Darmayanti and A. Bahauddin, "Pengaruh perubahan sirkulasi terhadap fungsi ruang di rumah Peranakan, Kampung Babagan, Lasem," *ARTEKS J. Tek. Arsit.*, vol. 5, no. 2, pp. 265–276, 2020.
- [11] J. Pallasmaa, "Space, place, and atmosphere: Peripheral perception in existential experience," in *Lebenswelt*, 4(1), Birkhäuser, 2014, pp. 230–245.

Part of **SPRINGER NATURE**[PROCEEDINGS](#) | [JOURNALS](#) | [BOOKS](#)

Search

Series: [Advances in Social Science, Education and Humanities Research](#)

Proceedings of the 1st World Conference on Social and Humanities Research (W-SHARE 2021)

ARTICLES 

Search

[+ Advanced search](#)

SEARCH

68 articles

Proceedings Article

The Relationship of Achievement Motivation with Teacher Performance in the Implementation Teaching and Learning Process in Senior High Schools

Andi Padalia, Andi Nurochmah

The research aims to determine: 1) Find out the description of teacher achievement motivation, 2) find out teacher performance in the teaching and learning process implementation; 3) Find out the relationship between achievement motivation and teacher performance in the implementation teaching-learning...

[+ Article details](#)[+ Download article \(PDF\)](#)



Proceedings Article

The Elementary Education Assessment and Learning Integrated 21st Century-Computational Thinking Skills in Mathematics: Global Design Stage

Hisyam Ihsan, Fajar Arwadi, Sutamrin Sutamrin

This research aims to obtain the assessment models/designs and learning at the basic level of education integrated with computational thinking in web-based mathematics lessons/computers. The method used is design-based research to gain insight into computational thinking and encourage computational thinking...

[+ Article details](#)

[+ Download article \(PDF\)](#)

Proceedings Article

Value of Education in Malabot Tumpe in Batui Indigenous People of Banggai Regency

Karmila P. Lamadang, Mamat Supriatna

This study's purpose is to analyze analytically the educational value contained in Malabot Tumpe (the ceremony of sending the first maleo eggs in the dry season), from the Matindok kingdom of the Batui tribe Banggai Regency to the Banggai tribal kingdom in the Banggai Regency. Banggai Laut, Central Sulawesi...

[+ Article details](#)

[+ Download article \(PDF\)](#)

Proceedings Article

Tontila Dance in Saluan Tribe of Luwuk Banggai Regency of Central Sulawesi

Heriyati Yatim, Andi Padalia, Jamilah Jamilah

This research aims to find out: (1) how the background of the birth of Tontila Dance in the Saluan tribe in Luwuk Banggai Regency. (2) how to form the presentation of the Tontila dance to the Saluan tribe in Luwuk Banggai Regency. Concepts and theories about the background and form of dance presentation...

[+ Article details](#)

[+ Download article \(PDF\)](#)

Proceedings Article

Integration of Metal Materials and Semarang Batik Motifs into the Design of Tableware

Elliaty Djakaria, Dewi Isma Aryani

Technological progress goes hand in hand with the development of human civilization. One of the results of human civilization is tableware, namely coasters. This article will describe the design of coasters with the Semarang Batik motifs application, namely Warak Ngendog, as a result of acculturation...

[+ Article details](#)

[+ Download article \(PDF\)](#)

Proceedings Article

Application of a Scientific Approach to Improve Students' Creativity in Recycling Waste

Hikmawati Usman, Khaerunnisa Khaerunnisa, Andika Selasri

Cognitively competent children are not only able to think critically but also creatively. Student thinking abilities influence students' ability to solve problems in learning. This study describes students' creativity in recycling waste in subjects' students. The research was conducted at an Elementary...

[+ Article details](#)[+ Download article \(PDF\)](#)

Proceedings Article

Eco-pesantren Implementation Strategy Supports the Environmental Behavior of Islamic Boarding School Students in South Sulawesi

Moh. Ahsan S. Mandra, Rusli Ismail

Pesantren is a typical educational institution in Indonesia with a boarding school method that teaches in-depth Islamic knowledge. The purpose of the study was to determine the strategy for implementing the eco-pesantren program in South Sulawesi. The research method uses a quantitative approach with...

[+ Article details](#)[+ Download article \(PDF\)](#)

Proceedings Article

Spatial Experience Through Virtual Tour During Pandemic Covid-19 as A Cultural Resilience: Case Study - Pecinan Village, Jamblang, Cirebon, Indonesia

Tessa Eka Darmayanti, Krismanto Kusbiantoro, Cindrawaty Lesmana, Roi Milyardi, Irena Vanessa Gunawan, Amanda Muliati, Ferlina Sugata

The article was formed from the virtual tour during the pandemic of COVID-19. The activity is part of a collaboration lecture between two universities based in Bandung, Indonesia, and Guanxi, China. The pandemic truly pushed several offline activities into online activities, including tours to historical...

[+ Article details](#)[+ Download article \(PDF\)](#)

Proceedings Article



Series: [Advances in Social Science, Education and Humanities Research](#)

Proceedings of the 1st World Conference on Social and Humanities Research (W-SHARE 2021)

ORGANIZERS

Chair

Andi Anto Patak, Ph.D.

Universitas Negeri Makassar, Indonesia

Organizing Committee

Dr. Anas Arfandi

Universitas Negeri Makassar, Indonesia

Dr. techn. Andi Abidah

Universitas Negeri Makassar, Indonesia

Muh. Miftah Fauzan, M.Pd

Universitas Negeri Makassar, Indonesia

Technical Committee

Dr. Suarlin

Universitas Negeri Makassar, Indonesia



Abdul Malik, M.Si., Ph.D.

Universitas Negeri Makassar, Indonesia

Amirullah Abduh, Ph.D.

Universitas Negeri Makassar, Indonesia

Rudi Salam, M.Pd.

Universitas Negeri Makassar, Indonesia

Hartoto, M.Pd.,

Universitas Negeri Makassar, Indonesia

Nur Abdiansyah, M.Sn.

Universitas Negeri Makassar, Indonesia, Indonesia

Dr. Wijdan Rajh Hamzah Al-Kraity

Altoosi University College, Iraq

Dr. Duratul Ain Binti Tholibon

Universiti Teknologi Mara Cawangan Pahang, Malaysia

Dr. Afzal Sayed Munna

University of Wales, Trinity Saint David, United Kingdom

Dr. Taha Shabbir

University of Arts, Science & Technology, Pakistan

Editors

Prof. Yasser A. Djawad, Ph.D.

Universitas Negeri Makassar, Indonesia

Abdul Hafid Hasim, M.T.

Universitas Negeri Makassar, Indonesia

Atlantis Press

Atlantis Press – now part of Springer Nature – is a professional publisher of scientific, technical & medical (STM) proceedings, journals and books. We offer world-class services, fast turnaround times and personalised communication. The proceedings and journals on our platform are Open Access and generate millions of downloads every month.

For more information, please contact us at: contact@atlantis-press.com

- ▶ PROCEEDINGS
- ▶ JOURNALS
- ▶ BOOKS
- ▶ POLICIES
- ▶ MANAGE COOKIES/DO NOT SELL MY INFO
- ▶ ABOUT
- ▶ NEWS
- ▶ CONTACT
- ▶ SEARCH

[Home](#) [Privacy Policy](#) [Terms of use](#)



Copyright © 2006-2023 Atlantis Press – now part of Springer Nature