

# LAMPIRAN

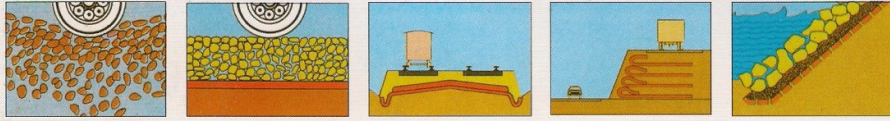
# PANCA TETRASA

Our *Pioneering Spirit*, multiply *the value* of your soft soil



**BIMA Geoteks®**

Woven Geotextile made in Indonesia



## BIMA Geoteks® is your solution for the soft clay problems.

**BIMA Geoteks®** consists of long chain synthetic polymer, composed of U.V. stabilized polypropylene. They shall be formed into a stable network such that the filaments retain their dimensional stability to each other.



Various **BIMA Geoteks®** applications :

- Unpaved road
- Railway track
- Runway
- Parking area
- Retaining structure
- Reclamation
- Breakwater
- Dam, etc



構造物に使用

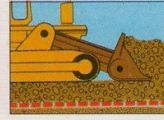
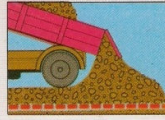
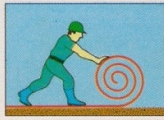
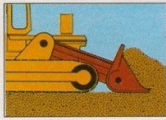
- 柔らかい道
- 固い道
- 鉄道
- 滑走路
- 駐車場
- 土砂崩れ防止壁
- 埋め立て
- 浸食予防壁
- 防波堤
- ダム その他



Major benefits derived from **BIMA Geoteks®** :

- Abolish the subgrade replacement
- Reducing the filling material
- Improve the load carrying capability
- Stabilizing the subgrade rise
- Reducing the rating of the unpaved road
- Increasing the service life of the construction
- More economical, etc.

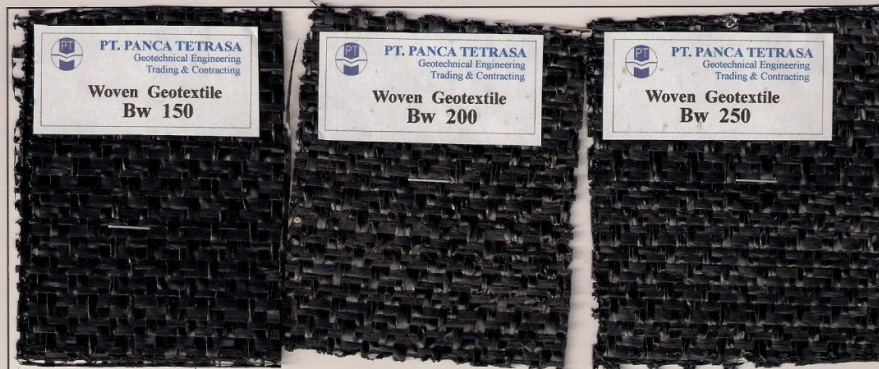




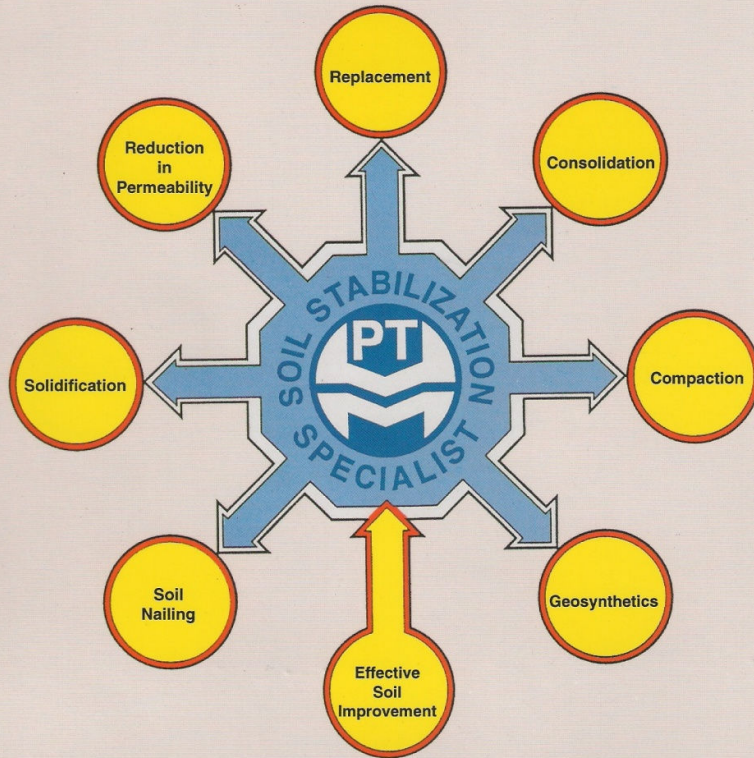
### Technical Specification of Woven Geotextile **BIMA Geoteks**<sup>®</sup>

<b>BIMA Geoteks</b> <sup>®</sup>		TEST STANDARD	UNIT	BW 150	BW 200	BW 250	
PHYSICAL	Weight	ASTM D 1910	gr/m <sup>2</sup>	150	200	250	
	Thickness	ASTM D 1777	mm	0.50	0.80	1.10	
	Colour	----	----	Black	Black	Black	
MECHANICAL & HYDRAULIC	Strip Tensile Strength	Wrap	ASTM D 1682	kN/m	25	40	55
		Weft			25	40	55
	Elongation at Maximum Load	ASTM D 1682	%	20	20	24	
	Trapezoidal Tear Strength	ASTM D 4533	N	550	700	900	
	Puncture Resistance	ASTM D 4833	N	225	350	450	
	Water Permeability at 100 mm Waterhead	BS 6906	l/m <sup>2</sup> /sec	24	23	21	
	Effective Opening Size (O <sub>90</sub> )	NEN 5168	µm	280	280	270	
BIOLOGICAL & CHEMICAL	Bacteria and Other Biological Effect	----	----	nil	nil	nil	
	Soil Acidity Effect	----	----	nil	nil	nil	
	Soil Alkalinity Effect	----	----	nil	nil	nil	
	U.V. Light Effect	----	----	U.V. Stabilized	U.V. Stabilized	U.V. Stabilized	
PACKAGING	Roll Width	----	m	3.80	3.80	3.80	
	Roll Length	----	m	200	200	200	
	Area	----	m <sup>2</sup>	760	760	760	
	Roll Diameter (approx.)	----	m	0.40	0.45	0.50	
	Roll Weight (approx.)	----	kg	117	155	195	

### Product Sample of Woven Geotextile **BIMA Geoteks**<sup>®</sup>



**We Serve Our Clients Best !**



Further Information Please Contact :



**PT. PANCA TETRASA**

Geotechnical Engineering  
Trading & Contracting

Jl. Musi No.5, Jakarta 10150 - Indonesia  
Phone : (021) 381 0589, 384 2110, 384 2117, 385 1382  
Fax : (021) 381 4071  
E-mail : pancatetrasa@centrin.net.id