

Table of contents

Volume 1783

2021

◀ Previous issue Next issue ▶

Annual Conference on Science and Technology Research (ACOSTER) 2020, 20-21 June 2020, Medan, Indonesia

Accepted papers received: 20 January 2021
Published online: 12 February 2021

[Open all abstracts](#)

JOURNAL LINKS

- [Journal home](#)
- [Information for organizers](#)
- [Information for authors](#)
- [Search for published proceedings](#)
- [Contact us](#)
- [Reprint services from Curran Associates](#)



This site uses cookies. By continuing to use this site you agree to our use of cookies. To find out more, see our [Privacy and Cookies](#) policy. ✕

OPEN ACCESS 011001

[Preface Annual Conference on Science and Technology Research \(ACOSTER\) 2020](#)

[+ Open abstract](#) [View article](#) [PDF](#)

OPEN ACCESS 011002

[Peer review declaration](#)

[+ Open abstract](#) [View article](#) [PDF](#)

Papers

OPEN ACCESS 012001

[Effect of Different Solvents On The Phytochemical Compounds of *Sargassum* sp. From Yogyakarta and East Nusa Tenggara](#)

Dheasy Herawati and Pratiwi Pudjiastuti

[+ Open abstract](#) [View article](#) [PDF](#)

OPEN ACCESS 012002

[Radical catcher activities free of methanol fruit leather and pomegranate seeds \(*punica granatum. L*\)](#)

Vina N Van Harling

[+ Open abstract](#) [View article](#) [PDF](#)

OPEN ACCESS 012003

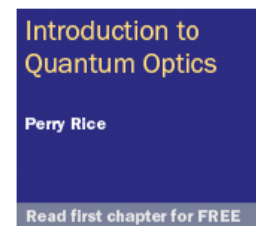
[Concentration Effect of Ethanol Extract *Pinus merkusii* Leaves Litter on *Zea mays* L. Seed Germination](#)

Mita Dewi Retnoningrum and Mohammad Arfi Setiawan

[+ Open abstract](#) [View article](#) [PDF](#)

OPEN ACCESS 012004

[Identifications of Polyphenols and \$\alpha\$ -Amylase Inhibitory Activity of Multi herbal Formulation:](#)



Cocoa Beans (*Theobroma cacao*), Buni (*Antiaesma bunius L. Spreng*) and Cinnamons (*Cinnamomum cassia*)

Muhammad Yusuf, Pirman, UA Nur Fitriani, Ibrahim Amri and A Ita Juwita

[+ Open abstract](#) [View article](#) [PDF](#)

OPEN ACCESS

012005

The Profile of Delay Erasure Time and Imaging Plate Sizes to Dark Noise Evaluation in Carestream Computed Radiography System

Agung Nugroho Setiawan, Ney Da Onney, Marichatul Jannah and Agustina Dwi Prastanti

[+ Open abstract](#) [View article](#) [PDF](#)

OPEN ACCESS

012006

Development of Macromedia Flash-Based Mathematics Learning for Elementary School Students

Maulana Rais Mahendra, Supriansyah and Zulherman

[+ Open abstract](#) [View article](#) [PDF](#)

OPEN ACCESS

012007

Augmented reality application: What are the constraints and perceptions of the students during the covid 19 pandemic's 3D geometry learning process?

Sudirman, Poppy Yaniawati, Mellawaty and Rully Indrawan

[+ Open abstract](#) [View article](#) [PDF](#)

OPEN ACCESS

012008

Forecasting Unemployment in North Sumatra Using Double Exponential Smoothing Method

Havid Syafwan, Mahdhivan Syafwan, Elvathna Syafwan, Aulia Fitrul Hadi and Pristiyanilicia Putri

[+ Open abstract](#) [View article](#) [PDF](#)

OPEN ACCESS

012009

Fountains Height Measurement Accuracy With Mamdani Fuzzy Inference System Algorithm

Retno Devita, Ruri Hartika Zain and Ipriadi

[+ Open abstract](#) [View article](#) [PDF](#)

OPEN ACCESS

012010

Employee Performance Analysis using Analytical Hierarchy Process and Weighted Product Combinations Algorithm

Raja Tama Andri Agus, Muhammad Ardiansyah Sembiring, Mustika Fitri Larasati Sibuea, Mardalius and Andri Nata

[+ Open abstract](#) [View article](#) [PDF](#)

OPEN ACCESS

012011

Decision Support System Using Fuzzy Logic Method of Tahani Model for Student Selection

Rizaldi, Dewi Anggraeni, Arridha Zikra Syah, Abdul Kholiq and Raja Tama Andri Agus

[+ Open abstract](#) [View article](#) [PDF](#)

OPEN ACCESS

012012

Application of data mining techniques using the K-Means Method on Unmet Need of Health Services by Province in Indonesia

W Wahidin, M Mugihartadi, Tri Hasanah Bimastari Aviani, Heny Pratiwi, Yusup Indra Wijaya, A Andie, Agus Perdana Windarto and Ari Waluyo

[+ Open abstract](#) [View article](#) [PDF](#)

OPEN ACCESS

012013

The Implementation of Fuzzy C-Means to Categorize Poverty Data in Riau Province

The Implementation of Fuzzy-C Means to Categorize Poverty Data in Riau Province

Mustakim, Hadi Eka Saputa, Mutasir, Nuryanti and Salmiah

[+ Open abstract](#) [View article](#) [PDF](#)

OPEN ACCESS

012014

Analysis of Data Mining in the Group of Water Pollution Areas using the K-Means Method in Indonesia

Hendra Jatnika, Miftahul Huda, Ria Rizki Amelia, Melda Agnes Manuhutu, Agus Perdana Windarto, Pipin Sumantrie and Ari Waluyo

[+ Open abstract](#) [View article](#) [PDF](#)

OPEN ACCESS

012015

Application of the Simple Multi Attribute Rating Technique (SMART) Method in the selection of thrush medicine products based on consumers

Mulyanto Darmowiyono, Wakhid Yuliyanto, Kardianto Indra Purnomo, Wenny Marlina, Heny Pratiwi, Agus Perdana Windarto and Harma Oktafia Lingga Wijaya

[+ Open abstract](#) [View article](#) [PDF](#)

OPEN ACCESS

012016

Clustering of Public Opinion on Natural Disasters in Indonesia Using DBSCAN and K-Medoids Algorithms

Mustakim, Muhammad Zakiy Fauzi, Mustafa, Assyari Abdullah and Rohayati

[+ Open abstract](#) [View article](#) [PDF](#)

OPEN ACCESS

012017

Analysis of Decision Support System with Analytical Hierarchy Process Method

Ahmad Zaelani Adnan, Moh. Hidayatul Holili, Bisma Indrawan, Sri Wahyuningsih, Sri Heneng Prasastono, Agus Perdana Windarto and Ari Waluyo

[+ Open abstract](#) [View article](#) [PDF](#)

OPEN ACCESS

012018

The Implementation of Probabilistic Neural Network Algorithm for Classification of Family Hope Program in Pekanbaru City

Rice Novita, Qumfa Anzir, Mustakim, Nur Alhidayatillah and Julis suriani

[+ Open abstract](#) [View article](#) [PDF](#)

OPEN ACCESS

012019

Application of Analytical Hierarchy Process Method for SQM on Customer Satisfaction

Ramayani Yusuf, Fenny Damayanti, P Purnomo, Aep Tata Suryana, Dewi Kartikaningsih, Agus Perdana Windarto and Ari Waluyo

[+ Open abstract](#) [View article](#) [PDF](#)

OPEN ACCESS

012020

The Classification Status of River Water Quality in Riau Province Using Modified K-Nearest Neighbor Algorithm with STORET Modeling and Water Pollution Index

Mustakim, Rosdina, Dian Ramadhani, M. Afdal and Medyantiwi Rahmawita

[+ Open abstract](#) [View article](#) [PDF](#)

OPEN ACCESS

012021

University Level Management Toward Industrial Revolution 4.0 using COBIT 5 Framework

Seri Hartati, Amir Syamsuadi and Diki Arisandi

[+ Open abstract](#) [View article](#) [PDF](#)

OPEN ACCESS 012022

Development of Radio Frequency Identification (RFID) in the Campus Parking System based on Microcontroller

Rahmad Hidayat, Rushendra, Salamatul Afiyah, Rosyidin Sufyani and Farhan Adani

[+ Open abstract](#) [View article](#) [PDF](#)

OPEN ACCESS 012023

QoS Analysis on Campus Building Network Infrastructure with WDS Technique using PCQ Method

Givy Devira Ramady, Griffani Megiyanto Rahmatullah, Martin Clinton Tosima Manullang, Andry Fajar Zulkarnain, Rosyidin Sufyani and Rahmad Hidayat

[+ Open abstract](#) [View article](#) [PDF](#)

OPEN ACCESS 012024

Technology of Auto Teller Machine Interface: Accessibility for Bank Customer with Visual Impairments

Priyo Subekti, Hanny Hafiar and Yanti Setianti

[+ Open abstract](#) [View article](#) [PDF](#)

OPEN ACCESS 012025

Implementation of PROMETHEE Method for Employee Performance Assessment System

Leni Natalia Zulita, Tengku Mohd Diansyah and Rachmat Aulia

[+ Open abstract](#) [View article](#) [PDF](#)

OPEN ACCESS 012026

System Development Management E-School as a Students Information Media

Febrianty, Hendra Hadiwijaya and D. Tri Octafian

[+ Open abstract](#) [View article](#) [PDF](#)

OPEN ACCESS 012027

COVID-19 Cases and Deaths in Southeast Asia Clustering using K-Means Algorithm

Juniar Hutagalung, Ni Luh Wiwik Sri Rahayu Ginantra, Gita Widi Bhawika, Wayan Gede Suka Parwita, Anjar Wanto and Pawer Darasa Panjaitan

[+ Open abstract](#) [View article](#) [PDF](#)

OPEN ACCESS 012028

Sieve Diagram For Data Exploration of Instagram Usage Habit Obtained From Indonesia Questioner's Sample

Reko Syarif Hidayatullah, Wahyu Nur Cholifah, Erlin Windia Ambarsari, Nunu Kustian and Siti Julaeha

[+ Open abstract](#) [View article](#) [PDF](#)

OPEN ACCESS 012029

Why is the Application Programming Interface the backbone of a Smart City?

Fitria Wahyuni and Rachma Fitriati

[+ Open abstract](#) [View article](#) [PDF](#)

OPEN ACCESS 012030

Prediction System of Facility Maintenance using Weight Product (WP) Algorithm

Sofika Enggari, Larissa Navia Rani, Hari Marfalino and Deri Marse Putra

[+ Open abstract](#) [View article](#) [PDF](#)

OPEN ACCESS 012031

Consumption Analysis of Caffeine Using Mobile Application

I Nyoman Yudi Anggara Wijaya, I Made Artana, Nyoman Ayu Nila Dewi, A.A. Istri Ita Paramitha and Ni Made Estiyanti

[+ Open abstract](#) [View article](#) [PDF](#)

OPEN ACCESS 012032

Mask R-CNN for Indonesian Shadow Puppet Recognition and Classification

Ida Bagus Kresna Sudiarmika, Made Artana, Nengah Widya Utami, Made Adi Paramartha Putra and Eka Grana Aristyana Dewi

[+ Open abstract](#) [View article](#) [PDF](#)

OPEN ACCESS 012033

Rainbow Coloring of Three New Graph Classes

Ketut Queena Fredlina, A.N.M. Salman, I Gede Putu Krisna Julihara, Komang Tri Werthi and Ni Luh Putu Ning Septyarini Putri Astawa

[+ Open abstract](#) [View article](#) [PDF](#)

OPEN ACCESS 012034

Optimization of Unsupervised Learning in Machine Learning

Hidayatus Sibyan, Wildan Suharso, Edi Suharto, Melda Agnes Manuhutu and Agus Perdana Windarto

[+ Open abstract](#) [View article](#) [PDF](#)

OPEN ACCESS 012035

Utilization of the field of data mining in mapping the area of the Human Development Index (HDI) in Indonesia

Adi Rahmat, H Hardi, Febrizal Alfarasy Syam, Z Zamzami, Bayu Febriadi and Agus Perdana Windarto

[+ Open abstract](#) [View article](#) [PDF](#)

OPEN ACCESS 012036

Application of Backpropagation Algorithm for Handwriting Recognition

Sustin Farlinda, Muhammad Yunus, Mudafiq Riyan Pratama, Bakhtiyar Hadi Prakoso, Angga Rahagiyanto, Dyah Susilowati, Ni Gusti Ayu Dasriani, Lukmanul Hakim and Khairil Anam

[+ Open abstract](#) [View article](#) [PDF](#)

OPEN ACCESS 012037

A Technology Acceptance Framework Inside the Indonesian Online Learning Platform

Yuda Dian Harja, Rita Ambarwati and Gogor Arif Handiwibowo

[+ Open abstract](#) [View article](#) [PDF](#)

OPEN ACCESS 012038

Implementation of TOPSIS Algorithm for Selection of Prominent Student Class

Victor Marudut Mulia Siregar, Sahat Sonang, Arifin Tua Purba, Heru Sugara and Nancy Florida Siagian

[+ Open abstract](#) [View article](#) [PDF](#)

OPEN ACCESS 012039

The Mamdani Fuzzy Logic Engineering Analysis for Determining Weather Forecast

Aris Munandar Harahap, Saib Suwilo and Rahmat Widia Sembiring

[+ Open abstract](#) [View article](#) [PDF](#)

OPEN ACCESS 012040

Automobile Insurance Processing using Deep Convolutional Networks

R. Rajkumar, Ronhit Neema, N. Chaitanyanathreddy, G. Varun and K. Govinda

[+ Open abstract](#) [View article](#) [PDF](#)

OPEN ACCESS 012041

Login Security Using One Time Password (OTP) Application with Encryption Algorithm Performance

Dwi Ely Kurniawan, Mohd Iqbal, John Friadi, Fendi Hidayat and Ririt Dwiputri Permatasari

+ Open abstract  View article  PDF

OPEN ACCESS 012042

Evaluating the effectiveness of information security based on the calculation of information entropy

Akmaral Imanbayeva, Yerlan Tursynbek, Rabiga Syzdykova and Aigerim Mukhamedova

+ Open abstract  View article  PDF

OPEN ACCESS 012043

Integrating Social Commerce Constructs into Mobile Application Service; A Structural Equation Model

Muhammad Ashoer, Imaduddin Murdifin, Jafar Basalamah, Ajmal As'ad and Andika Pramukti

+ Open abstract  View article  PDF

OPEN ACCESS 012044

Remote Control Target Tracking Using GPS / INS-IMU

R Syafruddin, Givy Devira Ramady, YS Herawati, Andrew Ghea Mahardika, Ninik Sri Lestari and Rahmad Hidayat

+ Open abstract  View article  PDF

OPEN ACCESS 012045

Comparing Freeman Chain Code 4 Adjacency Algorithm and LZMA Algorithm in Binary Image Compression

Resdiansyah, Justin Darmawan, Adrian Hartanto Wijaya, Lukman Hakim and Hendy Tannady

+ Open abstract  View article  PDF

OPEN ACCESS 012046

Web-Based Online Study Plan Card Application Design

Ninik Sri Lestari, Givy Devira Ramadi, Andrew Ghea Mahardika, Herawati and Herlina

+ Open abstract  View article  PDF

OPEN ACCESS 012047

Image Processing Identifacation for Indonesian Cake Cuisine using CNN Classification Technique

Dian Ade Kurnia, Andi Setiawan, Dita Rizki Amalia, Rita Wahyuni Arifin and Didik Setiyadi

+ Open abstract  View article  PDF

OPEN ACCESS 012048

Floor Cleaning Robot Control System with Android Based Voice Command

Ruri Ashari Dalimunthe, Maulana Dwi Sena and William Ramdhan

+ Open abstract  View article  PDF

OPEN ACCESS 012049

Comparison of Knowledge-Based Reasoning Methods to Measure the Effectiveness of Diagnostic Results

Puji Sari Ramadhan, Marsono, Juniar Hutagalung and Yohanni Syahra

+ Open abstract  View article  PDF

OPEN ACCESS 012050

Venn Versus Relation Diagram Models For Database Relation in SQL Command Line

Nunu Kustian, Siti Julaeha, Dudi Parulian, Noni Selvia and Erlin Windia Ambarsari

[+ Open abstract](#) [View article](#) [PDF](#)

OPEN ACCESS

012051

Developing Smart Campus Readiness Instrument Based on Pagliaro's Smart Campus Model and Smart City Council's Readiness Framework

Wisnu Hidayat, Mokhamad Hendayun, Ashwin Sasongko Sastrosubroto, Rahmad Hidayat and Samun Haris

[+ Open abstract](#) [View article](#) [PDF](#)

OPEN ACCESS

012052

MSME Development Strategy for Providing Information through Central Banking Microsite Web Based

Deni Danial Kesa and Diaz Pranita

[+ Open abstract](#) [View article](#) [PDF](#)

OPEN ACCESS

012053

Application of Certainty Factor Method to Identify Pests in Crystal Jamboo Plants

Hendry Fonda, Yulanda, Muhammad Ikhsanudin, Muhardi and Yuda Irawan

[+ Open abstract](#) [View article](#) [PDF](#)

OPEN ACCESS

012054

Increasing the Higher of Think through Moodle Application: The Effects of Learning Procees in the Higher Education System

Elihami Elihami, Musdalifah Musdalifah and Hasan Hasan

[+ Open abstract](#) [View article](#) [PDF](#)

OPEN ACCESS

012055

Tensile Strength and Absorption Analysis of Hybrid High Quality Concrete Using Cement Replacement Additives Substitution, Aggregate Substitution and Nanomaterial Iron Ore

A Dwinta, TB Aulia and M Hasan

[+ Open abstract](#) [View article](#) [PDF](#)

OPEN ACCESS

012056

Current development of geopolymer cement with nanosilica and cellulose nanocrystals

Cut Rahmawati, Sri Aprilia, Taufiq Saidi and Teuku Budi Aulia

[+ Open abstract](#) [View article](#) [PDF](#)

OPEN ACCESS

012057

Pole Placement Based State Feedback for DC Motor Position Control

Iswanto, Nia Maharani Raharja, Alfian Ma'arif, Yogi Ramadhan and Phisca Aditya Rosyady

[+ Open abstract](#) [View article](#) [PDF](#)

OPEN ACCESS

012058

Solar-Cell Implementation for Supporting Tourist Facilities and Tourism Promotion Media

H. Hendri, H. Awal and Mardison

[+ Open abstract](#) [View article](#) [PDF](#)

OPEN ACCESS

012059

Voltages Transient Analysis in Electric Grounding Systems

R Syafruddin, Hetty Fadriani, Salamatul Afiyah, Givy Devira Ramady and Rahmad Hidayat

[+ Open abstract](#) [View article](#) [PDF](#)

OPEN ACCESS 012060

3 Phase Ac Servomotor Switching System

R Syafruddin, Rosyidin Sufyani, Salamatul Afiyah, Mohammad Chusnul Azhari and Givy Devira Ramady

[+ Open abstract](#) [View article](#) [PDF](#)

OPEN ACCESS 012061

Dropped voltage analysis on 20 KV distribution network

M Tri Wahyu Sinaga, Y Wahyu Pambudi, Desy and S Suherman

[+ Open abstract](#) [View article](#) [PDF](#)

OPEN ACCESS 012062

Event Based Surveillance using WiMAX

Suherman, Marwan Al-Akaidi, Al-Khowarizmi and Yulianta Siregar

[+ Open abstract](#) [View article](#) [PDF](#)

OPEN ACCESS 012063

Impact encryption algorithm used in three pass protocol for securing WiMAX link

Suherman

[+ Open abstract](#) [View article](#) [PDF](#)

OPEN ACCESS 012064

Impact humidity monitoring based watering to planted tomatoes

N Mubarakah, U Kalsum, S Suherman, Soeharwinto and A H Rambe

[+ Open abstract](#) [View article](#) [PDF](#)

OPEN ACCESS 012065

Impact of queue tree and layer 7 filtering combination to bandwidth management in 802.3 Network

Aulia Ichsan, Suherman, B Nababan Erna and Marwan Al-Akaidi

[+ Open abstract](#) [View article](#) [PDF](#)

OPEN ACCESS 012066

Intermittent versus continuous social media exposure for energy consumption and human eye health

S Suherman, Yulianta Siregar and A-Khowarizmi

[+ Open abstract](#) [View article](#) [PDF](#)

OPEN ACCESS 012067

The LCL filter design for three phase DC-AC voltage converter

S Hasan, Suherman, D P Saragi, Y Siregar and M Al-Akaidi

[+ Open abstract](#) [View article](#) [PDF](#)

OPEN ACCESS 012068

Video streaming application with post-decoding concealment technique

Suherman, Marwan Al-Akaidi and Yulianta Siregar

[+ Open abstract](#) [View article](#) [PDF](#)

OPEN ACCESS 012069

Loading Capacity Calculation of Integrated Precast Slab and Column Panel Using Cold-formed Steel

Sutanto Muliawan, Anis Saggaff, Tahir Mahmood, Saloma, Muhammad Firdaus and KM Aminuddin

[+ Open abstract](#) [View article](#) [PDF](#)

OPEN ACCESS 012070

Study the electrical, thermal behaviour of (glass/jute) fibre hybrid composite material

Zahra K. Hamdan, Ahmed Ali Farhan Ogaili, Zaineb w. metteb and Fadhel Abbas Abdulla

[+ Open abstract](#) [View article](#) [PDF](#)

OPEN ACCESS 012071

The Effect of River Meanders on River Morphology

Mangambit Juliandar, Budi Nuryono, Yakub Siahaan, Didik Trimo and Andrew Ghea Mahardika

[+ Open abstract](#) [View article](#) [PDF](#)

OPEN ACCESS 012072

Analysis of Groundwater Quality in Dusun Salam and Randuacir, Argomulyo District

N Vina, Van Harling and Markus Dwiyanto Tobi

[+ Open abstract](#) [View article](#) [PDF](#)

OPEN ACCESS 012073

Compressive Strength, Permeability and Porosity Analysis of Pervious Concrete by Variation of Aggregate and Compacting Method

Nico Sanjaya, Saloma, Hanafiah, Ika Juliantina and Siti Aisyah Nurjannah

[+ Open abstract](#) [View article](#) [PDF](#)

OPEN ACCESS 012074

Prototype Design of Wireless Electric Energy Transmission System and Distance Electric Recording Record System Using PZEM004T and NRF24L01 Module

Markus Dwiyanto Tobi and Vina N Van Harling

[+ Open abstract](#) [View article](#) [PDF](#)

OPEN ACCESS 012075

Transient Voltage Programming in Electric Power Grounding System

R Syafruddin, YS Herawati, Givy Devira Ramady, Wisnu Hidayat, Ninik Sri Lestari and Anung

[+ Open abstract](#) [View article](#) [PDF](#)

OPEN ACCESS 012076

Development of Automatic Oil Refueling System Model based on Internet of Things

Givy Devira Ramady, Ninik Sri Lestari, Andrew Ghea Mahardika, Hetty Fadriani, Purwadi Budi Santoso and Rahmad Hidayat

[+ Open abstract](#) [View article](#) [PDF](#)

OPEN ACCESS 012077

Physical and Mechanical Properties of Self-Compacting Concrete (SCC) with Pineapple Leaf Fibre and Polypropylene

Hanoora Sarah Anindita Hendrian, Saloma, Hanafiah, Maulid M. Iqbal and Ika Juliantina

[+ Open abstract](#) [View article](#) [PDF](#)

OPEN ACCESS 012078

Quality Control of Frame Production Using DMAIC Method in Plastic PP Corrugated Box Manufacturer

Hendy Tannady and Edi Purwanto

[+ Open abstract](#) [View article](#) [PDF](#)

OPEN ACCESS 012079

Effect of temperature variation on the fluctuation of a sessile bubble rising in a stagnant medium

A M E D Faik and A A Mohammed

[+ Open abstract](#) [View article](#) [PDF](#)

OPEN ACCESS

012080

Practically Examining the Effect of Thermal Loads on Curved Tubes Made of Different Natural Composite Materials

Riyadh Fakher Jassim and Fadhel Abbas Abdulla

[+ Open abstract](#) [View article](#) [PDF](#)

OPEN ACCESS

012081

Compressive Strength and Microstructural of Palm Oil Fuel Ash-Fly Ash Based Geopolymer Mortar

Muhammad Dwi Caesar Humaedi, Saloma, Hanafiah and Maulid M. Iqbal

[+ Open abstract](#) [View article](#) [PDF](#)

OPEN ACCESS

012082

Evaluate the Performance of *Jalan Otista Bandung* with on-Street Parking

Hetty Fadriani, Salamatul Afiyah, Yakob Liklikwatil, Samun Haris, Iman Hidayat and Rahmad Hidayat

[+ Open abstract](#) [View article](#) [PDF](#)

OPEN ACCESS

012083

BCM PIN Read Conversion Application on Intelligent key Vehicle registration on Android Based

Ahmad Sujana, Andrew Ghea Mahardika, Herawati, Muntiyono, Salamatul Afiyah and Rahmad Hidayat

[+ Open abstract](#) [View article](#) [PDF](#)

OPEN ACCESS

012084

Transmission Coefficient Testing on Sweatbatching Model with Artificial Reef Brick-1 Armor

Andrew Ghea Mahardika and Givy Devira Ramady

[+ Open abstract](#) [View article](#) [PDF](#)

OPEN ACCESS

012085

Optimization of Normalized Least Mean Square Algorithm of Smart Antenna Beamforming for Interference Mitigation

Rahmad Hidayat, Givy Devira Ramady, Ninik Sri Lestari, Andrew Ghea Mahardika and Hetty Fadriani

[+ Open abstract](#) [View article](#) [PDF](#)

OPEN ACCESS

012086

The Relationship Between the Electromagnetic Field Amplitude and its Frequency in a Single Photon

Stephanus Ivan Goenawan

[+ Open abstract](#) [View article](#) [PDF](#)

OPEN ACCESS

012087

Role of using some Hybrid Nano-Fillers on the Strength and Creep Resistance of Fiberglass/Epoxy Composit

Raad Abd AL-Hassan, Ehsan Sabah Al-Ameen and Layla M. Nassir

[+ Open abstract](#) [View article](#) [PDF](#)

OPEN ACCESS

012088

Compared with Angle -ply and Cross-ply Natural Fiber Orientation Pipe under Thermal Load

Fadhel Abbas abdulla and Sura Thaar Bader

[+ Open abstract](#) [View article](#) [PDF](#)

OPEN ACCESS 012089

Key Factors Affecting the Application of Building Information Management (BIM) in Management of High-Rise Building Construction Volume

Thu Anh Nguyen, Phong Thanh Nguyen and Sy Tien Do

[+ Open abstract](#) [View article](#) [PDF](#)

OPEN ACCESS 012090

Flood Problem in Pekanbaru City Analysis Using GIS Approach

Husnul Kausarian, Adi Suryadi, Susilo, Batara and Josaphat Tetuko Sri Sumantyo

[+ Open abstract](#) [View article](#) [PDF](#)

OPEN ACCESS 012091

Cracks Evaluation of Reinforced Concrete Structure: A Review

Ahmad Zaki, Lukman Murdiansyah and Yessi Jusman

[+ Open abstract](#) [View article](#) [PDF](#)

OPEN ACCESS 012092

Comparison of Malaria Parasite Image Segmentation Algorithm Using Thresholding and Watershed Method

Yessi Jusman, Anindita Puspardini, Anna Nur Nazilah Chamim and Siti Nurul Aqmariah Mohd Kanafiah

[+ Open abstract](#) [View article](#) [PDF](#)

OPEN ACCESS 012093

Prototype Plate Bending Tool 1 mm Size in the Process of Making a Fence with an Anthropometric Approach in the Pasuruan Regency Welding Workshop

Subchan Asy'ari, Leo Virgi Setyawan, Abdul Wahid, Miftahul Huda and Achmad Misbah

[+ Open abstract](#) [View article](#) [PDF](#)

OPEN ACCESS 012094

Electronic Equipment Control System for Households by using Android Based on IoT (Internet of Things)

Yuda Irawan and Refni Wahyuni

[+ Open abstract](#) [View article](#) [PDF](#)

OPEN ACCESS 012095

Remote Sensing Analysis of Lineaments using Multidirectional Shaded Relief from Digital Elevation Model (DEM) in Olele Area, Gorontalo

A G Abduh, F C A Usman, W M Tampoy and I N Manyoe

[+ Open abstract](#) [View article](#) [PDF](#)

OPEN ACCESS 012096

Reproving the basic principles of fuzzy sets for the decisions

Mahyuddin K M Nasution

[+ Open abstract](#) [View article](#) [PDF](#)

OPEN ACCESS 012097

Anti Fuzzy Line Graphs

Toto Nusantara, Desi Rahmadani, Asmianto, Yuliana Trisanti and Abdullah Bin Gani

[+ Open abstract](#) [View article](#) [PDF](#)

OPEN ACCESS 012098

On Vertice and Edge Regular Anti Fuzzy Graphs

Toto Nusantara, Desi Rahmadani, Mochammad Hafiih, Elita Dia Cahyanti and Abdullah Bin Gani

[+ Open abstract](#) [View article](#) [PDF](#)

OPEN ACCESS

012099

From recursive to dynamic: An algorithm for dealing with a problem

Mahyuddin K M Nasution, J T Tarigan and I Jaya

[+ Open abstract](#) [View article](#) [PDF](#)

OPEN ACCESS

012100

Model of Truck Travel Timeliness Based on Driver Environment Psychology and Technical Factor: A Warp.PLS-SEM Approach

D Yuniar, L Djakfar, A Wicaksono and A Efendi

[+ Open abstract](#) [View article](#) [PDF](#)

OPEN ACCESS

012101

Exploring the computational thinking of our pre-service mathematics teachers in prepare of lesson plan

Swasti Maharani, Toto Nusantara, Abdur Rahman As'ari and Abd Qohar

[+ Open abstract](#) [View article](#) [PDF](#)

OPEN ACCESS

012102

Reflective Thinking of Mathematics Prospective Teachers' for Problem Solving

Muhammad Noor Kholid, Sekar Telasih, Lingga Nico Pradana and Swasti Maharani

[+ Open abstract](#) [View article](#) [PDF](#)

OPEN ACCESS

012103

Improving Students' Mathematical Argumentation Skill Through Infusion Learning Strategy

Lia Budi Trisanti and Toto Nusantara

[+ Open abstract](#) [View article](#) [PDF](#)

OPEN ACCESS

012104

Comic Mathematics: A bridge to understanding the concept of social arithmetic for secondary school students

Nedia Rose, Farid Gunadi, Rosyadi, Nandang and Sudirman

[+ Open abstract](#) [View article](#) [PDF](#)

OPEN ACCESS

012105

Analysis of Reflective Student Analogy Reasoning in Solving Geometry Problems

Diyah Ayu Rizki Pradita, Maswar Maswar, Mohammad Tohir, Junaidi Junaidi and Dwi Nur Hadiyansah

[+ Open abstract](#) [View article](#) [PDF](#)

OPEN ACCESS

012106

DNA Amplification of Methanogenic Bacteria from The Sewage of Coconut Water by Specific Primer 16S rRNA and Specific Methanogenic Gene

Ardi Kapahang, Maria Bintang and Dedy D Solihin

[+ Open abstract](#) [View article](#) [PDF](#)

OPEN ACCESS

012107

Analysis of Intensity, Duration, and Frequency Rain Daily of Java Island Using Mononobe Method

Faradiba

[+ Open abstract](#) [View article](#) [PDF](#)

OPEN ACCESS 012108

Problem Based Learning using Open Educational Resources to enhance Higher Order Thinking Skills in Physics Learning

Dwi Sulisworo, Fakhrunisyah and Khusnul Basriyah

[+ Open abstract](#) [View article](#) [PDF](#)

OPEN ACCESS 012109

The role of information technology on the online learning success based on self-regulated learning data

Dwi Sulisworo, Ika Maryani and Dian Artha Kusumaningtyas

[+ Open abstract](#) [View article](#) [PDF](#)

OPEN ACCESS 012110

Effectiveness of E-Learning Approach to Contextual Teaching and Learning in Improving Students 'Ability

Zulfi Azhar, Suparno, Kasman Rukun, Jalius Jama, Hansi Effendi and Mukhlidi Muskhir

[+ Open abstract](#) [View article](#) [PDF](#)

OPEN ACCESS 012111

Gamification in Learning using Quizizz Application as Assessment Tools

Wiwini Handoko, Eva Mizkat, Auliana Nasution, Hambali and Juna Eska

[+ Open abstract](#) [View article](#) [PDF](#)

OPEN ACCESS 012112

Face to Face Learning vs Blended Learning vs Online Learning (Student Perception of Learning)

Awal Kurnia Putra Nasution, Andika Hariyanto Surbakti, Rahmanita Zakaria, Sungkawati Kardi Wahyuningsih and Leni Agustina Daulay

[+ Open abstract](#) [View article](#) [PDF](#)

OPEN ACCESS 012113

The development of blended media learning through google classroom to support teaching and learning in IAIN Takengon

Leni Agustina Daulay, Rahmanita Zakaria, Andika Hariyanto Surbakti, Awal Kurnia Putra Nasution and Sungkawati Kardi Wahyuningsih

[+ Open abstract](#) [View article](#) [PDF](#)

OPEN ACCESS 012114

Development of Smart Card Media for Elementary Students

Cita Audia, Ika Yatri, Aslam, Sri Mawani and Zulherman

[+ Open abstract](#) [View article](#) [PDF](#)

OPEN ACCESS 012115

The Use of the Powtoon Application in Learning Videos for Elementary School Students

Melly Siska Pratiwi, Zulherman and Gufron Amirullah

[+ Open abstract](#) [View article](#) [PDF](#)

OPEN ACCESS 012116

Animated Video Media Based on Adobe After Effects (AEF) Application: An Empirical Study for Elementary School Students

Nova Dwi Rahayu, Zulherman and Ika Yatri

[+ Open abstract](#) [View article](#) [PDF](#)

OPEN ACCESS 012117

Exploring the online learning response to predict students' satisfaction

Dwi Sulisworo, Yosi Wulandari, Muh Saeful Effendi and Mazni Alias

[+ Open abstract](#) [View article](#) [PDF](#)

OPEN ACCESS 012118

Examining Resource Based Learning and Individual Learning Capabilities in Todays' Scenario

Usha Sadasivan, Bhuvaneswari Balachander and S. Vijayalakshmi

[+ Open abstract](#) [View article](#) [PDF](#)

OPEN ACCESS 012119

Technical Guidance for Learning Management in a Video Conference with the Zoom and Youtube application in the Covid-19 Pandemic Era

Agusriandi Agusriandi, Elihami Elihami, Mutmainnah Mutmainnah and Yunus Busa

[+ Open abstract](#) [View article](#) [PDF](#)

OPEN ACCESS 012120

Building The Management System: Designs on the use of Blended Learning Environment

Musdalifah Musdalifah, Baharuddin Baharuddin, Umiyati Jabri, Elihami Elihami and Mustakim Mustakim

[+ Open abstract](#) [View article](#) [PDF](#)

OPEN ACCESS 012121

Kahoot Application for Elementary School Students: Implementations of Learning Process from Distance during Pandemic period of COVID 19

Mahfira Djannah, Zulherman and Nurafni

[+ Open abstract](#) [View article](#) [PDF](#)

OPEN ACCESS 012122

Factor Affecting E-Learning User Acceptance: A Case Study of AULA

Faried Effendy, Octa Dwi Kurniawati and Guntung Priambada

[+ Open abstract](#) [View article](#) [PDF](#)

OPEN ACCESS 012123

Teacher's intention to use online learning; an extended technology acceptance model (TAM) investigation

Ngabiyanto, Ahmad Nurkhin, Widiyanto, Iwan Hardi Saputro and Al Mamnukhin Kholid

[+ Open abstract](#) [View article](#) [PDF](#)

OPEN ACCESS 012124

Application of Learning Using Online Media During the New Normal

Jasiah, Arif Rakhman, Ardian Arifin, Riana Safitri, Indra Perdana and M. Khaidir Abdul Wahab

[+ Open abstract](#) [View article](#) [PDF](#)

OPEN ACCESS 012125

Analytical Effectiveness using Adobe Flash in Learning Energy Source at Primary School

Rima Rostyawati, Zulherman and Desvian Bandarsyah

[+ Open abstract](#) [View article](#) [PDF](#)

OPEN ACCESS 012126

LMS-Google Classroom Digital Platform: Impact on the Critical Thinking Ability, Self-Concept, and Mathematics Anxiety of Pre-Service Mathematics Teachers During the Covid-19 Pandemic in Indramayu, Indonesia

Mellawaty and Mochammad Taufan

[+ Open abstract](#)

[View article](#)

[PDF](#)

OPEN ACCESS

012127

Media Information Communication and Technology (ICT) Development Strategy in Education Learning

Achmad Yusuf, Munif, Mochamad Hasyim, Asrul Anan and Muhammad Nur Hadi

[+ Open abstract](#)

[View article](#)

[PDF](#)

OPEN ACCESS

012128

e-Learning Development on Basic Chemical Law Materials in Senior High School (SMA/MA) to Improve High Order Thinking Skill Ability

Trayda Afrianti and Rahadian Zainul

[+ Open abstract](#)

[View article](#)

[PDF](#)

IOPscience

[Journals](#)

[Books](#)

[About IOPscience](#)

[Contact us](#)

[Developing countries access](#)

[IOP Publishing open access policy](#)

IOP Publishing

© Copyright 2021 IOP Publishing

[Terms & conditions](#)

[Disclaimer](#)

[Privacy & cookie policy](#)

This site uses cookies. By continuing to use this site you agree to our use of cookies.

PAPER • OPEN ACCESS

Remote Control Target Tracking Using GPS / INS-IMU

To cite this article: R Syafruddin *et al* 2021 *J. Phys.: Conf. Ser.* **1783** 012044

View the [article online](#) for updates and enhancements.



IOP | ebooks™

Bringing together innovative digital publishing with leading authors from the global scientific community.

Start exploring the collection—download the first chapter of every title for free.

Remote Control Target Tracking Using GPS / INS-IMU

Syafruddin R^{1*}, Givy Devira Ramady¹, Herawati YS², Andrew Ghea Mahardika¹, Ninik Sri Lestari¹, Rahmad Hidayat¹

¹Sekolah Tinggi Teknologi Mandala, Bandung, Indonesia

²Universitas Kristen Maranatha, Bandung, Indonesia

*syafruddin@yahoo.com

Abstract. Background of this research is the need for the remote control to direct a bullet to a known target in advance of the coordinates, with an initial velocity, and initial momentum of the bullet flying the farthest possible. Method of developing remote control target tracking uses GPS sensor devices. By using a radio receiver and CPU, GPS data can be received where there are some data that can be used directly and some are processed first to be used, including position data directly sent to the base as control host and plotted on maps, altitude data or altitude is directly used to control the altitude, the direction of the bullet is calculated using the position data every second from the GPS and compared with the GPS direction data attached to the bullet, used to correct the direction of the bullet, where the data that is executed is the delta heading for calculation with the heading GPS. Remote control target tracking using GPS worked fine, according to the target coordinates as reference. Emphasis on research is how to calculate the real-time server heading, and compare it with the heading from a compass sensor mounted on the bullet.

1. Introduction

The background of this research is the need for the remote control to direct a multi-functional bullet to a known target in advance of the GPS/INS-IMU(Global Positioning System/Inertial Navigation System- Inertial Measurement Units) start coordinates (latitude, longitude) [1][2][3][4], the required distance for radio remote control ranges from 50. Up to 60 km, the propulsion energy from the bullet is obtained from the initial ejection energy, and the range of the bullet to fly is expected to be between 20 to 30 km with a travel time of 20 to 30 minutes [5][6][7][8]. The initial velocity of the bullet is around Mach 2, comparable to $2 \times 300 \text{ m / s} = 600 \text{ m / s}$, the energy of the bullet to fly is only with impulse energy or initial momentum, without any additional thrust from the bullet while flying. For this reason, maintenance of the momentum energy of the bullet is needed so that it has a maximum range. Note: 1 match = $1225.04 \text{ km / h} = 295.0464000003 \text{ m / s}$. The target position is input via the keyboard.

2. Method

This research method uses bullets that have been made and have met QC rules as bullets pass aerodynamic and mechanical flight tests, while this research only focuses on research to develop remote control target tracking using GPS / INS-IMU. By using a radio receiver and CPU, GPS / INS-IMU data can be received where there is some data that can be used directly or processed first to be



Content from this work may be used under the terms of the [Creative Commons Attribution 3.0 licence](https://creativecommons.org/licenses/by/3.0/). Any further distribution of this work must maintain attribution to the author(s) and the title of the work, journal citation and DOI.

used, among others, the position data in is sent directly to the base as a control host and plotted on a map, altitude data or direct altitude used to control the altitude, the direction/heading of the bullet is calculated using the position data every second from the GPS / INS-IMU and compared with the direction / heading data GPS / INS-IMU attached to the bullet, used to correct the direction of the bullet where the data at execution is the delta heading for calculation with the heading GPS / INS-IMU. The data retrieval process is available every second from the GPS / INS-IMU, but the retrieval process for control is according to the processing time carried out by the CPU, considering that controlling mechanics is certainly not as fast as the speed of electronic sensor signals, so a lot of real-time GPS / INS-IMU data is not used in the process bullet control. The main tools needed: a pair of transparent radio control with RS232C protocol, server CPU, CPU host, GPS / INS-IMU radio receiver + compass + 3 D sensor with CPU + RS232C protocol, 1 geared dc servomotor wing, 4 geared dc servomotor fin. The host has full authority, to turn off the power geared dc servomotor and tune the target if deemed necessary [9][10][11]][12].

3. Results And Discussion

3.1 Results

The following figure shows the results of research and carrier of bullets at :

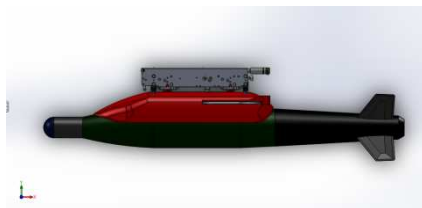


Figure 1. Bullet clamping



Figure 2. Bullet clamping



Figure 3. Bullet release



Figure 4. Bullet flying

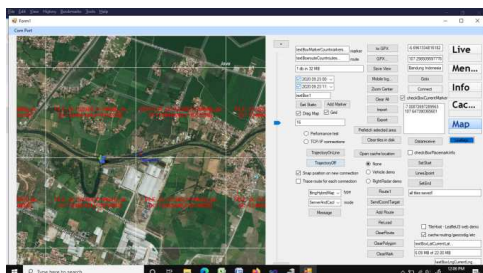


Figure 5. Target Tracking dashboard

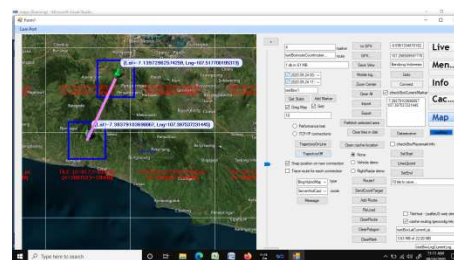


Figure 6. A distance of about 20 km



Figure 7. A distance of about 20 km zoom

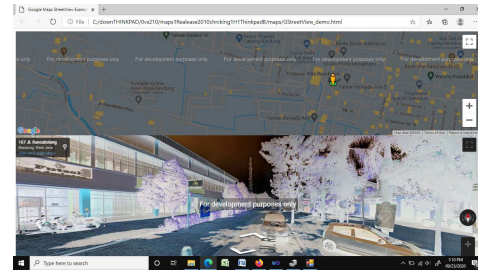


Figure 8. Target and details



Figure 9. Sukhoi SU24 carrier for bullet



Figure 10. F16 fighting carrier for bullet

According to of figure 6. is initial coordinates (south latitude, east longitude) (-7.35974291982731, 107.492980957031), target coordinates (south latitude, east longitude) (-6.76280647497146, 107.968139648438), host coordinates (south latitude, east longitude) (-7.25349605006953, 107.893981933594) and bullet server coordinates according to with (latitude, longitude) real-time of bullets.

Emphasis on research is how to calculate the real-time server heading, and compare it with the heading from a compass sensor mounted on the bullet[13] |[14].

3.2 Discussion

Discussion, if the bullet assumes QC passed, the success rate of control is largely determined by the calculation of headings on the server, assuming the headings on the server are from the sensor device at al: compass + 3 D sensor, radio receiver GPS / INS-IMU sensor in the manufacture, where it is believed to function properly, because the device has been on the global market for quite a long time, with various kinds of Frequency Ask Questions(FAQs) that have been obtained. Geared dc servomotor control greatly determines the accuracy of the bullet reaching the target because the GPS / INS-IMU + compass + 3 D accuracy sensor is quite accurate up to a radius of 1-meter accuracy.

4. Conclusions and Suggestions

4.1 Conclusions

Conclusions on research developed the real-time remote control target tracking using GPS / ins-imu is running in function normally.

4.2 Suggestions

The time remote control target tracking using GPS/ins-imu is easy to handled and used for that research hoping any industry should be applied to this remote control target tracking using GPS / ins-imu.

References

- [1] R. Sufyani, R. Syafruddin, G. D. Ramady, A. G. Mahardika, and D. Nataliana, "Kontrol Motor AC 3 Fasa Pada Peluncur Peluru Kendali," in *Prosiding Seminar Nasional Teknoka*, 2019, vol. 4, pp. I126–I132.
- [2] R. Syafruddin, Hetty Fadriani, Salamatul Afiyah, Givy Devira Ramady, Rahmad Hidayat, "Voltages Transient Analysis in Electric Grounding Systems".
- [3] S. SYAFRUDIN and A. PRATAMA, "Analisa Kandungan Harmonisa Pada Motor Ac 3 Phasa 0, 12 Kw Terkendali Inverter 3 Phasa," *J. Online Sekol. Tinggi Teknol. Mandala*, vol. 13, no. 1, pp. 31–37, 2018.
- [4] R. Syafrudin and A. H. A. Rachman, "Analisis Total Harmonik Distorsi Pada Panel Acpdb Akibat Beban Non Linear," *J. Online Sekol. Tinggi Teknol. Mandala*, vol. 13, no. 2, pp. 33–44, 2018.
- [5] R. Syafruddin, H. Fadriani, and D. Nataliana, "Pengembangan Prototipe Sistem Kontrol Pada Transmitter Peluru Kendali," *J. Online Sekol. Tinggi Teknol. Mandala*, vol. 14, no. 1, 2019.
- [6] G. K. Sukandi, R. Syafruddin, and D. Nataliana, "Pengembangan Prototipe Sistem Kontrol Pada Reseiper Peluru Kendali," *J. Online Sekol. Tinggi Teknol. Mandala*, vol. 14, no. 1, pp. 63–71, 2019.
- [7] R. Hidayat, Rushendra, and E. Agustina, "Digital beamforming of smart antenna in millimeterwave communication," in *IEEE Broadband Communication, Wireless Sensors and Powering (BCWSP)*, 2017.
- [8] D. Nataliana, R. Syafruddin, G. D. Ramady, Y. Liklikwatil, and A. G. Mahardika, "Servo Control for Missile System," in *Journal of Physics: Conference Series*, 2019, vol. 1424, no. 1, p. 12040.
- [9] G. D. Ramady and R. G. Wowiling, "Analisa Prediksi Laju Kendaraan Menggunakan Metode Linear Regresion Sebagai Indikator Tingkat Kemacetan," *J. Online Sekol. Tinggi Teknol. Mandala*, vol. 12, no. 2, pp. 22–28, 2017.
- [10] R. Hidayat, Syafruddin, S. Santoso, G. K. Sukandi, and H. S. Winahyu, "Smart key implementation for BTS gate door based on the internet of things," in *The 1st International Conference on Computer Science and Engineering Technology (Muria Kudus University)*, 2018.
- [11] R. Hidayat, H. S. Winangun, N. S. Lestari, and G. D. Ramady, "Development of BTS Site Smart Key Based on Internet of Things," in *2019 International Seminar on Application for Technology of Information and Communication (iSemantic)*, 2019, pp. 507–512.
- [12] R. Syafruddin, Rosyidin Sufyani, Salamatul Afiyah, Mohammad Chusnul Azhari, Givy Devira Ramady, "3 Phase Ac Servomotor Switching System".
- [13] G. D. Ramady, "Bluetooth beacon battery monitoring system using LabView," *Online J. Mandala Coll. Technol.*, vol. 13, no. 2, pp. 45–50, 2018.
- [14] R. Syafruddin, G. D. Ramady, R. Hidayat, H. Fadriani, and D. Nataliana, "Locking Target on Missile System," in *Journal of Physics: Conference Series*, 2019, vol. 1424, no. 1, p. 12039.