

## Table of contents

### Volume 1764

2021

[◀ Previous issue](#)   [Next issue ▶](#)

#### The 1st Paris Van Java International Seminar on Computer, Science, Engineering, and Technology (PVJ\_ISComSET), 15-16 July 2020, Tasikmalaya, Indonesia

Accepted papers received: 07 January 2021

Published online: 24 February 2021

[Open all abstracts](#)

## JOURNAL LINKS

[Journal home](#)

[Information for organizers](#)

[Information for authors](#)

[Search for published proceedings](#)

[Contact us](#)

[Reprint services from Curran Associates](#)



This site uses cookies. By continuing to use this site you agree to our use of cookies. To find out more, see our [Privacy and Cookies](#) policy.

**OPEN ACCESS** 011001

#### 1<sup>st</sup> Paris Van Java International Seminar on Computer, Science, Engineering and Technology (PVJ ISComSET) 2020

[+ Open abstract](#)   [View article](#)   [PDF](#)

**OPEN ACCESS** 011002

#### Peer review declaration

[+ Open abstract](#)   [View article](#)   [PDF](#)

## Chemical physics and physical chemistry

**OPEN ACCESS** 012001

#### Temperature Effects on Plasma Li-heparin and Transaminase Activity in Children Blood with Tetralogy of Fallot

F Fadhillah, I Rahmawati, N Anggraeni and S A Riyadi

[+ Open abstract](#)   [View article](#)   [PDF](#)

**OPEN ACCESS** 012002

#### Optimization of Polyethylene Glycol Concentration as an Agglutination Potentiator for Examination of Blood Types of Dry Blood Sample

R Handriani, G M Warouw and A Oktari

[+ Open abstract](#)   [View article](#)   [PDF](#)

**OPEN ACCESS** 012003

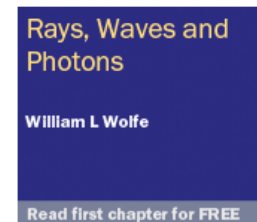
#### Stability Test of Colouring Agent from Pericarpium of Red Dragon Fruit (*Hylocereus Polyrhizus*) Extract in Laboratory Diagnostic of Intestinal Nematode Eggs Preparation

H. Syafrullah, Y. Supriatin, E. Yuliani and N. Aurora

[+ Open abstract](#)   [View article](#)   [PDF](#)

**OPEN ACCESS** 012004

#### Effect of ...



Evaluation of Rosehip (*Hibiscus sabdariffa* L.) Calyx Extract Stability for Intestinal Nematode Egg Staining

N Vanawati, A Oktari and TY Febriani

[+ Open abstract](#) [View article](#) [PDF](#)

OPEN ACCESS 012005

Differences of Bio (Chemical) Characterization of Garlic and Black garlic on Antibacterial and Antioxidant Activities

Lia Siti Halimah and Khomaini Hasan

[+ Open abstract](#) [View article](#) [PDF](#)

OPEN ACCESS 012006

The Relationship of Self-Efficacy with Adherence in Restricting Fluid Intake in Middle Adult Hemodialysis Patients

N Gartika, E Setiawati and Y Hidayat

[+ Open abstract](#) [View article](#) [PDF](#)

OPEN ACCESS 012007

Optimum Combination of Alphamangostin-Dihydroartemisinin in Vitro as Antimalaria

S Tjahjani, D Syafruddin and R Tjokropranoto

[+ Open abstract](#) [View article](#) [PDF](#)

OPEN ACCESS 012008

The variation of ethanol concentration and kombucha characterization on several incubation periods

Nisa Ihsani, Nelis Hernahadini and Muhammad Fauzi

[+ Open abstract](#) [View article](#) [PDF](#)

OPEN ACCESS 012009

Antioxidant Activity Of 70% Ethanol Extract Combination Of Kemangi Leaf (*Ocimum Americanum* Linn) and Binahong Leaf (*Anredera cordifolia* (Ten.) Steenis) Using DPPH

Herson Cahaya Himawan, Achmad Fauzi Isa and Dena Sapira Wiharja

[+ Open abstract](#) [View article](#) [PDF](#)

OPEN ACCESS 012010

Analysis of Drug Effectiveness and Efficiency of Use of Amlodipine-Captopril Combination Compared to Amlodipine-Valsartan in the X Hospital Patients of Bogor

Ferry Effendi, Sri Septiani and Leny Fitri Lubis

[+ Open abstract](#) [View article](#) [PDF](#)

OPEN ACCESS 012011

The Best Pasteurization Method in Reducing the Amount of Bacteria in Cow's Milk on People Dairy Farm

E N Nawangsih, II Rahmat, L S Halimah and D N Hidayat

[+ Open abstract](#) [View article](#) [PDF](#)

OPEN ACCESS 012012

Comparison of Drug Induced Hepatotoxicity Incident of Fixed-Dose Combination and Separate Formulations Regimen for Pulmonary Tuberculosis Treatment in Hospital Sukabumi

Silvi Nurafni, Novita Sari and Feni Mulyani

[+ Open abstract](#) [View article](#) [PDF](#)

OPEN ACCESS 012013

Antioxidant Activities from Two Varieties of Pear Peel Extracts using DPPH and CUPRAC

## Methods

V M Patricia and F N Syaputri

[+ Open abstract](#) [View article](#) [PDF](#)

---

### OPEN ACCESS

012014

#### Potency of Deep Euteutic Solvent as an Alternative Solvent on Pretreatment Process of Lignocellulosic Biomass: Review

Triyani Sumiati and Herman Suryadi

[+ Open abstract](#) [View article](#) [PDF](#)

---

### OPEN ACCESS

012015

#### Differences the Effects of Tuak Dayak and Tuak Aren on the number of Leydig cells and seminiferous tubule thickness

Usu Sius, Elisabeth Wahyu Savitri and Sisilia

[+ Open abstract](#) [View article](#) [PDF](#)

---

### OPEN ACCESS

012016

#### Optimization Concentration Control Cell Coombs (CCC) for Validity Tests on Crossmatching Examination

A. Oktari, R. Handriani and S. S. Musbihah

[+ Open abstract](#) [View article](#) [PDF](#)

---

### OPEN ACCESS

012017

#### Optimization Sonication Time and Dilution Factor in Determining the Concentration of Endotoxin Challenge Vial with Kinetic Turbidimetric Method

F Novi, S Yati, E Siska and A G Agie

[+ Open abstract](#) [View article](#) [PDF](#)

---

### OPEN ACCESS

012018

#### Effect of Ethanolic Extract Terong Belanda (*Solanum betaceum Cav.*) Peels of Antioxidant Activity by In Vitro

Riana Putri Rahmawati, Eko Retnowati and Ridyasari Kamela Devi

[+ Open abstract](#) [View article](#) [PDF](#)

---

### OPEN ACCESS

012019

#### Protection of Pegagan (*Centella asiatica*) Extract Through Hsp60 and Bax Expression on Stunting Model Zebrafish Larvae (*Danio rerio*) By Rotenone Inducted

Aida Ratna Wijayanti, Annisa Ridlayanti and Husnul Khotimah Muljohadi Ali

[+ Open abstract](#) [View article](#) [PDF](#)

---

### OPEN ACCESS

012020

#### The Solvent Effect of Hand sanitizer Formulation from Pecut Kuda (*Stachytarpheta jamaicensis* [L] Vahl) extract

S L Ramayani, OH , R S Hastuti, G V Hapsari, B T Prabandaru and D Widiyarini

[+ Open abstract](#) [View article](#) [PDF](#)

---

### OPEN ACCESS

012021

#### The Formulation and Physical Evaluation of Emulgel the Kalakai (*Stenochlaena Palustris* Bedd) Roots Ethanol Extract As a Sunscreen

Risqika Yuliatantri Paramawidhita, Rabiatul Adawiyah and Agustinawati Umaternate

[+ Open abstract](#) [View article](#) [PDF](#)

---

### OPEN ACCESS

012022

#### Simplex Lattice Design Analysis for Optimizing the Senakatan Extract (*Achyranthes aspera*)

## Simplex Lattice Design Analysis for Optimizing the Silyketum Latex (*Acrydium asperu*) production

Zaenal Fanani, Endang Setyowati and Ria Etikasari

[+ Open abstract](#) [View article](#) [PDF](#)

OPEN ACCESS

012023

### Effect of Boiling Time on Content of The Total Flavonoid of Kitolod (*Isotoma longiflora* (L.) C. Presl.)

Muchson Arrosyid, Choiril Hana Mustofa, Sutaryono and Alifiasri Praptiwi Rohmah

[+ Open abstract](#) [View article](#) [PDF](#)

OPEN ACCESS

012024

### Test of Antibacterial Activity 70% Ethanol Extract of Seeds Black Pepper (*Piper Nigrum* L) Against Bacteria *Escherichia Coli* Atcc 25922

Arina Zulfah Primananda, Laksmi Anggun and Rika Murhayati

[+ Open abstract](#) [View article](#) [PDF](#)

OPEN ACCESS

012025

### Test Of Analgesic And Antiinflammation Effect Of Ethanol 70% Extract Red Gedi Leaves (*Abelmoschus manihot* (L.) Medik.) From Palu On White Rat (*Rattus novergicus*)

A Nur and B Tjiroso

[+ Open abstract](#) [View article](#) [PDF](#)

OPEN ACCESS

012026

### In Vitro Evaluation of The Inhibitory Power of *Trichoderma harzianum* Against Pathogens that Cause Anthracnose in Chili

Sutarman, A Miftahurrohmat, IR Nurmallasari and AE Prihatinnigrum

[+ Open abstract](#) [View article](#) [PDF](#)

OPEN ACCESS

012027

### Stomata as a Differentiator of *Nepenthes* Type in North Sumatera

Nurmaini Ginting, Melvariani Syari Batubara, Abubakar, Muhammad Darwis and Fatma Suryani Harahap

[+ Open abstract](#) [View article](#) [PDF](#)

OPEN ACCESS

012028

### Isolation Bacteria Producing $\alpha$ -Amylase from Black Soldier Fly larvae (*Hermetia illucens*) L.

Luthfia Hastiani Muharram, Nelis Hernahadini and Muhammad Fauzi

[+ Open abstract](#) [View article](#) [PDF](#)

OPEN ACCESS

012029

### Improving plastic degradation by increasing the thermostability of a whole cell biocatalyst with LC-cutinase activity

Maelita Ramdani Moeis and Muhammad Farhan Maulana

[+ Open abstract](#) [View article](#) [PDF](#)

OPEN ACCESS

012030

### Method validation of As, Cd, Cr, Cu, Mn, Ni, Se, and Zn metals in Citarum River sediment using Inductively Coupled Plasma – Optical Emission Spectroscopy (ICP-OES)

T A Koesmawati, S Tanuwidjaja and A Nurachman

[+ Open abstract](#) [View article](#) [PDF](#)

OPEN ACCESS

012031

### The Use of Ethanol as an Alternative Solvent to Replace 2-Propanol in the Determination of Total Acid Number in Lubricant by Potentiometric Titration



OPEN ACCESS

012032

The Proportion of Moringa and Cassava Leaves on the Chemical and Sensory Properties of Chicken Nuggets

S A Prayitno and A R Rahim

OPEN ACCESS

012033

Antioxidant Activity and Total Phenolic Compounds of Arabica and Robusta Coffee at Different Roasting Levels

Umar Hafidz Asy'ari Hasbullah and dan Rini Umiyati

OPEN ACCESS

012034

Optimization Process In The Synthesis of Stannous Chloride ( $\text{SnCl}_2$ ) by Redox Method In The Context of Downstream Tin Derivative Product

Nurul Wulandari, A S Wismogroho, W B Widayatno, M I Amal and D Y Kusuma

OPEN ACCESS

012035

Analysis Of Organoleptic And Coliform Value In Fresh Mackerel (*Rastrelliger Sp.*) Fish In Tpi Sorong City

Sukmawati Sukmawati, Iksan Badaruddin, Nurul Kusuma Dewi, Nurbaity Situmorang, Mahfut Mahfut and Fery Mustapa

## Computational science

OPEN ACCESS

012036

The Change of Fruit Supply Chain in Response to Covid-19 Pandemic in West Java, Indonesia (Case Study of Anto Wijaya Fruit)

Agustina Widi, Erin Diana Sari and Siti Jahroh

OPEN ACCESS

012037

Business Development Strategy Through Value Creation Analysis in Automotive E-Commerce Platform (Case Study: XYZ Platform)

Maria Jacklyn Brilyani Putri Patty, Popong Nurhayati and Fuad Wahdan Muhibuddin

OPEN ACCESS

012038

Proposed a New Sustainable CSR Model Canvas for Effectiveness and Evaluation of Current CSR Programs (Case Study: PD PAL Jaya)

Aqira Pakuanzahra, Noer Azam Achsani and Asadudin Abdullah

OPEN ACCESS

012039

Re-Food: Digital Platform-based Innovation Solutions for National Food Waste Problems

Rafi Yoga Pramana, Achmad Fadillah and Arief Daryanto

## Computer Science

OPEN ACCESS

012040

Hybrid Algorithm as alternative method for optimization, a combination Genetic Algorithm and Particle Swarm Optimization

Taufan Mahardhika

[+ Open abstract](#)

[View article](#)

[PDF](#)

OPEN ACCESS

012041

On the numerical solution of Burgers-Fisher equation by the Strang Splitting Method

D. A. Hamzah and M. C. Aprianto

[+ Open abstract](#)

[View article](#)

[PDF](#)

OPEN ACCESS

012042

Implementation of Mathematics Learning-Assisted Cabri 3D Software to Improve Spatial Ability of High School Students on Three Dimensional Geometry

R Yulardi, A Mahpudin and A Rosyid

[+ Open abstract](#)

[View article](#)

[PDF](#)

OPEN ACCESS

012043

Lean Six Sigma Analyst in Packing House Lembang Agriculture Incubation Center (LAIC)

Afferdhy Ariffien, Irayanti Adriant and Juli Amirah Nasution

[+ Open abstract](#)

[View article](#)

[PDF](#)

OPEN ACCESS

012044

Analysis of Raw Material Inventory Planning Considering Uncertainty Demands (Case Study: Model Q with Back Order at PT. X)

Nurlaela Kumala Dewi, Irayanti Andriant and Julia Loren

[+ Open abstract](#)

[View article](#)

[PDF](#)

OPEN ACCESS

012045

Eclectic approach as idea of *e-educounseling* preliminary system model

Jumail, M F Noordin, N M Ibrahim, R Mujastuti and R D Risanty

[+ Open abstract](#)

[View article](#)

[PDF](#)

OPEN ACCESS

012046

Natural partial order on semigroup partial linear transformation with restricted range

A I A Himayati and M A Prasetyanto

[+ Open abstract](#)

[View article](#)

[PDF](#)

OPEN ACCESS

012047

The comparison of accuracy between naïve bayes clasifier and c4.5 algorithm in classifying toddler nutrition status based on anthropometry index

A Ridwan and T N Sari

[+ Open abstract](#)

[View article](#)

[PDF](#)

OPEN ACCESS

012048

Comparison of NB and NB-PSO to determine level of vehicles sales

I Romli, E Pusnawati, M Jaenal and A Siswandi

[+ Open abstract](#)

[View article](#)

[PDF](#)

OPEN ACCESS

012049

## Analysis of contrast limited adaptive histogram equalization (CLAHE) parameters on finger knuckle print identification

F M Hana and I D Maulida

[+ Open abstract](#) [View article](#) [PDF](#)

OPEN ACCESS

012050

## Transforming the Baitul Maal Wal Tamwil Business Model through the Patform Design Model

Fitri Nur Latifah, Masruchin, Bayu Wardhana, Eris Dwi Retno and Lela Monika

[+ Open abstract](#) [View article](#) [PDF](#)

OPEN ACCESS

012051

## The Role of Electronic Customer Relationship Management (E-CRM) In Improving Service Quality

Ahmad Zaelani Adnan, Agus Rahayu, Heny Hendrayati and Ramayani Yusuf

[+ Open abstract](#) [View article](#) [PDF](#)

OPEN ACCESS

012052

## Analysis of the Impact of using Syariah Bonds (Sukuk) and Conventional Bonds on Stock Returns for Investors in Indonesia: Study of Manufacturing Companies Listed on the IDX in the year 2015-2017

I. Dian Rahmawati, N. Qudus.SN and R Dian Pertiwi

[+ Open abstract](#) [View article](#) [PDF](#)

OPEN ACCESS

012053

## Analysis of Competitive Strategy to Create Sustainable Competitive Advantages Seen From the Nine Factor Model and Bacos Treacy Model

Nur Hayati, Evan Jaelani, Dani Sopian and Intan Pramesti Dewi

[+ Open abstract](#) [View article](#) [PDF](#)

OPEN ACCESS

012054

## Natural Disaster Mitigation Management in the case of Mount Tangkuban Parahu Eruption in West Java

Iis Dewi Fitriani, Wandy Zulkarnaen and Agus Bagianto

[+ Open abstract](#) [View article](#) [PDF](#)

OPEN ACCESS

012055

## Viral Marketing Strategies through Social Media of Interesting Visitor (Case Study Cafes Instagramable in Bandung)

Ulfa Yuniati, Nora Meilinda Hardi and Intan Primasari

[+ Open abstract](#) [View article](#) [PDF](#)

OPEN ACCESS

012056

## Computerized Text Analysis on Self-Description Text to Get Student's Prevailing, Confidence, and Drives

TA Syah, A Nurhayaty and S Apriyanto

[+ Open abstract](#) [View article](#) [PDF](#)

OPEN ACCESS

012057

## On The Locating Rainbow Connection Number of A Graph

Ariestha Widyastuty Bustan, A.N.M. Salman and Pritta Etriana Putri

[+ Open abstract](#) [View article](#) [PDF](#)

OPEN ACCESS

012058

## Wireless Scoreboard Technology Architecture for Athlete Performance Data Warehouse at

## Wireless Scoreboard Technology Architecture for Athletic Performance Data Warehouse at Multiple Table Sports Games

Estiyan Dwipriyoko, Widjajani, Wahyu Purnama Sari and Mujiarto

[+ Open abstract](#) [View article](#) [PDF](#)

OPEN ACCESS

012059

## Education Game Indonesian Old Museum Explorer using Fuzzy State Machine

M Rozikin, R Dijaya and C Taurusta

[+ Open abstract](#) [View article](#) [PDF](#)

OPEN ACCESS

012060

## Identification Growth Quality of Red Onion during Planting Period using Support Vector Machine

N A P Lestari, R Dijaya and N L Azizah

[+ Open abstract](#) [View article](#) [PDF](#)

OPEN ACCESS

012061

## Layout Classification of Red Onion Disease on Onion Leaf Image Using Artificial Neural Network

U N Mubarakhah, R Dijaya and M I Maulana

[+ Open abstract](#) [View article](#) [PDF](#)

OPEN ACCESS

012062

## Decision Support System for Determination of Decoration Service Employee Using Weighted Product Method (Case Study on Sanggar Puri Ethnic Decoration)

H Gunawan, Maramdhani, C Chazar and Y Warthana

[+ Open abstract](#) [View article](#) [PDF](#)

OPEN ACCESS

012063

## Design Technology of Geographical Information System of Rice Pandanwangi Cianjur Prediction Factors Products

Ai Musrifah, Andri Adikusuma and Sutono

[+ Open abstract](#) [View article](#) [PDF](#)

OPEN ACCESS

012064

## Model of Decision Support Method with SMART According to Choosing Venue

Siti Sarah Abdullah and Finni Rizkia

[+ Open abstract](#) [View article](#) [PDF](#)

OPEN ACCESS

012065

## Design and Application Data-Based Employee Eat Barcode Scanner

Ninik Sri Lestari, Sukirno, Hetty Fadriani, Ahmad Sujana, Yudi Herdiana and Rahmad Hidayat

[+ Open abstract](#) [View article](#) [PDF](#)

OPEN ACCESS

012066

## Design of Waste Management System Using QR Code for Effective Management in Wastebank

S Widaningsih and A Suheri

[+ Open abstract](#) [View article](#) [PDF](#)

OPEN ACCESS

012067

## Analysis and Design of Web-Based Health Service Information Systems (E-Health), in the Industrial Revolution Era 4.0

Wulan Andang Purnomo, Wahyu Prima, Yusran, Raimon Efendi and Suryadimal

[+ Open abstract](#) [View article](#) [PDF](#)

OPEN ACCESS	012068
<b>Design and Implementation of Computer Based Test (CBT) in vocational education</b>	
Raimon Efendi, Lido Sabda Lesmana, Firmansyah Putra, Efri Yandani and Ratih Agustin Wulandari	
<a href="#">+ Open abstract</a> <a href="#">View article</a> <a href="#">PDF</a>	
OPEN ACCESS	012069
<b>Implementation of Natural Language Processing in Seller-bot for SMEs</b>	
Sutadi Triputra and Firas Atqiya	
<a href="#">+ Open abstract</a> <a href="#">View article</a> <a href="#">PDF</a>	
OPEN ACCESS	012070
<b>Edge Detection to Make Drawing Sketch using Laplacian Operator and Gabor Wavelet for Learning Devices</b>	
Samsir, Firman Edi, Kalvin Ginting, Srie Hartati, Sondang and R A Purba	
<a href="#">+ Open abstract</a> <a href="#">View article</a> <a href="#">PDF</a>	
OPEN ACCESS	012071
<b>Usage Behavior on Digital Wallet: Perspective of the Theory of Unification of Acceptance and Use of Technology Models</b>	
Sukaris Sukaris, Wiki Renedi, Maulidiah Amalina Rizqi and Budiyo Pristiyadi	
<a href="#">+ Open abstract</a> <a href="#">View article</a> <a href="#">PDF</a>	
OPEN ACCESS	012072
<b>M-Bonk Based E-Participation in Street Infrastructure Development</b>	
Totok Wahyu Abadi, Wahyu Pratama Putra, Ilmi Usrotin Choiriyah and B A. Riyadh Umar	
<a href="#">+ Open abstract</a> <a href="#">View article</a> <a href="#">PDF</a>	
OPEN ACCESS	012073
<b>Diction on the Tantan Application: A Semantic Study</b>	
Nina, Yulia Adiningsih, Yusuf Heriyanto and Musaljon	
<a href="#">+ Open abstract</a> <a href="#">View article</a> <a href="#">PDF</a>	
OPEN ACCESS	012074
<b>PPDB Online As Innovation of Education Services</b>	
Lailul Mursyidah, Isnaini Rodiyah and Hafidz A'inur Ramadhan	
<a href="#">+ Open abstract</a> <a href="#">View article</a> <a href="#">PDF</a>	
OPEN ACCESS	012075
<b>The Development of Teaching Material For Popular Writing Based On Creative Industry Using M-Learning For College Students of Faculty of Language and Literature</b>	
Siti Ansoriyah	
<a href="#">+ Open abstract</a> <a href="#">View article</a> <a href="#">PDF</a>	
OPEN ACCESS	012076
<b>Estimation of Biresponse Multipredictor Model using Local Linear Estimator in Case of Scholastic Aptitude and Islamic Tests Modeling</b>	
Nidhomuddin, N Chamidah and A Kurniawan	
<a href="#">+ Open abstract</a> <a href="#">View article</a> <a href="#">PDF</a>	
OPEN ACCESS	012077
<b>Modelling Scholastic Aptitude Test of State Islamic Colleges in Indonesia using Least Square Spline Estimator in Longitudinal Semiparametric Regression</b>	



---

## Education and communication

---

**OPEN ACCESS** 012078

### Student Perceptions of Online Quiz as a Supporting Tool in Learning Chinese

Xuc Lin and Mariana

[+ Open abstract](#) [View article](#) [PDF](#)

---

**OPEN ACCESS** 012079

### Utilization of ICT-Based Learning Media in Local History Learning

Bahri, Humaedi, Rizal, Mahfud M. Gamar, Misnah and Andi Dewi Riang Tati

[+ Open abstract](#) [View article](#) [PDF](#)

---

**OPEN ACCESS** 012080

### Design of Megalite Site As a Source of Learning for Youtube Multimedia Based Students

Nuraedah and Misnah

[+ Open abstract](#) [View article](#) [PDF](#)

---

**OPEN ACCESS** 012081

### The Effect of Massively Multiplayer Online Game on Player Behaviour

Runik Machfiroh, Aris Rahmansyah and Arief Budiman

[+ Open abstract](#) [View article](#) [PDF](#)

---

**OPEN ACCESS** 012082

### Introduction of traditional lebak musical instruments through aplikasi android for early childhood

Eka Setiawati, Dentik Karyaningsih, SuciAprilyati Ruiyat, Hadi Sutiawan, Iman Sampurna and Eneng Sri Susilawati

[+ Open abstract](#) [View article](#) [PDF](#)

---

**OPEN ACCESS** 012083

### The improvement of Chemistry Learning Outcomes of MAN 1 Cirebon City Student On the Material Structure of the Atom-Based Qurani Students Worksheet (LKPD)

Dewiantika Azizah, Evi Fidawati and Aliet Noorhayati Sutisno

[+ Open abstract](#) [View article](#) [PDF](#)

---

**OPEN ACCESS** 012084

### The Development of Video Learning Based on Videoscrieb Application For Social Science inPrimary School

Usmaedi, Dede Kurnia Adiputra, Tjut Afrida, Ade Eka Anggraini, Puji Siswanto, Aan Subhan Pamungkas, Deri Hendriawan and Dentik Karyaningsih

[+ Open abstract](#) [View article](#) [PDF](#)

---

**OPEN ACCESS** 012085

### Implementation of Examles Non Examples in the Development Site Material in of *Megalithic* Lore Lindu Central Sulawesi for Student of Tadulako University, Indonesia

Misnah, Hamlan Andi Baso Malla, Bau Ratu and Bahri

[+ Open abstract](#) [View article](#) [PDF](#)

---

**OPEN ACCESS** 012086

### Development of Vocational Learning Video Based on Local account in PKN Learning in Elementary School

## Elementary School

Dede Kurnia Adiputra, Dentik Karyaningsih, Suci Aprilyati Ruiyat, Yadi Heryadi, Iman Sampurna and Elih Solihatulmillah

[+ Open abstract](#) [View article](#) [PDF](#)

### OPEN ACCESS

012087

#### Learning Materials Based On Digital Art Student Creativity in Universitas Muhammadiyah Tapanuli Selatan

Rizky Ariaji, Ahmad Husein Nasution, Andes Fuady Dharma Harahap, Abubakar, Sahlan Tuah, Darwis and Lelya Hilda

[+ Open abstract](#) [View article](#) [PDF](#)

### OPEN ACCESS

012088

#### Benefits of Using Mobile Apps as a Support for Mandarin Language Learning

Jureynolds, Theresia and Y Ying

[+ Open abstract](#) [View article](#) [PDF](#)

### OPEN ACCESS

012089

#### Mandarin M-Comic Application Design in Supporting Mandarin Vocabulary Learning

Jureynolds, Y Ying and K Rosalin

[+ Open abstract](#) [View article](#) [PDF](#)

### OPEN ACCESS

012090

#### Comic Strip Project in the M-Comic Application for Mandarin Vocabulary Learning

Jureynolds, K Rosalin and Y Ying

[+ Open abstract](#) [View article](#) [PDF](#)

### OPEN ACCESS

012091

#### Critical Multiliteration: An Alternative Learning Model for Developing Metacognition Skills in Elementary School Students

A Hendriani, Y Tri Herlambang, E Rohayati, Ernalis and D Setiawan

[+ Open abstract](#) [View article](#) [PDF](#)

### OPEN ACCESS

012092

#### The Effectiveness of Multiliteration Learning Models in Increasing Ecological Literacy of Primary School Students

Dede Margo Irianto, Yusuf Tri Herlambang, Hana Yunansah, Tita Mulyati and Dadan Setiawan

[+ Open abstract](#) [View article](#) [PDF](#)

### OPEN ACCESS

012093

#### The Implementation of the Amora Learning Model to Improve Students' Digital Literacy Skill of Indonesia University of Education

Ocih Setiasih, Wawan Setiawardani, Nandi, Rusman and Sandi Budi Iriawan

[+ Open abstract](#) [View article](#) [PDF](#)

### OPEN ACCESS

012094

#### Improve Mathematics Pedagogical Content Knowledge and Verbal Communication Skills through Cooperative Learning Type Jigsaw

Mahmudin Sudin, CecepMaman Hermawan, Okta Rosfiani, Wahyuliana Ristiawati and Saifatul Hasanah

[+ Open abstract](#) [View article](#) [PDF](#)

### OPEN ACCESS

012095

#### Teacher's Efforts to Enhance Students' Competence in Madrasah Ibtidaiyah in Science Skills and Academic Achievement

Aep Saepuloh, Okta Rosfiani, CecepMaman Hermawan, Sutiawati and Mita Apriyana

[+ Open abstract](#)
[View article](#)
[PDF](#)
**OPEN ACCESS**

012096

**Collaboration on Involvement in Improving Science Learning Outcomes through Group Investigation**

Okta Rosfiani, Cecep Maman Hermawan, Siti Maisaroh, Labib Romannada, Nur Fadillah Mawartika and Anwar Ilmar Ramadhan

[+ Open abstract](#)
[View article](#)
[PDF](#)
**OPEN ACCESS**

012097

**Needs Analysis of Web-Based Performance Assessment of Network Administration Learning to Improve HOTS Competence**

Ambiyar, Raimon Efendi, Waskito, Nur Zamalia Afifa and Ratih Agustin Wulandari

[+ Open abstract](#)
[View article](#)
[PDF](#)
**OPEN ACCESS**

012098

**The Role of the Teacher to Construct Teaching and Learning Activities Creating a Freedom to Learn (Action Research Study)**

Martiman Suaizisiwa Sarumaha

[+ Open abstract](#)
[View article](#)
[PDF](#)
**OPEN ACCESS**

012099

**Application of Web Based Learning to Measure Students Learning Interest**

Selvy Sulyanah, Fitria Nur Hasanah and Rahmania Sri Untari

[+ Open abstract](#)
[View article](#)
[PDF](#)
**OPEN ACCESS**

012100

**Improving Students' Creativity Through Sharing and Jumping Task in Mathematics Lesson Study Activity**

N Fauziyah, S Asari, U Ma'rifah, S Uchtiawati and A Husniati

[+ Open abstract](#)
[View article](#)
[PDF](#)
**OPEN ACCESS**

012101

**Profile of Metacognition Skill of Students with Dependent Field Cognitive Style in Solving HOT Problems in Science**

N Shofiyah, M Zannah and F E Wulandari

[+ Open abstract](#)
[View article](#)
[PDF](#)
**OPEN ACCESS**

012102

**An Analysis of Teacher Candidates Scientific Literacy through Nature of Science (NoS) in Inquiry-Based Learning**

F Wulandari, E Setiyawati and F Su'udiyah

[+ Open abstract](#)
[View article](#)
[PDF](#)
**OPEN ACCESS**

012103

**Need Analysis for Development of Web-Based Flipped Classroom Learning Models in Vocational Education**

Ambiyar, Raimon Efendi, Waskito, Iffah Rojiyyah and Ratih Agustin Wulandari

[+ Open abstract](#)
[View article](#)
[PDF](#)
**OPEN ACCESS**

012104

**Error analysis and its causal factors in solving mathematical literacy problems in terms of habits**

OPEN ACCESS

012105

Effectiveness of the News Text Classification Test Using the Naïve Bayes' Classification Text Mining Method

Yi Ying, T N Mursitama, Shidarta and Lohansen

[+ Open abstract](#) [View article](#) [PDF](#)

OPEN ACCESS

012106

The Advantages of Pleco and Google Translate Applications in Assisting Mandarin Language Learning

Yi Ying, Theresia and Vivi Febriana

[+ Open abstract](#) [View article](#) [PDF](#)

OPEN ACCESS

012107

The Role of the Mandamonic Games in Supporting Mandarin Learning at Elementry School

Yi Ying, PM Susilo, FR Mei and T Rahardjanti

[+ Open abstract](#) [View article](#) [PDF](#)

OPEN ACCESS

012108

Representation of Student's Creative Thinking Skills: Case Studies on Basic Biology Course

Ipah Budi Minarti and Lissa

[+ Open abstract](#) [View article](#) [PDF](#)

OPEN ACCESS

012109

Mathematical Proficiency Profile of Prospective Mathematics Teacher Students

I Gunawan, L Nurhayati, Widjajani and Budi Hendrawan

[+ Open abstract](#) [View article](#) [PDF](#)

OPEN ACCESS

012110

The Effectiveness of the Learning Cycle Model (5E and 7E) in Learning to Build Flat Side Sides Viewed From Student Self-Eficacy

W R Puspita and F Fardillah

[+ Open abstract](#) [View article](#) [PDF](#)

OPEN ACCESS

012111

Mathematical creative thinking process of the students: an analysis of Wallas stages and personality types

N Ratnaningsih

[+ Open abstract](#) [View article](#) [PDF](#)

OPEN ACCESS

012112

Creative Play and Learning in Natural Environment to Develop Creative-Ecoliteracy in Elementary School Students

Neni Maulidah, Sunanih, Rahman and Nana Supriatna

[+ Open abstract](#) [View article](#) [PDF](#)

OPEN ACCESS

012113

Multidimentional Item Respose Utilization for Validating Mathematics National Examination in Indonesia

J Arlinwibowo, I Achyani and G Kurniadi

OPEN ACCESS 012114

### Symbol Sense of Mathematics Students in Solving Algebra Problems

Ariati Dwi Prasetya Rini, Saddam Hussien, Herlina Hidayati and Anwar Muttaqien

[+ Open abstract](#) [View article](#) [PDF](#)

OPEN ACCESS 012115

### Effectiveness of Website-Based Smart Seminar Application on Islamic Learning (Case Study at Raharja University)

Abdul Hamid, Arribathi, Suwanto, Ita Erliyani, Saryani and Haris

[+ Open abstract](#) [View article](#) [PDF](#)

OPEN ACCESS 012116

### Comparison of Mathematic Communication Ability Through Problem Based Learning And Guided Discovery

W Wandari and F Fardillah

[+ Open abstract](#) [View article](#) [PDF](#)

OPEN ACCESS 012117

### Classification of Student's Mathematical Reflective Thinking in Calculus Class

R L Ariany, T T Widiastuti, A L R Jauhari and F Fardillah

[+ Open abstract](#) [View article](#) [PDF](#)

OPEN ACCESS 012118

### Profile of Students' Statistical Reasoning Capabilities in Introductory Social Statistics Courses

A L R Jauhari, R L Ariany, F Fardillah and A Ayu

[+ Open abstract](#) [View article](#) [PDF](#)

OPEN ACCESS 012119

### Increasing Independence of Cerebral Palsy Children using Virtual Reality based on Mlearning

Muhaimin Hasanudin, Abdul Hamid Arribathi, Indrianto, Khozin Yuliana and Dedy Prasetya Kristiadi

[+ Open abstract](#) [View article](#) [PDF](#)

OPEN ACCESS 012120

### Service Provider Information System in Technopreneurship Learning for MSMEs

Muhaimin Hasanudin, Khozin Yuliana, Ahmad Roihan, Abdul Hamid Arribathi and Haris

[+ Open abstract](#) [View article](#) [PDF](#)

OPEN ACCESS 012121

### Mathematical Design Study of Drainage And Dewatering Strategies: Integrated System For Water Management in Open-Pit Mining

D. Rosarina, F. Fardillah and Y. G. Wibowo

[+ Open abstract](#) [View article](#) [PDF](#)

OPEN ACCESS 012122

### Analysis The Ability of Thinking Abstractly of Mathematics And Self-Efficacy Through Tpack

Moh. Nurhadi and Darhim

[+ Open abstract](#) [View article](#) [PDF](#)

OPEN ACCESS 012123

### Analysis of Students Mathematics Reasoning Ability in View of Mathematical Problem Solving Ability



OPEN ACCESS

012124

Digital Geoshapes Learning Media In Supporting Mathematics Education II PGSD

Mohamad Hariyono, Ernayanti Nur Widhi and Nuhya Ulia

OPEN ACCESS

012125

Student Responses During Online Learning in the Covid-19 Pandemic Period

Ahmad, Hasnawati, Mulyadi, M Apriyanto, A Oklianda, D D Putra and A Warmi

OPEN ACCESS

012126

Statistical Literacy Analysis of Pre-Service Elementary Teachers Education

D S Nahdi, M G Jatisunda, U Cahyaningsih, Y D Kurino, E Juliar and W Bilda

OPEN ACCESS

012127

The Effect Of Realistic Mathematics Education On Elementary Students' Critical Thinking Skills

Ujiati Cahyaningsih and Dede Salim Nahdi

OPEN ACCESS

012128

Effectiveness of Puppet Media in Improving Speaking Skills of Elementary School Students

D S Saputra, Y Yuliati and B Febriyanto

OPEN ACCESS

012129

Assessing didactic mathematical knowledge for teaching geometry transformation

A Nurdiana, M J Tanod and A G Adirakasiwi

OPEN ACCESS

012130

Teaching STEM through play in kindergarten: analysis towards pre-service early childhood teachers preparing the lesson plan

A Rasyid, M K Sugandi, A A Gaffar, M G Jatisunda, E Santoso and D S Nahdi

OPEN ACCESS

012131

IbisPaint X Apps in Creating Collaborative 3D Learning media of Pop-Up and Movable Books

C Hasanudin, N Mayasari, K Saddhono and R A Prabowo

OPEN ACCESS

012132

The Use of Microsoft Mathematics Program toward Students' Learning Achievement

N Mayasari, C Hasanudin, A Fitriyaningsih, R Jayanti, N Setyorini, P Y Kurniawan and L Nurpratiwiningsih

OPEN ACCESS

012133

Android-Based Learning Environment To Enhance Creative Thinking Mathematics and Self-Efficacy

## OPEN ACCESS

012134

[Google class activities during COVID 19: learning studies on introductory education courses](#)

F Fadilah, R Amalia, F Mustika and M G Jatisunda

[+ Open abstract](#) [View article](#) [PDF](#)

## OPEN ACCESS

012135

[Project-based learning with LMS moodle to promote mathematical problem solving and self-regulated learning](#)

J W Kusuma, Hamidah, I Mahuda, R S Sukandar, E Santoso and M G Jatisunda

[+ Open abstract](#) [View article](#) [PDF](#)

## OPEN ACCESS

012136

[Learning Numerics Words Through Online Games Learning](#)

Y Ying and Jureynolds

[+ Open abstract](#) [View article](#) [PDF](#)

## OPEN ACCESS

012137

[Using Online-Game Based Platform to Improve Students Mandarin Skills](#)

Y Ying, Yulius and A Juniarto

[+ Open abstract](#) [View article](#) [PDF](#)

## OPEN ACCESS

012138

[Using Technology-Flashcard to Encourage Students Learning Mandarin](#)

Y Ying, D Marchelline and G Wijaya

[+ Open abstract](#) [View article](#) [PDF](#)

## OPEN ACCESS

012139

[Virtual Mandarin Learning Tools for Interactive Online Learning](#)

Sofi and Y Ying

[+ Open abstract](#) [View article](#) [PDF](#)

## OPEN ACCESS

012140

[Student's Prevailing, Confidence, and Drives: Computerized Text Analysis on Self-Description Text](#)

Sigit Apriyanto, Tansri Adzlan Syah and Any Nurhayaty

[+ Open abstract](#) [View article](#) [PDF](#)

## OPEN ACCESS

012141

[The Relationship Between Limb Muscle \*Power\* and Balance With "Yeop Chagi" Kick Technique on Taekwondo on The Members of Gunung Karang Taekwondo Club \(GKTC\) 1995, Pandeglang Regency](#)

Dedi Aryadi, Ridwan Sudirman, Mukhtar Ridwan, Taufik Hidayat Suharto, Ayi Rahmat and Wandu Suwandi Assayid

[+ Open abstract](#) [View article](#) [PDF](#)

## OPEN ACCESS

012142

[4Cs Analysis of 21st Century Skills-Based School Areas](#)

Ahmad Khoiri, Evalina, Nur Komariah, Rahayu Tri Utami, Vip Paramarta, Siswandi, Janudin and Denok Sunarsi

[+ Open abstract](#) [View article](#) [PDF](#)

OPEN ACCESS 012143

### The fullness of Higher Order Thinking Skills (HOTS) in Applied Science Textbooks of Vocational Schools

Achmad Rozi, Ahmad Khoiri, R Dewi Mutia Farida, Denok Sunarsi, Jasmani, Paeno, Munawaroh and Udi Iswadi

[+ Open abstract](#) [View article](#) [PDF](#)

OPEN ACCESS 012144

### Development of Electronic Portfolios and Self-Assessment Based on High Order Thinking Skills in Pancasila and Citizenship Learning at Students of Al-Islam Bandung Polytechnic

Muh. Husen Arifin

[+ Open abstract](#) [View article](#) [PDF](#)

OPEN ACCESS 012145

### The Relevance of Reading Teaching Material Using New Technology

Cucu Sutini, Emzir and Yumna Rasyid

[+ Open abstract](#) [View article](#) [PDF](#)

## Engineering and Technology

OPEN ACCESS 012146

### Virulence of Entomopathogenic Fungi Isolates against Green Ladybug *Nezara viridula* L. (Hemiptera: Pentatomidae) Eggs

Muhammad Agung Permadi, Rafiqah Amanda Lubis, Mukhlis, Qorry Hilmiyah Harahap and Ulfa Sari Siregar

[+ Open abstract](#) [View article](#) [PDF](#)

OPEN ACCESS 012147

### Numerical Study on Behaviour of Spiral Concrete Columns and Slender Concrete Filled Steel Tube (CFST) Columns against Concentric Axial Loads

Usman Wijaya and William Sanjaya

[+ Open abstract](#) [View article](#) [PDF](#)

OPEN ACCESS 012148

### The Relationship between Strategic Agility and Resource Base View of the Firm Performance in Manufacturing Industry: The Research Framework

R Nurjaman, A Rahayu, L A Wibowo, Widjajani and Mujiarto

[+ Open abstract](#) [View article](#) [PDF](#)

OPEN ACCESS 012149

### Navigation Lamp Model on Maritime Vocational Education Integrated With STEM Approach: Analysis and Design

I. Mustain, Abdurohman, E. Iskandar and D. Nuryaman

[+ Open abstract](#) [View article](#) [PDF](#)

OPEN ACCESS 012150

### Evaluation of Total Armada Transport City Route 05B in Cianjur City

Devi Setiawan

[+ Open abstract](#) [View article](#) [PDF](#)

OPEN ACCESS 012151

### Analysis of Scour Depth Around Bridge Piers With Round Nose Shape by HEC-RAS 5.0.7 Software

C S Silvia, M Ikhsan, A Wirayuda and Mastiar

[+ Open abstract](#) [View article](#) [PDF](#)

---

OPEN ACCESS 012152

Design and Development of Student Activity Record Systems Using the Concept of Reactive Streams in Data Stream Processing

Aila Gema Safitri, Denny Chandra and Mervin Tangguar Hutabarat

[+ Open abstract](#) [View article](#) [PDF](#)

---

OPEN ACCESS 012153

Additionalto Synthetic Fiber On Materials Plastic Injection To Minimize Product Defects

Firmansyah Azharul, Rahmawati, Harno, Wilarso and Mujiarto

[+ Open abstract](#) [View article](#) [PDF](#)

---

OPEN ACCESS 012154

Hotel Wastewater Treatment by Integrating Mixing and Electrocoagulation Process

F.A. Nugroho, S.K. Lestari, W. Pebriani and P.T.P. Aryanti

[+ Open abstract](#) [View article](#) [PDF](#)

---

OPEN ACCESS 012155

Performance Analysis Using the Supply Chain Operations Reference (SCOR) and AHP Method

Akhmad Sutoni, Ali Subhan, Widy Setyawan, Fitri Oktavia Bhagyana and Mujiarto

[+ Open abstract](#) [View article](#) [PDF](#)

---

OPEN ACCESS 012156

Preparation of Polyvinyl Chloride/ZnO Composite Ultrafiltration Membrane for Peat Water Treatment

E. Putri, D. Sidabutar, N.A. Putri, S. Sakinah, F.A. Nugroho and P.T.P. Aryanti

[+ Open abstract](#) [View article](#) [PDF](#)

---

OPEN ACCESS 012157

Android Based Information System of *Indekos* Booking and Rentation Locations in Cianjur District

Tarmin Abdulghani, Lalan Jaelani and Japar Sidik

[+ Open abstract](#) [View article](#) [PDF](#)

---

OPEN ACCESS 012158

Simulation of Mixing Synthetic with hydrocarbons Refrigerant to Reduce the Value of Global Warming Potential with Refprop Software

Widodo, TK Berkah Fajar, MSK Tony Suryo and SH Winoto

[+ Open abstract](#) [View article](#) [PDF](#)

---

OPEN ACCESS 012159

Electrical Energy Alternative of Magnetic Field Around Wire of Power Line

Yakob Liklikwati, Syafruddin, Givy Devira Ramady, Ninik Sri Lestari, Herawati YS and Rahmad Hidayat

[+ Open abstract](#) [View article](#) [PDF](#)

---

OPEN ACCESS 012160

Analysis of Unsignalized Intersection Using PKJI 2014 Method (Study Case: Intersection of Jalan Sukajadi - Jalan Sukawangi-Jalan Sindang Sirna, Bandung)

Hetty Fadriani, Iman Hidayat, N.R Adinda, Samun Haris, Andrew Ghea Mahardika and Budi Nuryono

[+ Open abstract](#) [View article](#) [PDF](#)

---

OPEN ACCESS 012161

3 Phase Inverter Switching Algorithm for Industrial Needs

[+ Open abstract](#) [View article](#) [PDF](#)

---

**OPEN ACCESS**

012162

**Calculation and Analysis of Overall Equipment Effectiveness (OEE) Method and Six Big Losses toward the Production of Corter Manchines in Oni Jaya Motor**

Widy Setyawan, Akhmad Sutoni, Taufik Munandar and Mujiarto

[+ Open abstract](#) [View article](#) [PDF](#)

---

**OPEN ACCESS**

012163

**Development of Campus Hotspot Network Infrastructure using Peer Connection Queue Method based on Voucher System**

Givy Devira Ramady, Yakob Liklikwatil, Ninik Sri Lestari, Rahmad Hidayat, Ganjar Kurniawan Sukandi and Rosyidin Sufyani

[+ Open abstract](#) [View article](#) [PDF](#)

---

**OPEN ACCESS**

012164

**Alternative Management of Traffic Accidents with Road Geometric Repair**

Fatchur Rochman Al Fauzi

[+ Open abstract](#) [View article](#) [PDF](#)

---

**OPEN ACCESS**

012165

**Implementation of Back Propagation Artificial Neural Network for Heart Disease Abnormality Diagnosis**

Jaya Kuncara Rosa Susila, Muhammad Afrit and Pujo Laksono

[+ Open abstract](#) [View article](#) [PDF](#)

---

**OPEN ACCESS**

012166

**Analysis of Water Resources in Irrigation Channels as Kinetic Energy Sources**

Mangambit Juliandar Simanjuntak, Yakub Siahaan, Didik Trimo, GM Andrew, Darmono Sardjoe and Ahmad Sujana

[+ Open abstract](#) [View article](#) [PDF](#)

---

**OPEN ACCESS**

012167

**Characteristics of Porous Asphalt Mixture by Using a Bottom Ash Boiler as a Filler**

Chaira, M Refiyanni and Azwanda

[+ Open abstract](#) [View article](#) [PDF](#)

---

**OPEN ACCESS**

012168

**Experimental Study of Heat Transfer Using Water – Cooled Condensers to Increase Oil Production from Plastic Waste**

Suryadimal, Rizky Arman, Elmi Sundari, Yeasy Darmayanti and Raimon Efendi

[+ Open abstract](#) [View article](#) [PDF](#)

---

**OPEN ACCESS**

012169

**Modelling and Performance Analysis of Synchronous Reference Frame Phase-Locked Loop for Three-phase Grid-connected PV Generation System**

Syafrudin Masri, H Aphieez and Jaya Kuncara Rosa Susila

[+ Open abstract](#) [View article](#) [PDF](#)

---

**OPEN ACCESS**

012170

**Analysis of Effect Electric Field Strenght on Safe Distance Below Main Substation Busbar 150 kV**

H Yuruf and M Akhadun



[+ Open abstract](#) [View article](#) [PDF](#)

OPEN ACCESS

012171

### A Design for Self Balancing Scale Model Bicycle

Umar Tsani Abdurrahman, Pria Sukamto, Mohamad Anas Sobarnas and Mujiarto

[+ Open abstract](#) [View article](#) [PDF](#)

OPEN ACCESS

012172

### Analysis of SOS Results for Engine Lubricants Contaminated by the Fuel in The 3516 TA Diesel Engine Generator Set

Wilarso, Aswin Domodite, Hilman Sholih and Mujiarto

[+ Open abstract](#) [View article](#) [PDF](#)

OPEN ACCESS

012173

### Analysis of Occupational Safety and Health Systems in Bridge Construction Development Logistics Systems: Case Study at Cibeureum Bridge, Sukabumi

N.E Ichwan, Akhmad Sutoni, Siti Tsana Khoerunnisa and Mujiarto

[+ Open abstract](#) [View article](#) [PDF](#)

OPEN ACCESS

012174

### The Analysis of Banana Peels are used as Water Purifying Materials

P H Tjahjanti, Iswanto, M F Luliefan, A Fahrudin and R R Ernanda

[+ Open abstract](#) [View article](#) [PDF](#)

OPEN ACCESS

012175

### The use of User-centered Design Canvas for Rapid Prototyping

Irwan Alnarus Kautsar and M. Ruslianor Maika

[+ Open abstract](#) [View article](#) [PDF](#)

OPEN ACCESS

012176

### 2D Detection Model of Defect on the Surface of Ceramic Tile by an Artificial Neural Network

B Mariyadi, N Fitriyani and T R Sahroni

[+ Open abstract](#) [View article](#) [PDF](#)

OPEN ACCESS

012177

### Machine Learning Sentiment Analysis in Detection System for Rupiah Currency Value Using SysML Language

Rio Aurachman, Luthfi Ramadani and Nino Setyo Utomo

[+ Open abstract](#) [View article](#) [PDF](#)

OPEN ACCESS

012178

### Information System Control and Improvement Process Design based on Clause 8 ISO 20000-1:2018 using SysML Language

Rio Aurachman, Nur Ihsan Utama and Jauhari Habibie

[+ Open abstract](#) [View article](#) [PDF](#)

OPEN ACCESS

012179

### Utilization Plastic Waste Type PET (PolyEthylene Terephthalate) in the Making of Low-Quality Concrete in the City of Palangkaraya

Kamaliah and Noviyanthi Handayani

[+ Open abstract](#) [View article](#) [PDF](#)

OPEN ACCESS

012180

### Correlation Between Indeks Plasticity (Pi) and California Bearing Ratio (Cbr) Value of Palangkaraya Soil

Noviyanthy Handayani and Norseta Ajie Saputra

[+ Open abstract](#) [View article](#) [PDF](#)

OPEN ACCESS

012181

### Eye Tracker Evaluation on Google Classroom Using USE Questionnaire

Atyanti Dyah Prabaswari, Bagus Wahyu Utomo and Hari Purnomo

[+ Open abstract](#) [View article](#) [PDF](#)

OPEN ACCESS

012182

### Business process improvement in brown sugar industry in Kudus regency

Mu'adzah and Taufiq Immawan

[+ Open abstract](#) [View article](#) [PDF](#)

OPEN ACCESS

012183

### Fatigue Life Prediction of 180 Ton Lifting Spreader Construction Material ST43 Using S-N Curve

Asep Dharmanto and Asep Saepudin

[+ Open abstract](#) [View article](#) [PDF](#)

OPEN ACCESS

012184

### A Design for Three Phase Electronic Controller for Electric Motor Cycle Equivalent to 100-125 Cc Engine Power with Regenerative Braking System

Umar Tsani, Asep Saepudin and Pria Sukamto

[+ Open abstract](#) [View article](#) [PDF](#)

OPEN ACCESS

012185

### Policy Analysis on Spare Part Inventory of Critical Asset with Life Cycle Cost Approach

Winda Nur Cahyo, Riza S.I. Raben, Haryo Prawahandaru, Bayu A. Swasono, Riyan Tri Sutartono and

Taufiq Immawan

[+ Open abstract](#) [View article](#) [PDF](#)

OPEN ACCESS

012186

### Finding Novelty of Research with Systematic Literature Mapping (SLM)

Winda Nur Cahyo

[+ Open abstract](#) [View article](#) [PDF](#)

OPEN ACCESS

012187

### Designing user interface of web-based e-commerce application

A Heriyandi, R F Reza and C N Albar

[+ Open abstract](#) [View article](#) [PDF](#)

OPEN ACCESS

012188

### Website-based Al-Quran memorization monitoring and evaluation system design

T Suryana, I Oktaviany and N P Dewi

[+ Open abstract](#) [View article](#) [PDF](#)

OPEN ACCESS

012189

### Web-based information system sales

F S Suwita, S A Sholihat and N P Dewi

[+ Open abstract](#) [View article](#) [PDF](#)

OPEN ACCESS	012190
Internet of things for flood and landslide early warning	
E S Soegoto, F A Fauzi and S Luckyardi	
<a href="#">+ Open abstract</a> <a href="#">View article</a> <a href="#">PDF</a>	
OPEN ACCESS	012191
Implementation of management information system at health agencies	
E S Soegoto, M E Wardana and D Oktafiani	
<a href="#">+ Open abstract</a> <a href="#">View article</a> <a href="#">PDF</a>	
OPEN ACCESS	012192
Information system for waste bank savings	
E S Soegoto, F H Arifin and D Oktafiani	
<a href="#">+ Open abstract</a> <a href="#">View article</a> <a href="#">PDF</a>	
OPEN ACCESS	012193
Technology-based education	
A Friyanto, I Prasetyo and C N Albar	
<a href="#">+ Open abstract</a> <a href="#">View article</a> <a href="#">PDF</a>	
OPEN ACCESS	012194
An Experimental Study of the Savonius Water Current Turbine by means of Myring Equation for $n = 1$	
P A Setiawan, M Santoso, R Indarti, N Ariwiyono, T Yuwono and W A Widodo	
<a href="#">+ Open abstract</a> <a href="#">View article</a> <a href="#">PDF</a>	
OPEN ACCESS	012195
The Planning Of Temperature Monitoring System, and Humidity On Supply Chain potatos industry based on Web	
S Aman, S Intakor, M Wijayanti and N A Firmansyah	
<a href="#">+ Open abstract</a> <a href="#">View article</a> <a href="#">PDF</a>	
OPEN ACCESS	012196
The Role of Using Gadgets in Facing the Existence of Information Systems in the Tourism Village Community in Cidadap Village Using TAM (Technology Acceptance Model)	
M K Legiawan, A Sutoni and Mujiarto	
<a href="#">+ Open abstract</a> <a href="#">View article</a> <a href="#">PDF</a>	
OPEN ACCESS	012197
Application platform for e-reservation system in traditional show	
A Mulyana, D Rusmana and A A Rafdhi	
<a href="#">+ Open abstract</a> <a href="#">View article</a> <a href="#">PDF</a>	
OPEN ACCESS	012198
An Experimental Study of Overlap Ratio Effect to Savonius water Current Turbine by using Myring Equation for $n=1$	
P A Setiawan, R Indarti, N Ariwiyono, T Yuwono and W A Widodo	
<a href="#">+ Open abstract</a> <a href="#">View article</a> <a href="#">PDF</a>	
OPEN ACCESS	012199
Quality of service evaluation based on importance performance analysis method and the kano model	

OPEN ACCESS

012200

**Grafting of Maleic Anhydride onto Cyclized Natural Rubber in the Melt Phase: the Effect of Trimethylol Propane Triacrylate**

M Said Siregar, Desi Ardilla, Eddiyanto and Asmara Sari Nasution

[+ Open abstract](#) [View article](#) [PDF](#)

OPEN ACCESS

012201

**Minimize waste on production process using lean concept**

SK Dewi, D M Utama and R N Rohman

[+ Open abstract](#) [View article](#) [PDF](#)

OPEN ACCESS

012202

**Roles Of Quisionary Data To Assess The Vco (Virgin Coconut Oil) Micro Business Performance In The Bojong 3 State, Bojong Village, Panjatan Sub-District, Kulons Progo Regency**

KRT Nur Suhascaryo and Alp Yudiantoro

[+ Open abstract](#) [View article](#) [PDF](#)

OPEN ACCESS

012203

**Flow visualization analysis on the vertical axis Savonius water turbine by placing a cylinder in front of returning by varying stagger angle**

P A Setiawan, T Yuwono and W A Widodo

[+ Open abstract](#) [View article](#) [PDF](#)

OPEN ACCESS

012204

**Four-scroll chaotic attractor and four-scroll hyperchaotic attractor generated from a new four-dimensional dynamical system**

Khaled Benkouider, Toufik Bouden, Mustak E. Yalcin, Aceng Sambas, Mujiarto, Muhamad Ali Pahmi, Akhmad Sutoni and Widjajani

[+ Open abstract](#) [View article](#) [PDF](#)

OPEN ACCESS

012205

**Computer Modelling of the Information Properties of Hyper Chaotic Lorenz System and Its Application in Secure Communication System**

Volodymyr Rusyn, Mujiarto, Mustafa Mamat, Firmansyah Azharul, W. S. Mada Sanjaya, Aceng Sambas, Estiyan Dwipriyoko and Akhmad Sutoni

[+ Open abstract](#) [View article](#) [PDF](#)

OPEN ACCESS

012206

**A New 4-D Multistable Hyperchaotic Two-Scroll System, its Bifurcation Analysis, Synchronization and Circuit Simulation**

Sundarapandian Vaidyanathan, Aceng Sambas, Mujiarto, Mustafa Mamat, Wilarso, W.S. Mada Sanjaya, Akhmad Sutoni and I Gunawan

[+ Open abstract](#) [View article](#) [PDF](#)

---

## Environmental and Earth science

OPEN ACCESS

012207

**Growth Analysis of *Escherichia coli* and *Salmonella typhi* on MacConkey Agar Modification**

Y Supriatin, V A Sumirat and M Herdiani

[+ Open abstract](#) [View article](#) [PDF](#)

---

OPEN ACCESS 012208

**Antifouling Activity of *Cymodecea rotundata* and *Halodule pinifolia* at Pulau Morotai**

Nurafni, R M Nur, K Koroy, D Alwi, S Muhammad and N Eso

[+ Open abstract](#) [View article](#) [PDF](#)

---

OPEN ACCESS 012209

**Enhancing Food Security throughout Aquaponics in Urban Farming Development Strategy**

Ristina Siti Sundari, Adnan Arshad, Lies Sulistyowati, Trisna Insan Noor and Iwan Setiawan

[+ Open abstract](#) [View article](#) [PDF](#)

---

OPEN ACCESS 012210

**Analysis of Quality Control of Chicken Nugget Products by Using Six Sigma Method at PT. XYZ**

Neldo Irawan, Anny Ratnawati and Salsa Dilla

[+ Open abstract](#) [View article](#) [PDF](#)

---

OPEN ACCESS 012211

**The Role of Farmers Readiness in the Sustainable Palm Oil Industry**

M Apriyanto, Partini, H Mardesci, G Syahrantau and Yulianti

[+ Open abstract](#) [View article](#) [PDF](#)

---

## Medical physics

---

OPEN ACCESS 012212

**The Effect of Modern Dressing Using Mix Cadexomer Iodine Hydrogel on Wound Healing Process in WCC Pati**

Dewi Hartinah, Hartotok and Effendy Yusuf

[+ Open abstract](#) [View article](#) [PDF](#)

---

## Multidisciplinary science

---

OPEN ACCESS 012213

**Bioaccumulation Of Lead (Plumbum) In Red Tilapia Fish From The Jombor Swamp**

S D Andasari, A A Styawan, N Hidayati and O N Prasetyanti

[+ Open abstract](#) [View article](#) [PDF](#)

---

OPEN ACCESS 012214

**INDHCI: Indonesian Districts Health Care Information Model**

Dedy Prasetya Kristiadi, Muhaimin Hasanudin, Sutrisno, Jawahir, Ferry Sudarto and Rasyid Tarmizi

[+ Open abstract](#) [View article](#) [PDF](#)

---

OPEN ACCESS 012215

**Design of a scanning thermocouple inhomogeneity**

Heri Nugraha, Prawito Prajitno, Aditya Achmadi, Arfan Sindhu Tistomo, Dwi Larassati and Agung Imaduddin

[+ Open abstract](#) [View article](#) [PDF](#)

---

OPEN ACCESS 012216

**Operational Risk Analysis at Agribusiness and Technology Park (ATP) IPB, Bogor, Indonesia**

M. Fauzi Aditra, Popong Nurhayati and Siti Jahroh

[+ Open abstract](#) [View article](#) [PDF](#)





PAPER • OPEN ACCESS

## Electrical Energy Alternative of Magnetic Field Around Wire of Power Line

To cite this article: Yakob Liklikwati *et al* 2021 *J. Phys.: Conf. Ser.* **1764** 012159

View the [article online](#) for updates and enhancements.



**IOP | ebooks™**

Bringing together innovative digital publishing with leading authors from the global scientific community.

Start exploring the collection—download the first chapter of every title for free.

# Electrical Energy Alternative of Magnetic Field Around Wire of Power Line

**Yakob Liklikwati<sup>1\*</sup>, Syafruddin<sup>1</sup>, Givy Devira Ramady<sup>1</sup>, Ninik Sri Lestari<sup>1</sup>, Herawati YS<sup>2</sup>, and Rahmad Hidayat<sup>1</sup>**

<sup>1</sup>Sekolah Tinggi Teknologi Mandala, Bandung, Indonesia

<sup>2</sup>Universitas Kristen Maranatha, Bandung, Indonesia

\*y.liklikwatil@gmail.com

**Abstract.** The electricity crisis can hamper various community or industrial activities. Meanwhile, the magnetic field with a high field strength around the wire and along the power line wire that is passed through a large electric current can be used as a new source of electricity with considerable power. For this reason, efforts are needed to utilize the magnetic field to offer an energy crisis solution. This research applies the magnet-electric law to the toroid core transformer to become a power plant. The simulation is carried out on a toroid transformer with an outer diameter of 11cm, 2.5cm thick, 9cm long which is mounted on a 27A current; 220V or 380V 3Ø. The result can be to turn on a 5W-160V or 10W-65V incandescent or 7W-200V LHE lamps. The value of 27A on the wire does not change due to the utilization of the magnetic field around the electric wire. From the analysis of a linear approach to power lines with larger currents up to several kA, a power of several kW can be generated at 220V. To get more power at a voltage of 220V required more toroidal transformers placed along the power line.

## 1. Introduction

Background of the crisis of electrical energy and electrical energy supply increasingly unable to meet consumers' needs. Their electric power transmission system that uses low voltage, medium or extra high voltage with large electric currents cause the magnetic field around the wire channel high power. Electric current in the wire line electric power it is alternating (ac) which will produce a magnetic flux varies with time can generate the induced voltage in accordance with Faraday's law. The emergence of the pros and cons about the dangers of electro magnetic field radiation in the vicinity of high-voltage wires and extra high,[1]. This study intends to utilize magnetic fields that exist on the power line of low voltage or medium voltage as a source of electrical energy, designing a piece of equipment that can tap magnetic flux that surrounds the wire transmission with the goal of making a power plant alternative based magnetic field is in the range of the transmission line that can generate a voltage of 220 V as a power supply for the public electricity supply in these locations, as well as changing views of people about the dangers of electromagnetic field radiation.[4][8]



## 2. Electromagnetic Fields In Surroundings Wire Channel Power

### 2.1 Basic Electromagnetic

Based on Maxwell's laws and Flemming around electrical wires that electrified will arise surrounding the magnetic field is along the wire and the wire with a magnetic field pattern as in figure 1. The first law of Maxwell say that; "Integral circumference of the magnetic field strength is proportional to the electric current that is on extents terlingkup the circumference of a circle". [1][2]

$$\oint_l H \cdot dl = \int_A J \cdot dA \quad (1)$$

dimana :  $H$  = Magnetic field intensity ( A-t / m )  
 $dl$  = the smallest unit of path length circular  
 $J$  = electric current density ( A/m<sup>2</sup> )  
 $dA$  = The smallest area of the magnetic field

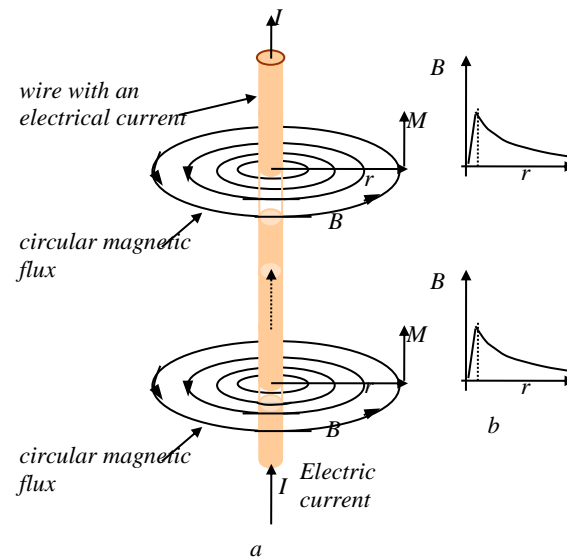


Figure 1, a. Magnetic field on electric a wire or power line .  
 b. Density of the magnetic flux with respect to the radius

Another form of equation 1, a direct relationship with a magnetic field intensity  $H$  in a circular path length  $l = 2\pi.r$ , can be written as

$$2\pi.r.H = N.i \quad (2)$$

In single channel wire or a single wire coil that is  $N = 1$ , then the magnetic field strength at the point  $M$  as far  $r$  from the center point of the wire is

$$H = \frac{N.i}{2\pi.r} = \frac{1}{2\pi.r} \quad (3)$$

If the electricity power lines were installed a toroid is then based on the law of ampere circle where wire line electric current is the primary winding of transformer toroid with the number of winding  $N_1$  is 1 (one) winding wire through which the current  $i$  of the electricity power lines is considered as a

source of magnetic current or known as forced magnetomoti (mmf) has a direct relationship with a strong magnetic field  $H$  in a circular path length  $l = 2\pi.r$ , can be written as [3][4]

$$2\pi.r.H = N_1.i_1 \quad \text{atau}$$

$$H = \frac{N_1.i_1}{2\pi.r} = \frac{1}{2\pi.r} \quad (4)$$

Based on law induction voltage of Faraday's, the voltage induction generated at the primary side of the transformer toroid in the general form is [1][6][9]

$$e_1 = N_1 \cdot \frac{d\phi}{dt} \quad (5)$$

$$\text{or} \quad e_1 = \mu_o \cdot \mu_r \cdot H_1 \cdot A \cdot N_1 \cdot \cos \omega t \quad (6)$$

by ignoring the loss factor and the other, then in the same may as on the primary side, the induced voltage is generated in the secondary side of the transformer toroid in the general form is, [6][9]

$$e_2 = N_2 \cdot \frac{d\phi}{dt} \quad (7)$$

$$\text{or} \quad e_2 = \mu_o \cdot \mu_r \cdot H_2 \cdot A \cdot N_2 \cdot \cos \omega t \quad (8)$$

When loads such as incandescent lamps, with a rated power  $P_2^*$ , and the voltage  $V_2^*$ , lamp resistance is

$$R_B = \frac{(V_2^*)^2}{P_2^*} \quad (9)$$

The load current on the secondary side of the transformer is

$$I_2 = \frac{V_2}{R_B} = \frac{V_2 \cdot P_2^*}{(V_2^*)^2} \quad (10)$$

If the ratio of toroid winding and primary power line is

$$N_2 \cdot \frac{V_2 \cdot P_2^*}{(V_2^*)^2} \cdot k = N_1 \cdot I_1 \quad (11)$$

where:  $V_2$  is the voltage that occurs at the secondary side in a state burdened  
 $I_1$  is current on the primary in a state burdened

Then, if we want to determine how much power the load (lights) can be supplied with a voltage  $V_2$  equal to the rated voltage of 220 volt lights, then the equation is

$$P_2^* = \frac{N_1 \cdot I_1 \cdot (V_2^*)^2}{N_2 \cdot V_2 \cdot k} = \frac{N_1 \cdot I_1 \cdot 220}{N_2 \cdot k} \quad (12)$$

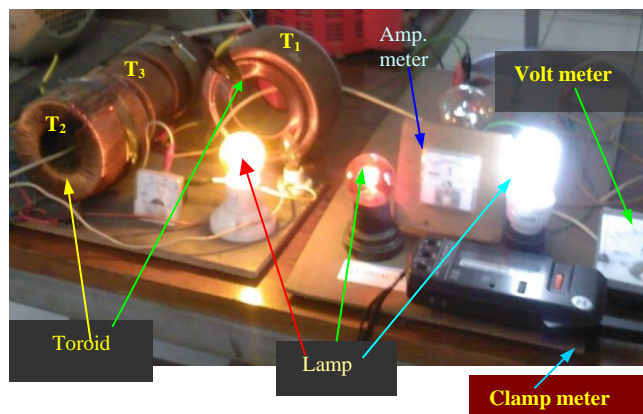
It means that to supply the load with power  $P_2^*$  at a voltage of 220 volts required primary current (current on power line) that is equal to  $I_1$ ,

$$V_2 = \frac{N_1 \cdot I_1 \cdot (V_2^*)^2}{N_2 \cdot P_2^* \cdot k} \quad (13)$$

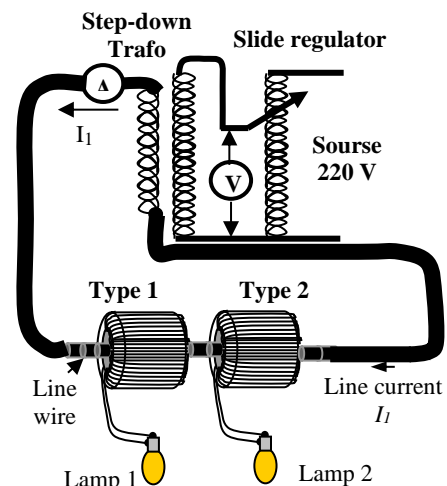


### 3. Simulations Experiment

In this research used two kinds of toroidal sizes are: Type 1 with a core size of the outside diameter (D) 11 cm, thickness (T) of 2.54 cm, length (L) 9 cm, the maximum output voltage of 240 V, the number of windings ( $N_2$ ) 250, and type 2 with size D = 9 cm, T = 2.5 cm, L = 8cm, the number of windings ( $N_2$ ) 250 for comparison. See figure 3. Load the secondary form varies the 5W incandescent lamp, 10 W, 25W, 40 W, 60 W and Electronic TL 7W and 15W. [4][7]. Experiment circuits are shown in figures 2 and 3



**Figure. 2:** Photo of circuit of Toroid system, in lab



**Figure. 3:** The Circuits of experiments 2

#### 3.1 Experiment 1

Experiment 1, is intended to determine the magnitude and ability of the magnetic field energy produced by electric current  $I_1$  on the cable to turn on lamps with different power sizes and voltage values generated in the lamp. Technically it is: wire lines as the main power source with a constant load in the form of 17 kW 3-phase electric motors. Using toroid type 1 and type 2 which are installed alternately on a single phase wire, that is in Figure 2. (results see tables 1 and 2).

#### 3.2 Experiment 2

Variable of line current, is intended only to determine how much current  $I_1$  to be flowing in the wire line electric power (on primary side) so that each lamp can light normally at a voltage of 220 V on the secondary side of the toroid.

#### 3.3. Experiment Results

For the first experiment are shown in Table 1 and 2. And to experiment 2 are shown in Table 3. The experimental results that the primary burden in the form of three phase motors in a normal running state shown in tabel1, Toroid type 1. Load of toroida is (a) incandescent lamp as <sup>a</sup> and (b) Electronic TL as <sup>b</sup>

3.3.1. The results of the experiments 1a, with current  $I_1$  are the value of the 3-phase motor current as a load of the primary power line, and using toroid type 2 are shown in table 1

**Table 1.** is the result by Using Toroid type 2

Lamp (W)	Volt.of Lamp (V)	$I_1$ (A)	Description
5 W <sup>a</sup>	160	27	dim
10W <sup>a</sup>	60	27	dim
7W <sup>b</sup>	200	27	bright

3.3.2. The results of the experiments 1b , with current  $I_1$  are the value of the motor starting current as a load of the primary power line, dan using toroid type 1 are shown ini table 2

**Table 2.** Results of the experiments , with current  $I_1$  are the value of the motor current

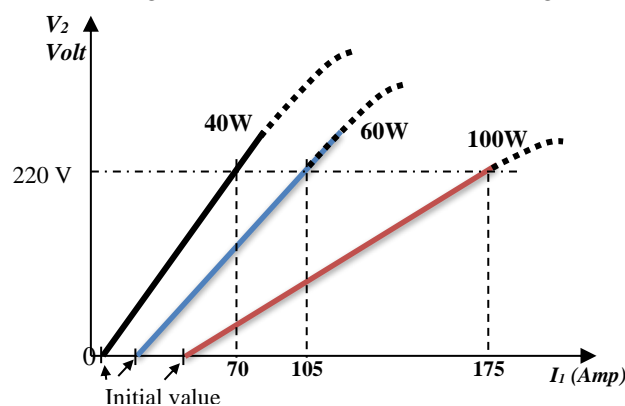
Load	Lamp (W)	$I_1$ (A)	$V_{L1}$ (V)	Description
	10W <sup>a</sup>	80	230	bright
	40W <sup>a</sup>	80	225	bright
	60W <sup>a</sup>	80	165	dim
	15W <sup>b</sup>	80	>250	explode

3.3.3. The results of the experiments 2, Variable of line current , is intended only to determine how much current  $I_1$  to be flowing in the wire line electric power (on primary side) so that each lamp can light normally at a voltage of 220 V on the secondary side of the toroid. The secondary (low voltage) short circuited with a long wire as the primary line current  $I_1$ , by using slide regulator to obtain the amount of current that can be set, see figure 3 and the results can be seen in table 3.

**Table 3.** The results of the experiment 2, with variable line current, using the toroid type 1

Load	Lamp (W)	$I_1$ (A)	Lamp voltage (V)	Description
	40W <sup>a</sup>	70	220	bright
	60W <sup>a</sup>	105	220	bright
	100W <sup>a</sup>	175	220	bright

Thevalue of the current in table 3 above is the large excitation current is required to flow on the wires of electricity to power the lights burden toroid size or type 1 at the price of normal voltage of 220 volts It can be analyzed through the characteristic curve current wires primer  $I_1$  and toroid load voltage  $V_L$  for some great nominal wattage of incandescent bulbs following



**Figure 4.** Curve  $I_1 - V_L$  on the value of different loads

The dashed line is the possible voltage that can occur and curved lines caused by saturation of the toroid core. Results of experiments using toroidal type 1 ( $T_1$ ), type 2 ( $T_2$ ) and type 3 ( $T_3$ ), using a set of images and slide regulator fig.3 single phase system as a variable voltage source, shown in table 3

#### 4 Discussion

From table 1 with a load of secondary that incandescent lamps 5W, the light is dimmed with a voltage of 160 V, the current ( $I_1$ ) 27 A, an incandescent bulb 10 W, the light is dimmed by the voltage 65 V, is still on the current ( $I_1$ ) 27 A, whereas with Electronic TL 7W bulbs, lights brightly with a voltage of 200 V, and the current ( $I_1$ ) is still at the same value at 27 A; meaning there is no change in the current

flow in primer power line due to the load change of the toroid transformer secondaries. In table 2 with incandescent light load on the flow channel 80 A , 10 W lamps can be lit up very bright and 40 W lamps also brightly , while the 60 W lamp dimly. In table 3 with toroid transformer type 1, shows that to light a 40W incandescent lamp at a voltage of 220 V necessary flow channel 70 A, 60 W lamps need to current 105 A, and 100W lamps need current 175 A.

## 5. Conclusion

Alternative energy can be obtained through the use of magnetic field energy that is along the power lines using toroids. From the analysis through a linear approach that in power lines with larger currents up to hundreds of amperes can be obtained power up to several kilowatts at 220V. And the more toroids installed along the power line, the more new electrical energy will be obtained.

The greater the electric current flowing in the wire, the greater the energy produced by the magnetic field around the wire with the highest magnetic field intensity located at the nearest radius of the electric power line.[2]

## 6. Suggestion

Further study on power lines with larger electric currents, it is necessary to design toroidal core transformers with larger sizes. The use of more transformers to be installed in rows on long electric cables in a three-phase system, to ensure there is no influence of the use of the magnetic field along the wire line on current, voltage and power in this main power line.

## References

- [1] Carlson A Bruce and Gisser David G 1981. *book Electrical Engineering concepts and Application* ed Tom Robins USA (Addison-Wesley Series in Electrical Engineering publication) vol 1, pp 627–642
- [2] John Carl T A 1988. *Engineering Electromagnetic Field and Waves* (publish by John Wiley and Son) vol 1 chapter 2 pp 78–92
- [3] Seippel Robert G 1997. *Fundamental Of Electricity Basics of Electricity, Electronics, Controls and Computers* ed copyright by American Technical Society, vol 6 2th print Chapter 7 pp 98–101 and chapter 11 pp 219–222
- [4] Leach Donald P 1976 *Basic Electric Circuit* (Coppy by John Wiley and Sons Los Altos Hills, California: New York /Chichester/Brisbane/Toronto/Singapore ) vol 2 chapter 11 pp 248–291
- [5] Hidayat Rahmad, Fauzi Fachrul Rezka, Yakob Liklikwatil 2019. *Analysis of 4G Data Service Quality* (Journal of Physics: Conference Series, publishing by IOP ) vol 1175 issu 1 pp 012126
- [6] Liklikwatil Yakob 2014. *Mesin Mesin Listrik* ed Herlambang Rrahmadhani and Ika Fatria Iriyanti (publisher Deepublish, Yogyakarta), vol 1, chapter 1 pp 2-4 and chapter 10 pp 198-199
- [7] EMC Test Systems, 2001. *Helmholtz Coil Manual*
- [8] Hidayat R, Liklikwatil Yakob, Setiawan Hamdani, Santoso S, Lestari Ninik Sri 2017. *Antena Cerdas untuk Mitigasi Interferensi dengan Algoritma Least Mean Square*. (Setrum: Sistem Kendali-Tenaga-Elektronika-Telekomunikasi-Komputer vol 6) pp.97–105
- [9] Fitzgerald A E, Kingsley Jr Charles, Umans Stephen D 1983 *Handbook on the Electric Machinery* ed T. Michael Slaughter and David A.Damstra, McGRAW-HILL International Book Company, Intrnational Student Edition (Auckland: Bogota Guetemala Hamburg Johannesburg Lisbon London Madrid Mexico New Delhi Panama Paris San Juan Sao Paulo Singapore Sydney Tokyo), vol 6, chapter 1 pp 1-37

## Acknowledgments

Finally, the authors are grateful for moral encouragement and support, the direction of writing international journals from the STT Mandala Research Institute, and special staff of technical staff and financial support from friends so that this journal / article can be completed