

ACTA INFORMATICA MEDICA

JOURNAL OF ACADEMY OF MEDICAL SCIENCES OF BOSNIA AND HERZEGOVINA



OFFICIAL JOURNAL OF
THE EUROPEAN FEDERATION FOR
MEDICAL INFORMATICS



YEAR 2018 • VOLUME 26 • ISSUE 1

pISSN 0353-8109
eISSN: 1986-5988

Editorial Board



LEJLA ZUNIC
Editor-In-Chief
[ORCID ID](#) | [SCOPUS ID](#)



IZET MASIC
Scientific Editor
[ORCID ID](#) | [SCOPUS ID](#)



EDIN BEGIC
Statistical Editor
[ORCID ID](#) | [SCOPUS ID](#)



JOHN MANTAS
Research Integrity Editor
[ORCID ID](#) | [SCOPUS ID](#)



MIRZA HAMZIC
Technical Editor

International Advisory Board

Theodoros N. Arvanitis (Coventry, United Kingdom, [ORCID ID](#), [Scopus Author ID](#)), Andrew Balas (Bethesda, USA, [ORCID ID](#), [Scopus Author ID](#)), Marion Ball (Baltimore, USA, [ORCID ID](#), [Scopus Author ID](#)), Rolf Engelbrecht (Munich, Germany, [ORCID ID](#), [Scopus Author ID](#)), Kemal Hakan Gulkesen (Antalya, Turkey, [ORCID ID](#), [Scopus Author ID](#)), Arie Hasman (Amsterdam, The Netherlands [ORCID ID](#), [Scopus Author ID](#)), Jacob Hofdijk (Amsterdam, The Netherlands [ORCID ID](#), [Scopus Author ID](#)), Fatema Jawad (Karachi, Pakistan, [ORCID ID](#), [Scopus Author ID](#)), Josipa Kern (Zagreb, Croatia, [ORCID ID](#), [Scopus Author ID](#)), Asim Kurjak ([Scopus Author ID](#)), Simon de Lusignan (London, UK, [ORCID ID](#), [Scopus Author ID](#)), Valentina Markusova (Moscow, Russian Federation, [ORCID ID](#), [Scopus Author ID](#)), Oleg Mayorov (Kiev, Ukraine, [ORCID ID](#), [Scopus Author ID](#)), George Ioan Mihalas (Temesoara, Romania, [ORCID ID](#), [Scopus Author ID](#)), Haris Pandza (Sarajevo, Bosnia and Herzegovina, [ORCID ID](#), [Scopus Author ID](#)), Besim Prnjavorac (Zenica, Bosnia and Herzegovina, [ORCID ID](#), [Scopus Author ID](#)), Ali Rashidi (Urmia, Iran, [ORCID ID](#), [Scopus Author ID](#)), Zekerijah Sabanovic (Tuzla, Bosnia and Herzegovina, [ORCID ID](#), [Scopus Author ID](#)), Nizama Salihefendic (Tuzla, Bosnia and Herzegovina, [ORCID ID](#), [Scopus Author ID](#)), Ferancesco Sicurello (Milan, Italy, [ORCID ID](#), [Scopus Author ID](#)), Michael Shifrin (Moscow, Russian Federation, [ORCID ID](#), [Scopus Author ID](#)), Gaj Vidmar (Ljubljana, Slovenia, [ORCID ID](#), [Scopus Author ID](#)), Patrick Weber (Geneva, Switzerland, [ORCID ID](#), [Scopus Author ID](#))

Publisher

Academy of Medical Science in Bosnia and Herzegovina ([http:// www.actainformmed.org](http://www.actainformmed.org); <http://www.amn.ba/>); E-mail: amnubih@lol.ba; amnubih@gmail.com.

Abstracted and indexed

PubMed, PubMed Central, Scopus, EMBASE, EBSCO, DOAJ, Ulrich's Periodicals Directory, CAB abstracts, Global Health, ProQuest, VINITI of RAS.

Current Issue

JavaScript Algorithm for Quantifier Elimination in Epidemiology

Inda Kreso

ACTA INFORM MED:2018; 26-4: 280-283

[PDF - FULL TEXT](#) | DOI: 10.5455/aim.2018.26.280-283

The Second Mediterranean Seminar on Science Writing, Editing and Publishing (SWEP - 2018), Sarajevo, December 8th, 2018

Izet Masic, Miro Jakovljevic, Osman Sinanovic, Srecko Gajovic, Mirko Spiroski, Rasim Jusufovic, Sekib Sokolovic, Besim Prnjavorac, Enver Zerem, Benjamin Djulbegovic, Selma Porovic, Slobodan Jankovic, Mirsad Hadzikadic, Lejla Zunic, Edin Begic, Edin Nislic, Nedim Begic, Emir Becirovic, Anis Cerovac, Venesa Skrijelj, Jasmina Nuhanovic

ACTA INFORM MED:2018; 26-4: 284-299

[PDF - FULL TEXT](#) | DOI: 10.5455/aim.2016.24.284-299

Importance of Acta Informatica Medica Journal in Spreading of Biomedical Informatics Knowledge and Experiences in Scientific and Academic Community

Lejla Zunic, Izet Masic

ACTA INFORM MED:2018; 26-4: 228-229

[PDF - FULL TEXT](#) | DOI: 10.5455/aim.2018.26.228-229

Development of an Evaluation Framework for Health Information Systems (DIPSA)

Antonis Stylianides, John Mantas, Zoe Roupas, Edna N. Yamasaki

ACTA INFORM MED:2018; 26-4: 230-234

[PDF - FULL TEXT](#) | DOI: 10.5455/aim.2018.26.230-234

The Comparison Between Different Immunoassays for Serum Carbohydrate Antigen (CA 19-9) Concentration Measurement

Nafija Serdarevic

ACTA INFORM MED:2018; 26-4: 235-239

[PDF - FULL TEXT](#) | DOI: 10.5455/aim.2018.26.235-239

Isolation, Characterization and Proliferation of Cancer Cells from Breast Cancer Patients

Wahyu Widowati, Yusuf Heriady, Dian Ratih Laksmiawati, Diana Krisanti Jasaputra, Teresa Liliana Wargasetia, Rizal Rizal, Fajar Sukma Perdana, Annisa Amalia, Annisa Arlisyah, Zakiyatul Khoiriyah, Ahmad Faried, Mawar Subangkit

ACTA INFORM MED:2018; 26-4: 240-244

[PDF - FULL TEXT](#) | DOI: 10.5455/aim.2018.26.240-244

Identifying and Prioritizing of Data Elements for the Ophthalmology Health Smart Card

Ahmadreza Shamsabadi, Reza Safdari, Marjan Ghazisaeedi, Jebraeil Farzi, Tayebeh Noori, Esmaeil Mehraeen

ACTA INFORM MED:2018; 26-4: 245-248

[PDF - FULL TEXT](#) | DOI: 10.5455/aim.2018.26.245-248

Biocompatibility of Yttria-Tetragonal Zirconia Polycrystal Seeded with Human Adipose Derived Mesenchymal Stem Cell

Arif Rachman, Fedik A. Rantam, Indra Bachtiar, Fatchiyah Fatchiyah, Lukman Hakim, Indri L. Putri, Latief Mooduto

ACTA INFORM MED:2018; 26-4: 249-253

[PDF - FULL TEXT](#) | DOI: 10.5455/aim.2018.26.249-253

Molecular Docking for Active Compounds of Scurulla Atropurpurea as Anti-inflammatory Candidate in Endometriosis

Cut Yuniwati, Nurlaili Ramlil, Eva Purwita, Yusnaini Yusnaini, Nurdahlana Nurdahlana1, Ampera Miko, Intan Liana, Andriani Andriani4, Maharani Maharani

ACTA INFORM MED:2018; 26-4: 254-257

[PDF - FULL TEXT](#) | DOI: 10.5455/aim.2018.26.254-257

Intelligent Computer Systems for Multiple Sclerosis Diagnosis: a Systematic Review of Reasoning Techniques and Methods

Leila Akramian Arani, Azamossadat Hosseini, Farkhondeh Asadi, Seyed Ali Masoud, Eslam Nazemi

ACTA INFORM MED:2018; 26-4: 258-264

[PDF - FULL TEXT](#) | DOI: 10.5455/aim.2018.26.258-264

1 2 Next »

Isolation, Characterization and Proliferation of Cancer Cells from Breast Cancer Patients

Wahyu Widowati¹, Yusuf Heriady², Dian Ratih Laksmiawati³, Diana Krisanti Jasaputra¹, Teresa Liliana Wargasetia¹, Rizal Rizal⁴, Fajar Sukma Perdana⁴, Annisa Amalia⁴, Annisa Arlisyah⁴, Zakiyatul Khoiriyah⁴, Ahmad Faried⁵, Mawar Subangkit⁶

¹Medical Research Centre, Faculty of Medicine, Maranatha Christian University, Bandung, West Java, Indonesia

²Faculty of Medicine, Bandung Islamic University, Bandung, Indonesia

³Faculty of Pharmacy, Pancasila University, Jakarta, Indonesia

⁴Biomolecular and Biomedical Research Centre, Aretha Medika Utama, Bandung, West Java, Indonesia

⁵Department of Neurosurgery and Stem Cell Working Group, Faculty of Medicine, Universitas Padjadjaran-Dr. Hasan Sadikin Hospital, Bandung, West Java, Indonesia

⁶Laboratory of Veterinary Pathology, Faculty of Veterinary Medicine, Bogor Agricultural University, Bogor, Indonesia

Corresponding author: Dr. Wahyu Widowati. Maranatha Christian University. Jl. Prof drg. Suria Sumantri No.65, Bandung, 40164, West Java, Indonesia. Phone: +6222-2015097. E-mail: wahyu_w60@yahoo.com. ORCID ID: <http://www.orcid.org/0000-0002-5401-7794>.

doi: 10.5455/aim.2018.26.240-244

ACTA INFORM MED. 2018 DEC 26(4): 240-244

Received: Sep 17, 2018 • Accepted: Nov 19, 2018

© 2018 Wahyu Widowati, Yusuf Heriady, Dian Ratih Laksmiawati, Diana Krisanti Jasaputra, Teresa Liliana Wargasetia, Rizal Rizal, Fajar Sukma Perdana, Annisa Amalia, Annisa Arlisyah, Zakiyatul Khoiriyah, Ahmad Faried, Mawar Subangkit

This is an Open Access article distributed under the terms of the Creative Commons Attribution Non-Commercial License (<http://creativecommons.org/licenses/by-nc/4.0/>) which permits unrestricted non-commercial use, distribution, and reproduction in any medium, provided the original work is properly cited.

ABSTRACT

Introduction: The most cases of cancer death, which are in the first ranks among cancers suffered by women is breast cancer. The breast cancer therapy for patients has been done, but still not optimal, so it is necessary to understand the mechanism of therapy in model cell of breast cancer. **Aim:** This study aims to develop an isolation technique of breast cancer cell from patients as a cancer cell model. **Material and Methods:** Breast cancer cell isolation is performed by enzymatic methods using the collagen I and hyaluronidase. Then, breast cancer cells were characterized using flow cytometry based on the CD44/CD24 expression where MDA-MB468 and MCF-7 breast cancer cell lines were used as positive controls. Estrogen receptor (ER), progesterone receptor (PR), p53, HER2, and Ki67 expression were assessed using an immunohistochemistry assay. **Result and Discussion:** The morphology of cancer cells was fibroblast like cells on the day 7th after isolation. Isolated breast cancer cells expressed 95.33±0.47% of CD44⁺CD24⁺ and human epidermal growth factor receptor 2 (HER2) low expressions. Isolation of breast cancer cells can use In-house enzymatic protocol. Isolated breast cancer showed the same expression as MDA-MB468 (CD44⁺CD24⁺) and HER2⁻ compared to MCF-7 cell lines (CD44⁺CD24⁺). **Conclusion:** These cells belonged to a basal type of breast carcinoma and expressed CD44⁺/CD24⁺, then isolated BCCs can be used as model cancer cells for further research.

Keywords: breast cancer, cell lines, CD44 antigen, CD24 antigen, enzymatic assay.

1. INTRODUCTION

Breast cancer is the first rank among cancers suffered by woman causing death. It often occurs recurrence after treatment (1). In the Asia-Pacific, nearly a quarter of the population of women were diagnosed with breast cancer (24%), with the largest percentage occurring in China (46%), Japan (14%), and Indonesia (12%). The type of cancer in Indonesia is dominated by breast cancer (30%) and cervical cancer (24%) (2).

Breast cancer classification was based on different parameter, i.e.: tumor grade, lymph node status, histological type, the presence of estrogen receptor (ER) and human epidermal growth factor receptor 2 (HER2). Molecular profiling proved that breast cancer could be classified into: normal, basal, luminal A, luminal B and HER2 based on ER α , progesterone receptor (PR) and HER2 expression in immunohistochemical assay (3). MDA-MB453 is HER2⁺ type which expresses high Ki67

(4), while MDA-MB-468 is a basal type with ER⁻, PR⁻ and HER2⁻ expression and MCF7 is luminal A type with of ER⁺, PR⁺ and HER2⁻ expression (5).

Breast cancer treatment depends on the stadium of breast cancer. Therefore, the selection of therapy at each stadium of the cancer is different (6). Surgery and chemotherapy are types of cancer therapy, which is effective to treat breast cancer (7). But, surgical therapy is costly and high risk of infection during surgery, as well as patient complaints regarding cosmetics (8). Chemotherapy can destroy normal cells and cause side effects, including: neutropenia, anemia, thrombocytopenia, alopecia, mucositis (8). The cell line is the most important factor in studying therapeutics target, carcinogenesis, and signal pathways for breast cancer (9).

2. AIM

The cell line of study is based on its biological aspects. Hence, research needs to be done on breast cancer iso-

lation. Therefore, it is essential to have isolated breast cancer cells from breast cancer patient as a cancer cell model in order to determine the effective cancer therapy.

3. MATERIAL AND METHOD

Sample Preparation

The sample was the tissue from breast cancer patients 52 years old with ductal carcinoma mammae sinistra grade III and invasive to lymphovascular. The informed consent used the guidelines approved by the Institutional Ethics Committee collaboration between Maranatha Christian University, Bandung, Indonesia and Immanuel Hospital Bandung, Bandung, Indonesia. Tissue was then washed using phosphate buffer saline (PBS 1x, Gibco 1740576) and preserved in the transfer medium consist of PBS 1x + 1% Abam (Gibco, 1772653) + 1% Amphotericin B (Gibco, 15290026) + 0.1% Gentamicin (Gibco, 15750060) before being isolated (10).

Breast Cancer Cell Isolation

Medium preparation: Dulbecco's Modified Eagle Medium (DMEM, Gibco 11995065) : F-12K (Sigma, I6634) (1:1), 5% Fetal Bovine Serum (FBS, Gibco, 10270106), 1% Antibiotic-antimycotic (Gibco, 1772653), 1% Amphotericin B (Gibco, 15290026), 0,1% Gentamicin (Gibco, 15750060) were dissolved then filtered using Syringe Filter PES 0, 22µm (TPP, 99722). Enzyme preparation: Collagenase Type I (Gibco, 10114532) 4 mg/ml, hyaluronidase 1 mg/ml, Trypsin 0,1% (Gibco, 25200072) were dissolved in basal medium that consists of DMEM: F-12K (1:1), then filtered using syringe filter 0,22 µm PES (TPP, 99722).

Cells Isolation: Prepare a surgical device, PBS 1x and sterile petri dish. The tumor tissue was washed with PBS 1x on a petri dish and then cut it into small pieces using surgical scalpel. The sample fragments were washed again with PBS 1x (Gibco, 1740576), inserted into a 50ml falcon tube (TPP, 91050) containing the mixed enzyme solution and then incubated 16 hours, 300 rpm, 37 °C, 5% CO₂. After incubation sample was filtered using 100 µm cell strainer (Corning, 431752) then centrifuged at 1600 rpm for 10 minutes. Supernatant was discarded and the pellet was washed with PBS 1x and centrifuged at 1600 rpm for 5 minutes. The pellet was then resuspended with the complete growth medium. The cell suspension was next incubated at 37°C, 5% CO₂ (modified method from 10).

Breast Cancer Cells Characterization

Breast Cancer Cells (BCCs) at P3 were characterized using flowcytometry (Macsquant, Analyzer 10) for positive and negative markers of breast cancer cells at density 1x10⁵ cells/tube. The cells were then stained with CD44 and CD24 according to manufacturer protocol (Biolegend kit, 338804/311118). The experiments and measurements of surface marker were performed in triplicate (11).

Proliferation Assay

BCC was cultured in medium consisting of DMEM: F-12K (1:1), 5% FBS, 1% Antibiotic-antimycotic, 1% Amphotericin B, 0,1% Gentamicin and the medium was replaced every 3 days. 3 x 10⁵ cells were seeded on T25 flask and cultured in complete medium until reaching confluence 80% around 3 days for proliferation assay. Briefly, cultured cells was detached using trypsin (Gibco, 25200072), then incubated for 1-3 minutes at 37°C, complete medium was added

to neutralize trypsin and the detached cells were centrifuged (MPW-2000) at 1600 rpm for 5 min at room temperature. The cell pellet was resuspended with trypan blue solution (Sigma, 25200072) and diluted in 1:1 dilution. Then, cells were counted using a haemocytometer (Neubauer, 17849). Population Doubling (PD) was counted at every passage with the formula:

$$PD = [\log_{10}(NH) - \log_{10}(NI)] / \log_{10} 2$$

NI is the inoculum cell number and NH is the cell harvest number. Then, to determine cumulative PD data by added the PD at the previous passage.

The PD time (PDT) was determined by the formula (11).

$$PD \text{ time} = t (\text{time}) / PD (\text{in days})$$

Immunohistochemistry (IHC) Analysis

Breast cancer cells were processed using anti-S727p-STAT3 (BD Biosciences), anti-CA-IX and anti-EGFR (clone 31G7, Zymed Technologies, Invitrogen, Burlington, ON) protocols. The Idetect Ultra HRP Detection System (ID Labs Inc, London, Ontario) was used to visualize. Counterstaining was performed with Gill modified hematoxylin (Harleco®) (12).

Statistical Analysis

Statistical analysis was conducted using SPSS software (version 20.0). Data were presented as Mean ± Standard Deviation. Significant differences among treatments were determined using the one-way Analysis of variance (ANOVA) and p < 0.05 were considered as statistically significant, along with Turkey honestly significant difference post hoc test and 95% confidence interval. Z score values were used for plotting the protein expression based on immunohistochemistry signal. Clustering methods based UPGMA statistical analysis were performed by R software ver.3.4.3.

4. RESULTS

Isolation of BCCs with enzymatic method

BCCs were successfully isolated using an enzymatic method and cultured until passage 9. The cells attached to the surface of the plastic disc a day after seeding (P0) and were maintained up to two weeks. The cells showed short fibroblastic-like morphology in growth medium and there were still blood cells at the beginning of P0 (Figure 1A). From the first passage onwards, particularly at P1, P2, P3, the cells in

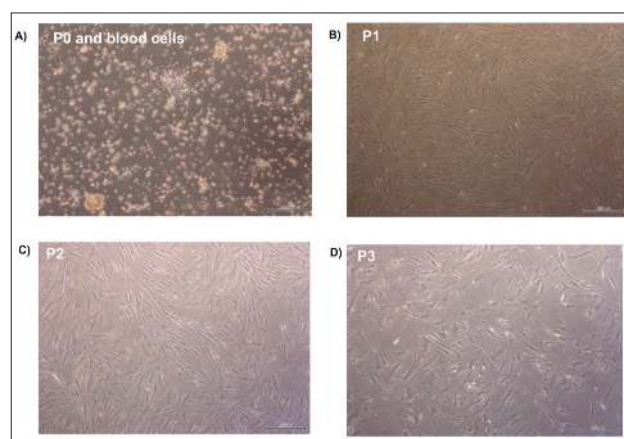


Figure 1. The morphology of breast cancer cells in the different passages. (A) BCCs at P0 and blood cells. (B) BCCs at P1. (C) BCCs at P2. (D) BCCs at P3. Magnification 40x. Scale Bars: 500µM.

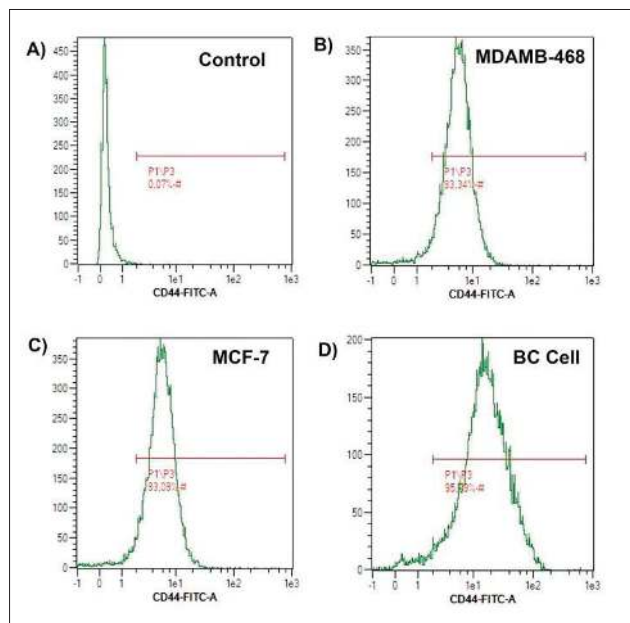


Figure 2. Density plot CD44 expressions in the unstained cell as a control (A), MDAMB-468 cell (B), MCF-7 cell (C), and breast cancer cell/BC cell (D)

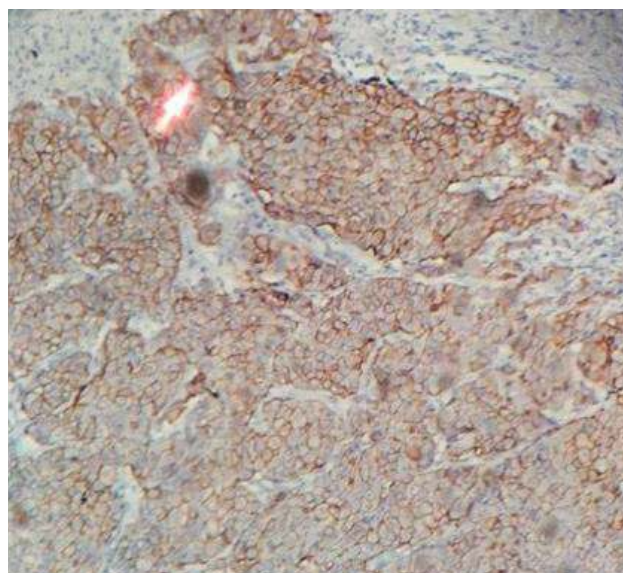


Figure 4. Immunoprofile of breast tissue from breast cancer patient. Immunohistochemistry result of HER2 expression in breast cancer.

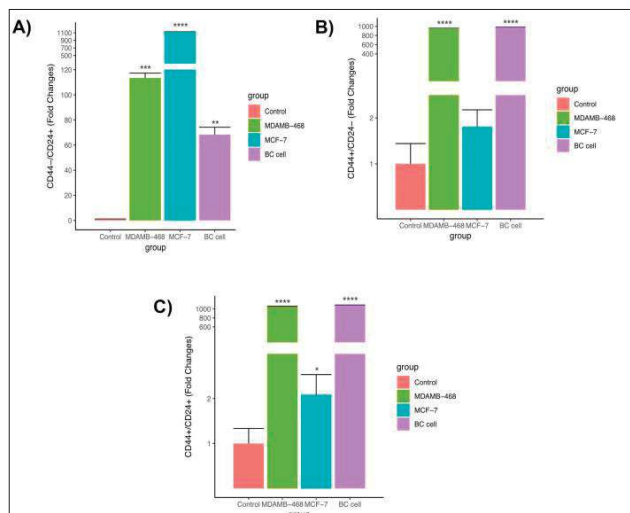


Figure 3. Expression of CD44-/CD24+ cell (A), CD44+/CD24- cell (B) and CD44+/CD24+ cell (C) characterization in breast cancer cell (BC cell) compared to MCF-7 cell lines and MDAMB-468 cell lines. Significance difference with p value p<0.05

growth medium changed their shape into long fibroblast cells (Figure 1B-1D).

Characteristic of Breast Cancer Cells

The flow cytometry analysis displayed the biological properties of BCCs, which was compared to MDA-MB468 and MCF-7 as cells control. BCCs showed a highest CD44⁺ cell intensity expression compared to the MCF-7 cell line, but had no significant difference with MDA-MB468. The intensity of CD44⁺ in most cells around 1e1 (log1) (Figure 2). However, MDA-MB468 and BCCs had a lower number of CD44⁺/CD24⁺ cells than MCF-7. On the other hand, CD44⁺/CD24⁻ and CD44⁺/CD24⁺ of BCCs and MDA-MB468 were higher than MCF-7 (Figure 3).

Population Doubling Time of Breast Cancer Cells

PDT and PD rate were used to evaluate the breast cancer cell proliferation capacity. PDT is the time needed by cell to divide into two cells. According to the results shown in

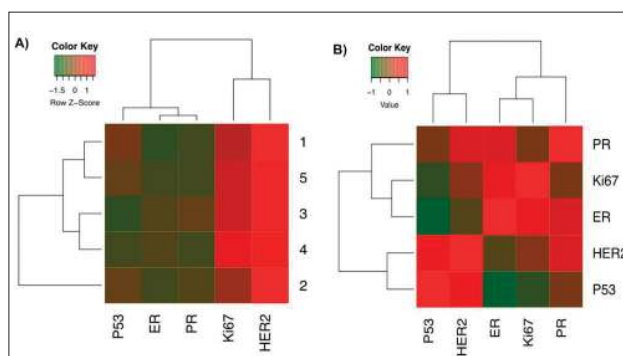


Figure 5. Gene Correlation Analysis (A) Heatmap protein expressions in breast cancer were analyzed by immunohistochemistry. (B) heatmap correlation graph by "Pearson" analysis in five surface protein expressions

Table 2, BCCs suggested high PDT at early P2 and P3 around 21.38±1.34 and 18.10±1.69 respectively compared to late passages (P7 and P8). It could be seen that BCCs reduced their PDT after every passaging (Table 1).

Immunohistochemistry (IHC) and Gene Correlation Analysis

IHC analysis was identified for immunoprofile of breast tissue from breast cancer patient (Figure 4). This procedure was performed to double check flow cytometry analysis of isolated BCCs in order to determine the molecular classification of cancer cell subtype. Five gene analysis (p53, ER, PR, Ki67, HER2) using an IHC staining method showed that HER2 was the strongest upregulated gene expression followed by Ki67 and other genes were down regulated (Figure 5A). In contrast, DeFazio-Eli et al. (2011) and Holliday and Speirs (2011) reported that MDA-MB468 suggested very low level of HER2. In a gene correlation analysis using Pearson method, HER2 had a high positive correlation with p53, PR, ER and low positive correlation with Ki67 (Figure 5B).

5. DISCUSSION

There are two kinds of breast cancer, namely ductal and lobular carcinoma that attack the milk duct and the milk producing gland respectively (13). Breast cancer therapy, which

has existed is still not optimal. Surgery therapy was costly and has a risk of infection during surgery (8). It also often occurs recurrence after treatment (1). Chemotherapy also has not shown optimal results, because the chemicals also target normal cells in the body, so that they can harm cells in the body. This causes new issues are alternative therapy is needed to determine the mechanism and causes of breast cancer. Therefore, to understand the mechanism in breast cancer cell, model cell is needed. Even though utilization of cell lines models cell for most the basic research, they are already engineered for some reasons which may not clinically related to the population of breast cancer.

The morphology of isolated BCCs at P0 show different shape compared to BCCs at P1 onwards. This is caused by the adaptation ability of isolated BCCs in a new environment. Since isolated BCCs have not only similar biological properties to MDA-MB468 but also its morphology like fibroblast cells (14). Isolated BCCs seem to keep with a good state in fibroblast like morphology at each passage.

This study uses MCF 7 and MDA-MB468 as a comparison because both cell lines are breast cancer cell lines, MCF7 is the luminal type with ER⁺ and PR⁺ and MDA-MB468 is the basal type with ER⁻, PR⁻ and HER2⁻ breast cancer cell line (5). IHC analysis suggests that isolated BCCs are the basal type of breast cancer cell. This finding highlights the importance of classifying isolated BCCs based on molecular classification using IHC assay and surface marker expression using flow cytometry analysis into consideration of clinical cancer therapy.

The isolated BCCs express low HER2 expression and high Ki67 expression based on IHC analysis. It is in line with research from DeFazio-Eli et al. that MDA-MB468 cell line has also very low levels of HER2. Also, Holliday and Speirs (3) mention that MDA-MB468 is a basal type because this cell line has ER⁻, PR⁻ and HER2⁻ and high Ki67 characteristic around 20%. Ki67 expression ranging under 50%, while cancer cell lines ranging from 20%-100% is one explanation of striking differences between cell lines and isolated primary tumor cell (9). The similarities between basal and triple-negative phenotypes cannot guarantee the type of breast cancer. In line with recent studies, there is still no convincing that triple negative is a feature of basal type cancer (15). Therefore, our finding can be assumed that isolated BCCs have the same characteristics as MDA-MB468 according to IHC assay and flow cytometry analysis.

According to the results shown in Table 2, breast cancer cell proliferation in the second passage need 21 days to doubling their population. While in the third and fourth passage need 18 day and 13 day to doubling their population respectively. In earlier passages, the cell takes time to proliferate because it adapts to the new environment, however, in the next passage the cell has adapted well and high proliferate. Furthermore, doubling time in cancer cells is faster than other cells isolated from human it is because cell cancer is a malignant cell that has a fast proliferation time than normal cells. It is supported by Liu et al. (16) she states that malignant cells have faster doubling times compared to other normal cells. The doubling time for MDA-MB468 (ATCC) should be 30-40 hours (17), while in this study PDT is 5,73 days in passage 8. This indicates that the isolated cells had a lower proliferation rate compared to MDA-MB468.

6. CONCLUSION

This study concludes that BCCs could express CD44+/CD24+, then expected act as model cancer cells effectively.

- **Acknowledgment:** This research was financially supported by the *Ministry of Research, Technology and Higher Education* of the Republic of Indonesia and for research grant 2018 (Penelitian Dasar Unggulan Perguruan Tinggi). This research was also supported by Al Ihsan Hospital, Bandung also Aretha Medika Utama Biomolecular and Biomedical Research Center, Bandung, Indonesia for the research methodology and laboratory facilities. We are thankful to Ni Luh Wisma Eka Yanti, Rismawati Laila Qodariah, Hanna Sari W Kusuma, Satrio Haryo Wibowo, Ubaydillah Zedd Munshy from Aretha Medika Utama Biomolecular and Biomedical Research Center, Bandung, Indonesia for their valuable assistance.
- **Author's contribution:** This work was carried out in collaboration between all authors. W.W., supervised the laboratory work, contributed to the experimental design and the protocol (writing of the manuscript). Y.H., D. R. L., D. K. J. and T. L. W. carried out laboratory work, contributed to the experimental design and the protocol. R. R., F. S. P., A. A., A. A., and Z. K. carried out laboratory work, the experimental design and contributed to the protocol. A. F. and M. S. performed the statistical analysis and contributed to the protocol. All authors read and approved the final manuscript.
- **Financial support and sponsorship:** None.
- **Conflict of interest:** There are no conflict of interest.

REFERENCES

1. Huang J, Wu L, Tashiro S, Onodera, S Ikejima T. The augmentation of TNF α induced cell death in murine L929 fibrosarcoma by pan-caspase inhibitor Z-VAD-fmk through premiochondrial and MAPK-dependent pathways. *Acta Med Okayama*. 2016; 59: 253-260.
2. Wahidin M, Noviani R, Hermawan S, Andriani V, Ardian A, Djarir H. Population-based cancer registration in Indonesia. *Asian Pac J Cancer Prev*. 2012;13(4): 1709-1710.
3. Holliday DL, Speirs V. Choosing the right cell line for breast cancer research. *Breast Cancer Res*. 2011; 13(4): 215(1-7).
4. DeFazio-Eli L, Strommen K, Dao-Pick T, Parry G, Goodman L, Winslow J. Quantitative assays for the measurement of HER1-HER2 heterodimerization and phosphorylation in cell lines and breast tumors: applications for diagnostics and targeted drug mechanism of action 2011. *Breast Cancer Res*. 2011; 13: R44(1-18).
5. Padua MB, Bhat-Nakshatri P, Anjanappa M, Hao Y, Liu Y, McElyea K, Sandusky G, Althouse S, Perkins S, Nakshatri H. Disruption of the estradiol-regulated NTN1-UNC5A dependence receptor signaling axis causes a hybrid basal/luminal molecular phenotype in estrogen receptor-positive breast cancer cells. *Cancer Res*. 2017; doi: 10.1158/1538-7445.SABCS16-P6-08-02.
6. Ruslim SK, Purwoto G, Widyahening IS, Ramli I. Stadium IB – IIA cervical cancer patient's survival rate after receiving definitive radiation and radical operation therapy followed by adjuvant radiation therapy along with analysis of factors affecting the patient's survival rate. *J Physics: Conf. Series* 2017; 884(1): 012121
7. Fulda S. Targeting apoptosis signalling pathway for anticancer therapy. *Frontiers Oncol*. 2011; 1(23): 1-7.
8. Murray J, Donahue D, Head H, Mansell M, Margraf L. Low-Grade glioma combination chemotherapy may be effective in braf V600e codon-mutated optic pathway gangliogliomas.

- Neuro Oncol 2017; 19(Suppl 4): iv34.
9. Subik K, Lee J-F, Baxter L, Strzepek T, Cstell D, Crowley P. The expression of patterns of ER, PR, HER2, CK5/6, EGFR, Ki67, and AR by immunohistochemical analysis in breast cancer cell lines. *Breast Cancer (Auckl)*2010: 35-41.
 10. Jiao X, Cristofanilli M, Rizvanov A, Pestel R. Breast cancer stem cell isolation. *Breast Cancer Methods Protocols*. 2016; 121-135.
 11. Widowati W, Wijaya L, Bachtar I, Gunanegara R, Sugeng S U, Irawan YA, Sutiman BS, Widodo MA. Effect of oxygen tension on proliferation and characteristics of Wharton's jelly-derived mesenchymal stem cells. *Biomarkers Genomic Med*. 2014; 6: 43-48.
 12. Pham N, Morrison A, Schowk J, Aviel-Ronen S, Lakovlev V, Tsao M. Quantitative image analysis of immunohistochemical stains using a CMYK color model. *Diagn Pathol*. 2007; 2(8): 1-10.
 13. American Cancer Society. 2018. www.cancer.org. Accessed: August, 16 2018.
 14. Popolin C, Becceneri AB, Graminha AE, Batista AA, Cominetti MR. Evaluation of ruthenium complex [Ru(AmSal)(dppe)₂] PF6 on the proliferation, morphology, and migration of triple-negative MDA-MB-231 breast tumor cells. *Mol Cancer Res; AACR Special Conference: Advances in Breast Cancer Research*. 2017; Oct 7-10.
 15. Badve S, Dabbs DJ, Schnitt SJ, Baehner FL, Decker T, Eusebi V, Fox SB, Ichihara S, Jacquemier J, Lakhani SR, Palacios J, Rakha EA, Richardson AL, Schmitt FC, Tan PH, Tse GM, Weigelt B, Ellis IO, Reis-Filho JS. Basal-like and triple-negative breast cancers: a critical review with an emphasis on the implications for pathologists and oncologists. *Mod Pathol*. 2011; 24: 157-167.
 16. Liu X, Krawczyk E, Suprynowicz FA, Palechor-Ceron N, Yuan H, Dakic A, Simic V, Zheng YL, Sripadhan P, Chen C, Lu J, Hou TW, Choudhury S, Kallakury B, Tang DG, Darling T, Thangapazham R, Timofeeva O, Dritschilo A, Randell SH, Albanese C, Agarwal S, Schlegel R. Conditional reprogramming and long-term expansion of normal and tumor cells from human biospecimens. *Nat Protoc* 2017; 12(2): 439-451.
 17. Leibniz Institute DSMZ-German Collection of Microorganism and Cell Culture. 2018. Available on <https://www.dsmz.de/catalogues/details/culture/ACC-738.html>. Accessed: September, 11 2018.

LEMBAR HASIL PENILAIAN
SEJAWAT SEBIDANG atau PEER REVIEW

KARYA ILMIAH : JURNAL ILMIAH

Judul Karya Ilmiah (Artikel) : Isolation, Characterization and Proliferation of Cancer Cells from Breast Cancer Patients

Jumlah Penulis : 12 orang

Nama-nama Penulis : **Wahyu Widowati**, Yusuf Heriady, Dian Ratih Laksmiawati, Diana Krisanti Jasaputra, Teresa Liliana Wargasetia, Rizal Rizal, Fajar Sukma Perdana, Annisa Amalia , Annisa Arlisyah, Zakiyatul Khoiriyah, Ahmad Faried, Mawar Subangkit

Status Penulis : Penulis Pertama / ~~Penulis ke~~ / Penulis Korespondensi **)

Identitas Jurnal Ilmiah : a. Nama jurnal : Acta Informatica Medica
 b. Nomor ISSN : 0353-8109
 c. Vol., No., Bulan, Tahun : Vol.26, No.4, Dec 2018
 d. Penerbit : Avicena Publishing
 e. DOI Artikel (jika ada) : 10.5455/aim.2018.26.240-244
 f. Alamat Web Jurnal : https://pubmed.ncbi.nlm.nih.gov/30692706/
 g. Terindeks di : Scopus Q2, SJR 0.267

Kategori Publikasi Jurnal Ilmiah: ~~Jurnal Ilmiah Internasional~~ / Internasional Bereputasi **)
 (beri tanda √ yang dipilih)

Jurnal Ilmiah Nasional Terakreditasi

Jurnal Ilmiah Nasional / Nasional terindeks ***)

HASIL PENILAIAN (Peer Review) :

No	Komponen Yang Dinilai	Nilai Maksimal JURNAL ILMIAH			Nilai Akhir Yang Diperoleh *)
		Internasional / Bereputasi	Nasional Terakreditasi	Nasional ***)	
		<input checked="" type="checkbox"/>	<input type="checkbox"/>	<input type="checkbox"/>	
a.	Kelengkapan unsur isi karya (10%)	4			3,4
b.	Ruang lingkup dan kedalaman pembahasan (30%)	12			11,8
c.	Kecukupan dan kemutakhiran data/informasi dan metodologi (30%)	12			11,9
d.	Kelengkapan unsur dan kualitas penerbitan (30%)	12			11,7
	Total	40			34,8

Catatan Penilaian ARTIKEL oleh Reviewer :

a. Kelengkapan dan kesesuaian unsur.....
 Unsur lengkap, hasil penelitian sesuai judul penelitian, mengikuh' kaidah penelitian.....

b. Ruang lingkup & kedalaman pembahasan.....
 Data sangat memadai meliputi 'Isolasi', 'Karakterisasi' kanker payudara yang diisolasi dari penderita kanker.....

c. Kecukupan & kemutakhiran data serta metodologi.....
 Sumber pustaka mutakhir, menemukan metode isolasi & karakterisasi sel kanker payudara serta mampu berproliferasi dibanding.....

d. Kelengkapan unsur dan kualitas penerbit.....

Jurnal JBMS terindeks scopus Q2 SJR 0,27 Penerbit Avicena

e. Indikasi plagiasi

Jurnal JBMS terindeks scopus Q2 SJR 0,27. Penerbit Avicena tidak terindikasi plagiarisme atau self-plagiarisme. Dengan similarity index sebesar 17%

f. Kesesuaian bidang ilmu

Paper bidang biomedik sangat sesuai dengan bidang ilmu penulis

REVIEWER 1



(Prof. Dr. Chrismis Novalinda Ginting, M.Kes)

NIK : 0115127801

UNIVERSITAS PRIMA INDONESIA

LEMBAR HASIL PENILAIAN
SEJAWAT SEBIDANG atau PEER REVIEW

KARYA ILMIAH : JURNAL ILMIAH

Judul Karya Ilmiah (Artikel) : Isolation, Characterization and Proliferation of Cancer Cells from Breast Cancer Patients

Jumlah Penulis : 12 orang

Nama-nama Penulis : **Wahyu Widowati**, Yusuf Heriady, Dian Ratih Laksmiawati, Diana Krisanti Jasaputra, Teresa Liliana Wargasetia, Rizal Rizal, Fajar Sukma Perdana, Annisa Amalia , Annisa Arlisyah, Zakiyatul Khoiriyah, Ahmad Faried, Mawar Subangkit

Status Penulis : Penulis Pertama / ~~Penulis ke ...~~ / Penulis Korespondensi **)

Identitas Jurnal Ilmiah :

- a. Nama jurnal : Acta Informatica Medica
- b. Nomor ISSN : 0353-8109
- c. Vol., No., Bulan, Tahun : Vol.26, No.4, Dec 2018
- d. Penerbit : Avicena Publishing
- e. DOI Artikel (jika ada) : 10.5455/aim.2018.26.240-244
- f. Alamat Web Jurnal : <https://pubmed.ncbi.nlm.nih.gov/30692706/>
- g. Terindeks di : Scopus Q2, SJR 0.267

Kategori Publikasi Jurnal Ilmiah: ~~Jurnal Ilmiah Internasional~~ / Internasional Bereputasi **)

(beri tanda √ yang dipilih)

Jurnal Ilmiah Nasional Terakreditasi

Jurnal Ilmiah Nasional / Nasional terindeks ***)

HASIL PENILAIAN (Peer Review) :

No	Komponen Yang Dinilai	Nilai Maksimal JURNAL ILMIAH			Nilai Akhir Yang Diperoleh *)
		Internasional / Bereputasi <input checked="" type="checkbox"/>	Nasional Terakreditasi <input type="checkbox"/>	Nasional ***) <input type="checkbox"/>	
a.	Kelengkapan unsur isi karya (10%)	4			3,6
b.	Ruang lingkup dan kedalaman pembahasan (30%)	12			11,7
c.	Kecukupan dan kemitakhiran data/ informasi dan metodologi (30%)	12			11,8
d.	Kelengkapan unsur dan kualitas penerbitan (30%)	12			11,8
Total		40			38,9

Catatan Penilaian ARTIKEL oleh Reviewer :

a. Kelengkapan dan kesesuaian unsur.....
Jurnal ini sudah cukup lengkap dan ada kesesuaian antara unsur dan isinya

b. Ruang lingkup & kedalaman pembahasan.....
Ruang lingkup bahasan sudah memadai dan ada kedalaman dalam pembahasannya

c. Kecukupan & kemitakhiran data serta metodologi.....
Secara umum metodologi masih terbatas dan belum sepenuhnya

d. Kelengkapan unsur dan kualitas penerbit.....

Kualitas penerbit sudah memenuhi reputasi yang baik

e. Indikasi plagiasi

Secara umum belum terlihat adanya unsur plagiasi

f. Kesesuaian bidang ilmu

Jurnal ini sudah sesuai dengan bidang Ilmu yang diteliti

REVIEWER 2



(Prof. Dr. Ermi Girsang, M. Kes)

NIK : 0117057501

UNIVERSITAS PRIMA INDONESIA

LEMBAR HASIL PENILAIAN
SEJAWAT SEBIDANG atau *PEER REVIEW*

KARYA ILMIAH : JURNAL ILMIAH

Judul Karya Ilmiah (Artikel) : Isolation, Characterization and Proliferation of Cancer Cells from Breast Cancer Patients

Jumlah Penulis : 12 orang

Nama-nama Penulis : **Wahyu Widowati**, Yusuf Heriady, Dian Ratih Laksmiawati, Diana Krisanti Jasaputra, Teresa Liliana Wargasetia, Rizal Rizal, Fajar Sukma Perdana, Annisa Amalia , Annisa Arlisyah, Zakiyatul Khoiriyah, Ahmad Faried, Mawar Subangkit

Status Penulis : Penulis Pertama / ~~Penulis ke-....~~ / Penulis Korespondensi **)

Identitas Jurnal Ilmiah : a. Nama jurnal : Acta Informatica Medica
 b. Nomor ISSN : 0353-8109
 c. Vol., No., Bulan, Tahun : Vol.26, No.4, Dec 2018
 d. Penerbit : Avicena Publishing
 e. DOI Artikel (jika ada) : 10.5455/aim.2018.26.240-244
 f. Alamat Web Jurnal : <https://pubmed.ncbi.nlm.nih.gov/30692706/>
 g. Terindeks di : Scopus Q2, SJR 0.267

Kategori Publikasi Jurnal Ilmiah: Jurnal Ilmiah Internasional / Internasional Bereputasi **)
 (beri tanda ✓ yang dipilih) Jurnal Ilmiah Nasional Terakreditasi
 Jurnal Ilmiah Nasional / Nasional terindeks ***)

HASIL PENILAIAN (*Peer Review*) :

No	Komponen Yang Dinilai	Nilai Maksimal JURNAL ILMIAH			Nilai Akhir Yang Diperoleh *)
		Internasional / Bereputasi <input checked="" type="checkbox"/>	Nasional Terakreditasi <input type="checkbox"/>	Nasional ***) <input type="checkbox"/>	
a.	Kelengkapan unsur isi karya (10%)	4			3,45
b.	Ruang lingkup dan kedalaman pembahasan (30%)	12			11,65
c.	Kecukupan dan kemutakhiran data/informasi dan metodologi (30%)	12			11,75
d.	Kelengkapan unsur dan kualitas penerbitan (30%)	12			11,85
	Total	40			38,7

Catatan Penilaian ARTIKEL oleh Reviewer :

- a. Kelengkapan dan kesesuaian unsur.....
 Unsur lengkap, hasil penelitian sesuai judul penelitian, mengikuti kaidah penelitian.
 Jurnal ini sudah cukup lengkap dan ada kesesuaian antara unsur dan isinya
- b. Ruang lingkup & kedalaman pembahasan
 Data sangat memadai meliputi 'Isolasi, Karakterisasi' kanker payudara yang diteliti dari penderita kanker

Kuang lingkup bahasan sudah memadai dan ada kedalaman dalam pembahasannya.

c. Kecukupan & kemutakhiran data serta metodologi.

Sumber pustaka mutakhir, menemukan metode isolasi & karakterisasi sel kanker payudara serta mampu berproliferasi dibanding

Secara umum metodologi masih terbatas dan belum sepenuhnya.

d. Kelengkapan unsur dan kualitas penerbit

Jurnal JBMS terindeks Scopus Q2 SJR 0,27. Penerbit Avicena

Kualitas penerbit sudah memenuhi reputasi yang baik.

e. Indikasi plagiasi

Jurnal JBMS terindeks Scopus Q2 SJR 0,27. Penerbit Avicena tidak terindikasi plagiarisme atau self-plagiarism. Dengan similarity index sebesar 17%.

f. Kesesuaian bidang ilmu

Paper bidang biomedik sangat sesuai dengan bidang ilmu penulis.

Jurnal ini sudah sesuai dengan bidang ilmu yang ditekuni.

Medan,
Reviewer 2

(Prof. Dr. Ermi Girsang, M.Kes)
NIK : 0117057501
UNIVERSITAS PRIMA INDONESIA

Medan,
Reviewer 1

(Prof. Dr. Chrismis Novalinda Ginting, M.Kes)
NIK : 0115127801
UNIVERSITAS PRIMA INDONESIA