

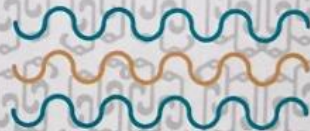
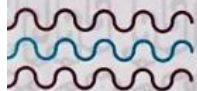
Pameran Seni Rupa

Dosen dan Mahasiswa
Internasional



22.23.24
OKTOBER 2015

Universitas Pendidikan Indonesia
Jl. Dr. Setiabudhi No.229 Bandung

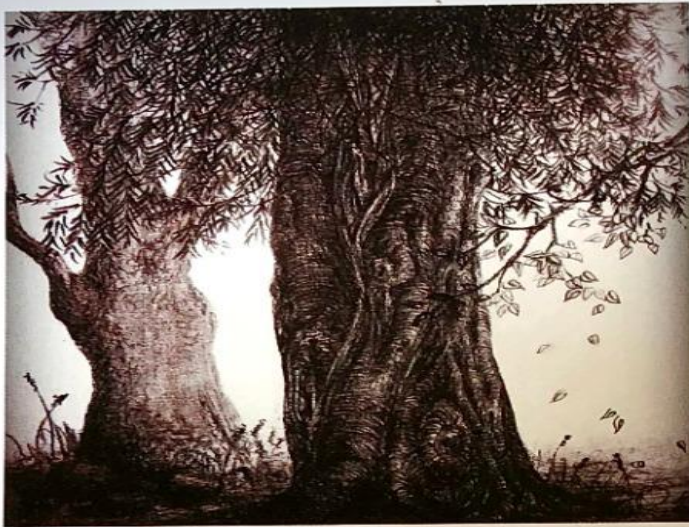


Peri Sunata, "Children to Heaven" 2014

Daftar Isi

2	Sambutan-sambutan
4	Pengantar Kuratorial Pameran Dosen
5	Karya Pameran Dosen
38	Pengantar Kuratorial Pameran Mahasiswa
39	Karya Pameran Mahasiswa
65	Ucapan Terimakasih





Tessa Eka Darmayanti
Universitas Kristen Maranatha
"Struggler"
Charcoal on Paper
A3
2012

STRUGGLE BY A STRUGGLER

There are a relation between emotional distress and spiritual struggle. Struggle can create emotional distress. Actually, definition of struggle by Paloutziar (2013) from the book with title Handbook of the Psychology of Religion and Spirituality, stated that struggle is painful, but also can bring the potential for post traumatic growth – positive side.

This picture represent a struggler – tree, that already passed the 'storm' of life and finally reach the 'light' of life. The Struggler decided to stop looking for the light, she growth and becoming the light for everyone.

Reference:

Paloutziar, Raymond. F. (2013). Handbook of The Psychology of Religion and Spirituality. New York: The Guilford Press, pp. 383 & 385.



Monica Hartanti
Universitas Kristen Maranatha
"Childhood Fantasy"
Water Color on Paper
A3
2015

