

LAMPIRAN

Lampiran 1

Perhitungan Dosis

1. Perhitungan dosis infusa herba purwoceng

- Dosis pada manusia adalah 5 gr (Eka Siswanto Syamsul, 2011).
- Faktor konversi untuk mencit yang beratnya 20 gram adalah 0,0026.
- Mencit yang digunakan pada penelitian beratnya 20 gram.
- Volume lambung mencit 5 ml.
- Perhitungan :

$$5 \text{ gr} = 5 \text{ gr} \times 0,0026 = 1,3 \cdot 10^{-2} \text{ gr} / 20 \text{ gr mencit}$$

Dosis per kgBB mencit

Untuk dosis IHP 2 :

$$(1000 : 20) \times 1,3 \cdot 10^{-2} \text{ gr} = 0,65 \text{ gr/kgBB mencit}$$

Untuk dosis IHP 1 :

$$\text{Dosis IHP 2} : 2 = 0,65 \text{ gr} : 2 = 0,325 \text{ gr/kgBB mencit}$$

Untuk dosis IHP 3 :

$$\text{Dosis IHP 2} \times 2 = 0,65 \text{ gr} \times 2 = 1,3 \text{ gr/kgBB mencit}$$

2. Perhitungan dosis *testosterone undecanoate*

- Dosis *testosterone undecanoate* pada manusia = 160 mg.
- Faktor konversi untuk mencit yang beratnya 20 gram adalah 0,0026.
- Mencit yang digunakan pada penelitian beratnya 20 gram.
- Volume lambung mencit 5 ml.
- Perhitungan :

$$160 \text{ mg} = 160 \text{ mg} \times 0,0026 = 0,416 \text{ mg} / \text{mencit 20 gram}$$

- Dosis per kgBB mencit :

$$0,416 \text{ mg} / 1/2 \text{ cc} \times 1000/20 = 20,8 \text{ mg/kgBB mencit}$$

Lampiran 2

Data Kasar Penelitian

1. Pengamatan hari ketiga

DOSIS 1	15 menit pertama		15 menit kedua		Jumlah		Rerata		
	Mencit	Introducing	Mounting	Introducing	Mounting	Σ Introducing	Σ Mounting	Introducing	Mounting
1		4	2	4	2	8	4	4	2
2		8	4	2	4	10	8	5	4
3		17	2	2	0	19	2	9,5	1
4		7	0	1	0	8	0	4	0
5		7	0	1	0	8	0	4	0
Rerata Total								5,3	1,4

DOSIS 2	15 menit pertama		15 menit kedua		Jumlah		Rerata		
	Mencit	Introducing	Mounting	Introducing	Mounting	Σ Introducing	Σ Mounting	Introducing	Mounting
1		8	0	5	1	13	1	6,5	0,5
2		6	3	2	0	8	3	4	1,5
3		4	0	4	0	8	0	4	0
4		25	2	11	0	36	2	18	1
5		4	0	1	0	5	0	2,5	0
Rerata Total								7	0,6

DOSIS 3	15 menit pertama		15 menit kedua		Jumlah		Rerata		
	Mencit	Introducing	Mounting	Introducing	Mounting	Σ Introducing	Σ Mounting	Introducing	Mounting
1		12	0	5	1	17	1	8,5	0,5
2		8	1	9	4	17	5	8,5	2,5
3		6	0	2	0	8	0	4	0
4		1	0	1	0	2	0	1	0
5		6	0	3	0	9	0	4,5	0
Rerata Total								5,3	0,6

KONTROL	15 menit pertama		15 menit kedua		Jumlah		Rerata		
	Mencit	Introducing	Mounting	Introducing	Mounting	Σ Introducing	Σ Mounting	Introducing	Mounting
1		1	2	0	0	1	2	0,5	1
2		1	0	1	0	2	0	1	0
3		2	2	1	2	3	4	1,5	2
4		2	0	1	0	3	0	1,5	0
5		1	0	0	0	1	0	0,5	0
Rerata Total								1	0,6

PEMBANDING	15 menit pertama		15 menit kedua		Jumlah		Rerata	
	Mencit	Introducing	Mounting	Introducing	Mounting	Σ Introducing	Σ Mounting	Introducing
1	7	0	16	0	23	0	11,5	0
2	14	0	8	0	22	0	11	0
3	4	0	12	0	16	0	8	0
4	13	0	6	0	19	0	9,5	0
5	12	0	8	0	20	0	10	0
Rerata Total							10	0

2. Pengamatan hari kelima

DOSIS 1	15 menit pertama		15 menit kedua		Jumlah		Rerata	
	Mencit	Introducing	Mounting	Introducing	Mounting	Σ Introducing	Σ Mounting	Introducing
1	14	5	9	1	23	6	11,5	3
2	5	2	6	0	11	2	5,5	1
3	9	0	4	0	13	0	6,5	0
4	1	0	2	0	3	0	1,5	0
5	5	0	5	0	10	0	5	0
Rerata Total							6	0,8

DOSIS 2	15 menit pertama		15 menit kedua		Jumlah		Rerata	
	Mencit	Introducing	Mounting	Introducing	Mounting	Σ Introducing	Σ Mounting	Introducing
1	48	0	14	0	62	0	31	0
2	11	2	13	4	24	6	12	3
3	28	1	20	0	48	1	24	0,5
4	9	0	4	0	13	0	6,5	0
5	2	0	0	0	2	0	1	0
Rerata Total							14,9	0,7

DOSIS 3	15 menit pertama		15 menit kedua		Jumlah		Rerata	
	Mencit	Introducing	Mounting	Introducing	Mounting	Σ Introducing	Σ Mounting	Introducing
1	4	0	7	0	11	0	5,5	0
2	26	5	18	2	44	7	22	3,5
3	15	0	22	0	37	0	18,5	0
4	5	0	2	0	7	0	3,5	0
5	11	0	13	0	24	0	12	0
Rerata Total							12,3	0,7

KONTROL	15 menit pertama		15 menit kedua		Jumlah		Rerata	
	Mencit	Introducing	Mounting	Introducing	Mounting	Σ Introducing	Σ Mounting	Introducing
1	1	0	1	0	2	0	1	0
2	2	0	1	0	3	0	1,5	0
3	1	0	0	0	1	0	0,5	0
4	0	0	2	0	2	0	1	0
5	1	0	1	0	2	0	1	0
Rerata Total							1	0

PEMBANDING	15 menit pertama		15 menit kedua		Jumlah		Rerata	
	Mencit	Introducing	Mounting	Introducing	Mounting	Σ Introducing	Σ Mounting	Introducing
1	14	0	9	0	23	0	11,5	0
2	13	0	16	0	29	0	14,5	0
3	12	0	16	0	28	0	14	0
4	15	0	15	0	30	0	15	0
5	17	0	14	0	31	0	15,5	0
Rerata Total							14,1	0

3. Pengamatan hari ketujuh

DOSIS 1	15 menit pertama		15 menit kedua		Jumlah		Rerata	
	Mencit	Introducing	Mounting	Introducing	Mounting	Σ Introducing	Σ Mounting	Introducing
1	19	2	26	3	45	5	22,5	2,5
2	19	4	7	1	26	5	13	2,5
3	9	0	9	0	18	0	9	0
4	4	0	0	0	4	0	2	0
5	4	0	17	0	21	0	10,5	0
Rerata Total							11,4	1

DOSIS 2	15 menit pertama		15 menit kedua		Jumlah		Rerata	
	Mencit	Introducing	Mounting	Introducing	Mounting	Σ Introducing	Σ Mounting	Introducing
1	18	3	11	0	29	3	14,5	1,5
2	8	2	14	2	22	4	11	2
3	4	0	3	0	7	0	3,5	0
4	10	1	8	0	18	1	9	0,5
5	10	1	5	0	15	1	7,5	0,5
Rerata Total							9,1	0,9

DOSIS 3	15 menit pertama		15 menit kedua		Jumlah		Rerata	
	Mencit	Introducing	Mounting	Introducing	Mounting	Σ Introducing	Σ Mounting	Introducing
1	6	10	10	3	16	13	8	6,5
2	3	4	7	1	10	5	5	2,5
3	9	0	8	0	17	0	8,5	0
4	0	0	0	0	0	0	0	0
5	5	0	5	1	10	1	5	0,5
Rerata Total							5,3	1,9

KONTROL	15 menit pertama		15 menit kedua		Jumlah		Rerata	
	Mencit	Introducing	Mounting	Introducing	Mounting	Σ Introducing	Σ Mounting	Introducing
1	2	0	0	0	2	0	1	0
2	1	0	1	0	2	0	1	0
3	2	0	2	0	4	0	2	0
4	2	0	1	0	3	0	1,5	0
5	0	0	1	0	1	0	0,5	0
Rerata Total							1,2	0

PEMBANDING	15 menit pertama		15 menit kedua		Jumlah		Rerata	
	Mencit	Introducing	Mounting	Introducing	Mounting	Σ Introducing	Σ Mounting	Introducing
1	13	0	16	0	29	0	14,5	0
2	9	0	13	0	22	0	11	0
3	17	0	15	0	32	0	16	0
4	16	0	6	0	22	0	11	0
5	9	0	8	0	17	0	8,5	0
Rerata Total							12,2	0

Lampiran 3

Analisis Data

1. Analisis statistik pengamatan hari ketiga

- *Introducing*

Descriptives

Ln_introducing_3								
	N	Mean	Std. Deviation	Std. Error	95% Confidence Interval for Mean		Minimum	Maximum
					Lower Bound	Upper Bound		
IHP_1	5	1,79	,32	,14	1,40	2,19	1,61	2,35
IHP_2	5	1,89	,65	,29	1,08	2,69	1,25	2,94
IHP_3	5	1,70	,64	,29	,91	2,49	,69	2,25
kontrol	5	,67	,26	,11	,35	,98	,41	,92
pemandang	5	2,39	,13	,06	2,23	2,55	2,20	2,53
Total	25	1,69	,71	,14	1,40	1,98	,41	2,94

Test of Homogeneity of Variances

Ln_introducing_3			
Levene Statistic	df1	df2	Sig.
1,830	4	20	,163

ANOVA

Ln_introducing_3					
	Sum of Squares	df	Mean Square	F	Sig.
Between Groups	7,937	4	1,984	9,771	,000
Within Groups	4,061	20	,203		
Total	11,998	24			

*Post Hoc Test***Multiple Comparisons**

Dependent Variable: Ln_introducing_3

Tukey HSD

(I) IHP_1, IHP_2, IHP_3, kontrol, pembanding	(J) IHP_1, IHP_2, IHP_3, kontrol, pembanding	Mean Difference (I-J)	Std. Error	Sig.	95% Confidence Interval	
					Lower Bound	Upper Bound
	IHP_2	-,09	,29	,997	-,94	,76
IHP_1	IHP_3	,09	,29	,997	-,76	,95
	kontrol	1,13 [*]	,29	,006	,27	1,98
	pembanding	-,60	,29	,261	-1,45	,26
	IHP_1	,09	,29	,997	-,76	,94
IHP_2	IHP_3	,18	,29	,965	-,67	1,04
	kontrol	1,22 [*]	,29	,003	,37	2,07
	pembanding	-,51	,29	,416	-1,36	,35
	IHP_1	-,09	,29	,997	-,95	,76
IHP_3	IHP_2	-,18	,29	,965	-1,04	,67
	kontrol	1,03 [*]	,29	,013	,18	1,89
	pembanding	-,69	,29	,151	-1,54	,16
	IHP_1	-1,13 [*]	,29	,006	-1,98	-,27
kontrol	IHP_2	-1,22 [*]	,29	,003	-2,07	-,37
	IHP_3	-1,03 [*]	,29	,013	-1,89	-,18
	pembanding	-1,72 [*]	,29	,000	-2,58	-,87
	IHP_1	,60	,29	,261	-,26	1,45
pembanding	IHP_2	,51	,29	,416	-,35	1,36
	IHP_3	,69	,29	,151	-,16	1,54
	kontrol	1,72 [*]	,29	,000	,87	2,58

*. The mean difference is significant at the 0.05 level.

Homogeneous Subsets

Ln_introducing_3

Tukey HSD

IHP_1, IHP_2, IHP_3, kontrol, pembanding	N	Subset for alpha = 0.05	
		1	2
kontrol	5	,6673	
IHP_3	5		1,7020
IHP_1	5		1,7943
IHP_2	5		1,8862
pembanding	5		2,3914
Sig.		1,000	,151

Means for groups in homogeneous subsets are displayed.

a. Uses Harmonic Mean Sample Size = 5,000.

- **Mounting**

Descriptives

Ln_mounting_3

	N	Mean	Std. Deviation	Std. Error	95% Confidence Interval for Mean		Minimum	Maximum
					Lower Bound	Upper Bound		
					IHP_1	5		
IHP_2	5	,40	,41	,18	-,11	,91	,00	,92
IHP_3	5	,33	,54	,24	-,34	1,01	,00	1,25
kontrol	5	,36	,51	,23	-,28	,99	,00	1,10
pembanding	5	,00	,00	,00	,00	,00	,00	,00
Total	25	,35	,50	,10	,15	,56	,00	1,61

Test of Homogeneity of Variances

Ln_mounting_3

Levene Statistic	df1	df2	Sig.
3,679	4	20	,021

ANOVA

Ln_mounting_3					
	Sum of Squares	df	Mean Square	F	Sig.
Between Groups	1,173	4	,293	1,206	,339
Within Groups	4,866	20	,243		
Total	6,039	24			

Post Hoc Test

Multiple Comparisons

Dependent Variable: Ln_mounting_3

Tukey HSD

(I) IHP_1, IHP_2, IHP_3, kontrol, pembanding	(J) IHP_1, IHP_2, IHP_3, kontrol, pembanding	Mean Difference (I-J)	Std. Error	Sig.	95% Confidence Interval	
					Lower Bound	Upper Bound
IHP_1	IHP_2	,28	,31	,898	-,66	1,21
	IHP_3	,35	,31	,796	-,58	1,28
	kontrol	,32	,31	,838	-,61	1,26
IHP_2	pembanding	,68	,31	,227	-,25	1,61
	IHP_1	-,28	,31	,898	-1,21	,66
	IHP_3	,07	,31	,999	-,86	1,00
IHP_3	kontrol	,04	,31	1,000	-,89	,98
	pembanding	,40	,31	,699	-,53	1,34
	IHP_1	-,35	,31	,796	-1,28	,58
kontrol	IHP_2	-,07	,31	,999	-1,00	,86
	kontrol	-,03	,31	1,000	-,96	,91
	pembanding	,33	,31	,823	-,60	1,27
pembanding	IHP_1	-,32	,31	,838	-1,26	,61
	IHP_2	-,04	,31	1,000	-,98	,89
	IHP_3	,03	,31	1,000	-,91	,96
pembanding	pembanding	,36	,31	,779	-,58	1,29
	IHP_1	-,68	,31	,227	-1,61	,25
	IHP_2	-,40	,31	,699	-1,34	,53
pembanding	IHP_3	-,33	,31	,823	-1,27	,60
	kontrol	-,36	,31	,779	-1,29	,58

Homogeneous Subsets

Ln_mounting_3

Tukey HSD

IHP_1, IHP_2, IHP_3, kontrol, pembanding	N	Subset for alpha = 0.05
		1
pembanding	5	,0000
IHP_3	5	,3316
kontrol	5	,3584
IHP_2	5	,4030
IHP_1	5	,6802
Sig.		,227

Means for groups in homogeneous subsets are displayed.

a. Uses Harmonic Mean Sample Size = 5,000.

2. Analisis statistik pengamatan hari kelima

- *Introducing*

Descriptives

Ln_introducing_5

	N	Mean	Std. Deviation	Std. Error	95% Confidence Interval for Mean		Minimum	Maximum
					Lower Bound	Upper Bound		
					IHP_1	5		
IHP_2	5	2,39	1,11	,49	1,02	3,77	,69	3,47
IHP_3	5	2,41	,70	,31	1,54	3,28	1,50	3,14
kontrol	5	,68	,18	,08	,45	,91	,41	,92
pembanding	5	2,71	,11	,05	2,57	2,85	2,53	2,80
Total	25	2,00	,94	,19	1,61	2,39	,41	3,47

Test of Homogeneity of Variances

Ln_introducing_5

Levene Statistic	df1	df2	Sig.
4,067	4	20	,014

ANOVA

Ln_introducing_5					
	Sum of Squares	df	Mean Square	F	Sig.
Between Groups	12,989	4	3,247	7,727	,001
Within Groups	8,405	20	,420		
Total	21,394	24			

Post Hoc Test

Multiple Comparisons

Dependent Variable: Ln_introducing_5

Tukey HSD

(I) IHP_1, IHP_2, IHP_3, kontrol, pembeding	(J) IHP_1, IHP_2, IHP_3, kontrol, pembeding	Mean Difference (I-J)	Std. Error	Sig.	95% Confidence Interval	
					Lower Bound	Upper Bound
IHP_1	IHP_2	-,57	,41	,644	-1,79	,66
	IHP_3	-,59	,41	,618	-1,81	,64
	kontrol	1,14	,41	,075	-,08	2,37
IHP_2	pembeding	-,89	,41	,234	-2,11	,34
	IHP_1	,57	,41	,644	-,66	1,79
	IHP_3	-,02	,41	1,000	-1,24	1,21
IHP_3	kontrol	1,71 [*]	,41	,004	,48	2,94
	pembeding	-,32	,41	,934	-1,55	,91
	IHP_1	,59	,41	,618	-,64	1,81
kontrol	IHP_2	,02	,41	1,000	-1,21	1,24
	kontrol	1,73 [*]	,41	,003	,50	2,96
	pembeding	-,30	,41	,946	-1,53	,93
pembeding	IHP_1	-1,14	,41	,075	-2,37	,08
	IHP_2	-1,71 [*]	,41	,004	-2,94	-,48
	IHP_3	-1,73 [*]	,41	,003	-2,96	-,50
pembeding	pembeding	-2,03 [*]	,41	,001	-3,26	-,80
	IHP_1	,89	,41	,234	-,34	2,11
	IHP_2	,32	,41	,934	-,91	1,55
pembeding	IHP_3	,30	,41	,946	-,93	1,53
	kontrol	2,03 [*]	,41	,001	,80	3,26

*. The mean difference is significant at the 0.05 level.

Homogeneous Subsets

Ln_introducing_5

Tukey HSD

IHP_1, IHP_2, IHP_3, kontrol, pembanding	N	Subset for alpha = 0.05	
		1	2
kontrol	5	,6802	
IHP_1	5	1,8241	1,8241
IHP_2	5		2,3915
IHP_3	5		2,4093
pembanding	5		2,7101
Sig.		,075	,234

Means for groups in homogeneous subsets are displayed.

a. Uses Harmonic Mean Sample Size = 5,000.

- **Mounting**

Descriptives

Ln_mounting_5

	N	Mean	Std. Deviation	Std. Error	95% Confidence Interval for Mean		Minimum	Maximum
					Lower Bound	Upper Bound		
					IHP_1	5		
IHP_2	5	,36	,60	,27	-,39	1,10	,00	1,39
IHP_3	5	,30	,67	,30	-,53	1,14	,00	1,50
kontrol	5	,00	,00	,00	,00	,00	,00	,00
pembanding	5	,00	,00	,00	,00	,00	,00	,00
Total	25	,22	,48	,10	,02	,41	,00	1,50

Test of Homogeneity of Variances

Ln_mounting_5

Levene Statistic	df1	df2	Sig.
4,576	4	20	,009

ANOVA

Ln_mounting_5					
	Sum of Squares	df	Mean Square	F	Sig.
Between Groups	,804	4	,201	,839	,517
Within Groups	4,791	20	,240		
Total	5,595	24			

Post Hoc Test

Multiple Comparisons

Dependent Variable: Ln_mounting_5

Tukey HSD

(I) IHP_1, IHP_2, IHP_3, kontrol, pembanding	(J) IHP_1, IHP_2, IHP_3, kontrol, pembanding	Mean Difference (I-J)	Std. Error	Sig.	95% Confidence Interval	
					Lower Bound	Upper Bound
IHP_1	IHP_2	,06	,31	1,000	-,87	,98
	IHP_3	,12	,31	,996	-,81	1,04
	kontrol	,42	,31	,669	-,51	1,34
	pembanding	,42	,31	,669	-,51	1,34
IHP_2	IHP_1	-,06	,31	1,000	-,98	,87
	IHP_3	,06	,31	1,000	-,87	,98
	kontrol	,36	,31	,774	-,57	1,28
	pembanding	,36	,31	,774	-,57	1,28
IHP_3	IHP_1	-,12	,31	,996	-1,04	,81
	IHP_2	-,06	,31	1,000	-,98	,87
	kontrol	,30	,31	,865	-,63	1,23
	pembanding	,30	,31	,865	-,63	1,23
kontrol	IHP_1	-,42	,31	,669	-1,34	,51
	IHP_2	-,36	,31	,774	-1,28	,57
	IHP_3	-,30	,31	,865	-1,23	,63
	pembanding	,00	,31	1,000	-,93	,93
pembanding	IHP_1	-,42	,31	,669	-1,34	,51
	IHP_2	-,36	,31	,774	-1,28	,57
	IHP_3	-,30	,31	,865	-1,23	,63
	kontrol	,00	,31	1,000	-,93	,93

Homogeneous Subsets

Ln_mounting_5

Tukey HSD

IHP_1, IHP_2, IHP_3, kontrol, pembanding	N	Subset for alpha = 0.05
		1
kontrol	5	,0000
pembanding	5	,0000
IHP_3	5	,3008
IHP_2	5	,3584
IHP_1	5	,4159
Sig.		,669

Means for groups in homogeneous subsets are displayed.

a. Uses Harmonic Mean Sample Size = 5,000.

3. Analisis statistik pengamatan hari ketujuh

- *Introducing*

Descriptives

Ln_introducing_7

	N	Mean	Std. Deviation	Std. Error	95% Confidence Interval for Mean		Minimum	Maximum
					Lower Bound	Upper Bound		
					IHP_1	5		
IHP_2	5	2,23	,47	,21	1,66	2,81	1,50	2,74
IHP_3	5	1,61	,92	,41	,46	2,75	,00	2,25
kontrol	5	,76	,26	,12	,44	1,09	,41	1,10
pembanding	5	2,56	,23	,10	2,27	2,85	2,25	2,83
Total	25	1,90	,86	,17	1,54	2,25	,00	3,16

Test of Homogeneity of Variances

Ln_introducing_7

Levene Statistic	df1	df2	Sig.
1,390	4	20	,273

ANOVA

Ln_introducing_7					
	Sum of Squares	df	Mean Square	F	Sig.
Between Groups	10,560	4	2,640	7,461	,001
Within Groups	7,077	20	,354		
Total	17,637	24			

Post Hoc Test

Multiple Comparisons

Dependent Variable: Ln_introducing_7

Tukey HSD

(I) IHP_1, IHP_2, IHP_3, kontrol, pembanding	(J) IHP_1, IHP_2, IHP_3, kontrol, pembanding	Mean Difference (I-J)	Std. Error	Sig.	95% Confidence Interval	
					Lower Bound	Upper Bound
IHP_1	IHP_2	,09	,38	,999	-1,03	1,22
	IHP_3	,72	,38	,340	-,40	1,85
	kontrol	1,57 [*]	,38	,004	,44	2,69
	pembanding	-,23	,38	,971	-1,36	,89
IHP_2	IHP_1	-,09	,38	,999	-1,22	1,03
	IHP_3	,63	,38	,474	-,50	1,75
	kontrol	1,47 [*]	,38	,007	,35	2,60
IHP_3	pembanding	-,32	,38	,907	-1,45	,80
	IHP_1	-,72	,38	,340	-1,85	,40
	IHP_2	-,63	,38	,474	-1,75	,50
	kontrol	,85	,38	,204	-,28	1,97
kontrol	pembanding	-,95	,38	,123	-2,08	,17
	IHP_1	-1,57 [*]	,38	,004	-2,69	-,44
	IHP_2	-1,47 [*]	,38	,007	-2,60	-,35
	IHP_3	-,85	,38	,204	-1,97	,28
pembanding	pembanding	-1,80 [*]	,38	,001	-2,92	-,67
	IHP_1	,23	,38	,971	-,89	1,36
	IHP_2	,32	,38	,907	-,80	1,45
	IHP_3	,95	,38	,123	-,17	2,08
	kontrol	1,80 [*]	,38	,001	,67	2,92

*. The mean difference is significant at the 0.05 level.

Homogeneous Subsets

Ln_introducing_7

Tukey HSD

IHP_1, IHP_2, IHP_3, kontrol, pembanding	N	Subset for alpha = 0.05	
		1	2
kontrol	5	,7613	
IHP_3	5	1,6064	1,6064
IHP_2	5		2,2345
IHP_1	5		2,3279
pembanding	5		2,5590
Sig.		,204	,123

Means for groups in homogeneous subsets are displayed.

a. Uses Harmonic Mean Sample Size = 5,000.

- **Mounting**

Descriptives

Ln_mounting_7

	N	Mean	Std. Deviation	Std. Error	95% Confidence Interval for Mean		Minimum	Maximum
					Lower Bound	Upper Bound		
					IHP_1	5		
IHP_2	5	,57	,44	,20	,02	1,11	,00	1,10
IHP_3	5	,73	,88	,39	-,36	1,83	,00	2,01
kontrol	5	,00	,00	,00	,00	,00	,00	,00
pembanding	5	,00	,00	,00	,00	,00	,00	,00
Total	25	,36	,58	,12	,12	,60	,00	2,01

Test of Homogeneity of Variances

Ln_mounting_7

Levene Statistic	df1	df2	Sig.
15,074	4	20	,000

ANOVA

Ln_mounting_7					
	Sum of Squares	df	Mean Square	F	Sig.
Between Groups	2,308	4	,577	2,004	,133
Within Groups	5,757	20	,288		
Total	8,065	24			

Post Hoc Test

Multiple Comparisons

Dependent Variable: Ln_mounting_7

Tukey HSD

(I) IHP_1, IHP_2, IHP_3, kontrol, pembeding	(J) IHP_1, IHP_2, IHP_3, kontrol, pembeding	Mean Difference (I-J)	Std. Error	Sig.	95% Confidence Interval	
					Lower Bound	Upper Bound
IHP_1	IHP_2	-,06	,34	1,000	-1,08	,95
	IHP_3	-,23	,34	,957	-1,25	,78
	kontrol	,50	,34	,588	-,51	1,52
IHP_2	pembeding	,50	,34	,588	-,51	1,52
	IHP_1	,06	,34	1,000	-,95	1,08
	IHP_3	-,17	,34	,986	-1,18	,85
IHP_3	kontrol	,57	,34	,476	-,45	1,58
	pembeding	,57	,34	,476	-,45	1,58
	IHP_1	,23	,34	,957	-,78	1,25
kontrol	IHP_2	,17	,34	,986	-,85	1,18
	kontrol	,73	,34	,233	-,28	1,75
	pembeding	,73	,34	,233	-,28	1,75
pembeding	IHP_1	-,50	,34	,588	-1,52	,51
	IHP_2	-,57	,34	,476	-1,58	,45
	IHP_3	-,73	,34	,233	-1,75	,28
	pembeding	,00	,34	1,000	-1,02	1,02
	IHP_1	-,50	,34	,588	-1,52	,51
	IHP_2	-,57	,34	,476	-1,58	,45
	IHP_3	-,73	,34	,233	-1,75	,28
	kontrol	,00	,34	1,000	-1,02	1,02

Homogeneous Subsets

Ln_mounting_7

Tukey HSD

IHP_1, IHP_2, IHP_3, kontrol, pembanding	N	Subset for alpha = 0.05
		1
kontrol	5	,0000
pembanding	5	,0000
IHP_1	5	,5011
IHP_2	5	,5652
IHP_3	5	,7346
Sig.		,233

Means for groups in homogeneous subsets are displayed.

a. Uses Harmonic Mean Sample Size = 5,000.

4. Analisis statistik pengamatan hari ketiga, kelima, dan ketujuh

- *Introducing*

Descriptives

Ln_total_introducing

	N	Mean	Std. Deviation	Std. Error	95% Confidence Interval for Mean		Minimum	Maximum
					Lower Bound	Upper Bound		
					IHP_1	5		
IHP_2	5	2,34	,50	,22	1,72	2,96	1,55	2,91
IHP_3	5	2,02	,65	,29	1,22	2,83	,92	2,55
kontrol	5	,71	,14	,06	,54	,89	,53	,83
pembanding	5	2,57	,04	,02	2,52	2,63	2,51	2,62
Total	25	1,94	,77	,15	1,62	2,26	,53	2,91

Test of Homogeneity of Variances

Ln_total_introducing

Levene Statistic	df1	df2	Sig.
1,812	4	20	,166

ANOVA

Ln_total_introducing					
	Sum of Squares	df	Mean Square	F	Sig.
Between Groups	10,409	4	2,602	13,830	,000
Within Groups	3,763	20	,188		
Total	14,172	24			

Post Hoc Test

Multiple Comparisons

Dependent Variable: Ln_total_introducing

Tukey HSD

(I) IHP_1, IHP_2, IHP_3, kontrol, pembanding	(J) IHP_1, IHP_2, IHP_3, kontrol, pembanding	Mean Difference (I-J)	Std. Error	Sig.	95% Confidence Interval	
					Lower Bound	Upper Bound
IHP_1	IHP_2	-,28	,27	,839	-1,10	,54
	IHP_3	,04	,27	1,000	-,79	,86
	kontrol	1,34 [*]	,27	,001	,52	2,16
	pembanding	-,51	,27	,363	-1,33	,31
IHP_2	IHP_1	,28	,27	,839	-,54	1,10
	IHP_3	,32	,27	,774	-,50	1,14
	kontrol	1,63 [*]	,27	,000	,80	2,45
	pembanding	-,23	,27	,913	-1,05	,59
IHP_3	IHP_1	-,04	,27	1,000	-,86	,79
	IHP_2	-,32	,27	,774	-1,14	,50
	kontrol	1,31 [*]	,27	,001	,49	2,13
	pembanding	-,55	,27	,300	-1,37	,27
kontrol	IHP_1	-1,34 [*]	,27	,001	-2,16	-,52
	IHP_2	-1,63 [*]	,27	,000	-2,45	-,80
	IHP_3	-1,31 [*]	,27	,001	-2,13	-,49
	pembanding	-1,86 [*]	,27	,000	-2,68	-1,04
pembanding	IHP_1	,51	,27	,363	-,31	1,33
	IHP_2	,23	,27	,913	-,59	1,05
	IHP_3	,55	,27	,300	-,27	1,37
	kontrol	1,86 [*]	,27	,000	1,04	2,68

*. The mean difference is significant at the 0.05 level.

Homogeneous Subsets

Ln_total_introducing

Tukey HSD

IHP_1, IHP_2, IHP_3, kontrol, pembanding	N	Subset for alpha = 0.05	
		1	2
kontrol	5	,7145	
IHP_3	5		2,0222
IHP_1	5		2,0580
IHP_2	5		2,3402
pembanding	5		2,5719
Sig.		1,000	,300

Means for groups in homogeneous subsets are displayed.

a. Uses Harmonic Mean Sample Size = 5,000.

- **Mounting**

Descriptives

Ln_total_mounting	N	Mean	Std. Deviation	Std. Error	95% Confidence Interval for Mean		Minimum	Maximum
					Lower Bound	Upper Bound		
					IHP_1	5		
IHP_2	5	,49	,40	,18	-,01	,99	,18	1,16
IHP_3	5	,54	,67	,30	-,28	1,37	,00	1,34
kontrol	5	,16	,24	,11	-,14	,45	,00	,53
pembanding	5	,00	,00	,00	,00	,00	,00	,00
Total	25	,35	,48	,10	,15	,55	,00	1,34

Test of Homogeneity of Variances

Ln_total_mounting	Levene Statistic	df1	df2	Sig.
	12,064	4	20	,000

ANOVA

Ln_total_mounting					
	Sum of Squares	df	Mean Square	F	Sig.
Between Groups	1,290	4	,322	1,492	,242
Within Groups	4,322	20	,216		
Total	5,612	24			

Post Hoc Test

Multiple Comparisons

Dependent Variable: Ln_total_mounting

Tukey HSD

(I) IHP_1, IHP_2, IHP_3, kontrol, pembanding	(J) IHP_1, IHP_2, IHP_3, kontrol, pembanding	Mean Difference (I-J)	Std. Error	Sig.	95% Confidence Interval	
					Lower Bound	Upper Bound
IHP_1	IHP_2	,06	,29	1,000	-,82	,94
	IHP_3	,01	,29	1,000	-,87	,89
	kontrol	,39	,29	,669	-,48	1,27
IHP_2	pembanding	,55	,29	,358	-,33	1,43
	IHP_1	-,06	,29	1,000	-,94	,82
	IHP_3	-,05	,29	1,000	-,93	,83
IHP_3	kontrol	,33	,29	,786	-,55	1,21
	pembanding	,49	,29	,470	-,39	1,37
	IHP_1	-,01	,29	1,000	-,89	,87
kontrol	IHP_2	,05	,29	1,000	-,83	,93
	kontrol	,38	,29	,691	-,50	1,26
	pembanding	,54	,29	,377	-,34	1,42
pembanding	IHP_1	-,39	,29	,669	-1,27	,48
	IHP_2	-,33	,29	,786	-1,21	,55
	IHP_3	-,38	,29	,691	-1,26	,50
kontrol	pembanding	,16	,29	,982	-,72	1,04
	IHP_1	-,55	,29	,358	-1,43	,33
	IHP_2	-,49	,29	,470	-1,37	,39
pembanding	IHP_3	-,54	,29	,377	-1,42	,34
	kontrol	-,16	,29	,982	-1,04	,72

Homogeneous Subsets

Ln_total_mounting		
Tukey HSD		
IHP_1, IHP_2, IHP_3, kontrol, pembanding	N	Subset for alpha = 0.05
		1
pembanding	5	,0000
kontrol	5	,1586
IHP_2	5	,4928
IHP_3	5	,5422
IHP_1	5	,5536
Sig.		,358

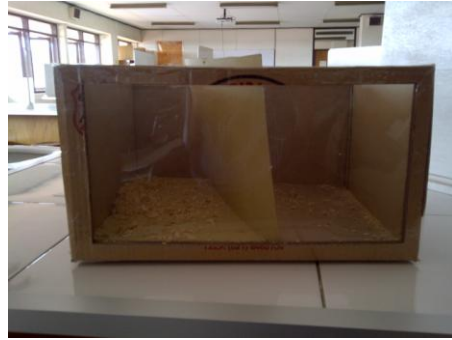
Means for groups in homogeneous subsets are displayed.

a. Uses Harmonic Mean Sample Size = 5,000.

Lampiran 4
Foto Penelitian



Herba Purwoceng Kering



Kandang Pengamatan



Kandang Pemeliharaan



Introducing



Mounting

Lampiran 5

Komisi Etik Penelitian



Email: ethic_fkukmrsl@med.maranatha.edu

SURAT KEPUTUSAN

NO: 32/KEP FK UKM-RSI/IV/2012

- Menimbang:
- a) Bahwa dalam upaya melindungi hak asasi dan kesejahteraan subjek penelitian kesehatan harus mendapat penilaian dan rekomendasi etik penelitian kesehatan dari Komite Etik Penelitian Kesehatan
 - b) bahwa sehubungan dengan butir (a) tersebut diatas telah diajukan permohonan penilaian dan rekomendasi etik penelitian kesehatan berjudul:

Pengaruh Infusa Purwaceng Terhadap Perilaku Seksual
Mencit Swiss Webster Jantan
 oleh Vincentius Handy Suria
 selaku penanggung jawab penelitian
 - c) bahwa terhadap permohonan tersebut pada butir (b) telah dilakukan pengkajian yang mendalam oleh Komite Etik Penelitian Kesehatan
 - d) bahwa sehubungan dengan butir (a), (b) dan (c) perlu dikeluarkan surat keputusan hasil penilaian dan rekomendasi kelayakan etik penelitian (*ethical approval*)
- Mengingat: Surat Keputusan Dekan Fakultas Kedokteran Universitas Kristen Maranatha No. 317/III/S.Kep./FK-UKM/2011, tentang PEMBENTUKAN DAN PENGANGKATAN PENGURUS KOMISI ETIK PENELITIAN FAKULTAS KEDOKTERAN UNIVERSITAS KRISTEN MARANATHA – RUMAH SAKIT IMMANUEL (KEP FK UKM-RSI).

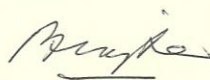
MEMUTUSKAN

- Menetapkan
- Pertama Menyetujui dan mengizinkan pelaksanaan penelitian berjudul:

Pengaruh Infusa Purwaceng Terhadap Perilaku Seksual
Mencit Swiss Webster Jantan
 dengan penanggung jawab:
Vincentius Handy Suria
 - Kedua Surat keputusan ini berlaku sejak ditetapkan dengan ketentuan akan ditinjau kembali apabila di kemudian hari ternyata terdapat kekeliruan

Ditetapkan di : Bandung
 Pada tanggal : 02 April 2012

Ketua



Prof. DR H.R Mughtan Sujatno, dr, SpFK(K)

Sekretaris



Dr. Diana Krisanti Jasaputra, dr, M Kes