

Lampiran 1.

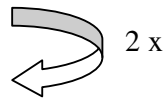
Dosis Buah Merah

Dosis manusia 70 kg = 2 x 15 ml (1sdm) = 30 ml

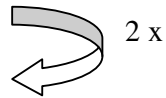
Dosis untuk mencit 20 g = 30 ml x 0,0026 = 0,078 ml

Dosis untuk mencit 25 g = $\frac{25}{20} \times 0,078 \text{ ml} = 0,0975 \text{ ml} \approx 0,1 \text{ ml}$

Dosis 1 = 0,05 ml



Dosis 2 = 0,1 ml



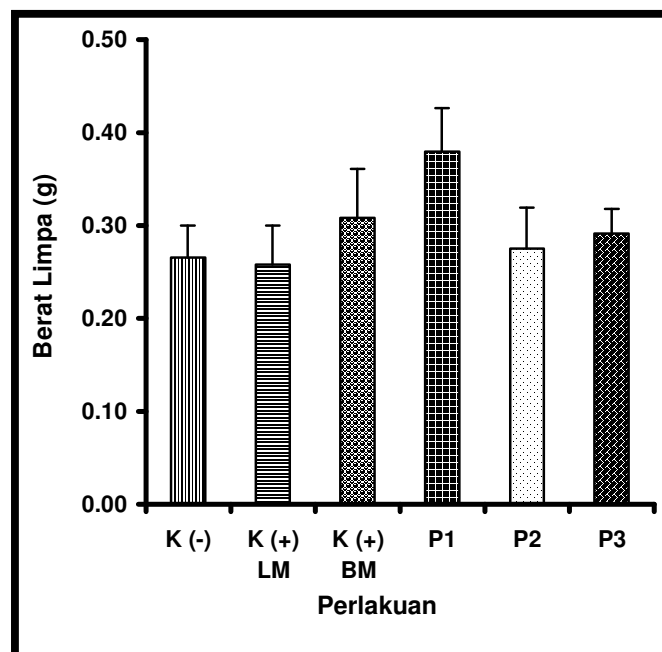
Dosis 3 = 0,2 ml

Lampiran 2.

Berat Limpa Mencit

Tabel Rata-rata Berat Limpa Mencit (g)

Mencit	Perlakuan					
	K (-)	K (+) LM	K (+) BM	P1	P2	P3
1	0,2400	0,2970	0,3739	0,3120	0,3190	0,2560
2	0,2962	0,2390	0,3259	0,4350	0,2170	0,3180
3	0,2760	0,3040	0,2499	0,3680	0,3000	0,2860
4	0,2190	0,2030	0,3339	0,3700	0,2390	0,2810
5	0,2962	0,2460	0,2559	0,4120	0,3000	0,3170
MEAN ±	0,2655±	0,2578±	0,3079±	0,3794±	0,2750±	0,2916±
SD	0,0347	0,0423	0,0534	0,0472	0,0443	0,0262

Grafik Rata-rata Berat Limpa Mencit (g)

Lampiran 3.

Perhitungan Statistik dengan SPSS 13.0

Jumlah Limfosit pada Limpa Mencit

Oneway

Descriptives

hasilJumlah	N	Mean	Std. Deviation	Std. Error	% Confidence Interval		Minimum	Maximum
					Mean	Mean		
Kontrol Neg	5	142.20	17.768	7.946	120.14	164.26	124	166
Kontrol List	5	190.40	32.647	14.600	149.86	230.94	149	240
Kontrol BM	5	295.00	64.950	29.047	214.35	375.65	218	353
P1	5	394.80	112.271	50.209	255.40	534.20	270	518
P2	5	469.00	98.115	43.878	347.17	590.83	386	583
P3	5	519.80	153.991	68.867	328.60	711.00	340	716
Total	30	335.20	164.316	30.000	273.84	396.56	124	716

ANOVA

hasilJumlah	Sum of Squares	df	Mean Square	F	Sig.
Between Groups	576819.2	5	115363.840	13.429	.000
Within Groups	206177.6	24	8590.733		
Total	782996.8	29			

Post Hoc Tests

Multiple Comparisons

Dependent Variable: hasilJumlah

Tukey HSD

(I) perlakuanJumlah	(J) perlakuanJumlah	Mean Difference (I-J)	Std. Error	Sig.	95% Confidence Interval	
					Lower Bound	Upper Bound
KontrolNeg	KontrolList	-48.200	58.620	.960	-229.45	133.05
	KontrolBM	-152.800	58.620	.134	-334.05	28.45
	P1	-252.600*	58.620	.003	-433.85	-71.35
	P2	-326.800*	58.620	.000	-508.05	-145.55
	P3	-377.600*	58.620	.000	-558.85	-196.35
KontrolList	KontrolNeg	48.200	58.620	.960	-133.05	229.45
	KontrolBM	-104.600	58.620	.494	-285.85	76.65
	P1	-204.400*	58.620	.021	-385.65	-23.15
	P2	-278.600*	58.620	.001	-459.85	-97.35
	P3	-329.400*	58.620	.000	-510.65	-148.15
KontrolBM	KontrolNeg	152.800	58.620	.134	-28.45	334.05
	KontrolList	104.600	58.620	.494	-76.65	285.85
	P1	-99.800	58.620	.543	-281.05	81.45
	P2	-174.000	58.620	.065	-355.25	7.25
	P3	-224.800*	58.620	.009	-406.05	-43.55
P1	KontrolNeg	252.600*	58.620	.003	71.35	433.85
	KontrolList	204.400*	58.620	.021	23.15	385.65
	KontrolBM	99.800	58.620	.543	-81.45	281.05
	P2	-74.200	58.620	.800	-255.45	107.05
	P3	-125.000	58.620	.305	-306.25	56.25
P2	KontrolNeg	326.800*	58.620	.000	145.55	508.05
	KontrolList	278.600*	58.620	.001	97.35	459.85
	KontrolBM	174.000	58.620	.065	-7.25	355.25
	P1	74.200	58.620	.800	-107.05	255.45
	P3	-50.800	58.620	.951	-232.05	130.45
P3	KontrolNeg	377.600*	58.620	.000	196.35	558.85
	KontrolList	329.400*	58.620	.000	148.15	510.65
	KontrolBM	224.800*	58.620	.009	43.55	406.05
	P1	125.000	58.620	.305	-56.25	306.25
	P2	50.800	58.620	.951	-130.45	232.05

*. The mean difference is significant at the .05 level.

Homogeneous Subsets

hasilJumlah

Tukey HSD^a

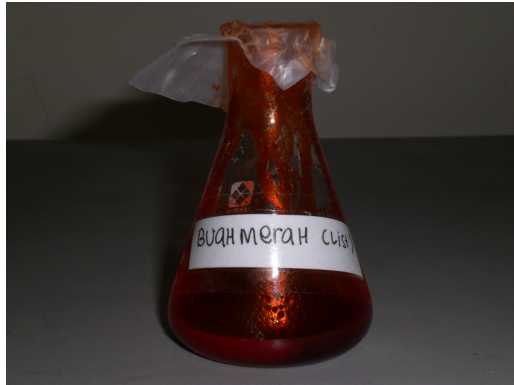
perlakuanJumlah	N	Subset for alpha = .05		
		1	2	3
KontrolNeg	5	142.20		
KontrolList	5	190.40		
KontrolBM	5	295.00	295.00	
P1	5		394.80	394.80
P2	5		469.00	469.00
P3	5			519.80
Sig.		.134	.065	.305

Means for groups in homogeneous subsets are displayed.

a. Uses Harmonic Mean Sample Size = 5.000.

Lampiran 4.

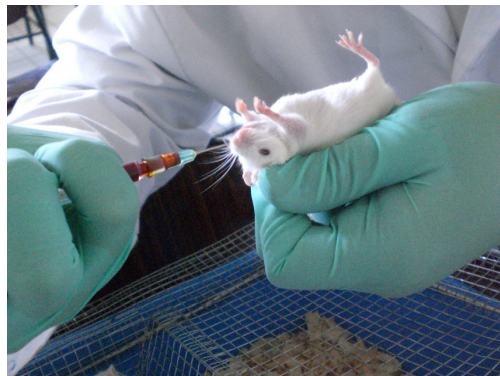
Dokumentasi Penelitian



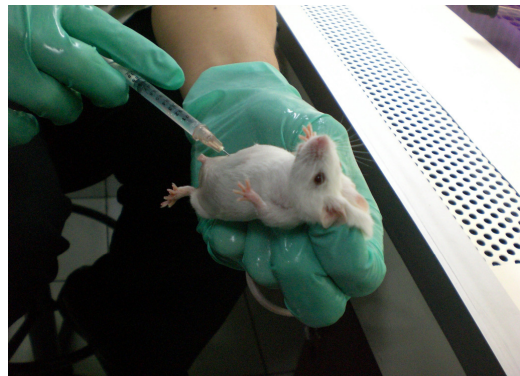
Ekstrak Buah Merah



Hewan Coba



Pemberian Ekstrak Buah Merah per oral



Penyuntikan *L.monocytogenes*
per intraperitoneal

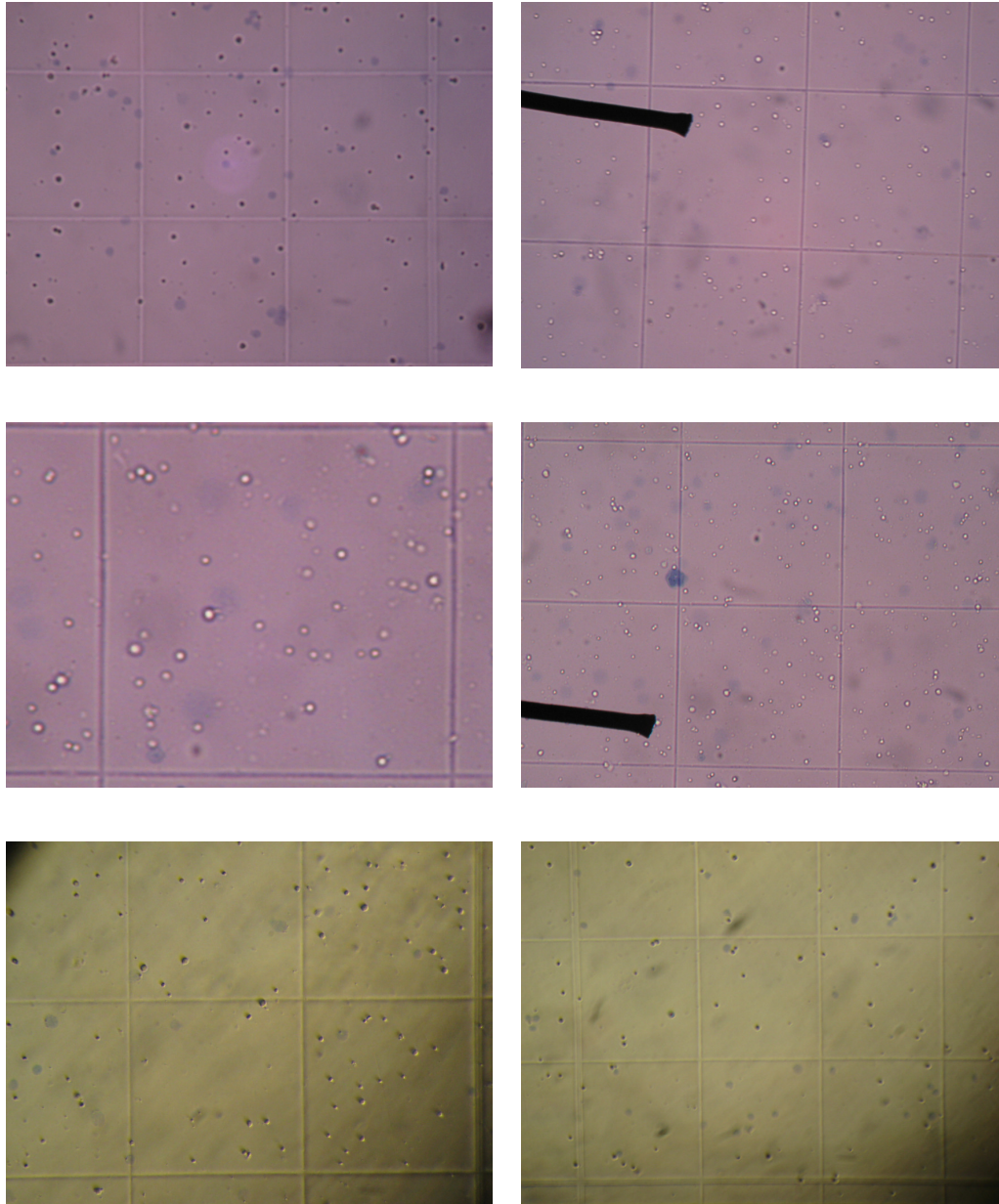


Limpa



Pengukuran Berat Limpa

Pembuatan *Single Cell Suspension*Kamar Hitung *Improved Neubauer*



Penghitungan Jumlah Limfosit dengan Hemositometer *Improved Neubauer*

RIWAYAT HIDUP

Nama : Shella Hudaya
NRP : 0510022
Tempat dan Tanggal Lahir : Bandung, 22 Februari 1988
Alamat Rumah : Jl. Arumbinang No.8, Kebumen
Riwayat Pendidikan : SD Santa Maria, Purwokerto, 1999
SMP Susteran, Purwokerto, 2002
SMA Kolese Loyola, Semarang, 2005

Karya Tulis yang pernah dibuat : Pengaruh Pemberian Aluminium sebagai
Faktor Risiko Penyakit Alzheimer terhadap
Jaringan Otak Mencit