

LAMPIRAN I

DATA HASIL STATISTIK SGOT

Descriptives

LOGASTBR								
	N	Mean	Std. Deviation	Std. Error	95% Confidence Interval for Mean		Minimum	Maximum
					Lower Bound	Upper Bound		
Cordyceps 1	5	1.4337	.17704	.07917	1.2139	1.6535	1.27	1.67
Cordyceps 2	5	1.5248	.41406	.18517	1.0107	2.0389	.87	1.96
Cordyceps 3	3	1.6891	.30363	.17530	.9348	2.4434	1.35	1.93
Paracetamol + 1	6	1.6299	.82519	.33688	.7639	2.4959	.52	2.87
Paracetamol + 2	6	1.5390	.72667	.29666	.7764	2.3016	.44	2.17
Paracetamol + 3	5	1.9691	.39067	.17471	1.4841	2.4542	1.55	2.43
CMC	5	1.5822	.51305	.22944	.9452	2.2193	.90	2.19
Paracetamol	5	2.7259	.63236	.28280	1.9408	3.5111	2.07	3.74
Total	40	1.7565	.65169	.10304	1.5481	1.9649	.44	3.74

Test of Homogeneity of Variances

LOGASTBR			
Levene Statistic	df1	df2	Sig.
1.584	7	32	.176

ANOVA

LOGASTBR					
	Sum of Squares	df	Mean Square	F	Sig.
Between Groups	6.260	7	.894	2.777	.022
Within Groups	10.303	32	.322		
Total	16.563	39			

Post Hoc Tests

Multiple Comparisons

Dependent Variable: LOGASTBR

LSD

(I) KELOMPOK	(J) KELOMPOK	Mean Difference (I-J)	Std. Error	Sig.	95% Confidence Interval	
					Lower Bound	Upper Bound
Cordyceps 1	Cordyceps 2	-.0911	.35888	.801	-.8221	.6399
	Cordyceps 3	-.2554	.41439	.542	-1.0995	.5887
	Paracetamol + 1	-.1962	.34360	.572	-.8961	.5037
	Paracetamol + 2	-.1053	.34360	.761	-.8052	.5946
	Paracetamol + 3	-.5354	.35888	.145	-1.2664	.1956
	CMC	-.1485	.35888	.682	-.8795	.5825
	Paracetamol	-1.2922*	.35888	.001	-2.0232	-.5612
Cordyceps 2	Cordyceps 1	.0911	.35888	.801	-.6399	.8221
	Cordyceps 3	-.1643	.41439	.694	-1.0084	.6798
	Paracetamol + 1	-.1051	.34360	.762	-.8050	.5948
	Paracetamol + 2	-.0142	.34360	.967	-.7141	.6857
	Paracetamol + 3	-.4444	.35888	.225	-1.1754	.2866
	CMC	-.0574	.35888	.874	-.7884	.6736
	Paracetamol	-1.2012*	.35888	.002	-1.9322	-.4702
Cordyceps 3	Cordyceps 1	.2554	.41439	.542	-.5887	1.0995
	Cordyceps 2	.1643	.41439	.694	-.6798	1.0084
	Paracetamol + 1	.0592	.40124	.884	-.7581	.8765
	Paracetamol + 2	.1501	.40124	.711	-.6672	.9674
	Paracetamol + 3	-.2800	.41439	.504	-1.1241	.5641
	CMC	.1069	.41439	.798	-.7372	.9510
	Paracetamol	-1.0368*	.41439	.018	-1.8809	-.1927
Paracetamol + 1	Cordyceps 1	.1962	.34360	.572	-.5037	.8961
	Cordyceps 2	.1051	.34360	.762	-.5948	.8050
	Cordyceps 3	-.0592	.40124	.884	-.8765	.7581
	Paracetamol + 2	.0909	.32761	.783	-.5764	.7582
	Paracetamol + 3	-.3392	.34360	.331	-1.0391	.3607
	CMC	.0477	.34360	.890	-.6522	.7476
	Paracetamol	-1.0960*	.34360	.003	-1.7959	-.3961
Paracetamol + 2	Cordyceps 1	.1053	.34360	.761	-.5946	.8052
	Cordyceps 2	.0142	.34360	.967	-.6857	.7141
	Cordyceps 3	-.1501	.40124	.711	-.9674	.6672
	Paracetamol + 1	-.0909	.32761	.783	-.7582	.5764
	Paracetamol + 3	-.4301	.34360	.220	-1.1300	.2698
	CMC	-.0432	.34360	.901	-.7431	.6567
	Paracetamol	-1.1869*	.34360	.002	-1.8868	-.4870
Paracetamol + 3	Cordyceps 1	.5354	.35888	.145	-.1956	1.2664
	Cordyceps 2	.4444	.35888	.225	-.2866	1.1754
	Cordyceps 3	.2800	.41439	.504	-.5641	1.1241
	Paracetamol + 1	.3392	.34360	.331	-.3607	1.0391
	Paracetamol + 2	.4301	.34360	.220	-.2698	1.1300
	CMC	.3869	.35888	.289	-.3441	1.1179
	Paracetamol	-.7568*	.35888	.043	-1.4878	-.0258
CMC	Cordyceps 1	.1485	.35888	.682	-.5825	.8795
	Cordyceps 2	.0574	.35888	.874	-.6736	.7884
	Cordyceps 3	-.1069	.41439	.798	-.9510	.7372
	Paracetamol + 1	-.0477	.34360	.890	-.7476	.6522
	Paracetamol + 2	.0432	.34360	.901	-.6567	.7431
	Paracetamol + 3	-.3869	.35888	.289	-1.1179	.3441
	Paracetamol	-1.1437*	.35888	.003	-1.8747	-.4127
Paracetamol	Cordyceps 1	1.2922*	.35888	.001	.5612	2.0232
	Cordyceps 2	1.2012*	.35888	.002	.4702	1.9322
	Cordyceps 3	1.0368*	.41439	.018	.1927	1.8809
	Paracetamol + 1	1.0960*	.34360	.003	.3961	1.7959
	Paracetamol + 2	1.1869*	.34360	.002	.4870	1.8868
	Paracetamol + 3	.7568*	.35888	.043	.0258	1.4878
	CMC	1.1437*	.35888	.003	.4127	1.8747

*. The mean difference is significant at the .05 level.

LAMPIRAN II

DATA HASIL STATISTIK SGPT

Descriptives

LOGALTBR								
	N	Mean	Std. Deviation	Std. Error	95% Confidence Interval for Mean		Minimum	Maximum
					Lower Bound	Upper Bound		
Cordyceps 1	4	1.0378	.37263	.18632	.4449	1.6308	.55	1.40
Cordyceps 2	3	1.2537	.33955	.19604	.4102	2.0972	1.01	1.64
Cordyceps 3	3	1.5983	.23187	.13387	1.0223	2.1743	1.34	1.78
Paracetamol + 1	6	2.1698	.50458	.20599	1.6402	2.6993	1.73	3.14
Paracetamol + 2	6	1.6325	.82028	.33488	.7717	2.4933	.00	2.23
Paracetamol + 3	5	1.7902	.72351	.32356	.8918	2.6885	.70	2.57
CMC	5	1.4963	.38334	.17143	1.0203	1.9723	1.05	2.07
Paracetamol	5	2.4113	.75910	.33948	1.4688	3.3538	1.46	3.48
Total	37	1.7300	.68429	.11250	1.5018	1.9581	.00	3.48

Test of Homogeneity of Variances

LOGALTBR			
Levene Statistic	df1	df2	Sig.
.720	7	29	.656

ANOVA

LOGALTBR					
	Sum of Squares	df	Mean Square	F	Sig.
Between Groups	6.478	7	.925	2.586	.034
Within Groups	10.379	29	.358		
Total	16.857	36			

Post Hoc Tests

Multiple Comparisons

Dependent Variable: LOGALTBR

LSD

(I) KELOMPOK	(J) KELOMPOK	Mean Difference (I-J)	Std. Error	Sig.	95% Confidence Interval	
					Lower Bound	Upper Bound
Cordyceps 1	Cordyceps 2	-.2158	.45691	.640	-1.1503	.7186
	Cordyceps 3	-.5605	.45691	.230	-1.4950	.3740
	Paracetamol + 1	-1.1319 *	.38616	.007	-1.9217	-.3422
	Paracetamol + 2	-.5947	.38616	.134	-1.3845	.1951
	Paracetamol + 3	-.7524	.40131	.071	-1.5731	.0684
	CMC	-.4585	.40131	.263	-1.2792	.3623
	Paracetamol	-1.3735 *	.40131	.002	-2.1942	-.5527
Cordyceps 2	Cordyceps 1	.2158	.45691	.640	-.7186	1.1503
	Cordyceps 3	-.3446	.48845	.486	-1.3436	.6544
	Paracetamol + 1	-.9161 *	.42301	.039	-1.7813	-.0509
	Paracetamol + 2	-.3789	.42301	.378	-1.2440	.4863
	Paracetamol + 3	-.5365	.43689	.229	-1.4300	.3570
	CMC	-.2426	.43689	.583	-1.1362	.6509
	Paracetamol	-1.1576 *	.43689	.013	-2.0512	-.2641
Cordyceps 3	Cordyceps 1	.5605	.45691	.230	-.3740	1.4950
	Cordyceps 2	.3446	.48845	.486	-.6544	1.3436
	Paracetamol + 1	-.5715	.42301	.187	-1.4366	.2937
	Paracetamol + 2	-.0342	.42301	.936	-.8994	.8309
	Paracetamol + 3	-.1919	.43689	.664	-1.0854	.7017
	CMC	.1020	.43689	.817	-.7915	.9955
	Paracetamol	-.8130	.43689	.073	-1.7065	.0805
Paracetamol + 1	Cordyceps 1	1.1319 *	.38616	.007	.3422	1.9217
	Cordyceps 2	.9161 *	.42301	.039	.0509	1.7813
	Cordyceps 3	.5715	.42301	.187	-.2937	1.4366
	Paracetamol + 2	.5372	.34539	.131	-.1692	1.2436
	Paracetamol + 3	.3796	.36225	.303	-.3613	1.1205
	CMC	.6734	.36225	.073	-.0674	1.4143
	Paracetamol	-.2415	.36225	.510	-.9824	.4993
Paracetamol + 2	Cordyceps 1	.5947	.38616	.134	-.1951	1.3845
	Cordyceps 2	.3789	.42301	.378	-.4863	1.2440
	Cordyceps 3	.0342	.42301	.936	-.8309	.8994
	Paracetamol + 1	-.5372	.34539	.131	-1.2436	.1692
	Paracetamol + 3	-.1577	.36225	.667	-.8985	.5832
	CMC	.1362	.36225	.710	-.6047	.8771
	Paracetamol	-.7788 *	.36225	.040	-1.5197	-.0379
Paracetamol + 3	Cordyceps 1	.7524	.40131	.071	-.0684	1.5731
	Cordyceps 2	.5365	.43689	.229	-.3570	1.4300
	Cordyceps 3	.1919	.43689	.664	-.7017	1.0854
	Paracetamol + 1	-.3796	.36225	.303	-1.1205	.3613
	Paracetamol + 2	-.1577	.36225	.667	-.8985	.5832
	CMC	.2939	.37835	.444	-.4800	1.0677
	Paracetamol	-.6211	.37835	.111	-1.3949	.1527
CMC	Cordyceps 1	.4585	.40131	.263	-.3623	1.2792
	Cordyceps 2	.2426	.43689	.583	-.6509	1.1362
	Cordyceps 3	-.1020	.43689	.817	-.9955	.7915
	Paracetamol + 1	-.6734	.36225	.073	-1.4143	.0674
	Paracetamol + 2	-.1362	.36225	.710	-.8771	.6047
	Paracetamol + 3	-.2939	.37835	.444	-1.0677	.4800
	Paracetamol	-.9150 *	.37835	.022	-1.6888	-.1412
Paracetamol	Cordyceps 1	1.3735 *	.40131	.002	.5527	2.1942
	Cordyceps 2	1.1576 *	.43689	.013	.2641	2.0512
	Cordyceps 3	.8130	.43689	.073	-.0805	1.7065
	Paracetamol + 1	.2415	.36225	.510	-.4993	.9824
	Paracetamol + 2	.7788 *	.36225	.040	.0379	1.5197
	Paracetamol + 3	.6211	.37835	.111	-.1527	1.3949
	CMC	.9150 *	.37835	.022	.1412	1.6888

*. The mean difference is significant at the .05 level.

LAMPIRAN III

GAMBAR DAN CARA KERJA

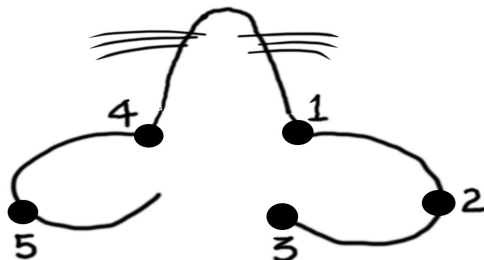
Gambar L.4.1 Mencit diadaptasikan selama 5 hari dalam suasana laboratorium



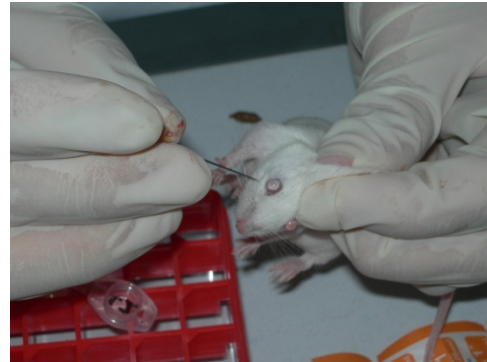
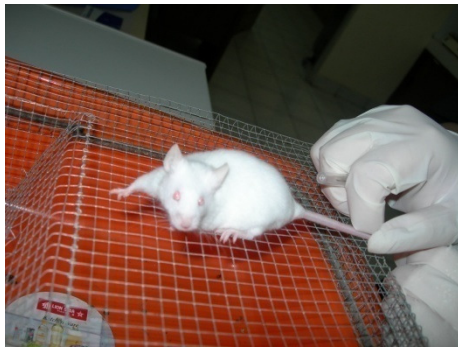
Gambar L.4.2 Sebelum perlakuan diberi perlakuan, masing-masing mencit ditimbang berat badannya, kemudian dibagi kelompok secara acak



G.ambar L. 4. 3 Diberi tanda dengan penindik



Gambar L. 4. 4 Pengambilan darah secara retro-orbital



Gambar L. 4. 5 Darah disentrifuga 2000 rpm selama 10 menit



Gambar L. 4. 6 Pengambilan serum



Gambar L. 4. 7 Serum dibekukan pada -20° Celcius



Gambar L. 4. 8 Pemberian perlakuan





Gambar L. 4. 9 Pemeriksaan laboratorium



RIWAYAT HIDUP

Nama : Emily Marcia Lavina
Nomor Pokok Mahasiswa : 0410170
Tempat dan Tanggal Lahir : Bandung, 16 Maret 1986
Alamat : Taman Kopo Indah A-32, Bandung
Riwayat Pendidikan : TK Paulus, Bandung, lulus 1992
SD Paulus I, Bandung, lulus 1998
SMPK BPK I, Bandung, lulus 2001
SMAK BPK I, Bandung, lulus 2004
Fakultas Kedokteran-UKM, Bandung, 2004-
sekarang