

Lampiran 1

Hasil Penelitian

Hasil Pengamatan Volume Urin Setelah Pemberian Jus Buah Stroberi (ml)

| Subjek Penelitian | Jam ke-1 | Jam ke- 2 | Jam ke- 3 | Jam ke- 4 | Jam ke-5 |
|-------------------|----------|-----------|-----------|-----------|----------|
| 2 | 126 | 111 | 80 | 82 | 80 |
| 3 | 84 | 62 | 52 | 135 | 63 |
| 4 | 94 | 91 | 52 | 41 | 37 |
| 5 | 20 | 18 | 15 | 20 | 12 |
| 6 | 26 | 37 | 48 | 237 | 82 |
| 7 | 85 | 37 | 28 | 35 | 40 |
| 8 | 26 | 22 | 20 | 50 | 18 |
| 9 | 36 | 40 | 36 | 32 | 30 |
| 10 | 32 | 27 | 25 | 21 | 22 |
| 11 | 44 | 30 | 25 | 32 | 31 |
| 12 | 68 | 38 | 70 | 99 | 66 |
| 13 | 89 | 68 | 98 | 86 | 105 |
| 14 | 26 | 26 | 108 | 151 | 178 |
| 15 | 25 | 23 | 30 | 28 | 25 |
| 16 | 55 | 44 | 98 | 115 | 112 |
| 17 | 80 | 146 | 367 | 152 | 275 |
| 18 | 62 | 38 | 100 | 82 | 62 |
| 19 | 120 | 87 | 73 | 60 | 62 |
| 20 | 96 | 78 | 69 | 61 | 86 |
| 20 | 143 | 259 | 317 | 216 | 244 |
| Rata-rata | 66.85 | 64.10 | 85.55 | 86.75 | 81.50 |

Hasil Pengamatan Volume Urin Setelah Pemberian Air Suling (ml)

| Subjek | Jam | Jam | Jam | Jam | Jam |
|------------|-------|-------|-------|-------|-------|
| Penelitian | ke-1 | ke- 2 | ke- 3 | ke- 4 | ke-5 |
| 1 | 40 | 67 | 32 | 32 | 65 |
| 2 | 25 | 20 | 25 | 44 | 81 |
| 3 | 38 | 25 | 20 | 22 | 22 |
| 4 | 20 | 17 | 13 | 13 | 13 |
| 5 | 47 | 27 | 41 | 35 | 29 |
| 6 | 50 | 43 | 38 | 31 | 24 |
| 7 | 16 | 16 | 16 | 16 | 22 |
| 8 | 23 | 35 | 22 | 23 | 23 |
| 9 | 20 | 16 | 16 | 17 | 17 |
| 10 | 41 | 33 | 67 | 92 | 108 |
| 11 | 89 | 45 | 138 | 128 | 51 |
| 12 | 44 | 35 | 29 | 23 | 26 |
| 13 | 25 | 21 | 28 | 23 | 29 |
| 14 | 23 | 22 | 23 | 23 | 24 |
| 15 | 35 | 30 | 31 | 63 | 40 |
| 16 | 67 | 83 | 232 | 118 | 109 |
| 17 | 48 | 43 | 44 | 29 | 32 |
| 18 | 55 | 43 | 40 | 36 | 36 |
| 19 | 50 | 36 | 31 | 26 | 20 |
| 20 | 118 | 98 | 40 | 157 | 74 |
| Rata-rata | 43.70 | 37.75 | 46.30 | 47.55 | 42.25 |

Hasil Pengamatan Volume Urin Setelah Pemberian Furosemid (ml)

| Subjek | Jam | Jam | Jam | Jam | Jam |
|------------|--------|--------|--------|--------|-------|
| Penelitian | ke-1 | ke- 2 | ke- 3 | ke- 4 | ke-5 |
| 1 | 573 | 435 | 162 | 123 | 38 |
| 2 | 487 | 572 | 293 | 176 | 60 |
| 3 | 275 | 718 | 462 | 190 | 42 |
| 4 | 170 | 550 | 340 | 167 | 105 |
| 5 | 70 | 710 | 690 | 217 | 55 |
| 6 | 155 | 608 | 558 | 165 | 61 |
| 7 | 290 | 495 | 480 | 228 | 148 |
| 8 | 34 | 540 | 646 | 270 | 120 |
| 9 | 290 | 336 | 249 | 128 | 67 |
| 10 | 455 | 445 | 375 | 78 | 43 |
| 11 | 655 | 417 | 225 | 72 | 38 |
| 12 | 580 | 738 | 593 | 185 | 62 |
| 13 | 626 | 556 | 230 | 99 | 21 |
| 14 | 118 | 332 | 295 | 370 | 60 |
| 15 | 270 | 695 | 295 | 150 | 65 |
| 16 | 56 | 611 | 644 | 746 | 226 |
| 17 | 494 | 585 | 270 | 141 | 122 |
| 18 | 460 | 380 | 420 | 350 | 330 |
| 19 | 450 | 380 | 440 | 280 | 110 |
| 20 | 731 | 512 | 221 | 131 | 66 |
| Rata-rata | 361.95 | 530.75 | 394.40 | 213.30 | 91.95 |

Lampiran 2

Hasil Penelitian Ditransformasi Dengan Ln

Hasil Pengamatan Volume Urin Setelah Pemberian Jus Buah Stroberi (Ditransformasi Dengan Ln)

| Subjek Penelitian | Jam ke-1 | Jam ke- 2 | Jam ke- 3 | Jam ke- 4 | Jam ke-5 |
|-------------------|----------|-----------|-----------|-----------|----------|
| 1 | 4.84 | 4.71 | 4.38 | 4.41 | 4.38 |
| 2 | 4.43 | 4.13 | 3.95 | 4.91 | 4.14 |
| 3 | 4.54 | 4.51 | 3.95 | 3.71 | 3.61 |
| 4 | 3.00 | 2.89 | 2.71 | 3.00 | 2.48 |
| 5 | 3.26 | 3.61 | 3.87 | 5.47 | 4.41 |
| 6 | 4.44 | 3.61 | 3.33 | 3.56 | 3.69 |
| 7 | 3.26 | 3.09 | 3.00 | 3.91 | 2.89 |
| 8 | 3.58 | 3.69 | 3.58 | 3.47 | 3.40 |
| 9 | 3.47 | 3.30 | 3.22 | 3.04 | 3.09 |
| 10 | 3.78 | 3.40 | 3.22 | 3.47 | 3.43 |
| 11 | 4.22 | 3.64 | 4.25 | 4.6 | 4.19 |
| 12 | 4.49 | 4.22 | 4.58 | 4.45 | 4.65 |
| 13 | 3.26 | 3.26 | 4.68 | 5.02 | 5.18 |
| 14 | 3.22 | 3.14 | 3.40 | 3.33 | 3.22 |
| 15 | 4.01 | 3.78 | 4.58 | 4.74 | 4.72 |
| 16 | 4.38 | 4.98 | 5.91 | 5.02 | 5.62 |
| 17 | 4.13 | 3.64 | 4.61 | 4.41 | 4.13 |
| 18 | 4.79 | 4.47 | 4.29 | 4.09 | 4.13 |
| 19 | 4.56 | 4.36 | 4.23 | 4.11 | 4.45 |
| 20 | 4.96 | 5.56 | 5.76 | 5.38 | 5.5 |
| Rata-rata | 4.03 | 3.90 | 4.08 | 4.21 | 4.07 |

Hasil Pengamatan Volume Urin Setelah Pemberian Air Suling
(Ditransformasi Dengan Ln)

| Subjek | Jam | Jam | Jam | Jam | Jam |
|------------|------|-------|-------|-------|------|
| Penelitian | ke-1 | ke- 2 | ke- 3 | ke- 4 | ke-5 |
| 1 | 3.69 | 4.200 | 3.47 | 3.47 | 4.17 |
| 2 | 3.22 | 3.00 | 3.22 | 3.78 | 4.39 |
| 3 | 3.64 | 3.22 | 3.00 | 3.09 | 3.09 |
| 4 | 3.00 | 2.83 | 2.56 | 2.56 | 2.56 |
| 5 | 3.85 | 3.3 | 3.71 | 3.56 | 3.37 |
| 6 | 3.91 | 3.76 | 3.64 | 3.43 | 3.18 |
| 7 | 2.77 | 2.77 | 2.77 | 2.77 | 3.09 |
| 8 | 3.14 | 3.56 | 3.09 | 3.14 | 3.14 |
| 9 | 3.00 | 2.77 | 2.77 | 2.83 | 2.83 |
| 10 | 3.71 | 3.50 | 4.20 | 4.52 | 4.68 |
| 11 | 4.49 | 3.81 | 4.93 | 4.85 | 3.93 |
| 12 | 3.78 | 3.56 | 3.37 | 3.14 | 3.26 |
| 13 | 3.22 | 3.04 | 3.33 | 3.14 | 3.37 |
| 14 | 3.14 | 3.09 | 3.14 | 3.14 | 3.18 |
| 15 | 3.56 | 3.4- | 3.43 | 4.14 | 3.69 |
| 16 | 4.2 | 4.42 | 5.45 | 4.77 | 4.69 |
| 17 | 3.87 | 3.76 | 3.78 | 3.37 | 3.47 |
| 18 | 4.01 | 3.76 | 3.69 | 3.58 | 3.58 |
| 19 | 3.91 | 3.58 | 3.43 | 3.26 | 3.00 |
| 20 | 4.77 | 4.58 | 3.69 | 5.06 | 4.3 |
| Rata-rata | 3.64 | 3.50 | 3.53 | 3.58 | 3.55 |

Hasil Pengamatan Volume Urin Setelah Pemberian Furosemid
(Ditransformasi Dengan Ln)

| Subjek Penelitian | Jam ke-1 | Jam ke- 2 | Jam ke- 3 | Jam ke- 4 | Jam ke-5 |
|-------------------|----------|-----------|-----------|-----------|----------|
| 1 | 6.35 | 6.08 | 5.09 | 4.81 | 3.64 |
| 2 | 6.19 | 6.35 | 5.68 | 5.17 | 4.09 |
| 3 | 5.62 | 6.58 | 6.14 | 5.25 | 3.74 |
| 4 | 5.14 | 6.31 | 5.83 | 5.12 | 4.65 |
| 5 | 4.25 | 6.57 | 6.54 | 5.38 | 4.01 |
| 6 | 5.04 | 6.41 | 6.32 | 5.11 | 4.11 |
| 7 | 5.67 | 6.20 | 6.17 | 5.43 | 5.00 |
| 8 | 3.53 | 6.29 | 6.47 | 5.60 | 4.79 |
| 9 | 5.67 | 5.82 | 5.52 | 4.85 | 4.20 |
| 10 | 6.12 | 6.10 | 5.93 | 4.36 | 3.76 |
| 11 | 6.48 | 6.03 | 5.42 | 4.28 | 3.64 |
| 12 | 6.36 | 6.60 | 6.39 | 5.22 | 4.13 |
| 13 | 6.44 | 6.32 | 5.44 | 4.60 | 3.04 |
| 14 | 4.77 | 5.81 | 5.69 | 5.91 | 4.09 |
| 15 | 5.60 | 6.54 | 5.69 | 5.01 | 4.17 |
| 16 | 4.03 | 6.42 | 6.47 | 6.61 | 5.42 |
| 17 | 6.20 | 6.37 | 5.60 | 4.95 | 4.80 |
| 18 | 6.13 | 5.94 | 6.04 | 5.86 | 5.80 |
| 19 | 6.11 | 5.94 | 6.09 | 5.63 | 4.70 |
| 20 | 6.59 | 6.24 | 5.4 | 4.88 | 4.19 |
| Rata-rata | 5.61 | 6.25 | 5.90 | 5.20 | 4.30 |

Lampiran 3

Uji Statistik Menggunakan Program SPSS 13.0

Estimated Marginal Means

1. perlakuan

Estimates

Measure: ml

| perlakuan | Mean | Std. Error | 95% Confidence Interval | |
|-----------|--------------------|------------|-------------------------|-------------|
| | | | Lower Bound | Upper Bound |
| 1 | 4.055 ^a | .136 | 3.769 | 4.341 |
| 2 | 3.560 ^a | .115 | 3.319 | 3.801 |
| 3 | 5.451 ^a | .048 | 5.350 | 5.551 |

a. Covariates appearing in the model are evaluated at the following values: Subyek = 10.50.

Pairwise Comparisons

Measure: ml

| (I) perlakuan | (J) perlakuan | Mean Difference (I-J) | Std. Error | Sig. ^a | 95% Confidence Interval for Difference ^a | |
|---------------|---------------|-----------------------|------------|-------------------|---|-------------|
| | | | | | Lower Bound | Upper Bound |
| 1 | 1 | | | | | |
| | 2 | .495* | .100 | .000 | .285 | .704 |
| | 3 | -1.396* | .136 | .000 | -1.682 | -1.110 |
| 2 | 1 | -.495* | .100 | .000 | -.704 | -.285 |
| | 2 | | | | | |
| | 3 | -1.891* | .127 | .000 | -2.158 | -1.623 |
| 3 | 1 | 1.396* | .136 | .000 | 1.110 | 1.682 |
| | 2 | 1.891* | .127 | .000 | 1.623 | 2.158 |
| | 3 | | | | | |

Based on estimated marginal means

*. The mean difference is significant at the .05 level.

a. Adjustment for multiple comparisons: Least Significant Difference (equivalent to no adjustments).

Multivariate Tests

| | Value | F | Hypothesis df | Error df | Sig. | Partial Eta Squared |
|--------------------|--------|----------------------|---------------|----------|------|---------------------|
| Pillai's trace | .925 | 104.512 ^a | 2.000 | 17.000 | .000 | .925 |
| Wilks' lambda | .075 | 104.512 ^a | 2.000 | 17.000 | .000 | .925 |
| Hotelling's trace | 12.295 | 104.512 ^a | 2.000 | 17.000 | .000 | .925 |
| Roy's largest root | 12.295 | 104.512 ^a | 2.000 | 17.000 | .000 | .925 |

Each F tests the multivariate effect of prilaku. These tests are based on the linearly independent pairwise comparisons among the estimated marginal means.

a. Exact statistic

2. waktu

Estimates

Measure: ml

| waktu | Mean | Std. Error | 95% Confidence Interval | |
|-------|--------------------|------------|-------------------------|-------------|
| | | | Lower Bound | Upper Bound |
| 1 | 4.430 ^a | .116 | 4.185 | 4.674 |
| 2 | 4.547 ^a | .088 | 4.362 | 4.732 |
| 3 | 4.501 ^a | .094 | 4.304 | 4.698 |
| 4 | 4.328 ^a | .095 | 4.129 | 4.528 |
| 5 | 3.971 ^a | .091 | 3.781 | 4.162 |

a. Covariates appearing in the model are evaluated at the following values: Subyek = 10.50.

Pairwise Comparisons

Measure: ml

| (I) waktu | (J) waktu | Mean Difference (I-J) | Std. Error | Sig. ^a | 95% Confidence Interval for Difference ^a | |
|-----------|-----------|--------------------------|------------|-------------------|--|-------------|
| | | | | | Lower Bound | Upper Bound |
| 1 | 1 | | | | | |
| | 2 | -.117 | .096 | .238 | -.319 | .084 |
| | 3 | -.072 | .129 | .584 | -.342 | .199 |
| | 4 | .101 | .130 | .445 | -.171 | .374 |
| | 5 | .458* | .119 | .001 | .209 | .708 |
| 2 | 1 | .117 | .096 | .238 | -.084 | .319 |
| | 2 | | | | | |
| | 3 | .045 | .065 | .495 | -.092 | .182 |
| | 4 | .218* | .071 | .007 | .068 | .368 |
| | 5 | .575* | .061 | .000 | .448 | .703 |
| 3 | 1 | .072 | .129 | .584 | -.199 | .342 |
| | 2 | -.045 | .065 | .495 | -.182 | .092 |
| | 3 | | | | | |
| | 4 | .173* | .053 | .004 | .062 | .284 |
| | 5 | .530* | .055 | .000 | .415 | .644 |
| 4 | 1 | -.101 | .130 | .445 | -.374 | .171 |
| | 2 | -.218* | .071 | .007 | -.368 | -.068 |
| | 3 | -.173* | .053 | .004 | -.284 | -.062 |
| | 4 | | | | | |
| | 5 | .357* | .046 | .000 | .261 | .453 |
| 5 | 1 | -.458* | .119 | .001 | -.708 | -.209 |
| | 2 | -.575* | .061 | .000 | -.703 | -.448 |
| | 3 | -.530* | .055 | .000 | -.644 | -.415 |
| | 4 | -.357* | .046 | .000 | -.453 | -.261 |
| | 5 | | | | | |

Based on estimated marginal means

*. The mean difference is significant at the .05 level.

a. Adjustment for multiple comparisons: Least Significant Difference (equivalent to no adjustments).

Multivariate Tests

| | Value | F | Hypothesis df | Error df | Sig. | Partial Eta Squared |
|--------------------|-------|---------------------|---------------|----------|------|---------------------|
| Pillai's trace | .895 | 31.801 ^a | 4.000 | 15.000 | .000 | .895 |
| Wilks' lambda | .105 | 31.801 ^a | 4.000 | 15.000 | .000 | .895 |
| Hotelling's trace | 8.480 | 31.801 ^a | 4.000 | 15.000 | .000 | .895 |
| Roy's largest root | 8.480 | 31.801 ^a | 4.000 | 15.000 | .000 | .895 |

Each F tests the multivariate effect of waktu. These tests are based on the linearly independent pairwise comparisons among the estimated marginal means.

a. Exact statistic

3. prlakuan * waktu

Measure: ml

| prlakuan | waktu | Mean | Std. Error | 95% Confidence Interval | |
|----------|-------|--------------------|------------|-------------------------|-------------|
| | | | | Lower Bound | Upper Bound |
| 1 | 1 | 4.031 ^a | .140 | 3.737 | 4.324 |
| | 2 | 3.899 ^a | .153 | 3.577 | 4.221 |
| | 3 | 4.075 ^a | .158 | 3.743 | 4.408 |
| | 4 | 4.204 ^a | .167 | 3.853 | 4.556 |
| | 5 | 4.066 ^a | .169 | 3.712 | 4.420 |
| 2 | 1 | 3.643 ^a | .105 | 3.422 | 3.865 |
| | 2 | 3.496 ^a | .108 | 3.269 | 3.723 |
| | 3 | 3.534 ^a | .148 | 3.223 | 3.845 |
| | 4 | 3.580 ^a | .153 | 3.258 | 3.901 |
| | 5 | 3.549 ^a | .140 | 3.254 | 3.844 |
| 3 | 1 | 5.614 ^a | .200 | 5.194 | 6.035 |
| | 2 | 6.245 ^a | .056 | 6.128 | 6.363 |
| | 3 | 5.894 ^a | .097 | 5.691 | 6.098 |
| | 4 | 5.201 ^a | .124 | 4.941 | 5.461 |
| | 5 | 4.299 ^a | .139 | 4.007 | 4.592 |

a. Covariates appearing in the model are evaluated at the following values: Subyek = 10.50.

Lampiran 4**CONTOH SURAT PERSETUJUAN NARACOBABA****SURAT PERSETUJUAN**

Yang bertanda tangan dibawah ini,

Nama lengkap :

NRP :

Tanggal lahir :

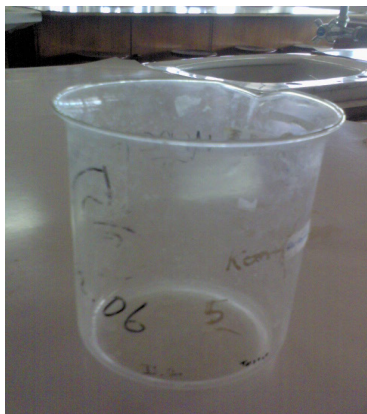
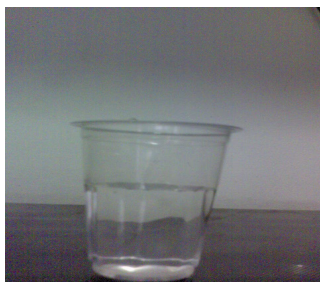
Alamat :

Menyatakan bersedia dan tidak berkeberatan menjadi naracoba dalam penelitian yang dilakukan oleh Asina Christine N, 0310147 dengan judul "Pengaruh Jus Buah Stroberi Terhadap Diuresis Pada Pria Dewasa Normal", yang bertempat di Universitas Kristen Maranatha.

Surat persetujuan ini saya buat dengan kesadaran saya sendiri tanpa tekanan atau paksaan dari pihak manapun.

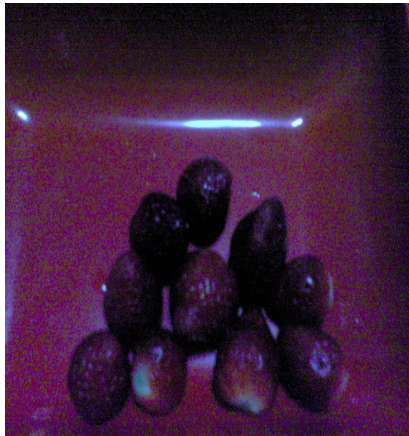
Bandung,

(.....)

Lampiran 5**Foto-foto Penelitian****Gambar 5.1 Penampung Urin****Gambar 5.3 Blender****Gambar 5.2 Tabung Pengukur
Volume Urin****Gambar 5.4 Timbangan****Gambar 5.5 100 ml Air suling**



Gambar 5.6 Gelas plastik



Gambar 5.7 100 gram buah Stroberi



Gambar 5.8 100 ml jus buah Stroberi

RIWAYAT HIDUP

Nama : Asina Christine N
NRP : 0310147
Tempat/Tanggal Lahir : Jakarta, 5 Agustus 1985
Alamat : Jl. Patrakomala No.45
Riwayat pendidikan :
1991, lulus TK Maetreyra, Karawang
1997, lulus SDN, Mangkubumen Lor XV, Surakarta
2000, lulus SLTPN 5, Bandung
2003, lulus SMUN 3, Bandung
2003 – sekarang, mahasiswa Fakultas Kedokteran Universitas Kristen Maranatha.