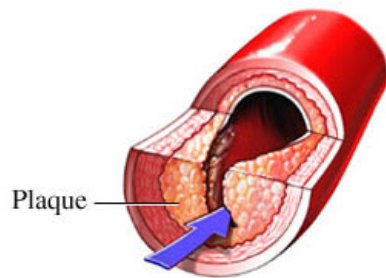
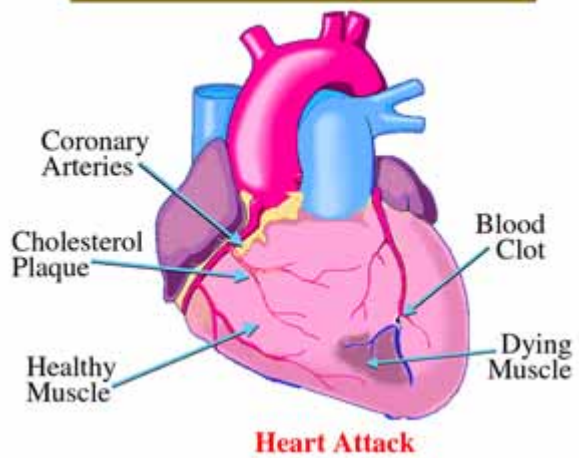
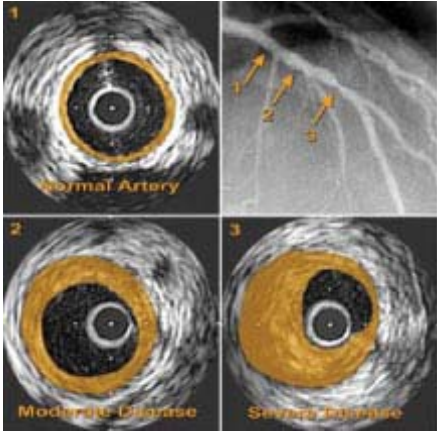


Ischemic Heart Disease





ISCHEMIC CARDIOPATHY

DEFINITION
 Ischemic cardiopathy is a disease of the heart caused by atherosclerosis of the coronary arteries. It is the leading cause of death in the United States.

SYMPTOMS
 Chest pain (angina), shortness of breath, fatigue, dizziness, fainting, and heart failure.

CAUSES
 High cholesterol, high blood pressure, smoking, diabetes, and obesity.

DIAGNOSIS
 Physical examination, electrocardiogram (ECG), chest X-ray, stress test, and coronary angiography.

TREATMENT
 Medications (aspirin, beta-blockers, statins), lifestyle changes (diet, exercise, smoking cessation), and surgical procedures (angioplasty, bypass surgery).

PREVENTION
 Regular exercise, healthy diet, and maintaining a healthy weight.

PROGNOSIS
 The prognosis depends on the extent of the disease and the patient's overall health.

COMPLICATIONS
 Myocardial infarction (heart attack), stroke, and heart failure.

PREVENTIVE MEASURES
 Regular exercise, healthy diet, and maintaining a healthy weight.

DIAGNOSIS
 Physical examination, electrocardiogram (ECG), chest X-ray, stress test, and coronary angiography.

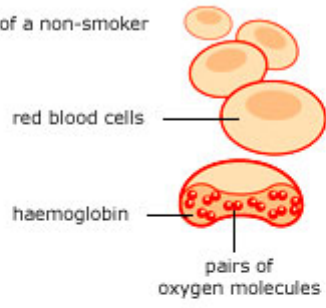
TREATMENT
 Medications (aspirin, beta-blockers, statins), lifestyle changes (diet, exercise, smoking cessation), and surgical procedures (angioplasty, bypass surgery).

PREVENTION
 Regular exercise, healthy diet, and maintaining a healthy weight.

PROGNOSIS
 The prognosis depends on the extent of the disease and the patient's overall health.

COMPLICATIONS
 Myocardial infarction (heart attack), stroke, and heart failure.

Blood cells of a non-smoker



Blood cells of a smoker

